

| F.A.U. RTE. | SECTION | COUNTY | TOTAL SHEETS | SHEET NO. |
|-------------|--------------|-------------|--------------|-----------|
| 5789 | (33&40)-1-FR | ROCK ISLAND | 30 | 1 |

STATE OF ILLINOIS
DEPARTMENT OF TRANSPORTATION
DIVISION OF HIGHWAYS

**PROPOSED
HIGHWAY PLANS**

FAU ROUTE 5789 (27TH ST)
SECTION (33&40)-1-FR
ROCK ISLAND COUNTY
C-92-051-07

D-92-043-06

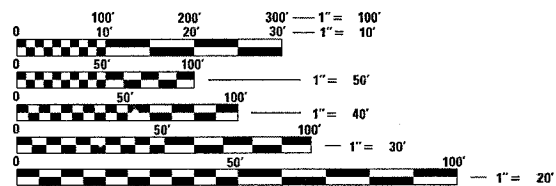
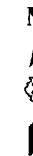
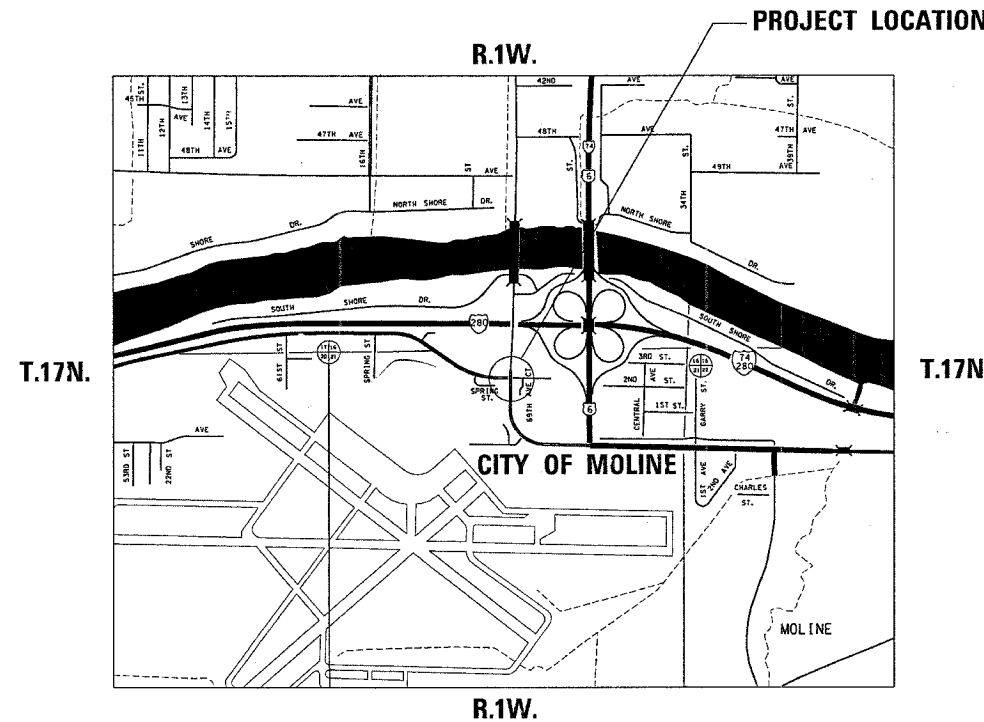


LOCATION OF SECTION INDICATED THUS: - [black box] -

FOR INDEX OF SHEETS, SEE SHEET NO. 2
FOR STATE STANDARDS, SEE SHEET NO. 2

PROJECT ENGINEER: BOB WAGNER

COAL VALLEY TOWNSHIP SECTION 21



FULL SIZE PLANS HAVE BEEN PREPARED USING STANDARD ENGINEERING SCALES. REDUCED SIZED PLANS WILL NOT CONFORM TO STANDARD SCALES. IN MAKING MEASUREMENTS ON REDUCED PLANS, THE ABOVE SCALES MAY BE USED.

J.U.L.I.E.
JOINT UTILITY LOCATION INFORMATION FOR EXCAVATION
1-800-892-0123

STATE OF ILLINOIS
DEPARTMENT OF TRANSPORTATION
DIVISION OF HIGHWAYS

SUBMITTED MARCH 21 2007

George F. Ryan
DEPUTY DIRECTOR OF HIGHWAYS, REGION ENGINEER

May 11, 2007
Eric E. Howard
ENGINEER OF DESIGN AND ENVIRONMENT

May 11, 2007
Milton R. See P.E./RD
DIRECTOR OF HIGHWAYS, CHIEF ENGINEER

**PRINTED BY THE AUTHORITY
OF THE STATE OF ILLINOIS**

SQUAD LEADER: LUCAS MEGLI (815) 284-5362

CONTRACT NO. 64C16

| | | | | |
|---------------------|--------------|------------------|--------------|-----------|
| F.A.W. RTE. | SECTION | COUNTY | TOTAL SHEETS | SHEET NO. |
| 5789 | 338&401-1-FR | ROCK ISLAND | 30 | 3 |
| STA. | | TO STA. | | |
| FED. ROAD DIST. NO. | ILLINOIS | FED. AID PROJECT | | |

SUMMARY OF QUANTITIES

| CODE NUMBER | ITEM | UNIT | URBAN | | 1000-1A | Y031-1F |
|-------------|--|--------|----------------|------------|------------|------------|
| | | | TOTAL QUANTITY | 100% STATE | 100% STATE | 100% STATE |
| 20200100 | EARTH EXCAVATION | CU YD | 472 | 472 | | |
| 21101625 | TOPSOIL FURNISH AND PLACE, 6" | SO YD | 972 | 972 | | |
| 25200100 | SODDING | SQ YD | 972 | 972 | | |
| 25200200 | SUPPLEMENTAL WATERING | UNIT | 20 | 20 | | |
| 28000500 | INLET AND PIPE PROTECTION | EACH | 3 | 3 | | |
| 31100910 | SUB-BASE GRANULAR MATERIAL, TYPE A 12" | SO YD | 572 | 572 | | |
| 40600625 | LEVELING BINDER (MACHINE MEATHOD), N50 | TON | 11 | 11 | | |
| 40600982 | HOT-MIX ASPHALT SURFACE REMOVAL, BUTT JOINT | SO YD | 75 | 75 | | |
| 40600985 | PORTLAND CEMENT CONCRETE SURFACE REMOVAL - BUTT JOINT | SO YD | 46 | 46 | | |
| 40603310 | HOT-MIX ASPHALT SURFACE COURSE, MIX "C" N50 | TON | 50 | 50 | | |
| 42000201 | PORTLAND CEMENT CONCRETE PAVEMENT 7" (JOINTED) | SO YD | 497 | 497 | | |
| 44000100 | PAVEMENT REMOVAL | SO YD | 21 | 21 | | |
| 44004250 | PAVED SHOULDER REMOVAL | SO YD | 70 | 70 | | |
| 44200919 | CLASS B PATCHES, TYPE II, 7 INCH | SO YD | 28 | 28 | | |
| 44213200 | SAW CUTS | FOOT | 156 | 156 | | |
| 50105220 | PIPE CULVERT REMOVAL | FOOT | 58 | 58 | | |
| 54200220 | PIPE CULVERTS, CLASS D, TYPE 1 15" | FOOT | 9 | 9 | | |
| 54244405 | FLUSH INLET BOX FOR MEDIAN, STANDARD 542546 | EACH | 1 | 1 | | |
| 550A0050 | STORM SEWERS, CLASS A, TYPE 1 12" | FOOT | 12 | 12 | | |
| 550A0070 | STORM SEWERS, CLASS A, TYPE 1 15" | FOOT | 79 | 79 | | |
| 55034200 | STORM SEWERS, TYPE 1 REINFORCED CONCRETE ELLIPTICAL PIPE, SPAN 23, RISE 14 | FOOT | 21 | 21 | | |
| 55100700 | STORM SEWER REMOVAL 15" | FOOT | 16 | 16 | | |
| * 56109210 | WATER VALVES TO BE ADJUSTED | EACH | 1 | 1 | | |
| 60107600 | PIPE UNDERDRAINS 4" | FOOT | 50 | 50 | | |
| 60221100 | MANHOLES, TYPE A, 5'-DIAMETER, TYPE1 FRAME, CLOSED LID | EACH | 1 | 1 | | |
| 60255500 | MANHOLES TO BE ADJUSTED | EACH | 1 | 1 | | |
| 60242801 | INLETS, SPECIAL, NO. 5 | EACH | 2 | 2 | | |
| 60255800 | MANHOLES TO BE ADJUSTED WITH NEW TYPE 1 FRAME, CLOSED LID | EACH | 1 | 1 | | |
| 60500060 | REMOVING INLETS | EACH | 1 | 1 | | |
| 60605000 | COMBINATION CONCRETE CURB AND GUTTER, TYPE B-6.24 | FOOT | 266 | 266 | | |
| 67100100 | MOBILIZATION | L SUM | 1 | 1 | | |
| 70102620 | TRAFFIC CONTROL AND PROTECTION, STANDARD 701501 | L SUM | 1 | 1 | | |
| 70102625 | TRAFFIC CONTROL AND PROTECTION, STANDARD 701606 | L SUM | 1 | 1 | | |
| 70103815 | TRAFFIC CONTROL SURVEILLANCE | CAL DA | 10 | 10 | | |
| * 78001110 | PAINT PAVEMENT MARKING - LINE 4" | FOOT | 1685 | 1685 | | |
| * 78001150 | PAINT PAVEMENT MARKING - LINE 12" | FOOT | 204 | 204 | | |
| * 78001180 | PAINT PAVEMENT MARKING - LINE 24" | FOOT | 60 | 60 | | |
| * 80501000 | SERVICE INSTALLATION, (SPECIAL) | EACH | 1 | | | 1 |

* SPECIALTY ITEM

PLOT DATE = Wed Mar 21 08:51:02 2007
 FILE NAME = c:\projects\2007\385\061386.dgn
 USER = mgj/11
 USER NAME = mgj/11

| | | | | |
|---------------------|--------------|------------------|--------------|-----------|
| F.A.U. RTE. | SECTION | COUNTY | TOTAL SHEETS | SHEET NO. |
| 5789 | (33&40)-1-FR | ROCK ISLAND | 30 | 4 |
| STA. | | TO STA. | | |
| FED. ROAD DIST. NO. | ILLINOIS | FED. AID PROJECT | | |

SUMMARY OF QUANTITIES

| CODE NUMBER | ITEM | UNIT | URBAN | 1000-1A | Y031-1F |
|---------------------|--|-------|----------------|------------|------------|
| | | | TOTAL QUANTITY | 100% STATE | 100% STATE |
| 81400700 | HANDHOLE, PORTLAND CEMENT CONCRETE | EACH | 1 | | 1 |
| 81400720 | DOUBLE HANDHOLE, PORTLAND CEMENT CONCRETE | EACH | 1 | | 1 |
| * 81702110 | ELECTRIC CABLE IN CONDUIT, 600V (XLP TYPE USE) 1/C NO. 10 | FOOT | 1404 | | 1404 |
| * 82102250 | LUMINAIRE, SODIUM VAPOR, HORIZONTAL MOUNT, 250 WATT | EACH | 1 | | 1 |
| * 82500605 | LIGHTING CONTROLLER PHOTOCELL RELAY | EACH | 1 | | 1 |
| * 85000300 | MAINTENANCE OF EXISTING TRAFFIC SIGNAL INSTALLATION | L SUM | 1 | | 1 |
| * 85700205 | FULL-ACTUATED CONTROLLER AND TYPE IV CABINET, SPECIAL | EACH | 1 | | 1 |
| * 86400100 | TRANSCEIVER - FIBER OPTIC | EACH | 1 | | 1 |
| * 87100110 | FIBER OPTIC CABLE IN CONDUIT, NO. 62.5/125 6F | FOOT | 3180 | | 3180 |
| * 87301245 | ELECTRIC CABLE IN CONDUIT, SIGNAL, NO. 14 5C | FOOT | 1874 | | 1874 |
| * 87301255 | ELECTRIC CABLE IN CONDUIT, SIGNAL, NO. 14 7C | FOOT | 798 | | 798 |
| * 87301815 | ELECTRIC CABLE IN CONDUIT, SERVICE, NO. 6 3C | FOOT | 48 | | 48 |
| 87702920 | STEEL COMBINATION MAST ARM ASSEMBLY AND POLE 38 FT | EACH | 1 | | 1 |
| 87800200 | CONCRETE FOUNDATION, TYPE D | FOOT | 3 | | 3 |
| 87800415 | CONCRETE FOUNDATION, TYPE E, 36-INCH DIAMETER | FOOT | 11 | | 11 |
| 87900200 | DRILL EXISTING HANDHOLE | EACH | 3 | | 3 |
| * 88040090 | SIGNAL HEAD, POLYCARBONATE, LED, 1-FACE, 3-SECTION, MAST ARM MOUNTED | EACH | 1 | | 1 |
| 88200400 | TRAFFIC SIGNAL BACKPLATE, FORMED PLASTIC | EACH | 1 | | 1 |
| 89000200 | TEMPORARY TRAFFIC SIGNAL INSTALLATION | L SUM | 1 | | 1 |
| * 89500100 | RELOCATE EXISTING SIGNAL HEAD | EACH | 2 | | 2 |
| 89502375 | REMOVE EXISTING TRAFFIC SIGNAL EQUIPMENT | EACH | 1 | | 1 |
| 89502380 | REMOVE EXISTING HANDHOLE | EACH | 7 | | 7 |
| 89502385 | REMOVE EXISTING CONCRETE FOUNDATION | EACH | 1 | | 1 |
| X0324887 | CONDUIT INSTALLED, 2 1/2", NON-METALLIC | FOOT | 32 | | 32 |
| X0324888 | CONDUIT INSTALLED, 4", NON-METALLIC | FOOT | 394 | | 394 |
| X0325335 | CONDUIT INSTALLED, 1 1/2" DIA., NON-METALLIC | FOOT | 25 | | 25 |
| * XX003165 | VIDEO CAMERA DETECTOR SYSTEM | EACH | 1 | | 1 |
| Z0013798 | CONSTRUCTION LAYOUT | L SUM | 1 | 1 | |
| Z0017100 | DOWEL BARS | EACH | 68 | 68 | |
| Z0028415 | GEOTECHNICAL REINFORCEMENT | SQ YD | 28 | 28 | |
| Z0028700 | GRANULAR SUBGRADE REPLACEMENT | CU YD | 5 | 5 | |
| 44301500 | STRIP REFLECTIVE CRACK CONTROL TREATMENT SYSTEM D | FOOT | 202 | 202 | |

* SPECIALTY ITEM

PLT DATE = Wed Mar 21 08:51:02 2007
 PLOT SCALE = 50.0000 / IN.
 USER NAME = mgs11J

GENERAL NOTES

| ROUTE NO. | SEC. | COUNTY | TOTAL SHEETS | SHEET NO. |
|---------------------------------------|----------------|-------------|--------------|-----------|
| FAU 5789 (27 th Street) | (33 & 44)-1-FR | Rock Island | 30 | 5 |
| FED ROAD DIST. NO. | ILLINOIS | PROJECT | | |
| Contract #64C16 | | | | |

See cross sections for special ditches and backslopes.

Fertilizer shall be applied to all disturbed areas and incorporated into the seedbed prior to seeding or placement of sod at the rate specified in Sections 250 and 252 of the Standard Specifications. This work shall be included in the cost of EARTH EXCAVATION.

Previously pugmilled stockpiles of "Type A" older than 1 month will not be approved for use until a moisture check is run to verify moisture content. Material shipped to projects without being tested will not be accepted.

Except for the top 75 mm (3"), all aggregate bases and subbases 300 mm (12") in thickness shall be constructed of aggregate gradation CA-2. If the specified thickness exceeds 300 mm (12"), the bases or subbases shall be constructed of topsize 150 mm (6") breaker-run crushed stone with 70% to 90% by weight, passing the 4" sieve and 15% to 40% by weight, passing the 50 mm (2") size sieve, except for the top 75 mm (3"). The breaker-run crushed stone shall be reasonably uniformly graded from coarse to fine and be taken from a quarry ledge capable of producing Class "D" quality aggregate. The top 75 mm (3") shall be gradation CA-6 or CA-10 regardless of thickness. The water necessary to achieve compaction in all but the top 75 mm (3") layer may be added after the subbase or base course is placed on the grade.

All mandatory joint sealing for Class A, Class B, and Class B (Hinge Jointed) patches as shown on the plans will not be measured for payment. Optional sawing of the joint for the sealant reservoir will not be measured for payment.

For all concrete patching that will not be resurfaced, the concrete shall be struck off flush with the existing pavement surface at each end of the patch.

The Engineer reserves the right to check all patches for smoothness by the use of a 10' rolling straight edge set to a 3/16" tolerance in the wheel paths. Any patch areas higher than 3/16" must be ground smooth with an approved grinding device consisting of multiple saws. The use of bushhammer or other impact devices will not be permitted. Any patch with depressions greater than 3/16" shall be repaired in a manner approved by the Engineer.

The mandatory saw cuts for pavement patching are:

Class B Patch: Cut two transverse saw cuts outlining the patch and one transverse pressure relief saw cut. The longitudinal edges of the patch shall be cut full depth. When the patch is adjacent to a pcc shoulder, two saw cuts along the shoulder will be required.

The mandatory saw cuts will be paid for at the contract unit price per Meter (Foot) for SAW CUTS.

The following Mixture Requirements are applicable for this project:

| Mixture Uses(s): | Surface | Level Binder |
|--|----------------|--------------|
| PG: | PG 64-22 | PG 64-22 |
| Design Air Voids | 4.2 @ N50 | 4.2 @ N50 |
| Mixture Composition (Gradation Mixture) | IL 9.5 or 12.5 | IL 9.5 |
| Friction Aggregate | C | |
| 20 Year ESAL | .3 | .3 |

The Contractor shall place temporary hot-mix asphalt tapers along all sides of the utility structures protruding above the milled surface. The temporary tapers shall extend 2' outside of the castings, except for the approach side to traffic shall have a 4' taper length. Hot-mix asphalt meeting the approval of the Engineer shall be used, no cold millings will be allowed. The cost of the material, placement, maintenance, removal and disposal of said work will be included in the Pay Item for Hot-Mix Asphalt Surface Removal, Butt-Joint.

Reflective Crack Control shall be placed on the existing surface prior to any resurfacing, unless pavement is milled then it will be placed on the binder course.

Bituminous and Aggregate prime coat shall be placed in accordance with Section 406 of the Standard Specifications. The cost of the prime coats shall be included in the contract unit price per metric ton (ton) for LEVELING BINDER (MACHINE METHOD) of the type specified.

All frames and grates of drainage structures to be removed or filled shall be carefully salvaged and shall remain the property of the Contractor.

The cost of making sewer connections to existing drainage structures shall be included in the various contract unit prices for STORM SEWER.

Lateral distances from the centerline on all inlets are to the face of the inlet.

The new manhole lids on this project shall have the word "STORM", "SANITARY", or "WATER" on the lid. The word to be used is noted on the plans. It will be the Contractor's responsibility to determine the word to be used on other lids not noted on the plans. No additional compensation will be allowed for this work.

All proposed manholes on this project shall be cast in place or precast. This work will be paid for at the contract unit price Each for MANHOLE of the type and size specified.

The Contractor shall determine flowlines of existing sewer lines which are shown on the plans as estimated or unknown. This information is necessary before ordering inlets and manholes.

Pavement Marking shall be done according to Standard 780001, except as follows:

1. All words, such as ONLY, shall be 2.4 m (8 feet) high.
2. All non-freeway arrows shall be the large size.
3. The distance between yellow no-passing lines shall be 200 mm (8"), not 180 mm (7") as shown in the detail of Typical Lane and Edge Lines.

The Contractor shall place contraction joint in prolongation with joints in the existing pavement. The joint shall be a sawed contraction joint with dowel bar assembly as shown on Highway Standard 420001. The cost for this work shall be included in the contract unit price for the P.C.C. PAVEMENT 7" (JOINTED).

The Contractor shall be responsible for protecting utility property during construction operations as outlined in Article 107.31 of the Standard Specifications. A minimum of 48 hours advance notice is required for non-emergency work. The JULIE number is 800-892-0123. The following listed utilities located within the project limits or immediately adjacent to the project construction limits are members of JULIE:

AT&T
Mediacom

MidAmerican Energy Co.
City of Moline

The applicable portions of Article 105.07 of the Standard Specification shall apply except for the following: The Contractor shall be responsible to locate the vertical depths of the underground utilities which may interfere with construction operations. This work will not be measured or paid for separately, but shall be considered as included in the unit bid price for the item of construction involved.

Tie bars shall be installed to tie PCC appurtenance to adjacent existing concrete pavement.

GENERAL NOTES

| ROUTE NO. | SEC. | COUNTY | TOTAL SHEETS | SHEET NO. |
|---------------------------------------|----------------|-------------|--------------|-----------|
| FAU 5789 (27 th Street) | (33 & 44)-1-FR | Rock Island | 30 | 6 |
| FED ROAD DIST. NO. | ILLINOIS | PROJECT | | |
| Contract #64C16 | | | | |

Tie the following
to the existing
concrete pavement

Length, size, and
spacing of Tie Bars

| | | |
|-------------------------|-------------|--|
| Gutter or Curb & Gutter | Std. 606001 | 600 mm (24") long No. 20 (No. 6) @ 600 mm (24") centers |
| PCC Base Course | Std. 353001 | 600 mm (24") long No. 20 (No. 6) @ 750 mm (30") centers |
| PCC Pavement | Std. 420101 | 600 mm (24") long No. 20 (No. 6) @ 750 mm (30") centers |

Tie bars to be installed in accordance with the applicable portions of Article 420.05(b) of the Standard Specifications. See Highway Standard 420001 for detail on longitudinal construction joint grouted-in-place tie bar. The cost of the tie bars to be included in the cost of the PCC appurtenance adjacent to the existing pavement.

CADD data will be available to Contractors and Consultants working on this project. This information will be provided upon request as MicroStation CADD files and Geopak coordinate geometry files ONLY. If data is required in other formats it will be your responsibility to make these conversions. If any discrepancy or inconsistency arises between the electronic data and the information on the hard copy, the information on the hard copy should be used. Contact the District's Project Engineer to request these files.

A Cast Frame & Grate for Flush Inlet Box for Median, Standard 542546 shall be used. A Steel Frame & Grate will not be an option.

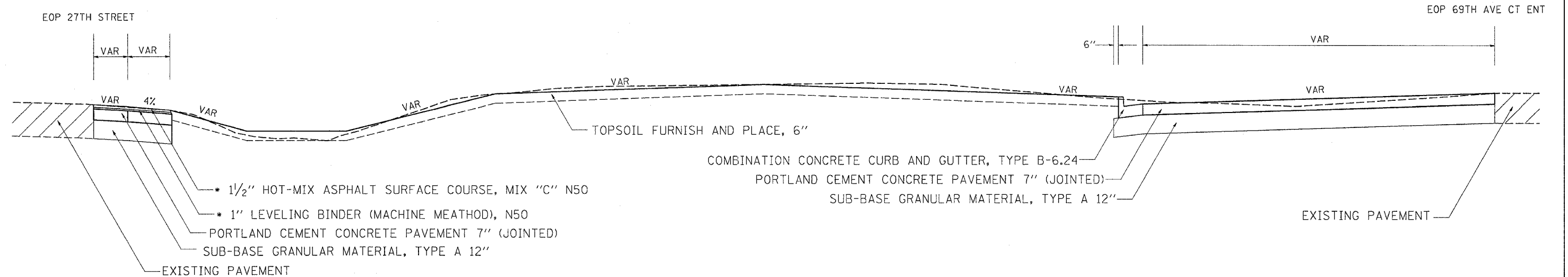
It shall be the Contractor's responsibility to contact the municipality to determine approved methods of utility structure adjustment. Utility structures may include, but are not limited to, manholes, water valves, handholes, etc. All materials and work necessary to complete adjustments per municipality requirements shall be considered included in the cost of the associated adjustment pay item.

Program #5
(Arch. Size)
Enlarge
200%
Enlarge 107%

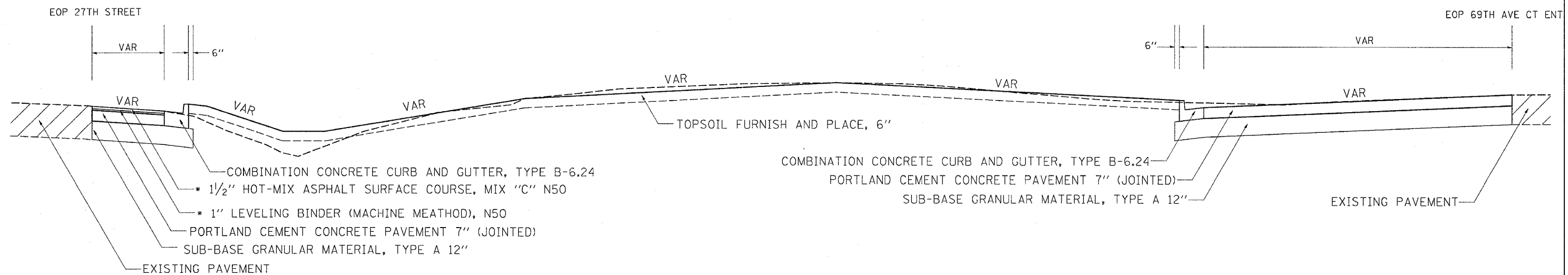
| F.A.U. RTE. | SECTION | COUNTY | TOTAL SHEETS | SHEET NO. |
|---------------------|--------------|------------------|--------------|-----------|
| 5789 | (33&40)-1-FR | ROCK ISLAND | 30 | 7 |
| STA. | | TO STA. | | |
| FED. ROAD DIST. NO. | ILLINOIS | FED. AID PROJECT | | |

TYPICAL SECTIONS

27TH ST STA. 20+22.50 - STA. 20+42.00



SECTION NORTH OF 27TH ST STA. 20+42.00



PLOT DATE * Wed Mar 21 09:22:21 2007
 FILE NAME * s:\p\proj\sect\20+22.50-42.00\084388.dgn
 PLOT SCALE * 50.0000 / IN.
 USER NAME * mgj11j

* 112 POUNDS / SQUARE YARD / INCH

| REVISIONS | |
|-----------|------|
| NAME | DATE |
| | |
| | |
| | |
| | |
| | |
| | |
| | |
| | |
| | |
| | |

ILLINOIS DEPARTMENT OF TRANSPORTATION

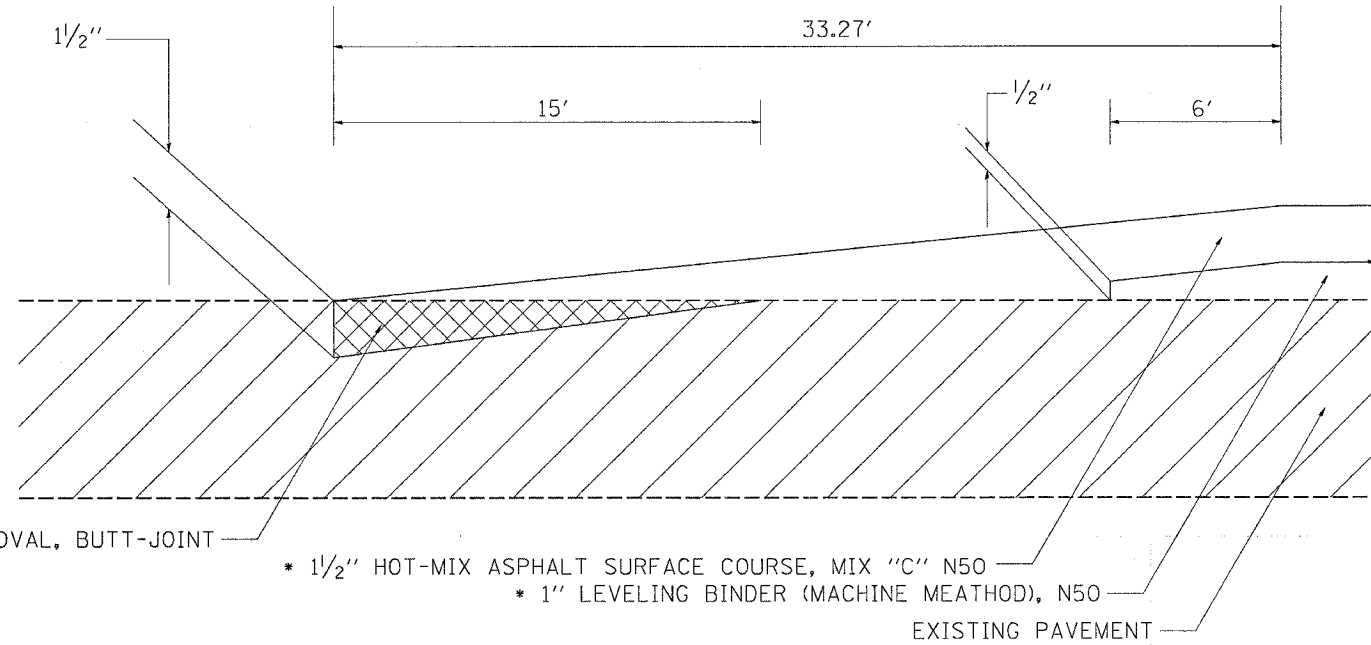
SCALE: VERT. / HORIZ. / DATE

DRAWN BY / CHECKED BY

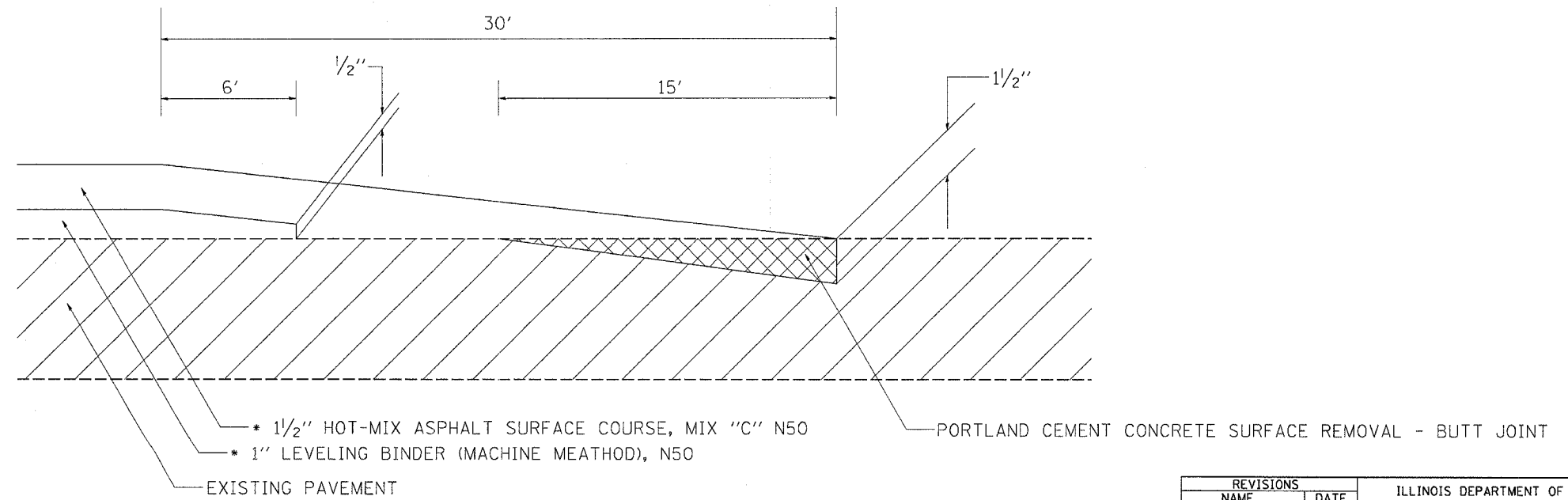
| | | | | |
|---------------------|--------------|-------------|------------------|-----------|
| F.A.U. RTE. | SECTION | COUNTY | TOTAL SHEETS | SHEET NO. |
| 5789 | (33&40)-I-FR | ROCK ISLAND | 30 | 8 |
| STA. | | TO STA. | | |
| FED. ROAD DIST. NO. | | ILLINOIS | FED. AID PROJECT | |

TYPICAL SECTIONS

69TH AVE CT
STA. 200+33.24 - STA. 200+66.51



69TH AVE CT
STA. 201+16.76 - STA. 201+46.76



* 112 POUNDS / SQUARE YARD / INCH

PLOT DATE = Wed Nov 21 09:25:21 2007
FILE NAME = I:\Projects\64C16\Drawings\64C16-1-1-FR.dgn
PLOT SCALE = 50.0000 / IN.
USER NAME = mgj11j

| REVISIONS | |
|-----------|------|
| NAME | DATE |
| | |
| | |
| | |
| | |
| | |
| | |
| | |
| | |
| | |
| | |

ILLINOIS DEPARTMENT OF TRANSPORTATION

SCALE: VERT.
DATE: HORIZ.

DRAWN BY
CHECKED BY

| F.A.U. RTE. | SECTION | COUNTY | TOTAL SHEETS | SHEET NO. |
|---------------------|--------------|-------------|------------------|-----------|
| 5789 | (33&40)-I-FR | ROCK ISLAND | 31 | 9 |
| STA. | | TO STA. | | |
| FED. ROAD DIST. NO. | | ILLINOIS | FED. AID PROJECT | |

SCHEDULE OF QUANTITIES

20200100 EARTH EXCAVATION

| CU YD | LOCATION | | | |
|--------|------------|-------|---|--------|
| | 27th ST RT | 19+58 | - | 20+ 95 |
| 472 | | | | |
| 472.00 | TOTAL | | | |

21101625 TOPSOIL FURNISH AND PLACE, 6"

| SQ YD | LOCATION | | | |
|--------|------------|-------|---|--------|
| | 27th ST RT | 19+58 | - | 20+ 95 |
| 972 | | | | |
| 972.00 | TOTAL | | | |

25200100 SODDING

| SQ YD | LOCATION | | | |
|--------|------------|-------|---|--------|
| | 27th ST RT | 19+58 | - | 20+ 95 |
| 972 | | | | |
| 972.00 | TOTAL | | | |

28000500 INLET AND PIPE PROTECTION

| EACH | LOCATION | | | |
|------|------------|-------|--|--------|
| | 27th ST RT | 20+52 | | 56' RT |
| 1 | | 20+63 | | 56' RT |
| 1 | | 20+63 | | 74' RT |
| 3.00 | TOTAL | | | |

31100910 SUB-BASE GRANULAR MATERIAL, TYPE A 12"

| SQ YD | LOCATION | | | |
|--------|------------|-------|---|--------|
| | 27th ST RT | 19+58 | - | 20+ 95 |
| 572 | | | | |
| 572.00 | TOTAL | | | |

40600625 LEVELING BINDER (MACHINE METHOD), N50

| TONS | LOCATION | | | | |
|-------|---------------------|--------|---|---------|-------|
| | 69th AVE CT LT & RT | 200+60 | - | 200+ 67 | TAPER |
| 9 | | 200+67 | - | 201+ 17 | |
| 1 | | 201+17 | - | 201+ 23 | TAPER |
| 11.00 | TOTAL | | | | |

40600982 HOT-MIX ASPHALT SURFACE REMOVAL, BUTT-JOINT

| SQ YD | LOCATION | | | |
|-------|---------------------|--------|---|---------|
| | 69th AVE CT LT & RT | 200+33 | - | 200+ 49 |
| 75 | | | | |
| 75.00 | TOTAL | | | |

40600985 PORTLAND CEMENT CONCRETE SURFACE REMOVAL - BUTT JOINT

| SQ YD | LOCATION | | | |
|-------|---------------------|--------|---|---------|
| | 69th AVE CT LT & RT | 201+31 | - | 201+ 47 |
| 46 | | | | |
| 46.00 | TOTAL | | | |

40603310 HOT-MIX ASPHALT SURFACE COURSE, MIX "C" N50

| TONS | LOCATION | | | |
|-------|---------------------|--------|---|---------|
| | 27th ST RT | 20+22 | - | 20+ 42 |
| 1 | | | | |
| | 69th AVE CT LT & RT | 200+33 | - | 201+ 47 |
| 49 | | | | |
| 50.00 | TOTAL | | | |

42000201 PORTLAND CEMENT CONCRETE PAVEMENT 7" (JOINTED)

| SQ YD | LOCATION | | | |
|--------|------------|-------|---|--------|
| | 27th ST RT | 19+58 | - | 20+ 95 |
| 497 | | | | |
| 497.00 | TOTAL | | | |

44000100 PAVEMENT REMOVAL

| SQ YD | LOCATION | | | |
|-------|----------------|--------|---|---------|
| | 69th AVE CT RT | 200+66 | - | 201+ 26 |
| 21 | | | | |
| 21.00 | TOTAL | | | |

44004250 PAVED SHOULDER REMOVAL

| SQ YD | LOCATION | | | |
|-------|------------|-------|---|--------|
| | 27th ST RT | 20+22 | - | 20+ 94 |
| 70 | | | | |
| 70.00 | TOTAL | | | |

44200919 CLASS B PATCHES, TYPE II, 7 INCH

| SQ YD | LOCATION | | | |
|-------|----------------|--------|--|--|
| | 69th AVE CT RT | 200+94 | | |
| 8 | | 200+94 | | |
| 10 | LT | 200+94 | | |
| 10 | LT | 201+31 | | |
| 28.00 | TOTAL | | | |

44213200 SAW CUTS

| FOOT | LOCATION | | | | |
|--------|----------------|--------|--|------------------|--|
| | 69th AVE CT RT | 200+94 | | 6' CLASS B PATCH | |
| 39 | | 200+94 | | 6' CLASS B PATCH | |
| 57 | LT | 200+94 | | 6' CLASS B PATCH | |
| 60 | RT | 201+31 | | 6' CLASS B PATCH | |
| 156.00 | TOTAL | | | | |

50105220 PIPE CULVERT REMOVAL

| FOOT | LOCATION | | | | |
|-------|----------------|--------|---|---------|------------------|
| | 69th AVE CT RT | 200+80 | - | 201+ 38 | 18" PIPE CULVERT |
| 58 | | | | | |
| 58.00 | TOTAL | | | | |

542D0220 PIPE CULVERTS, CLASS D, TYPE 1 15"

| FOOT | LOCATION | | | |
|------|------------|-------|---|--------|
| | 27th ST RT | 20+52 | - | 20+ 64 |
| 9 | | | | |
| 9.00 | TOTAL | | | |

PLOT DATE = Wed Mar 21 08:51:09 2007
 PLOT SCALE = 1/8"=1'-0"
 USER NAME = mgjllj

| | | | | |
|---------------------|--------------|------------------|--------------|-----------|
| F.A.U. RTE. | SECTION | COUNTY | TOTAL SHEETS | SHEET NO. |
| 5789 | (33&40)-I-FR | ROCK ISLAND | 31 | 10 |
| STA. | | TO STA. | | |
| FED. ROAD DIST. NO. | ILLINOIS | FED. AID PROJECT | | |

SCHEDULE OF QUANTITIES

54244405 FLUSH INLET BOX FOR MEDIAN, STANDARD 542546

| EACH | LOCATION | | |
|------|-------------------|-------|--|
| 1 | 27th ST 56' RT | 20+52 | |
| 1.00 | TOTAL | | |

550A0050 STORM SEWERS, CLASS A, TYPE 1 12"

| FOOT | LOCATION | | |
|-------|---------------|-------|---------|
| 12 | 27th ST RT | 20+62 | - 20+74 |
| 12.00 | TOTAL | | |

550A0070 STORM SEWERS, CLASS A, TYPE 1 15"

| FOOT | LOCATION | | |
|-------|-------------------|--------|----------|
| 76 | 69th AVE CT RT | 200+73 | - 201+50 |
| 3 | RT | 201+53 | - 201+56 |
| 79.00 | TOTAL | | |

55034200 STORM SEWERS, TYPE 1 REINFORCED CONCRETE ELLIPTICAL PIPE, SPAN 23, RISE 14

| FOOT | LOCATION | | |
|-------|---------------|-------|---------|
| 21 | 27th ST RT | 20+52 | - 20+63 |
| 21.00 | TOTAL | | |

55100700 STORM SEWER REMOVAL 15"

| FOOT | LOCATION | | |
|-------|-------------------|--------|---------|
| 16 | 69th AVE CT RT | 201+38 | - 20+53 |
| 16.00 | TOTAL | | |

56109210 WATER VALVES TO BE ADJUSTED

| EACH | LOCATION | | |
|------|---------------|-------|--------|
| 1 | 27th ST RT | 20+79 | 51' RT |
| 1.00 | TOTAL | | |

60107600 PIPE UNDERDRAINS 4"

| FOOT | LOCATION | | |
|-------|-------------------|--------|--|
| 20 | 69th AVE CT RT | 200+72 | |
| 30 | RT | 49+54 | |
| 50.00 | TOTAL | | |

60221100 MANHOLES, TYPE A, 5'-DIAMETER, TYPE 1 FRAME, CLOSED LID

| EACH | LOCATION | | |
|------|---------------|----------|--------|
| 1 | 27th ST RT | 20+62.58 | 74' RT |
| 1.00 | TOTAL | | |

60255500 MANHOLES TO BE ADJUSTED

| EACH | LOCATION | | |
|------|---------------|-------|--------|
| 1 | 27th ST RT | 20+87 | 59' RT |
| 1.00 | TOTAL | | |

60242801 INLETS, SPECIAL, NO. 5

| EACH | LOCATION | | |
|------|-------------------|--------|--------|
| 1 | 69TH AVE CT RT | 200+72 | 34' RT |
| 1 | LT | 49+55 | 39' LT |
| 2.00 | TOTAL | | |

60255800 MANHOLES TO BE ADJUSTED WITH NEW TYPE 1 FRAME, CLOSED LID

| EACH | LOCATION | | |
|------|---------------|------|--------|
| 1 | 27th ST RT | 21+6 | 59' RT |
| 1.00 | TOTAL | | |

60500060 REMOVING INLETS

| EACH | LOCATION | | |
|------|-------------------|--------|--------|
| 1 | 69TH AVE CT RT | 201+38 | 50' RT |
| 1.00 | TOTAL | | |

60605000 COMBINATION CONCRETE CURB AND GUTTER, TYPE B-6.24

| FOOT | LOCATION | | |
|--------|---------------|-------|---------|
| 266 | 27th ST RT | 20+42 | - 48+24 |
| 266.00 | TOTAL | | |

78001110 PAINT PAVEMENT MARKING - LINE 4" (DOUBLE APPLICATION)

| FOOT | LOCATION | | | |
|----------|----------------------|-------|---------|------------------|
| 585 | 27th ST RT | 20+22 | - 48+24 | WHITE EDGE |
| 60 | RT | 20+22 | - 21+24 | YELLOW SKIP DASH |
| 1040 | 69TH AVE CT LT&RT | 48+33 | - 49+76 | DOUBLE YELLOW |
| 1,685.00 | TOTAL | | | |

78001150 PAINT PAVEMENT MARKING-LINE 12" (DOUBLE APPLICATION)

| FOOT | LOCATION | | | |
|--------|----------------------|-------|---------|-----------------|
| 204 | 69TH AVE CT LT&RT | 48+33 | - 49+76 | MEDIAN DIAGONAL |
| 204.00 | TOTAL | | | |

78001180 PAINT PAVEMENT MARKING-LINE 24" (DOUBLE APPLICATION)

| FOOT | LOCATION | | | |
|-------|-------------------|-------|--|----------|
| 60 | 69TH AVE CT RT | 49+72 | | STOP BAR |
| 60.00 | TOTAL | | | |

PLOT DATE = Wed Mar 21 06:51:00 2007
 FILE NAME = c:\puro\puro\puro\234335\484386\vw.dgn
 PLOT SCALE = 50.0000 / IN.
 USER NAME = mgllj

SCHEDULE OF QUANTITIES

| F.A.U. R.T.E. | SECTION | COUNTY | TOTAL SHEETS | SHEET NO. |
|---------------------|--------------|---------------------------|--------------|-----------|
| 5789 | (33&40)-1-FR | ROCK ISLAND | 31 | 11 |
| STA. | | TO STA. | | |
| FED. ROAD DIST. NO. | | ILLINOIS FED. AID PROJECT | | |

Z0017100 DOWEL BARS

| EACH | LOCATION | | | |
|--------------|-------------|--------|--|------------------|
| | 69TH AVE CT | | | |
| 18 | RT | 200+94 | | 6' CLASS B PATCH |
| 26 | LT | 200+94 | | 6' CLASS B PATCH |
| 24 | RT | 201+31 | | 6' CLASS B PATCH |
| <u>68.00</u> | TOTAL | | | |

Z0028415 GEOTECHNICAL REINFORCEMENT

| SQ YD | LOCATION | | | |
|--------------|-------------|--------|---|--------|
| | 69th AVE CT | | | |
| 18 | LT&RT | 200+91 | - | 200+97 |
| 10 | LT | 201+28 | - | 201+34 |
| <u>28.00</u> | TOTAL | | | |

Z0028700 GRANULAR SUBGRADE REPLACEMENT

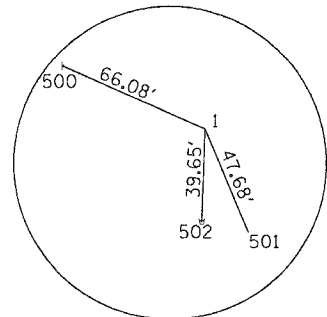
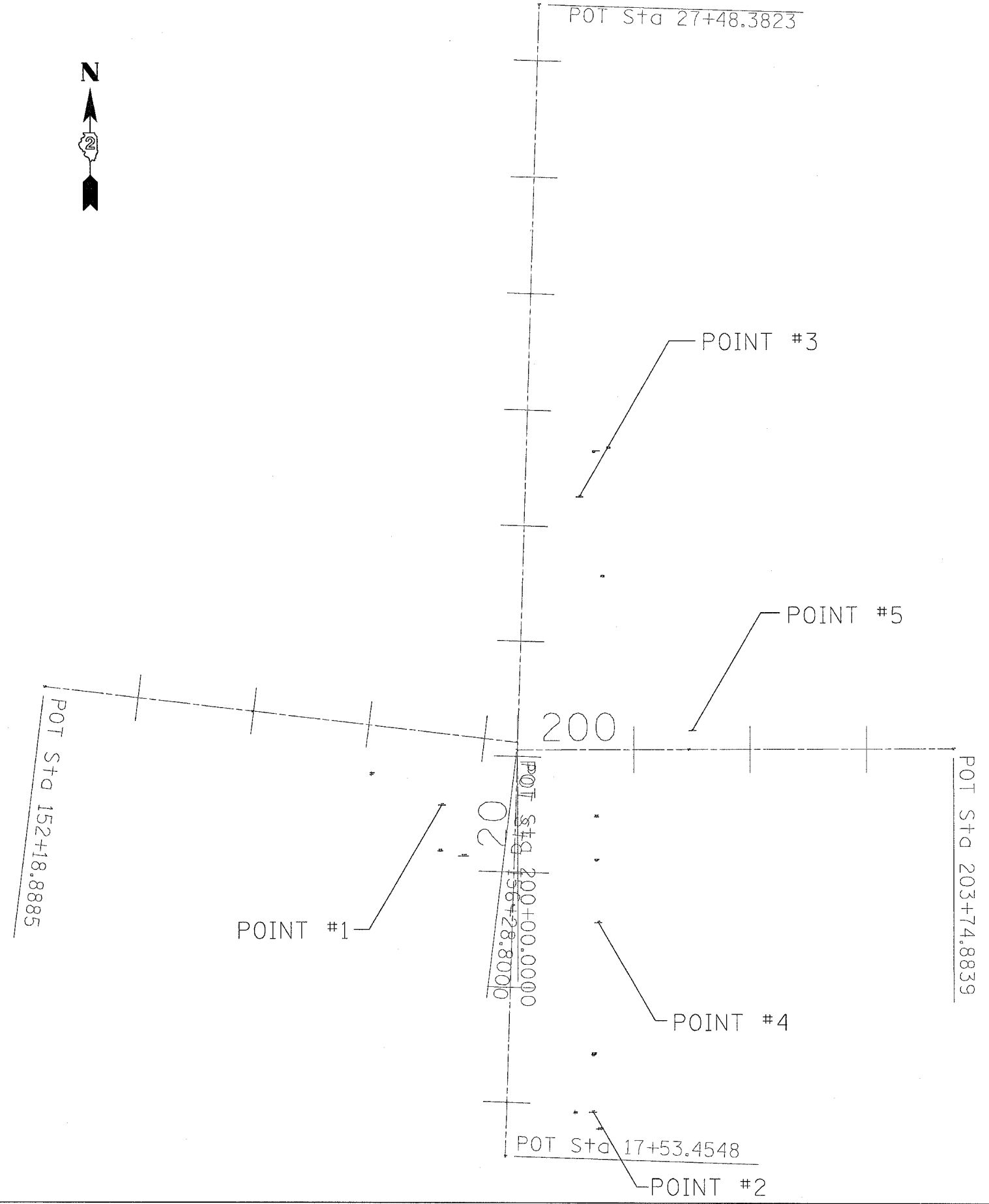
| CU YD | LOCATION | | | |
|-------------|-------------|--------|---|--------|
| | 69th AVE CT | | | |
| 3 | LT&RT | 200+91 | - | 200+97 |
| 2 | LT | 201+28 | - | 201+34 |
| <u>5.00</u> | TOTAL | | | |

*2001377 STRIP REFLECTIVE CRACK CONTROL TREATMENT SYSTEM D

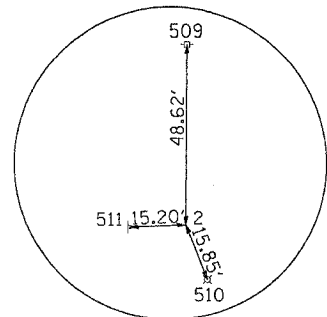
| FOOI | LOCATION | | | | |
|---------------|-------------|--------|---|--------|---|
| | 27th ST | | | | |
| 172 | RT | 20+22 | - | 201+47 | WIDENING CRACK FROM 27TH ST AROUND TO 69TH AVE CT |
| 30 | 69TH AVE CT | | | | |
| | RT | 201+00 | - | 201+26 | DIAGONAL CRACK |
| <u>202.00</u> | TOTAL | | | | |

PLOT DATE = Wed Nov 21 09:51:08 2007
 FILE NAME = I:\Projects\64C16\Drawings\64C16-SQ.dgn
 PLOT SCALE = 50.0000 / IN.
 USER NAME = mag11j

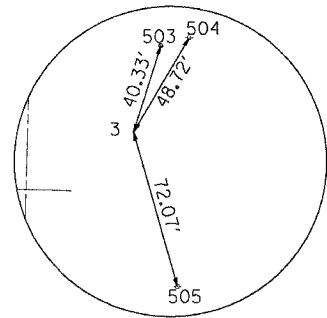
| | | | | |
|---------------------|--------------|---------------------------|--------------|-----------|
| F.A.U. RTE. | SECTION | COUNTY | TOTAL SHEETS | SHEET NO. |
| 5789 | (33&40)-1-FR | ROCK ISLAND | 30 | 12 |
| STA. | | TO STA. | | |
| FED. ROAD DIST. NO. | | ILLINOIS FED. AID PROJECT | | |



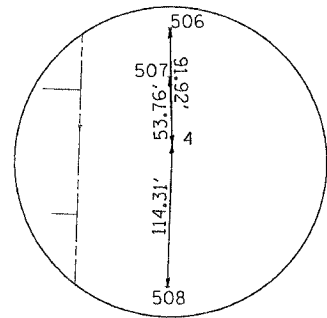
HORIZONTAL CONTROL POINT #1



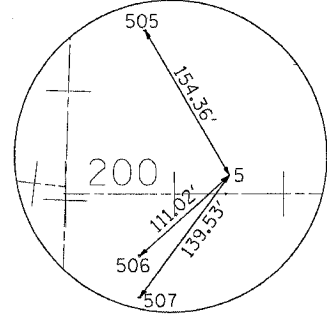
HORIZONTAL CONTROL POINT #2



HORIZONTAL CONTROL POINT #3



HORIZONTAL CONTROL POINT #4



HORIZONTAL CONTROL POINT #5

PLOT DATE = Wed Mar 21 09:58:25 2007
 FILE NAME = s:\projects\2004\306_084\306.dgn
 PLOT SCALE = 50.0000' / IN.
 USER NAME = megillj

| REVISIONS | |
|-----------|------|
| NAME | DATE |
| | |
| | |
| | |
| | |
| | |
| | |
| | |
| | |
| | |
| | |

ILLINOIS DEPARTMENT OF TRANSPORTATION

SCALE: VERT. _____
 HORIZ. _____

DATE _____

DRAWN BY _____
 CHECKED BY _____

| F.A.U. RTE. | SECTION | COUNTY | TOTAL SHEETS | SHEET NO. |
|---------------------|--------------|-------------|------------------|-----------|
| 5789 | (33&40)-1-FR | ROCK ISLAND | 30 | 13 |
| STA. | | TO STA. | | |
| FED. ROAD DIST. NO. | | ILLINOIS | FED. AID PROJECT | |

Chain 27THST contains:
10 12

Beginning chain 27THST description

Point 10 N 1,744,023.5260 E 2,205,356.0620 Sta 17+53.4548

Course from 10 to 12 1° 42' 52.5240" Dist 994.9275'

Point 12 N 1,745,018.0080 E 2,205,385.8310 Sta 27+48.3823

Ending chain 27THST description

Chain 69THAVCT contains:
210 15

Beginning chain 69THAVCT description

Point 210 N 1,744,375.4340 E 2,205,366.5961 Sta 200+00.0000

Course from 210 to 15 89° 52' 17.2841" Dist 374.8839'

Point 15 N 1,744,376.2750 E 2,205,741.4790 Sta 203+74.8839

Ending chain 69THAVCT description

Chain AIRPORTRD contains:
13 200

Beginning chain AIRPORTRD description

Point 13 N 1,744,431.1620 E 2,204,959.8480 Sta 152+18.8885

Course from 13 to 200 96° 54' 02.9854" Dist 409.9115'

Point 200 N 1,744,381.9106 E 2,205,366.7899 Sta 156+28.8000

Ending chain AIRPORTRD description

Chain P20190 contains:
70201 CUR 70220 CUR 70210 70200

Beginning chain P20190 description

Point 70201 N 1,744,213.9733 E 2,205,495.3648 Sta 48+12.5307

Course from 70201 to PC 70220 359° 52' 17.2849" Dist 21.0565'

Curve Data

Curve 70220
P.I. Station 48+63.9759 N 1,744,265.4183 E 2,205,495.2494
Delta = 62° 34' 48.7076" (RT)
Degree = 114° 35' 29.6125"
Tangent = 30.3886'
Length = 54.6115'
Radius = 50.0000'
External = 8.5104'
Long Chord = 51.9371'
Mid. Ord. = 7.2726'
P.C. Station 48+33.5872 N 1,744,235.0298 E 2,205,495.3175
P.T. Station 48+88.1988 N 1,744,279.4730 E 2,205,522.1926
C.C. N 1,744,235.1419 E 2,205,545.3174

Course from PT 70220 to PC 70210 62° 27' 05.9924" Dist 11.6509'

Curve Data

Curve 70210
P.I. Station 49+27.1994 N 1,744,297.5107 E 2,205,556.7714
Delta = 62° 34' 48.7084" (LT)
Degree = 127° 19' 26.2361"
Tangent = 27.3498'
Length = 49.1504'
Radius = 45.0000'
External = 7.6594'
Long Chord = 46.7434'
Mid. Ord. = 6.5453'
P.C. Station 48+99.8496 N 1,744,284.8615 E 2,205,532.5225
P.T. Station 49+49.0000 N 1,744,324.8604 E 2,205,556.7100
C.C. N 1,744,324.7594 E 2,205,511.7101

Course from PT 70210 to 70200 359° 52' 17.2841" Dist 51.0000'

Point 70200 N 1,744,375.8602 E 2,205,556.5956 Sta 50+00.0000

Ending chain P20190 description

HORIZONTAL CONTROL POINTS

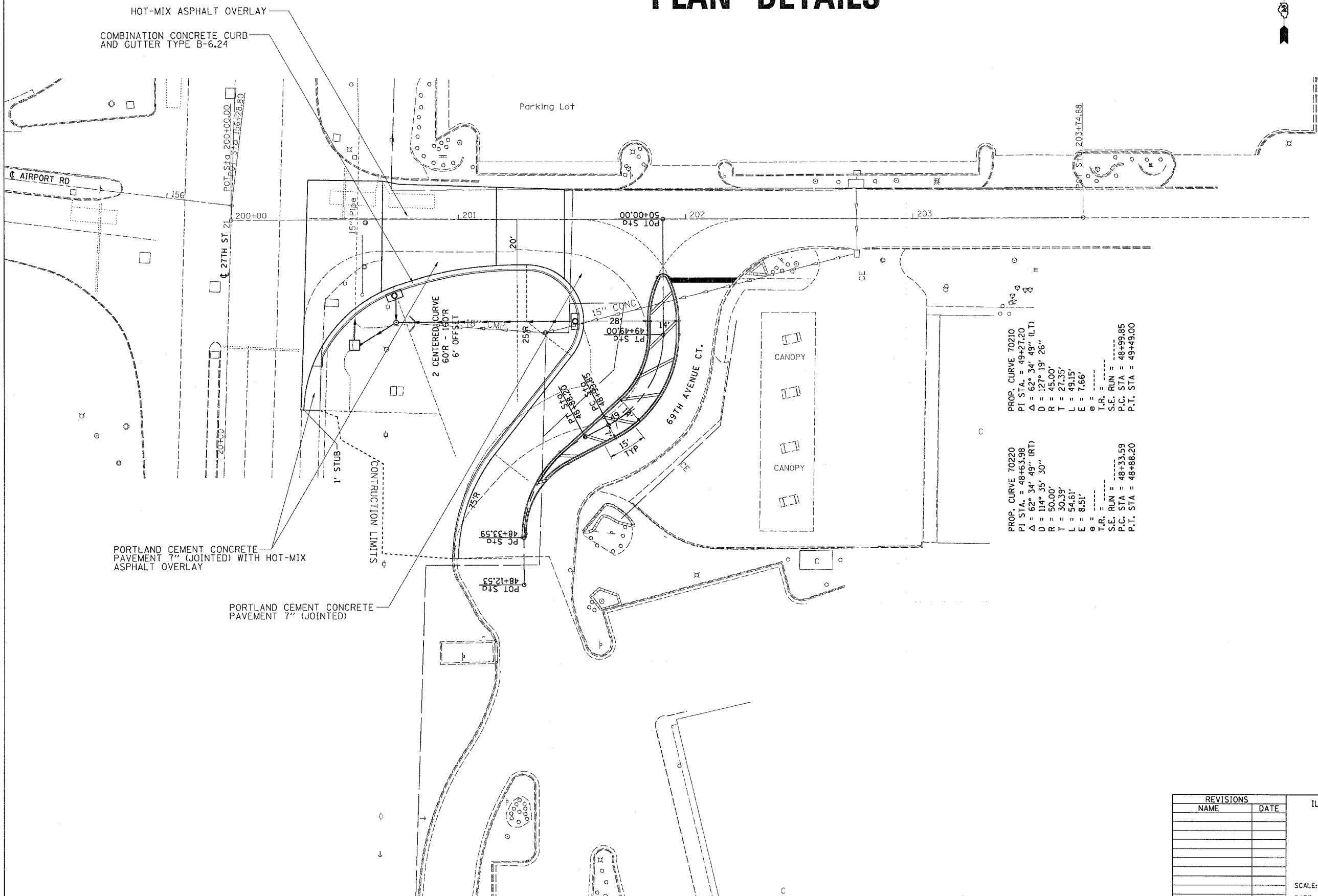
| POINT | NORTH | EAST | ELEVATION | CHAIN | STATION | OFFSET | DESCRIPTION |
|-------|--------------|--------------|-----------|--------|------------|--------------|-------------|
| 1 | 1744328.4042 | 2205301.6866 | 602.1453 | 27THST | 20+56.5695 | 63.4732' LT | PIN |
| 2 | 1744062.4461 | 2205431.7060 | 602.6880 | 27THST | 17+94.6208 | 74.4456' RT | PIN |
| 3 | 1744595.6707 | 2205420.2361 | 598.0880 | 27THST | 23+27.2635 | 47.0264' RT | PIN |
| 4 | 1744226.5258 | 2205436.1318 | 603.6293 | 27THST | 19+58.7595 | 73.96' RT | PIN |
| 5 | 1744392.7130 | 2205517.0590 | 603.1820 | 27THST | 21+27.2937 | 149.8786' RT | PIN |

REFERENCE TIES

| POINT | CHAIN | STATION | OFFSET | DESCRIPTION |
|-------|--------|------------|--------------|------------------------------------|
| 500 | 27THST | 20+81.3395 | 124.7344' LT | SIGN POLE, SHINER |
| 501 | 27THST | 20+13.1481 | 43.7798' LT | TRAFFIC SIGNAL CANTILEVER, PAINTED |
| 502 | 27THST | 20+16.9105 | 63.7093' LT | FIRE HYDRANT, TOP |
| 503 | 27THST | 23+66.0533 | 58.0596' RT | MANHOLE, CENTER |
| 504 | 27THST | 23+69.9318 | 70.5521' RT | POWER POLE WITH LIGHT, NAIL |
| 505 | 27THST | 22+58.4753 | 68.5261' RT | POWER POLE WITH LIGHT, NAIL |
| 506 | 27THST | 20+50.5711 | 69.6602' RT | FIRE HYDRANT, TOP |
| 507 | 27THST | 20+12.4177 | 70.6853' RT | POWER POLE, SHINER |
| 508 | 27THST | 18+44.4524 | 73.5902' RT | POWER POLE WITH LIGHT, SHINER |
| 509 | 27THST | 18+43.2296 | 73.3457' RT | POWER POLE, SHINER |
| 510 | 27THST | 17+80.0563 | 80.6982' RT | STREET LIGHT POLE, PAINTED |
| 511 | 27THST | 17+93.5575 | 59.2806' RT | SIGN POLE, NAIL |

| | | | | |
|---------------------|--------------|---------------------------|--------------|-----------|
| F.A.U. RTE. | SECTION | COUNTY | TOTAL SHEETS | SHEET NO. |
| 5789 | (33&40)-1-FR | ROCK ISLAND | 30 | 14 |
| STA. | | TO STA. | | |
| FED. ROAD DIST. NO. | | ILLINOIS FED. AID PROJECT | | |

PLAN DETAILS



PROP. CURVE 70210
 PI STA. = 49+27.20
 Δ = 62° 34' 49" (LT)
 D = 127° 19' 26"
 R = 45.00'
 T = 27.35'
 L = 49.15'
 E = 7.66'
 θ = -----
 T.R. = -----
 S.E. RUN = -----
 P.C. STA = 48+99.85
 P.T. STA = 49+49.00

PROP. CURVE 70220
 PI STA. = 48+63.98
 Δ = 62° 34' 49" (RT)
 D = 114° 35' 30"
 R = 50.00'
 T = 30.39'
 L = 54.61'
 E = 8.51'
 θ = -----
 T.R. = -----
 S.E. RUN = -----
 P.C. STA = 48+33.59
 P.T. STA = 48+88.20

| REVISIONS | |
|-----------|------|
| NAME | DATE |
| | |
| | |
| | |
| | |
| | |
| | |
| | |
| | |
| | |
| | |

ILLINOIS DEPARTMENT OF TRANSPORTATION

SCALE: VERT.
 HORIZ.
 DATE

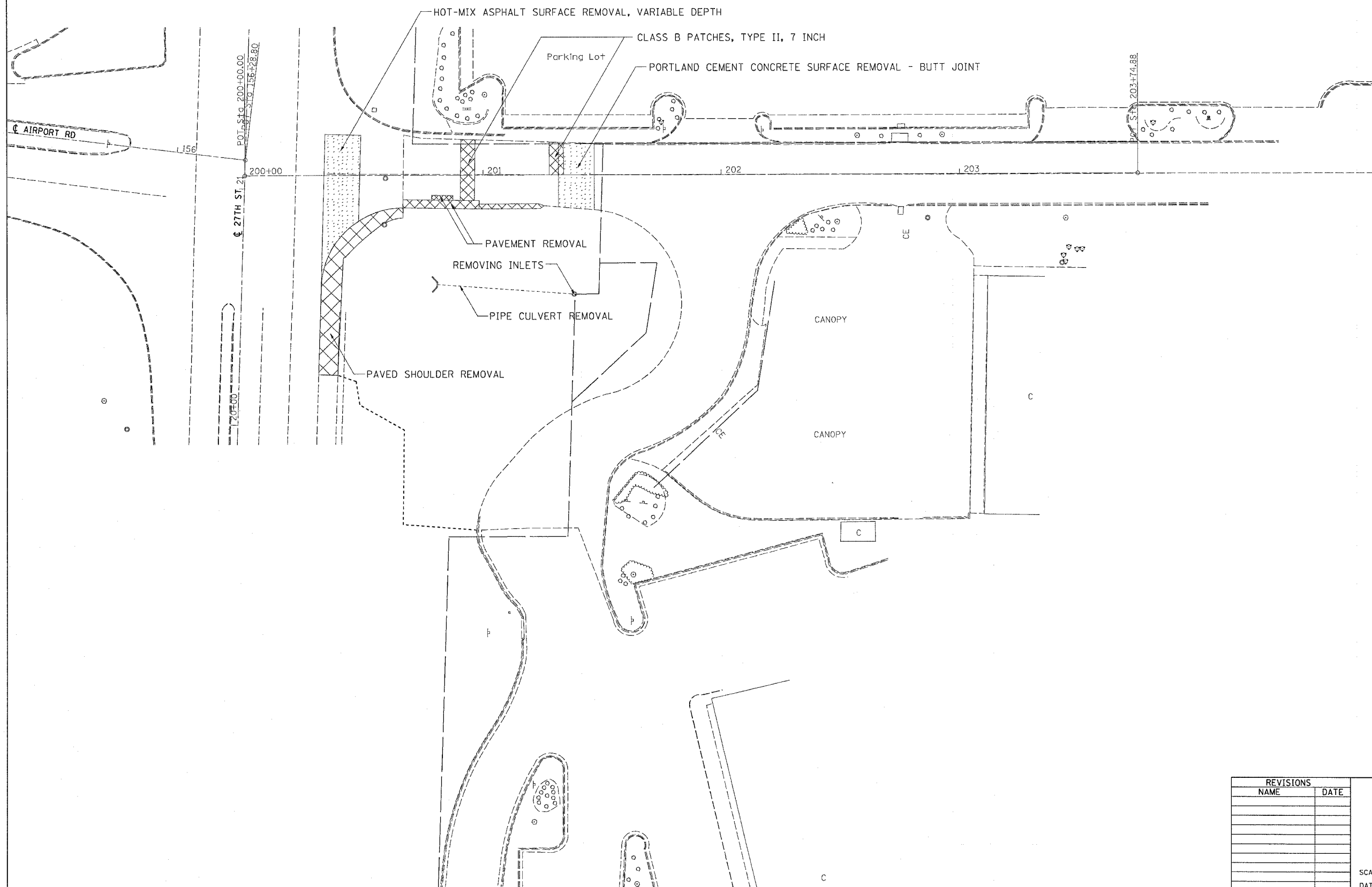
DRAWN BY
 CHECKED BY

PLT DATE = Wed Mar 21 09:28:08 2007
 USER = mep111
 USER NAME = mep111

| | | | | |
|---------------------|--------------|---------------------------|--------------|-----------|
| F.A.U. RTE. | SECTION | COUNTY | TOTAL SHEETS | SHEET NO. |
| 5789 | (33&40)-1-FR | ROCK ISLAND | 30 | 15 |
| STA. | | TO STA. | | |
| FED. ROAD DIST. NO. | | ILLINOIS FED. AID PROJECT | | |



REMOVAL DETAILS



PLOT DATE = Wed Mar 21 09:29:58 2007
 FILE NAME = I:\Projects\64C16\Drawings\64C16-15.dgn
 PLOT SCALE = 200/8000 = 1/40
 USER NAME = meg111

| REVISIONS | |
|-----------|------|
| NAME | DATE |
| | |
| | |
| | |
| | |
| | |
| | |
| | |
| | |
| | |
| | |

ILLINOIS DEPARTMENT OF TRANSPORTATION

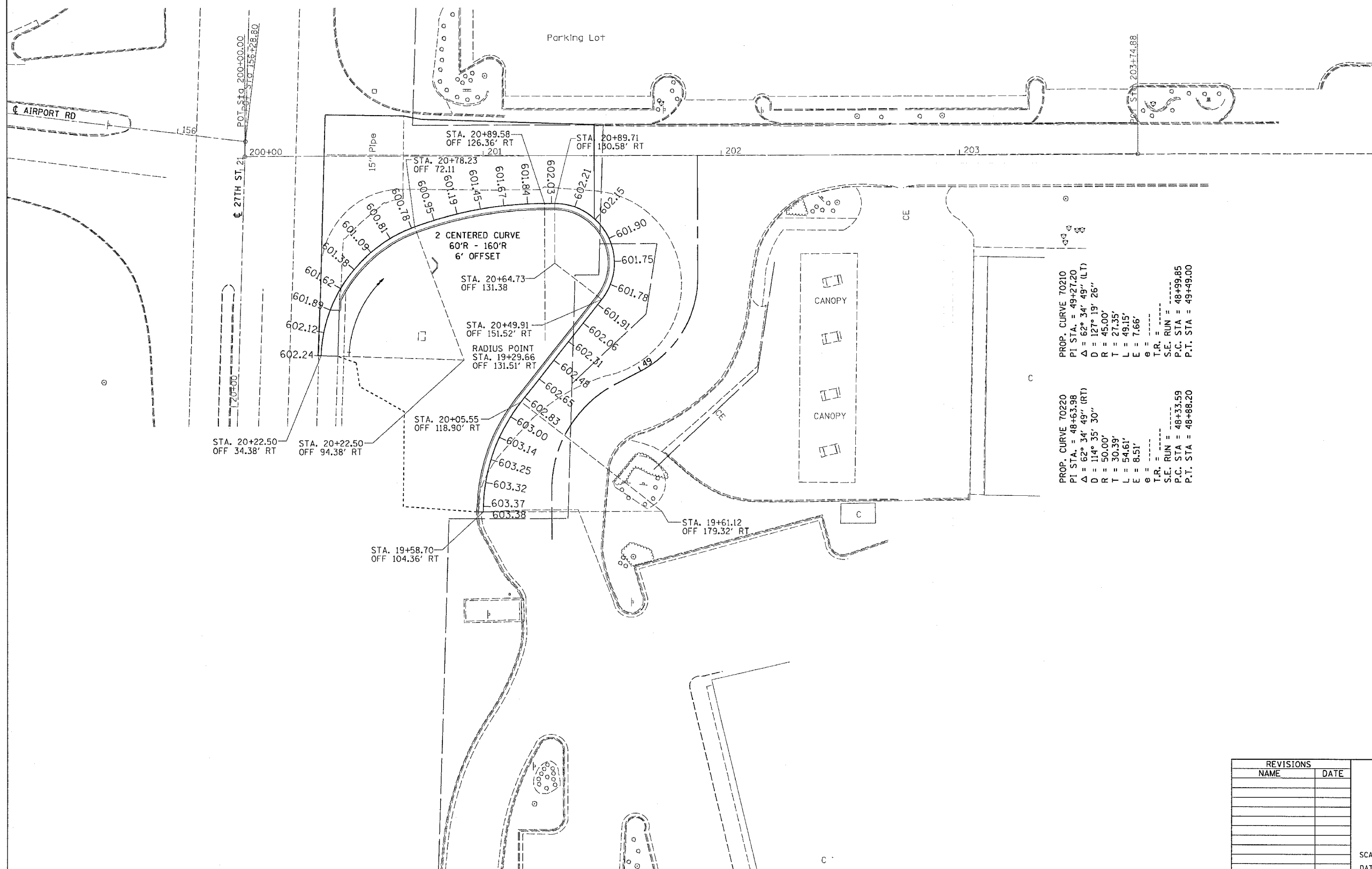
SCALE: VERT.
 HORIZ.
 DATE

DRAWN BY
 CHECKED BY

REMOVAL DETAILS

| F.A.U. RTE. | SECTION | COUNTY | TOTAL SHEETS | SHEET NO. |
|---------------------|--------------|------------------|--------------|-----------|
| 5789 | (33&40)-1-FR | ROCK ISLAND | 30 | 16 |
| STA. | | TO STA. | | |
| FED. ROAD DIST. NO. | ILLINOIS | FED. AID PROJECT | | |

ELEVATION DETAIL



PROP. CURVE 70210
 PI STA. = 49+27.20
 $\Delta = 62^\circ 34' 49''$ (LT)
 $D = 127^\circ 19' 26''$
 $R = 45.00'$
 $T = 27.35'$
 $L = 49.15'$
 $E = 7.66'$
 $\theta = \dots$
 $T.R. = \dots$
 $S.E. RUN = \dots$
 $P.C. STA = 48+99.85$
 $P.T. STA = 49+49.00$

PROP. CURVE 70220
 PI STA. = 48+63.98
 $\Delta = 62^\circ 34' 49''$ (RT)
 $D = 114^\circ 35' 30''$
 $R = 50.00'$
 $T = 30.39'$
 $L = 54.61'$
 $E = 8.51'$
 $\theta = \dots$
 $T.R. = \dots$
 $S.E. RUN = \dots$
 $P.C. STA = 48+33.59$
 $P.T. STA = 48+88.20$

PLOT DATE = Wed Mar 21 09:26:01 2007
 PLOT SCALE = 20.0000' / 1" IN.
 USER NAME = mag111

| REVISIONS | |
|-----------|------|
| NAME | DATE |
| | |
| | |
| | |
| | |
| | |
| | |
| | |
| | |
| | |
| | |

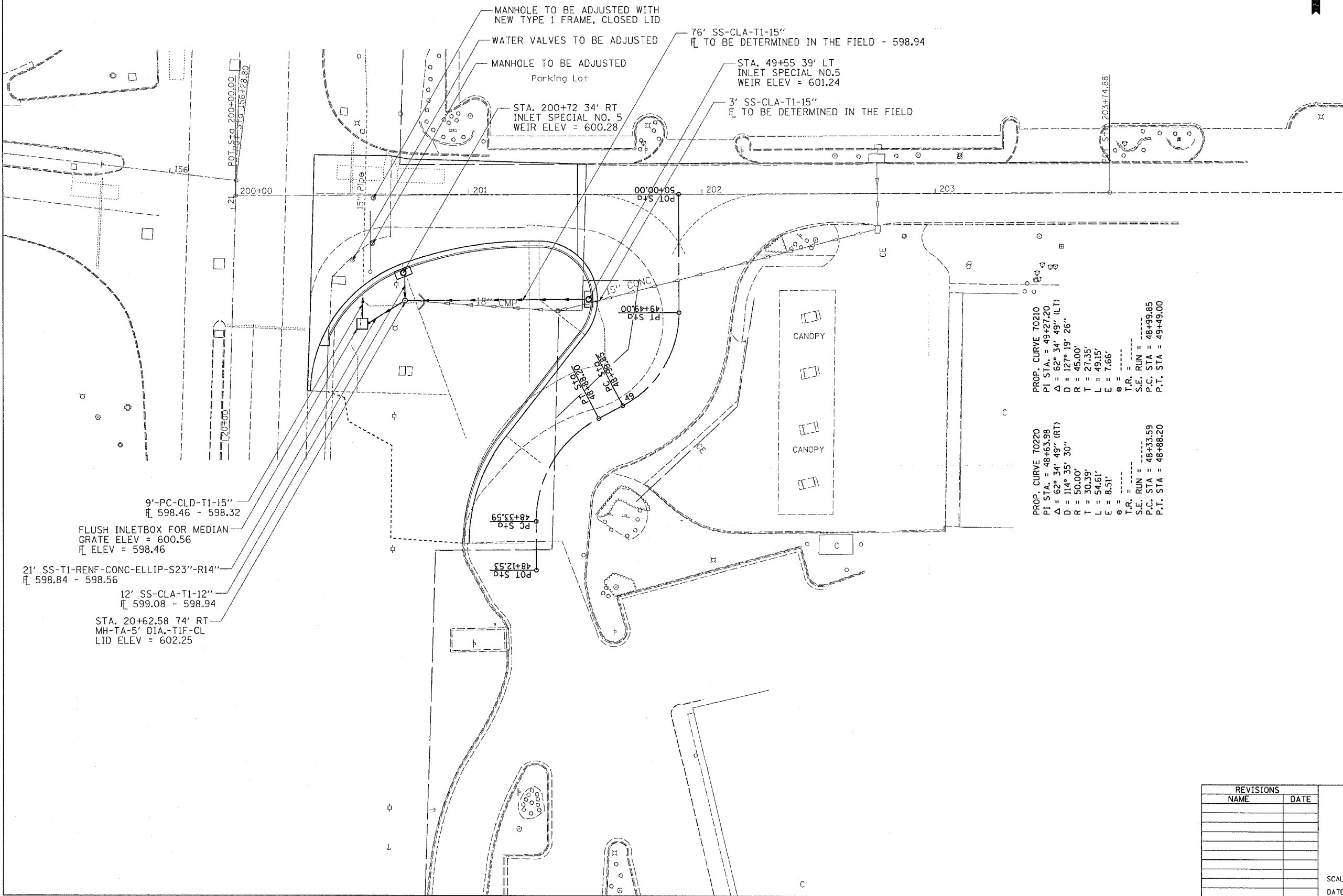
ILLINOIS DEPARTMENT OF TRANSPORTATION

SCALE: VERT.
 HORIZ.
 DATE

DRAWN BY
 CHECKED BY

| | | | | |
|---------------------|--------------|---------------------------|--------------|-----------|
| F.A.U. RTE. | SECTION | COUNTY | TOTAL SHEETS | SHEET NO. |
| 5789 | (33&40)-1-FR | ROCK ISLAND | 30 | 17 |
| STA. | | TO STA. | | |
| FED. ROAD DIST. NO. | | ILLINOIS FED. AID PROJECT | | |

DRAINAGE DETAILS



PROP. CURVE 70210
 PI STA. = 49+27.20
 Δ = 62° 34' 49" (LT)
 D = 127° 19' 26"
 R = 45.00'
 T = 27.35'
 L = 49.15'
 E = 7.66'
 θ = -----
 T.R. = -----
 S.E. RUN = -----
 P.C. STA = 48+99.85
 P.T. STA = 49+49.00

PROP. CURVE 70220
 PI STA. = 48+63.98
 Δ = 62° 34' 49" (RT)
 D = 114° 35' 30"
 R = 50.00'
 T = 30.39'
 L = 54.61'
 E = 8.51'
 θ = -----
 T.R. = -----
 S.E. RUN = -----
 P.C. STA = 48+33.59
 P.T. STA = 48+88.20

9'-PC-CLD-T1-15"
 ELEV = 598.46 - 598.32
 FLUSH INLETBOX FOR MEDIAN
 GRATE ELEV = 600.56
 PIPE ELEV = 598.46
 21' SS-T1-RENF-CONC-ELLIP-S23"-R14"
 ELEV = 598.84 - 598.56
 12' SS-CLA-T1-12"
 ELEV = 599.08 - 598.94
 STA. 20+62.58 74' RT
 MH-TA-5' DIA.-TIF-CL
 LID ELEV = 602.25

PLOT DATE = Wed Mar 21 09:52:05Z 2007
 FILE NAME = I:\2006\64C16\64C16.dgn
 PLOT SCALE = 20.0000 / IN.
 USER NAME = mgj11j

| REVISIONS | |
|-----------|------|
| NAME | DATE |
| | |
| | |
| | |
| | |
| | |
| | |
| | |
| | |
| | |
| | |

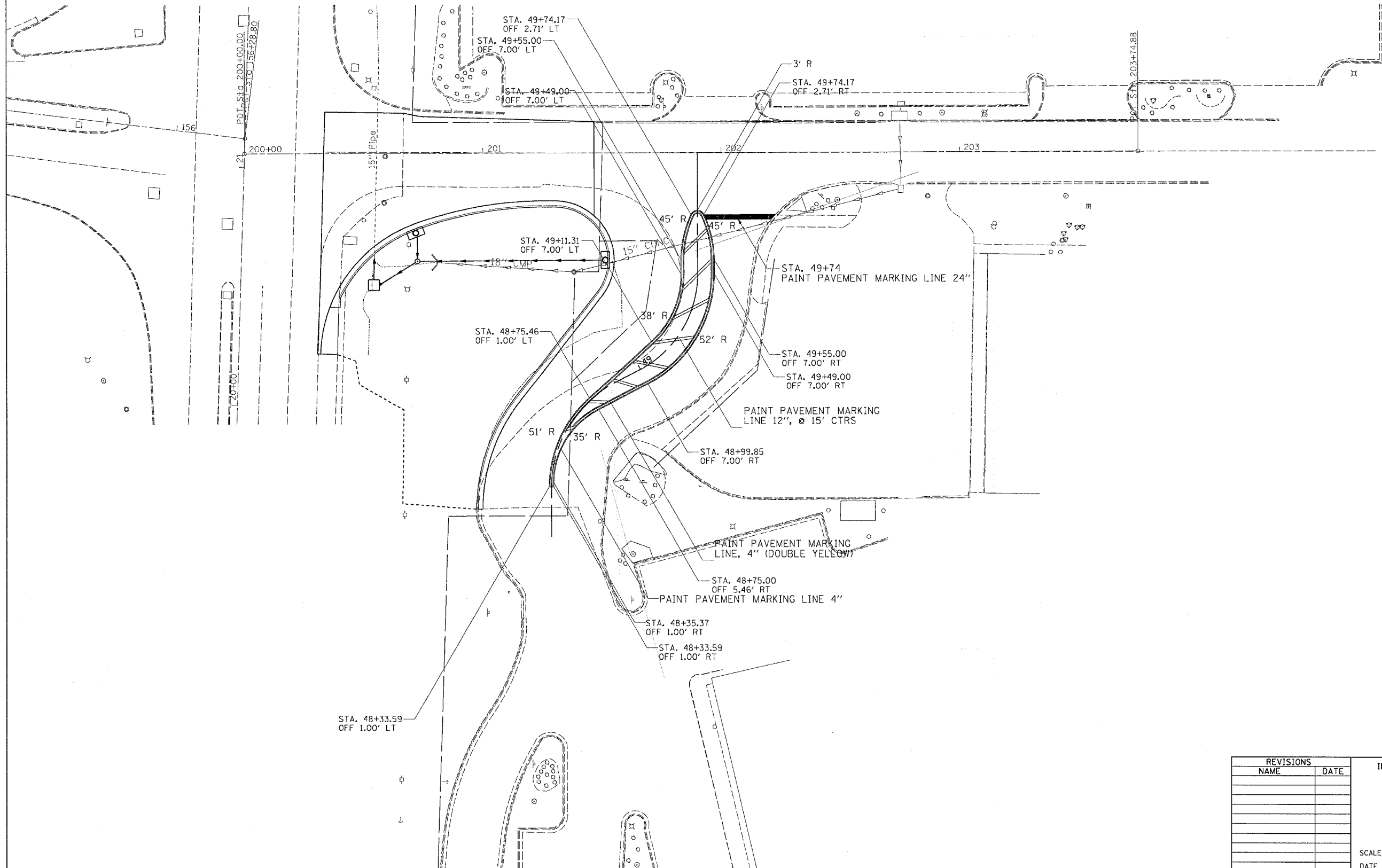
ILLINOIS DEPARTMENT OF TRANSPORTATION

SCALE: VERT.
 HORIZ.
 DATE

DRAWN BY
 CHECKED BY

| | | | | |
|---------------------|--------------|-------------|------------------|-----------|
| F.A.U. RTE. | SECTION | COUNTY | TOTAL SHEETS | SHEET NO. |
| 5789 | (33&40)-1-FR | ROCK ISLAND | 30 | 18 |
| STA. | | TO STA. | | |
| FED. ROAD DIST. NO. | | ILLINOIS | FED. AID PROJECT | |

PAVEMENT MARKING DETAILS



PLOT DATE = Wed Mar 21 09:28:02 2007
 FILE NAME = c:\pwork\mcs\17284\386\3861385a\pvdgn
 PLOT SCALE = 28.0000' / IN.
 USER NAME = megilij

| REVISIONS | |
|-----------|------|
| NAME | DATE |
| | |
| | |
| | |
| | |
| | |
| | |
| | |
| | |
| | |
| | |

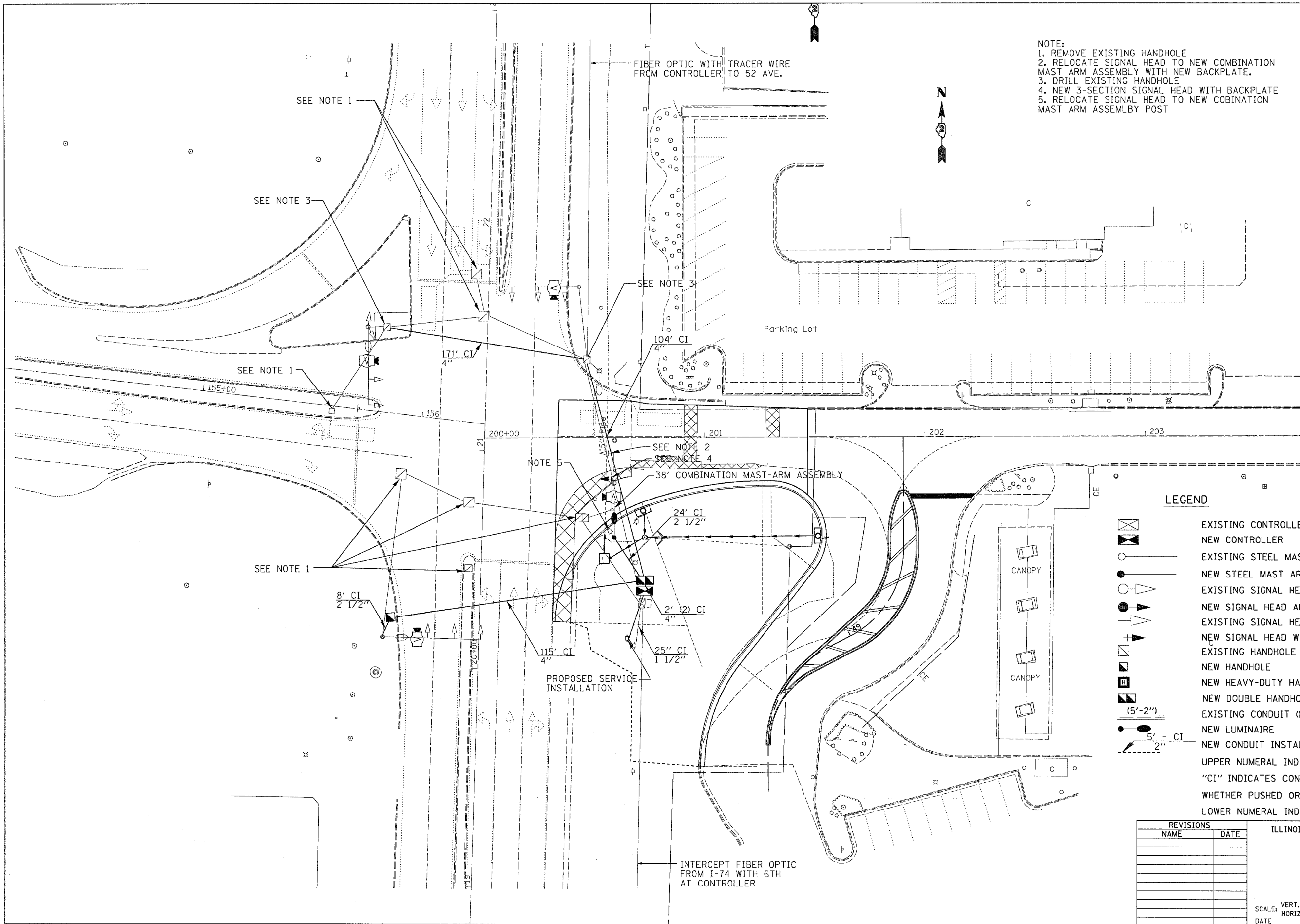
ILLINOIS DEPARTMENT OF TRANSPORTATION

SCALE: VERT. _____
 HORIZ. _____
 DATE _____

DRAWN BY _____
 CHECKED BY _____

| F.A.U. RTE. | SECTION | COUNTY | TOTAL SHEETS | SHEET NO. |
|---------------------|--------------|------------------|--------------|-----------|
| 5789 | (33&40)-1-FR | ROCK ISLAND | 30 | 20 |
| STA. | | TO STA. | | |
| FED. ROAD DIST. NO. | ILLINOIS | FED. AID PROJECT | | |

- NOTE:
1. REMOVE EXISTING HANDHOLE
 2. RELOCATE SIGNAL HEAD TO NEW COMBINATION MAST ARM ASSEMBLY WITH NEW BACKPLATE.
 3. DRILL EXISTING HANDHOLE
 4. NEW 3-SECTION SIGNAL HEAD WITH BACKPLATE
 5. RELOCATE SIGNAL HEAD TO NEW COBINATION MAST ARM ASSEMBLY POST



LEGEND

- EXISTING CONTROLLER
- NEW CONTROLLER
- EXISTING STEEL MAST ARM ASSEMBLY AND POLE
- NEW STEEL MAST ARM ASSEMBLY AND POLE
- EXISTING SIGNAL HEAD AND POST
- NEW SIGNAL HEAD AND POST
- EXISTING SIGNAL HEAD
- NEW SIGNAL HEAD WITH BACKPLATE
- EXISTING HANDHOLE
- NEW HANDHOLE
- NEW HEAVY-DUTY HANDHOLE
- NEW DOUBLE HANDHOLE
- EXISTING CONDUIT (LENGTH AND SIZE)
- NEW LUMINAIRE
- NEW CONDUIT INSTALLED, NON-METALLIC
- UPPER NUMERAL INDICATES LENGTH
- "CI" INDICATES CONDUIT INSTALLED, NON-METALLIC
- WHETHER PUSHED OR TRENCHED
- LOWER NUMERAL INDICATES SIZE OF CONDUIT

| REVISIONS | |
|-----------|------|
| NAME | DATE |
| | |
| | |
| | |
| | |
| | |
| | |
| | |
| | |
| | |
| | |

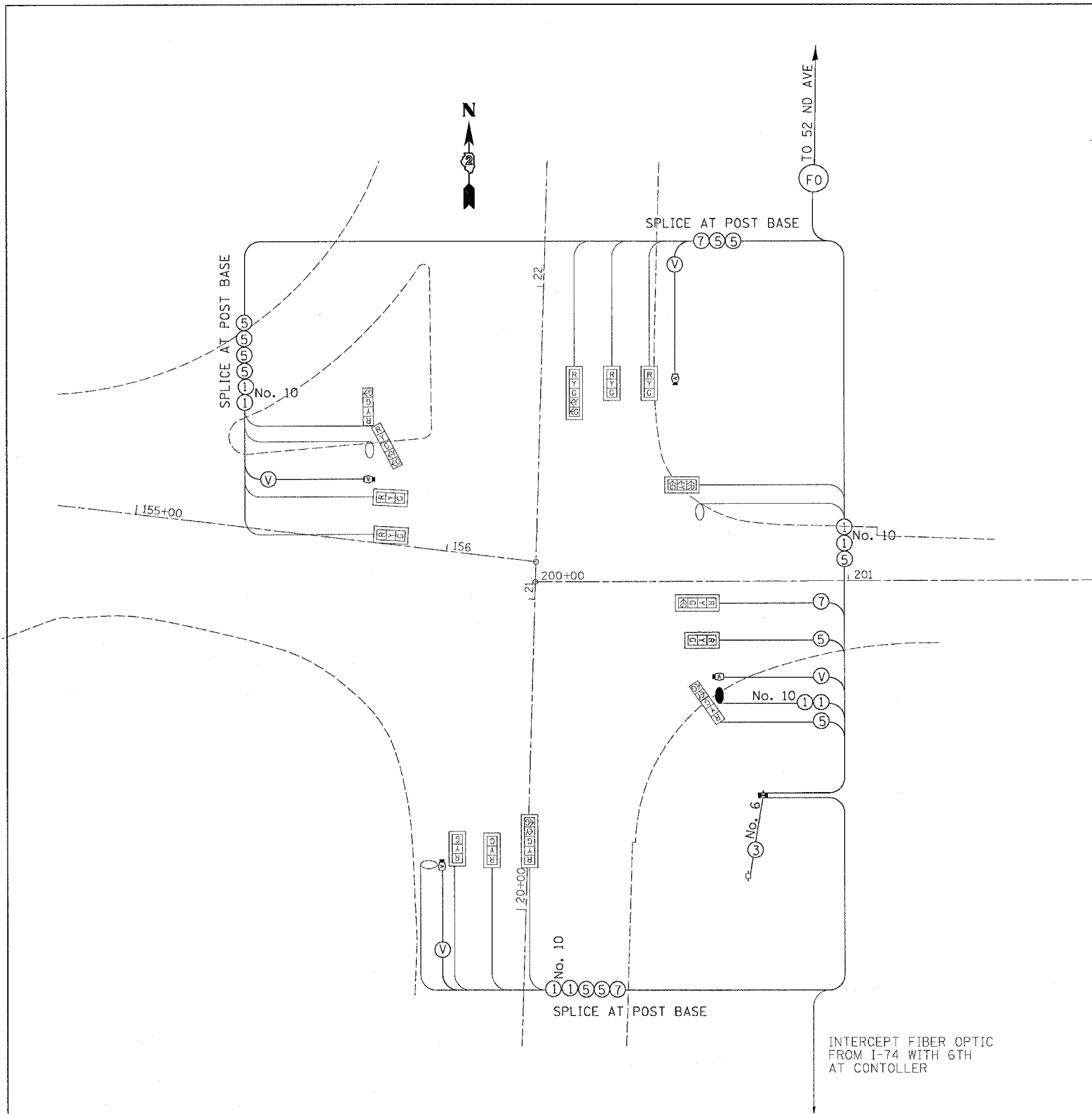
ILLINOIS DEPARTMENT OF TRANSPORTATION

SCALE: VERT. / HORIZ. / DATE

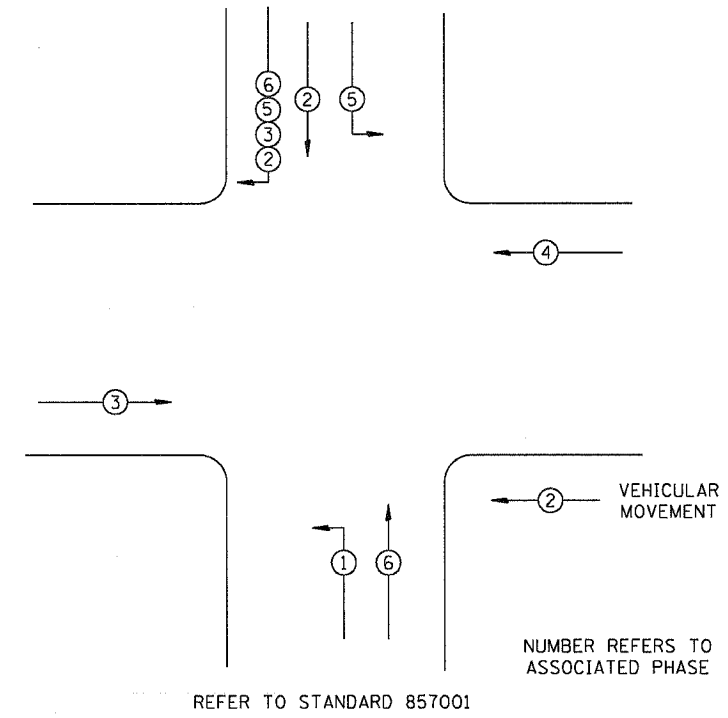
DRAWN BY / CHECKED BY

PLOT DATE = Wed Mar 21 09:24:05 2007
 FILE NAME = s:\projects\33&40\33&40\33&40.dgn
 PLOT SCALE = 28.0000 / IN.
 USER NAME = meg111

| | | | | |
|---------------------|--------------|------------------|--------------|-----------|
| F.A.U. RYE | SECTION | COUNTY | TOTAL SHEETS | SHEET NO. |
| 5789 | (33&40)-1-FR | ROCK ISLAND | 30 | 21 |
| STA. | | TO STA. | | |
| FED. ROAD DIST. NO. | ILLINOIS | FED. AID PROJECT | | |



PHASE DESIGNATION DIAGRAM



| DETECTOR ASSIGNMENT | | |
|---------------------|-----------|------------|
| DETECTOR | PHASE NO. | DIRECTION |
| A | 4 | EB ADVANCE |
| B | 4 | EB PRESENT |
| C | 8 | WB PRESENT |
| D | 2 | NB ADVANCE |
| E | 2 | NB PRESENT |
| F | 1 | NB LEFT |
| G | 6 | SB ADVANCE |
| H | 6 | SB PRESENT |
| I | 1 | SB LEFT |

- LEGEND
- INDICATES NUMBER OF NEW CONDUCTORS. ALL CABLE IS NO. 14 EXCEPT AS INDICATED.
 - EXISTING SIGNAL HEAD WITH OR WITHOUT BACKPLATE
 - LUMINAIRE, 250 WATT

| REVISIONS | |
|-----------|------|
| NAME | DATE |
| | |
| | |
| | |
| | |
| | |
| | |
| | |
| | |
| | |
| | |

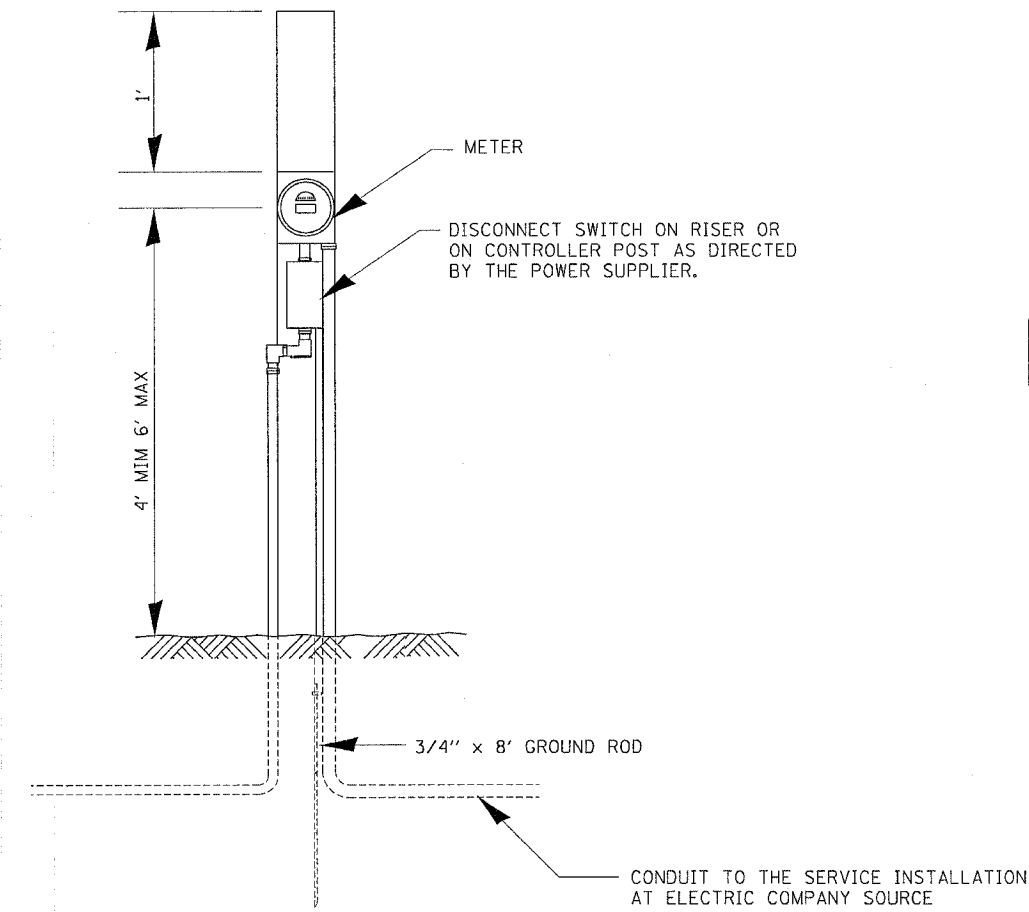
ILLINOIS DEPARTMENT OF TRANSPORTATION

SCALE: VERT. _____
 HORIZ. _____

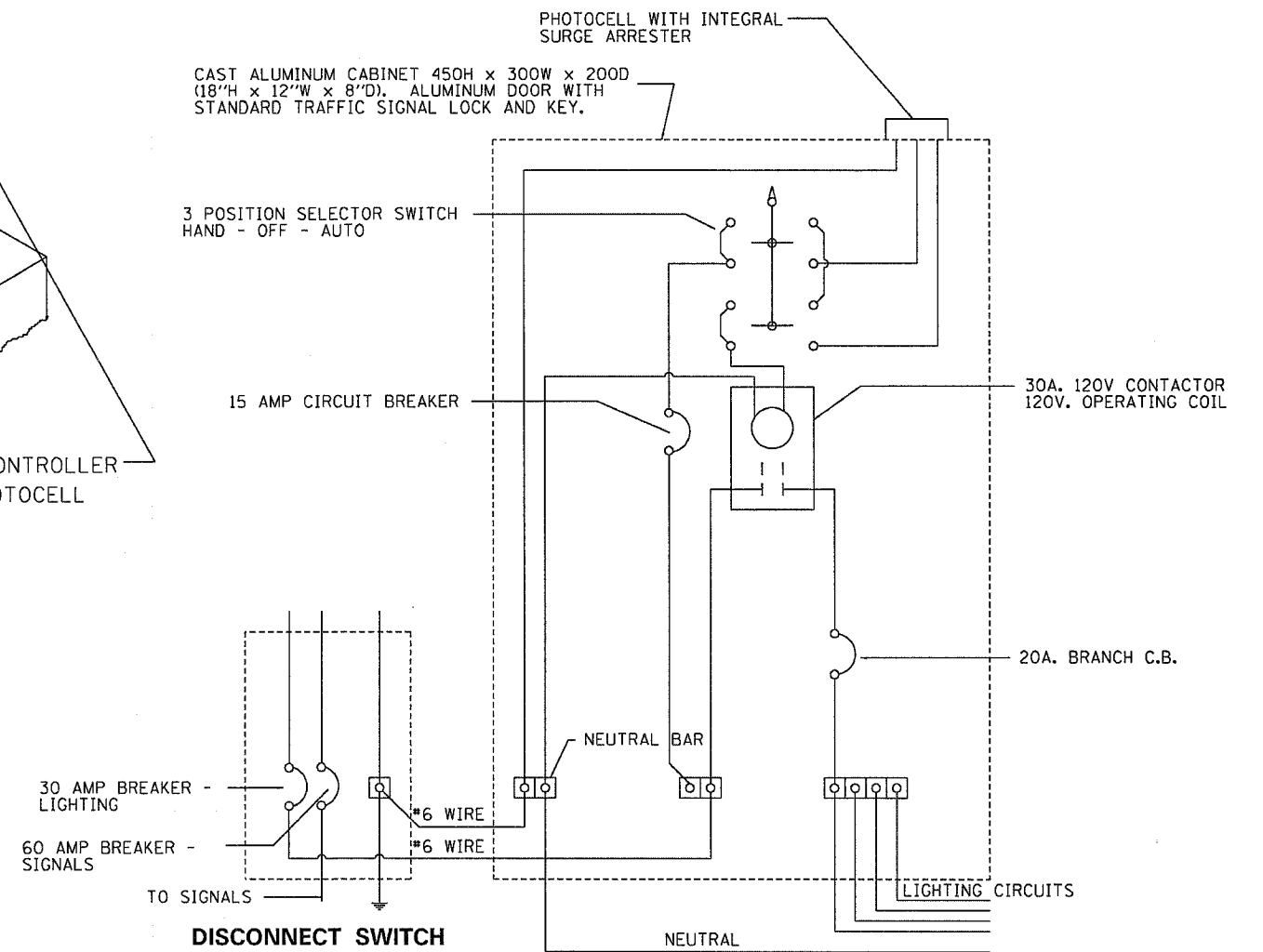
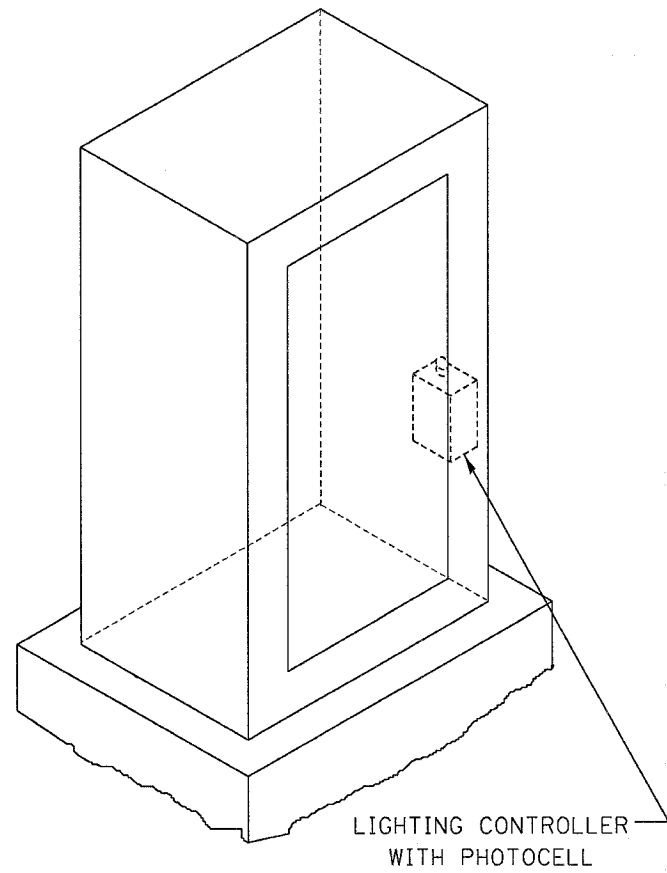
DATE _____ DRAWN BY _____
 CHECKED BY _____

PLOT DATE = Wed Mar 21 09:24:37 2007
 FILE NAME = s:\projects\64c16\388\388.dgn
 PLOT SCALE = 28.0000 / IN.
 USER NAME = meg111

| | | | | |
|---------------------|--------------|------------------|--------------|-----------|
| F.A.U. RTE. | SECTION | COUNTY | TOTAL SHEETS | SHEET NO. |
| 5789 | (33&40)-1-FR | ROCK ISLAND | 30 | 22 |
| STA. | | TO STA. | | |
| FED. ROAD DIST. NO. | ILLINOIS | FED. AID PROJECT | | |



ELECTRIC SERVICE INSTALLATION, SPECIAL
(SEE SPECIAL PROVISIONS)
(DETAIL ONLY SHOW GENERAL SERVICE WHICH VARIES BY PROVIDERS)



LIGHTING CONTROLLER (PHOTOCELL RELAY)

PLOT DATE = Wed Mar 21 09:24:37 2007
 PLOT SCALE = 50
 USER NAME = meg111

| REVISIONS | |
|-----------|------|
| NAME | DATE |
| | |
| | |
| | |
| | |
| | |
| | |
| | |
| | |
| | |
| | |

ILLINOIS DEPARTMENT OF TRANSPORTATION

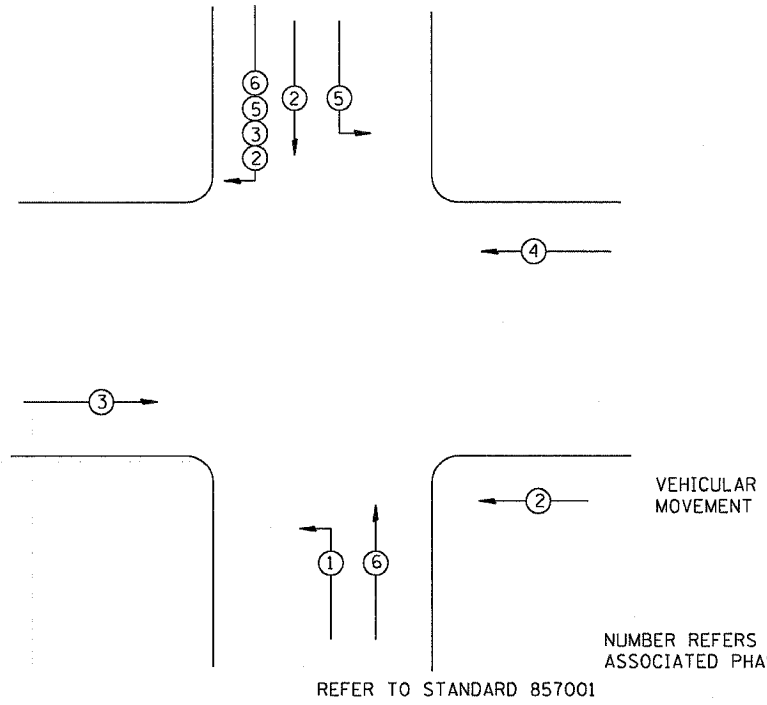
SCALE: VERT.
HORIZ.

DRAWN BY
CHECKED BY

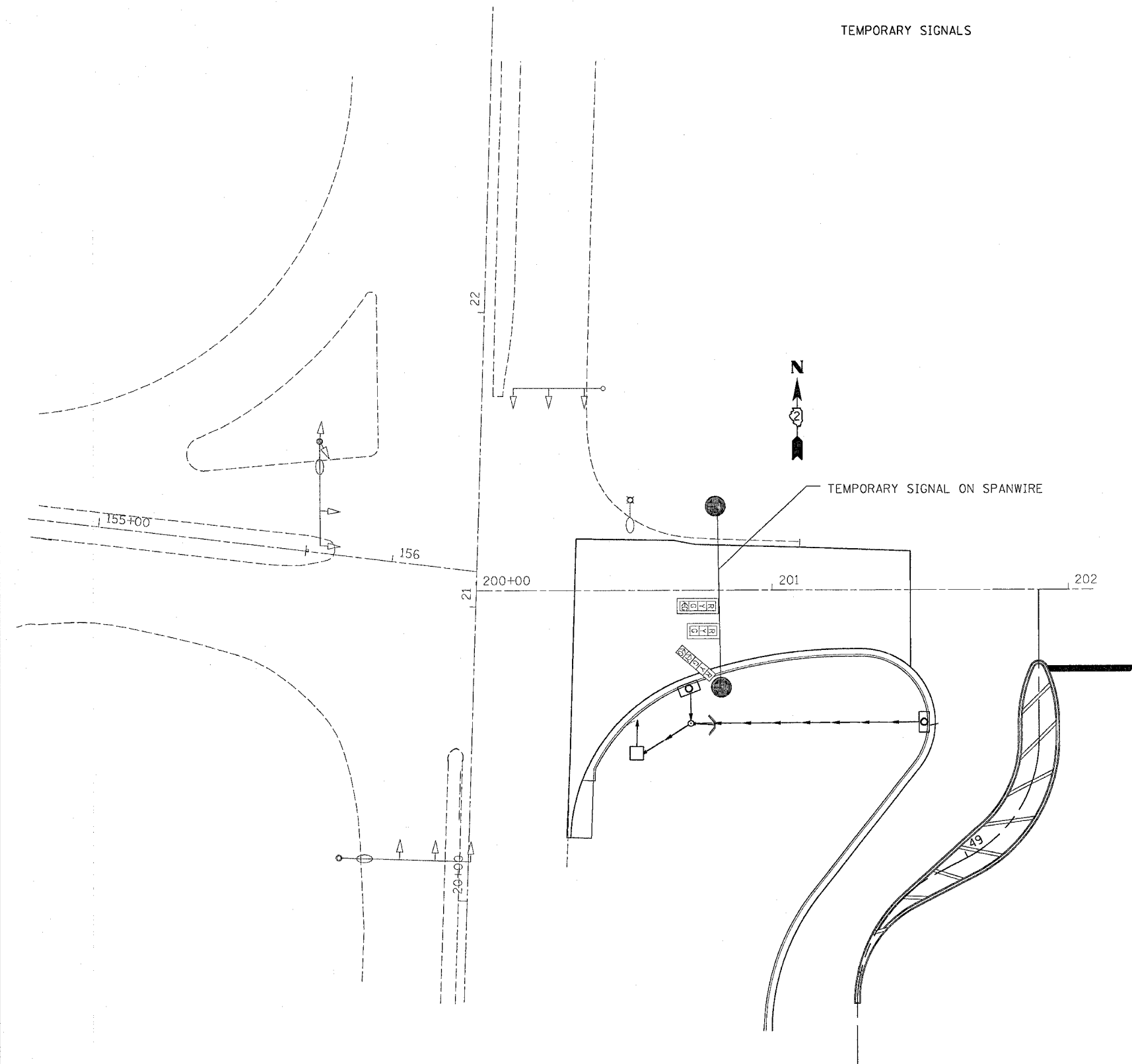
| | | | | |
|---------------------|--------------|------------------|--------------|-----------|
| F.A.U. RTE. | SECTION | COUNTY | TOTAL SHEETS | SHEET NO. |
| 5789 | (33&40)-1-FR | ROCK ISLAND | 30 | 23 |
| STA. | | TO STA. | | |
| FED. ROAD DIST. NO. | ILLINOIS | FED. AID PROJECT | | |

TEMPORARY SIGNALS

PHASE DESIGNATION DIAGRAM



NOTE:
 ONLY ONE MAST ARM WILL BE REPLACE IN A NEW LOCATION WHICH WILL REQUIRE TEMPORARY SIGNAL INSTALLATION. THE CONTRACTOR SHALL BE RESPONSIBLE FOR TEMPORARY WIRE TO THE EXISTING SIGNALS PRIOR THE SWITCHOVER TO THE PROPOSED CONTROLLER CABINET AND NEW MAST- ARM ASSEMBLY.



PLOT DATE = Wed Mar 21 09:24:37 2007
 FILE NAME = c:\p\proj\33&40\385\o64385.dgn
 PLOT SCALE = 28.0000 / 1 IN.
 USER NAME = mgj11J

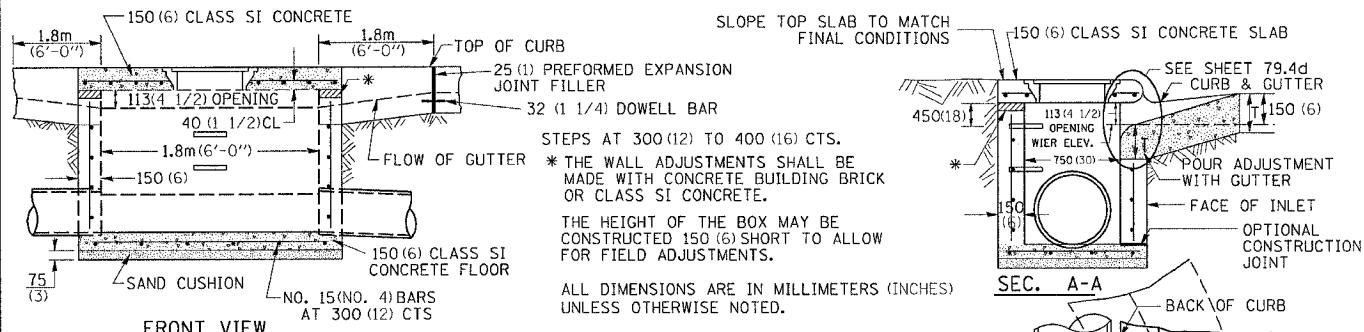
| REVISIONS | |
|-----------|------|
| NAME | DATE |
| | |
| | |
| | |
| | |
| | |
| | |
| | |
| | |
| | |
| | |

ILLINOIS DEPARTMENT OF TRANSPORTATION

SCALE: VERT. DRAWN BY
 HORIZ. CHECKED BY
 DATE

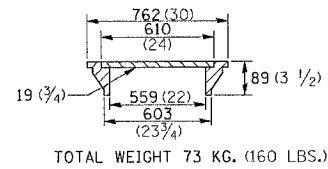
| F.A.U. RTE. | SECTION | COUNTY | TOTAL SHEETS | SHEET NO. |
|---------------------|--------------|------------------|--------------|-----------|
| 5789 | (33&40)-1-FR | ROCK ISLAND | 30 | 24 |
| STA. | TO STA. | | | |
| FED. ROAD DIST. NO. | ILLINOIS | FED. AID PROJECT | | |

INLET SPECIAL NO. 5



SEE STANDARD 602701 FOR DETAILS OF STEPS.
 25 (1) PREFORMED EXPANSION JOINTS AS SHOWN SHALL BE PROVIDED ON EACH SIDE OF INLET.
 CLASS SI CONCRETE OR PRECAST CONCRETE SHALL BE USED THROUGHOUT.
 THE SIDE WALLS MAY BE BUILT AS PRECAST SEGMENTAL SECTIONS.
 REINFORCEMENT FOR INLET SPECIAL NO. 5 SHALL BE ACCORDING TO DISTRICT STANDARD 79.4e

LIGHT WEIGHT MANHOLE CASTING

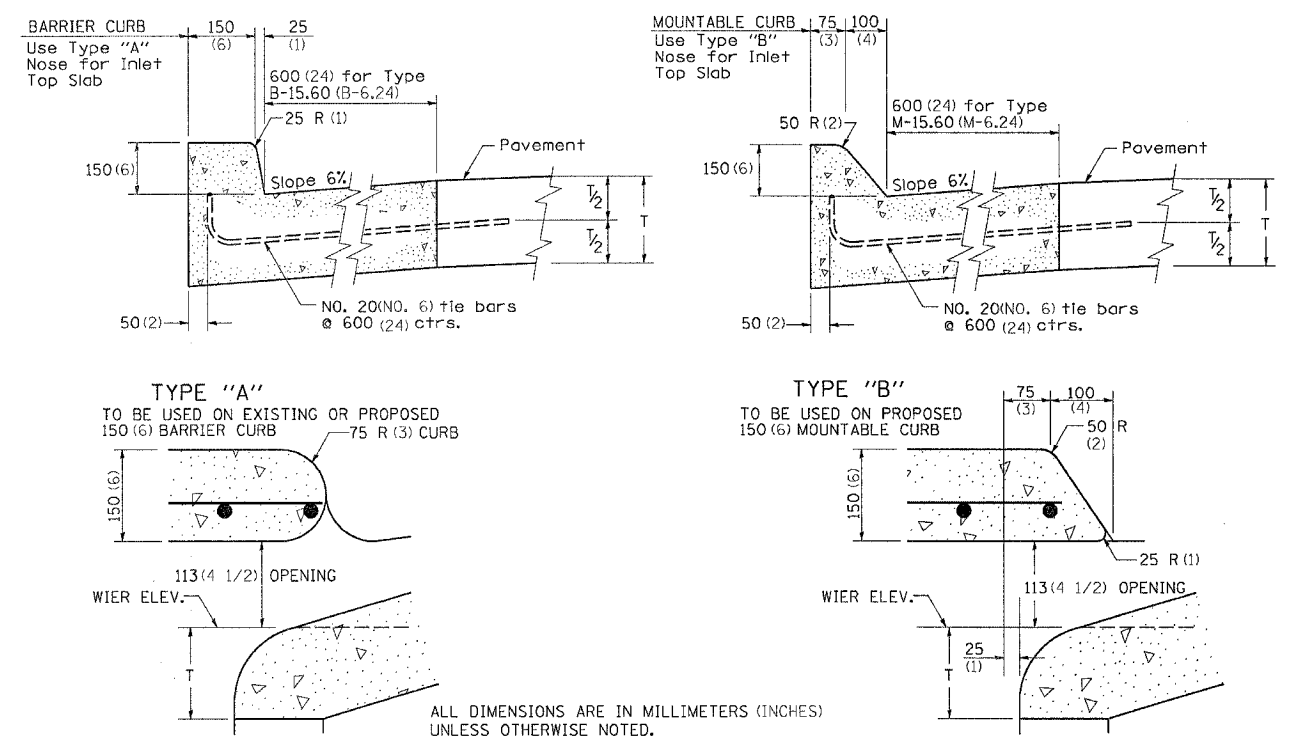


NOTES
 STEPS SHALL BE OMITTED WHEN DEPTH OF INLET IS LESS THAN 1.5 m (5 ft.)
 THE INLET SHALL BE CAST IN PLACE OR PRECAST.
 EXCEPT AS NOTED HEREON INLET SPECIAL NO. 5 SHALL BE CONSTRUCTED IN ACCORDANCE WITH SECTION 602 OF THE STANDARD SPECIFICATIONS.
 THE CONTRACT UNIT PRICE EACH FOR INLET SPECIAL NO. 5 SHALL INCLUDE THE COST OF FURNISHING AND INSTALLING THE FRAME, LID, REINFORCEMENT BARS, FLOOR AND TOP SLABS, CAST IRON STEPS (IF USED).
 THE CURB AND GUTTER WILL BE PAID FOR SEPARATELY AND WILL BE MEASURED THROUGH THE INLET.
 THE CURB AND GUTTER ADJACENT TO AND 1.8m (6 FT) ON EITHER SIDE OF THE INLET SHALL BE CONSTRUCTED AS SHOWN WITH NO ADDITIONAL COMPENSATION FOR THE TRANSITION.

INLET SPECIAL NO. 5 79.4b

REVISED 4-4-05

NOSE TYPE FOR INLET TOP SLAB



TYPE "A"
 TO BE USED ON EXISTING OR PROPOSED 150 (6) BARRIER CURB

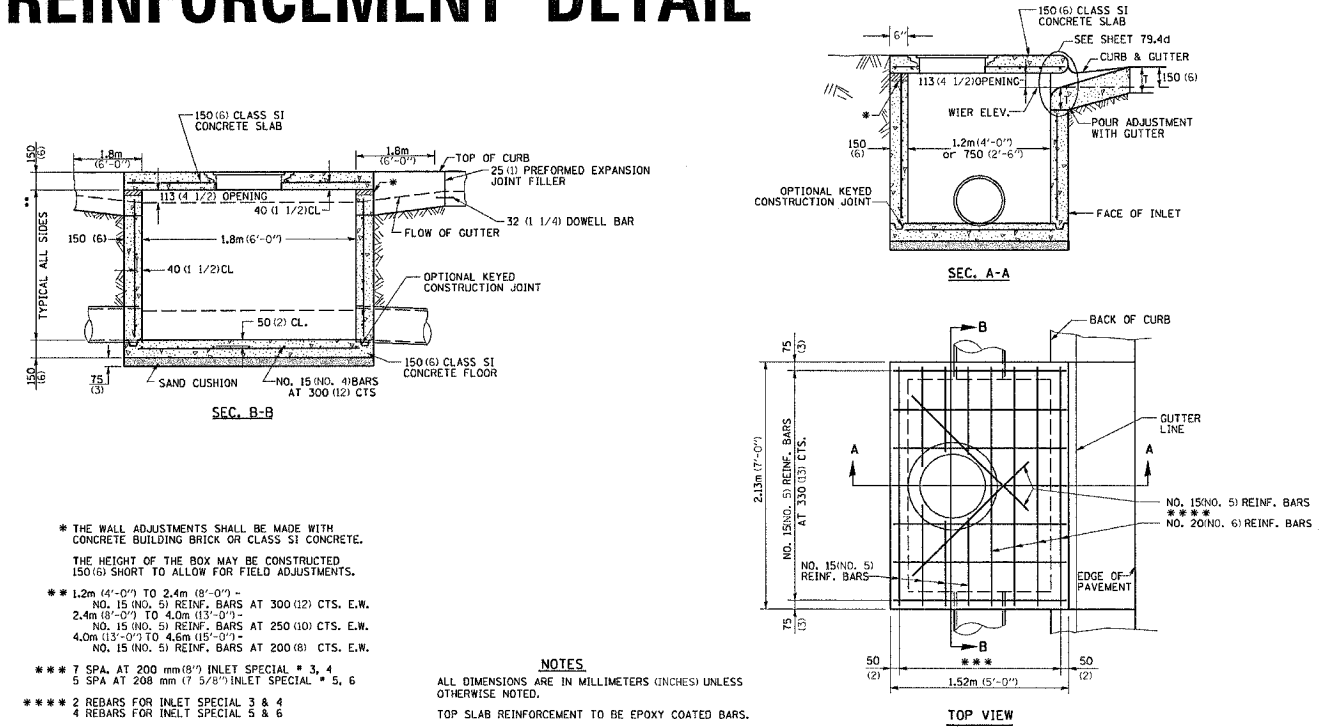
TYPE "B"
 TO BE USED ON PROPOSED 150 (6) MOUNTABLE CURB

ALL DIMENSIONS ARE IN MILLIMETERS (INCHES) UNLESS OTHERWISE NOTED.

NOSE TYPE FOR INLET TOP SLAB 79.4d

REVISED 2-14-95

INLET SPECIAL NO. 3, 4, 5, 6 REINFORCEMENT DETAIL



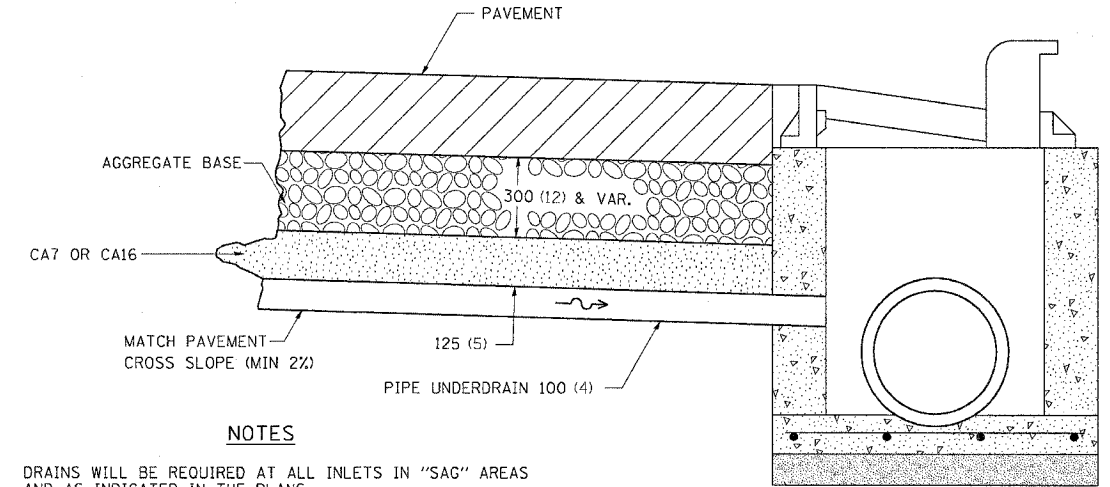
* THE WALL ADJUSTMENTS SHALL BE MADE WITH CONCRETE BUILDING BRICK OR CLASS SI CONCRETE.
 THE HEIGHT OF THE BOX MAY BE CONSTRUCTED 150(6) SHORT TO ALLOW FOR FIELD ADJUSTMENTS.
 * 1.2m (4'-0") TO 2.4m (8'-0") - NO. 15 (NO. 5) REINF. BARS AT 300 (12) CTS. E.W.
 2.4m (8'-0") TO 4.0m (13'-0") - NO. 15 (NO. 5) REINF. BARS AT 250 (10) CTS. E.W.
 4.0m (13'-0") TO 4.6m (15'-0") - NO. 15 (NO. 5) REINF. BARS AT 200 (8) CTS. E.W.
 * * * 7 SPA. AT 200 mm (8") INLET SPECIAL # 3, 4
 5 SPA AT 200 mm (8") INLET SPECIAL # 5, 6
 * * * * 2 REBARS FOR INLET SPECIAL 3 & 4
 4 REBARS FOR INLET SPECIAL 5 & 6

NOTES
 ALL DIMENSIONS ARE IN MILLIMETERS (INCHES) UNLESS OTHERWISE NOTED.
 TOP SLAB REINFORCEMENT TO BE EPOXY COATED BARS.

INLET SPECIAL NO. 3, 4, 5, 6 REINFORCEMENT DETAIL 79.4e

REVISED 4-4-05

DRAIN FOR AGGREGATE BASES IN URBAN AREAS



NOTES
 DRAINS WILL BE REQUIRED AT ALL INLETS IN "SAG" AREAS AND AS INDICATED IN THE PLANS.
 THIS WORK SHALL BE COMPLETED ACCORDING TO SECTION 601 OF THE STANDARD SPECIFICATIONS.
 THIS WORK WILL BE PAID FOR AT THE CONTRACT UNIT PRICE PER METER (FOOT) FOR PIPE UNDERDRAINS OF THE DIAMETER SPECIFIED WHICH PRICE SHALL INCLUDE THE CA7 OR CA16 AND THE CONNECTION TO THE INLET.
 ALL DIMENSIONS ARE IN MILLIMETERS (INCHES) UNLESS OTHERWISE NOTED.

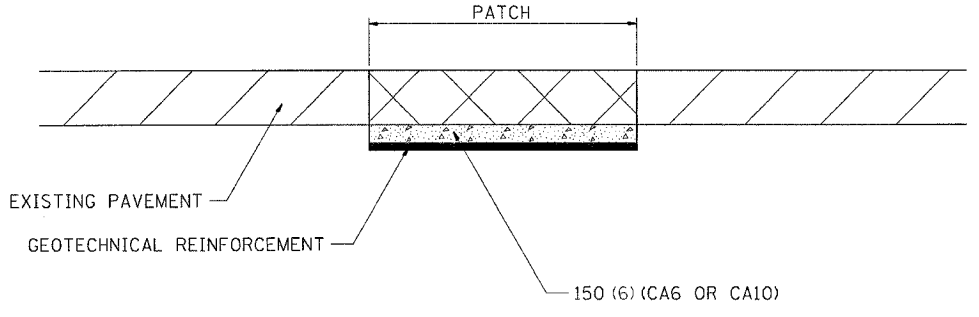
DRAIN FOR AGGREGATE BASES IN URBAN AREAS 88.4

REVISED 4-7-99

PLOT DATE = Wed Mar 21 08:50:53 2007
 FILE NAME = c:\p\projects\62043864\3864\3864.dgn
 PLOT SCALE = 50.00000 / IN.
 REFERENCE = REF#

| | | | | |
|---------------------|--------------|------------------|--------------|-----------|
| F.A.U. RTE. | SECTION | COUNTY | TOTAL SHEETS | SHEET NO. |
| 5789 | (33&40)-1-FR | ROCK ISLAND | 30 | 25 |
| STA. | | TO STA. | | |
| FED. ROAD DIST. NO. | ILLINOIS | FED. AID PROJECT | | |

SUBGRADE REPLACEMENT



NOTES:

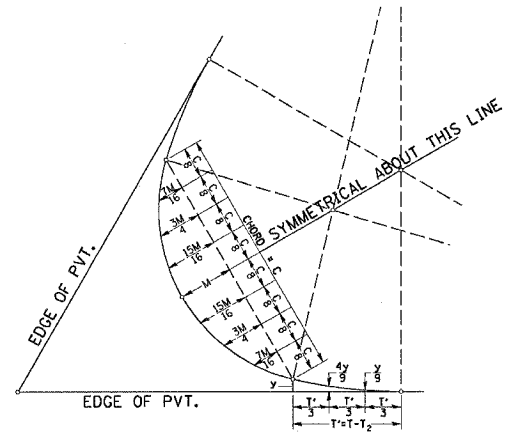
THE CA 6 OR CA10 AND UNSUITABLE MATERIAL SHALL BE PAID FOR AT THE CONTRACT UNIT PRICE PER CU YD FOR GRANULAR SUBGRADE REPLACEMENT.

ALL DIMENSIONS ARE IN MILLIMETERS (INCHES) UNLESS OTHERWISE NOTED.

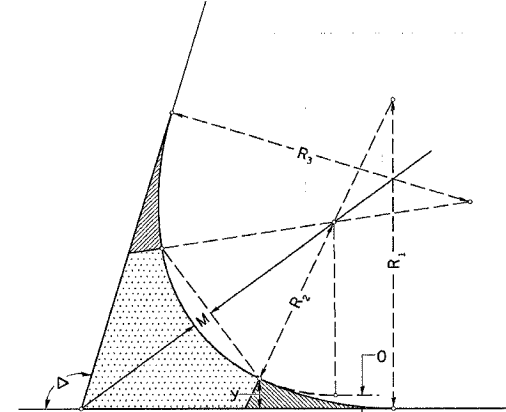
SUBGRADE REPLACEMENT 97.4

REVISED 4-23-93

THREE CENTER CURVE DATA



FIELD LAYOUT METHOD



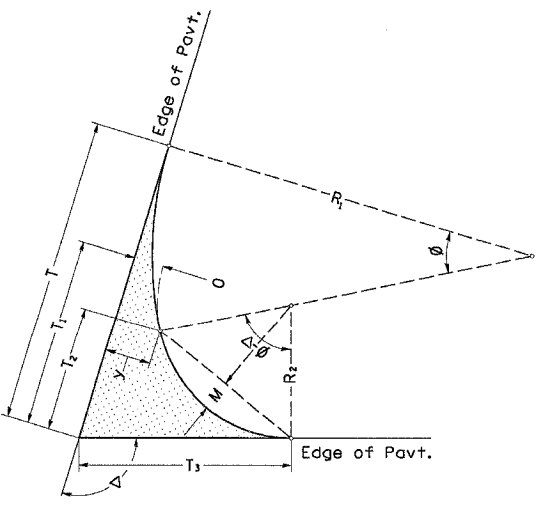
FOR SYMMETRICAL CURVES

SYMMETRICAL CURVES

| CURVE # | | | | | | |
|------------------|--|--|--|--|--|--|
| R ₁ | | | | | | |
| R ₂ | | | | | | |
| R ₃ | | | | | | |
| O | | | | | | |
| Δ | | | | | | |
| T | | | | | | |
| T ₁ | | | | | | |
| T ₂ | | | | | | |
| T' | | | | | | |
| y | | | | | | |
| $\frac{4y}{9}$ | | | | | | |
| $\frac{y}{9}$ | | | | | | |
| M | | | | | | |
| $\frac{15M}{16}$ | | | | | | |
| $\frac{3M}{4}$ | | | | | | |
| $\frac{7M}{16}$ | | | | | | |
| C | | | | | | |

ALL DIMENSIONS ARE IN MILLIMETERS (INCHES) UNLESS OTHERWISE NOTED.

TWO CENTER CURVE DATA



TWO CENTER CURVES

| CURVE # | 1 | | | | | |
|------------------|--------|--|--|--|--|--|
| R ₁ | 160 | | | | | |
| R ₂ | 60 | | | | | |
| O | 6 | | | | | |
| Δ | 88.169 | | | | | |
| T | 92.04 | | | | | |
| T ₁ | 57.92 | | | | | |
| T ₂ | 37.45 | | | | | |
| T ₃ | 64.12 | | | | | |
| y | 9.60 | | | | | |
| $\frac{4y}{9}$ | 4.27 | | | | | |
| $\frac{y}{9}$ | 1.07 | | | | | |
| M | 10.32 | | | | | |
| $\frac{15M}{16}$ | 9.68 | | | | | |
| $\frac{3M}{4}$ | 7.74 | | | | | |
| $\frac{7M}{16}$ | 4.52 | | | | | |
| C | 67.29 | | | | | |

TWO AND THREE CENTER CURVE DATA 92.2

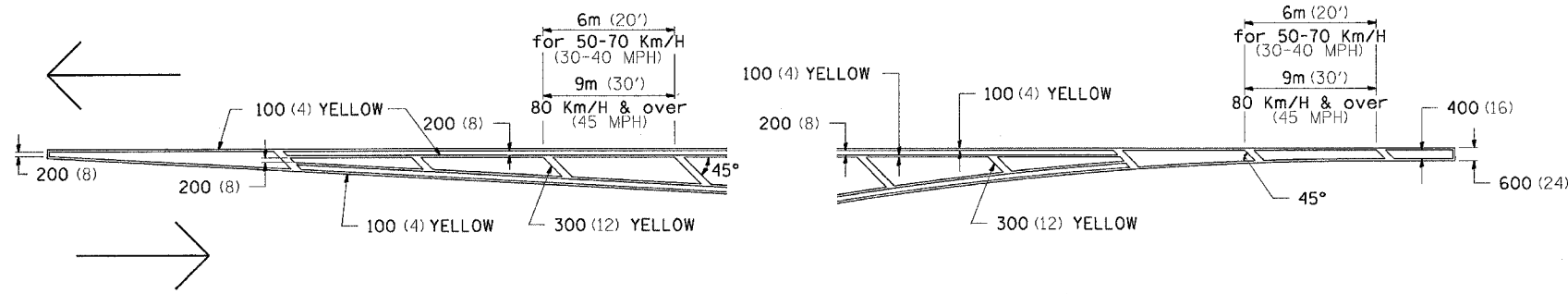
REVISED 3-22-90

PLOT DATE = Wed Mar 21 09:51:01 2007
 FILE NAME = s:\projects\2284\366\081366.rvt.dgn
 PLOT SCALE = 50.0000 / 1" = REF#

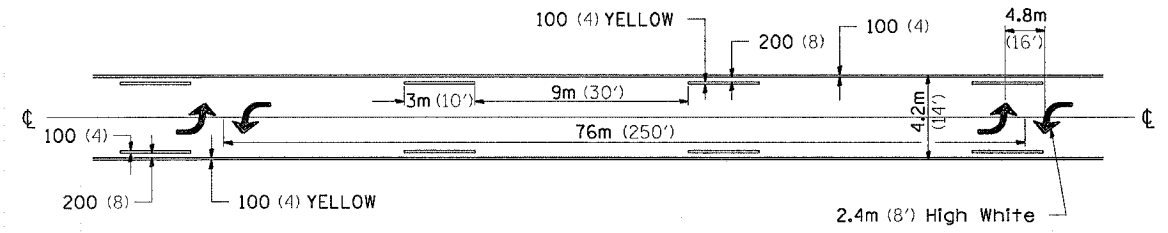
| | | | | |
|---------------------|--------------|------------------|--------------|-----------|
| F.A.U. RTE. | SECTION | COUNTY | TOTAL SHEETS | SHEET NO. |
| 5789 | (33&40)-1-FR | ROCK ISLAND | 30 | 26 |
| STA. | | TO STA. | | |
| FED. ROAD DIST. NO. | ILLINOIS | FED. AID PROJECT | | |

TYPICAL PAVEMENT MARKINGS

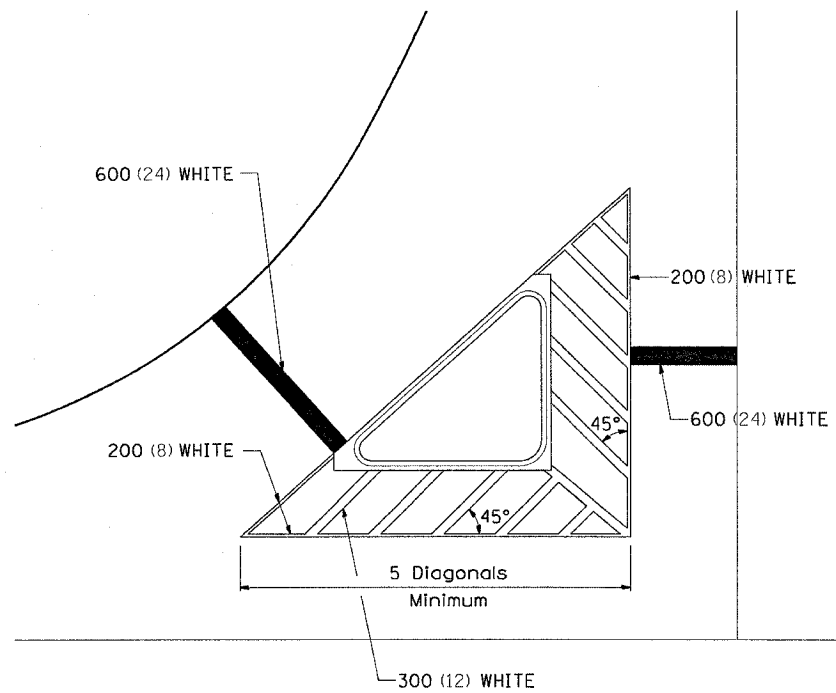
TYPICAL PAVEMENT MARKING FOR FLUSH MEDIAN AT LEFT TURN LANE



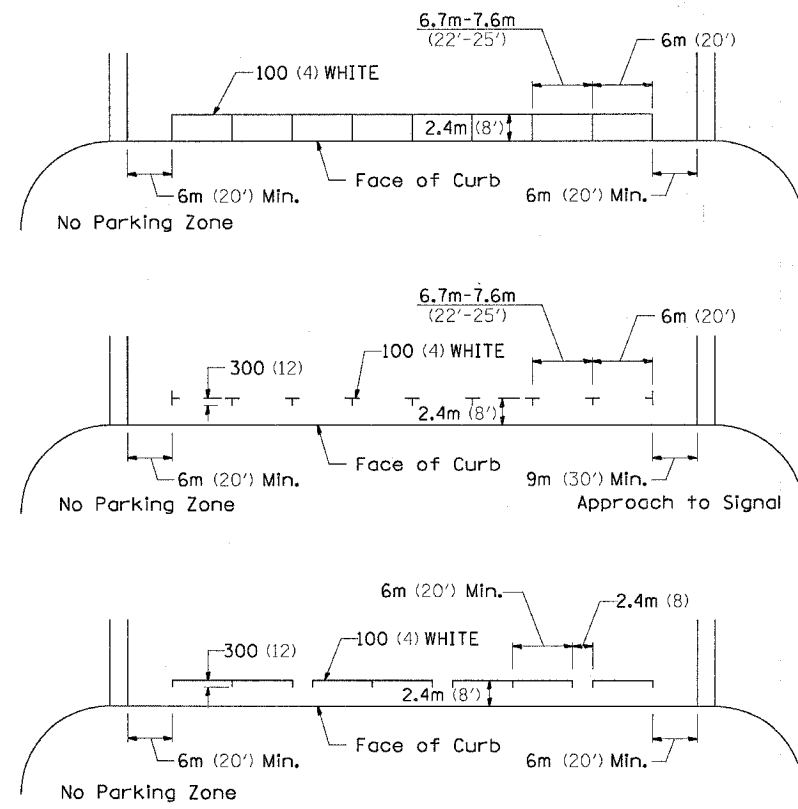
MEDIAN PAVEMENT MARKING



TYPICAL ISLAND OFFSET SHOULDER WIDTH

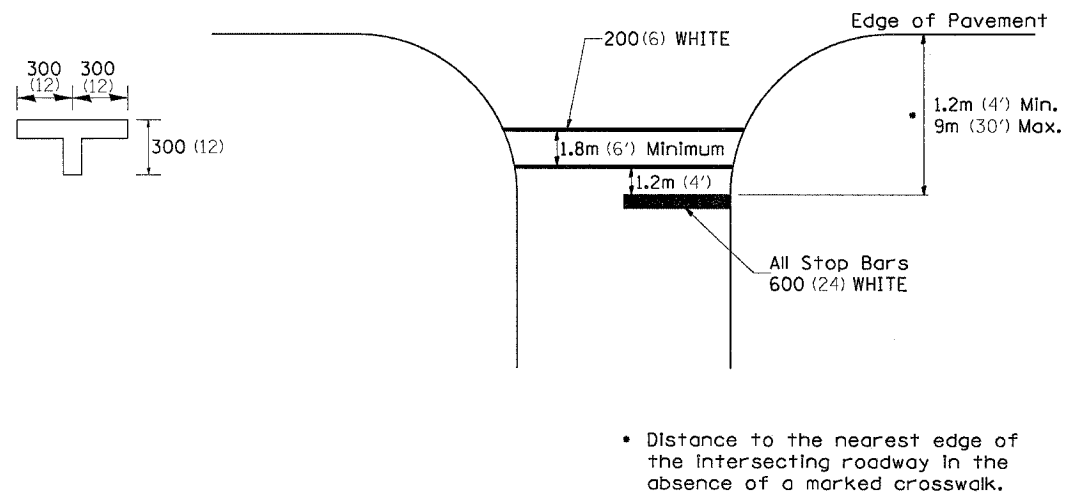


TYPICAL PARKING SPACING



•• ALL DIMENSIONS ARE IN MILLIMETERS (INCHES) UNLESS OTHERWISE NOTED.

STANDARD CROSSWALK MARKING
See Schedules for Locations



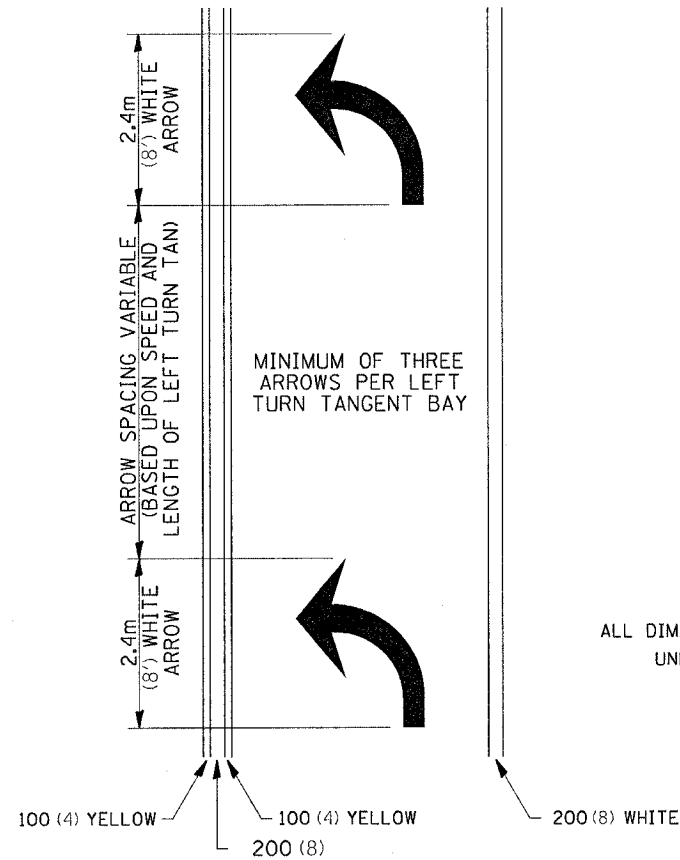
• Distance to the nearest edge of the intersecting roadway in the absence of a marked crosswalk.

PLOT DATE = Wed Mar 21 09:51:01 2007
 PLOT SCALE = 50.00000 / IN.
 REFERENCE = #REF#

| | | | | |
|---------------------|--------------|------------------|--------------|-----------|
| F.A.U. RTE. | SECTION | COUNTY | TOTAL SHEETS | SHEET NO. |
| 5789 | (33&40)-1-FR | ROCK ISLAND | 30 | 27 |
| STA. | TO STA. | | | |
| FED. ROAD DIST. NO. | ILLINOIS | FED. AID PROJECT | | |

TYPICAL PAVEMENT MARKINGS

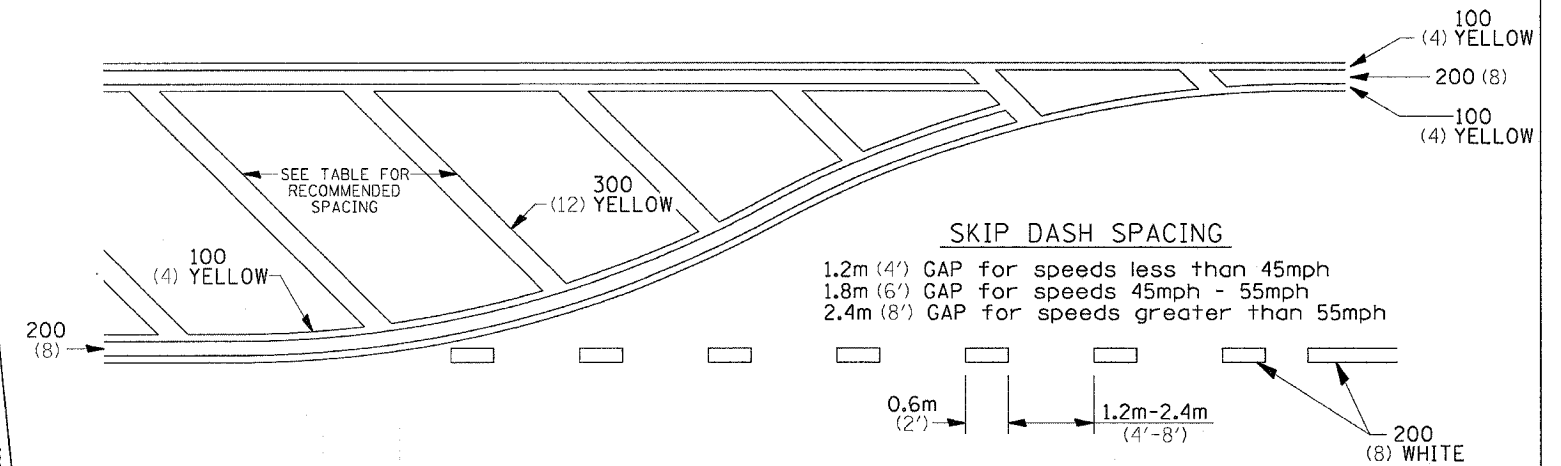
ARROW LAYOUT



12.2m
6 at (40') O.C.
APPROACH SIDE ONLY

See Typical Drawing at right

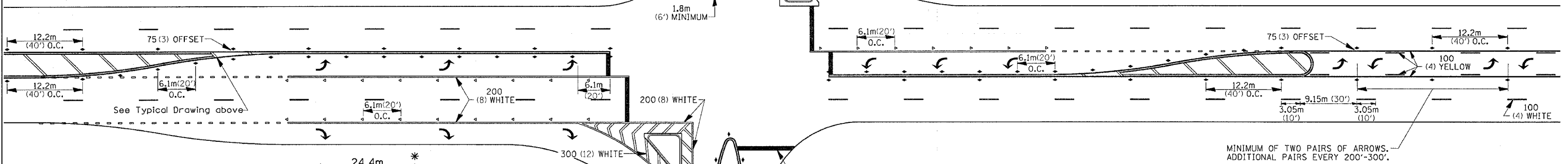
TYPICAL PAVEMENT MARKING FOR FLUSH MEDIAN



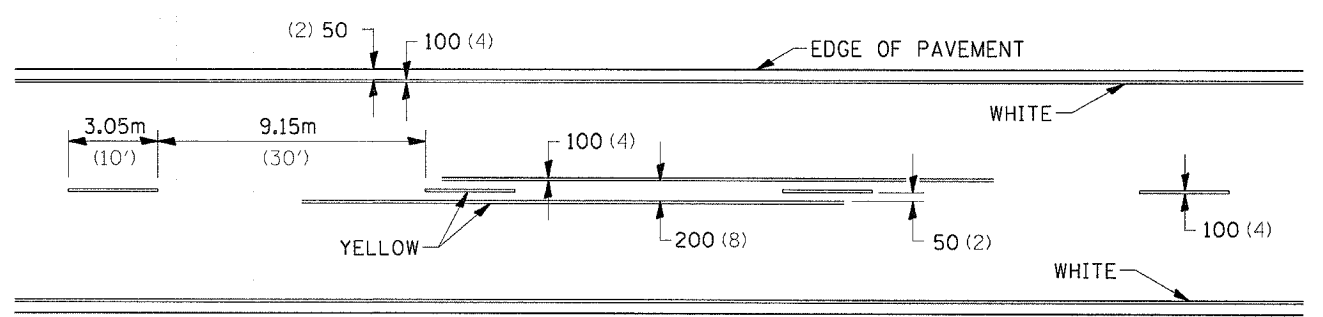
RECOMMENDED SPACING BETWEEN DIAGONALS (IN FEET)

| Speed Limit Range | Continuous Median Area | Intersection Channelization | Objects (Islands) |
|--------------------------|------------------------|-----------------------------|-------------------|
| less than 50Km/H (30MPH) | 15.3m (50') | 4.53m (15') | 3.05m (10') |
| 50-60Km/H (30-40MPH) | 22.9m (75') | 6.1m (20') | 4.53m (15') |
| 70Km/H (45MPH) & over | 22.9m (75') | 9.05m (30') | 6.1m (20') |

NOTE: if the spacing recommended in the Table does not permit at least five diagonal lines in the area being marked, the spacing from the next lowest speed range should be used. The recommended spacing is measured parallel to the pavement center line.



TYPICAL PAVEMENT MARKING FOR TWO LANE SECTION - NO PASSING ZONES



SYMBOLS

See Typical Drawing above

12.2m
6 at (40') O.C.
APPROACH SIDE ONLY

- REDUCE TO 12.2m (40') O.C. ON CURVES WHERE ADVISORY SPEEDS ARE 15Km/H (10MPH) LOWER THAN POSTED SPEEDS.
- USE DOUBLE MARKERS WHEN ADT ≥ 25,000

MULTI-LANE / UNDIVIDED

PLOT DATE = Wed Mar 21 08:51:02 2007
 FILE NAME = s:\projects\64c16\33&40-1-FR\33&40-1-FR.dgn
 PLOT SCALE = 50.00000 / IN.
 REFERENCE = REF

