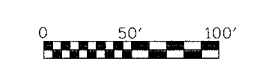
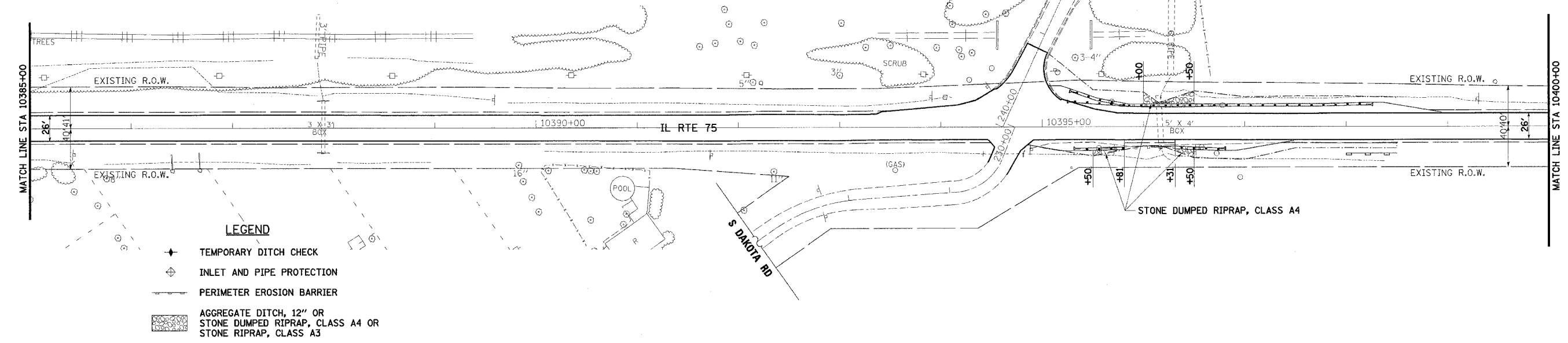


F.A.P. RTE.	SECTION	COUNTY	TOTAL SHEETS	SHEET NO.
505	110RS-1, 111RS-3	STEPHENSON	174	65
STA. 10385+00 TO STA. 10400+00				
FED. ROAD DIST. NO.	ILLINOIS	FED. AID PROJECT		
CONTRACT NO. 64C32				



REGINALD GOEKE



PLAN	SURVEYED	BY	DATE
	NOTED		
	PLOTTED		
	CHECKED		
	BY		
	DATE		

PROFILE	SURVEYED	BY	DATE
	NOTED		
	PLOTTED		
	CHECKED		
	BY		
	DATE		

12/7/2006 9:48:38 AM k:\1195800\1175_3p\cadd\design\erofoslon_3p_16.dgn

REVISIONS		ILLINOIS DEPARTMENT OF TRANSPORTATION	
NAME	DATE	F.A.P. ROUTE 505 (IL 75)	
		ILLINOIS ROUTE 75 PLAN & PROFILE STA 10385+00 TO 10400+00	
SCALE: VERT. 1" = 5'		DRAWN BY JMC	
HORIZ. 1" = 50'		CHECKED BY DWB	
DATE: 12/6/06			