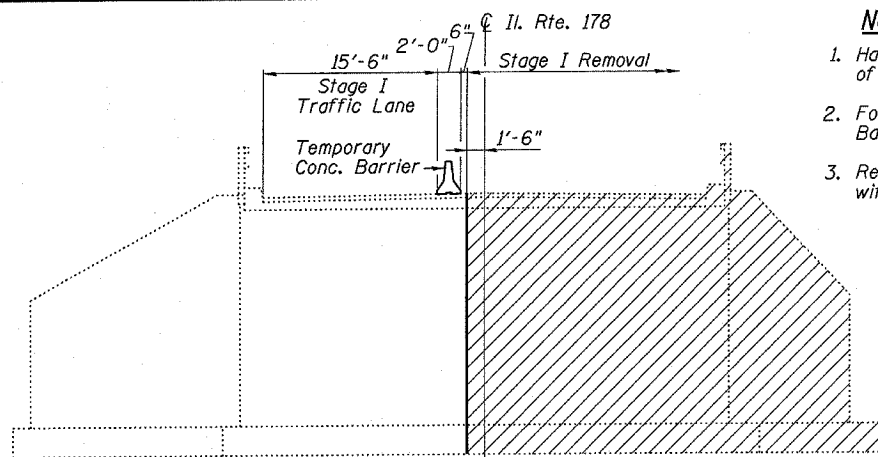
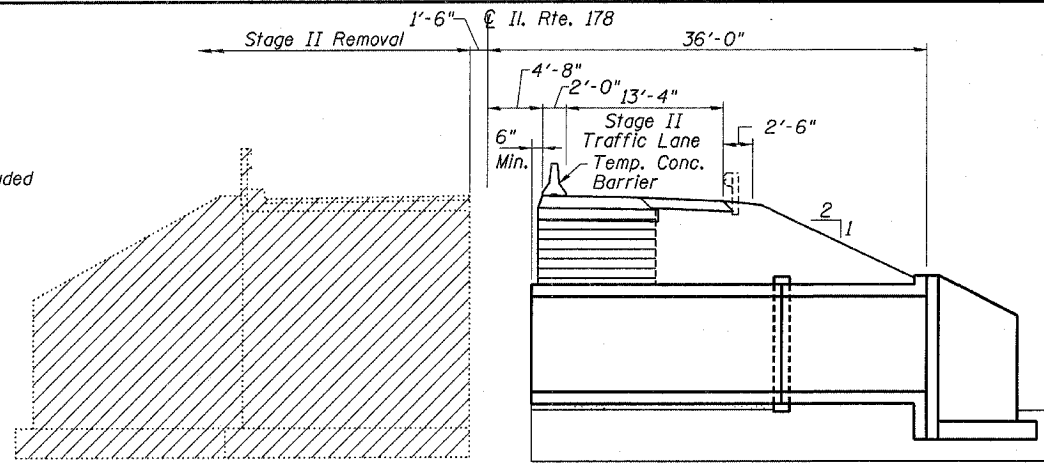


**NOTES**

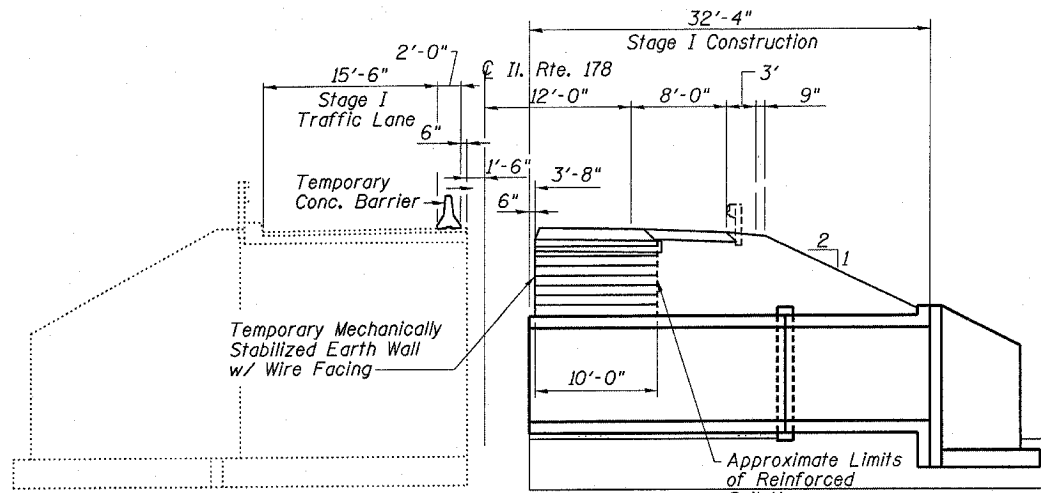
1. Hatched areas indicate "Removal of Existing Structures."
2. For details of Temporary Concrete Barrier see Dwg No. 5 of 5.
3. Removal of existing bridge rail is included with "Removal of Existing Structures."



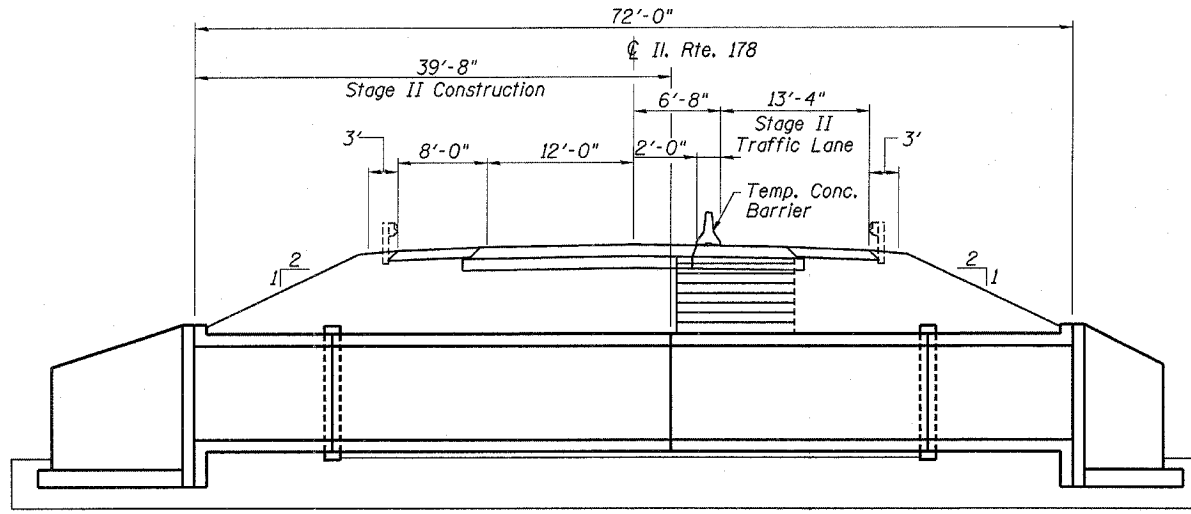
**STAGE I REMOVAL**



**STAGE II REMOVAL**



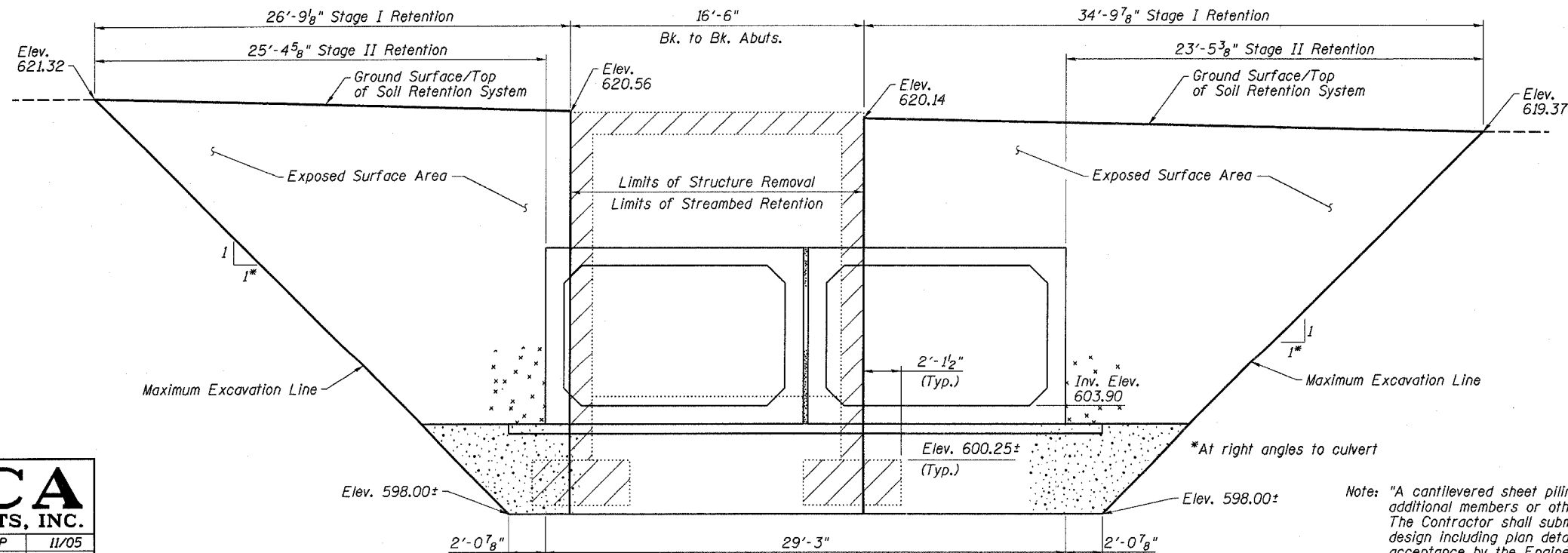
**STAGE I CONSTRUCTION**



**STAGE II CONSTRUCTION**

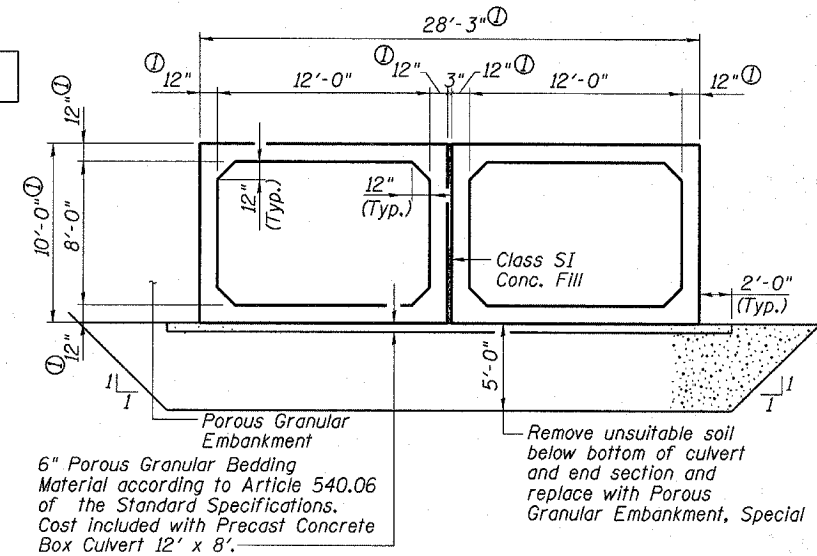
Note: Dimensions shown at right angles to  $\mathcal{C}$  of Il. 178.

**STAGE CONSTRUCTION SECTIONS**  
(Looking South)



**TEMPORARY SOIL RETENTION SYSTEM LIMITS**

Note: Dimensions along  $\mathcal{C}$  of Il. 178.



**SECTION B-B**

① Thickness of Precast Culvert walls and slabs shall be verified on shop drawings and coordinated for final dimension

**ESCA**  
CONSULTANTS, INC.

DESIGNED BY:	RDP	11/05
DRAWN BY:	DWH	11/05
CHECKED BY:	MTD	12/05
APPROVED BY:	RDP	05/06

**STAGE CONSTRUCTION  
DETAILS  
IL ROUTE 178 OVER  
UNNAMED TRIBUTARY  
FAS 1279 SECTION 1071  
LaSALLE COUNTY  
STATION 1120+02.38  
STRUCTURE NO. 050-2040**

Note: "A cantilevered sheet piling design does not appear feasible and additional members or other retention systems may be necessary. The Contractor shall submit a temporary soil retention system design including plan details and calculations for review and acceptance by the Engineer."