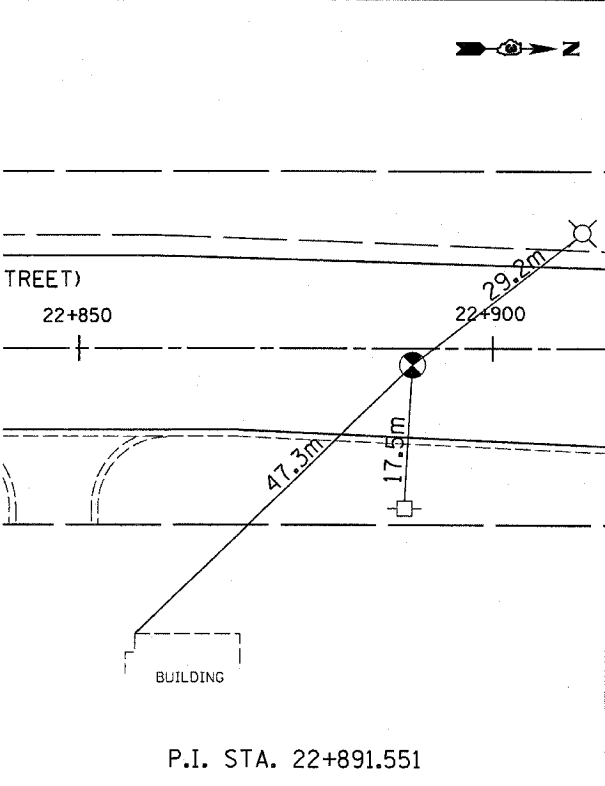
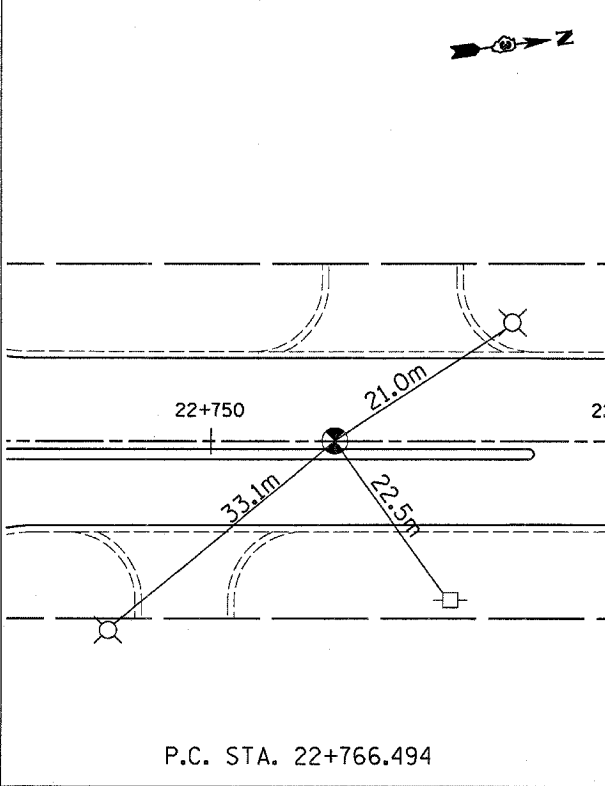
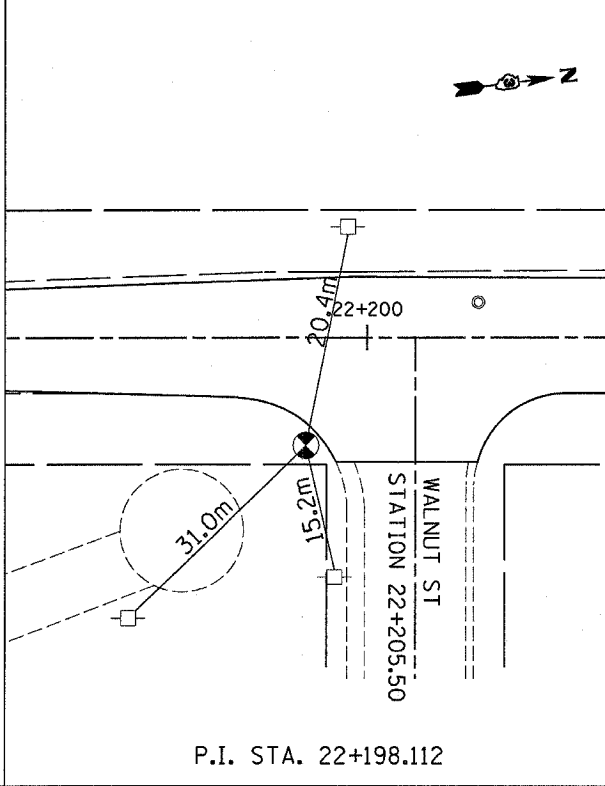
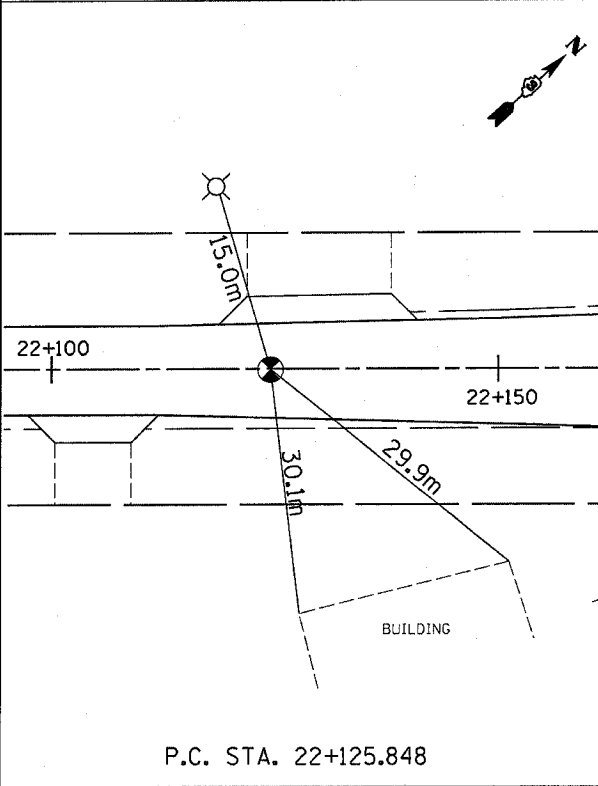
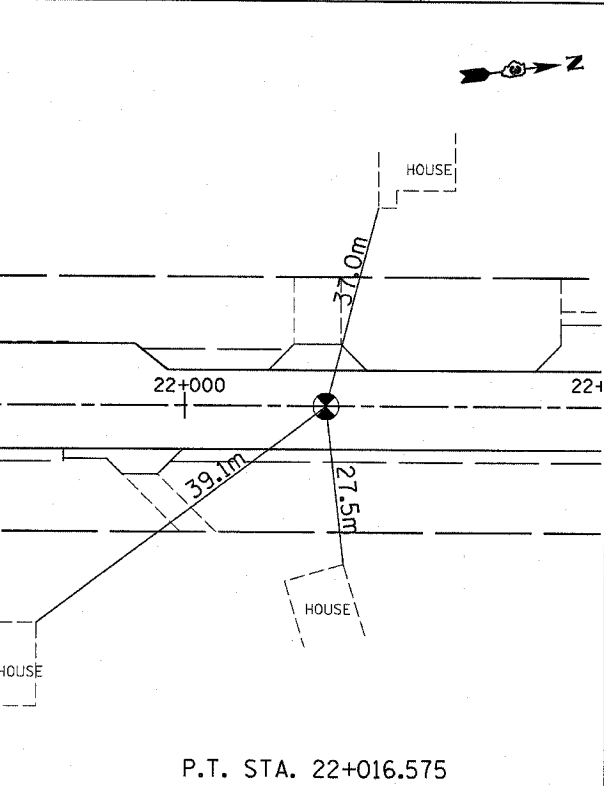
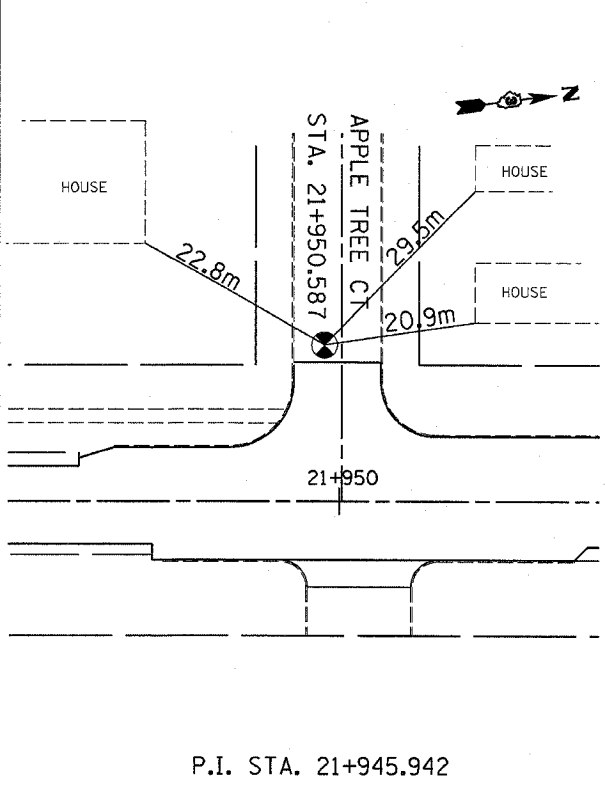
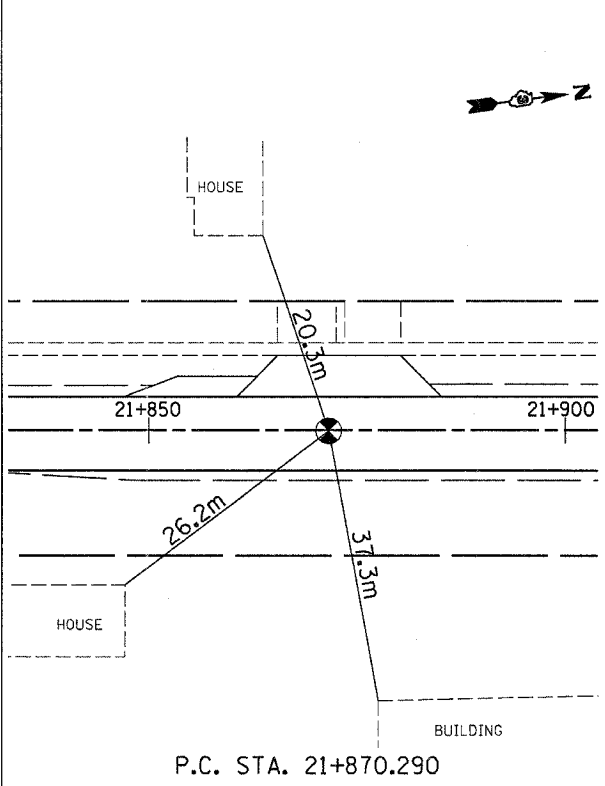
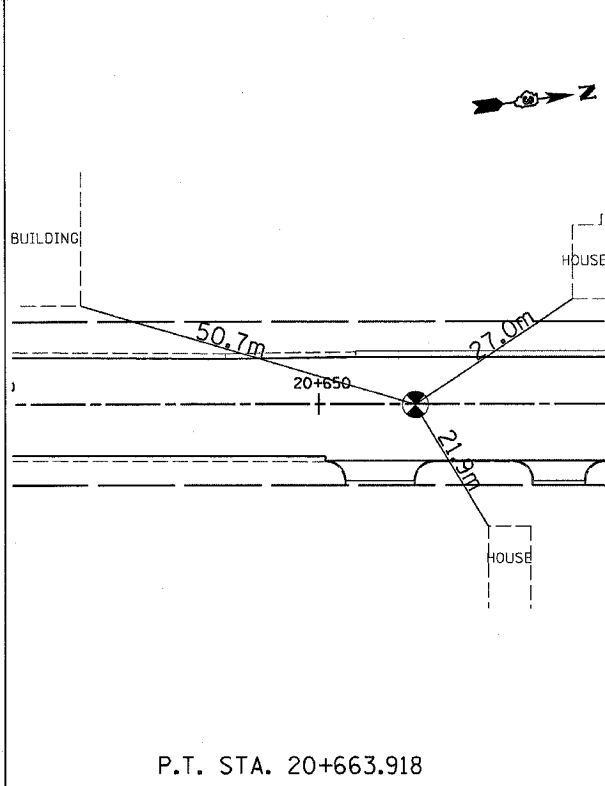
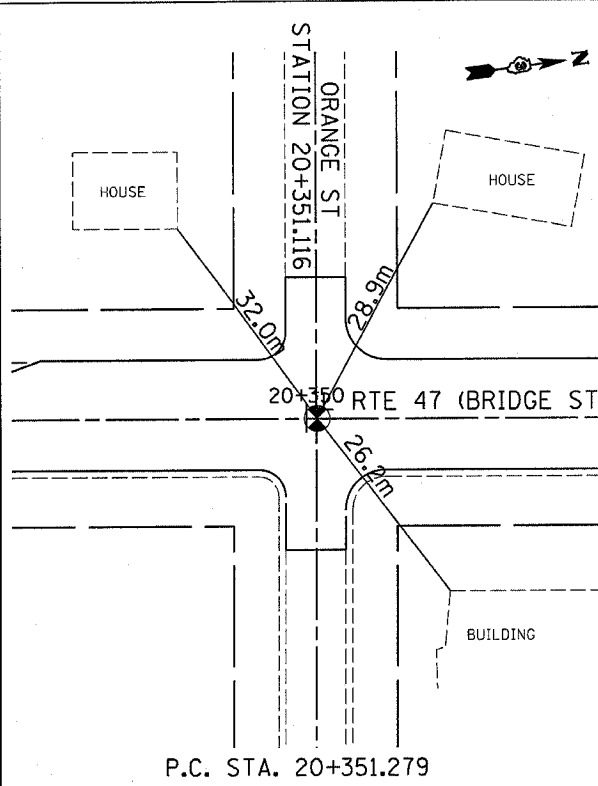


F.A.P. RTE.	SECTION	COUNTY	TOTAL SHEETS	SHEET NO.
326	(108,109)RS4	KENDALL	34	11
STA.		TO STA.		
FED. ROAD DIST. NO.		ILLINOIS FED. AID PROJECT		



NOTE:
THE RESIDENT ENGINEER SHOULD CONTACT THE SURVEY SECTION
IN THE BUREAU OF LAND ACQUISITION TO VERIFY THE NUMBER OF
SURVEY MARKERS TO BE INSTALLED.

REVISIONS	
NAME	DATE

ILLINOIS DEPARTMENT OF TRANSPORTATION
TIE POINTS
SCALE: VERT. HORIZ.
DATE DRAWN BY CHECKED BY