

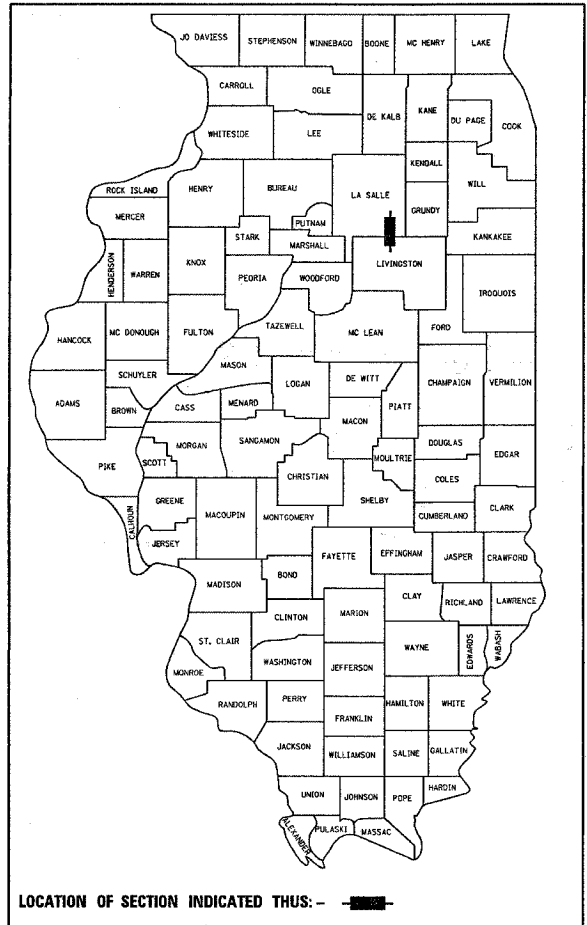
F.A.P. RTE.	SECTION	COUNTY	TOTAL SHEETS	SHEET NO.
786	*	**	20	1

ILLINOIS PROJECT  
 \* (109,110,111)RS-3  
 \*\* LASALLE AND LIVINGSTON  
**D-93-039-04**

**INDEX OF SHEETS**

- 1 COVER SHEET
- 2 GENERAL NOTES
- 3 SUMMARY OF QUANTITIES
- 4 - 9 TYPICAL SECTIONS
- 10 SCHEMATIC
- 11 - 13 SCHEDULE OF QUANTITIES
- 14 - 15 TIE POINTS
- 16 - 20 DETAILS

**STATE OF ILLINOIS**  
**DEPARTMENT OF TRANSPORTATION**  
**DIVISION OF HIGHWAYS**  
**PLANS FOR PROPOSED**  
**FEDERAL AID HIGHWAY**  
**F.A.P. 786 (IL.170)**  
**SECTION (109,110,111) RS-3**



LOCATION OF SECTION INDICATED THIS: - ■ -

**FUNCTIONAL CLASSIFICATION**  
**RURAL MINOR ARTERIAL**

<p><b>FROM IL RIVER BRIDGE TO GRAND RIDGE ROAD</b></p> <p>2001 ADT = 3150</p> <p>P.V. = 89.1%</p> <p>S.U. = 5.8%</p> <p>M.U. = 5.1%</p>	<p><b>FROM GRAND RIDGE ROAD TO IL. 17</b></p> <p>2001 ADT = 1300</p> <p>P.V. = 87.5%</p> <p>S.U. = 5.0%</p> <p>M.U. = 7.5%</p>
---	--

**HIGHWAY STANDARDS**

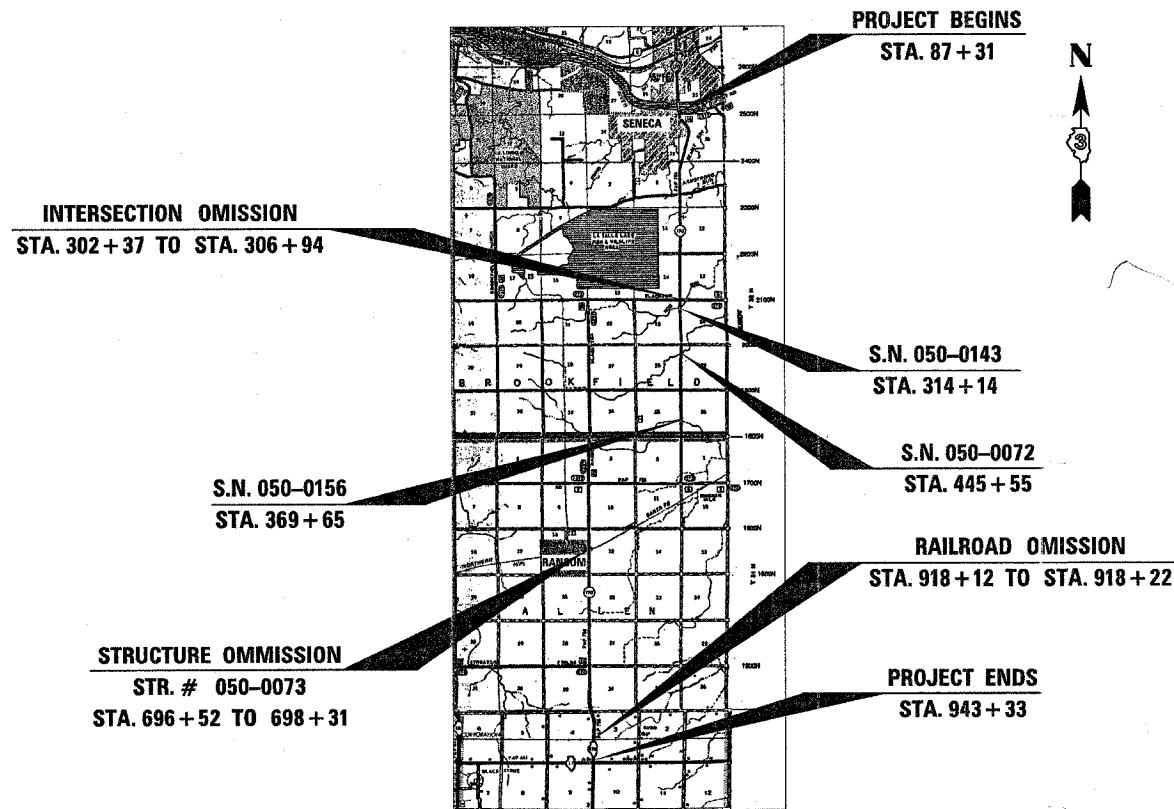
- 000001-04 STANDARD SYMBOLS, ABBREVIATIONS AND PATTERNS
- 001006 DECIMAL OF AN INCH AND OF A FOOT
- 406201 MAILBOX TURNOUT
- 442201-02 CLASS C AND D PATCHES
- 667101 PERMANENT SURVEY MARKERS
- 701201-02 LANE CLOSURE, 2L, 2W, DAY ONLY ON-ROAD TO 24"
- OFF-ROAD FOR SPEEDS ≥ 45 MPH
- 701301-02 LANE CLOSURE, 2L, 2W, SHORT TIME OPERATIONS
- 701306-01 LANE CLOSURE, 2L, 2W, SLOW MOVING OPERATIONS -
- FOR SPEEDS ≥ 45 MPH
- 701311-02 LANE CLOSURE, 2L, 2W, MOVING OPERATIONS - DAY ONLY
- 701326-02 LANE CLOSURE, 2L, 2W, PAVEMENT WIDENING FOR SPEEDS ≥ 45 MPH
- 701336-04 LANE CLOSURE, 2L, 2W, WORK AREAS IN SERIES FOR SPEEDS ≥ 45 MPH
- 702001-06 TRAFFIC CONTROL DEVICES
- 781001-02 TYPICAL APPLICATIONS, RAISED REFLECTIVE PAVEMENT MARKERS

**LASALLE AND LIVINGSTON COUNTY**

C - 93 - 040 - 04

3P RESURFACING ON IL. 170 FROM IL. RIVER

BRIDGE TO IL 17



FULL SIZE PLANS HAVE BEEN PREPARED USING STANDARD ENGINEERING SCALES, REDUCED SIZED PLANS WILL NOT CONFORM TO STANDARD SCALES, IN MAKING MEASUREMENTS ON REDUCED PLANS, THE ABOVE SCALES MAY BE USED.

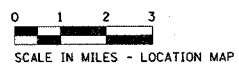
MICROFILMED \_\_\_\_\_  
 REEL NUMBER \_\_\_\_\_  
 AWARDED \_\_\_\_\_  
 RESIDENT ENGINEER \_\_\_\_\_  
 AS BUILT CHANGES WERE MADE  
 ON THE FOLLOWING SHEETS \_\_\_\_\_

JULIE 1-800-892-0123

DISTRICT 3 NO. (815) 434-6131

PROJECT ENGINEER: DAVE BROVIAK  
 UNIT CHIEF: MARK JONES  
 TOWNSHIP: BROOKFIELD, ALLEN

CONTRACT NO. 66439



GROSS LENGTH = 85,602 FT. = 16.21 MI.  
 NET LENGTH = 84,956 FT. = 16.09 MI.

STATE OF ILLINOIS  
 DEPARTMENT OF TRANSPORTATION  
 DIVISION OF HIGHWAYS

SUBMITTED 04/11/07 20 07

*James F. Brown*  
 DEPUTY DIRECTOR OF HIGHWAYS, REGION ENGINEER

*May 11, 20 07*  
*Eric E. Harman*  
 ENGINEER OF DESIGN AND ENVIRONMENT

*May 11, 20 07*  
*Milton R. Sisco, P.E.*  
 DIRECTOR OF HIGHWAYS, CHIEF ENGINEER

PRINTED BY THE AUTHORITY  
 OF THE STATE OF ILLINOIS