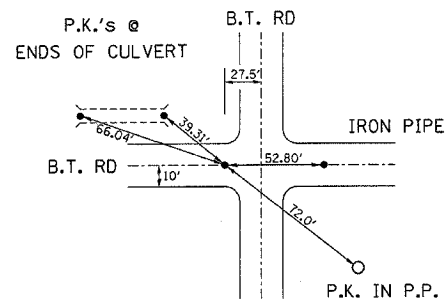


F.A.P. RTE.	SECTION	COUNTY	TOTAL SHEETS	SHEET NO.
786	(109,110,111)RS-3	LASALLE	20	15
STA.		TO STA.		
FED. ROAD DIST. NO.	ILLINOIS	FED. AID PROJECT		

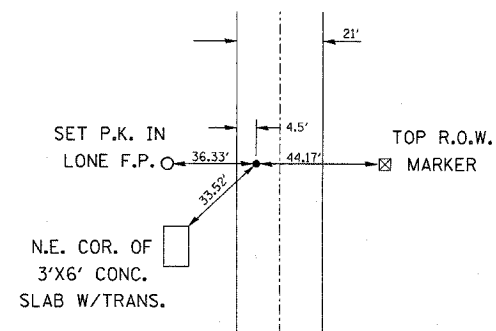


P.K. Nail is ± 27.5' W. of  $\phi$  IL 170

N.E. CORNER SECTION 2  
T. 31 N., R. 5 E.  
3rd P.M., LASALLE COUNTY

PERMANENT SURVEY MARKER TYPE 1 - 1 EACH

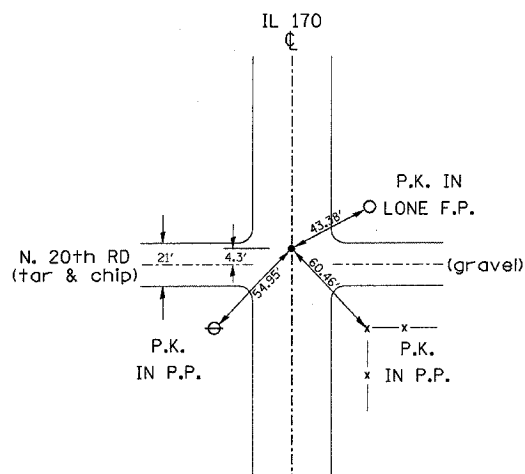
# ALLEN TOWNSHIP



Brass Disk ± 4.5' W. of  $\phi$  IL 170

W. 1/4 CORNER SECTION 24  
T. 32 N., R. 5 E.  
3rd P.M., LASALLE COUNTY

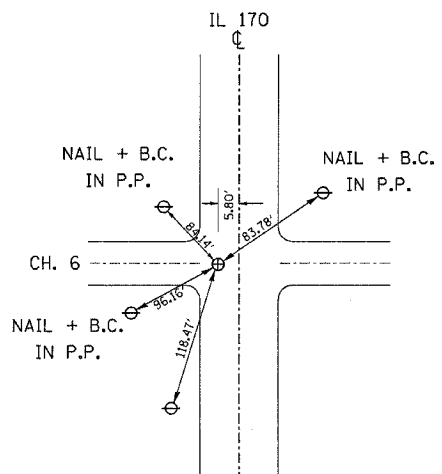
REPLACE WITH SURVEY SPIKE



P.K. Nail ±  $\phi$  IL 170

S.W. CORNER SECTION 24  
T. 32 N., R. 5 E.  
3rd P.M., LASALLE COUNTY

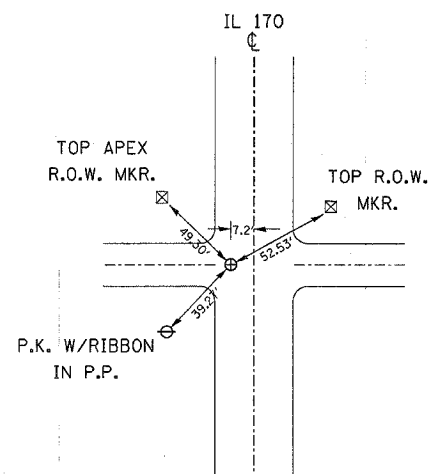
REPLACE WITH PK NAIL



Brass Disk ± 5.80' W. of  $\phi$  IL 170

S.W. CORNER SECTION 13  
T. 32 N., R. 5 E.  
3rd P.M., LASALLE COUNTY

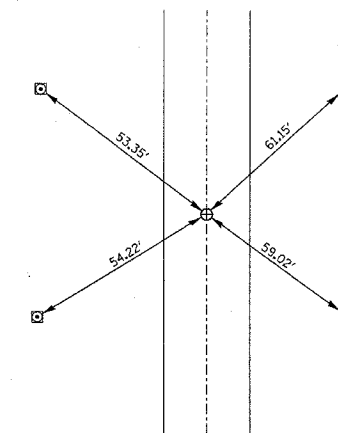
REPLACE WITH SURVEY SPIKE



Brass Disk ± 7.2' W. of  $\phi$  IL 170

S.E. CORNER SECTION 11  
T. 32 N., R. 5 E.  
3rd P.M., LASALLE COUNTY

PERMANENT SURVEY MARKER TYPE 1 - 1 EACH



Brass Disk on  $\phi$  IL 170

N.W. CORNER SECTION 12  
T. 32 N., R. 5 E.  
3rd P.M., LASALLE COUNTY

PERMANENT SURVEY MARKER TYPE 1 - 1 EACH

# BROOKFIELD TOWNSHIP

REVISIONS	
NAME	DATE

ILLINOIS DEPARTMENT OF TRANSPORTATION

## TIE POINTS

SCALE: VERT. HORIZ. DATE

DRAWN BY CHECKED BY

4/14/2007 2:00:19:00 AM c:\000059664\0165025804\02847115.dgn