

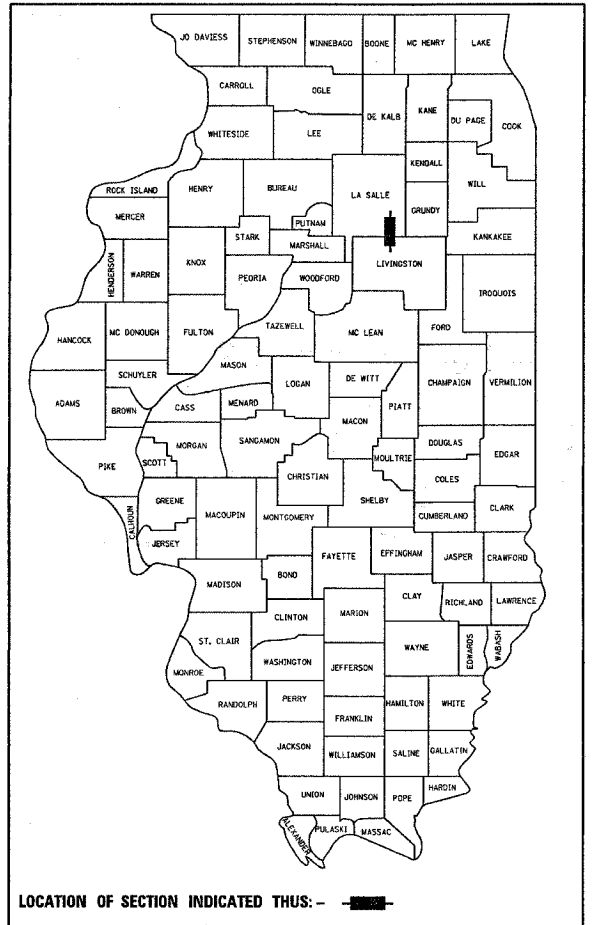
F.A.P. RTE.	SECTION	COUNTY	TOTAL SHEETS	SHEET NO.
786	*	**	20	1
ILLINOIS PROJECT				

*(109,110,111)RS-3
 ** LASALLE AND LIVINGSTON
D-93-039-04

INDEX OF SHEETS

- 1 COVER SHEET
- 2 GENERAL NOTES
- 3 SUMMARY OF QUANTITIES
- 4 - 9 TYPICAL SECTIONS
- 10 SCHEMATIC
- 11 - 13 SCHEDULE OF QUANTITIES
- 14 - 15 TIE POINTS
- 16 - 20 DETAILS

STATE OF ILLINOIS
DEPARTMENT OF TRANSPORTATION
DIVISION OF HIGHWAYS
PLANS FOR PROPOSED
FEDERAL AID HIGHWAY
F.A.P. 786 (IL.170)
SECTION (109,110,111) RS-3



LOCATION OF SECTION INDICATED THIS: - [shaded area]

FUNCTIONAL CLASSIFICATION
RURAL MINOR ARTERIAL

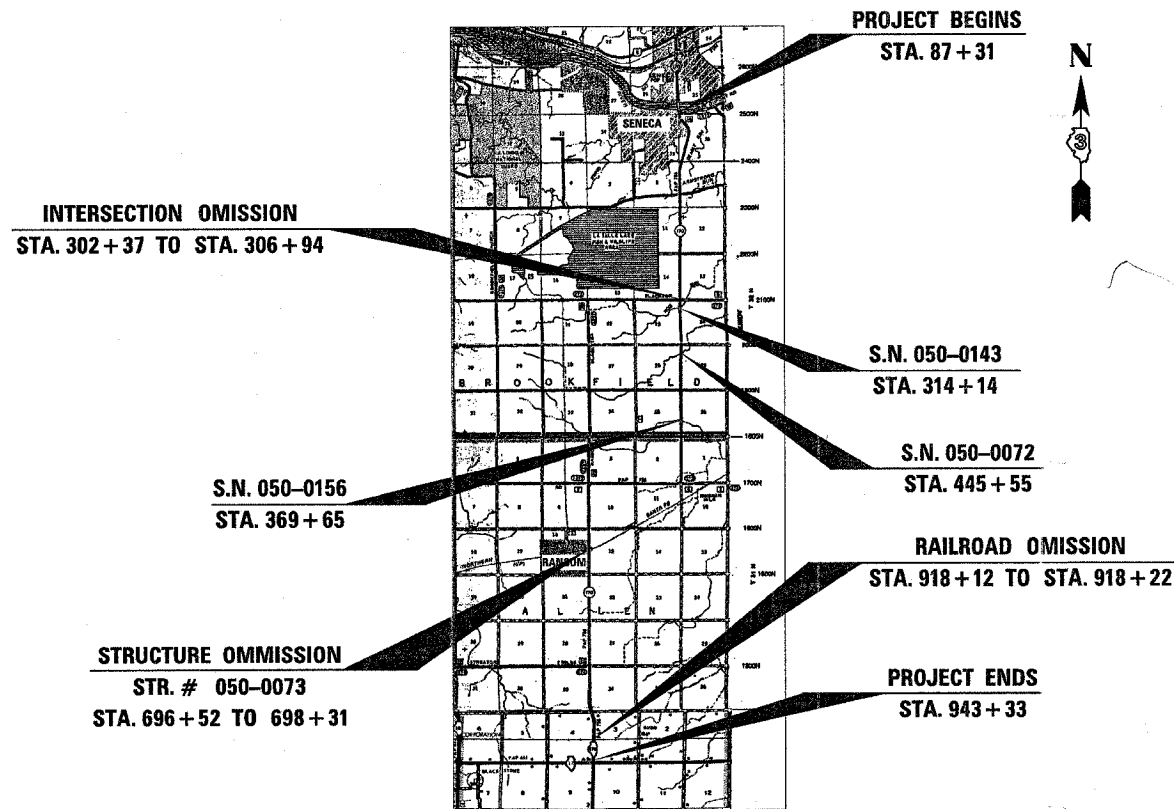
FROM IL RIVER BRIDGE TO GRAND RIDGE ROAD	FROM GRAND RIDGE ROAD TO IL. 17
2001 ADT = 3150	2001 ADT = 1300
P.V. = 89.1%	P.V. = 87.5%
S.U. = 5.8%	S.U. = 5.0%
M.U. = 5.1%	M.U. = 7.5%

LASALLE AND LIVINGSTON COUNTY

C - 93 - 040 - 04

3P RESURFACING ON IL. 170 FROM IL. RIVER

BRIDGE TO IL 17



GROSS LENGTH = 85,602 FT. = 16.21 MI.
 NET LENGTH = 84,956 FT. = 16.09 MI.

HIGHWAY STANDARDS

- 000001-04 STANDARD SYMBOLS, ABBREVIATIONS AND PATTERNS
- 001006 DECIMAL OF AN INCH AND OF A FOOT
- 406201 MAILBOX TURNOUT
- 442201-02 CLASS C AND D PATCHES
- 667101 PERMANENT SURVEY MARKERS
- 701201-02 LANE CLOSURE, 2L, 2W, DAY ONLY ON-ROAD TO 24"
- OFF-ROAD FOR SPEEDS ≥ 45 MPH
- 701301-02 LANE CLOSURE, 2L, 2W, SHORT TIME OPERATIONS
- 701306-01 LANE CLOSURE, 2L, 2W, SLOW MOVING OPERATIONS -
- FOR SPEEDS ≥ 45 MPH
- 701311-02 LANE CLOSURE, 2L, 2W, MOVING OPERATIONS - DAY ONLY
- 701326-02 LANE CLOSURE, 2L, 2W, PAVEMENT WIDENING FOR SPEEDS ≥ 45 MPH
- 701336-04 LANE CLOSURE, 2L, 2W, WORK AREAS IN SERIES FOR SPEEDS ≥ 45 MPH
- 702001-06 TRAFFIC CONTROL DEVICES
- 781001-02 TYPICAL APPLICATIONS, RAISED REFLECTIVE PAVEMENT MARKERS

FULL SIZE PLANS HAVE BEEN PREPARED USING STANDARD ENGINEERING SCALES, REDUCED SIZED PLANS WILL NOT CONFORM TO STANDARD SCALES, IN MAKING MEASUREMENTS ON REDUCED PLANS, THE ABOVE SCALES MAY BE USED.

MICROFILMED _____
 REEL NUMBER _____
 AWARDED _____
 RESIDENT ENGINEER _____
 AS BUILT CHANGES WERE MADE
 ON THE FOLLOWING SHEETS _____

JULIE 1-800-892-0123

DISTRICT 3 NO. (815) 434-6131

PROJECT ENGINEER: DAVE BROVIAK
 UNIT CHIEF: MARK JONES
 TOWNSHIP: BROOKFIELD, ALLEN

CONTRACT NO. 66439

STATE OF ILLINOIS
 DEPARTMENT OF TRANSPORTATION
 DIVISION OF HIGHWAYS

SUBMITTED 04/11/07 20 07
James F. Brown
 DEPUTY DIRECTOR OF HIGHWAYS, REGION ENGINEER
 May 11, 20 07
Eric E. Harman
 ENGINEER OF DESIGN AND ENVIRONMENT
 May 11, 20 07
Milton R. Sear
 DIRECTOR OF HIGHWAYS, CHIEF ENGINEER

PRINTED BY THE AUTHORITY
 OF THE STATE OF ILLINOIS

F.A.P. RTE.	SECTION	COUNTY	TOTAL SHEETS	SHEET NO.
786	1109,110,111RS-3	LASALLE	20	2
STA.		TO STA.		
FED. ROAD DIST. NO.		ILLINOIS	FED. AID PROJECT	

GENERAL NOTES

THE THICKNESS OF HMA SHOWN ON THE PLANS IS THE NOMINAL THICKNESS. DEVIATIONS FROM THE NOMINAL THICKNESS WILL BE PERMITTED WHEN SUCH DEVIATIONS OCCUR DUE TO IRREGULARITIES IN THE EXISTING SURFACE OR BASE ON WHICH THE HMA IS PLACED.

THE HMA SURFACE OF ALL MAILBOX TURNOUTS, PRIVATE ENTRANCES, COMMERCIAL ENTRANCES, AND SIDE ROADS SHALL BE MADE NEATLY, IN A WORKMANLIKE MANNER, AND SHALL ACCURATELY CONFORM TO THE SHAPES AND DIMENSIONS SHOWN ON THE PLAN DETAILS. IF REQUIRED BY THE ENGINEER, THE CONTRACTOR SHALL BE REQUIRED TO SAW CUT THE HMA SURFACE TO CONFORM TO THE SHAPES AND DIMENSIONS SHOWN ON THE PLAN DETAILS. THIS WORK SHALL BE INCLUDED IN THE COST OF THE HMA SURFACE

THE ENGINEER WILL BE THE SOLE JUDGE CONCERNING CURING TIME FOR THE VARIOUS HMA LIFTS.

FOR STABILIZATION, ALL TYPE III BARRICADES SHALL REQUIRE A MINIMUM OF FOUR SAND BAGS PER BARRICADE.

SEEDING SHALL NOT BE PERMITTED AT ANY TIME WHEN THE GROUND IS FROZEN, WET, OR IN AN UNTILLABLE CONDITION. LOCATIONS TO BE SEEDED WILL BE DETERMINED BY THE ENGINEER.

THE FINISHED EARTHWORK SHALL HAVE A VEGETATION SUSTAINING SOIL COVERING THE TOP FOUR INCHES IN AREAS TO BE SEEDED OR SODDED. THE VEGETATION SUSTAINING SOIL REQUIRED WILL NOT BE PAID FOR SEPARATELY BUT SHALL BE INCLUDED IN THE COST OF FURNISHED EXCAVATION.

ON EXISTING PAVEMENT WHICH MAY BE SUPERELEVATED, THE NEW HMA PAVEMENT SHALL BE BUILT WITH THE SAME SUPERELEVATION UNLESS NEW SUPERELEVATION RATES ARE GIVEN ON THE PLANS.

ALL ELEVATIONS REFERRING TO U.S.G.S. MEAN SEA LEVEL DATUM.

ADDITIONAL LEVELING BINDER, AT THE RATE GIVEN ON THE TYPICAL SECTIONS, HAS BEEN ADDED TO THE QUANTITIES TO CORRECT TO A 3/16" / FT. CROWN ON SECTIONS OF EXISTING ROADWAYS.

ABANDONED UNDERGROUND UTILITIES THAT CONFLICT WITH CONSTRUCTION SHALL BE DISPOSED OF OUTSIDE THE LIMITS OF THE RIGHT OF WAY ACCORDING TO ARTICLE 202.03 OF THE STANDARD SPECIFICATIONS AND AS DIRECTED BY THE ENGINEER. THIS WORK WILL NOT BE PAID FOR SEPARATELY, BUT SHALL BE INCLUDED IN THE COST OF FURNISHED EXCAVATION.

ANY REFERENCE TO A STANDARD IN THESE PLANS SHALL BE INTERPRETED TO MEAN THE EDITION AS INDICATED BY THE SUBNUMBER SHOWN IN THE LIST OF STANDARDS INCLUDED IN THESE PLANS.

THE FOLLOWING RATES OF APPLICATION HAVE BEEN USED IN CALCULATING PLAN QUANTITIES:

GRANULAR MATERIALS	2.05	TONS / CU YD
BITUMINOUS MAT PRIME COAT	0.08	GAL / SQ YD OR
	0.375	GAL / SQ YD
AGGREGATE PRIME COAT	0.002	TONS / SQ YD
HMA RESURFACING	112	LBS / SQ YD / IN
SHORT TERM PAVEMENT MARKING	10	FT / 100 FT OF APPLICATION
MIX FOR CRACKS, JTS & FLGWYS	0.0003	TONS / SQ YD
LEVEL BINDER (HAND METHOD)	0.0005	TONS / SQ YD
SUPPLEMENTAL WATERING	3	GAL / SQ YD / APPLICATION
CALCIUM CHLORIDE	2	LB / SQ YD / APPLICATION
TEMPORARY	5	TONS AGGREGATE

MEMBERS OF JULIE KNOWN TO BE WITHIN THE LIMITS OF THE IMPROVEMENT ARE:

NORCO PIPELINE	SBC
BP PIPELINE	NICOR GAS COMPANY
GRANDRIDGE CABLE	VILLAGE OF RANSOM
GARDNER/SENECA CABLE TV	VILLAGE OF SENECA
CORNELL-RANSOM TELEPHONE	COMMONWEALTH EDISON

STATE OF ILLINOIS
DEPARTMENT OF TRANSPORTATION
DISTRICT THREE

PREPARED BY: Rick Powell
DISTRICT STUDIES & PLANS ENGINEER

DATE: 4.13.07

EXAMINED BY: Herb Jung
DISTRICT CONSTRUCTION ENGINEER

Jim R. Jett III
DISTRICT MATERIALS ENGINEER

Bruce A. Huska
DISTRICT OPERATIONS ENGINEER

REVISIONS	
NAME	DATE

ILLINOIS DEPARTMENT OF TRANSPORTATION

GENERAL NOTES

F.A.P. RTE.	SECTION	COUNTY	TOTAL SHEETS	SHEET NO.
786	(109,110,111)RS-3	LASALLE	20	3
STA.		TO STA.		
FED. ROAD DIST. NO.	ILLINOIS	FED. AID PROJECT		

SUMMARY OF QUANTITIES

CODE NO.	ITEM	UNIT	CONSTRUCTION CODE:			
			100% STATE TOTAL QUANTITY	LASALLE COUNTY	LIVINGSTON COUNTY	LASALLE STRUCTURES
				I000	I000	SFTY-2A
20400800	FURNISHED EXCAVATION	CU YD	114	103	11	
40200800	AGGREGATE SURFACE COURSE, TYPE B	TON	142	132	10	
40600100	BITUMINOUS MATERIALS (PRIME COAT)	GALLON	40,382	37,629	2,753	
40600300	AGGREGATE (PRIME COAT)	TON	1,009	940	69	
40600400	MIXTURE FOR CRACKS, JOINTS, AND FLANGEWAYS	TON	75	70	5	
40600525	LEVELING BINDER (HAND METHOD), N50	TON	125	117	8	
40600625	LEVELING BINDER (MACHINE METHOD), N50	TON	12,189	11,365	824	
40600895	CONSTRUCTING TEST STRIP	EACH	1	1		
40600982	HOT-MIX ASPHALT SURFACE REMOVAL - BUTT JOINT	SQ YD	2,567	2,047	520	
40600990	TEMPORARY RAMP	SQ YD	469	434	35	
40603310	HOT-MIX ASPHALT SURFACE COURSE, MIX "C", N50	TON	21,040	19,600	1,413	27
40800050	INCIDENTAL HOT-MIX ASPHALT SURFACING	TON	852	767	85	
44000155	HOT-MIX ASPHALT SURFACE REMOVAL 1 1/2"	SQ YD	12,665	12,341	4	320
44201815	CLASS D PATCHES, TYPE II, 14 INCH	SQ YD	480	445	35	
48101200	AGGREGATE SHOULDERS, TYPE B	TON	4,984	4,632	352	
48203020	HOT-MIX ASPHALT SHOULDERS 5 3/4"	SQ YD	26,855	24,267	2,588	
66700205	PERMANENT SURVEY MARKERS, TYPE I	EACH	4	4		
67000400	ENGINEER'S FIELD OFFICE, TYPE A	CAL MO	4	3	1	
67100100	MOBILIZATION	L SUM	1	0.9	0.1	
70100460	TRAFFIC CONTROL AND PROTECTION, STANDARD 701306	L SUM	1	0.9	0.1	
70100500	TRAFFIC CONTROL AND PROTECTION, STANDARD 701326	L SUM	1	1		
70100600	TRAFFIC CONTROL AND PROTECTION, STANDARD 701336	L SUM	1	1		
70103815	TRAFFIC CONTROL SURVEILLANCE	CAL DAY	11	11		
70300100	SHORT-TERM PAVEMENT MARKING	FOOT	19,592	18,427	1,165	
70300210	TEMPORARY PAVEMENT MARKING - LETTERS AND SYMBOLS	SQ FT	122.4		122.4	
70300220	TEMPORARY PAVEMENT MARKING - LINE 4"	FOOT	200,435	185,674	16,761	
70300240	TEMPORARY PAVEMENT MARKING - LINE 6"	FOOT	19,670	18,482	1,188	
70300280	TEMPORARY PAVEMENT MARKING - LINE 24"	FOOT	167	23	144	
70301000	WORK ZONE PAVEMENT MARKING REMOVAL	SQ FT	2,946	2,754	192	
* 78000100	THERMOPLASTIC PAVEMENT MARKING - LETTERS AND SYMBOLS	SQ FT	122.4		122.4	
* 78000200	THERMOPLASTIC PAVEMENT MARKING - LINE 4"	FT	2,132	2,132		
* 78000400	THERMOPLASTIC PAVEMENT MARKING - LINE 6"	FT	267	267		
* 78000650	THERMOPLASTIC PAVEMENT MARKING - LINE 24"	FOOT	144		144	
* 78001110	PAINT PAVEMENT MARKING - LINE 4"	FOOT	200,303	183,542	16,761	
* 78001130	PAINT PAVEMENT MARKING - LINE 6"	FOOT	19,403	18,215	1,188	
* 78001180	PAINT PAVEMENT MARKING - LINE 24"	FOOT	23	23		
* 78100100	RAISED REFLECTIVE PAVEMENT MARKER	EACH	1,064	993	71	
78300200	RAISED REFLECTIVE PAVEMENT MARKER REMOVAL	EACH	1,064	993	71	
Z0048665	RAILROAD PROTECTIVE LIABILITY INSURANCE	L SUM	1		1	

* SPECIALTY ITEM

REVISIONS	
NAME	DATE

ILLINOIS DEPARTMENT OF TRANSPORTATION

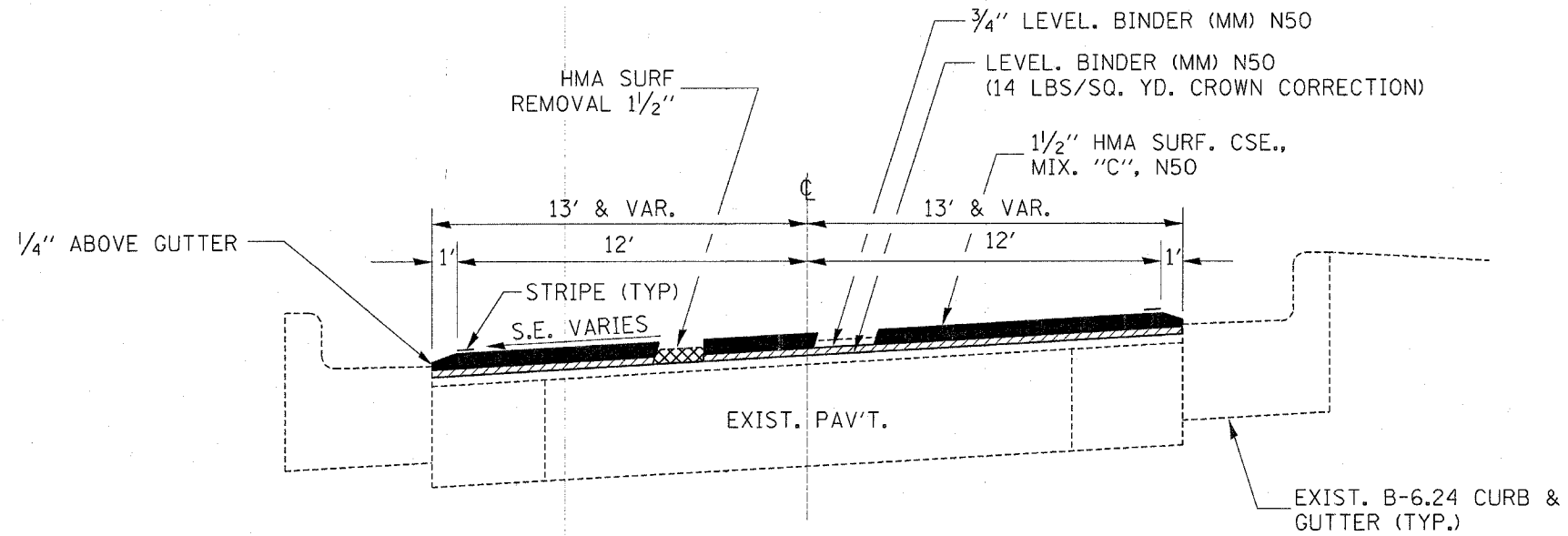
SUMMARY OF QUANTITIES

SCALE: VERT. _____
 HORIZ. _____

DATE _____ DRAWN BY _____
 CHECKED BY _____

4/13/2007 10:38:17 AM c:\p\proj\sect\ed03904\Schedu\es.dgn

F.A.P. RTE.	SECTION	COUNTY	TOTAL SHEETS	SHEET NO.
786	(109,110,111)RS-3	LASALLE	20	4
STA.		TO STA.		
FED. ROAD DIST. NO.	ILLINOIS	FED. AID PROJECT		

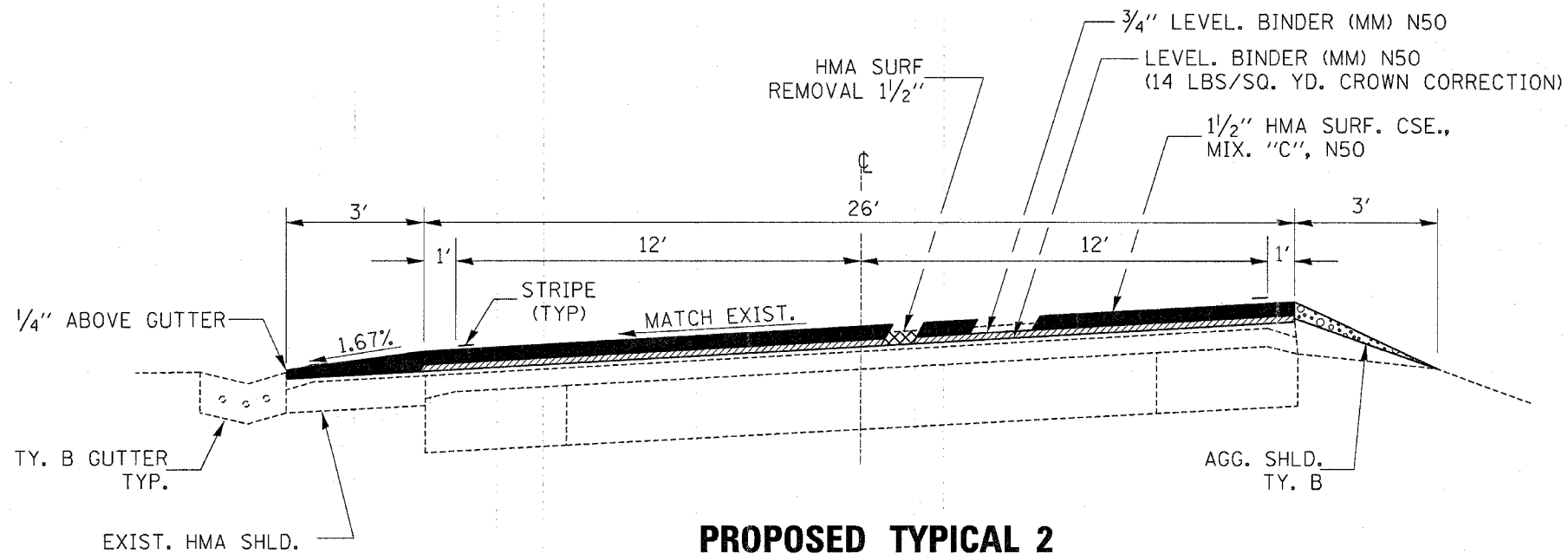


PROPOSED TYPICAL 1

STA. 87+31 TO STA. 89+11

MIX	AC/PG GRADE	MAXIMUM % RAP *	DESIGN AIR VOIDS	MIXTURE COMPOSITION	PLANT CONTROL LIMITS	FRICTION AGGREGATE	DENSITY CONTROL METHOD
HMA SURFACE COURSE	PG64-22	15%	4.0% @ N50	IL 12.5 or IL 9.5	CLASS I	MIXTURE C	CORRELATION
HMA LEVEL BINDER	PG64-22	25%	4.0% @ N50	IL 9.5	CLASS I		
SUPERPAVE BINDER-PATCHING	PG64-22	25%	4.0% @ N50	IL 19.0	CLASS I		CORES
HMA SHOULDERS	PG64-22	25%	2.0% @ N30	BAM	NON-CLASS I		% GROWTH CURVE

* IF RAP OPTION IS SELECTED, THE ASPHALT CEMENT GRADE MAY NEED TO BE ADJUSTED. THIS WILL BE DETERMINED BY THE ENGINEER.



PROPOSED TYPICAL 2

STA. 89+11 TO STA. 96+35

REVISIONS	
NAME	DATE

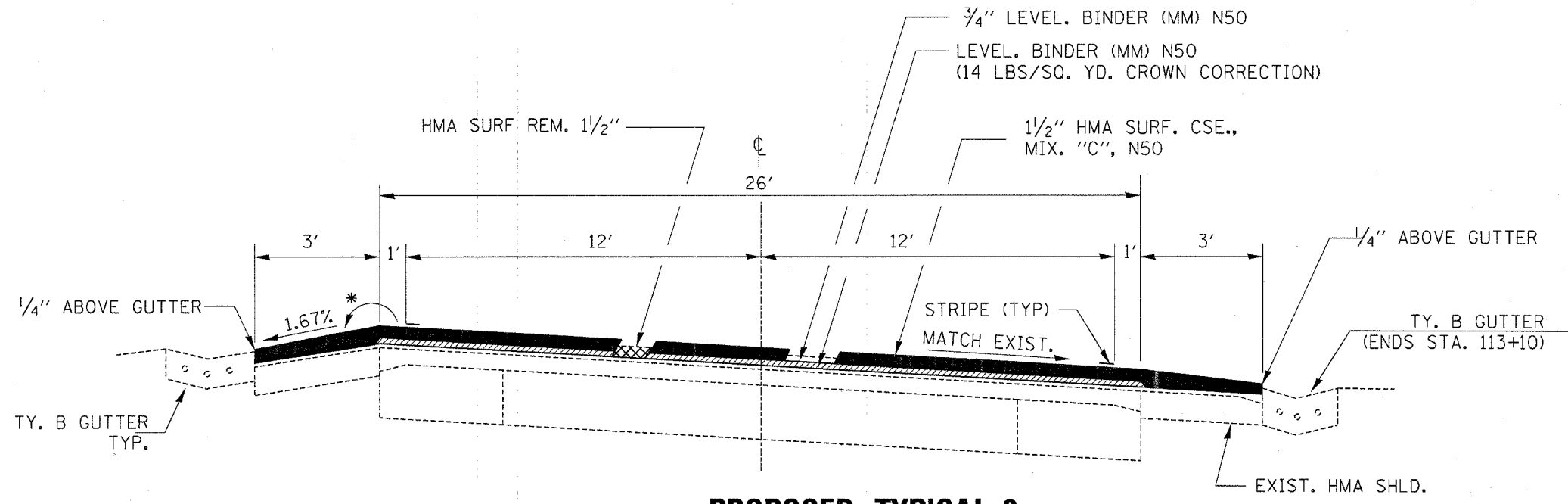
ILLINOIS DEPARTMENT OF TRANSPORTATION

PROPOSED TYPICALS

SCALE: VERT. DATE
HORIZ.

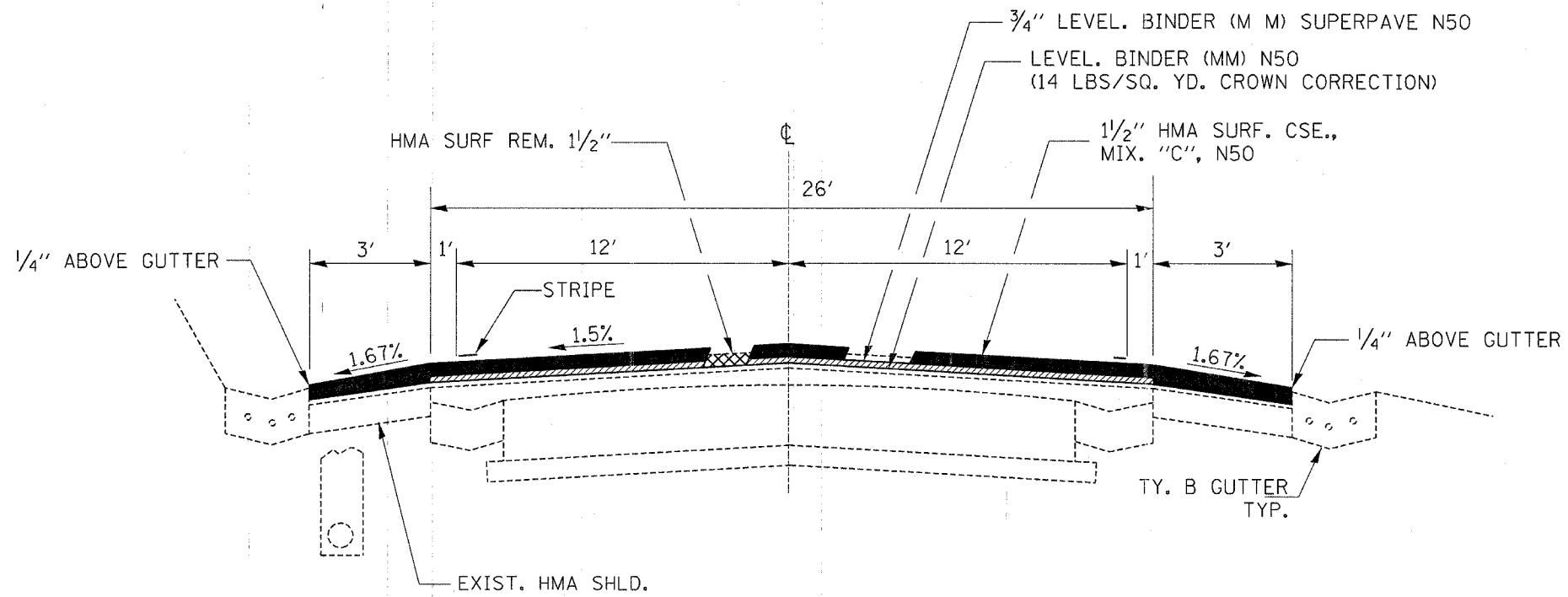
DRAWN BY
CHECKED BY

F.A.P. RTE.	SECTION	COUNTY	TOTAL SHEETS	SHEET NO.
786	(109,110,111)RS-3	LASALLE	20	5
STA.		TO STA.		
FED. ROAD DIST. NO.		ILLINOIS FED. AID PROJECT		



PROPOSED TYPICAL 3

*8% MAX. ROLLOVER
 STA. 96+35 TO STA. 97+42.38
 STA. 99+24.07 TO STA. 114+03



PROPOSED TYPICAL 4

STA. 97+42.38 TO STA. 99+24.07

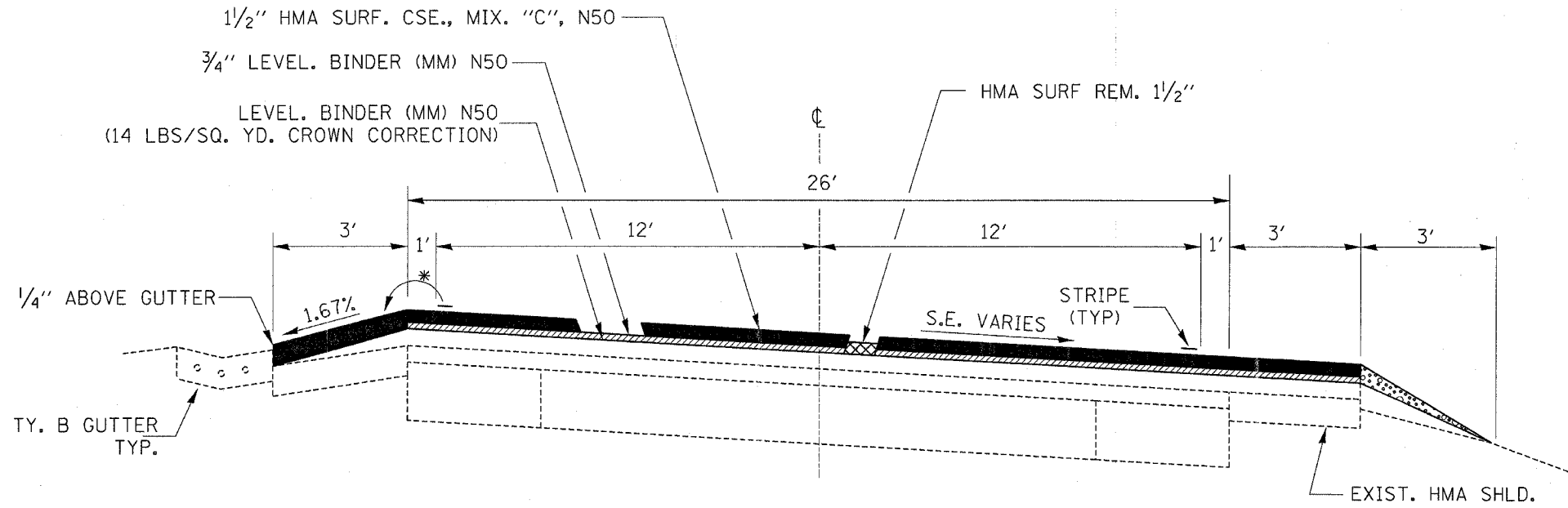
REVISIONS	
NAME	DATE

ILLINOIS DEPARTMENT OF TRANSPORTATION

PROPOSED TYPICALS

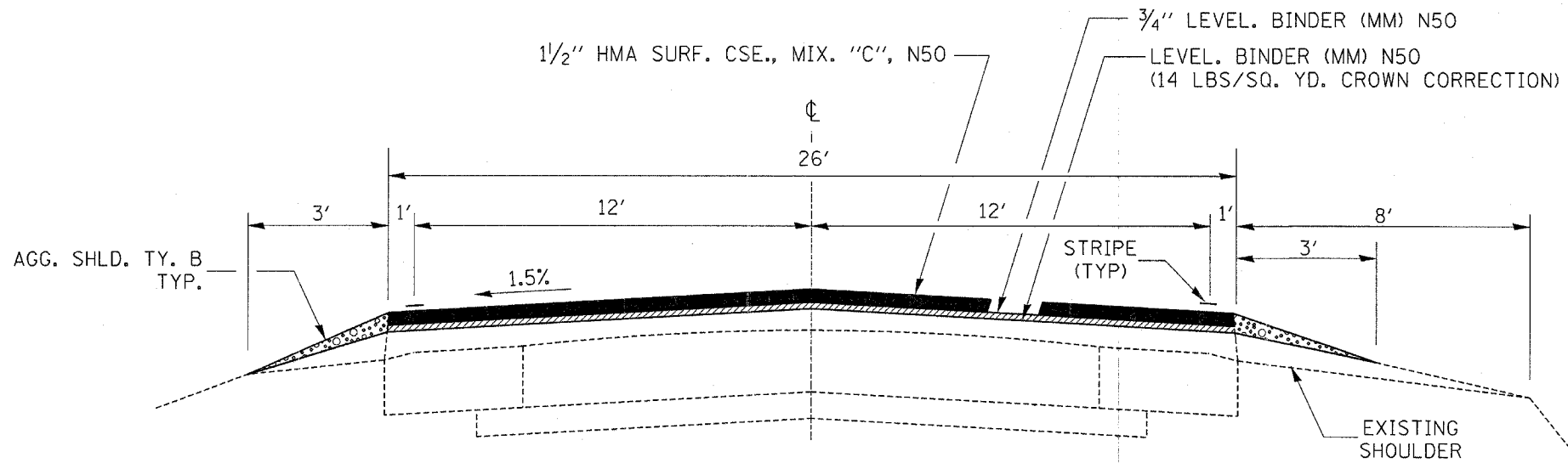
SCALE: VERT. HORIZ. DATE
 DRAWN BY CHECKED BY

F.A.P. RTE.	SECTION	COUNTY	TOTAL SHEETS	SHEET NO.
786	(109,110,111)RS-3	LASALLE	20	6
STA.		TO STA.		
FED. ROAD DIST. NO.	ILLINOIS	FED. AID PROJECT		



PROPOSED TYPICAL 5

* 8% MAX. ROLLOVER
 STA. 114+03 TO STA. 117+03.98



PROPOSED TYPICAL 6

STA. 117+03.98 TO STA. 120+24
 STA. 143+76 TO STA. 150+88.75
 STA. 157+84.20 TO STA. 302+37

(INTERSECTION OMISSION FROM STA. 302+37 TO STA. 306+94)

REVISIONS	
NAME	DATE

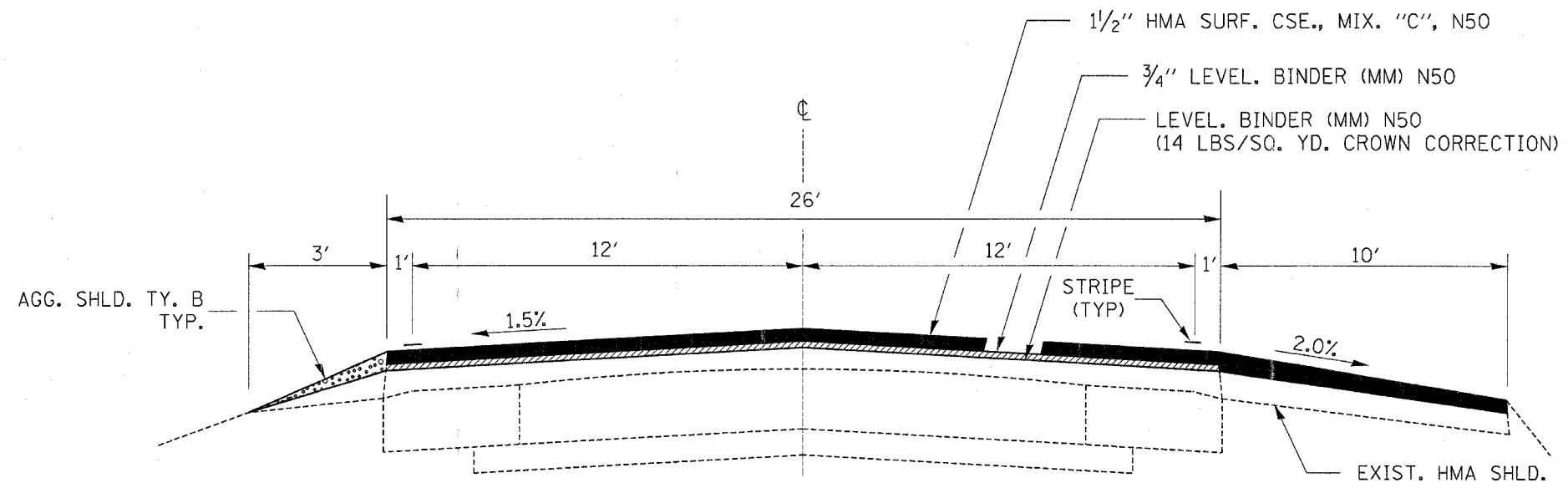
ILLINOIS DEPARTMENT OF TRANSPORTATION

PROPOSED TYPICALS

SCALE: VERT. HORIZ.
 DATE

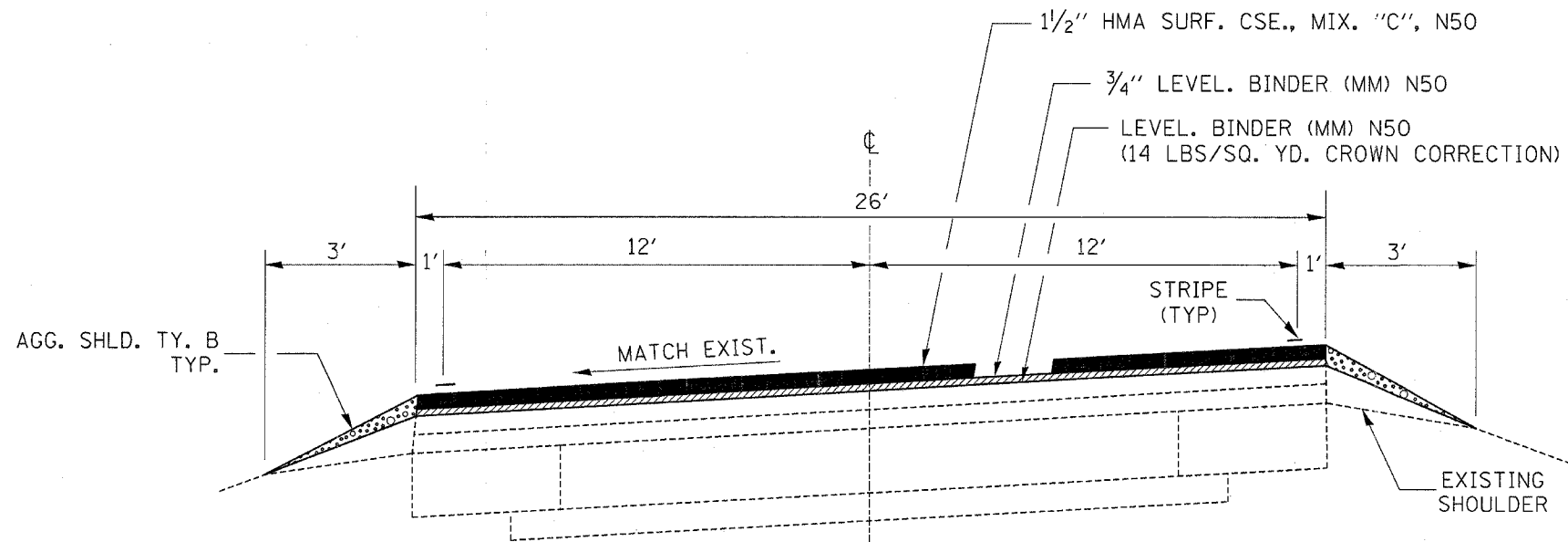
DRAWN BY
 CHECKED BY

F.A.P. RTE.	SECTION	COUNTY	TOTAL SHEETS	SHEET NO.
786	(109,110,111)RS-3	LASALLE	20	7
STA.		TO STA.		
FED. ROAD DIST. NO.	ILLINOIS	FED. AID PROJECT		



PROPOSED TYPICAL 7

STA. 120+24 TO STA. 143+76



PROPOSED TYPICAL 8

STA. 150+88.75 TO STA. 157+84.2

REVISIONS	
NAME	DATE

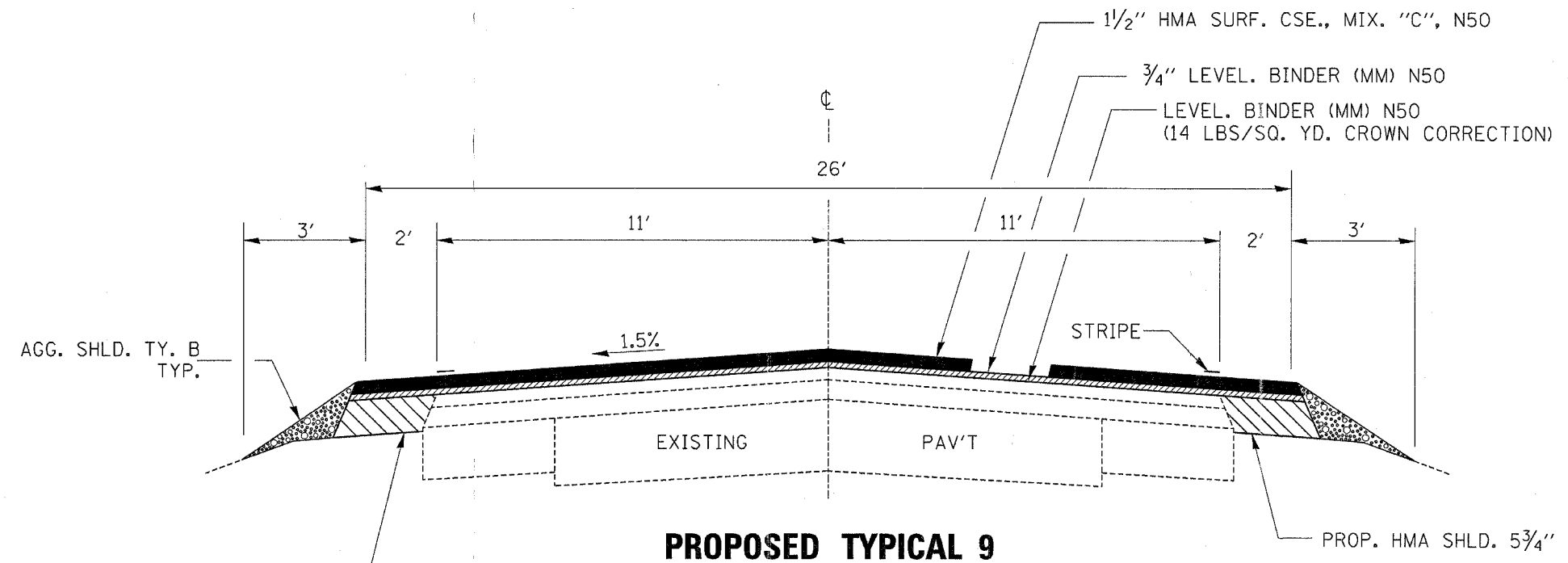
ILLINOIS DEPARTMENT OF TRANSPORTATION

PROPOSED TYPICALS

SCALE: VERT. HORIZ. DATE

DRAWN BY CHECKED BY

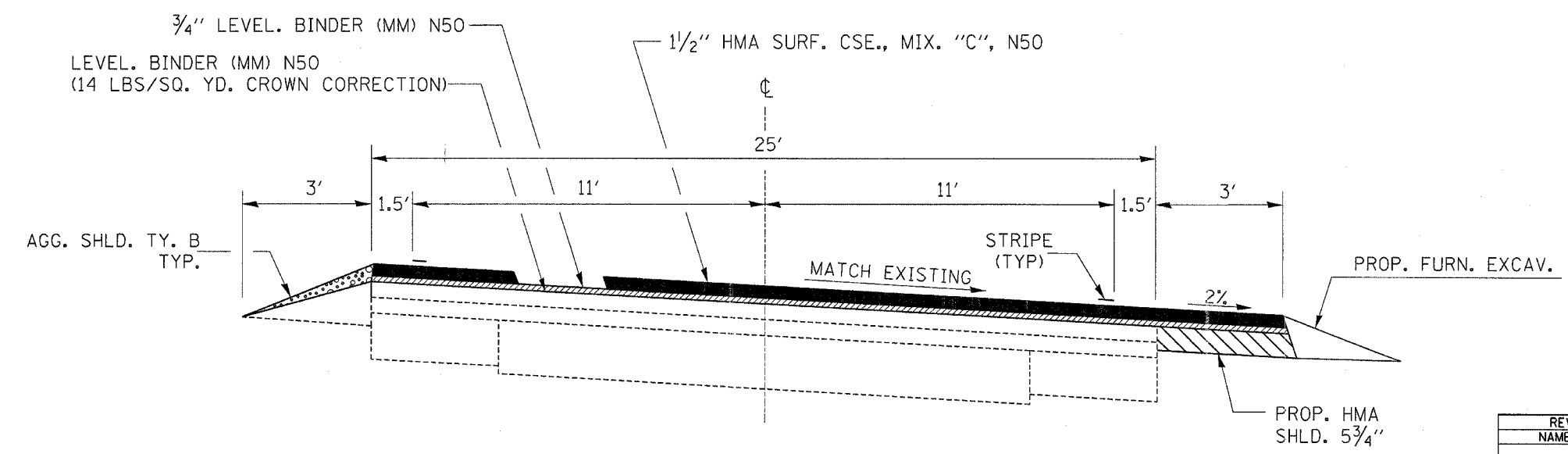
F.A.P. RTE.	SECTION	COUNTY	TOTAL SHEETS	SHEET NO.
786	(109,110,111)RS-3	LASALLE	19	8
STA.		TO STA.		
FED. ROAD DIST. NO.		ILLINOIS	FED. AID PROJECT	



PROPOSED TYPICAL 9

- STA. 306+94 TO STA. 314+04
- STA. 314+24 TO STA. 369+55
- STA. 369+75 TO STA. 445+35
- STA. 445+75 TO STA. 511+60
- STA. 519+65 TO STA. 618+71
- STA. 626+54 TO STA. 685+70
- STA. 707+10 TO STA. 918+12

RAILROAD CROSSING OMISSION STA. 918+12 TO 918+22
 STA. 918+22 TO STA. 943+33



PROPOSED TYPICAL 10

STA. 511+60 TO STA. 519+65

REVISIONS	
NAME	DATE

ILLINOIS DEPARTMENT OF TRANSPORTATION

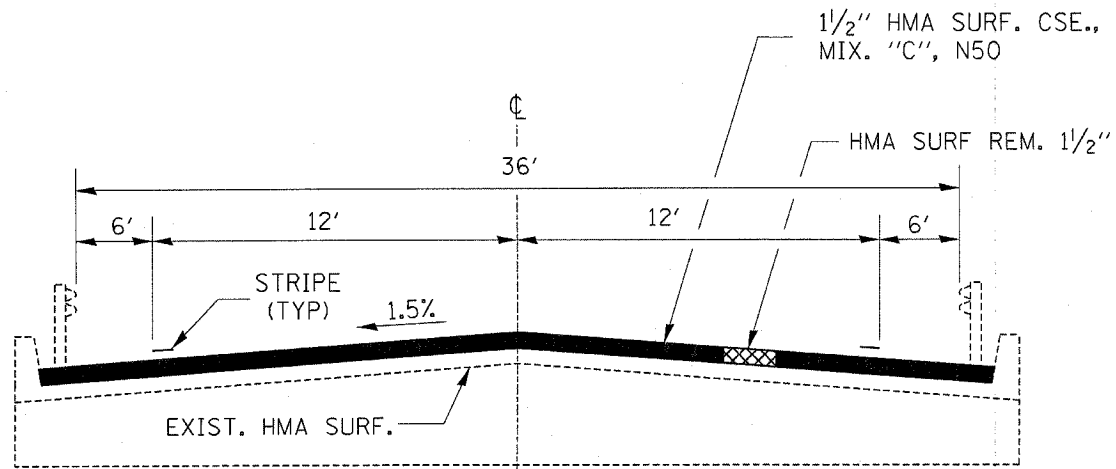
PROPOSED TYPICALS

SCALE: VERT. _____
 HORIZ. _____

DATE _____ DRAWN BY _____
 CHECKED BY _____

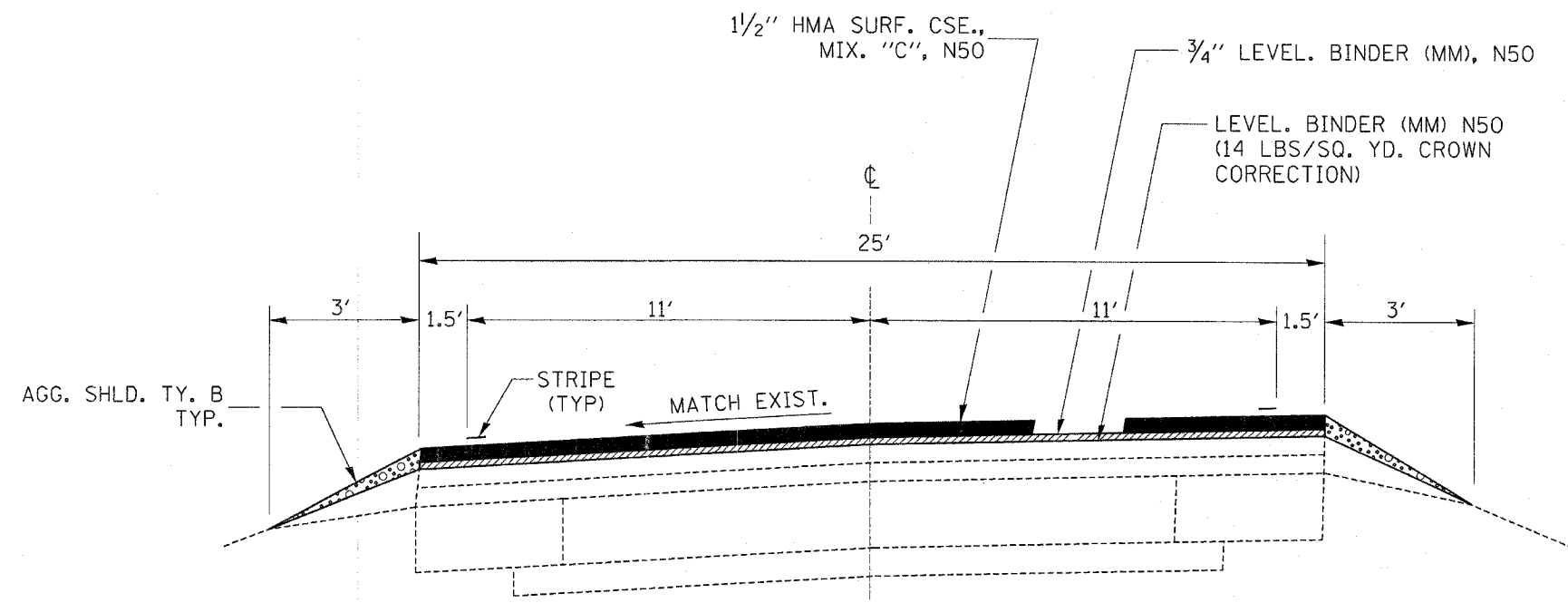
4/12/2007 11:40:31 AM c:\projects\road03901\detail\is.dgn

F.A.P. RTE.	SECTION	COUNTY	TOTAL SHEETS	SHEET NO.
786	(109,110,111)RS-3	LASALLE	20	9
STA.		TO STA.		
FED. ROAD DIST. NO.		ILLINOIS FED. AID PROJECT		



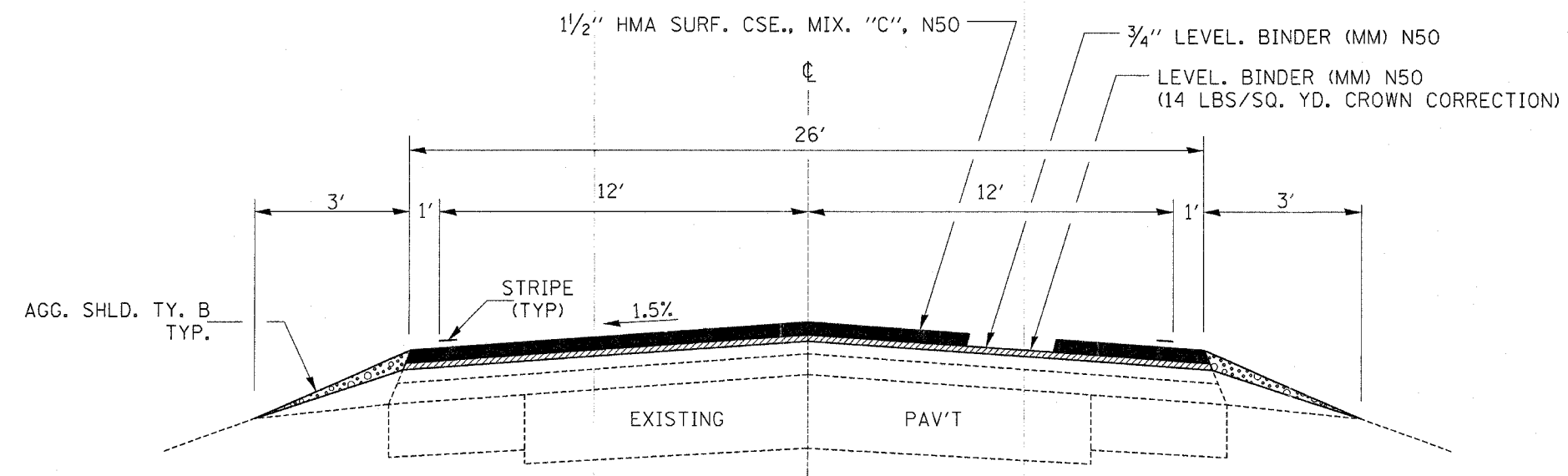
PROPOSED TYPICAL AT STRUCTURES

STA. 314+04 TO STA. 314+24 (S.N. 050-0143)
 STA. 369+55 TO STA. 369+75 (S.N. 050-0156)
 STA. 445+35 TO STA. 445+75 (S.N. 050-0072)



PROPOSED TYPICAL 11

STA. 618+71 TO STA. 626+54



PROPOSED TYPICAL 12

STA. 685+70 TO STA. 696+52
 R.R. OVERPASS OMISSION STA. 696+52 TO STA. 698+31
 STA. 698+31 TO STA. 707+10

REVISIONS	
NAME	DATE

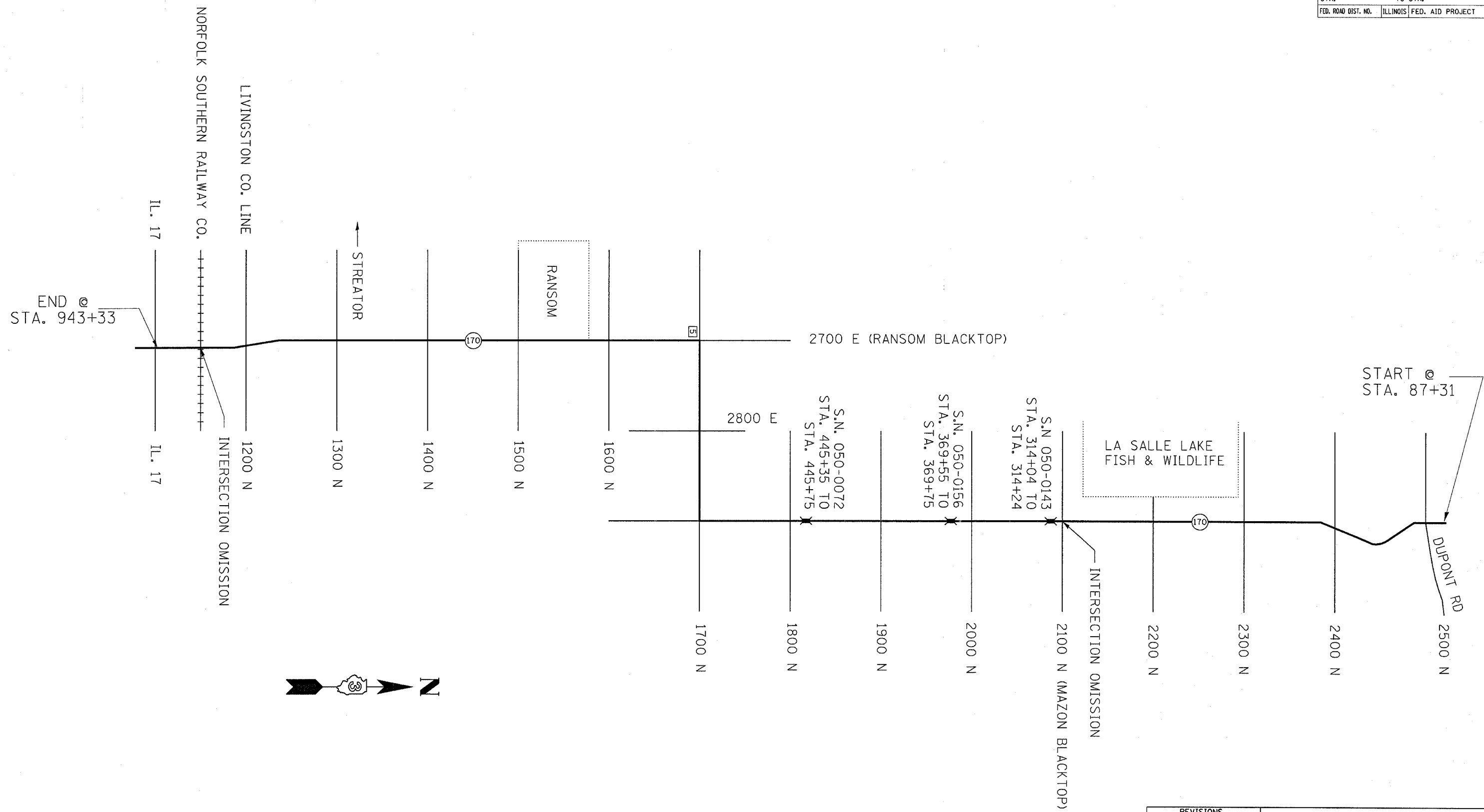
ILLINOIS DEPARTMENT OF TRANSPORTATION

PROPOSED TYPICALS

SCALE: VERT. HORIZ. DATE

DRAWN BY CHECKED BY

F.A.P. RTE.	SECTION	COUNTY	TOTAL SHEETS	SHEET NO.
786	(109,110,111)RS-3	LASALLE	20	10
STA.		TO STA.		
FED. ROAD DIST. NO.		ILLINOIS FED. AID PROJECT		



REVISIONS	
NAME	DATE

ILLINOIS DEPARTMENT OF TRANSPORTATION

SCHEMATIC

SCALE: VERT. _____
 HORIZ. _____

DATE _____

DRAWN BY _____
 CHECKED BY _____

4/18/2007 2:04:18 PM
 c:\p00000000\36300000\041000\011.s.dgn

F.A.P. RTE.	SECTION	COUNTY	TOTAL SHEETS	SHEET NO.
786	(109,110,111)RS-3	LASALLE	20	11
STA.		TO STA.		
FED. ROAD DIST. NO.	ILLINOIS	FED. AID PROJECT		

MAINLINE SCHEDULE													
STA. TO STA.		HMA SURF.	LEVEL BINDER (MM)	LEVEL BINDER (HM)	HMA SURF. REM. BUTT JT.	HMA SURF. REM. 1 1/2"	MIX FOR JTS, CRACKS, & FLGWYS	BIT. MAT'L'S (PR CT)	AGG. (PR CT)	TEMP RAMPS	HMA SHLDR 5 3/4"	FURN. EXCAV. CU YD	AGG. SHLDR TY B
		TONS	TONS	TONS	SQ YD	SQ YD	TONS	GAL	TONS	SQ YD	SQ YD	CU YD	TONS
87+31	89+11	43.7	25.5	0.3		580.0	0.2	83.2	2.1	17.3			
89+11	96+35	196.0	102.5	1.2	193.3	2,332.9	0.7	354.0	8.8				20.6
96+35	97+42	32.1	15.2	0.2		381.8	0.1	55.4	1.4				
97+42	99+24	54.3	25.7	0.3		646.0	0.2	93.7	2.3				
99+24	114+03	441.7	209.4	2.6		5,258.7	1.6	762.5	19.1				
114+03	117+04	89.9	42.6	0.5		1,070.2	0.3	155.2	3.9				8.6
117+04	120+24	77.7	45.3	0.5			0.3	147.9	3.7				19.4
120+24	143+76	843.0	332.9	4.7			2.8	1,296.2	32.4				142.3
143+76	150+88	172.8	100.8	1.0			0.6	329.1	8.2				43.1
150+88	157+84	168.9	98.5	1.0			0.6	321.7	8.0				42.1
157+84	302+37	3,507.3	2,045.9	20.9	173.3		12.5	6,680.5	167.0	17.3			874.4
302+37	306+94												
INTERSECTION OMISSION													
306+94	314+04	172.3	100.5	1.0	173.3		0.6	328.2	8.2	17.3	315.6		43.0
314+04	314+24	6.7				80.0		6.4	0.2				
314+24	369+55	1,342.2	782.9	8.0			4.8	2,556.6	63.9		2,458.2		334.6
369+55	369+75	6.7				80.0		6.4	0.2				
369+75	445+35	1,834.6	1,070.2	10.9			6.6	3,494.4	87.4		3,360.0		457.4
445+35	445+75	13.4				160.0		12.8	0.3				
445+75	511+60	1,598.0	932.1	9.5			5.7	3,043.7	76.1		2,926.7		398.4
511+60	519+65	210.4	122.7	1.3			0.8	400.7	10.0		268.3	15.0	48.7
519+65	618+71	2,403.9	1,402.2	14.3			8.6	4,578.8	114.5		4,402.7		599.3
618+71	626+54	182.7	106.6	1.1			0.7	348.0	8.7				47.4
626+54	685+70	1,435.6	837.4	8.5			5.1	2,734.5	68.4		2,629.3		357.9
685+70	696+52	262.6	153.2	1.6	173.3		0.9	500.1	12.5	17.3			65.5
696+52	698+31												
698+31	707+10	213.3	124.4	1.3	173.3		0.8	406.3	10.2	17.3			53.2
707+10	885+00	4,317.0	2,518.3	25.7			15.4	8,222.9	205.6		7,906.7		1,076.3
885+00	886+23	29.8	17.4	0.2			0.1	56.9	1.4		54.7		7.4
886+23	918+12	773.9	451.4	4.6	173.3		2.8	1,474.0	36.9	17.3	1,417.3		192.9
918+12	918+22												
RAILROAD OMISSION													
918+22	943+33	609.3	355.4	3.6	346.7		2.2	1,160.6	29.0	17.3	1,116.0		151.9
TOTALS		21,040	12,019	125	1,407	10,590	75	39,611	990	121	26,855	15	4,984

CLASS D PATCHING, 14 INCHES			
STA.	SIDE	LENGTH	TYPE II
		FT	SQ YD
117+53	NB	8	11.6
117+53	SB	8	11.6
121+63	NB	6	8.7
121+63	SB	6	8.7
122+62	NB	6	8.7
122+62	SB	6	8.7
125+66	NB	6	8.7
125+66	SB	6	8.7
137+31	NB	8	11.6
137+31	SB	8	11.6
138+72	NB	6	8.7
138+72	SB	6	8.7
139+71	NB	6	8.7
139+71	SB	6	8.7
140+44	NB	6	8.7
140+44	SB	6	8.7
143+79	NB	6	8.7
143+79	SB	6	8.7
160+00	NB	6	8.7
160+00	SB	6	8.7
199+67	SB	6	8.7
212+79	SB	6	8.7
257+26	NB	6	8.7
257+26	SB	6	8.7
268+34	NB	6	8.7
268+34	SB	6	8.7
276+49	NB	6	8.7
276+49	SB	6	8.7
324+67	NB	6	8.7
324+67	SB	6	8.7
354+11	NB	6	8.7
354+11	SB	6	8.7
356+81	NB	6	8.7
356+81	SB	6	8.7
403+80	NB	6	8.7
403+80	SB	6	8.7
413+31	NB	6	8.7
413+31	SB	6	8.7
469+69	NB	6	8.7
469+69	SB	6	8.7
479+90	NB	6	8.7
479+90	SB	6	8.7
487+27	NB	6	8.7
487+27	SB	6	8.7
551+61	NB	6	8.7
551+61	SB	6	8.7
775+00	NB	6	8.7
775+00	SB	6	8.7
834+75	NB	6	8.7
834+75	SB	6	8.7
895+00	NB	6	8.7
895+00	SB	6	8.7
922+10	NB	6	8.7
922+10	SB	6	8.7
TOTALS			480

HOT-MIX ASPHALT SURFACE REMOVAL SCHEDULE						
STA.	LENGTH	LANE	HMA SURF. REM. 1/2"	LEVEL BINDER (MM)	BIT. MAT'L. (PR CT)	AGG. PRIME COAT
			SQ YD	TON	GALLON	TON
163+97	100	NB	144.4	12.1	11.6	0.3
188+84	200	NB	288.9	24.3	23.1	0.6
214+50	150	SB	216.7	18.2	17.3	0.4
254+37	150	SB	216.7	18.2	17.3	0.4
287+59	200	SB	288.9	24.3	23.1	0.6
514+05	150	SB	216.7	18.2	17.3	0.4
518+98	250	SB	361.1	30.3	28.9	0.7
561+21	100	SB	144.4	12.1	11.6	0.3
561+21	100	NB	144.4	12.1	11.6	0.3
TOTALS			2,022	170	162	4

4/12/2007 11:42:36 AM
c:\proj\ecys\ed03904\schedul.es.dgn

REVISIONS	
NAME	DATE

ILLINOIS DEPARTMENT OF TRANSPORTATION

SCHEDULES

SCALE: VERT. _____
HORIZ. _____
DATE _____

DRAWN BY _____
CHECKED BY _____

F.A.P. RTE.	SECTION	COUNTY	TOTAL SHEETS	SHEET NO.
786	(109,110,111)RS-3	LASALLE	20	12
STA.		TO STA.		
FED. ROAD DIST. NO.		ILLINOIS	FED. AID PROJECT	

ENTRANCES AND SIDE ROAD SCHEDULE

STA.	ENT. TYPE	MAT'L. TYPE	HMA SURF. REM. BUTT. JT. SQ YD	HMA SURF. REM. 1 1/2" SQ YD	INCIDENTAL HMA SURF. TONS	BIT. MAT'L. (PR CT) GAL	AGG. (PR CT) TON	TEMP. RAMPS SQ YD	AGG. SURF. CSE. TY. B TON	FURN. EXCAV CU YD
93+22	SR/E	BIT	60.0		46.3	33.0	0.8	18.0		3.0
93+22	SR/W	BIT	71.1		50.3	35.9	0.9	21.3		3.0
97+82	SR/W	BIT			14.2	10.1	0.3			3.0
113+69	CE/E	BIT		14.2	22.8	16.3	0.4			
120+79	PE/E	BIT			4.1	2.9	0.1		3.0	
124+50	PE/E	BIT			4.0	2.8	0.1		3.0	
127+47	PE/E	BIT		4.4	9.1	6.5	0.2			
130+28	PE/E	BIT			3.2	2.3	0.1		3.0	
131+99	PE/E	BIT			4.4	3.2	0.1		3.0	
133+48	PE/E	BIT			4.5	3.2	0.1		3.0	
134+68	PE/E	BIT			3.5	2.5	0.1		3.0	
136+10	PE/E	BIT			4.1	2.9	0.1		3.0	
137+94	PE/E	BIT			4.4	3.1	0.1		3.0	
138+63	PE/E	BIT			4.1	2.9	0.1		3.0	
141+40	PE/E	BIT			3.6	2.6	0.1		3.0	
143+28	PE/E	BIT			4.5	3.2	0.1		3.0	
145+20	PE/W	AGG			4.9	3.5	0.1		3.0	
151+71	PE/W	AGG			5.0	3.6	0.1		3.0	
167+97	PE/E	BIT			5.5	4.0	0.1		3.0	
183+77	SR/W	BIT	53.3		23.9	17.1	0.4	16.0		3.0
183+72	SR/E	BIT	44.4		16.8	12.0	0.3	13.3		3.0
215+25	PE/W	AGG			4.0	2.8	0.1		3.0	
245+46	PE/E	BIT			6.1	4.4	0.1		3.0	
249+25	PE/W	BIT			3.8	2.7	0.1		3.0	
251+50	PE/W	BIT			5.4	3.8	0.1		3.0	
251+50	SR/E	BIT	51.1		14.0	10.0	0.3	15.3		3.0
264+90	PE/W	BIT			4.2	3.0	0.1		3.0	
333+23	PE/E	BIT			6.4	4.6	0.1		3.0	
349+00	PE/E	BIT			4.6	3.3	0.1		3.0	
357+83	SR/W	BIT	51.1		17.0	12.1	0.3	15.3		3.0
357+83	SR/E	BIT	51.1		15.1	10.8	0.3	15.3		3.0
360+77	PE/E	BIT			5.7	4.1	0.1		3.0	
395+70	PE/E	BIT			4.4	3.1	0.1		3.0	
400+40	PE/W	BIT		10.2	4.2	3.0	0.1			
410+85	SR/W	BIT	60.0		16.8	12.0	0.3	18.0		3.0
410+85	SR/E	BIT	60.0		17.9	12.8	0.3	18.0		3.0
414+72	PE/W	BIT			3.7	2.6	0.1		3.0	
442+10	PE/E	BIT			3.8	2.7	0.1		3.0	
463+87	SR/E	BIT	44.4		13.4	9.6	0.2	13.3		3.0
463+87	SR/W	BIT	44.4		13.4	9.6	0.2	13.3		3.0
474+80	PE/E	AGG			3.4	2.4	0.1		3.0	
485+07	PE/W	BIT			6.3	4.5	0.1		3.0	
506+26	PE/E	BIT		8.9	3.9	2.8	0.1			
518+02	SR/E	BIT	62.2		28.1	20.1	0.5	18.7		3.0
546+92	PE/W	BIT			7.3	5.2	0.1		3.0	
569+41	SR/E	BIT			11.2	8.0	0.2			3.0
569+41	SR/W	BIT			11.2	8.0	0.2			3.0
595+70	PE/W	BIT			3.8	2.7	0.1		3.0	
618+55	SR/W	BIT	71.1		25.1	17.9	0.4	21.3		5.0
623+83	SR/W	BIT	53.3		26.0	18.6	0.5	16.0		5.0
626+16	PE/E	BIT			4.5	3.2	0.1		3.0	
653+43	PE/W	AGG			1.8	1.3	0.0		3.0	
664+62	PE/E	BIT			2.4	1.7	0.0		3.0	
672+82	SR/E	BIT			15.7	11.2	0.3			3.0
672+82	SR/W	AGG			15.5	11.1	0.3		6.0	3.0
686+06	PE/E	AGG			3.3	2.4	0.1		3.0	
706+81	SR/W	BIT	60.0		16.6	11.9	0.3	18.0		3.0
712+42	SR/W	BIT	53.3		17.2	12.3	0.3	16.0		3.0
715+94	SR/W	BIT	42.2		12.5	8.9	0.2	12.7		3.0
716+25	PE/E	AGG			3.3	2.4	0.1		3.0	
726+21	SR/E	BIT	46.7		16.1	11.5	0.3	14.0		3.0
726+21	SR/W	BIT	46.7		16.2	11.6	0.3	14.0		3.0
733+75	PE/W	BIT			3.4	2.4	0.1		3.0	
739+55	PE/E	BIT			3.8	2.7	0.1		3.0	
762+08	PE/E	BIT			5.2	3.7	0.1		3.0	
778+73	SR/E	BIT			21.8	15.6	0.4			3.0
778+73	SR/W	BIT			18.3	13.1	0.3			3.0
782+20	PE/E	BIT			5.0	3.6	0.1		3.0	
793+97	PE/E	BIT			4.0	2.8	0.1		3.0	
799+87	PE/W	BIT			3.9	2.8	0.1		3.0	
812+00	PE/W	BIT			3.3	2.4	0.1		3.0	
831+68	SR/E	BIT	66.7		16.1	11.5	0.3	20.0		3.0
831+68	SR/W	BIT	66.7		16.1	11.5	0.3	20.0		3.0
851+01	PE/W	BIT		10.7	3.8	2.7	0.1			
864+88	PE/E	AGG			3.9	2.8	0.1		3.0	
885+04	SR/E	BIT			16.6	11.9	0.3			3.0
885+04	SR/W	BIT			16.1	11.5	0.3			3.0
916+23	CE/E	BIT			13.9	9.9	0.2		5.0	
933+38	PE/W	BIT		4.4	5.6	4.0	0.1			
942+16	CE/E	AGG			12.3	8.8	0.2		5.0	
9 MBT @ 20.4 SQ YD EA.					20.6	14.7	0.4			5.0
TOTALS			1,160	53	852	609	15	348	142	99

REVISIONS	
NAME	DATE

ILLINOIS DEPARTMENT OF TRANSPORTATION

SCHEDULES

SCALE: VERT. _____
HORIZ. _____

DATE _____

DRAWN BY _____
CHECKED BY _____

4/12/2007 11:10:42 AM c:\pro\jects\ed03904\schedul.es.dgn

F.A.P. RTE.	SECTION	COUNTY	TOTAL SHEETS	SHEET NO.
786	(109,110,111)RS-3	LASALLE	20	13
STA.		TO STA.		
FED. ROAD DIST. NO.	ILLINOIS	FED. AID PROJECT		

PAVEMENT MARKINGS SCHEDULE

STA. TO STA.	PAINT PAVEMENT MARKING				THERMOPLASTIC PAVEMENT MARKING				WORK ZONE PAV'T MARK REM	SHORT TERM PAV'T MARK	TEMPORARY PAVEMENT MARKINGS				RAISED REFL PAVT MARK	RAISED REFL PAVT MARK REM	
	4" WHT	4" YELL	6" YELL	24" WHT	4" YELL	6" YELL	24" WHT	LTRS & SYM			4" WHT	4" YELL	6" WHT	24" WHT			LTRS & SYM
	FT	FT	FT	FT	FT	FT	FT	SO FT			FT	FT	FT	FT			SO FT
87+31	116+40	5,818	5,818						96.0	872.7	5,818	5,818		EA	EA		
116+40	122+70	1,260	630	158					20.8	189.0	1,260	630	158	8	8		
122+70	286+85	32,830		4,104					541.7	4,924.5	32,830		4,104	205	205		
286+85	292+92	1,214	607	152					20.0	182.1	1,214	607	152	8	8		
292+92	297+24	864		108					14.3	129.6	864		108	5	5		
297+24	302+37	1,026	513	128					16.9	153.9	1,026	513	128	6	6		
302+37	306+94																
306+94	504+57	39,526		4,941					652.2	3,952.6	39,526		4,941	247	247		
504+57	515+17	2,120	1,060	265					35.0	212.0	2,120	1,060	265	13	13		
515+17	520+69	1,104	1,104						18.2	110.4	1,104	1,104		7	7		
520+69	528+98	1,658	829	207					27.4	165.8	1,658	829	207	10	10		
528+98	536+76	1,556		195					25.7	155.6	1,556		195	10	10		
536+76	545+26	1,700	850	213					28.1	170.0	1,700	850	213	11	11		
545+26	546+61	270		34					4.5	27.0	270		34	2	2		
546+61	555+03	1,684	842	211					27.8	168.4	1,684	842	211	11	11		
555+03	570+00	2,994		374					49.4	299.4	2,994		374	19	19		
570+00	576+35	1,270	635	159					21.0	127.0	1,270	635	159	8	8		
576+35	578+48	426		53					7.0	42.6	426		53	3	3		
578+48	583+25	954	477	119					15.7	95.4	954	477	119	6	6		
583+25	609+13	5,176		647					85.4	517.6	5,176		647	32	32		
609+13	617+02	1,578	789	197					26.0	157.8	1,578	789	197	10	10		
617+02	624+55	1,506	1,506						24.8	150.6	1,506	1,506		9	9		
624+55	631+58	1,406	703	176					23.2	140.6	1,406	703	176	9	9		
631+58	633+95	474	474						7.8	47.4	474	474		3	3		
633+95	639+85	1,180	590	148					19.5	118.0	1,180	590	148	7	7		
639+85	642+26	482		60					8.0	48.2	482		60	3	3		
642+26	651+17	1,782	891	223					29.4	178.2	1,782	891	223	11	11		
651+17	655+06	778		97					12.8	77.8	778		97	5	5		
655+06	673+61	3,710	1,855	464					61.2	371.0	3,710	1,855	464	23	23		
673+61	674+46	170		21					2.8	17.0	170		21	1	1		
674+46	681+85	1,478	739	185					24.4	147.8	1,478	739	185	9	9		
681+85	687+44	1,118		140					18.4	111.8	1,118		140	7	7		
687+44	696+52	1,816	908	227					30.0	181.6	1,816	908	227	11	11		
696+52	698+31	358	358						5.9	35.8	358	358		2	2		
698+31	707+92	1,922	961	240					31.7	192.2	1,922	961	240	12	12		
707+92	783+43	15,102		1,888					249.2	1,510.2	15,102		1,888	94	94		
783+43	792+43	1,800	900	225					29.7	180.0	1,800	900	225	11	11		
792+43	794+22	358		45					5.9	35.8	358		45	2	2		
794+22	800+88	1,332	666	167					22.0	133.2	1,332	666	167	8	8		
800+88	869+23	13,670		1,709					225.6	1,367.0	13,670		1,709	85	85		
869+23	877+32	1,618	809	202					26.7	161.8	1,618	809	202	10	10		
877+32	895+74	3,684	3,684						60.8	368.4	3,684	3,684		23	23		
895+74	904+09	1,670	835	209					27.6	167.0	1,670	835	209	10	10		
904+09	913+12	1,806		226					29.8	180.6	1,806		226	11	11		
913+12	918+12	1,000			1,000	125	72.0	61.2	16.5	100.0	1,000	1,000	125	72.0	61.2	6	6
918+12	923+88	1,132			1,132	142	72.0	61.2	18.7	113.2	1,132	1,132	142	72.0	61.2	7	7
923+88	943+33	3,890		486					64.2	389.0	3,890		486	24	24		
E 27th ST.				12.0					71.3	216.0			12.0				
N 17th ST.				11.0					65.3	198.0			11.0				
SUBTOTALS		170,270.0	30,033.0	19,403.0	23.0	2,132.0	267.0	144.0	122.4	2,946.1	170,270.0	32,165.0	19,666	167.0	122.4	1,064	1,064
TOTALS		200,303		19,403	23	2132	267	144	122.4	2,946		202,435	19,666	167	122.4	1,064	1,064

NOTE: THE FOLLOWING NO PASSING ZONES SHOULD BE FIELD VERIFIED BY THE ENGINEER PRIOR TO RESURFACING.

NB - STA. 87+31 TO STA. 122+70
 NB - STA. 297+24 TO STA. 303+06
 NB - STA. 515+17 TO STA. 528+98
 NB - STA. 546+61 TO STA. 555+03
 NB - STA. 578+48 TO STA. 583+25
 NB - STA. 617+02 TO STA. 633+95

NB - STA. 642+26 TO STA. 651+17
 NB - STA. 674+46 TO STA. 681+85
 NB - STA. 696+52 TO STA. 707+92
 NB - STA. 794+22 TO STA. 800+88
 NB - STA. 877+32 TO STA. 904+09
 NB - STA. 918+22 TO STA. 923+88

SB - STA. 87+31 TO STA. 116+40
 SB - STA. 286+85 TO STA. 292+92
 SB - STA. 504+57 TO STA. 520+69
 SB - STA. 536+76 TO STA. 545+26
 SB - STA. 570+00 TO STA. 576+35
 SB - STA. 609+13 TO STA. 624+55

SB - STA. 631+58 TO STA. 639+85
 SB - STA. 655+06 TO STA. 673+61
 SB - STA. 687+44 TO STA. 698+31
 SB - STA. 783+43 TO STA. 792+43
 SB - STA. 869+23 TO STA. 895+74
 SB - STA. 913+12 TO STA. 918+12

4/13/2007 10:38:00 AM c:\p\proj\sect\ed03904\schedule.sch.dgn

ILLINOIS DEPARTMENT OF TRANSPORTATION

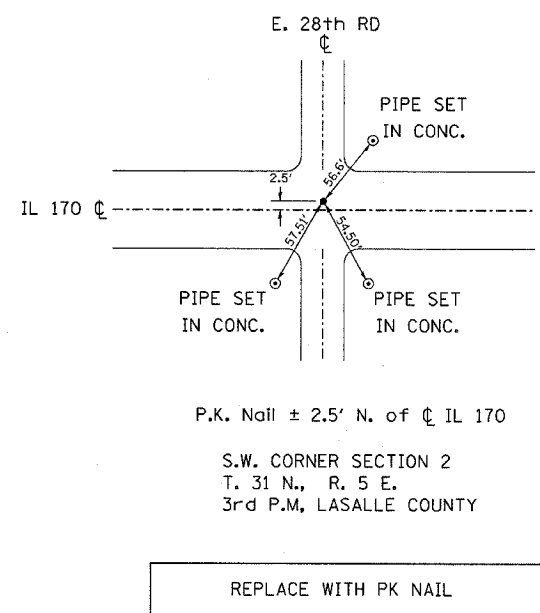
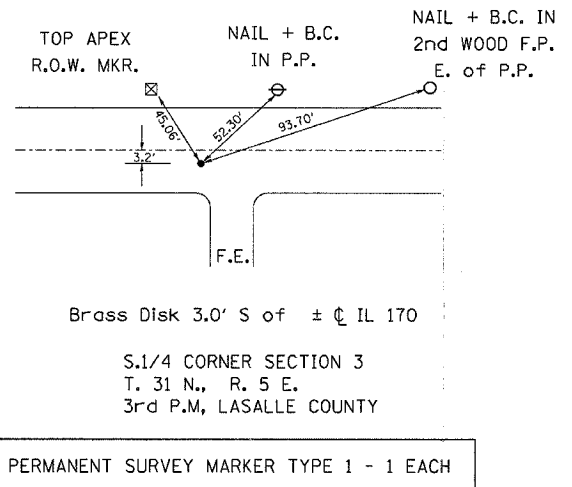
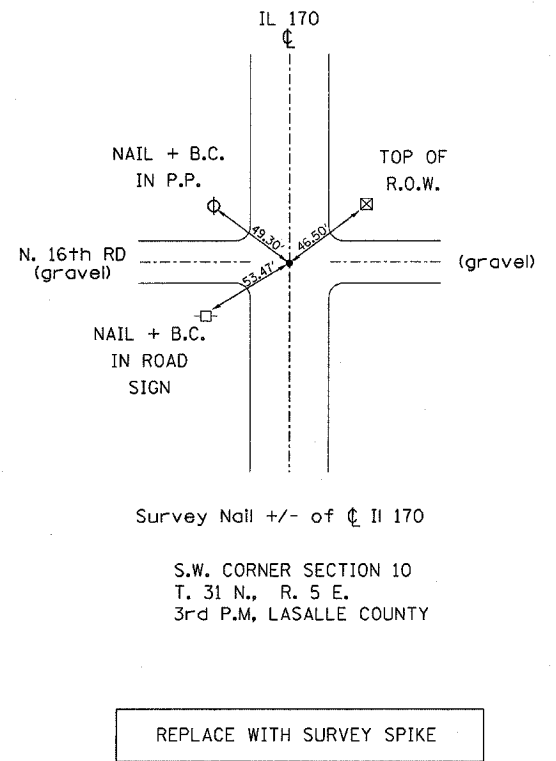
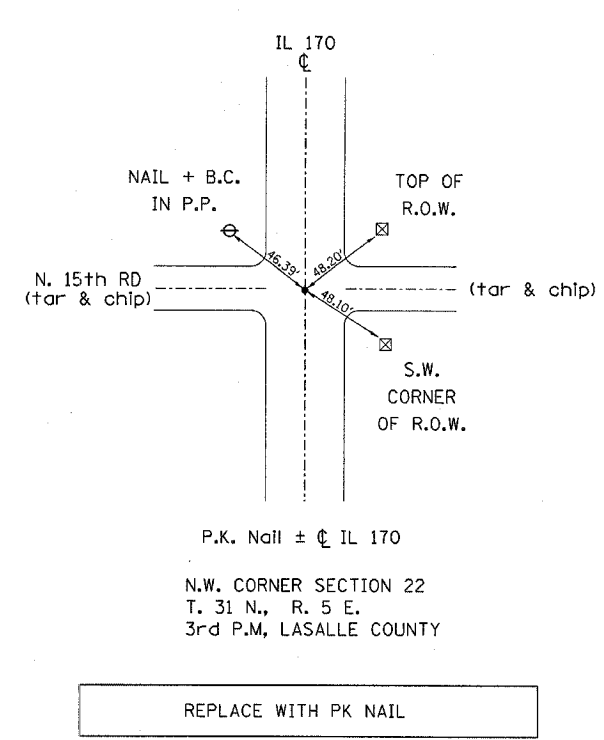
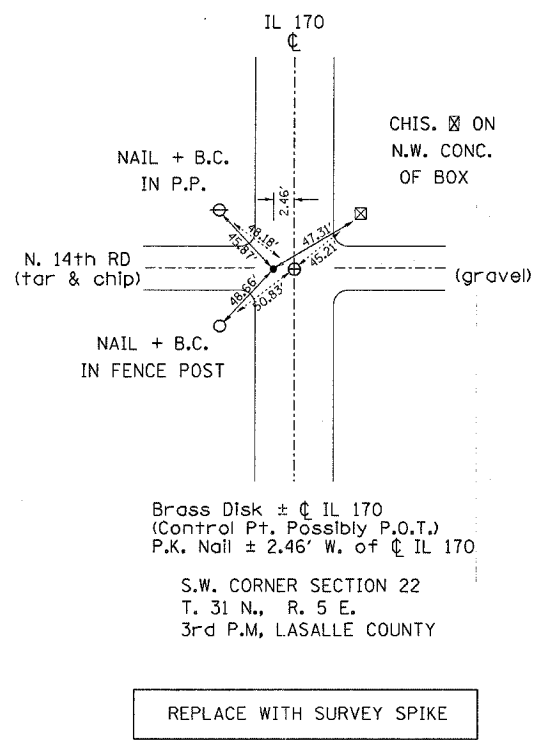
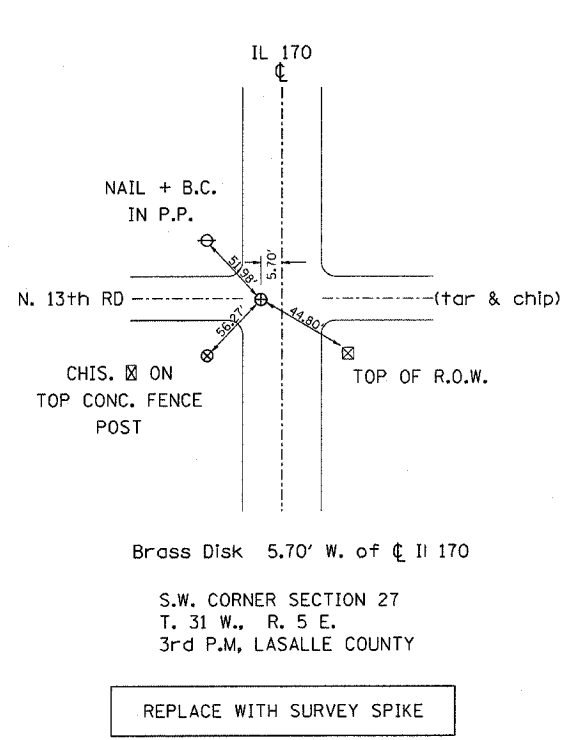
SCHEDULES

REVISIONS	
NAME	DATE

SCALE: VERT.
 HORIZ.
 DATE

DRAWN BY
 CHECKED BY

F.A.P. RTE.	SECTION	COUNTY	TOTAL SHEETS	SHEET NO.
786	(109,110,111)RS-3	LASALLE	20	14
STA.		TO STA.		
FED. ROAD DIST. NO.	ILLINOIS	FED. AID PROJECT		



4/12/2007 11:18:43 AM
c:\p07\ec\3904\03904\detail\is.dgn
ED03904\DETAILS.DGN

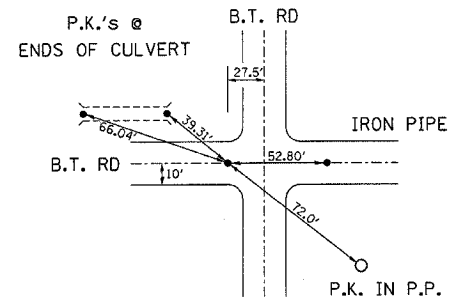
ALLEN TOWNSHIP

ILLINOIS DEPARTMENT OF TRANSPORTATION

TIE POINTS

SCALE: VERT. HORIZ. DATE
DRAWN BY CHECKED BY

F.A.P. RTE.	SECTION	COUNTY	TOTAL SHEETS	SHEET NO.
786	(109,110,111)RS-3	LASALLE	20	15
STA.		TO STA.		
FED. ROAD DIST. NO.	ILLINOIS	FED. AID PROJECT		

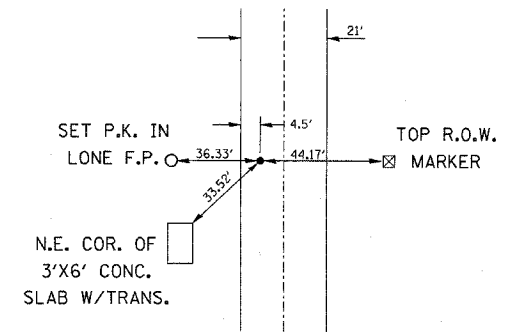


P.K. Nail is ± 27.5' W. of ϕ IL 170

N.E. CORNER SECTION 2
T. 31 N., R. 5 E.
3rd P.M., LASALLE COUNTY

PERMANENT SURVEY MARKER TYPE 1 - 1 EACH

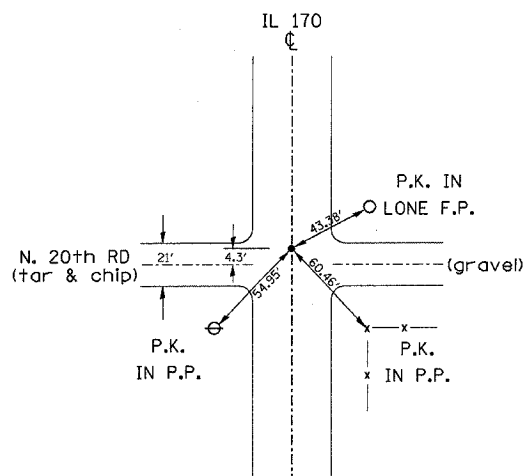
ALLEN TOWNSHIP



Brass Disk ± 4.5' W. of ϕ IL 170

W. 1/4 CORNER SECTION 24
T. 32 N., R. 5 E.
3rd P.M., LASALLE COUNTY

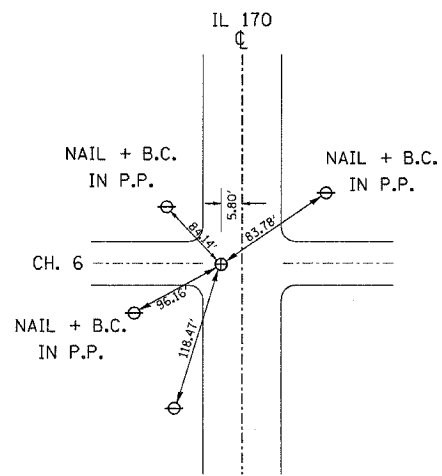
REPLACE WITH SURVEY SPIKE



P.K. Nail ± ϕ IL 170

S.W. CORNER SECTION 24
T. 32 N., R. 5 E.
3rd P.M., LASALLE COUNTY

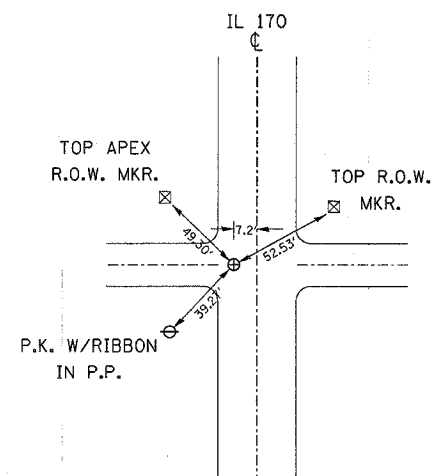
REPLACE WITH PK NAIL



Brass Disk ± 5.80' W of ϕ IL 170

S.W. CORNER SECTION 13
T. 32 N., R. 5 E.
3rd P.M., LASALLE COUNTY

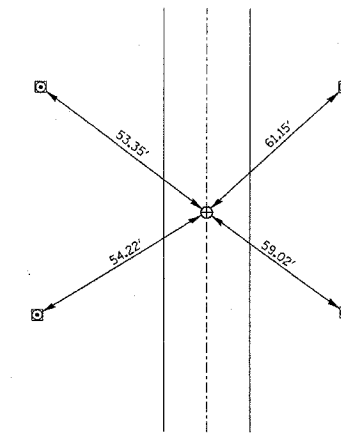
REPLACE WITH SURVEY SPIKE



Brass Disk ± 7.2' W. of ϕ IL 170

S.E. CORNER SECTION 11
T. 32 N., R. 5 E.
3rd P.M., LASALLE COUNTY

PERMANENT SURVEY MARKER TYPE 1 - 1 EACH



Brass Disk on ϕ IL 170

N.W. CORNER SECTION 12
T. 32 N., R. 5 E.
3rd P.M., LASALLE COUNTY

PERMANENT SURVEY MARKER TYPE 1 - 1 EACH



BROOKFIELD TOWNSHIP

REVISIONS	
NAME	DATE

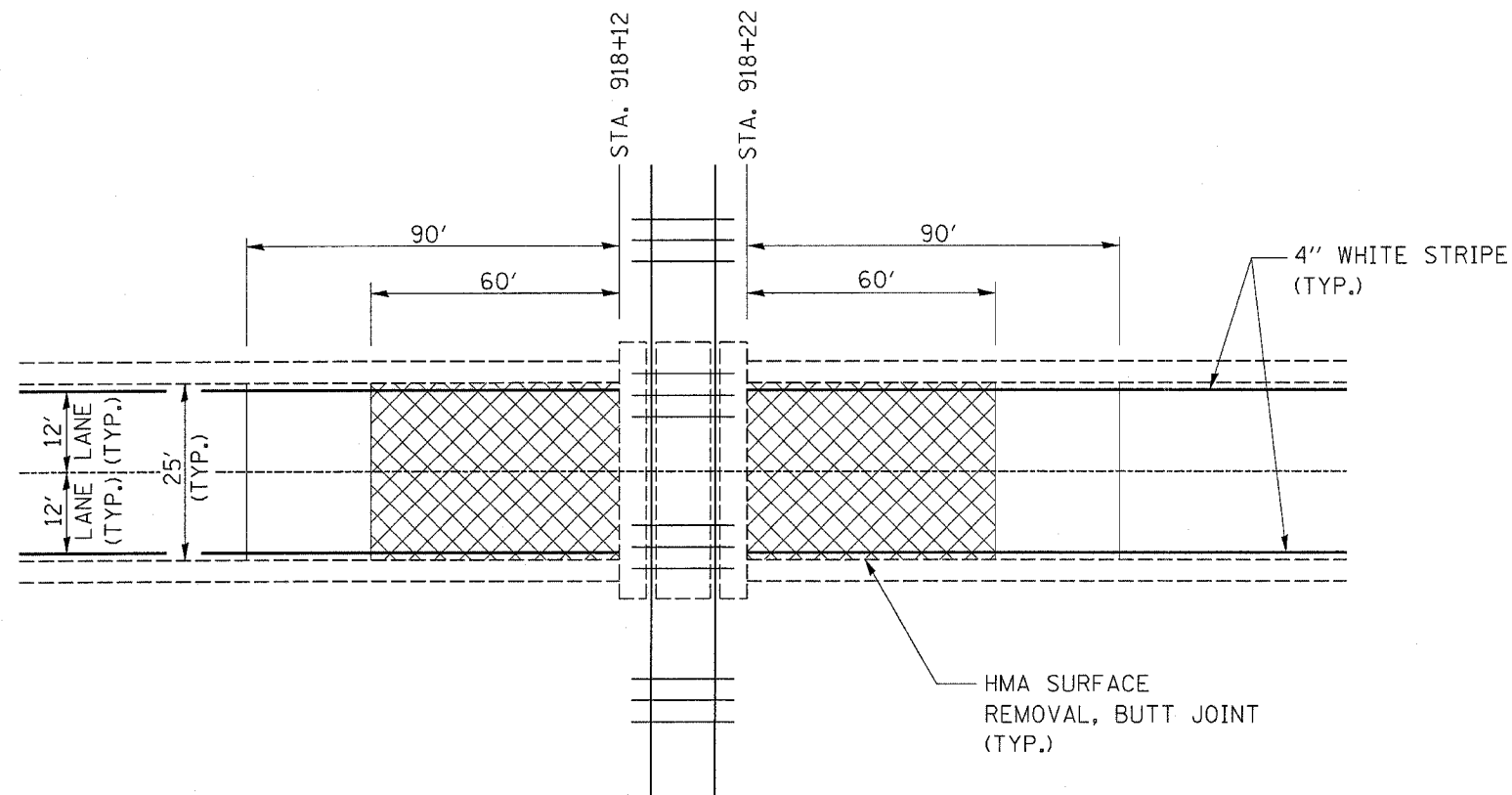
ILLINOIS DEPARTMENT OF TRANSPORTATION

TIE POINTS

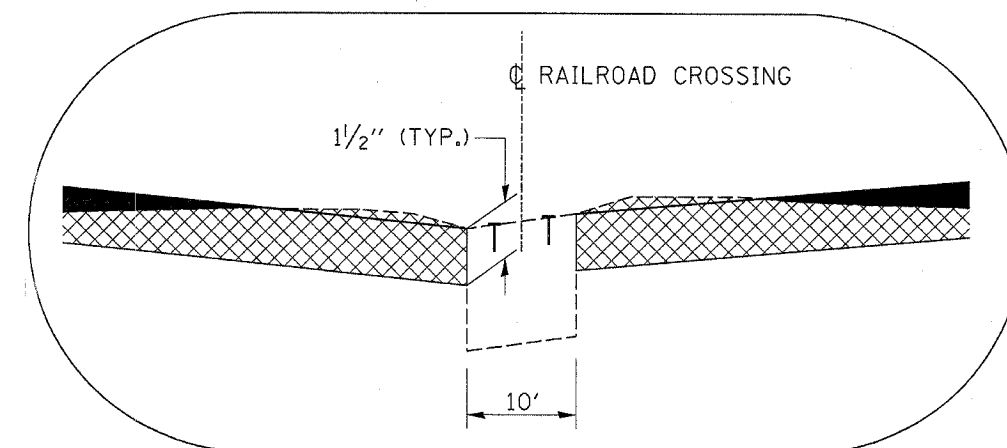
SCALE: VERT.
HORIZ.
DATE

DRAWN BY
CHECKED BY

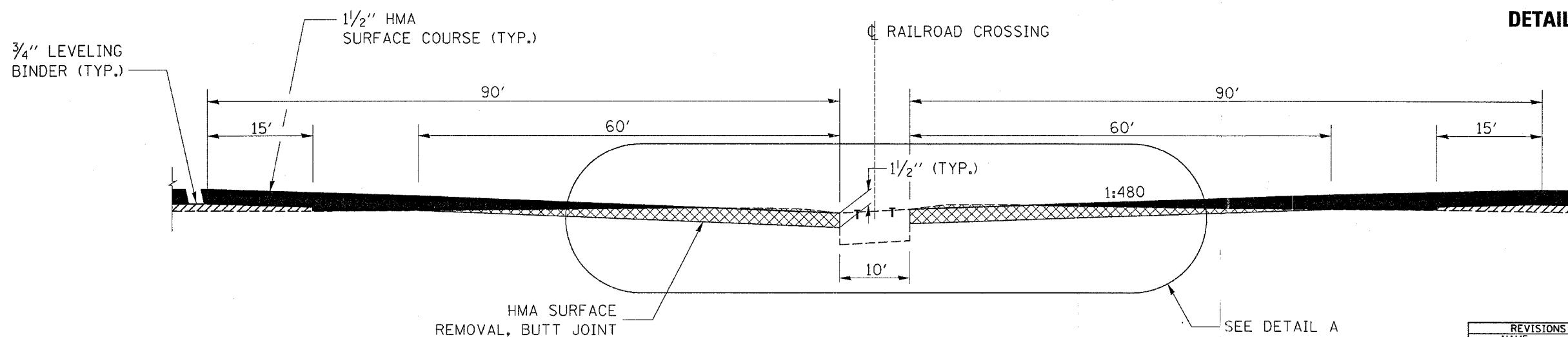
F.A.P. RTE.	SECTION	COUNTY	TOTAL SHEETS	SHEET NO.
786	(109,110,111)RS-3	LASALLE	20	16
STA.		TO STA.		
FED. ROAD DIST. NO.	ILLINOIS	FED. AID PROJECT		



PLAN AT RAILROAD CROSSING



DETAIL A



BUTT JOINT AT RAILROAD CROSSING

REVISIONS	
NAME	DATE

ILLINOIS DEPARTMENT OF TRANSPORTATION

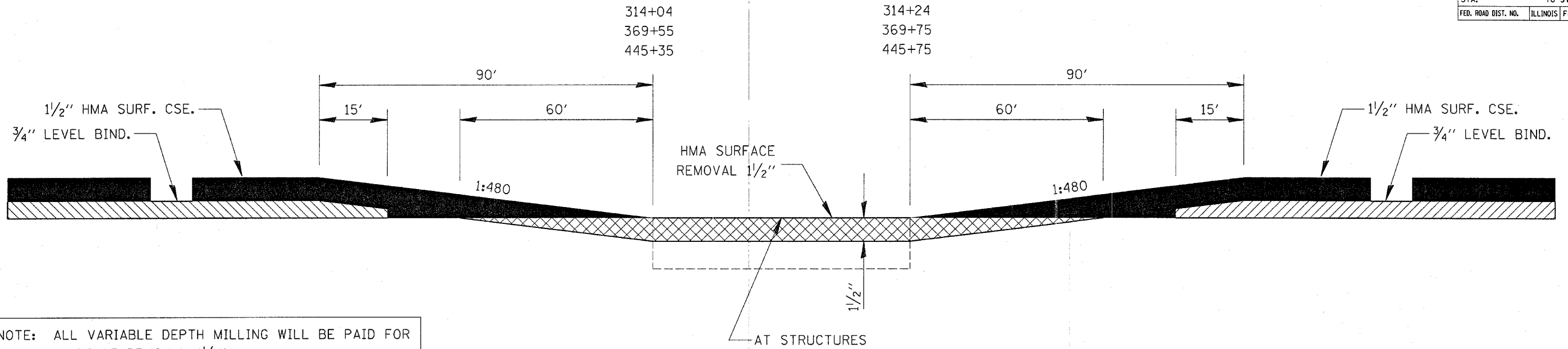
DETAILS

SCALE: VERT. HORIZ. DATE

DRAWN BY CHECKED BY

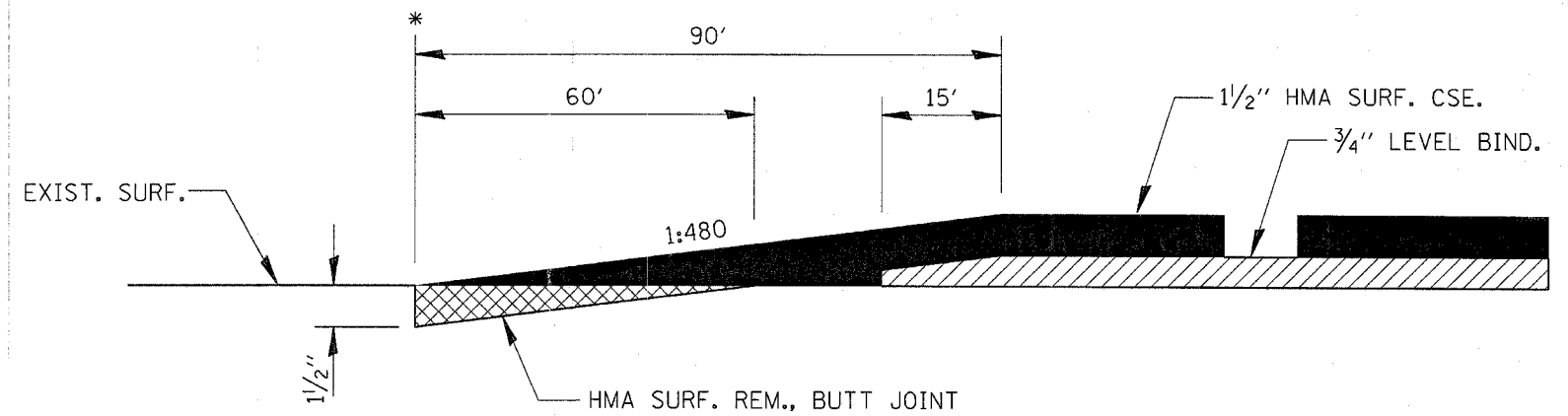
4/18/2007 2:04:19 PM c:\p0209664\66439\0304108.dwg

F.A.P. RTE.	SECTION	COUNTY	TOTAL SHEETS	SHEET NO.
786	(109,110,111)RS-3	LASALLE	20	17
STA.		TO STA.		
FED. ROAD DIST. NO.		ILLINOIS FED. AID PROJECT		



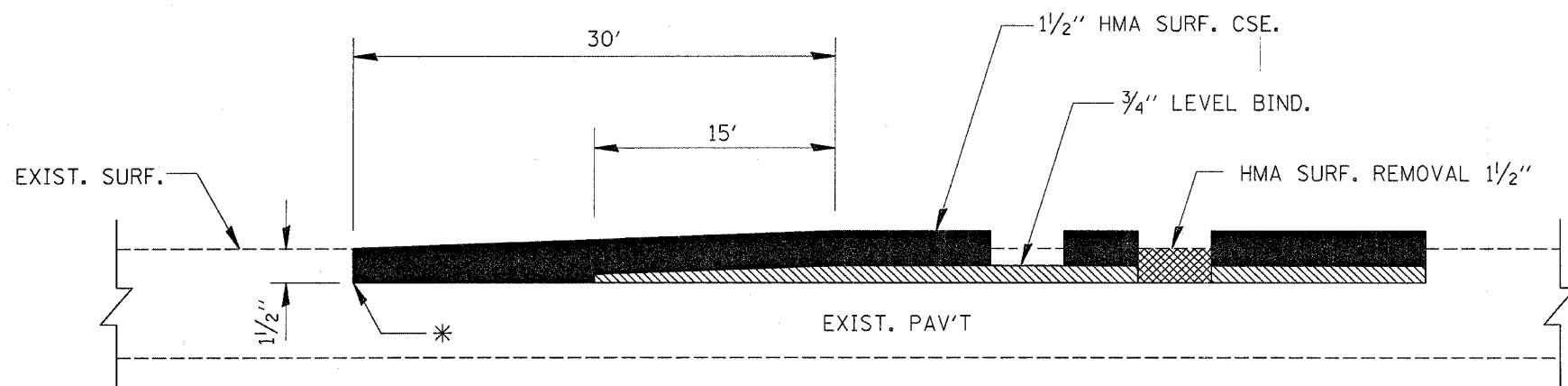
NOTE: ALL VARIABLE DEPTH MILLING WILL BE PAID FOR AS HMA SURFACE REMOVAL 1/2"

HMA SURFACE REMOVAL 1 1/2" AT STRUCTURES



BUTT JOINT DETAIL

- * STA. 696+52
- STA. 698+31
- STA. 943+33



HMA SURFACE REMOVAL 1 1/2" AT TERMINI

* STA. 87+31

REVISIONS	
NAME	DATE

ILLINOIS DEPARTMENT OF TRANSPORTATION

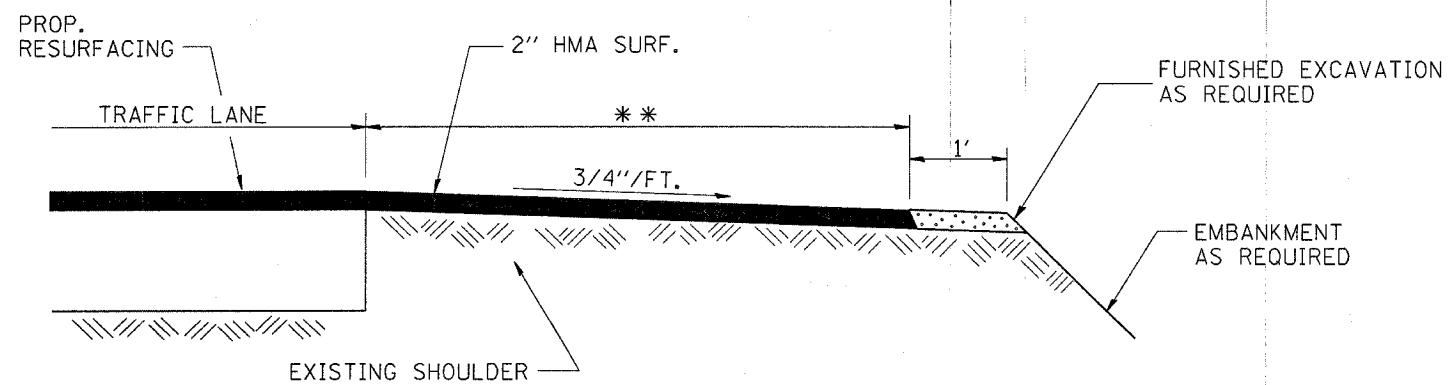
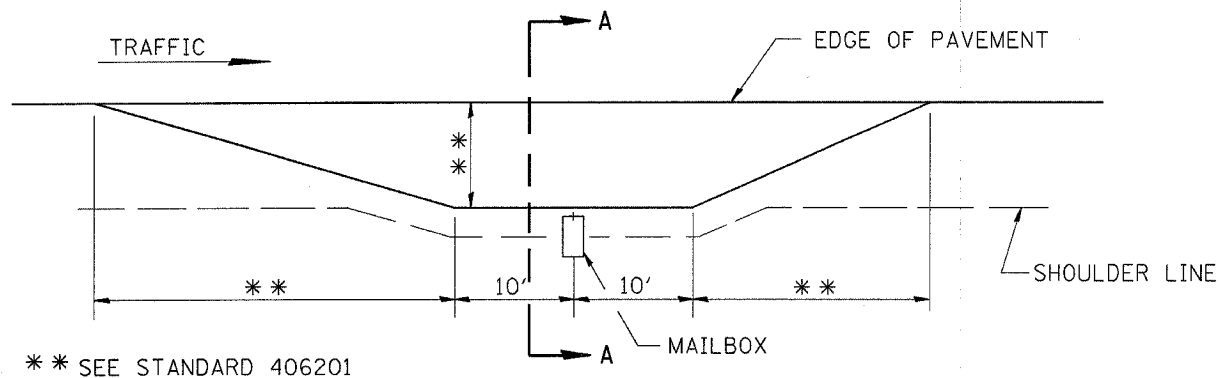
DETAILS

SCALE: VERT. HORIZ. DATE

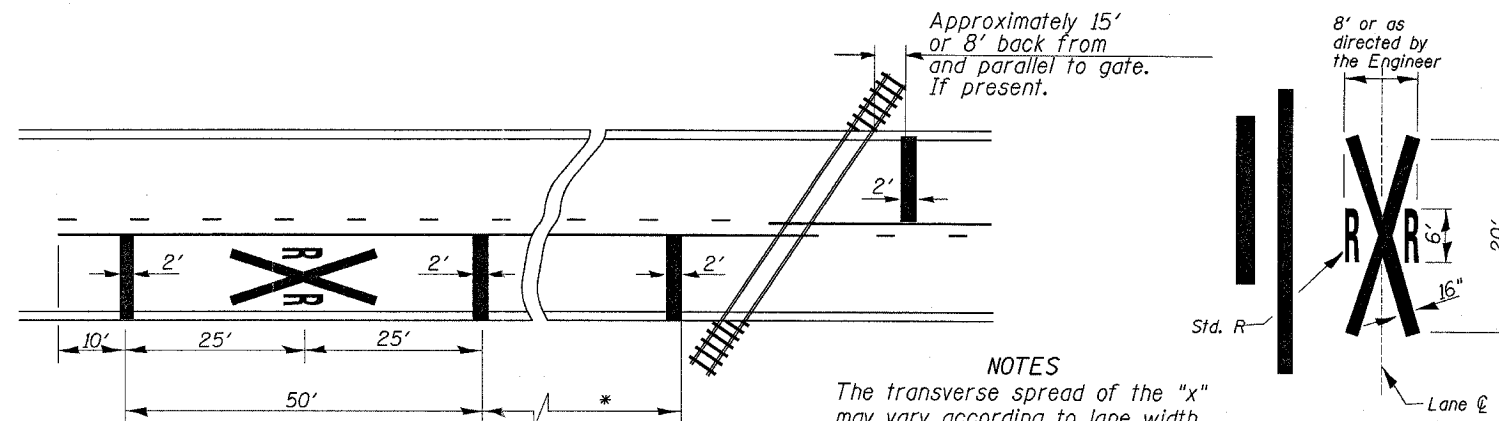
DRAWN BY CHECKED BY

4/12/2007 11:19:45 AM ed:\p\07\ec\08\03904\detail17.dgn EDO3904\DETAILS.DGN

F.A.P. RTE.	SECTION	COUNTY	TOTAL SHEETS	SHEET NO.
786	(109,110,111)RS-3	LASALLE	20	18
STA.		TO STA.		
FED. ROAD DIST. NO.	ILLINOIS	FED. AID PROJECT		



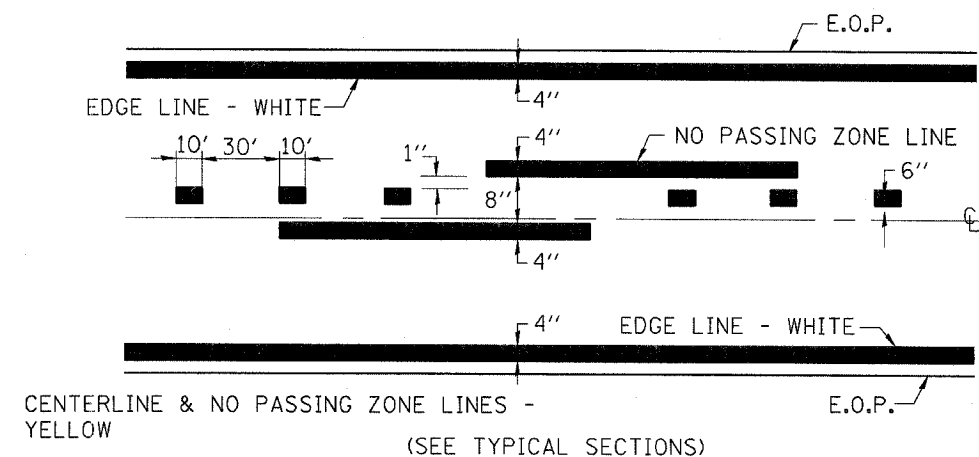
SECTION A-A
MAILBOX TURNOUT DETAILS



* Minimum Distance
400' for 55 MPH
250' for 45 MPH
100' for 35 MPH or Less

NOTES
The transverse spread of the "x" may vary according to lane width.
On multi-lane roads, the stop lines shall extend across all approach lanes and separate RXR symbols shall be placed adjacent to each other in each lane.

PAVEMENT MARKINGS AT RAILROAD-HIGHWAY GRADE CROSSING



PAVEMENT MARKING

REVISIONS	
NAME	DATE

ILLINOIS DEPARTMENT OF TRANSPORTATION

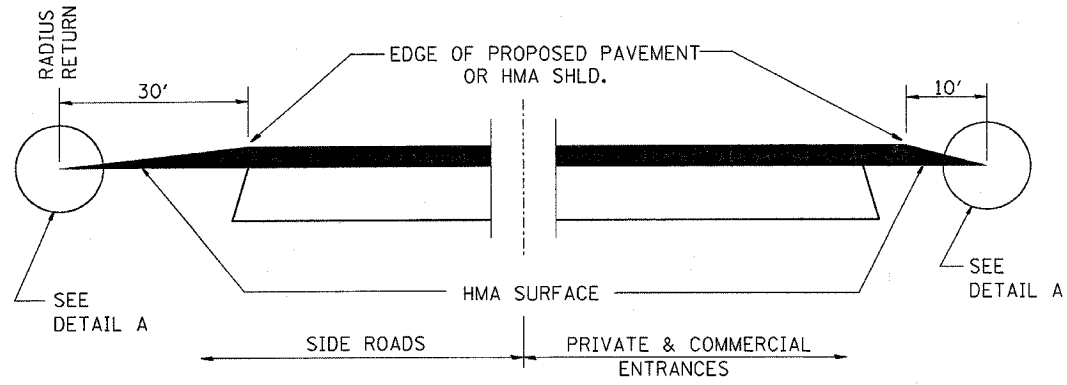
DETAILS

SCALE: VERT. HORIZ. DATE

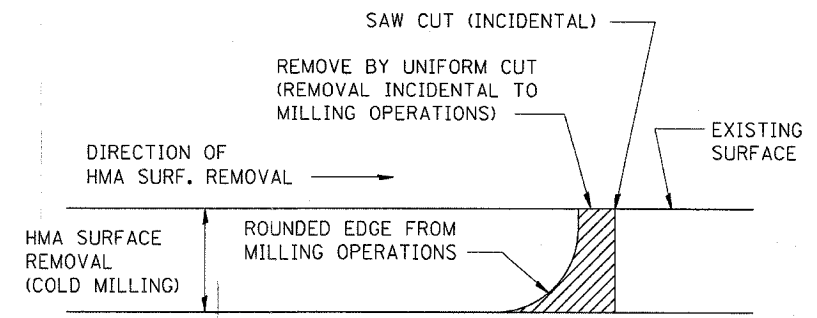
DRAWN BY CHECKED BY

4/12/2007 4:23:52 PM d:\p\projects\0603904\detail\is.dgn EDO3904\DETAILS.DGN

F.A.P. RTE.	SECTION	COUNTY	TOTAL SHEETS	SHEET NO.
786	(109,110,111)RS-3	LASALLE	20	19
STA.		TO STA.		
FED. ROAD DIST. NO.	ILLINOIS	FED. AID PROJECT		

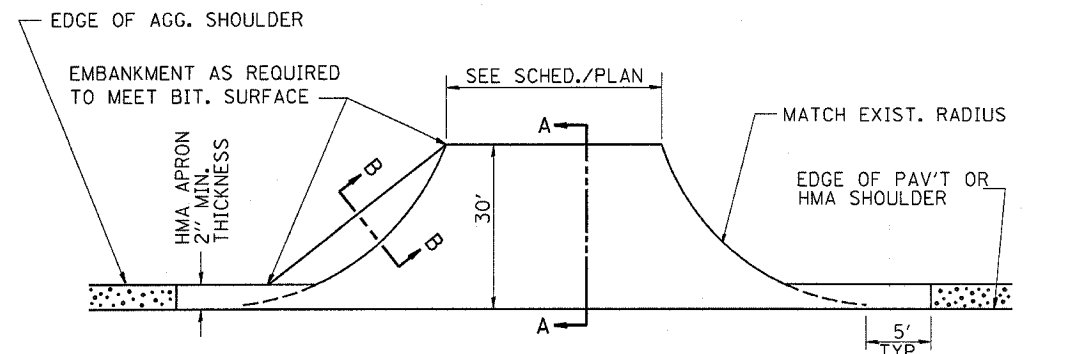


SECTION A-A
DETAILS AT ENTRANCES & SIDE ROADS



NOTE: WHEN MILLING OPERATIONS PRODUCE A ROUNDED EDGE, THEN A SAW CUT SHALL BE USED TO MANUFACTURE A PERPENDICULAR EDGE AS SHOWN IN THE DETAIL. THE ENGINEER SHALL BE THE SOLE JUDGE CONCERNING THE USE OF THIS DETAIL

HMA DETAIL AT BUTT JOINTS

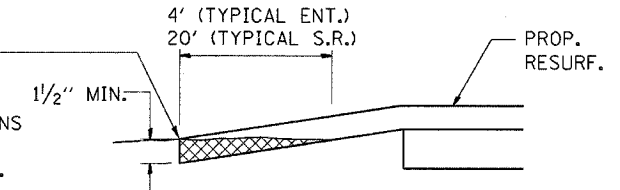


AGG. SHOULDER IS NOT TO BE PLACED AROUND SIDE ROAD RADII

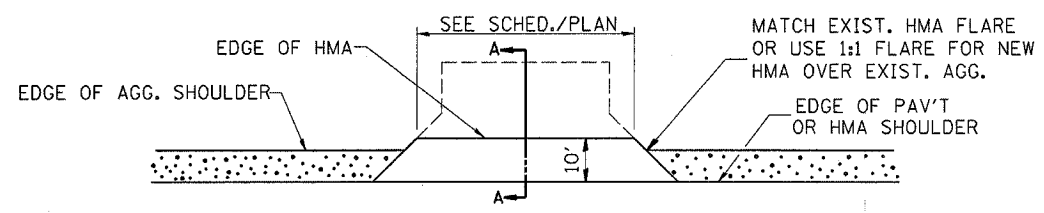
PROP. HMA SHLD. SHALL NOT BE CONSTRUCTED THRU HMA SIDEROADS.

PLAN AT SIDE ROADS

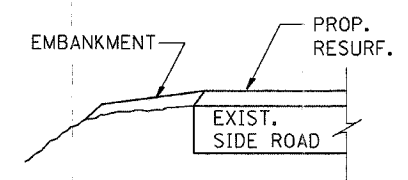
THE COST OF REMOVAL AT EXISTING HMA OR P.C.C. LOCATIONS SHALL BE PAID FOR PER SQ. YD. BY THE APPROPRIATE PAY ITEM. REMOVAL AT EXISTING AGG. LOCATIONS SHALL BE INCIDENTAL TO THE HMA A-3 LOCATIONS SHALL BE FEATHER TAPERED.



DETAIL A



PLAN AT PRIVATE & COMMERCIAL ENTRANCES
(DO NOT RESURFACE FIELD ENTRANCES)



SECTION B-B

REVISIONS	
NAME	DATE

ILLINOIS DEPARTMENT OF TRANSPORTATION

DETAILS

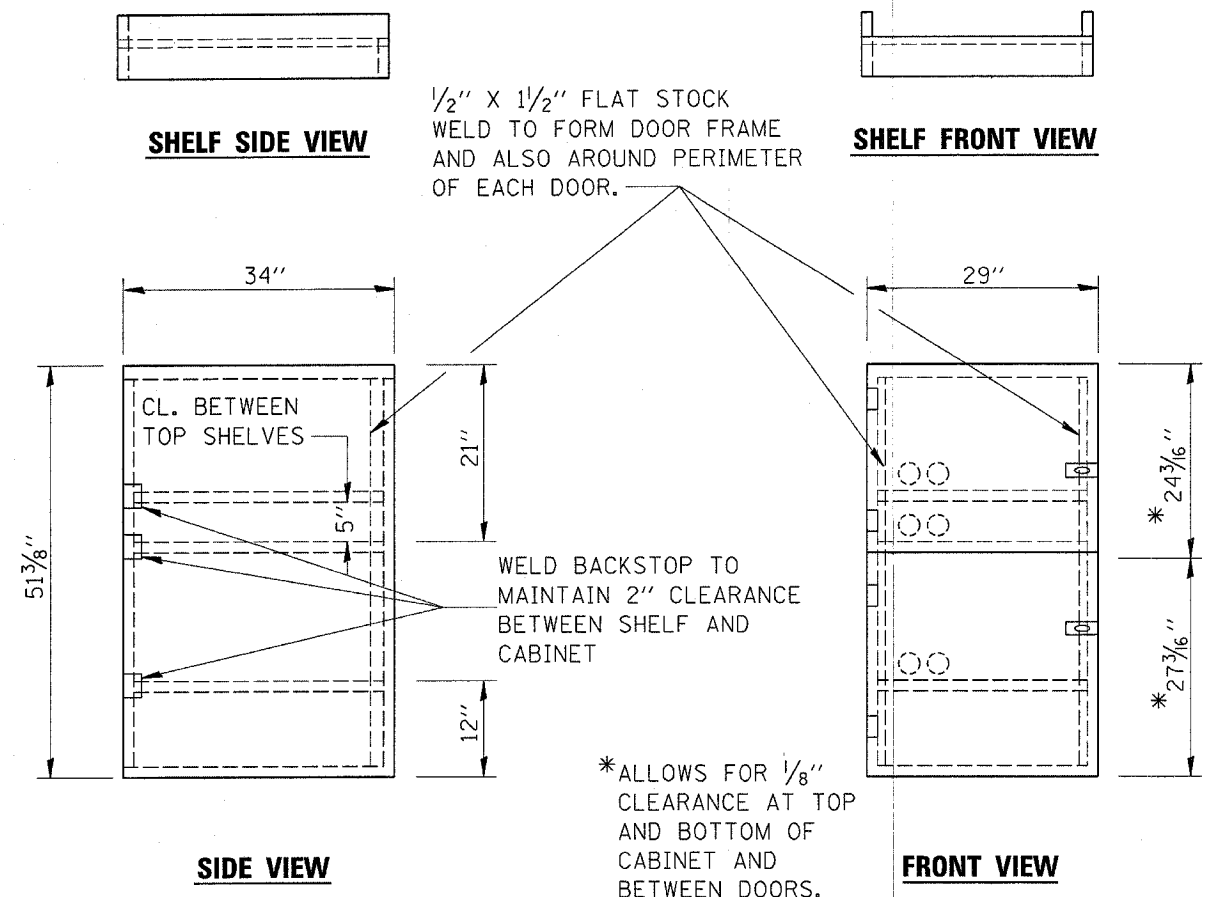
SCALE: VERT. _____
HORIZ. _____

DATE _____

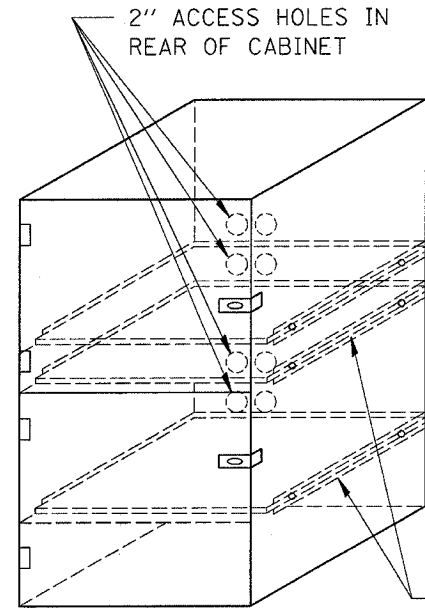
DRAWN BY _____
CHECKED BY _____

4/12/2007 11:20:23 AM c:\projects\ed03904\detail11.s.dgn

F.A.P. RTE.	SECTION	COUNTY	TOTAL SHEETS	SHEET NO.
786	(109,110,111)RS-3	LASALLE	20	20
STA.		TO STA.		
FED. ROAD DIST. NO.		ILLINOIS FED. AID PROJECT		



- NOTES:
1. USE 16 GAUGE STEEL FOR CABINET.
 2. THE TOP SHELF SHALL SLIDE IN OR OUT WITH THE TOP DOOR OPEN.
 3. ALL HINGES AND HASPS WILL BE WELDED TO THE CABINET.
 4. ALL EDGES SHALL BE GROUND SMOOTH.
 5. TWO (2" DIA.) ACCESS HOLES WILL BE REQUIRED FOR EACH SHELF.
 6. CABINET SHALL BE PAINTED WITH TWO COATS OF FLAT PAINT.
 7. 2 EACH MATCHING KEY PADLOCKS, WITH 3 KEYS PROVIDED, MASTER MODEL 3 T OR EQUIVALENT.
 8. 4 EACH PLAIN STEEL, NON-REMOVABLE PIN, NO HOLE 4"x4" SQUARE CORNER HINGES TO BE WELDED ON.
 9. 2 EACH EXTRA HEAVY, PLAIN STEEL, FIXED STAPLE, NO HOLE, 7 1/4 " HASPS TO BE WELDED ON.



FLAT STOCK DIMENSIONS VARY DEPENDING ON TYPE OF ROLLER ASSEMBLY.

LOCKABLE COMPUTER CABINET

REVISIONS		ILLINOIS DEPARTMENT OF TRANSPORTATION
NAME	DATE	
		<p style="text-align: center;">DETAILS</p> <p>SCALE: VERT. DRAWN BY HORIZ. CHECKED BY</p>

4/12/2007 11:20:36 AM c:\projects\ed03904\detail1s.dgn