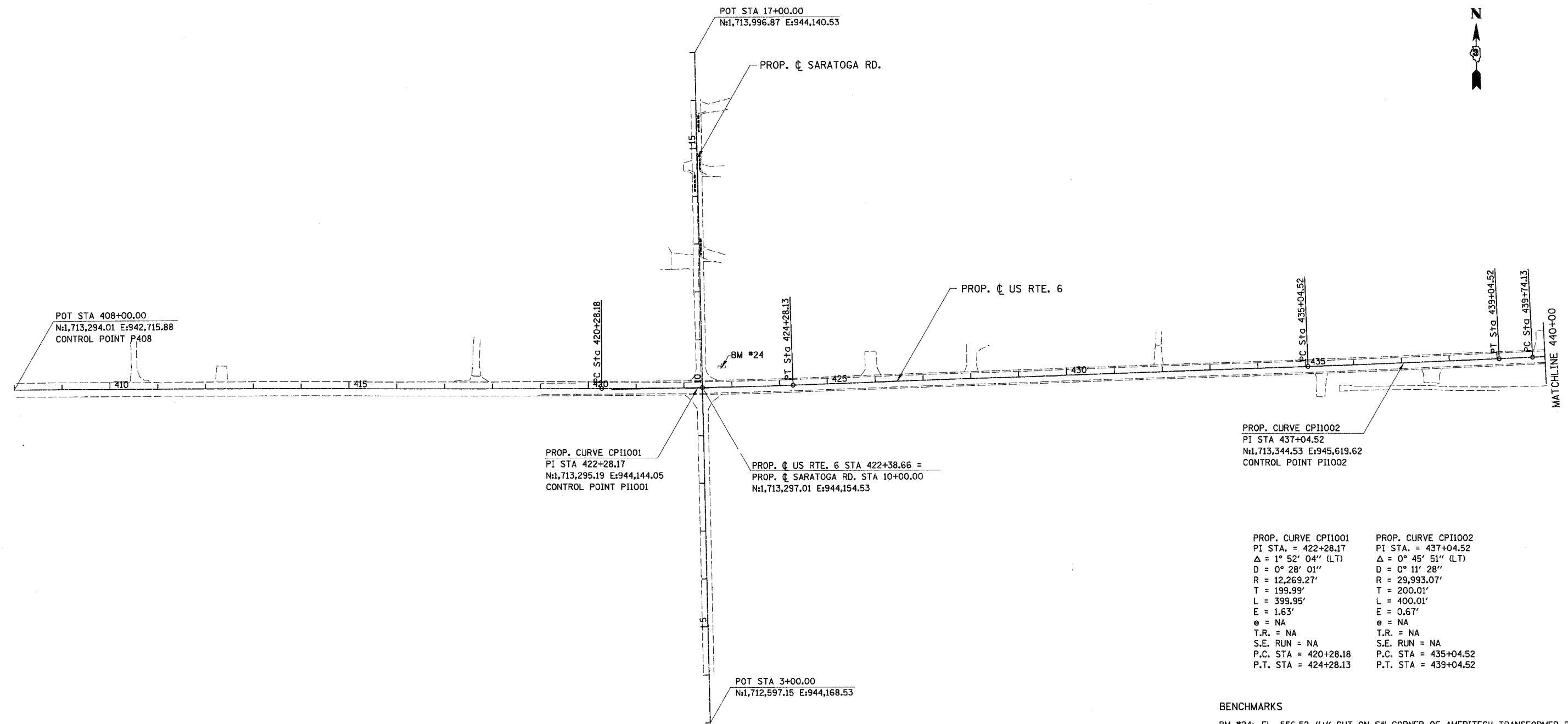


F.A.U. RTE.	SECTION	COUNTY	TOTAL SHEETS	SHEET NO.
5952	Q-BR	GRUNDY	86	11
STA.		TO STA.		
FED. ROAD DIST. NO. 7		ILLINOIS FED. AID PROJECT		



PROP. CURVE CPI1001
 PI STA 422+28.17
 N:1,713,295.19 E:944,144.05
 CONTROL POINT PI1001

PROP. US RTE. 6 STA 422+38.66 =
 PROP. SARATOGA RD. STA 10+00.00
 N:1,713,297.01 E:944,154.53

PROP. CURVE CPI1002
 PI STA 437+04.52
 N:1,713,344.53 E:945,619.62
 CONTROL POINT PI1002

PROP. CURVE CPI1001
 PI STA. = 422+28.17
 $\Delta = 1^\circ 52' 04''$ (LT)
 $D = 0^\circ 28' 01''$
 $R = 12,269.27'$
 $T = 199.99'$
 $L = 399.95'$
 $e = 1.63'$
 $\theta = NA$
 $T.R. = NA$
 $S.E. RUN = NA$
 $P.C. STA = 420+28.18$
 $P.T. STA = 424+28.13$

PROP. CURVE CPI1002
 PI STA. = 437+04.52
 $\Delta = 0^\circ 45' 51''$ (LT)
 $D = 0^\circ 11' 28''$
 $R = 29,993.07'$
 $T = 200.01'$
 $L = 400.01'$
 $e = 0.67'$
 $\theta = NA$
 $T.R. = NA$
 $S.E. RUN = NA$
 $P.C. STA = 435+04.52$
 $P.T. STA = 439+04.52$

BENCHMARKS
 BM #24: EL. 556.52 "4" CUT ON SW CORNER OF AMERITECH TRANSFORMER PAD AT NE CORNER OF RTE. 6 AND SARATOGA RD.

NOTES
 1. ALL COORDINATES ARE IN A LOCAL COORDINATE SYSTEM

REVISIONS		ILLINOIS DEPARTMENT OF TRANSPORTATION
NAME	DATE	
		U.S. ROUTE 6 ALIGNMENT AND TIES

BOWMAN, BARRETT & ASSOCIATES INC.
 CONSULTING ENGINEERS
 130 E. RANDOLPH STREET
 CHICAGO, ILLINOIS 60601
 JOB NO. 541



SCALE: VERT. N.T.S.
 HORIZ. 1"=100'
 DATE 3/19/07
 DRAWN BY RA
 CHECKED BY JD

N:\S\66594\DWG\66594_111111.dwg 3/19/07 4:47:44 PM