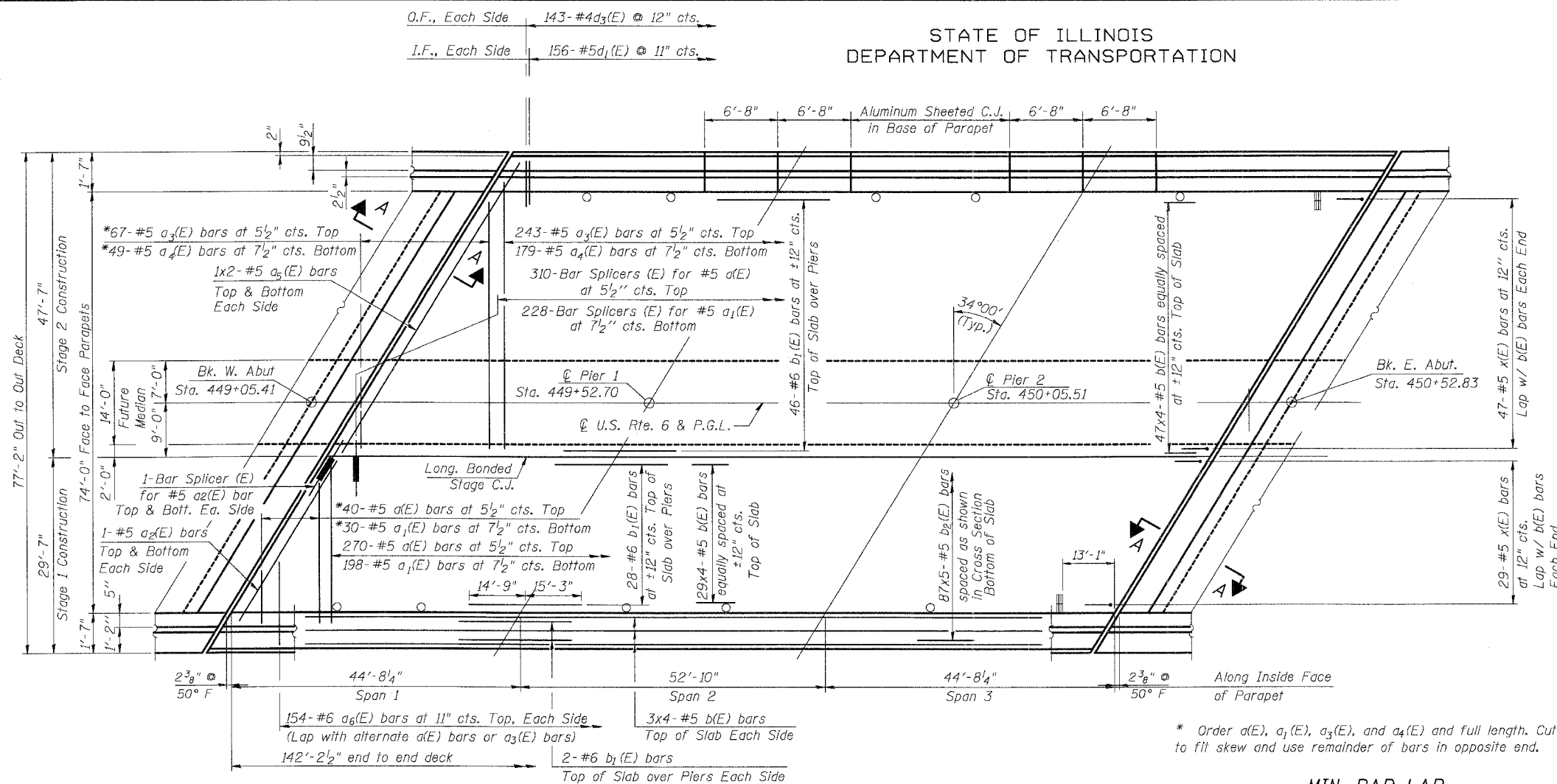


STATE OF ILLINOIS
DEPARTMENT OF TRANSPORTATION

ROUTE NO.	SECTION	COUNTY	SHEET NO.	SHEET	SHEET NO. S9 OF 526 SHEETS
S. B. I.	Q	GRUNDY	86	48	
F. A. U. PROJ.					
FED. ROAD DIST. NO. 7	ILLINOIS	FED. AID PROJECT			

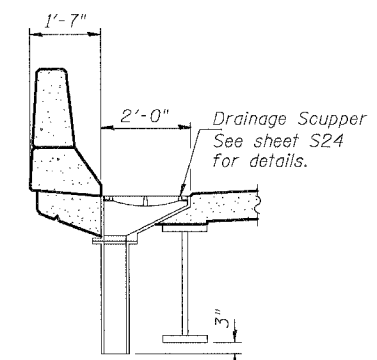
Q-BR



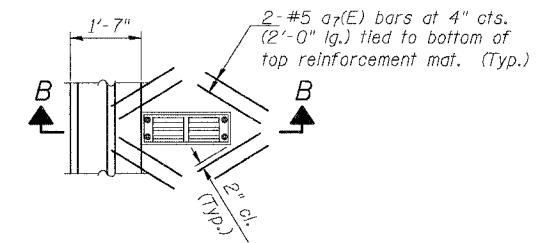
PLAN
O.F. - Outside Face
I.F. - Inside Face

* Order a(E), a₁(E), a₃(E), and a₄(E) and full length. Cut to fit skew and use remainder of bars in opposite end.

MIN. BAR LAP
#5 - 2'-2"

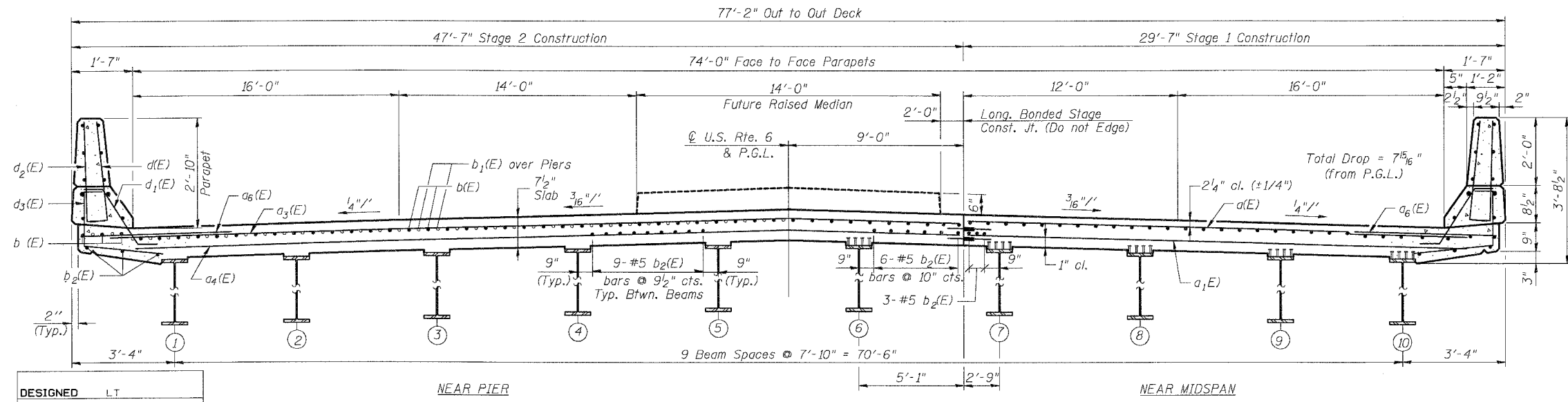


SECTION B-B



PLAN AT SCUPPER

Notes: See Sheet S10 of S25 for Section A-A, superstructure details, parapet reinforcement and Bill of Material.
Reinforcement bars designated (E) shall be epoxy coated.
Bars indicated thus 29 x 3-#5 etc. indicate 29 lines of bars with 3 lengths per line.
Cut Longitudinal bars at scuppers as necessary to provide 2" cl.



CROSS SECTION
(Looking Upstream)

DESIGNED	LT
CHECKED	UM
DRAWN	MTR
CHECKED	BLU

DATE: 3/19/07

BOWMAN, BARRETT & ASSOCIATES INC.
CONSULTING ENGINEERS
130 E. RANDOLPH STREET
CHICAGO, ILLINOIS 60601
JOB NO. 541



SUPERSTRUCTURE PLAN
U.S. ROUTE 6 OVER
NETTLE CREEK
FAU 5952-SEC. Q-BR
GRUNDY COUNTY
STATION 449+79.12
S.N. 032-0107

m:\54\ncadd\bridge\07\brp01.dgn 3/19/2007 12:43:17 PM