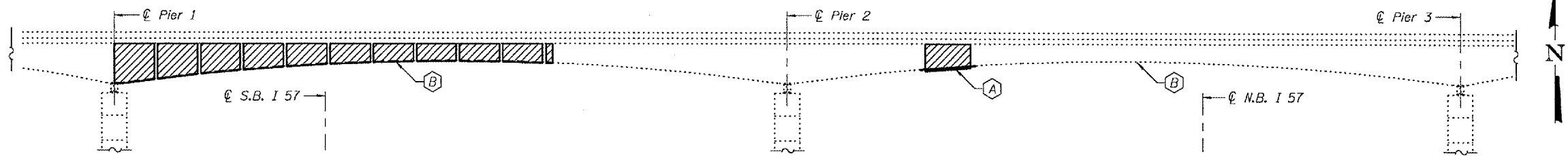


STATE OF ILLINOIS
DEPARTMENT OF TRANSPORTATION

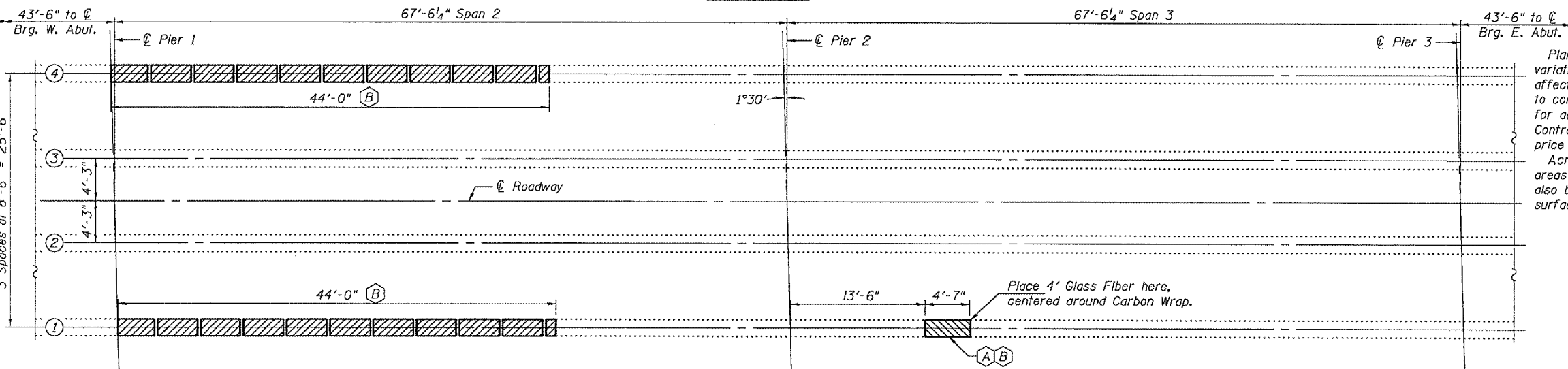
ROUTE NO.	SECTION	COUNTY	TOTAL SHEETS	SHEET NO.
57	46-IH/HRKJI	Kankakee	9	8
FED. ROAD DIST. NO. 7	ILLINOIS	FED. AID PROJECT-		

SHEET NO. 1
2 SHEETS

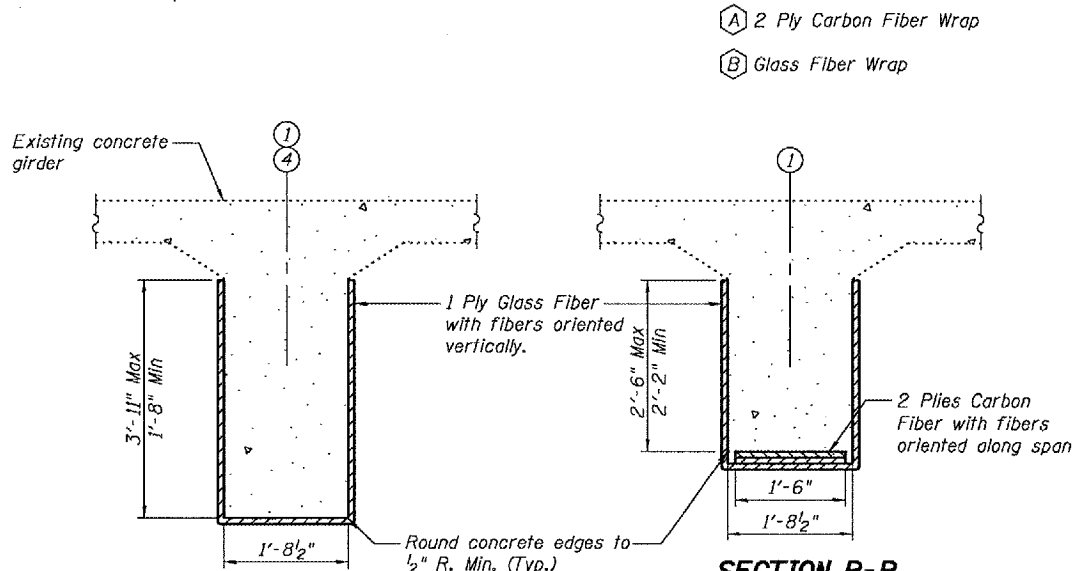
Contract Number: 66699



ELEVATION

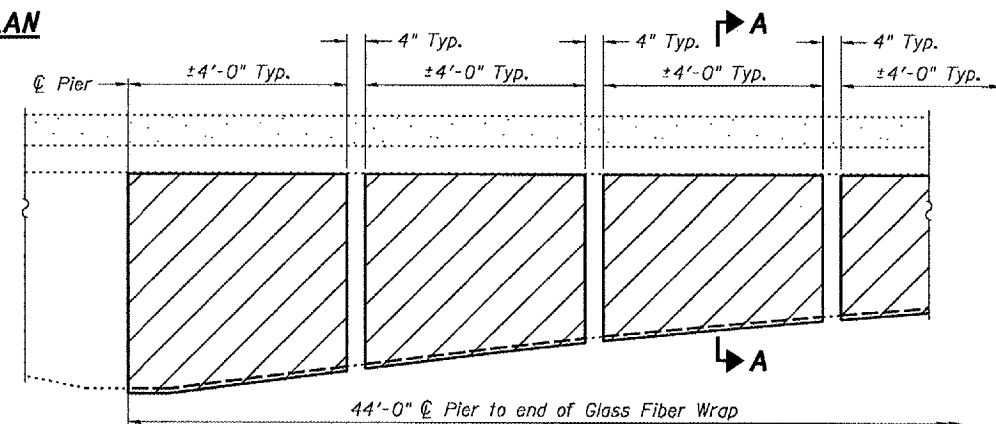


PLAN

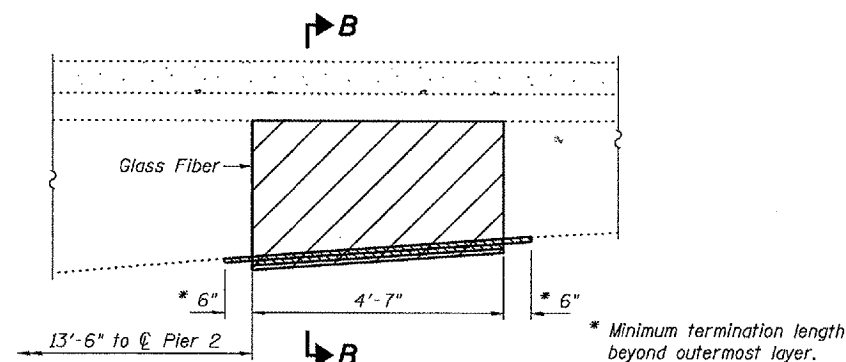


SECTION A-A

SECTION B-B



GLASS FIBER WRAP ELEVATION



CARBON FIBER WRAP ELEVATION

(±17 Sq. Ft. required)

GENERAL NOTES

Plan dimensions and details relative to existing plans are subject to routine variations. The Contractor shall field verify existing dimensions and details affecting new construction and make necessary approved adjustments prior to construction or ordering of materials. Such variations shall not be cause for additional compensation for a change in scope of the work, however, the Contractor will be paid for the quantity actually furnished based upon the unit price bid for the work.
Acrylic coating shall be applied to all surfaces of the fiber wrap. In those areas of the fascia beams where fiber wrap is not applied, acrylic coating shall also be applied to the concrete on the exterior vertical surface and bottom surface.

TOTAL BILL OF MATERIAL

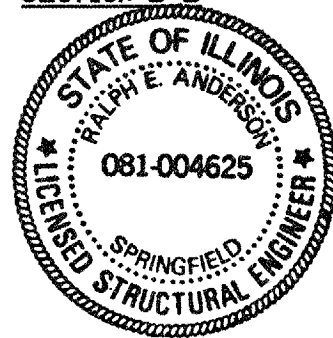
ITEM	UNIT	QUANTITY
Fiber Wrap	Sq. Ft.	604
Acrylic Coating	Sq. Yd.	249
Structural Repair of Concrete (Depth Equal to or Less Than 5')	Sq. Ft.	35
Structural Repair of Concrete (Depth Greater Than 5')	Sq. Ft.	10

MINIMUM CURED LAMINATE PROPERTIES

CARBON FIBER	GLASS FIBER
$T_{fu} = 100,000$ psi	$T_{fu} = 77,000$ psi
$E_f = 9,400,000$ psi	$E_f = 3,400,000$ psi
Ply thickness = 0.04"	Ply thickness = 0.04"

PLAN, ELEVATION
AND DETAILS
F.A.I. RT.57
KANKAKEE COUNTY
SN 046-0086

DESIGNED: *[Signature]*
CHECKED: *[Signature]*
DRAWN: *[Signature]*
CHECKED: S.S.B.
EXAMINED: *[Signature]*
PASSED: *[Signature]*
MAY 9, 2007
ENGINEER OF BRIDGES AND STRUCTURES



Expires: November 30, 2008