

F.A.I. RTE.	SECTION	COUNTY	TOTAL SHEETS	SHEET NO.
55	53(6HB-1,6B)BP	LIVINGSTON	15	1
ILLINOIS				

INDEX OF SHEETS

1. COVER SHEET
2. GENERAL NOTES
3. SUMMARY OF QUANTITIES
4. TYPICAL SECTIONS
5. SCHEDULES
6. TRAFFIC CONTROL AND PROTECTION, STANDARD 701402 (SPECIAL)
7. TEMPORARY CONCRETE BARRIER DETAILS, BRIDGE LOCATION NO. 1
8. TEMPORARY CONCRETE BARRIER DETAILS, BRIDGE LOCATION NO. 2 AND 3
- 9 - 11. EXISTING STRUCTURE DETAILS, BRIDGE LOCATION NO. 1
- 12 - 15. EXISTING STRUCTURE DETAILS, BRIDGE LOCATION NO. 2 AND 3

STANDARDS

- | | |
|-----------|---|
| 000001-04 | STANDARD SYMBOLS, ABBREVIATIONS AND PATTERNS |
| 635011-01 | REFLECTOR MARKER AND MOUNTING DETAILS |
| 701011-01 | OFF-ROAD MOVING OPERATIONS 2L, 2W, DAY ONLY |
| 701101-01 | OFF-ROAD OPERATIONS MULTILANE, 4.5 m (15') TO 600 mm (24") FROM PAVEMENT EDGE |
| 701301-02 | LANE CLOSURE, 2L, 2W, SHORT TIME OPERATIONS |
| 701400-02 | APPROACH TO LANE CLOSURE, FREEWAY/EXPRESSWAY |
| 701402-05 | LANE CLOSURE, FREEWAY/EXPRESSWAY, WITH BARRIER |
| 702001-06 | TRAFFIC CONTROL DEVICES |
| 704001-03 | TEMPORARY CONCRETE BARRIER |

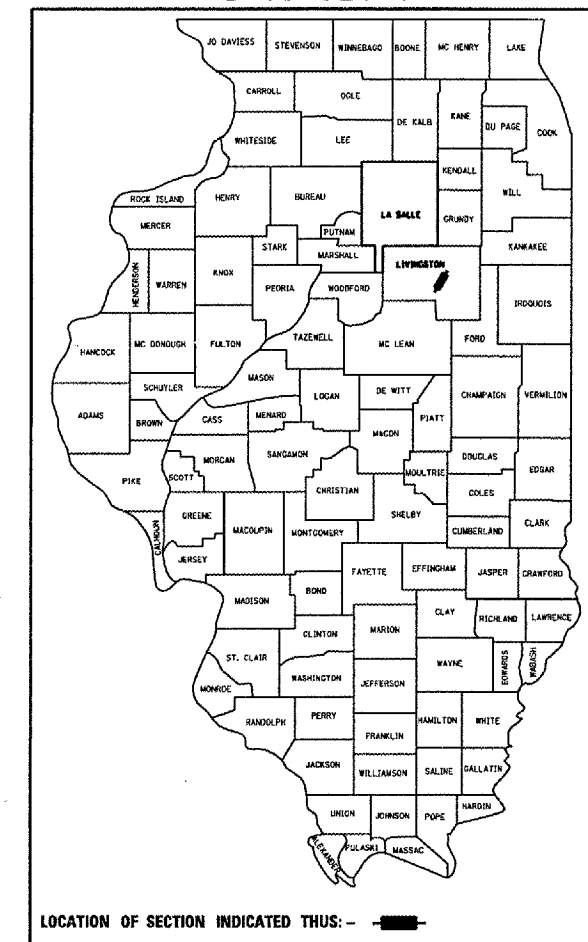
**STATE OF ILLINOIS
DEPARTMENT OF TRANSPORTATION**

**DIVISION OF HIGHWAYS
PROPOSED
HIGHWAY PLANS**

**FAI ROUTE 55 (I-55)
SECTION: 53(6HB-1,6B)BP**

**LIVINGSTON COUNTY
C-93-056-07
BRIDGE PAINTING**

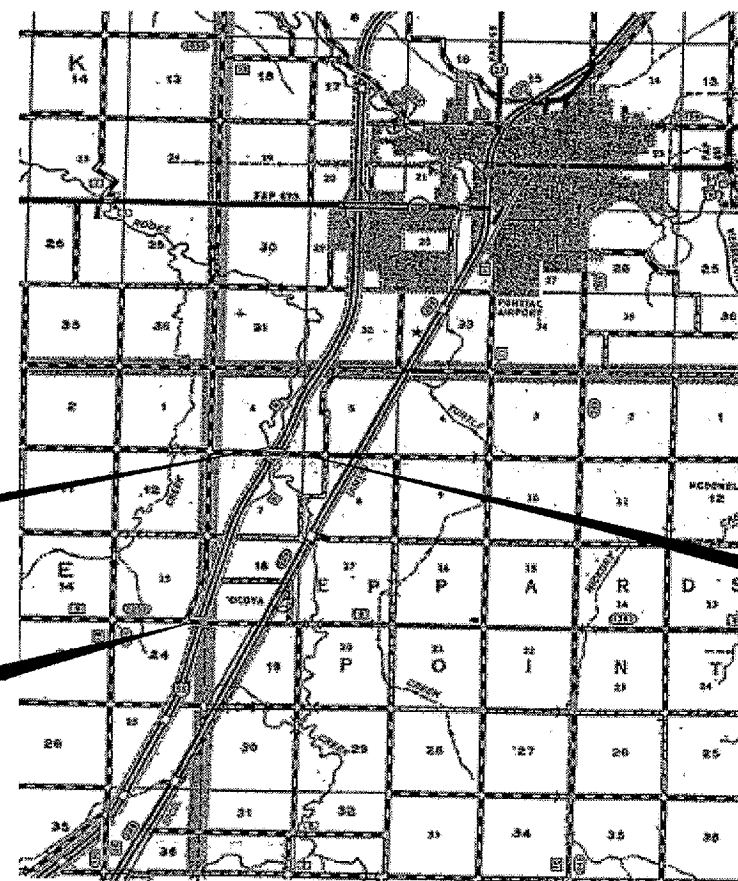
D-93-026-07



FUNCTIONAL CLASSIFICATION

RURAL - INTERSTATE
F.A.I. ROUTE 55 (I-55)
2005 ADT = 21500

P.V. = 72.3% M.U. = 22.3% S.U. = 5.4%



BRIDGE LOCATION NO. 2 SN 053-0124 (SB)
SECTION 53-6B
CARRYING FAI 55 (SB) OVER ROOKS CREEK
3.25 MILES SOUTH OF IL ROUTE 116 (PONTIAC)

BRIDGE LOCATION NO. 1 SN 053-0122
SECTION 53-6HB-1
CARRYING C.H. 8 OVER FAI ROUTE 55
5.37 MILES SOUTH OF IL ROUTE 116 (PONTIAC)

BRIDGE LOCATION NO. 3 SN 053-0125 (NB)
SECTION 53-6B
CARRYING FAI 55 (NB) OVER ROOKS CREEK
3.25 MILES SOUTH OF IL ROUTE 116 (PONTIAC)

MICROFILMED _____
REEL NUMBER _____
AWARDED _____
RESIDENT ENGINEER _____
AS BUILT CHANGES WERE MADE
ON THE FOLLOWING SHEETS _____

J.U.L.I.E.
JOINT UTILITY LOCATION INFORMATION FOR EXCAVATION
1-800-892-0123

DISTRICT NO. 3 815-434-6131

PROJECT ENGINEER: JOE KANNEL
UNIT CHIEF: RON WOODSHANK
TOWNSHIP: EPPARD POINT

CONTRACT NO. 66714

STATE OF ILLINOIS
DEPARTMENT OF TRANSPORTATION
DIVISION OF HIGHWAYS

SUBMITTED April 2 2007
George Ragan
DEPUTY DIRECTOR OF HIGHWAYS, REGION ENGINEER

May 11 20 07
Eric E. Harn
INTERIM ENGINEER OF DESIGN AND ENVIRONMENT

May 11 20 07
Milton R. Soos, P.E.
DIRECTOR OF HIGHWAYS, CHIEF ENGINEER

**PRINTED BY THE AUTHORITY
OF THE STATE OF ILLINOIS**

F.A.I. RTE.	SECTION	COUNTY	TOTAL SHEETS	SHEET NO.
55	53(6HB-1,6B)BP	LIVINGSTON	15	2
ILLINOIS				

GENERAL NOTES:

Plan dimensions and details relative to the existing roadway and structure have been taken from existing plans and are subject to nominal construction variations. It shall be the contractor's responsibility to verify such dimensions and details in the field and to make necessary approved adjustments prior to construction or ordering of materials. Such variations shall not be cause for additional compensation for a change in the scope of the work, however, the contractor will be paid for the quantity actually furnished at the unit price bid for the work.

The contractor shall be responsible for protecting utility property from construction operations as outlined in Article 107.31 of the Standard Specifications. The "Julie" Number is 1-800-892-0123. A minimum of forty-eight (48) hours advance notice is required.

For stabilization, all Type II barricades and Direction Indicator barricades shall require a minimum of four sand bags per barricade.

Where section or subsection monuments are encountered, the engineer shall be notified before such monuments are removed. The contractor shall protect and carefully preserve all monuments until an authorized surveyor or agent has witnessed or otherwise referenced their location. The contractor shall be responsible for having an authorized surveyor reestablish any section or subsection monuments destroyed by his operations.

Any reference to a standard in these plans shall be interpreted to mean the edition as indicated by the subnumber listed on the index of sheets or the copy of the standard included in these plans.

The contractor shall be required to secure and waste containers that remain on the job site. This will entail that all waste containers can not be moved or opened during non-working hours.

Working days shall be charged until the contractor/subcontractor licensed to dispose of lead paint residue has removed the waste material from the job site according to all Federal, State and Local Laws and Ordinances.

The existing structural steel coating contains lead. The Contractor should take appropriate precautions to deal with the presence of lead on this project.

The SSPC-QP1 and SSPC-QP2 Painting Contractor Certifications will be required for this project.

Locations 1: SN 053-0122

Cleaning and painting of the existing structural steel shall be as specified in the special provision for "Cleaning and Painting Existing Steel Structures". All exterior surfaces of the steel box beams and diaphragms shall be cleaned per Near White Blast Cleaning - SSPC-SP10. All existing steel shall be painted according to the requirements of Paint System 1 - OZ/E/U. The color of the final finish coat for all steel surfaces shall be Reddish Brown, Munsell No 2.5YR 3/4.

In addition all existing steel surfaces inside the box beams within a distance of ten (10) feet of the ends of the beams shall be cleaned per Near White Blast Cleaning - SSPC-SP10. This existing steel shall be painted according to the requirements of Paint System 1 - OZ/E/U. The color of the final finish coat for these steel surfaces shall be Gray, Munsell No 5B 7/1.

The ends of the beams are currently moisture sealed, in the event that the seals are damaged or removed due to the Contractor cleaning operation, the seals shall be replaced according to 1050.02 of the Standard Specifications and as directed by the Engineer.

Locations 2 & 3: SN 053-0124 & 053-0125

Cleaning and painting of the existing structural steel shall be as specified in the special provision for "Cleaning and Painting Existing Steel Structures". All existing steel shall be cleaned per Near White Blast Cleaning - SSPC-SP10. All existing steel shall be painted according to the requirements of Paint System 1 - OZ/E/U. The color of the final finish coat for all interior steel surfaces shall be Gray, Munsell No 5B 7/1. The color of the final finish coat for the exterior and bottom flange of the fascia beams shall be Reddish Brown, Munsell No 2.5YR 3/4.

DATE: 4.2.07
 PREPARED BY: Rick Pavell
 DISTRICT STUDIES & PLANS ENGINEER
 EXAMINED BY: Hubert [Signature]
 DISTRICT CONSTRUCTION ENGINEER
[Signature]
 DISTRICT MATERIALS ENGINEER
[Signature]
 DISTRICT OPERATIONS ENGINEER

REVISIONS		ILLINOIS DEPARTMENT OF TRANSPORTATION
NAME	DATE	
		GENERAL NOTES FAI ROUTE 55 (I-55) SECTION 53(6HB-1,6B)BP LIVINGSTON COUNTY SN 053-0122, SN 053-0124 (SB), SN 053-0125 (NB)

Date: 03/12/2007 project/cr/br/16/epoint_07/053-0124 & 5.dgn

F.A.I. RTE.	SECTION	COUNTY	TOTAL SHEETS	SHEET NO.
55	53(6HB-1,6B)BP	LIVINGSTON	15	3
ILLINOIS				

SUMMARY OF QUANTITIES

CONSTRUCTION CODE: SFTY-2A

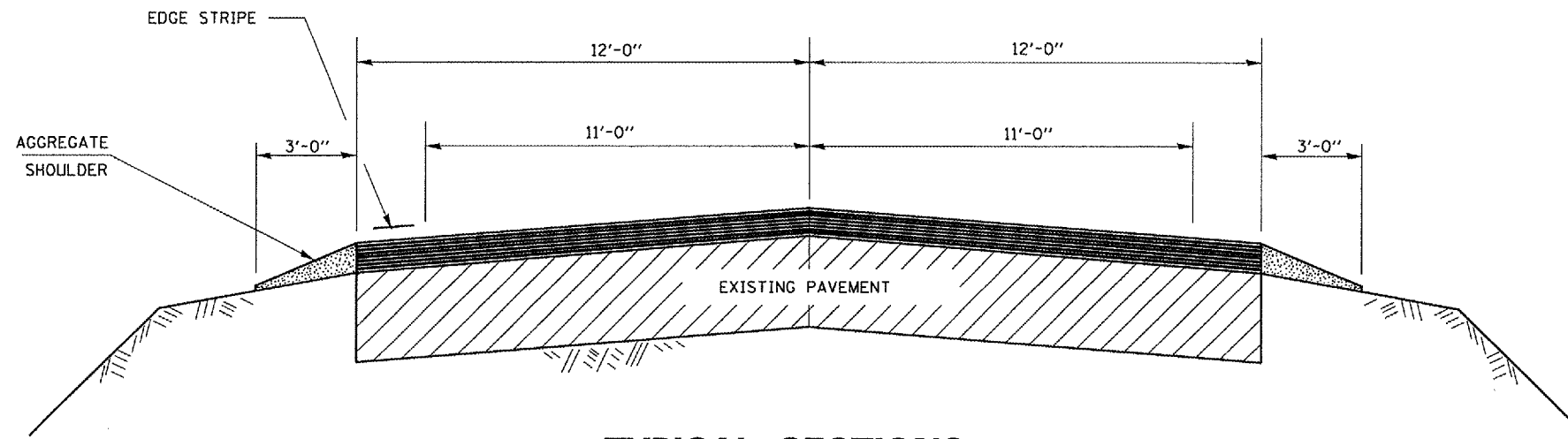
CODE NO.	ITEM	UNIT	TOTAL QUANTITY	RURAL 100% STATE	
				SEC 53-6HB-1	SEC 53-6B
50600600	CLEANING AND PAINTING STEEL BRIDGE NO. 1	L SUM	1	1	
50600700	CLEANING AND PAINTING STEEL BRIDGE NO. 2	L SUM	1		1
50600800	CLEANING AND PAINTING STEEL BRIDGE NO. 3	L SUM	1		1
50606401	CONTAINMENT AND DISPOSAL OF LEAD PAINT CLEANING RESIDUES NO.1	L SUM	1	1	
50606402	CONTAINMENT AND DISPOSAL OF LEAD PAINT CLEANING RESIDUES NO.2	L SUM	1		1
50606403	CONTAINMENT AND DISPOSAL OF LEAD PAINT CLEANING RESIDUES NO.3	L SUM	1		1
67100100	MOBILIZATION	L SUM	1	0.25	0.75
70101605	TRAFFIC CONTROL AND PROTECTION, STANDARD 701402 (SPECIAL)	EACH	3	1	2
70400100	TEMPORARY CONCRETE BARRIER	FOOT	1580	600	980
70400200	RELOCATE TEMPORARY CONCRETE BARRIER	FOOT	1580	600	980
X5067501	BRIDGE CLEANING AND PAINTING WARRANTY NUMBER 1	L SUM	1	1	
X5067502	BRIDGE CLEANING AND PAINTING WARRANTY NUMBER 2	L SUM	1		1
X5067503	BRIDGE CLEANING AND PAINTING WARRANTY NUMBER 3	L SUM	1		1
Z0030250	IMPACT ATTENUATORS, TEMPORARY (NON-REDIRECTIVE), TEST LEVEL 3	EACH	4	2	2
Z0030350	IMPACT ATTENUATORS, RELOCATE (NON-REDIRECTIVE), TEST LEVEL 3	EACH	4	2	2

REVISIONS	
NAME	DATE

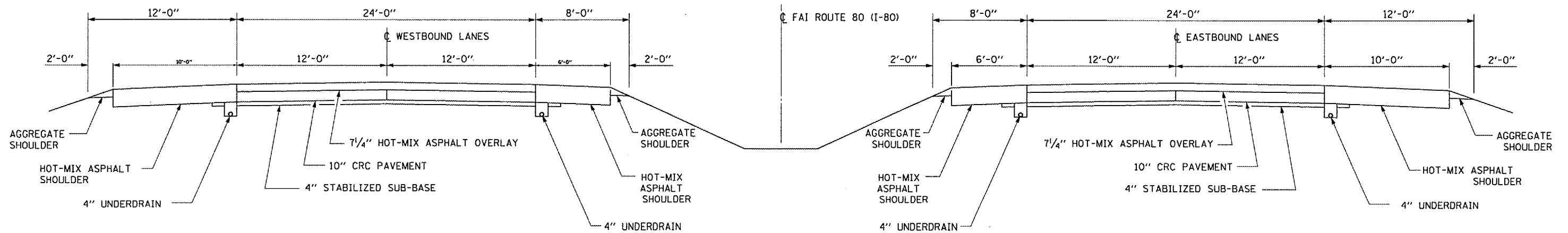
ILLINOIS DEPARTMENT OF TRANSPORTATION
SUMMARY OF QUANTITIES
 FAI ROUTE 55 (I-55) SECTION 53(6HB-1,6B)BP
 LIVINGSTON COUNTY
 SN 053-0122, SN 053-0124 (SB), SN 053-0125 (NB)

Date: 03/12/2007
Project: cr/bridgepaint.07/053-0124 & 5.dgn

F.A.I. RTE.	SECTION	COUNTY	TOTAL SHEETS	SHEET NO.
55	53(6HB-1,6B)BP	LIVINGSTON	15	4
ILLINOIS				



TYPICAL SECTIONS
CH 8



TYPICAL SECTIONS
FAI 55

REVISIONS	
NAME	DATE

ILLINOIS DEPARTMENT OF TRANSPORTATION

TYPICAL SECTIONS

FAI ROUTE 55 (I-55) SECTION 53(6HB-1,6B)BP
LIVINGSTON COUNTY
SN 053-0122, SN 053-0124 (SB), SN 053-0125 (NB)

F.A.I. RTE.	SECTION	COUNTY	TOTAL SHEETS	SHEET NO.
55	5316HB-1,6B1BP	LIVINGSTON	15	5
ILLINOIS				

CLEANING AND PAINTING SCHEDULE

LOCATION	CLEANING AND PAINTING STEEL BRIDGE NO. 1	CLEANING AND PAINTING STEEL BRIDGE NO. 2	CLEANING AND PAINTING STEEL BRIDGE NO. 3
	L SUM	L SUM	L SUM
SECTION 53-5HB-1 SECTION 53-6B	1	1	1
TOTAL	1	1	1

CONTAINMENT AND DISPOSAL SCHEDULE

LOCATION	CONTAINMENT AND DISPOSAL OF LED PAINT CLEANING RESIDUES NO. 1	CONTAINMENT AND DISPOSAL OF LED PAINT CLEANING RESIDUES NO. 2	CONTAINMENT AND DISPOSAL OF LED PAINT CLEANING RESIDUES NO. 3
	L SUM	L SUM	L SUM
SECTION 53-5HB-1 SECTION 53-6B	1	1	1
TOTAL	1	1	1

WARRANTY SCHEDULE

LOCATION	BRIDGE CLEANING AND PAINTING WARRANTY NO. 1	BRIDGE CLEANING AND PAINTING WARRANTY NO.2	BRIDGE CLEANING AND PAINTING WARRANTY NO. 3
	L SUM	L SUM	L SUM
SECTION 53-5HB-1 SECTION 53-6B	1	1	1
TOTAL	1	1	1

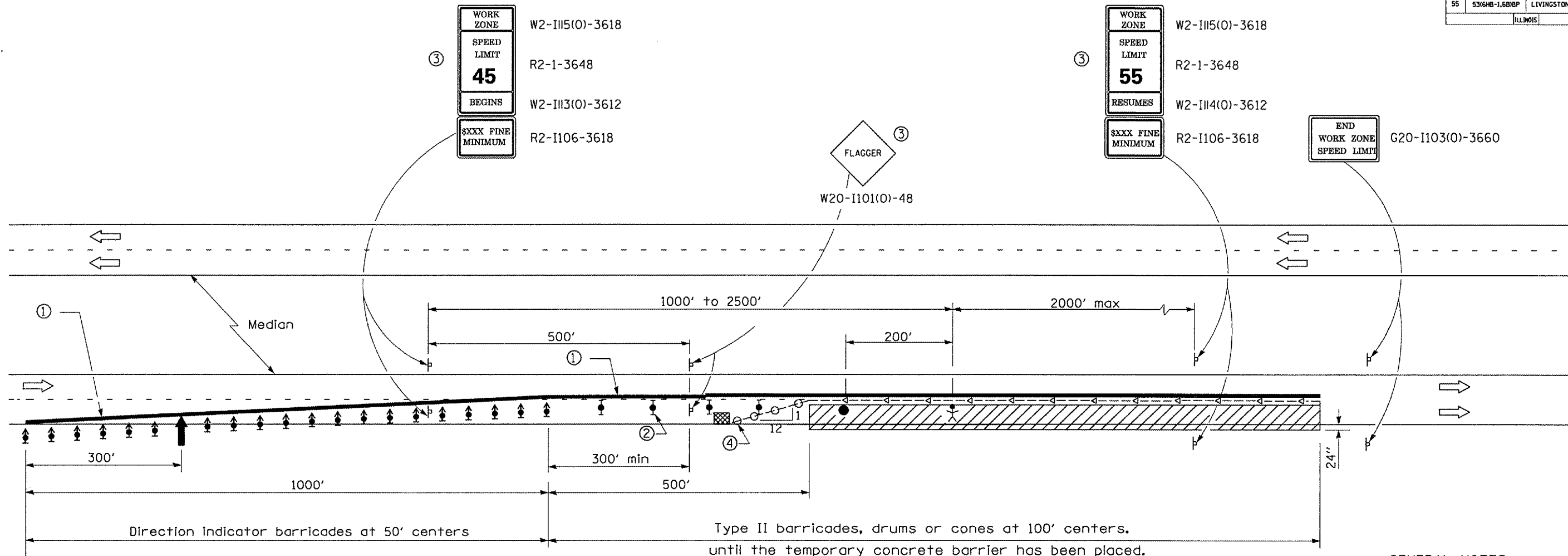
PAINTING SCHEDULE

LOCATION	TRAFFIC CONTROL AND PROTECTION STANDARD 701402 (SPECIAL)	TEMPORARY CONCRETE BARRIER	RELOCATE TEMPORARY CONCRETE BARRIER	IMPACT ATTENUATORS TEMPORARY (NON-REDIRECTIVE) TEST LEVEL 3	IMPACT ATTENUATORS RELOCATE (NON-REDIRECTIVE) TEST LEVEL 3
	EACH	FOOT	FOOT	EACH	EACH
SECTION 53-5HB-1 SECTION 53-6B	2	520	520	2	2
	2	980	980	2	2
TOTAL	4	1500	1500	4	4

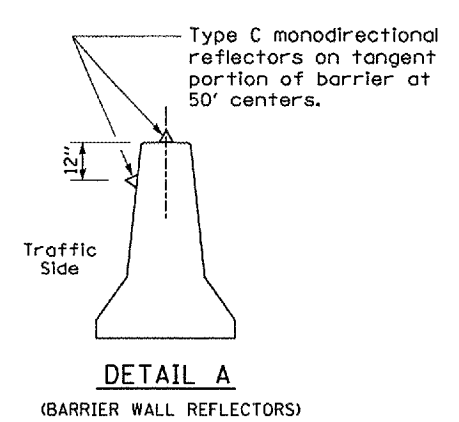
REVISIONS	
NAME	DATE

ILLINOIS DEPARTMENT OF TRANSPORTATION
SCHEDULES
FAI ROUTE 55 (I-55) SECTION 53(6HB-1,6B)BP
LIVINGSTON COUNTY
SN 053-0122, SN 053-0124 (SB), SN 053-0125 (NB)

F.A.I. RTE.	SECTION	COUNTY	TOTAL SHEETS	SHEET NO.
55	53(6HB-1,6B)BP	LIVINGSTON	15	6
ILLINOIS				



See Standard 701400 for approach Start of lane closure taper



SYMBOLS

- Arrow board
- Work area
- Worker
- Sign
- Direction indicator barricade with steady burn monodirectional light
- Type II barricade, drum, or vertical barricade with steady burn monodirectional light
- Flagger with traffic control sign
- Temporary concrete barrier
- Type C Monodirectional reflector
- Vertical panel with steady burn monodirectional light.
- Impact attenuator

- ① ReflectORIZED temporary pavement marking tape shall be placed throughout the taper and alongside the temporary concrete barrier. The edge line shall be white for right lane closure and yellow for left lane closures. Temporary raised reflectORIZED pavement markers at 25' centers shall be used to supplement the pavement marking tape.
- ② Type II barricades, drums or cones shall be used alongside the tangent portion of the work zone to provide protection during the installation of the temporary concrete barrier.
- ③ Work Zone speed limit signs and Flagger signs shall be covered after the temporary concrete barrier is in place and uncovered when the temporary concrete barrier is removed or relocated and replaced with Type II barricades, drums or cones to maintain the lane closure. The additional drums, Type II barricades or cones, required shall be included in the cost of Traffic Control and Protection, Standard 701402 (Special).
- ④ Vertical panels at 25' centers with steady burning monodirectional lights.

GENERAL NOTES

This Standard is used where at any time any vehicle, equipment, workers or their activities will encroach on the lane adjacent to the shoulder, or on the shoulder within 24" of the edge of pavement whenever temporary concrete barrier is warranted.

This Standard must always be used in combination with Standard 701400.

This Standard also applies when work is being performed in the left lane. Under these conditions, the set up would be a mirror image to what is shown.

A check barricade shall be placed in the middle of the closed lane and at the shoulder at 1000' centers.

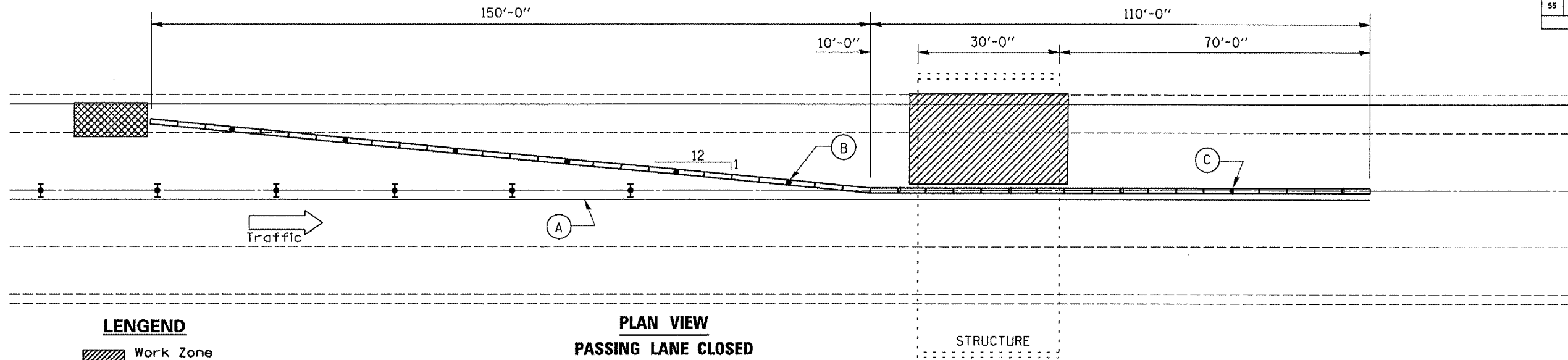
The cost of materials, equipment and labor to utilize this traffic control and protection as shown will be paid for at the contract unit bid price for TRAFFIC CONTROL AND PROTECTION, STANDARD 701402 (SPECIAL) and no further compensation will be allowed.

Temporary concrete barrier shall be paid for according to Section 704 of the Standard Specifications.

REVISIONS	
NAME	DATE

ILLINOIS DEPARTMENT OF TRANSPORTATION
TRAFFIC CONTROL AND PROTECTION
STANDARD 701402 (SPECIAL)
 FAI ROUTE 55 (I-55) SECTION 53(6HB-1,6B)BP
 LIVINGSTON COUNTY
 SN 053-0122, SN 053-0124 (SB), SN 053-0125 (NB)

F.A.I. RTE.	SECTION	COUNTY	TOTAL SHEETS	SHEET NO.
55	53(6HB-1,6B)BP	LIVINGSTON	15	7
ILLINOIS				

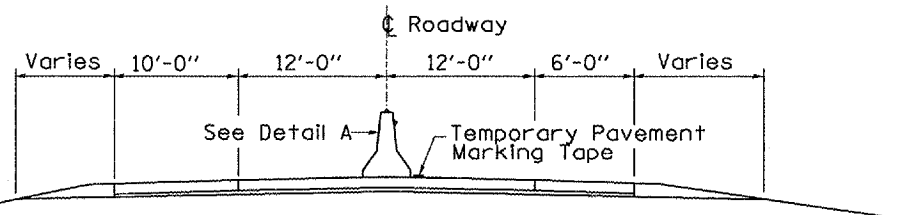


LENGEND

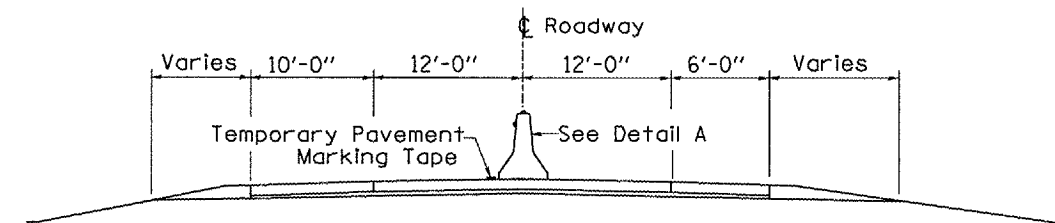
- Work Zone
- Type II barricade, drum or vertical barricade with steady burn monodirectional light
- Temporary concrete barrier
- Impact attenuator

**PLAN VIEW
PASSING LANE CLOSED**

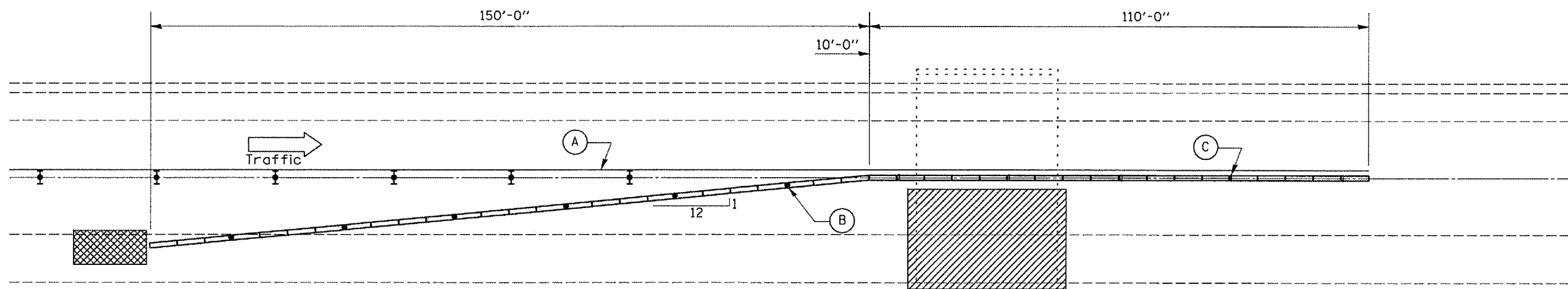
STRUCTURE



**ROADWAY SECTION
PASSING LANE CLOSED**



**ROADWAY SECTION
DRIVING LANE CLOSED**



**PLAN VIEW
DRIVING LANE CLOSED**

STRUCTURE

- (A) Reflectorized temporary pavement marking tape shall be placed throughout the taper and along side the work area. The edge line shall be white for right lane closure.
- (B) Vertical panels at 25' centers with steady burning
- (C) Type "C" monodirectional reflector

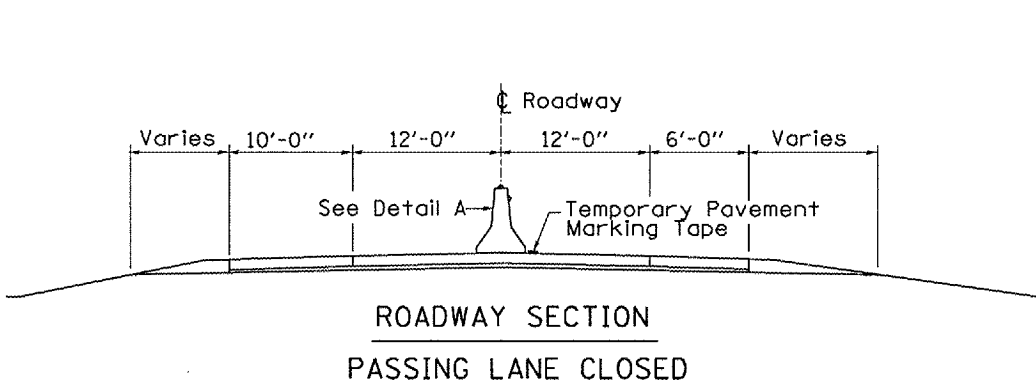
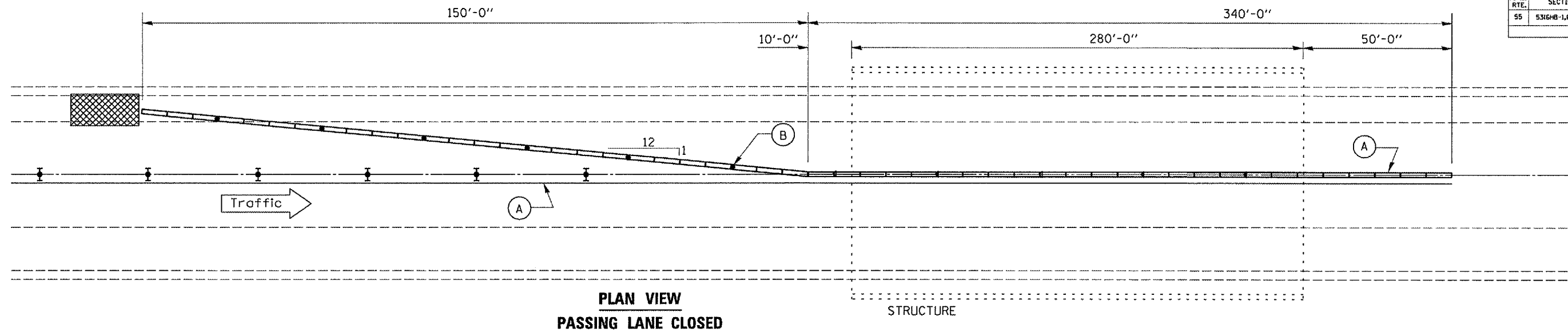
REVISIONS	
NAME	DATE

ILLINOIS DEPARTMENT OF TRANSPORTATION
TEMPORARY CONCRETE BARRIER DETAILS
BRIDGE LOCATION NO. 1
 FAI ROUTE 55 (I-55) SECTION 53(6HB-1,6B)BP
 LIVINGSTON COUNTY
 SN 053-0122, SN 053-0124 (SB), SN 053-0125 (NB)

Work this sheet with Traffic Control Standards 701402

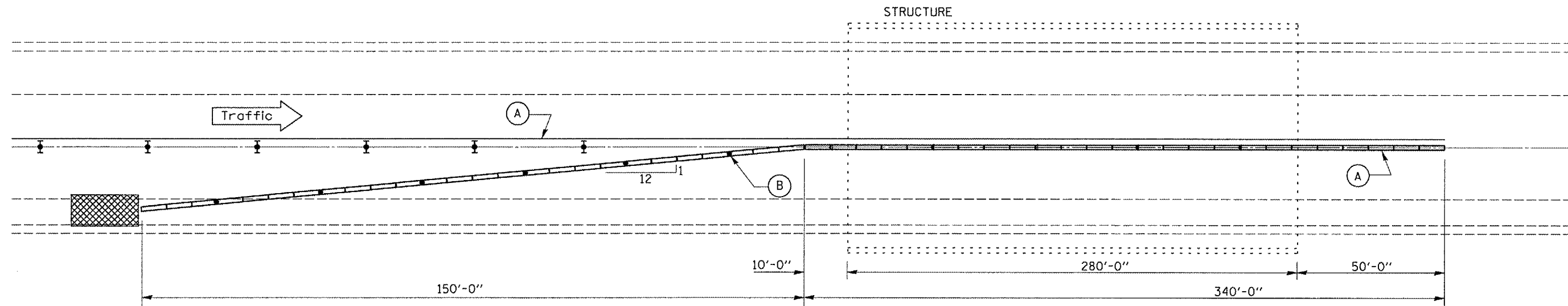
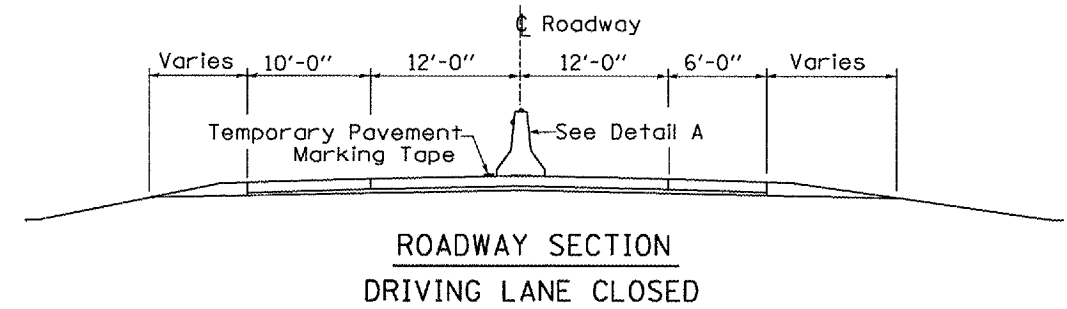
Date: 03/12/2007
 projector:bridgepaint_07/053-0124 & 5.dgn

F.A.I. RTE.	SECTION	COUNTY	TOTAL SHEETS	SHEET NO.
55	53(6HB-1,6B)BP	LIVINGSTON	15	8
ILLINOIS				



LENGEND

- Work Zone
- Type II barricade, drum or vertical barricade with steady burn monodirectional light
- Temporary concrete barrier
- Impact attenuator



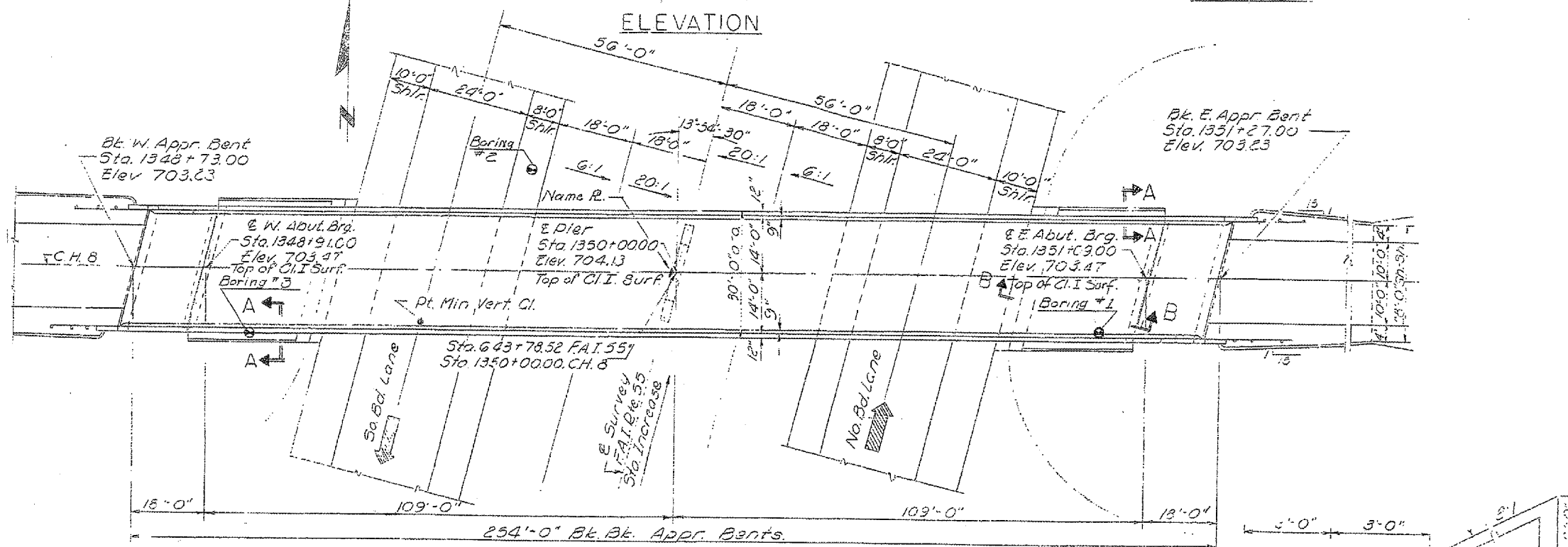
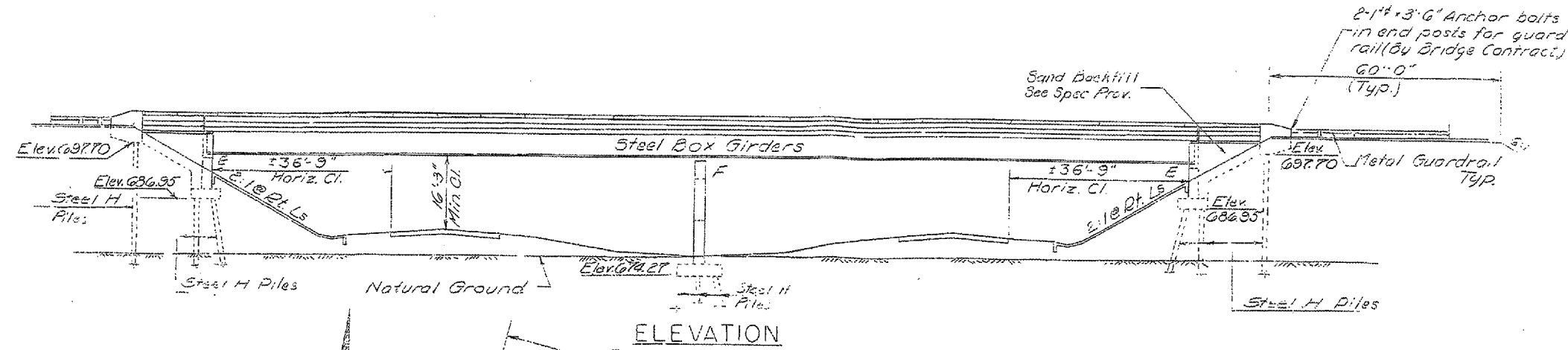
- (A) ReflectORIZED temporary pavement marking tape shall be placed throughout the taper and along side the work area. The edge line shall be white for right lane closure.
- (B) Vertical panels at 25' centers with steady burning
- (C) Type "C" monodirectional reflector

REVISIONS	
NAME	DATE

ILLINOIS DEPARTMENT OF TRANSPORTATION
TEMPORARY CONCRETE BARRIER DETAILS
BRIDGE LOCATION NO. 2 AND 3
 FAI ROUTE 55 (I-55) SECTION 53(6HB-1,6B)BP
 LIVINGSTON COUNTY
 SN 053-0122, SN 053-0124 (SB), SN 053-0125 (NB)

Work this sheet with Traffic Control Standards 701402

F.A.I. RTE.	SECTION	COUNTY	TOTAL SHEETS	SHEET NO.
55	53(6HB-1,6B)BP	LIVINGSTON	15	9



DESIGN STRESSES

- $f_c = 1200$ psi. Deck Slab
 - $f_c = 1400$ psi. Curb, Parapet, Sub. & Appr. Slab
 - $f_s = 20,000$ psi. Reinforcing Steel
 - $f_s = 20,000$ psi. Structural Steel
 - $V_c = 75$ psi. Footings
 - $n = 10$
- Allowable Fut. w. s. $25^{\#}/15q. Ft.$

PLAN

STATION 643+78.52
 BUILT 197 BY
 STATE OF ILLINOIS
 F.A.I. RT. 55 SEC. 53(6HB-1)
 PROJ. I-55-5(41)
 LOADING H3 15

NAME PLATE
 (See Std. C113)

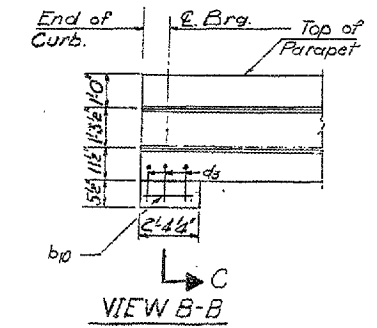
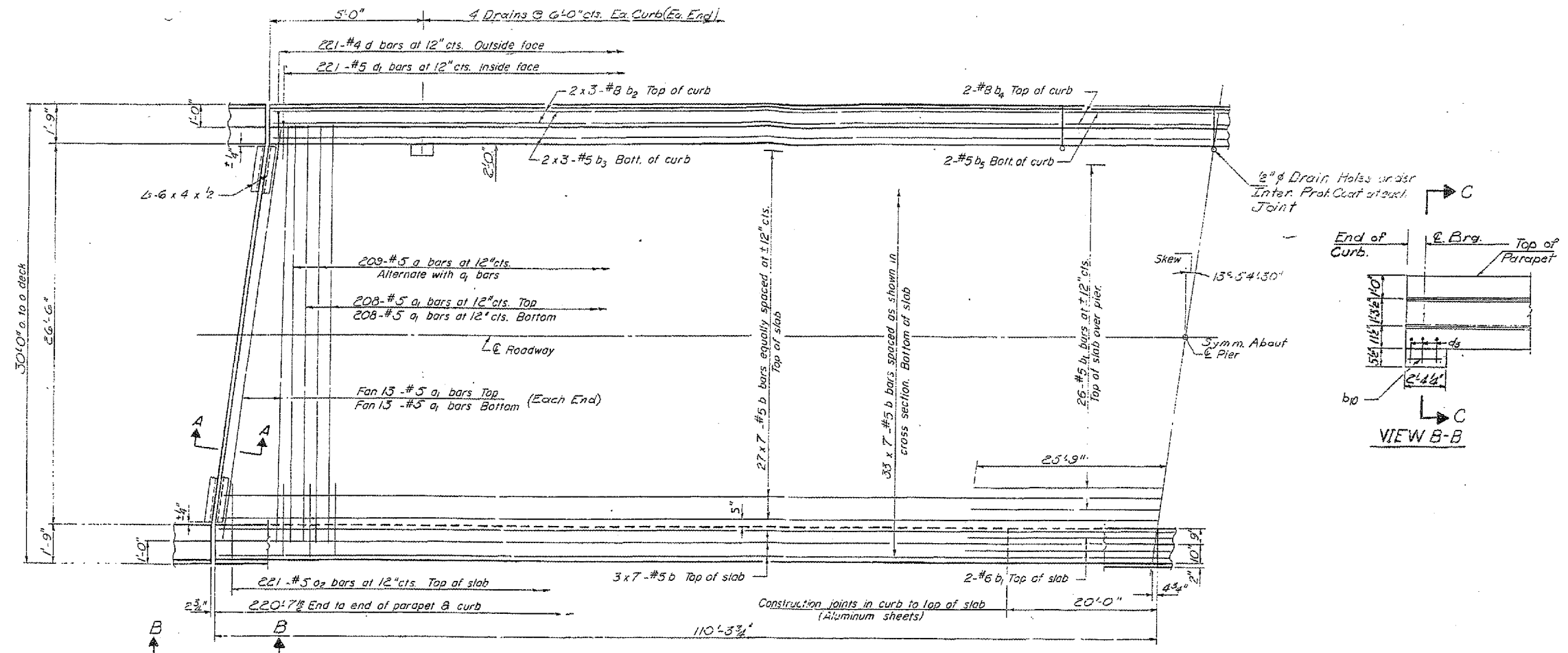
SEC. B-B

"FOR INFORMATION ONLY"

REVISIONS	
NAME	DATE

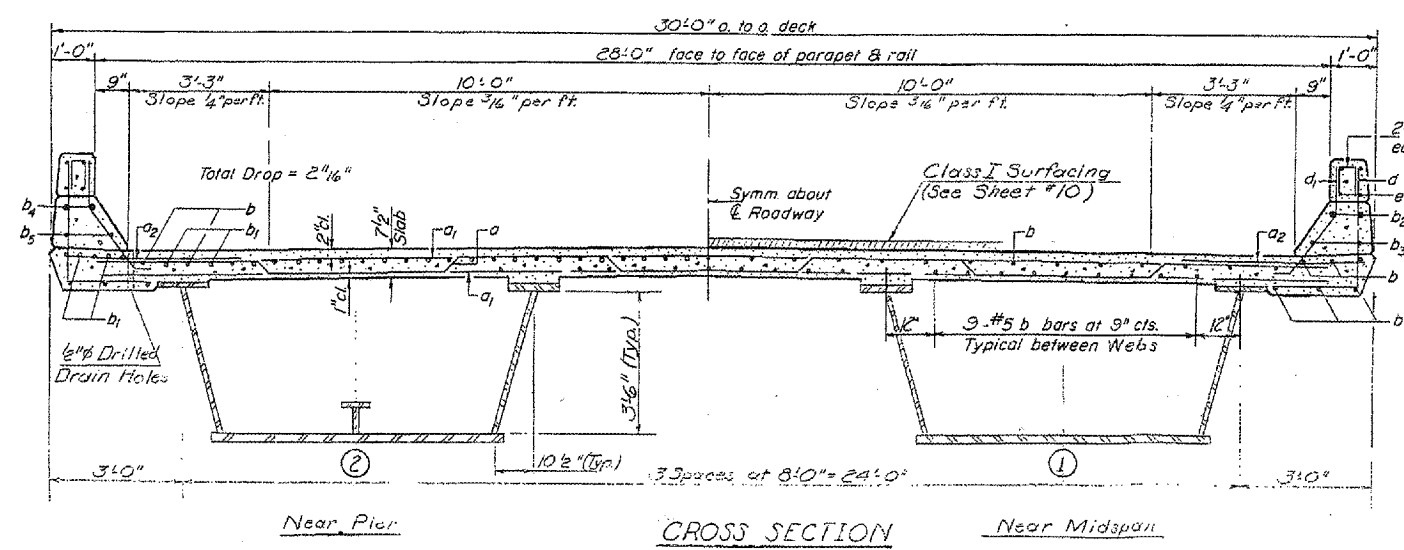
ILLINOIS DEPARTMENT OF TRANSPORTATION
EXISTING STRUCTURE DETAILS
BRIDGE LOCATION NO. 1
 FAI ROUTE 55 (I-55) SECTION 53(6HB-1,6B)BP
 LIVINGSTON COUNTY
 SN 053-0122, SN 053-0124 (SB), SN 053-0125 (NB)

F.A.I. RTE.	SECTION	COUNTY	TOTAL SHEETS	SHEET NO.
55	5316HB-1.6B1BP	LIVINGSTON	15	10
ILLINOIS				

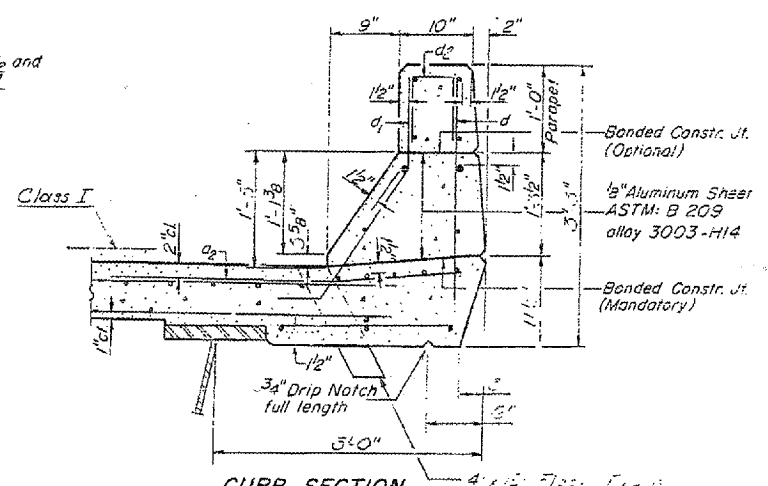


Notes: For Sec. A-A, See Sheet #3

HALF PLAN



NOTE: For placement of bars d2 and e thru e2 see sheet #4



CURB SECTION
Cost of Aluminum Sheets shall be incidental to Class X Concrete.

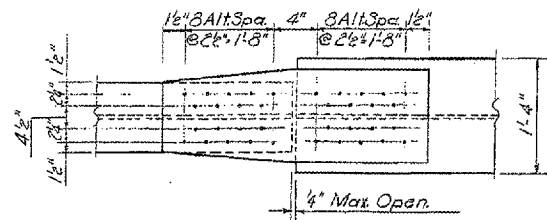
REVISIONS	
NAME	DATE

ILLINOIS DEPARTMENT OF TRANSPORTATION
EXISTING STRUCTURE DETAILS
BRIDGE LOCATION NO. 1
 FAI ROUTE 55 (I-55) SECTION 5316HB-1.6B1BP
 LIVINGSTON COUNTY
 SN 053-0122, SN 053-0124 (SB), SN 053-0125 (NB)

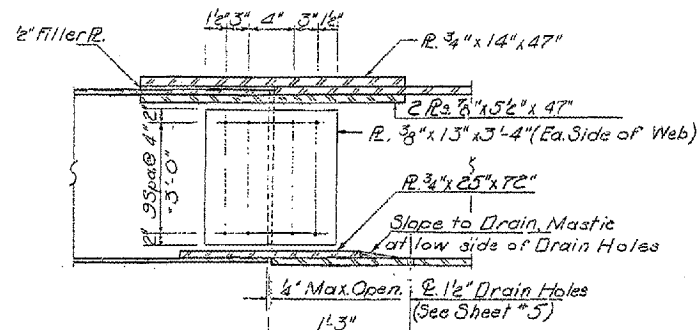
"FOR INFORMATION ONLY"

Date: 03/12/2007
 project: r:\bridgepoint_07\053-0124 & 5.dgn

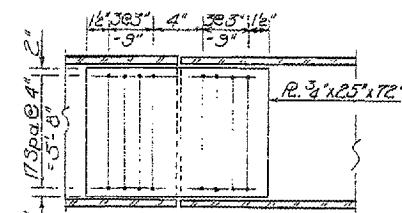
F.A.I. RTE.	SECTION	COUNTY	TOTAL SHEETS	SHEET NO.
55	53(GHB-1,6B)BP	LIVINGSTON	15	11
ILLINOIS				



TOP FLANGE SPLICES

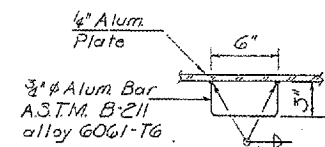


WEB SPLICES

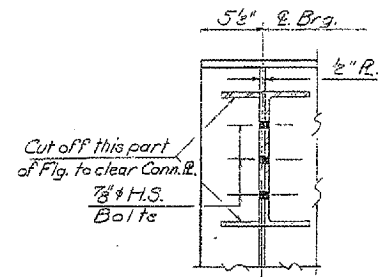


BOTTOM FLANGE SPLICES

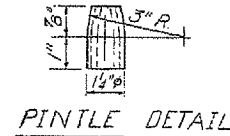
DETAIL OF FIELD SPLICES
(3/8" # H.S. Bolts)



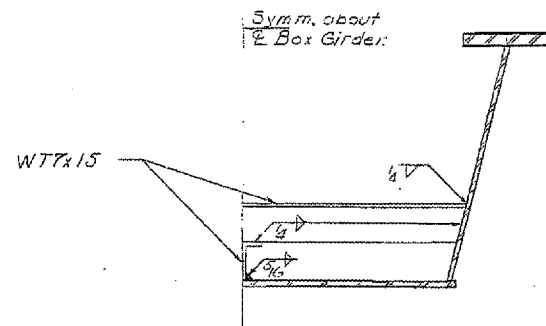
HANDLE DETAIL



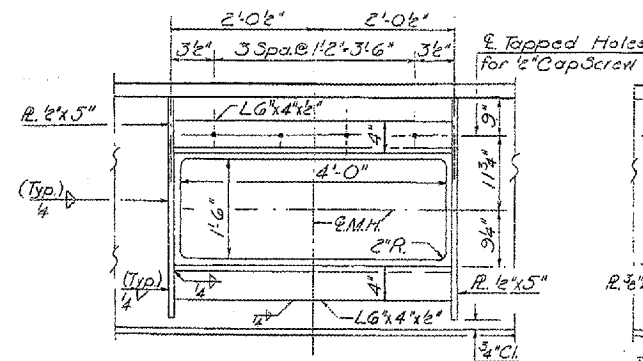
SEC. A-A



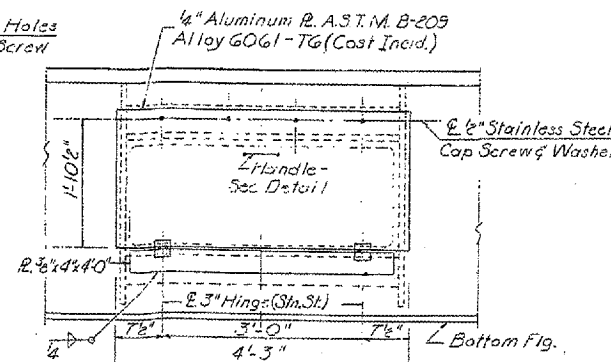
PINTLE DETAIL



SEC. AT TRANSVERSE STIFFENER

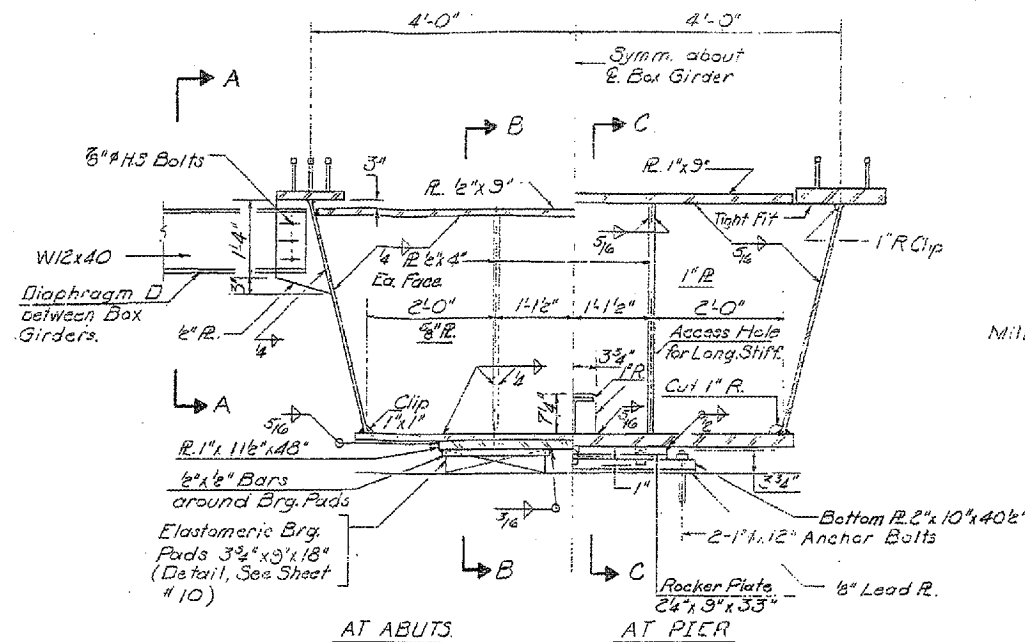


INSIDE VIEW

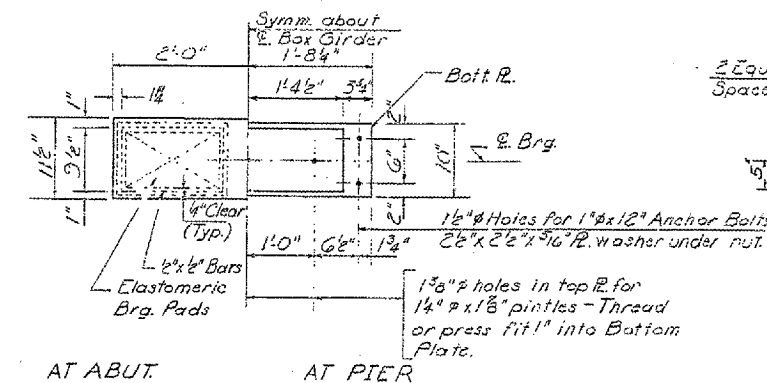


OUTSIDE VIEW

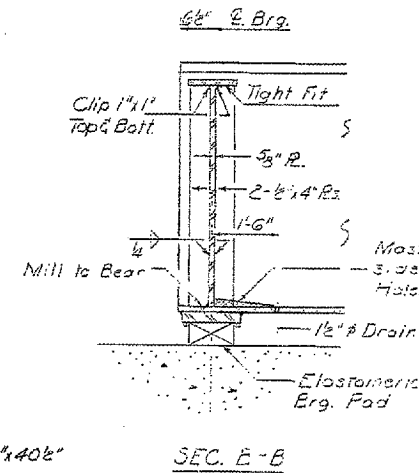
DETAILS OF MANHOLES



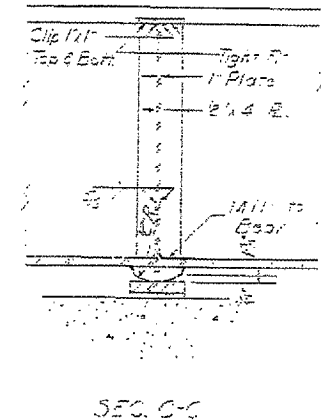
AT ABUTS AT PIER
SECTIONS AT BEARINGS



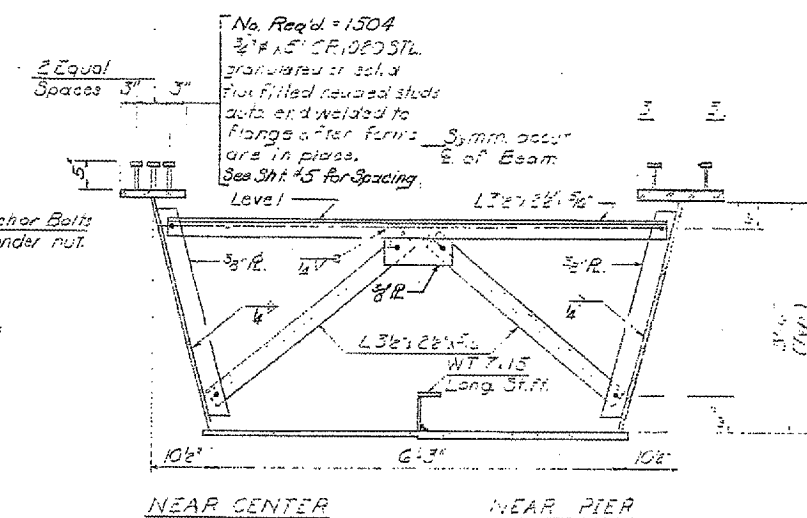
AT ABUT AT PIER
PLAN OF BEARINGS



SEC. E-B



SEC. C-C



NEAR CENTER NEAR PIER

TYPICAL CROSS SECTION
Showing Cross Frame CF-3 with 3 Bolts

Warning Note:
Caution - Ventilate before entering and while working inside girders.

REVISIONS	
NAME	DATE

ILLINOIS DEPARTMENT OF TRANSPORTATION
EXISTING STRUCTURE DETAILS
BRIDGE LOCATION NO. 1
FAI ROUTE 55 (I-55) SECTION 53(GHB-1,6B)BP
LIVINGSTON COUNTY
SN 053-0122, SN 053-0124 (SB), SN 053-0125 (NB)

"FOR INFORMATION ONLY"

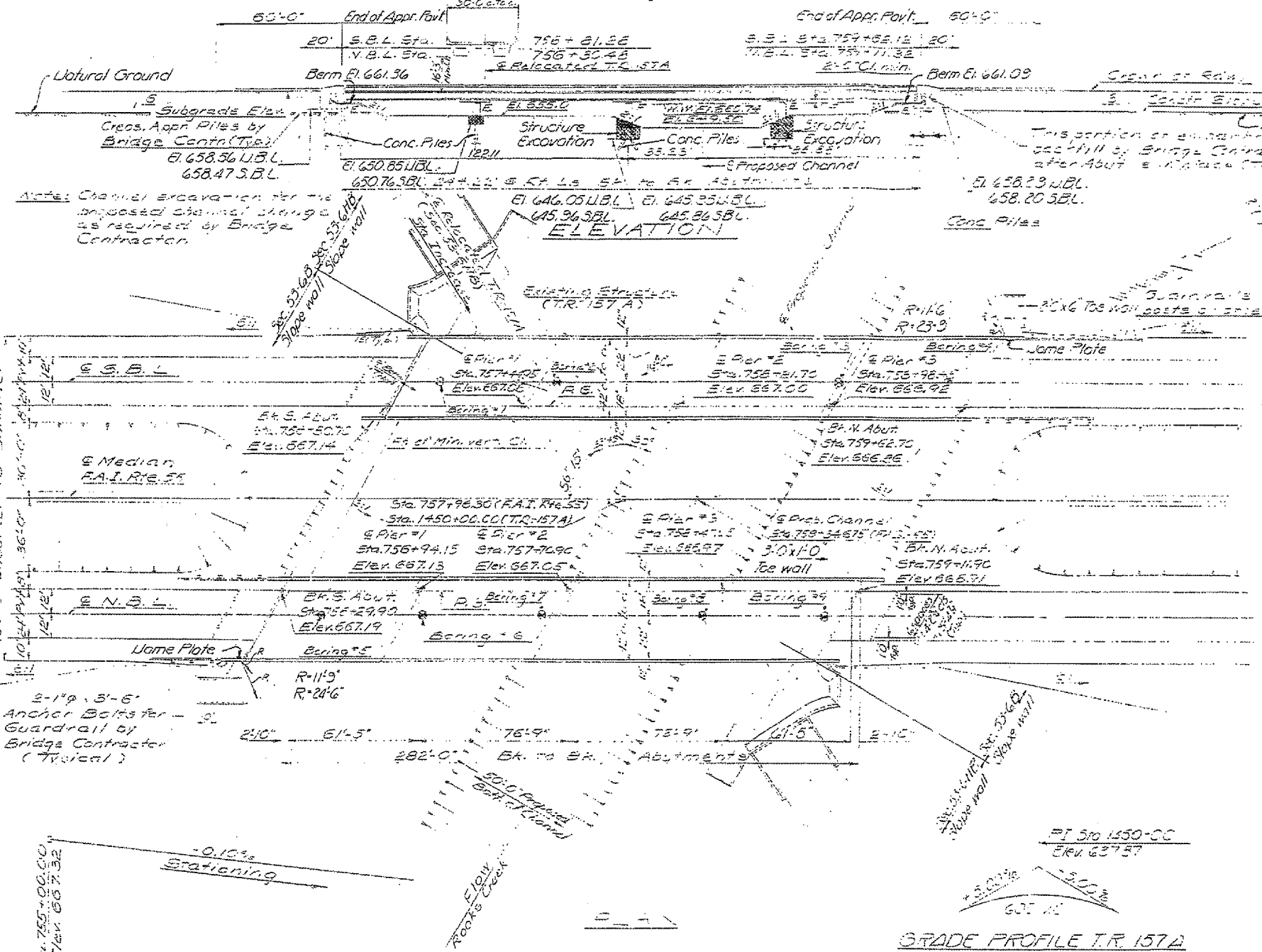
F.A.I. RTE.	SECTION	COUNTY	TOTAL SHEETS	SHEET NO.
55	53(6HB-1,68)BP	LIVINGSTON	15	12

BM 173, RR Spike in 4th Power Pole East of
 Pk No 49 on T.R. 157A, Elev 659.01, 350' RA. Sta.
 760+00 F.A.I. Rte. 55
 Existing Structure: thru steel truss with steel E and timber deck on 30" steel corrugated girders
 T.R. 157A at Sta. 1450+00.00 to be removed during const. of Sec. 53-5B by Bridge Contractor.

STATE OF ILLINOIS
 DIVISION OF HIGHWAYS

APPROACH FILE DATA

Type: Crossed
 Length: 10.400 ft.
 No. Required: 23



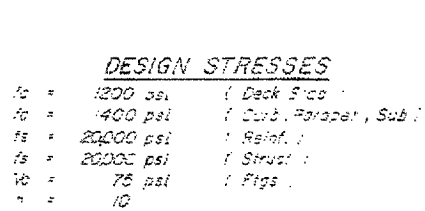
PROPOSED CHANNEL

For Channel Change see ST 2

STRUCTURE BUILT BY STATE OF ILLINOIS
 F.A.I. Rte. 55 SEC 53-5B
 PROJECT 555-5-6
 LOADING HS20-44

WAKE FLATE
 (See Sta. 2, 3)

GRADE PROFILE T.R. 157A



PROPOSED PROFILE F.A.I. RTE. 55
 Proposed Grade & Median edge of Pavt.

WATERWAY INFORMATION

Drainage Area 62.75 Sq. mi.
 Character: level, cultivated
 Required Opening (50 yr flood) 1500 Sq. Ft.
 Present Opening 708 Sq. Ft.
 Proposed Opening 1500 Sq. Ft.
 Ordinary Water Elev. 552.0
 Low Water Elev. 551.0
 H.W. El. 550.74
 H.W. El. 552.70 (All time)
 Created Hand-drawn
 Q₁₀₀ = +168 cfs

DESIGN STRESSES

f_c = 1200 psi (Deck Fico)
 f_c = 400 psi (Sub. Parapet, Sub.)
 f_s = 20000 psi (Reinf.)
 f_s = 20000 psi (Struct.)
 f_v = 75 psi (Figs.)
 n = 10

LOADING HS 20-44 & ALT. (SEC. 53-5B)

Design Specifications: AASHTO 1989 as modified
 Note: Allow 25% for future M.S.

"FOR INFORMATION ONLY"

REVISIONS	
NAME	DATE

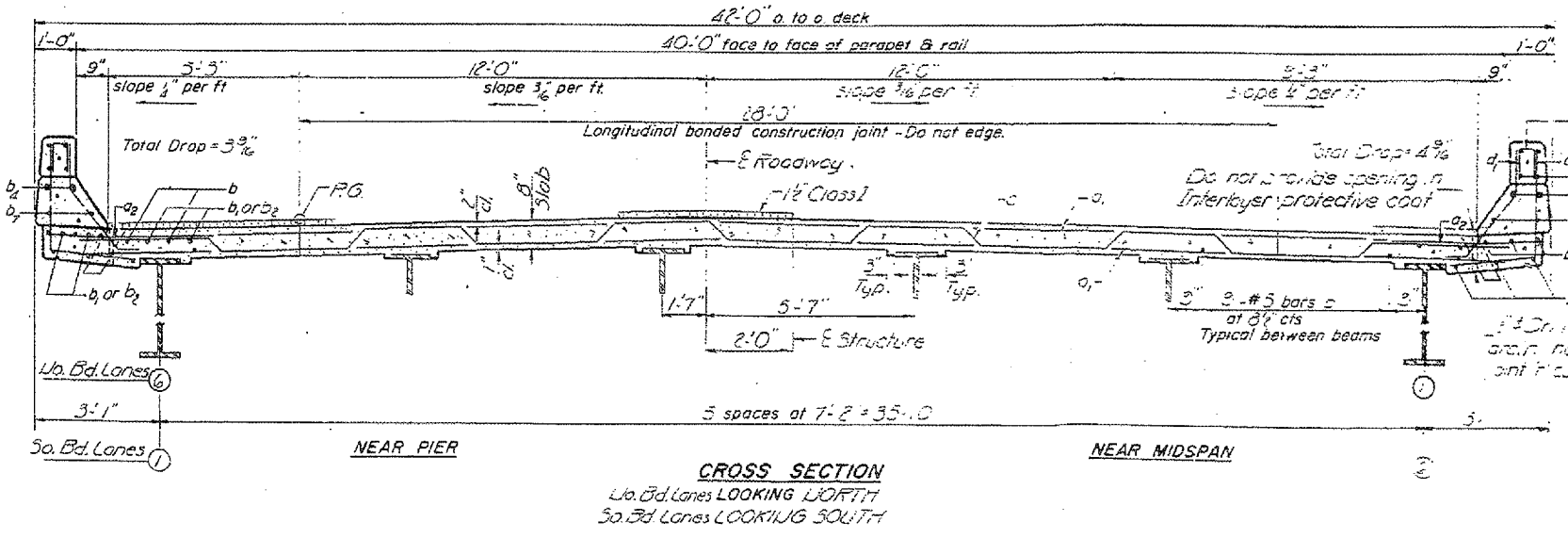
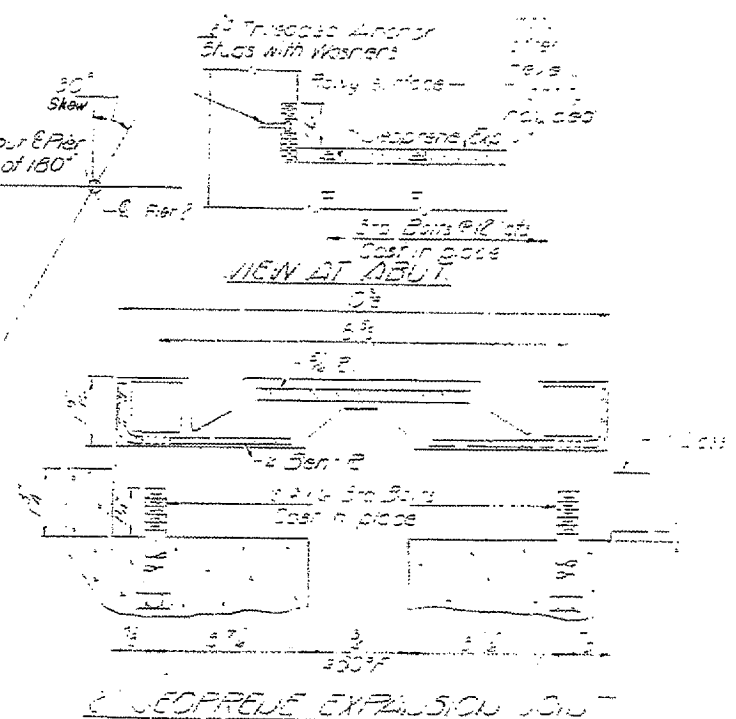
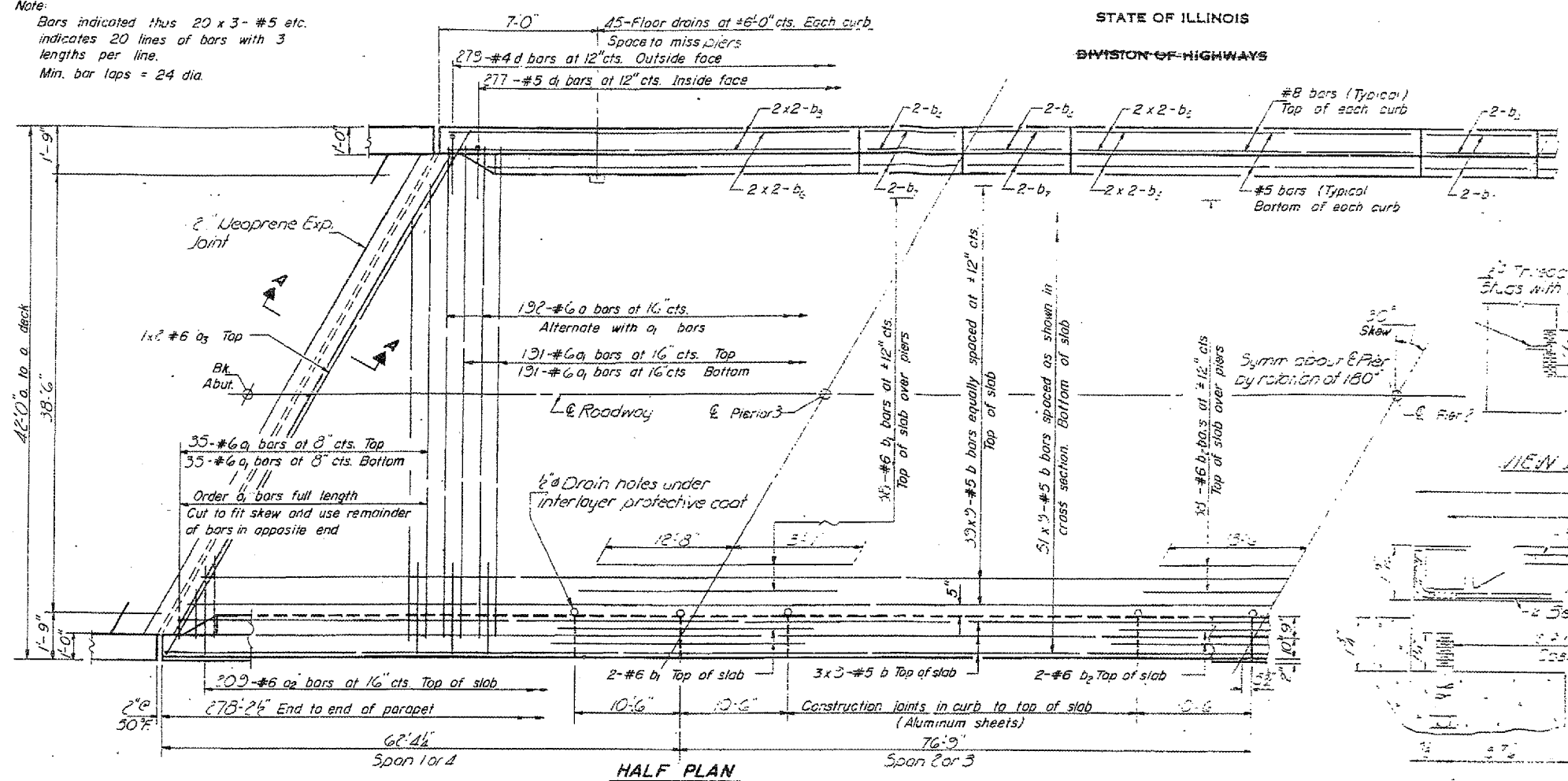
ILLINOIS DEPARTMENT OF TRANSPORTATION
EXISTING STRUCTURE DETAILS
BRIDGE LOCATION NO. 2 AND 3
 FAI ROUTE 55 (I-55) SECTION 53(6HB-1,68)BP
 LIVINGSTON COUNTY
 SN 053-0122, SN 053-0124 (SB), SN 053-0125 (NB)

Date: 03/12/2007
 project: brldgpaint_07/053-0124 & 5.dgn

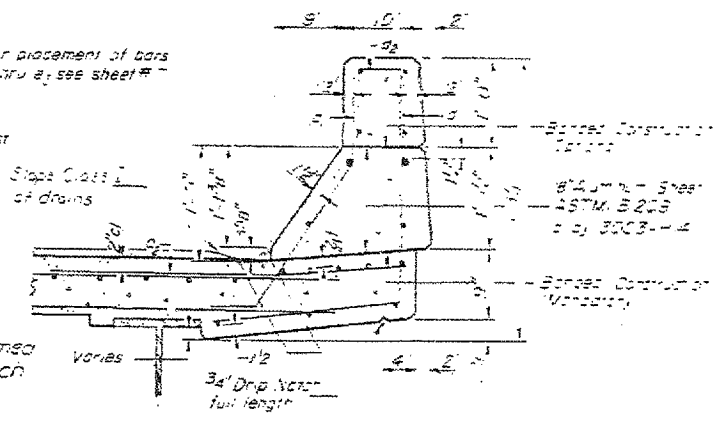
F.A.I. RTE.	SECTION	COUNTY	TOTAL SHEETS	SHEET NO.
55	53(6HB-1,6B)BP	LIVINGSTON	15	13

Note:

Bars indicated thus 20 x 3 - #5 etc. indicates 20 lines of bars with 3 lengths per line.
Min. bar laps = 24 dia.



Note: For placement of bars d_2 & e thru e_2 see sheet #



"FOR INFORMATION ONLY"

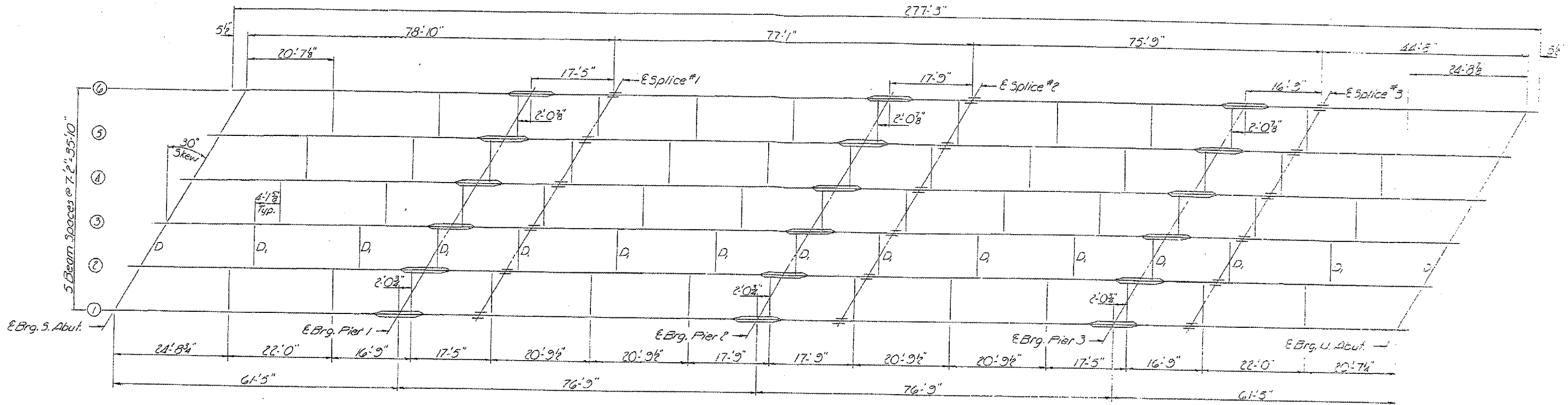
REVISIONS	
NAME	DATE

ILLINOIS DEPARTMENT OF TRANSPORTATION
EXISTING STRUCTURE DETAILS
BRIDGE LOCATION NO. 2 AND 3
 FAI ROUTE 55 (I-55) SECTION 53(6HB-1,6B)BP
 LIVINGSTON COUNTY
 SN 053-0122, SN 053-0124 (SB), SN 053-0125 (NB)

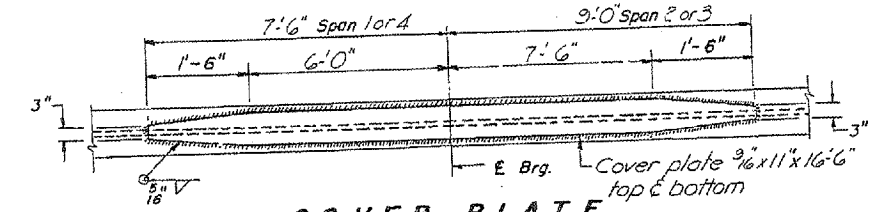
Date: 03/12/2007
 Project: cr/bridgepaint.07/053-0124 & 5.dgn

F.A.I. RTE.	SECTION	COUNTY	TOTAL SHEETS	SHEET NO.
55	5316HB-1,6B1BP	LIVINGSTON	15	14

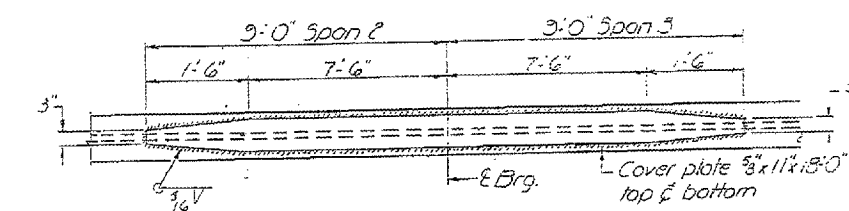
STATE OF ILLINOIS
DIVISION OF HIGHWAYS



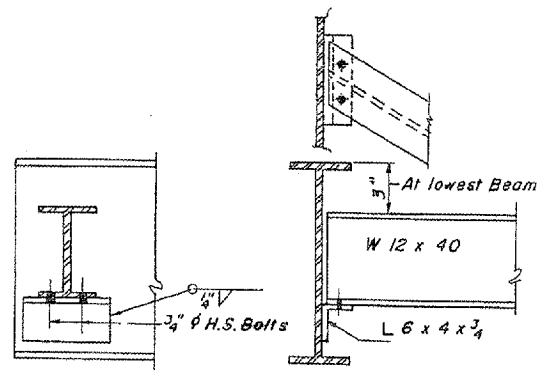
FRAMING PLAN
Typ. North and South Bd. Lanes
All Beams W36x160



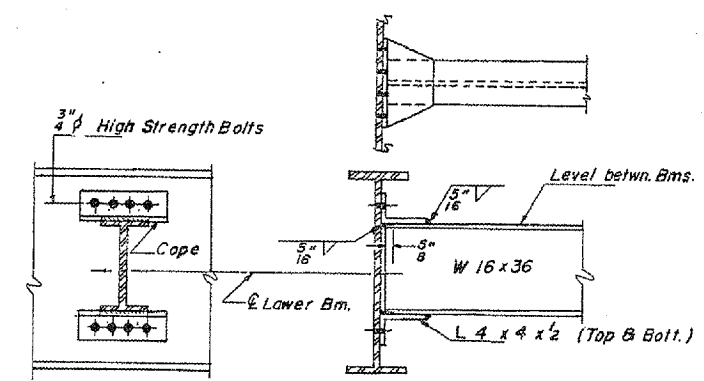
COVER PLATE
PIER 1 & 3



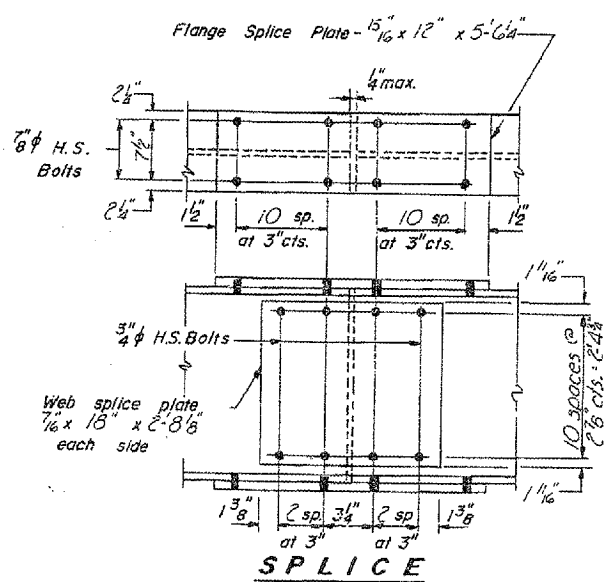
COVER PLATE
PIER 2



DIAPHRAGM D
20 Total Required



DIAPHRAGM D
130 Total Required



SPlice

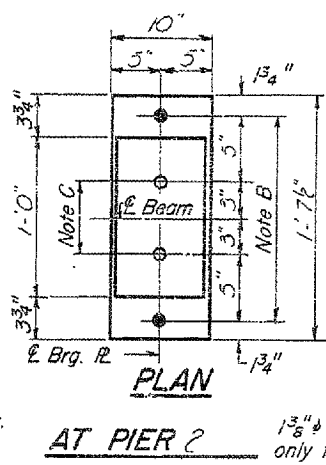
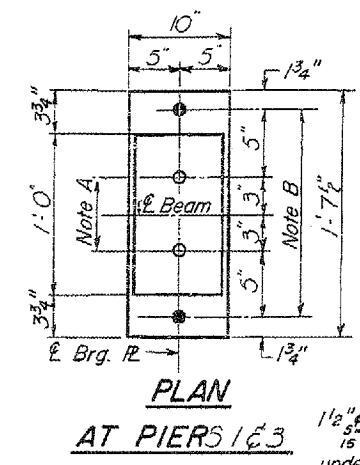
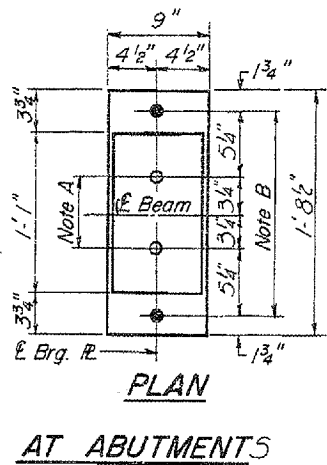
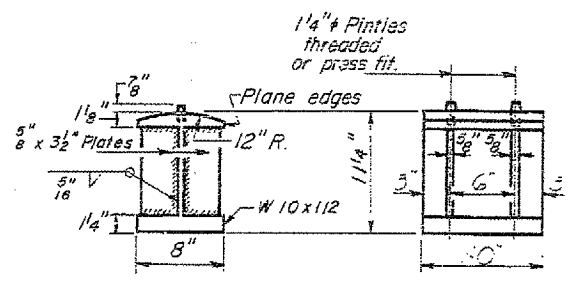
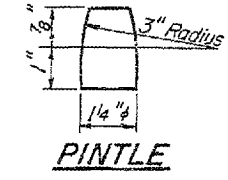
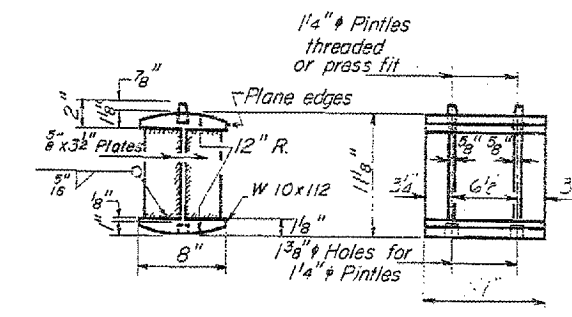
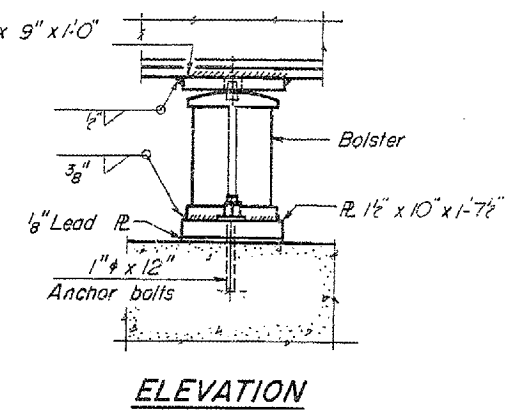
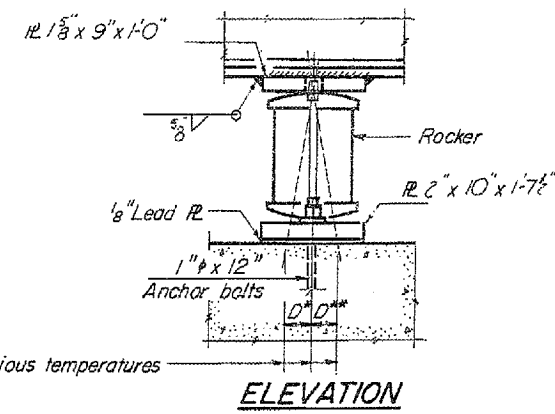
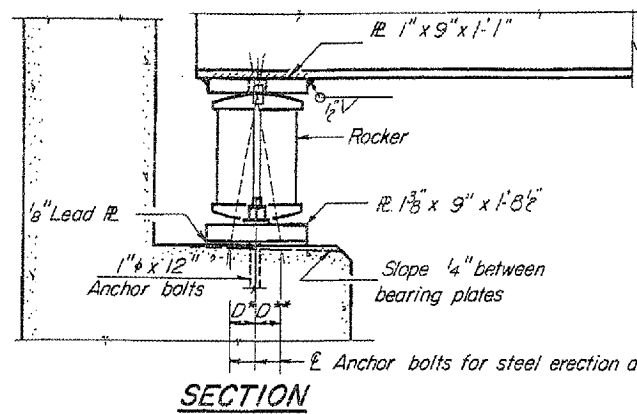
"FOR INFORMATION ONLY"

REVISIONS		ILLINOIS DEPARTMENT OF TRANSPORTATION
NAME	DATE	
		EXISTING STRUCTURE DETAILS BRIDGE LOCATION NO. 2 AND 3 FAI ROUTE 55 (I-55) SECTION 5316HB-1,6B1BP LIVINGSTON COUNTY SN 053-0122, SN 053-0124 (SB), SN 053-0125 (NB)

Date: 03/12/2007
Project: ca/bridgepaint_07/053-0124 & 5.dgn

F.A.I. SHEET NO.	SECTION	COUNTY	TOTAL SHEETS	SHEET NO.
95	536HB-1.6B/BP	LIVINGSTON	15	15
ILLINOIS				

STATE OF ILLINOIS
DIVISION OF HIGHWAYS



NOTE A
1 3/8" Holes - 1" deep in top R.
for pintles. Thread or press fit
pintles into bottom R.

NOTE B
1 1/2" Holes for 1" anchor bolts.
1 5/8 x 2 1/2 x 2 1/2" R. Washers
under nut.

NOTE C
1 3/8" Holes 1" deep in top R.
only for 1 1/4" pintles.

BEARING ASSEMBLY DETAILS

NOTES ON SETTING OF ANCHOR BOLTS AT EXP. BRGS.

- a) D* (Side of brg. away from fixed brg.)
D* = 1/8" per each 100' of expansion for every 15° fall below the normal temp. of 50°F
- D** (Side of brg. toward fixed brg.)
D** = 1/8" per each 100' of expansion for every 15° rise above the normal temp. of 50°F

b) After beams have been erected and dimensions D* or D** determined, holes shall be drilled and anchor bolts shall be grouted in place. All fixed anchor bolts may be built into the masonry.

***TOP OF WF ELEVATIONS - NORTH BD. LINES**

	Bm. 1	Bm. 2	Bm. 3	Bm. 4	Bm. 5	Bm. 6
E Brg. South Abut.	666.20	666.34	666.45	666.51	666.40	666.26
E Brg. Pier 1	666.14	666.28	666.39	666.45	666.34	666.20
E Splice #1	666.12	666.26	666.37	666.43	666.32	666.18
E Brg. Pier 2	666.04	666.20	666.31	666.37	666.26	666.12
E Splice #2	666.08	666.18	666.29	666.35	666.24	666.10
E Brg. Pier 3	665.99	666.13	666.24	666.30	666.19	666.05
E Splice #3	665.97	666.11	666.22	666.28	666.17	666.03
E Brg. North Abut.	665.93	666.07	666.18	666.24	666.13	665.99

* For fabrication only

***TOP OF WF ELEVATIONS - SOUTH BD. LINES**

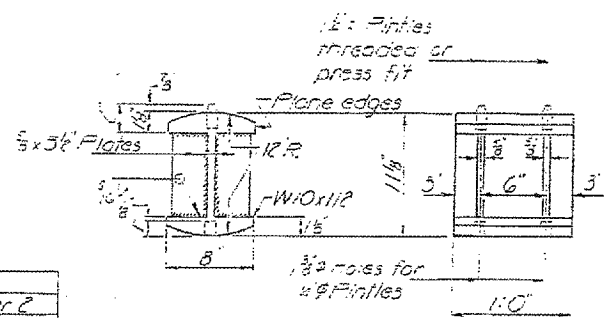
	Bm. 1	Bm. 2	Bm. 3	Bm. 4	Bm. 5	Bm. 6
E Brg. South Abut.	666.21	666.34	666.45	666.51	666.26	666.11
E Brg. Pier 1	666.15	666.28	666.39	666.45	666.20	666.05
E Splice #1	666.13	666.26	666.37	666.43	666.18	666.03
E Brg. Pier 2	666.07	666.20	666.31	666.37	666.12	665.97
E Splice #2	666.05	666.18	666.29	666.35	666.10	665.95
E Brg. Pier 3	666.00	666.13	666.24	666.30	666.05	665.90
E Splice #3	665.98	666.11	666.22	666.28	666.03	665.88
E Brg. North Abut.	665.94	666.07	666.18	666.24	665.99	665.84

INTERIOR BEAM MOMENT TABLE

	0.4 Sp. for 0.6 Sp. 4	Piers for 0.5 Sp. 2	Pier 3	Pier 2
I (in ⁴)	9760.0	13395.8	9760.0	14371.0
E (in ³)	1.376	1.376	1.376	1.376
M _E (in)	343.34	638.74	306.47	714.68
M _E (in)	429.58	408.64	432.48	440.54
Imp. (in)	113.13	105.43	107.26	109.26
M _{TOTAL} (in)	888.05	1212.81	846.21	1264.48
R (ksi)	19.661	19.441	18.735	19.665

INTERIOR BEAM REACTION TABLE

	Abut.	Pier 1 or 3	Pier 2
R _E (k)	30.88	106.23	106.02
R _E (k)	58.09	52.09	53.49
Imp. (k)	10.21	13.44	13.27
R _{TOTAL} (k)	79.18	171.76	172.78



"FOR INFORMATION ONLY"

REVISIONS

NAME	DATE

ILLINOIS DEPARTMENT OF TRANSPORTATION
EXISTING STRUCTURE DETAILS
BRIDGE LOCATION NO. 2 AND 3
FAI ROUTE 55 (I-55) SECTION 53(6HB-1.6B)BP
LIVINGSTON COUNTY
SN 053-0122, SN 053-0124 (SB), SN 053-0125 (NB)

Date: 03/12/2007
Project: br ridgepaint.07/053-0124 & 5.dgn