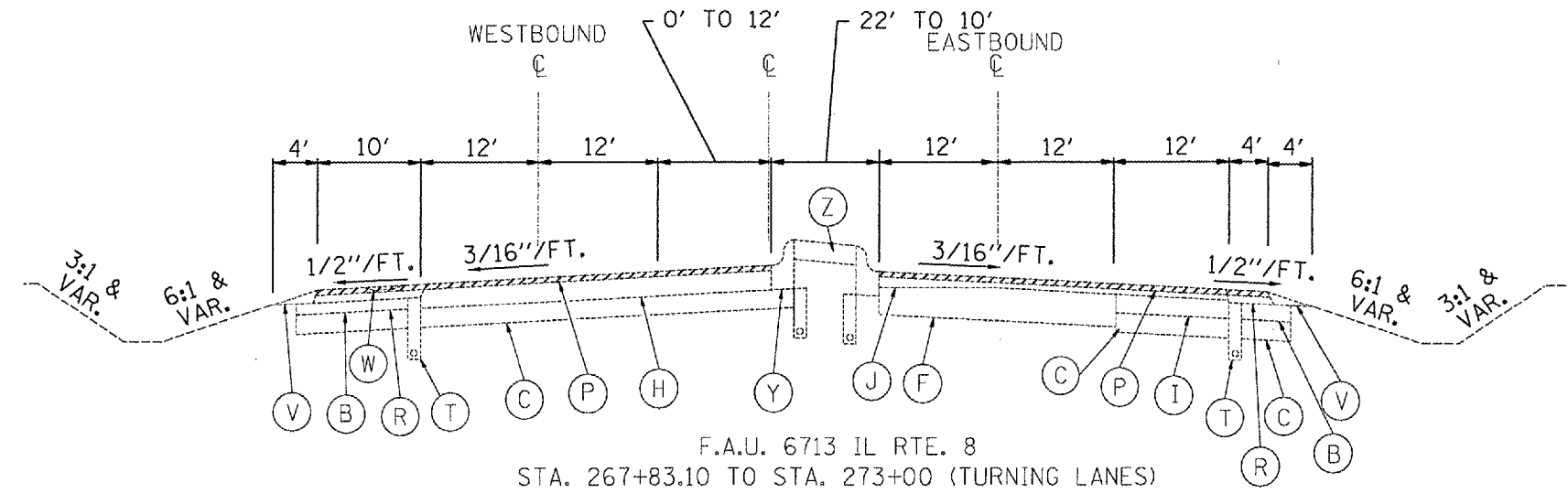


F.A.U. RTE.	SECTION	COUNTY	TOTAL SHEETS	SHEET NO.
* 35RS-5,36RS-8	TAZEWELL	90	14	
STA. TO STA.		FED. ROAD DIST. NO. ILLINOIS FED. AID PROJECT		
*6717 (BUS 24) & 6713 (IL 8)				

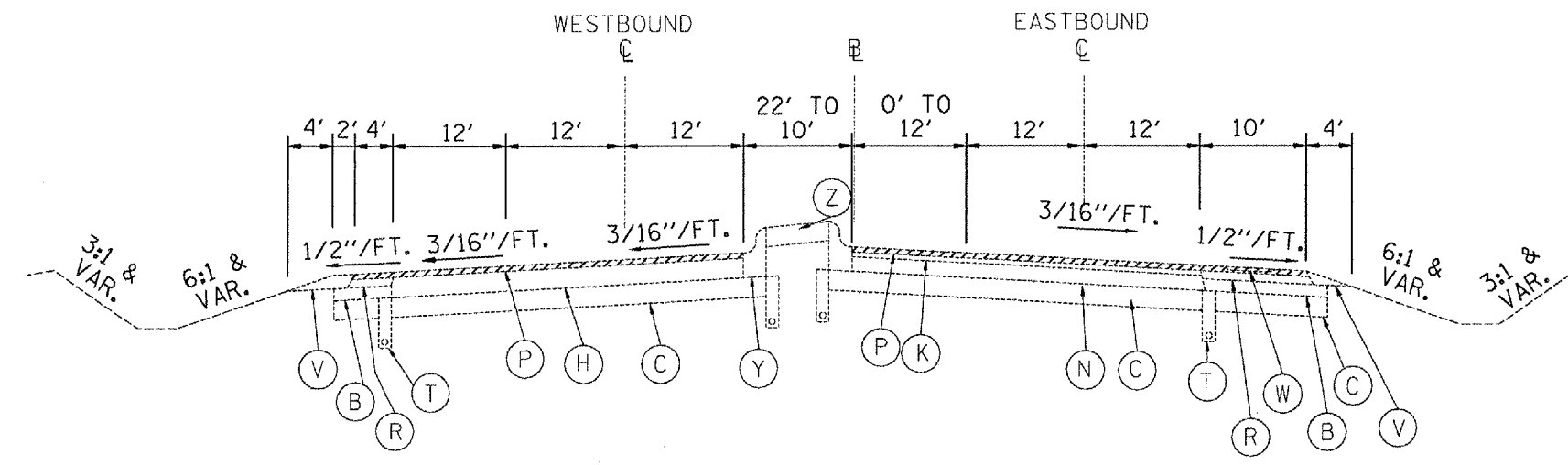
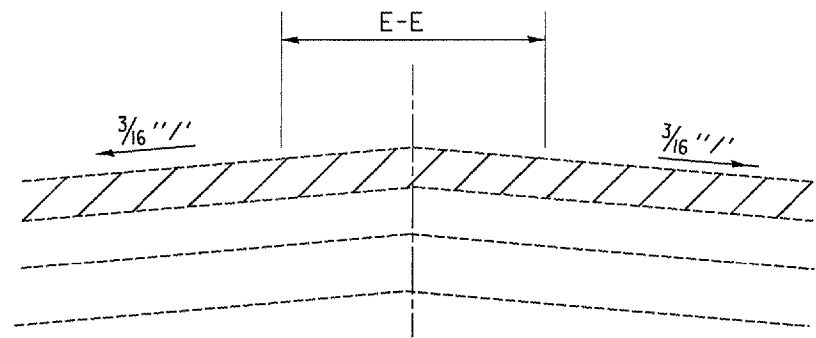
EXISTING LEGEND

- (A) GRANULAR SUB-BASE, 4"
- (B) SUB-BASE GRANULAR MATERIAL, TYPE C
- (C) SUB-BASE GRANULAR MATERIAL, TYPE A, 12"
- (D) LIME MODIFIED SOIL, 12"
- (E) P.C.C. PAVEMENT, 10"
- (F) P.C.C. PAVEMENT 8"
- (G) BIT. CONC. PAVEMENT; 13 3/4" BINDER, 1 1/2" SURFACE
- (H) BIT. CONC. BINDER COURSE, TYPE 2, 11 1/2"
- (I) BITUMINOUS BASE COURSE, 10 3/4"
- (J) LEVELING BINDER (MACHINE METHOD), TYPE 2
- (K) LEVELING BINDER (MACHINE METHOD), TYPE 2, 3/4"
- (L) BITUMINOUS BASE COURSE, 8"
- (M) BITUMINOUS BASE COURSE, 6"
- (N) P.C.C. BASE COURSE, 8 1/2"
- (O) BIT. CONC. BINDER COURSE, TYPE 2, 1 1/2"
- (P) BCSC, MIX D, CL I, TYPE 2, 1 1/2"
- (Q) STRIP REFLECTIVE CRACK CONTROL TREATMENT, SYSTEM A
- (R) BITUMINOUS SHOULDER
- (S) BITUMINOUS MIXTURE COMPLETE MODIFIED, 3"
- (T) PIPE UNDERDRAINS, 4"
- (U) PIPE UNDERDRAIN, 4" SPECIAL
- (V) AGGREGATE SHOULDER, TYPE B
- (W) SHOULDER RUMBLE STRIP
- (X) CONCRETE GUTTER, TYPE B (MODIFIED)
- (Y) CCC&G B-9.24
- (Z) CONCRETE MEDIAN SURFACE, 4"



F.A.U. 6713 IL RTE. 8
STA. 267+83.10 TO STA. 273+00 (TURNING LANES)

MEDIAN CROSSOVERS
STA. 272+52.16
STA. 278+91.35



F.A.U. 6713 IL RTE. 8
STA. 273+00 TO STA. 282+00
STA. 279+71.14 TO STA. 282+00 (TURNING LANE)

- HMA SURFACE REMOVAL, 3/4"
- HMA SURFACE REMOVAL, 1 1/2"

REVISIONS	
NAME	DATE

ILLINOIS DEPARTMENT OF TRANSPORTATION

**EXISTING
TYPICAL SECTIONS
F.A.U. 6713 (IL 8)**

SCALE: VERT. DATE: HORIZ. DATE: DRAWN BY: CHECKED BY:

PLOT DATE = 4/4/2007
 PLOT SCALE = 1/8" = 1'-0"
 REFERENCE = REF#