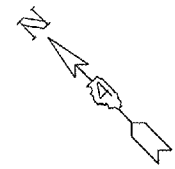


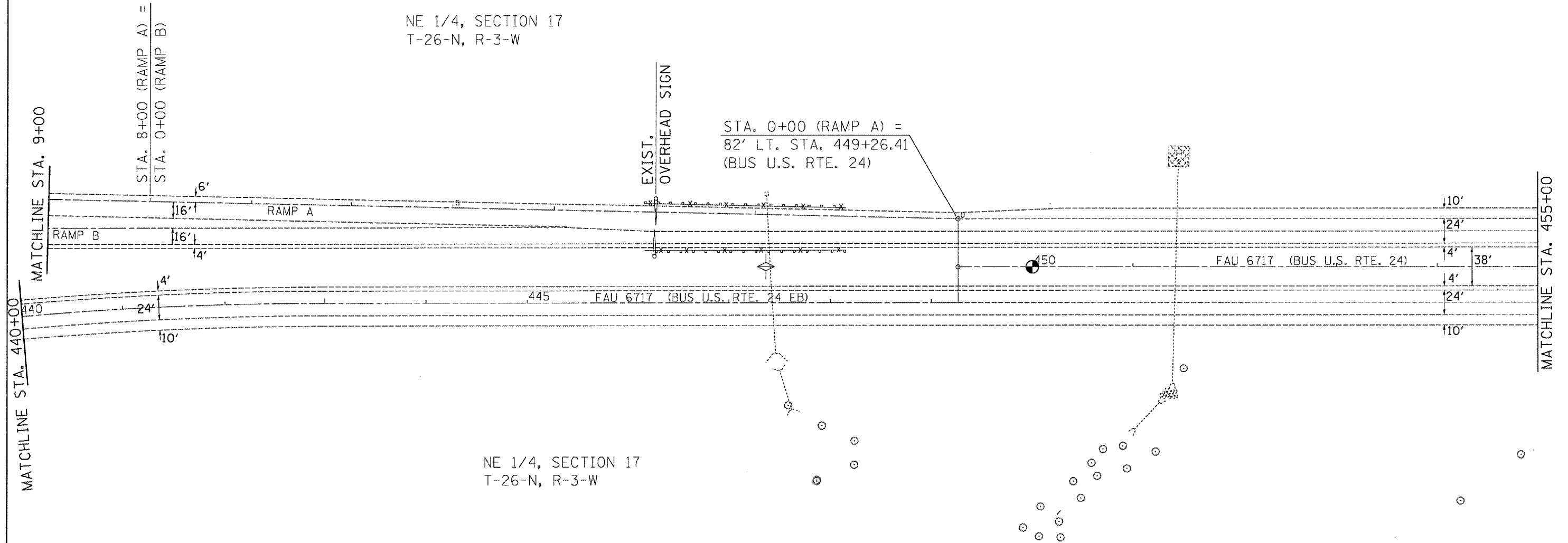
F.A.U. RTE.	SECTION	COUNTY	TOTAL SHEETS	SHEET NO.
• 35RS-5,36RS-8	TAZEWELL	90	53	
STA.		TO STA.		
FED. ROAD DIST. NO.	ILLINOIS	FED. AID PROJECT		
•6717 (BUS 24) & 6713 (IL 8)				



NE 1/4, SECTION 17
T-26-N, R-3-W

EXIST.
OVERHEAD SIGN

STA. 0+00 (RAMP A) =
82' LT. STA. 449+26.41
(BUS U.S. RTE. 24)



NE 1/4, SECTION 17
T-26-N, R-3-W



PLOT DATE = 1/17/2007
PLOT SCALE = 1/8" = 100'
USER NAME = h31mank

REVISIONS	
NAME	DATE

ILLINOIS DEPARTMENT OF TRANSPORTATION
EXISTING/REMOVAL
PLAN SHEETS
BUS U.S. RTE. 24
STA. 440+00-455+00
SCALE: VERT. DRAWN BY
 HORIZ. CHECKED BY
DATE