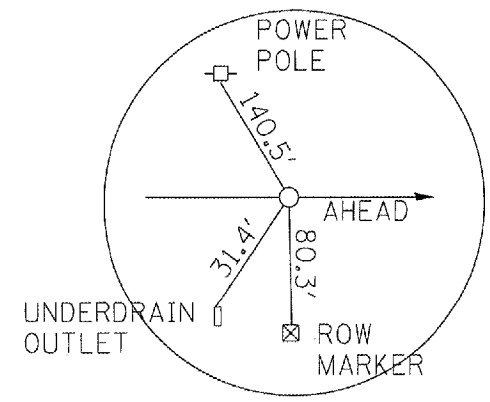


F.A.U. RTE.	SECTION	COUNTY	TOTAL SHEETS	SHEET NO.
35RS-5,36RS-8	TAZEWELL	90	57	
STA. TO STA.		ILLINOIS FED. AID PROJECT		
FED. ROAD DIST. NO.		*6717 (BUS 24) & 6713 (IL 8)		

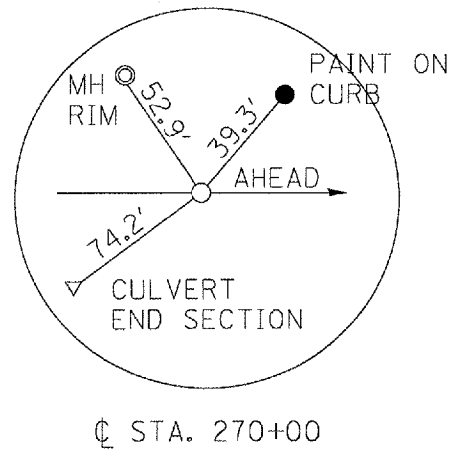
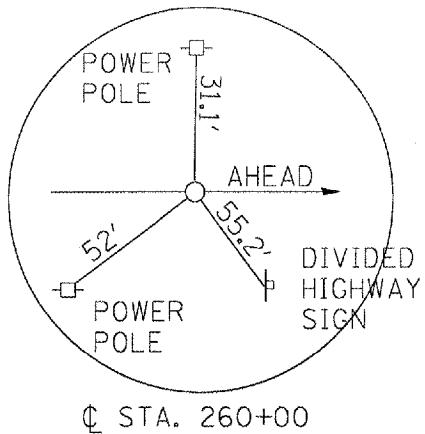
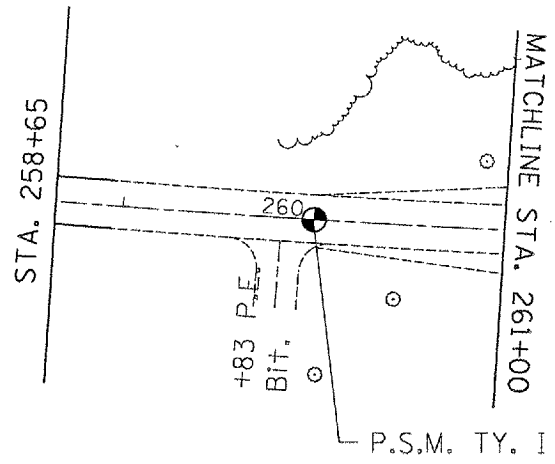
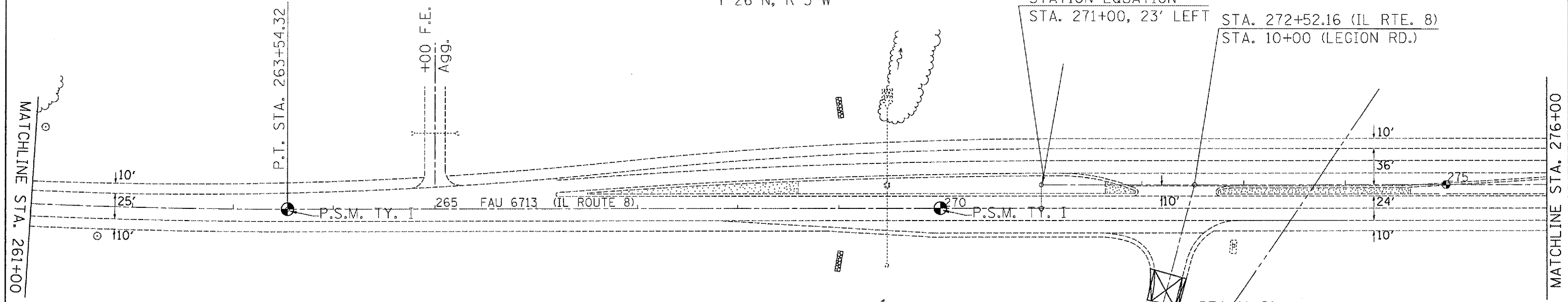
PT STA. 263+54.32



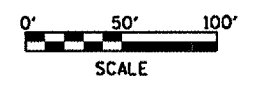
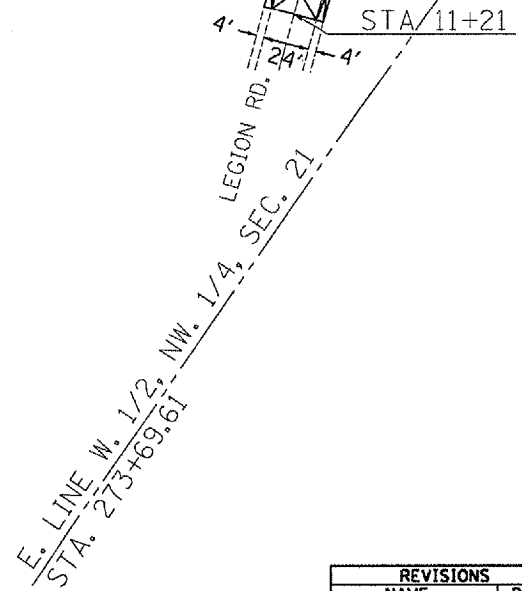
NE 1/4, SECTION 21
T-26-N, R-3-W

STATION EQUATION

STA. 271+00, 23' LEFT STA. 272+52.16 (IL RTE. 8)
STA. 10+00 (LEGION RD.)



NE 1/4, SECTION 21
T-26-N, R-3-W



REVISIONS	
NAME	DATE

ILLINOIS DEPARTMENT OF TRANSPORTATION
EXISTING/REMOVAL
PLAN SHEET
IL ROUTE 8
STA. 258+65-276+00
SCALE: VERT. DATE
HORIZ. DATE
DRAWN BY
CHECKED BY

PLOT DATE = 4/1/2007
FILE NAME = c:\p\mca\mca\24\mca\mca\plan.dgn
PLOT SCALE = 1/8"=1'-0"
USER NAME = mjlmrkk