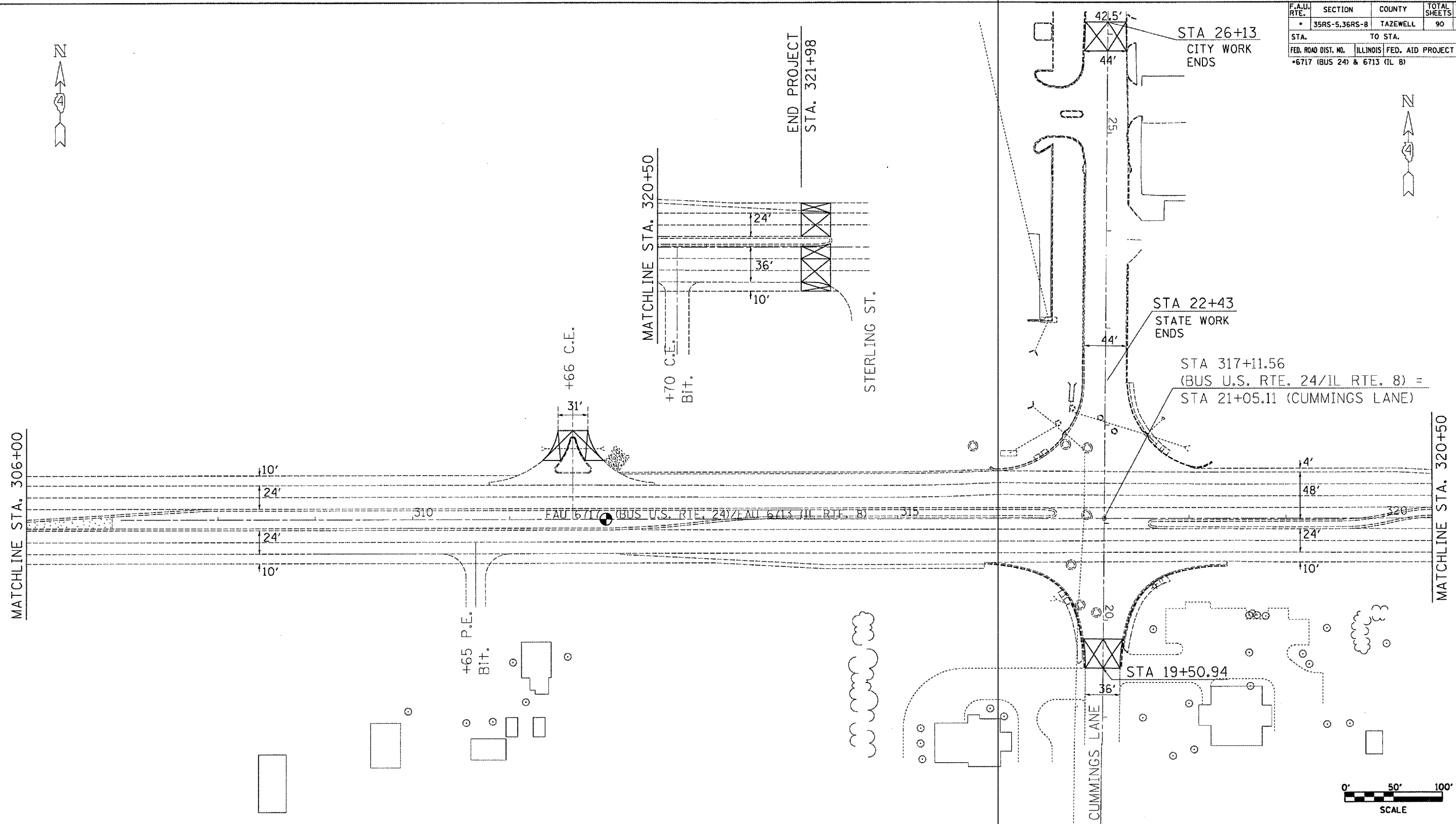


F.A.U. RTE.	SECTION	COUNTY	TOTAL SHEETS	SHEET NO.
35RS-5,36RS-8	TAZEWELL	90	60	
STA. 306+00		TO STA. 320+50		
FED. ROAD DIST. NO.		ILLINOIS	FED. AID PROJECT	
*6717 (BUS 24) & 6713 (IL 8)				



REVISIONS	
NAME	DATE

ILLINOIS DEPARTMENT OF TRANSPORTATION
 EXISTING/REMOVAL
 PLAN SHEET
 BUS 24/IL ROUTE 8
 STA. 306+00 - E.O.P.
 SCALE: VERT. _____
 DATE: _____
 DRAWN BY _____
 CHECKED BY _____