

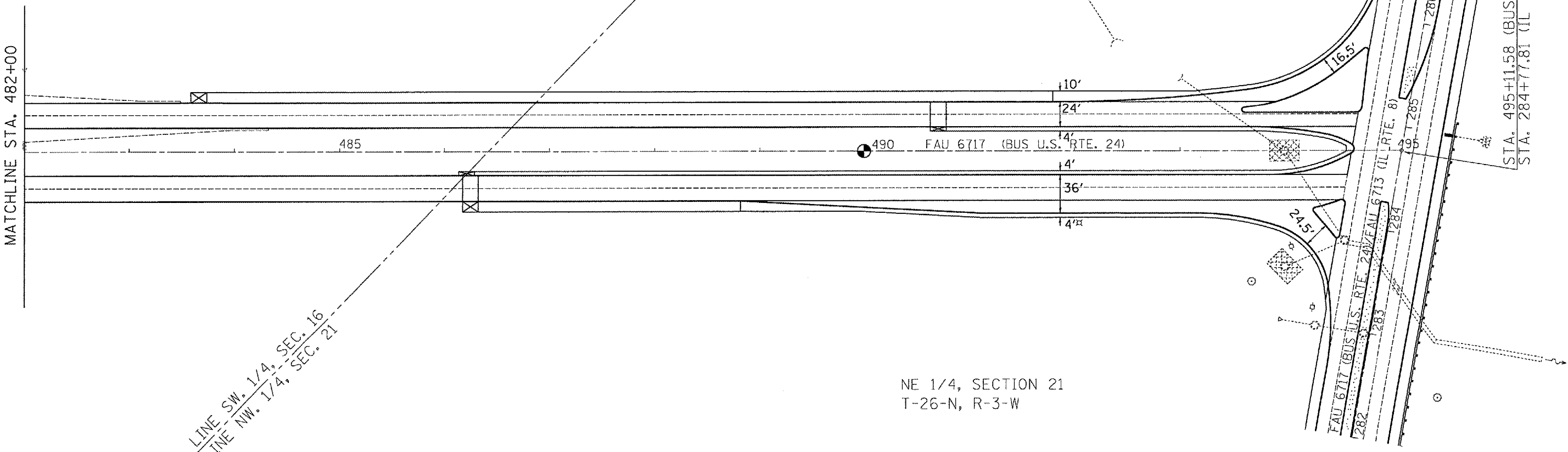
F.A.U. RTE.	SECTION	COUNTY	TOTAL SHEETS	SHEET NO.
35RS-5,36RS-8	TAZEWELL	90	66	
STA.		TO STA.		
FED. ROAD DIST. NO.	ILLINOIS	FED. AID PROJECT		
*6717 (BUS 24) & 6713 (IL 8)				

NE 1/4, SECTION 16  
T-26-N, R-3-W

NE 1/4, SECTION 21  
T-26-N, R-3-W

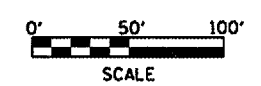
MATCHLINE STA. 482+00

S. LINE SW. 1/4, SEC. 16  
N. LINE NW. 1/4, SEC. 21



STA. 495+11.58 (BUS U.S. RTE. 24)  
STA. 284+77.81 (IL ROUTE 8)

EB MAINLINE STA. 486+17.15 - 486+32.15  
WB MAINLINE STA. 490+63.10 - 490+78.10



2-1/4" MILLING	TRANSITION *	1-1/2" MILLING
* PAID AS HOT MIX ASPHALT SURFACE REMOVAL, 2-1/4"		

REVISIONS	
NAME	DATE

ILLINOIS DEPARTMENT OF TRANSPORTATION  
**PROPOSED PLAN SHEET**  
**BUS U.S. RTE. 24**  
**STA. 482+00 - 495+11.58**  
 SCALE: VERT. \_\_\_\_\_  
 HORIZ. \_\_\_\_\_  
 DATE \_\_\_\_\_  
 DRAWN BY \_\_\_\_\_  
 CHECKED BY \_\_\_\_\_

PLT DATE = 4/1/2007  
 FILE NAME = c:\p\68351\bus24\connet-plandgn  
 PLOT SCALE = 1/8"=1'-0"  
 USER NAME = k1jmarkk