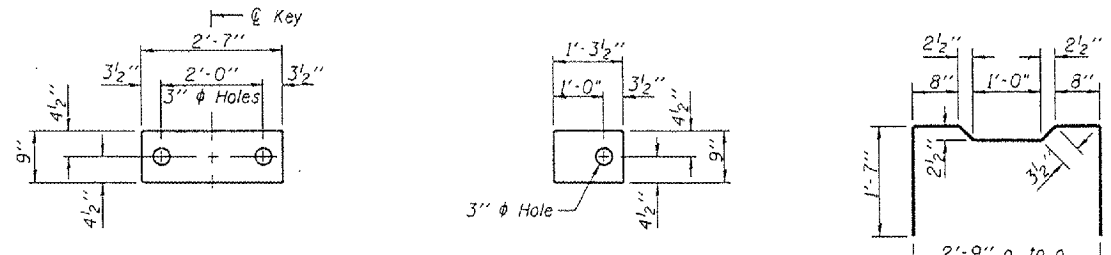


Contract #68415

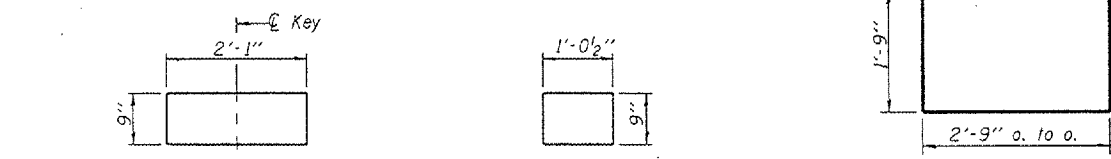


FABRIC BEARING PAD
(Interior)

FABRIC BEARING PAD
(Exterior)

BAR A₁

FIXED

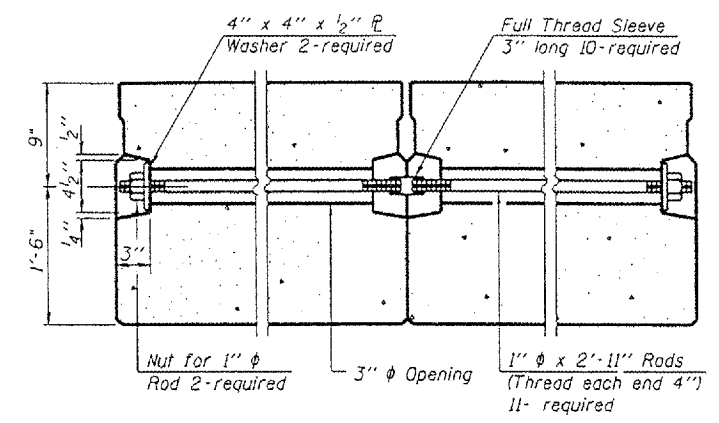


FABRIC BEARING PAD
(Interior)

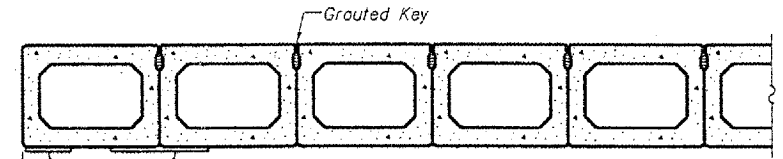
FABRIC BEARING PAD
(Exterior)

BARS U & U₁

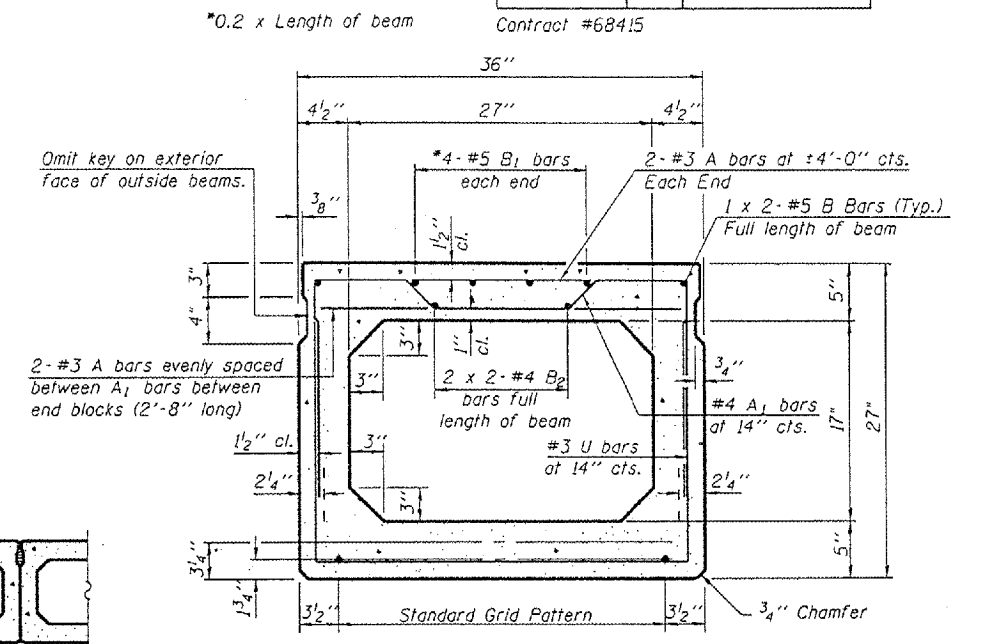
EXPANSION



TYPICAL TRANSVERSE TIE ASSEMBLY



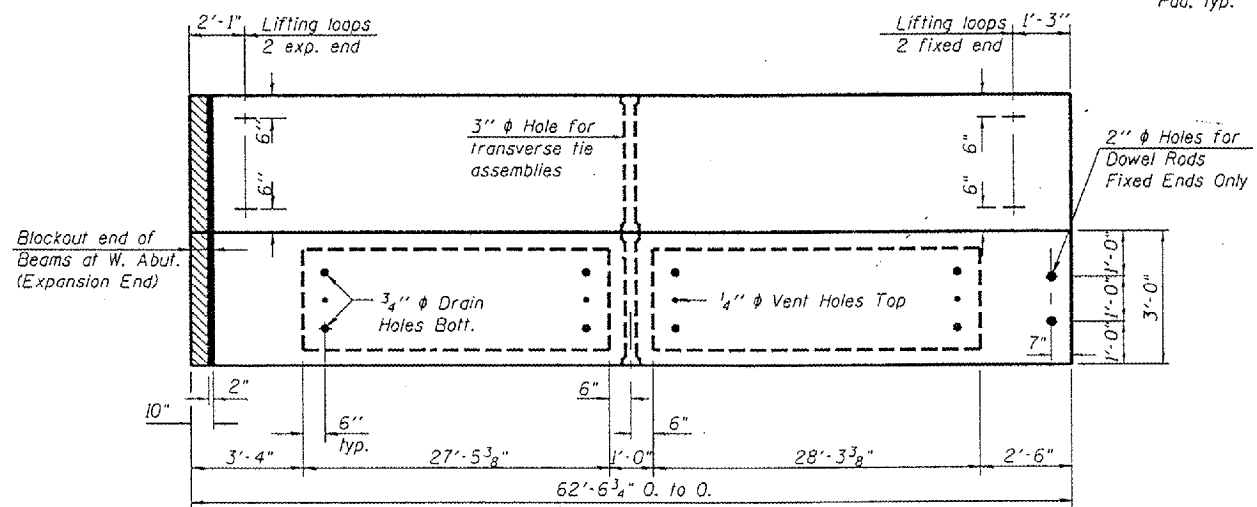
HALF CROSS SECTION



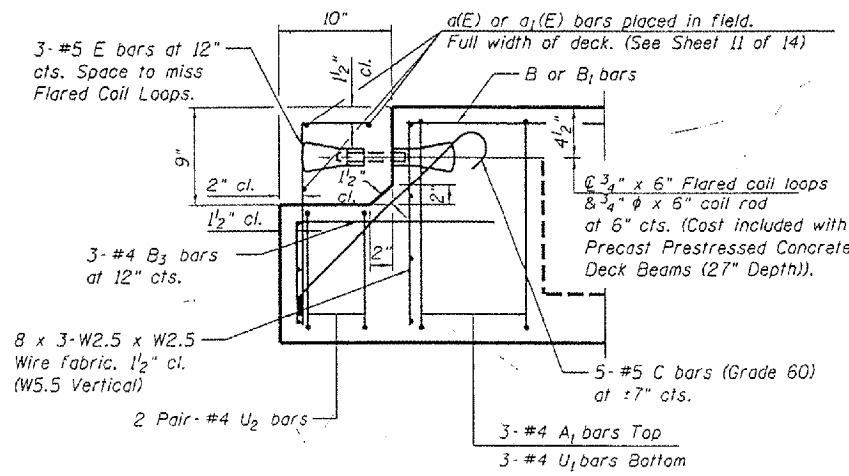
TYPICAL SECTION

1/2" φ Strands, Each Strand Stressed to 30,900 Lbs.
6-Strands 1 3/4" up, 6-Strands 3 1/4" up, 2-Strands 4 1/2" up

Note:
Place strands symmetrically about center of beam.



PLAN

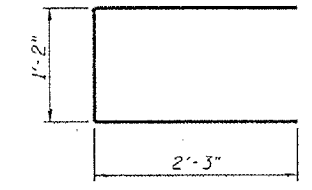


END OF BEAM (EXP. END)

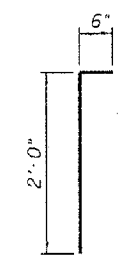
(Dimensions are at Rt. L's)

NOTES

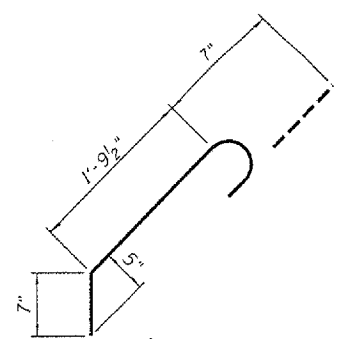
Prestressing steel shall be uncoated high strength, low relaxation 7-wire strand, Grade 270. The nominal diameter shall be 1/2" and the nominal cross-sectional area shall be 0.153 sq. in. Lifting loops shall be 3-1/2" φ-270 ksi strands, as shown. The 1" φ rods in the transverse tie assembly shall be tightened to a snug fit and the threads set. Packets that receive transverse tie bar on outside shall be filled with grout after transverse tie assembly is in place. The bearing seat surfaces shall be adjusted by shimming to assure firm and even bearing. Two 1/8" fabric adjusting shims of the dimensions of the Exterior Bearing Pad shall be provided for each bearing. Non Prestressing Steel shall conform to ASTM A708 (IL MOD), Grade 60. Keyway surfaces shall be cleaned to remove form oil or other bond breaking material prior to shipment of the beams. Cleaning shall be done by sandblasting the keyway areas between top of the beam and the bottom edge of the key. Corrosion Inhibitor, per Art. 1020.05(b)(12) of the Standard Specifications, shall be used in the concrete for precast prestressed concrete deck beams. Required Release Strength, f'ci, shall be 4,000 p.s.i.



BAR U₂



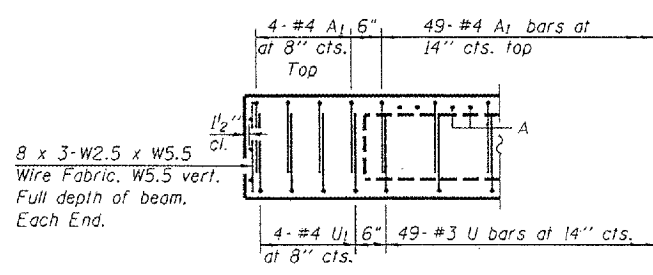
BAR E



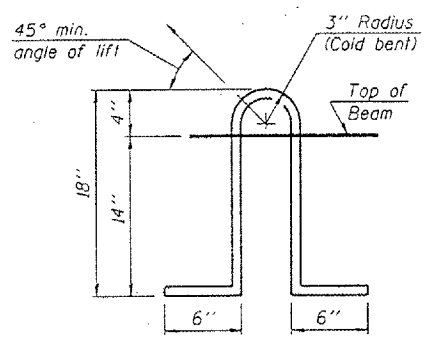
BAR C

BILL OF MATERIAL

Precast Prestressed Concrete Deck Beams (27" Depth)	Sq. Ft.	2066
---	---------	------



END ELEVATION
(Fixed End)



LIFTING LOOP DETAIL

DESIGNED BWP	THOUVENOT, WADE & MOERCHEN, INC. ENGINEERS & ARCHITECTS - PLANNERS CORPORATE OFFICE 1940 OLD COLLINGSVILLE RD. SPRINGFIELD, ILLINOIS 62226 TEL. (618) 624-1488 FAX (618) 624-6888 E-MAIL: CDT@TWM-INC.COM
CHECKED ALN	
DRAWN BWP	
CHECKED KPC	