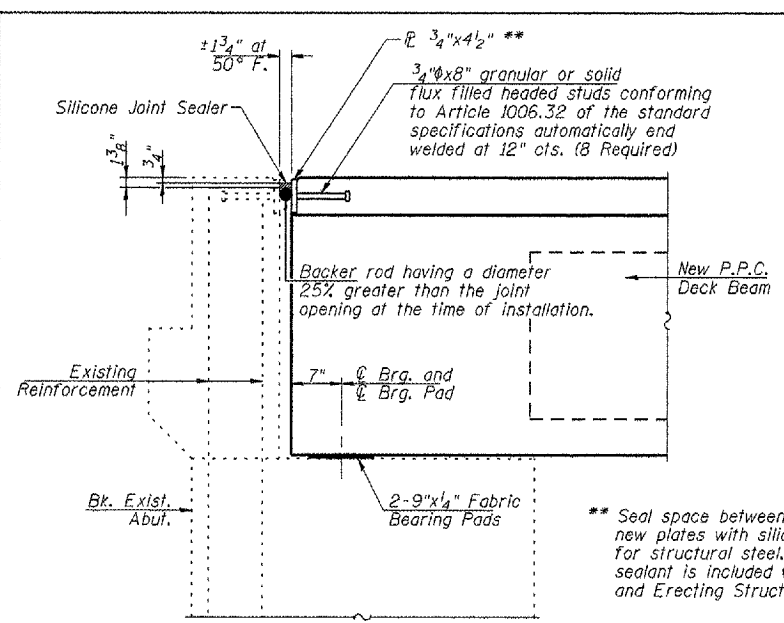


F.A.P. RTE.	SECTION	COUNTY	TOTAL SHEETS	SHEET NO.
317	(45BR)	PEORIA	82	51
STA. TO STA.			FED. AID PROJECT	

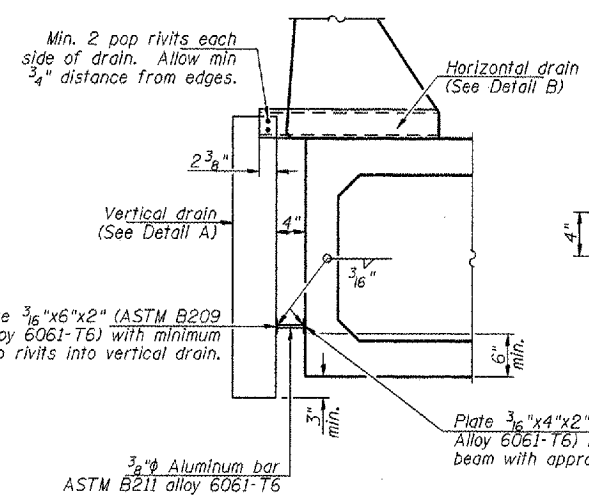


**SECTION THRU ABUTMENT**  
(Beam 8 - Span 1  
Beams 7 & 19 - Span 3)

Notes:  
Existing P.J.S. to be removed and replaced with a Silicone Joint Sealer.  
Cost of Preformed Joint Seal removal included with "Removal of Existing P.P.C. Deck Beams".  
Cut and remove existing 3/4"x4 3/4" within the limits of wearing surface removal on deck side only.  
All horizontal dimensions are at right angles to beam ends.

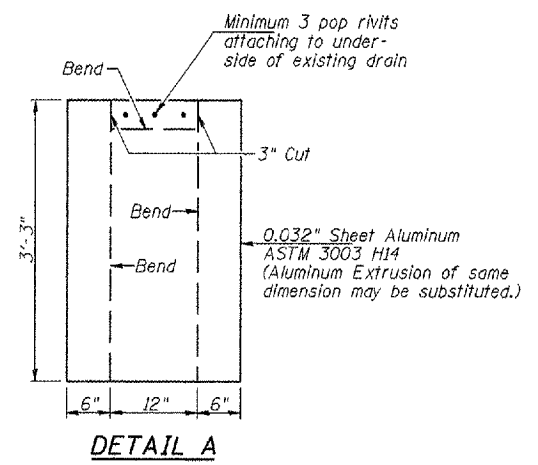
\*\* Seal space between existing and new plates with silicone sealant suitable for structural steel. Cost of silicone sealant is included with "Furnishing and Erecting Structural Steel."

\* 1" Jt. shall be filled with non-shrink grout. 1" dimension may vary to accommodate tolerance in beam lengths.

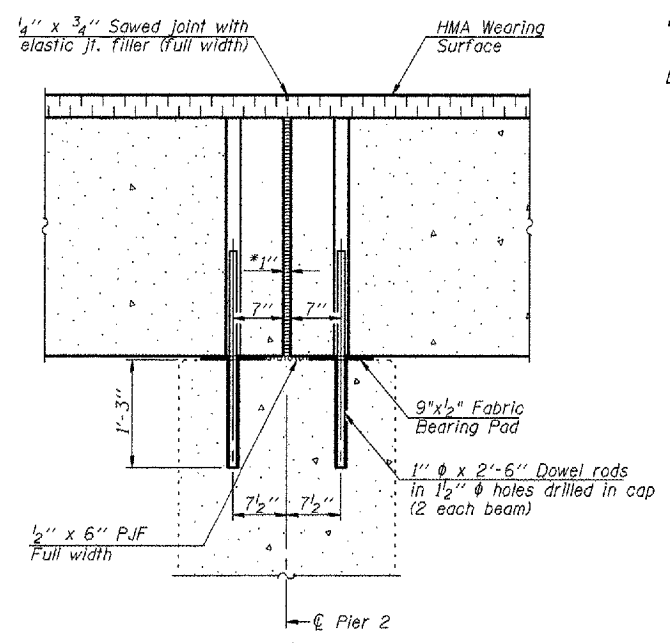


**DRAIN DETAILS**

Notes:  
Drain location to match spacing of existing drains at Beam 1, Spans 2 and 3, and Beam 19, Span 3.  
Cost of drains included with "Concrete Superstructure".

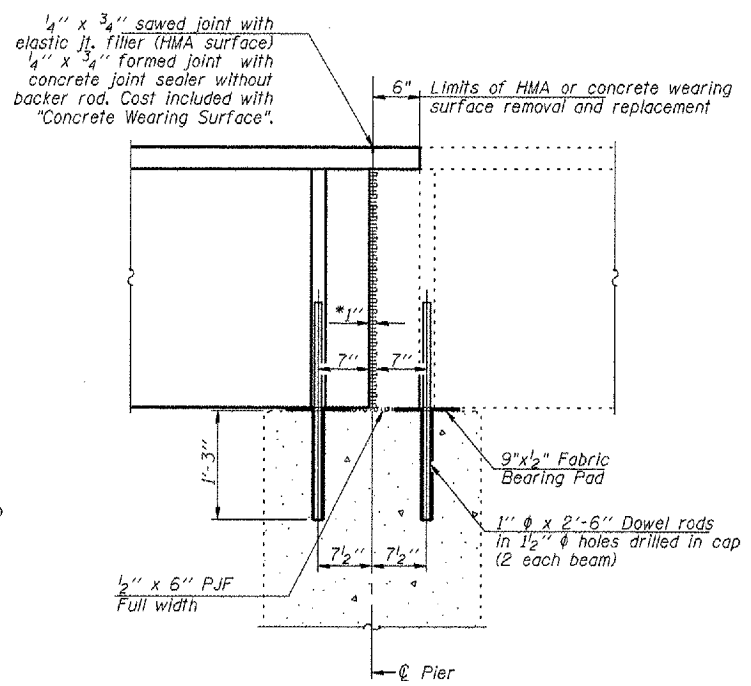


**DETAIL A**

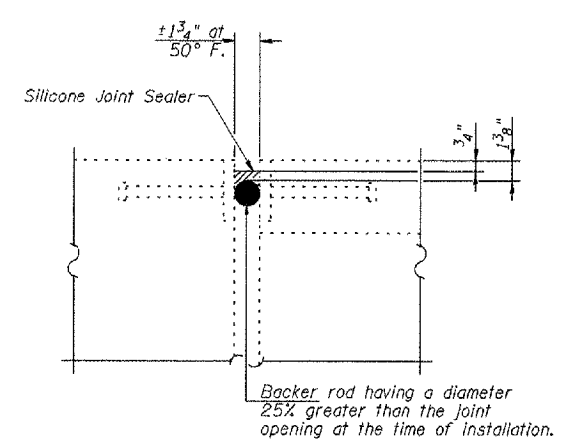


**SECTION THRU PIER 2**  
(Beams 1 & 2)

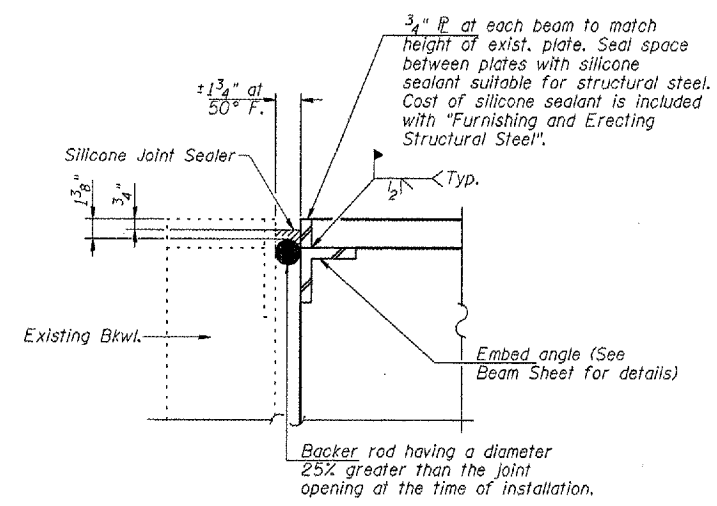
Notes:  
Ends of beams shall be aligned at the expansion joints. Any lineal variation in the beam lengths shall be placed at the fixed joint.  
After beams have been erected, holes shall be drilled into substructure and anchor dowels placed. Dowel holes shall be filled with non-shrink grout to top of beam and allowed to cure min. 24 hrs. prior to grouting the shear keys.  
All horizontal dimensions are at right angles to beam ends. See Beam sheets for bearing pad details.



**SECTION THRU PIER**  
(Pier 1 - Beams 1, 2, 3 and 8  
Pier 2 - Beams 7 and 19)



**JOINT DETAIL AT EXIST BEAMS**  
(West Bound Lanes shown, East Bound Lanes similar)



**JOINT DETAIL**  
(Beams 1 & 2 - West Abutment  
Beam 3 - East Abutment)

**BRIDGE REPAIR DETAILS**  
**U.S. RTE. 24 / IL RTE. 9**  
**OVER LAMARSH CREEK**  
**F.A.P. RTE. 317 - SECTION (45BR) I**  
**PEORIA COUNTY**  
**STA. 337+87.67**  
**S.N. 072-0010**

PLOT DATE \* NOTES \* FILES