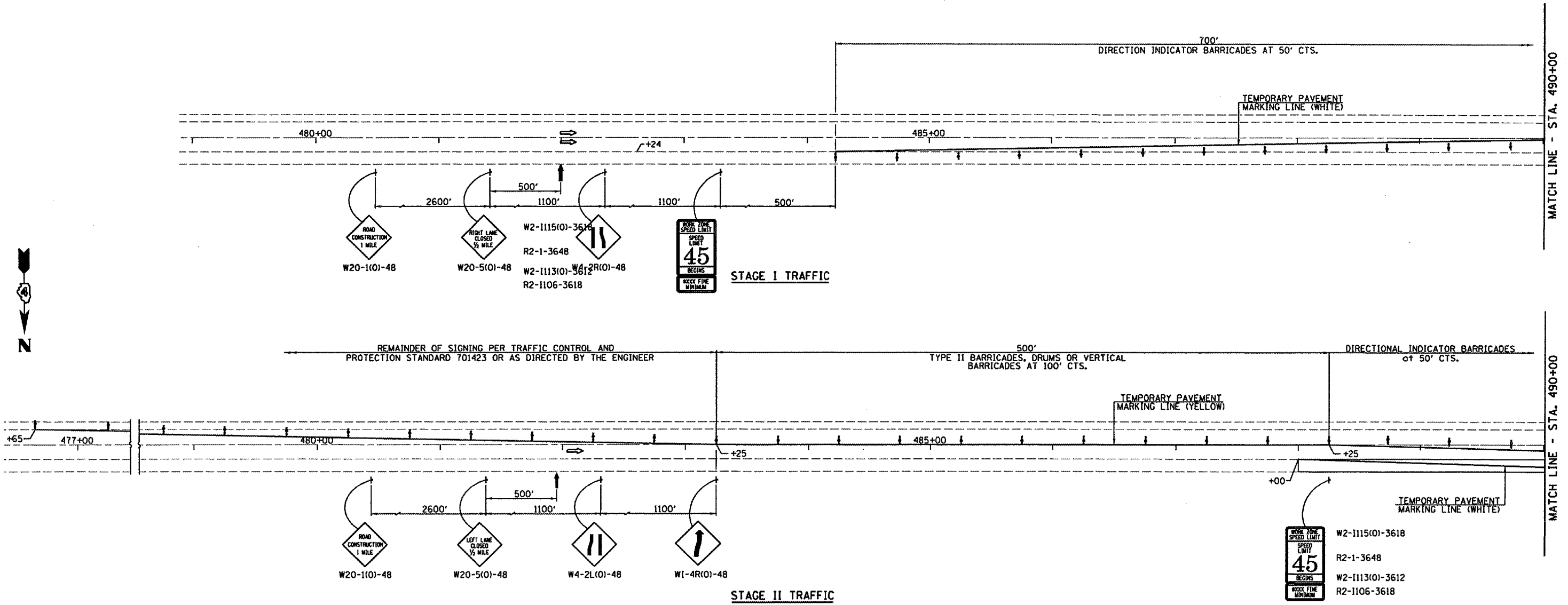


F.A.P. RTE.	SECTION	COUNTY	TOTAL SHEETS	SHEET NO.
317	(45RB)-1	PEORIA	82	55
STA. 492+25 TO STA. 499+50				
FED. ROAD DIST. NO. ILLINOIS FED. AID PROJECT				



**SUGGESTED STAGE CONSTRUCTION SEQUENCE**

**STAGE I**

1. REMOVE EXISTING PAVED SHOULDER AND REPLACE WITH HOT MIX ASPHALT BASE COURSE 9" FROM STA. 488+00 TO STA. 499+25 RT.
2. ERECT TRAFFIC CONTROL FOR STAGE I AND INSTALL TEMPORARY PAVEMENT MARKING.
3. REMOVE EXISTING DECK RIGHT, @ STA. 496+86.55.
4. INSTALL RIPRAP PER GENERAL PLAN & ELEVATION SHEET.
5. CONSTRUCT PROPOSED STAGE I PRECAST PRESTRESSED DECK @ STA. 496+86.55 AND TEMPORARY RAMP.
6. CONSTRUCT TEMPORARY RAMPS AT APPROACH ROADWAY.
7. CONSTRUCT PROPOSED GUARDRAIL & TERMINALS RT.

**STAGE II**

1. ERECT TRAFFIC CONTROL FOR STAGE II AND INSTALL TEMPORARY PAVEMENT MARKING.
2. REMOVE EXISTING DECK LEFT, @ STA. 496+86.55.
3. INSTALL RIPRAP PER GENERAL PLAN & ELEVATION SHEET.
4. CONSTRUCT TEMPORARY RAMPS AT APPROACH ROADWAY.
5. CONSTRUCT PROPOSED GUARDRAIL & TERMINALS LT.

**GENERAL NOTES**

1. THIS TRAFFIC CONTROL DETAIL SHALL BE USED IN CONJUNCTION WITH STANDARD 701423.
2. EXISTING PAVEMENT MARKINGS THAT CONFLICT WITH THE REVISED STAGE TRAFFIC PATTERNS DURING ALL PHASES OF STAGE CONSTRUCTION SHALL BE REMOVED AS SPECIFIED IN SECTION 783 OF THE STANDARD SPECIFICATIONS AND PAID FOR AS "PAVEMENT MARKING REMOVAL".
3. THE CONTRACTOR SHALL MAINTAIN ACCESS TO ALL PRIVATE AND COMMERCIAL PROPERTIES DURING ALL PHASES OF CONSTRUCTION.
4. SIGNING FOR STAGE II SAME AS STAGE I.
5. LANE CLOSURES SHALL BE COORDINATED WITH PATCHING AND OVERLAY OPERATIONS.

**FINAL**

1. REMOVE ALL STAGE TRAFFIC CONTROL AND RE-ESTABLISH NORMAL TRAFFIC PATTERNS.
2. COMPLETE HOT MIX ASPHALT BINDER AND SURFACE COURSE ON APPROACH ROADWAY UNDER TRAFFIC WITH FLAGGERS.
3. FINAL STRIPING AND MISCELLANEOUS CLEANUP.

**SCHEDULE**  
PAVED SHOULDER REMOVAL & HOT MIX ASPHALT BASE COURSE 9"  
(TO BE USED FOR SHOULDER REPLACEMENT)

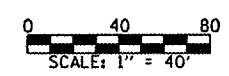
LOCATION STATION TO STATION	PAVED SHOULDER REMOVAL (SQ. YD.)	H.M.A. BASE COURSE 9" (SQ. YD.)
STA. 488+00 TO STA. 499+25 RT.	1250	1250
TOTAL	1250	1250

**SYMBOLS**

- ↑ ARROW BOARD
- ▨ WORK AREA
- ⊥ SIGN
- DRUM WITH STEADY BURN MONODIRECTIONAL LIGHT
- IMPACT ATTENUATOR
- VERTICAL PANEL WITH STEADY BURN MONODIRECTIONAL LIGHT
- ⊥ TYPE II BARRICADE, DRUM OR VERTICAL BARRICADE WITH STEADY BURN MONODIRECTIONAL LIGHT
- ⊥ DIRECTION INDICATOR BARRICADE WITH STEADY BURN MONODIRECTIONAL LIGHT
- ◁ TYPE C MONODIRECTIONAL REFLECTOR

NOTE: WORK THIS SHEET WITH THE FOLLOWING SHEET.

**STAGE CONSTRUCTION TRAFFIC DETAILS**  
F.A.P. ROUTE 317 - (U.S. 24)  
OVER LITTLE LAMARSH CREEK  
SECTION (45RB)-1  
PEORIA COUNTY  
S.N. 072-0136



FILE NAME: SCTD 2-3 (REV. 1/31/07)