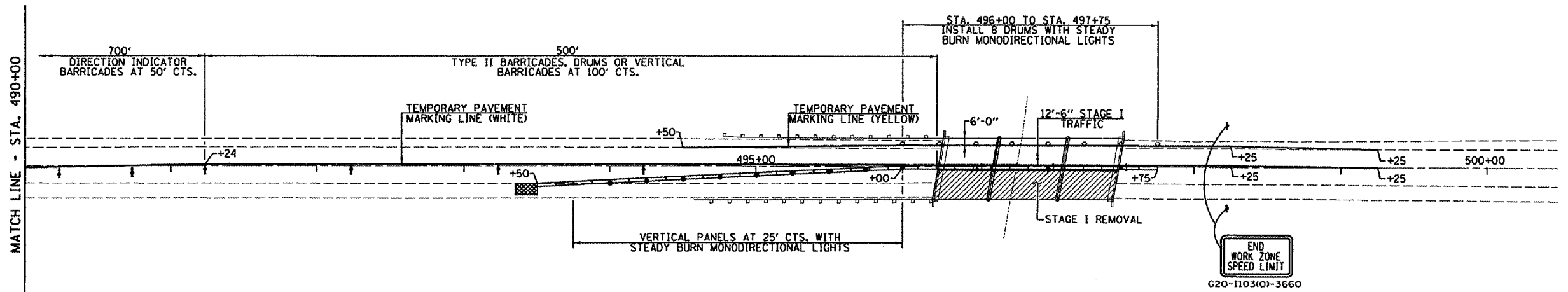
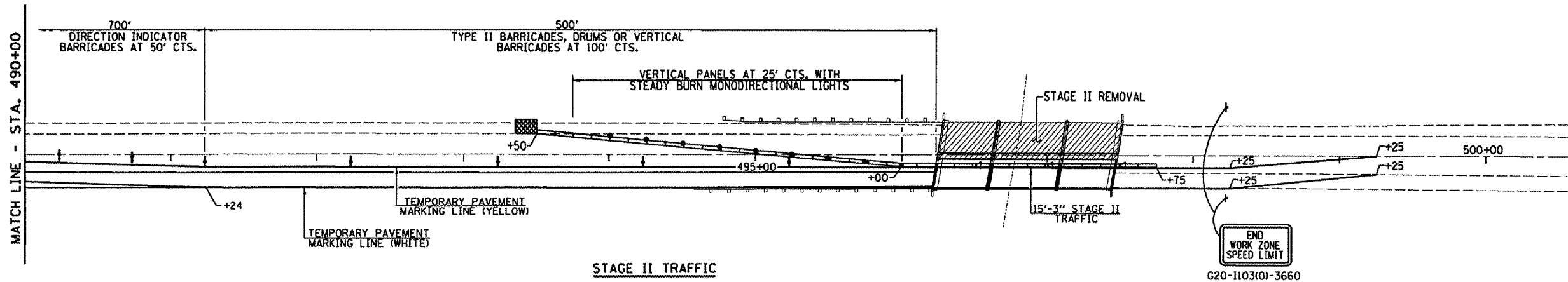


F.A.P. RTE.	SECTION	COUNTY	TOTAL SHEETS	SHEET NO.
317	(45RB)-1	PEORIA	82	56
STA. 492+25 TO STA. 499+50				
FED. ROAD DIST. NO. ILLINOIS FED. AID PROJECT				



STAGE I TRAFFIC



STAGE II TRAFFIC

SCHEDULE
TEMPORARY PAVEMENT MARKING &
WORK ZONE PAVEMENT MARKING REMOVAL

LOCATION STATION TO STATION	TEMP. PAV'T. MARKING LINE - 4" WHITE (FOOT)	TEMP. PAV'T. MARKING LINE - 4" YELLOW (FOOT)	WORK ZONE PAVEMENT MARKING REMOVAL (SQ. FT.)
STAGE I			
STA. 484+25 TO STA. 499+25 C	1500		495
STA. 493+50 TO STA. 499+25 EDGE		575	190
STAGE II			
STA. 484+25 TO STA. 499+25 C		1500	495
STA. 488+00 TO STA. 499+25 EDGE	1125		371
SUB-TOTAL	2625	2075	1551
TOTAL	4600		1551

TRAFFIC CONTROL SCHEDULE

LOCATION STATION TO STATION	TEMP. CONC. BARRIER (FOOT)	RELOCATE TEMP. CONC. BARRIER (FOOT)	IMPACT ATTENUATOR TEMPORARY (EACH)	RELOCATE IMPACT ATTENUATOR (EACH)	TRAFFIC CONT. AND PROTECT. STD. 701423 (EACH)
STAGE I					
STA. 493+35 RT.			1		
STA. 493+50 TO STA. 497+75	425				
STAGE II					
STA. 493+35 LT.				1	
STA. 493+50 TO STA. 497+75		425			
TOTAL	425	425	1	1	1

PAVEMENT MARKING SCHEDULE

LOCATION STATION TO STATION	LENGTH (FOOT)	PAVEMENT MARKING REMOVAL	
		WHITE (SQ. FT.)	WHITE SKIP DASH (SQ. FT.)
STA. 496+24.05 TO STA. 497+49.05 LT. & RT. (EDGE)	125		
STA. 493+50 TO STA. 499+25 LT. (EDGE) ST. I	575	190	
STA. 484+24 TO STA. 496+24 (C) ST. I	1200		99
STA. 488+00 TO STA. 499+25 RT. (EDGE) ST. II	1125	371	
STA. 476+65 TO STA. 484+24 (C) ST. II	759		63
TOTAL		723	

SYMBOLS

- ↑ ARROW BOARD
- ▨ WORK AREA
- ⊥ SIGN
- DRUM WITH STEADY BURN MONODIRECTIONAL LIGHT
- IMPACT ATTENUATOR
- VERTICAL PANEL WITH STEADY BURN MONODIRECTIONAL LIGHT
- ↓ TYPE II BARRICADE, DRUM OR VERTICAL BARRICADE WITH STEADY BURN MONODIRECTIONAL LIGHT
- ⊥ DIRECTION INDICATOR BARRICADE WITH STEADY BURN MONODIRECTIONAL LIGHT
- ◁ TYPE C MONODIRECTIONAL REFLECTOR

NOTE: WORK THIS SHEET WITH THE PREVIOUS SHEET.

STAGE CONSTRUCTION TRAFFIC DETAILS
E.A.P. ROUTE 317 - (U.S. 24)
OVER LITTLE LAMARSH CREEK
SECTION (45RB)-1
PEORIA COUNTY
S.N. 072-0136

