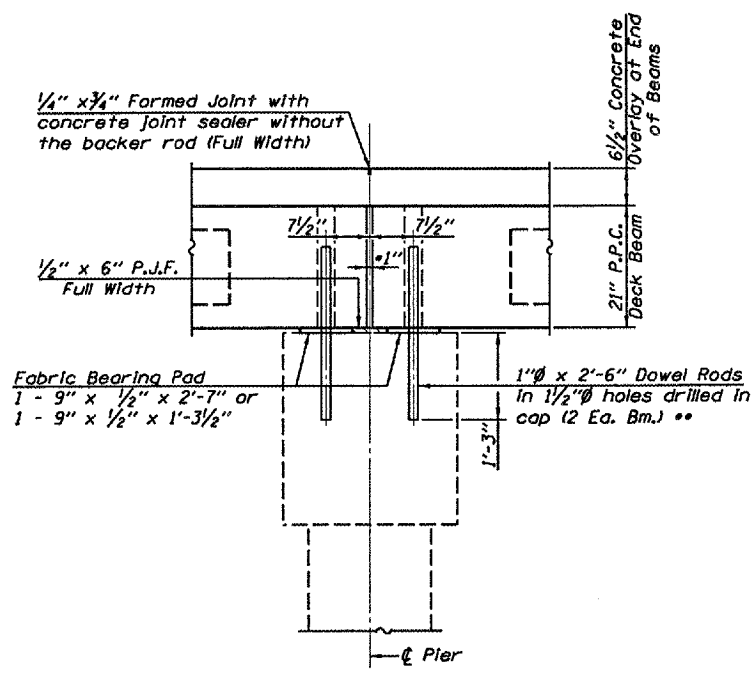


ROUTE NO.	SECTION	COUNTY	TOTAL SHEETS	SHEET NO.
F.A.P. 317	(45-RB)-1	PEORIA	82	63
FED. ROAD DIST. NO.	ILLINOIS	FED. AID PROJECT		
CONTRACT NO. 68456				

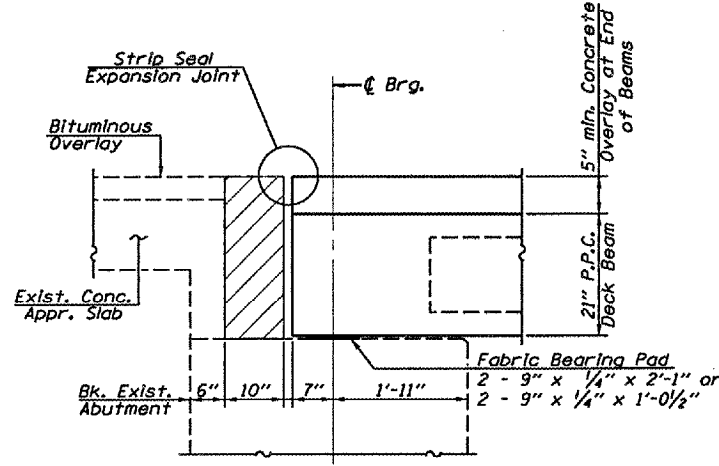
SHEET NO. 7  
OF 14 SHEETS



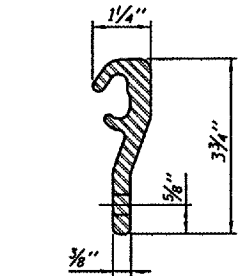
**SECTION THRU PIERS**

- 1" Joint shall be filled with non-shrink grout. 1" Dimension may vary to accommodate tolerance in beam lengths.
- Existing dowel rods shall be cut off and ground flush with the top of existing concrete. Cost to be included with "Removal of Existing Superstructures".

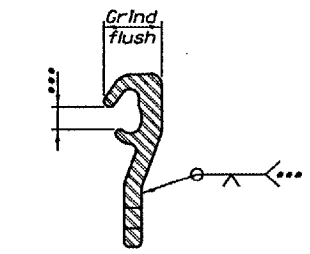
**Notes :**  
 After beams have been erected, holes shall be drilled into substructure and anchor dowels placed. Dowel holes shall be filled with non-shrink grout to top of beam and allowed to cure min. 24 hrs. prior to grouting the shear keys.  
 Hatched area to be poured after concrete wearing surface is in place.  
 See sheet 5 of 14 for bearing pad details.



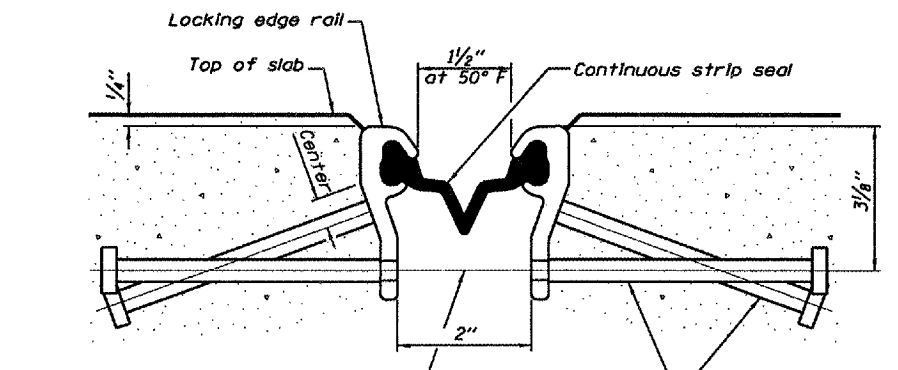
**SECTION THRU ABUTMENT (At Rt. L's)**



**LOCKING EDGE RAIL**



**LOCKING EDGE RAIL SPLICE**

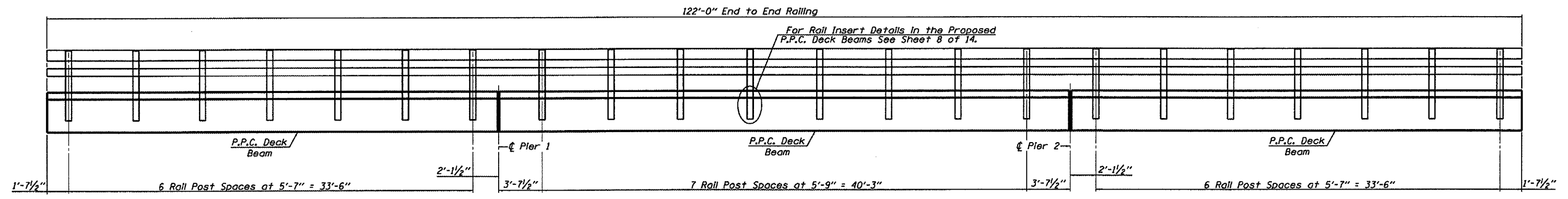


**SECTION THRU STRIP SEAL JOINT FOR OVERLAY OVER DECK BEAMS**  
(17 Studs Stage I, 25 Studs Stage II)

1/8"  $\phi$  holes at 4'-0" cts. for 3/8"  $\phi$  bolts. All bolts shall be burned, sawed, or chipped off flush with the plates after forms are removed, typ.

Place 1/2"  $\phi$  x 6" granular or solid flux filled headed studs conforming to Article 1006.32 of the Std. Specs., automatically end welded at 1'-0" alt. cts.

**Notes:**  
 The strip seal shall be made continuous and shall have a minimum thickness of 1/4". The configuration of the strip seal shall match the configuration of the Locking Edge Rails.  
 Strip seal to extend 12" beyond edge of deck (both ends).  
 The height and thickness of the Locking Edge Rails shown are minimum dimensions. The actual configuration of the Locking Edge Rails and matching strip seal may vary from manufacturer to manufacturer. Flanged edge rails will not be allowed.  
 The inside of the Locking Edge Rail groove shall be free of weld residue.  
 Locking Edge Rails may be spliced at slope discontinuities and stage construction joints.  
 The manufacturer's recommended installation methods shall be followed.  
 The joint opening and deck dimensions detailed on the superstructure are based on a rolled rail expansion joint. If the Contractor elects to use the welded rail expansion joint, the opening and deck dimensions shall be modified according to the dimensions detailed on this sheet. Required modifications shall be made at no additional cost to the State.  
 After fabrication, the steel locking edge rail assembly shall be hot dip galvanized according to AASHTO M111 and ASTM A123.



**RAIL POST SPACING FOR STEEL BRIDGE RAIL**

**SUPERSTRUCTURE DETAILS**  
 U.S. ROUTE 24 OVER  
 LITTLE LOMARSH CREEK  
 F.A.P. RTE. 317 - SECTION (45-RB)-1  
 PEORIA COUNTY  
 STA. 496+86.55  
 S.N. 072-0136

FILE NAME: STRUCTURE PLANS (REV. 2/1/07)