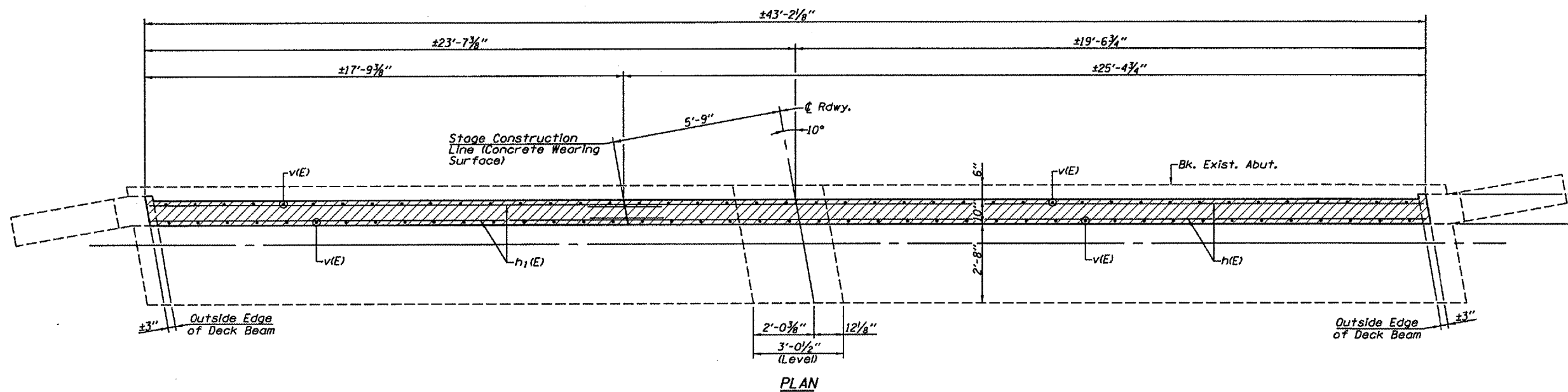
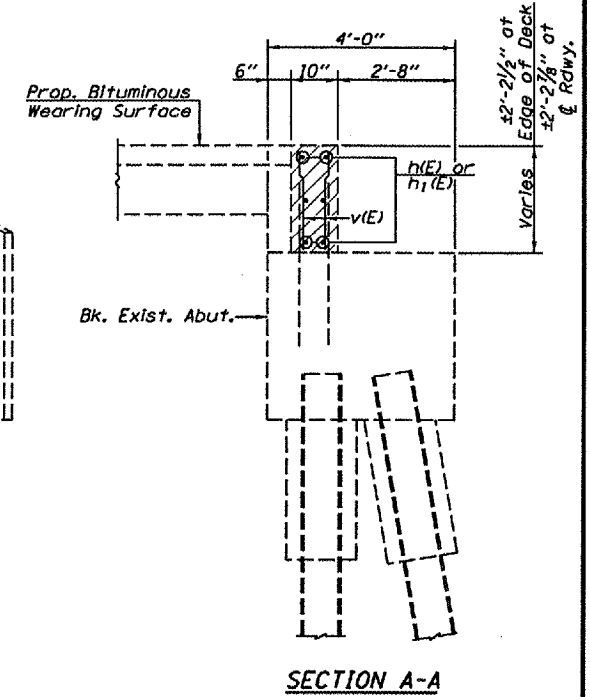
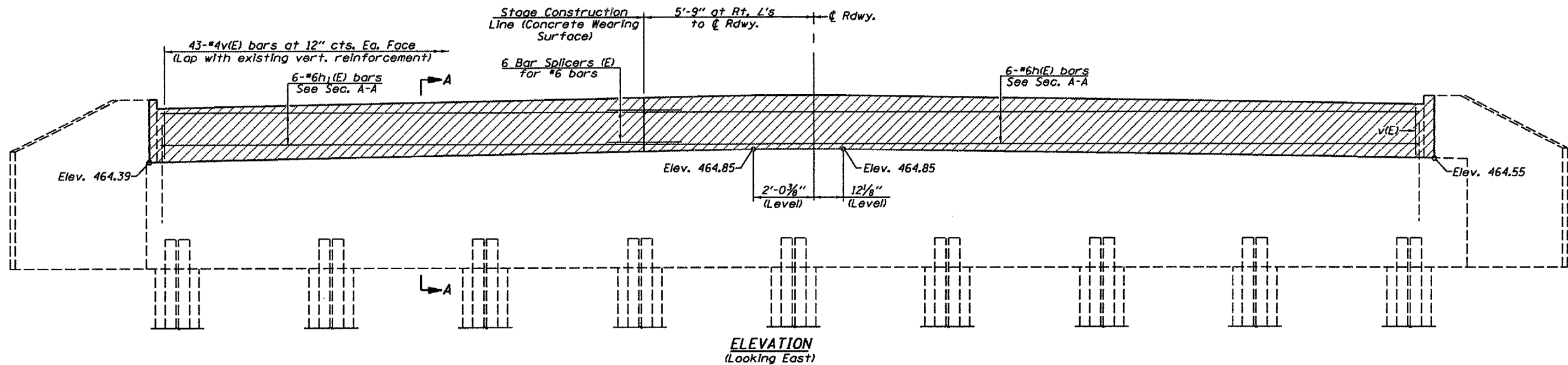


ROUTE NO.	SECTION	COUNTY	TOTAL SHEETS	SHEET NO.
F.A.P. 317	(45-RBJI-1)	PEORIA	82	67
FED. ROAD DIST. NO.	ILLINOIS	FED. AID PROJECT		
CONTRACT NO. 68456				

SHEET NO. 11
OF 14 SHEETS



BILL OF MATERIAL

Bar	No.	Size	Length	Shape
h(E)	6	#6	25'-0"	—
h1(E)	6	#6	17'-5"	—
v(E)	86	#4	2'-1"	—
Reinforcement Bars, Epoxy Coated			Pound	505
Bar Splicers			Each	6
Concrete Structures			Cu. Yd.	3.0

Reinforcement bars designated (E) shall be Epoxy Coated.

EAST ABUTMENT
U.S. ROUTE 24 OVER
LITTLE LOMARSH CREEK
F.A.P. RTE. 317 - SECTION (45-RBJI-1)
PEORIA COUNTY
STA. 496+86.55
S.N. 072-0136

Note: Hatched area to be placed after wearing surface is in place.

FILE NAME: STRUCTURE PLANS (REV. 2/1/07)