

**STATE OF ILLINOIS
DEPARTMENT OF TRANSPORTATION**

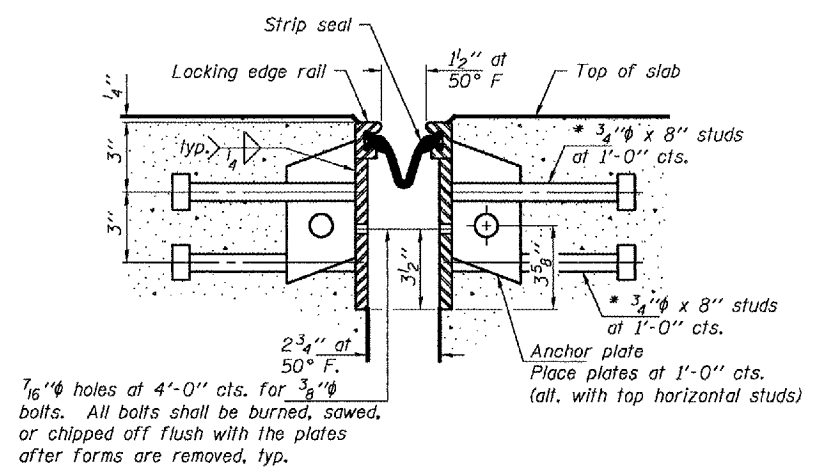
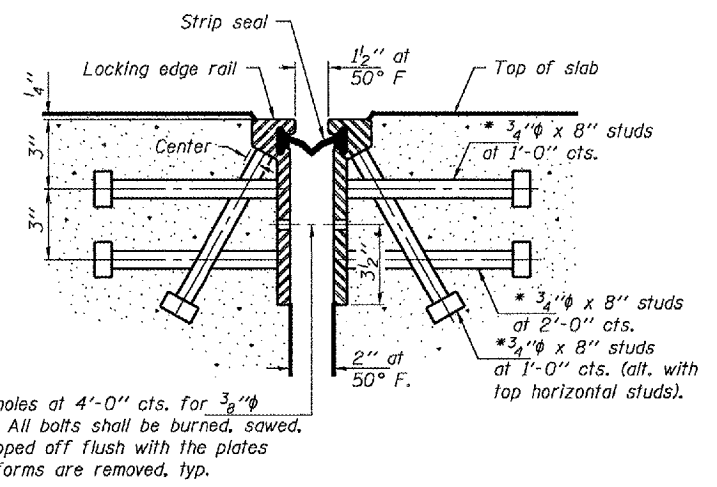
ROUTE NO.	SECTION	COUNTY	TOTAL SHEETS	SHEET NO.
US 150/24		PEORIA TAZEWELL	22	21
FED. ROAD DIST. NO. 7	ILLINOIS	FED. AID PROJECT		

SHEET NO. 6
7 SHEETS

Contract Number: 68695

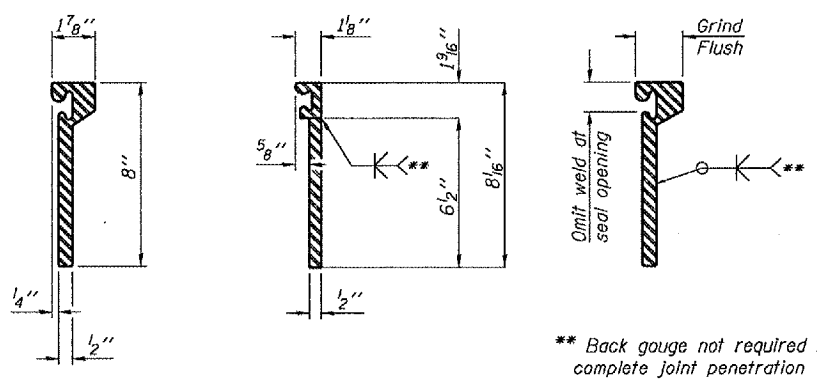
* Granular or solid flux filled headed studs conforming to Article 1006.32 of the Std. Specs., automatically end welded.

Notes:
The strip seal shall be made continuous and shall have a minimum thickness of 1/4". The configuration of the strip seal shall match the configuration of the Locking Edge Rails. Open or "webbed" strip seal gland configurations are not permitted. The gland shall be sized for a maximum rated movement of 4 inches.
The height and thickness of the Locking Edge Rails shown are minimum dimensions. The actual configuration of the Locking Edge Rails and matching strip seal may vary from manufacturer to manufacturer. Flanged edge rails will not be allowed. Locking Edge Rails may be spliced at slope discontinuities and stage construction joints.
The manufacturer's recommended installation methods shall be followed.
The joint opening and deck dimensions detailed on the superstructure are based on a rolled rail expansion joint. If the Contractor elects to use the welded rail expansion joint, the opening and deck dimensions shall be modified according to the dimensions detailed on this sheet. Required modifications shall be made at no additional cost to the State.
All steel components shall be galvanized after fabrication according to Article 520.03 of the Standard Specifications.

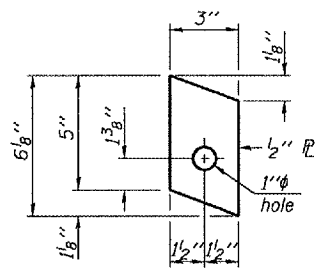


**SECTION THRU
ROLLED RAIL JOINT**

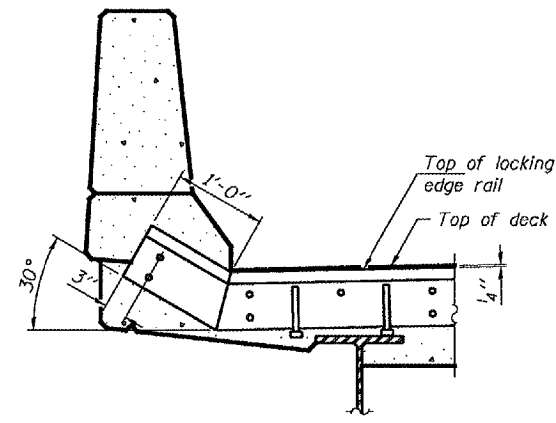
**SECTION THRU
WELDED RAIL JOINT**



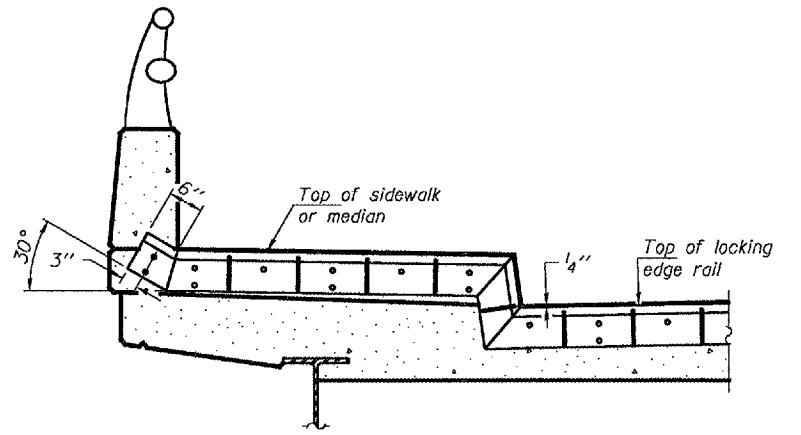
**ROLLED
(EXTRUDED) RAIL WELDED RAIL**



**ANCHOR PLATE
(for welded rail)**



AT PARAPET



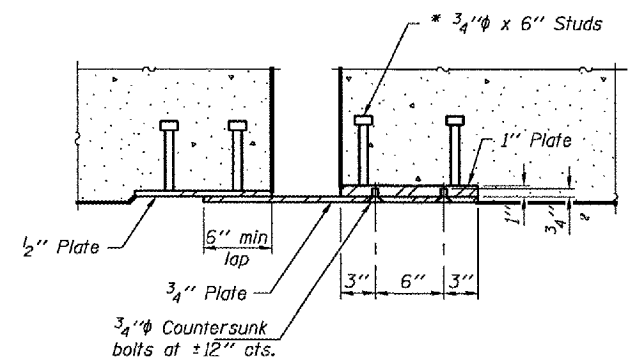
AT SIDEWALK OR MEDIAN

Shorter plates with a single row of studs at 12" cts. may be necessary on medians which are shallower than 9". See manufacturer's recommendation.

LOCKING EDGE RAIL SPLICE

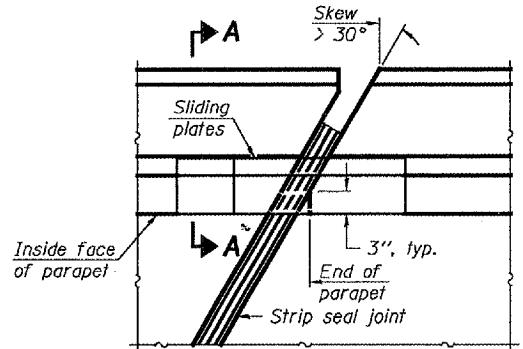
The inside of the locking edge rail groove shall be free of weld residue.

TYPICAL END TREATMENTS

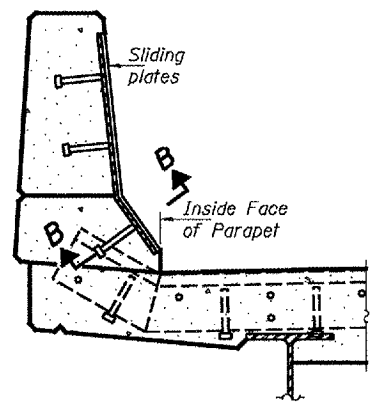


SECTION B-B

LOCKING EDGE RAILS



PLAN



SECTION A-A

**POINT BLOCK DETAILS
(for skews > 30°)**

BILL OF MATERIAL

Item	Unit	Total
Preformed Joint Strip Seal	Foot	408

DESIGNED	AJB
CHECKED	SJB
DRAWN	ballva
CHECKED	AJB SJB

APRIL 24, 2007
EXAMINED *Carl Proyer*
REPAIR PLANS UNIT CHIEF
PASSED *Ralph E. Anderson*
ENGINEER OF BRIDGES AND STRUCTURES

**PREFORMED JOINT STRIP SEAL
FAP 317
PEORIA/TAZEWELL COUNTIES
SN 090-0115**