

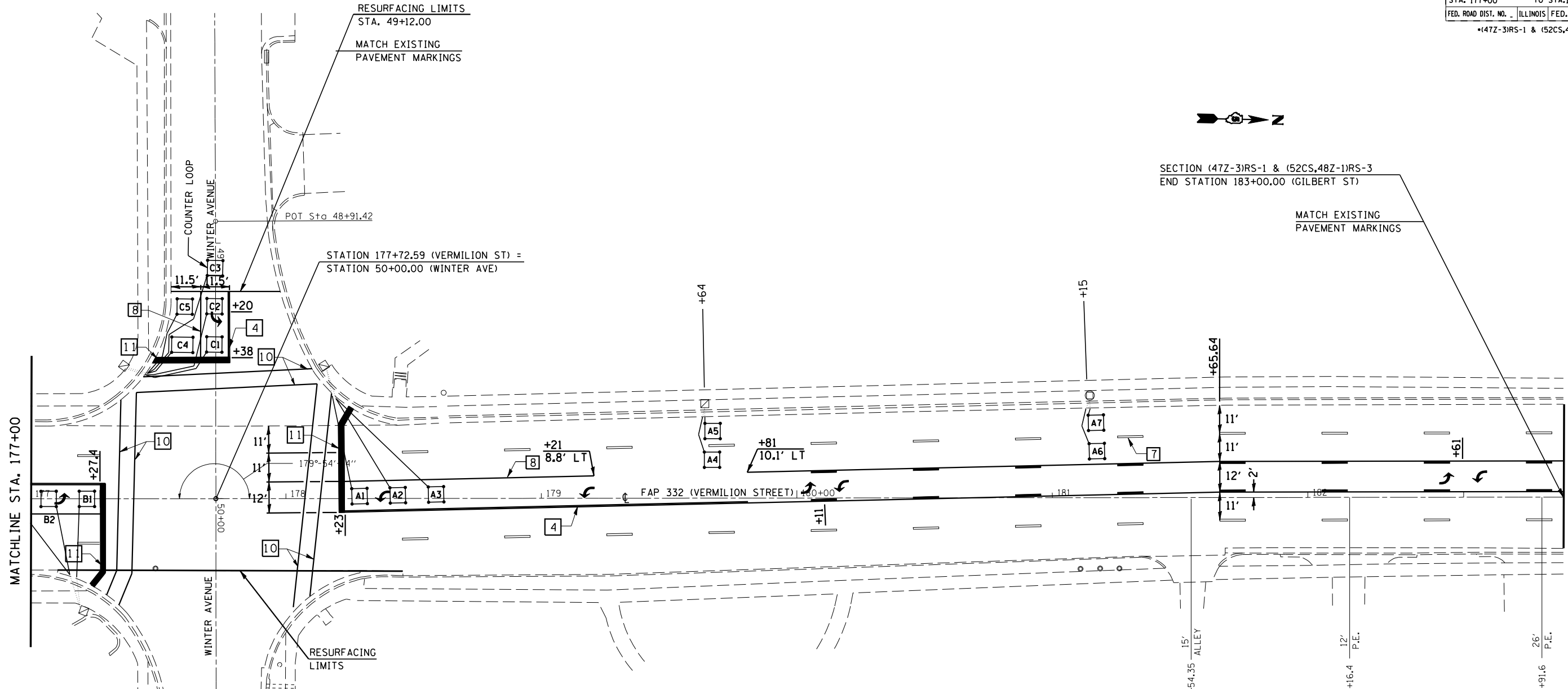
T 20 N, R 11 W, SEC. 32, 2ND P.M.

CONTRACT NO. 70185				
F.A.P. RTE.	SECTION	COUNTY	TOTAL SHEETS	SHEET NO.
332	.	VERMILION	62	55
STA. 177+00		TO STA. 183+00		
FED. ROAD DIST. NO.		ILLINOIS	FED. AID PROJECT	
*(47Z-3)RS-1 & (52CS,48Z-1)RS-3				

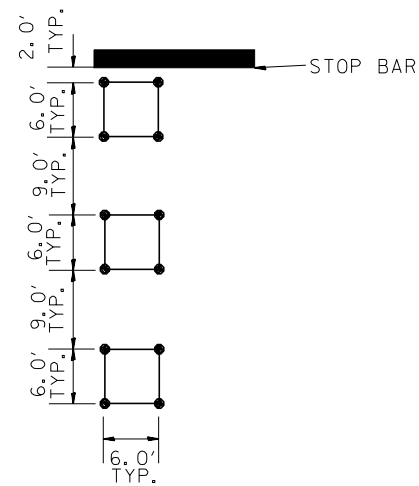


SECTION (47Z-3)RS-1 & (52CS,48Z-1)RS-3
END STATION 183+00.00 (GILBERT ST)

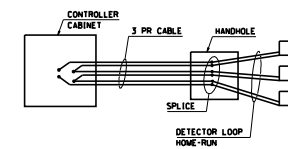
MATCH EXISTING
PAVEMENT MARKINGS



DETECTOR LOOP LAYOUT



DETAIL OF DETECTOR LOOP WIRING
WIRED IN SERIES WITH MULTI-PAIR CABLE



DETECTOR LOOP DATA		
WINTER AVE.		
LOOP	SIZE	TURNS
A1-3	6	4
A4-5	6	5
A6-7	6	6
B1-3	6	4
B4-5	6	4
B6-7	6	5
C1-2	6	4
C3-4	6	4

REVISIONS	
NAME	DATE

ILLINOIS DEPARTMENT OF TRANSPORTATION

ROADWAY PLANS

SCALE: VERT.
HORIZ.
DATE

DRAWN BY
CHECKED BY