

F.A.S. RTE.	SECTION	COUNTY	TOTAL SHEETS	SHEET NO.
518	(38Q)RS	CHAMPAIGN	38	1

STATE OF ILLINOIS
DEPARTMENT OF TRANSPORTATION

DIVISION OF HIGHWAYS

**PROPOSED
HIGHWAY PLANS**

FAS ROUTE 518 (CH 22)

SECTION (38Q)RS

RESURFACING (3P)

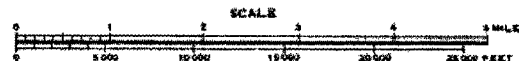
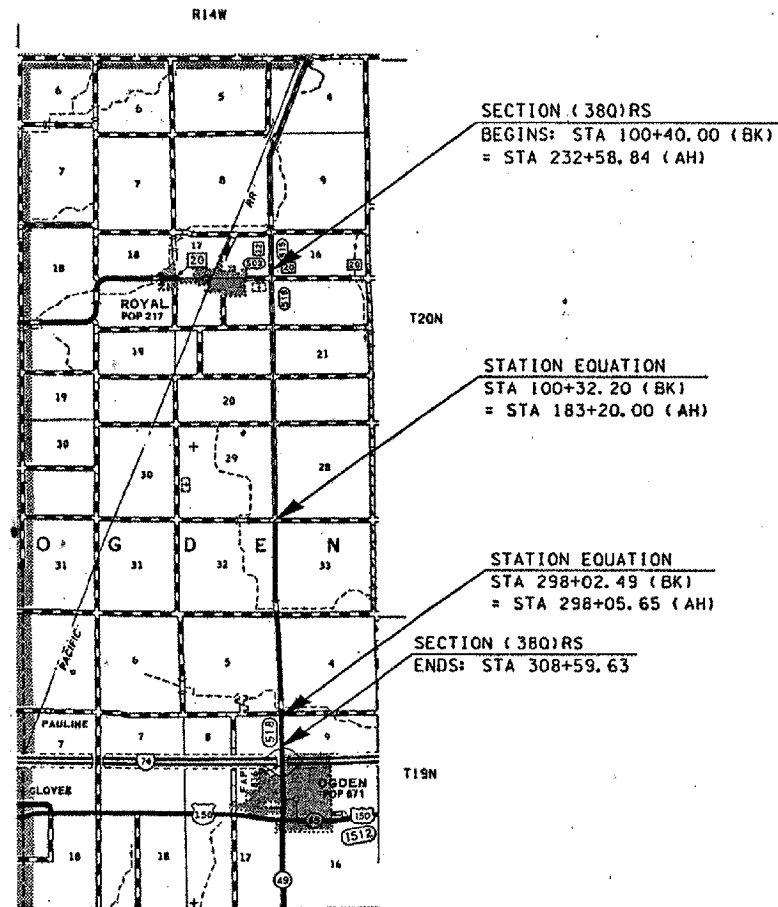
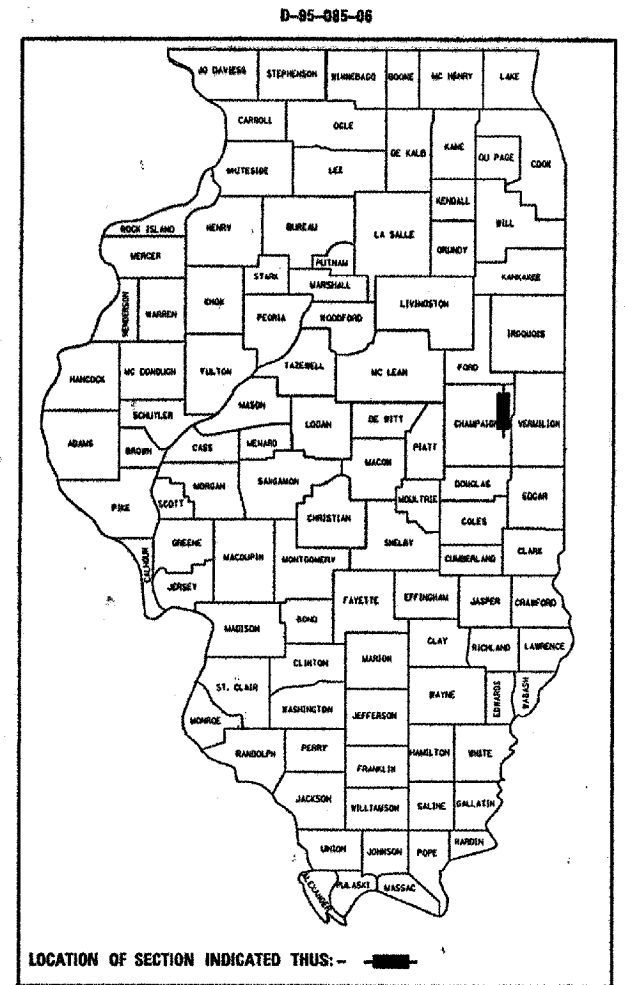
FROM ROYAL RD TO I-74 N OF OGDEN

CHAMPAIGN COUNTY

PROJECT RS-0518 (103)

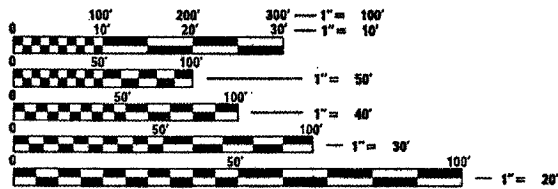
C-95-085-06

FOR INDEX OF SHEETS, SEE SHEET NO. 2
FOR SUMMARY OF QUANTITIES, SEE SHEET NO. 4-5



TOTAL LENGTH OF SECTION & PROJECT = 25763.11 FEET = 4.879 MILES
NET LENGTH OF SECTION & PROJECT = 25763.11 FEET = 4.879 MILES

DESIGN DESIGNATION
ADT = 1350(2006) RURAL MAJOR COLLECTOR - I-74 TO 1.5 MI N OF I-74 - NA
ADT = 850(2006) RURAL MAJOR COLLECTOR - 1.5 MI N OF I-74 TO ROYAL RD- NA



FULL SIZE PLANS HAVE BEEN PREPARED USING STANDARD ENGINEERING SCALES. REDUCED SIZED PLANS WILL NOT CONFORM TO STANDARD SCALES. IN MAKING MEASUREMENTS ON REDUCED PLANS, THE ABOVE SCALES MAY BE USED.

J.U.L.I.E.
JOINT UTILITY LOCATION INFORMATION FOR EXCAVATION
1-800-892-0123

STATE OF ILLINOIS
DEPARTMENT OF TRANSPORTATION
DIVISION OF HIGHWAYS

SUBMITTED March 22, 2007

[Signature]
DEPUTY DIRECTOR OF HIGHWAYS, REGION 3 ENGINEER

May 11, 2007
[Signature]
INTERIM ENGINEER OF DESIGN AND ENVIRONMENT

May 11, 2007
[Signature]
DIRECTOR OF HIGHWAYS, CHIEF ENGINEER

**PRINTED BY THE AUTHORITY
OF THE STATE OF ILLINOIS**