

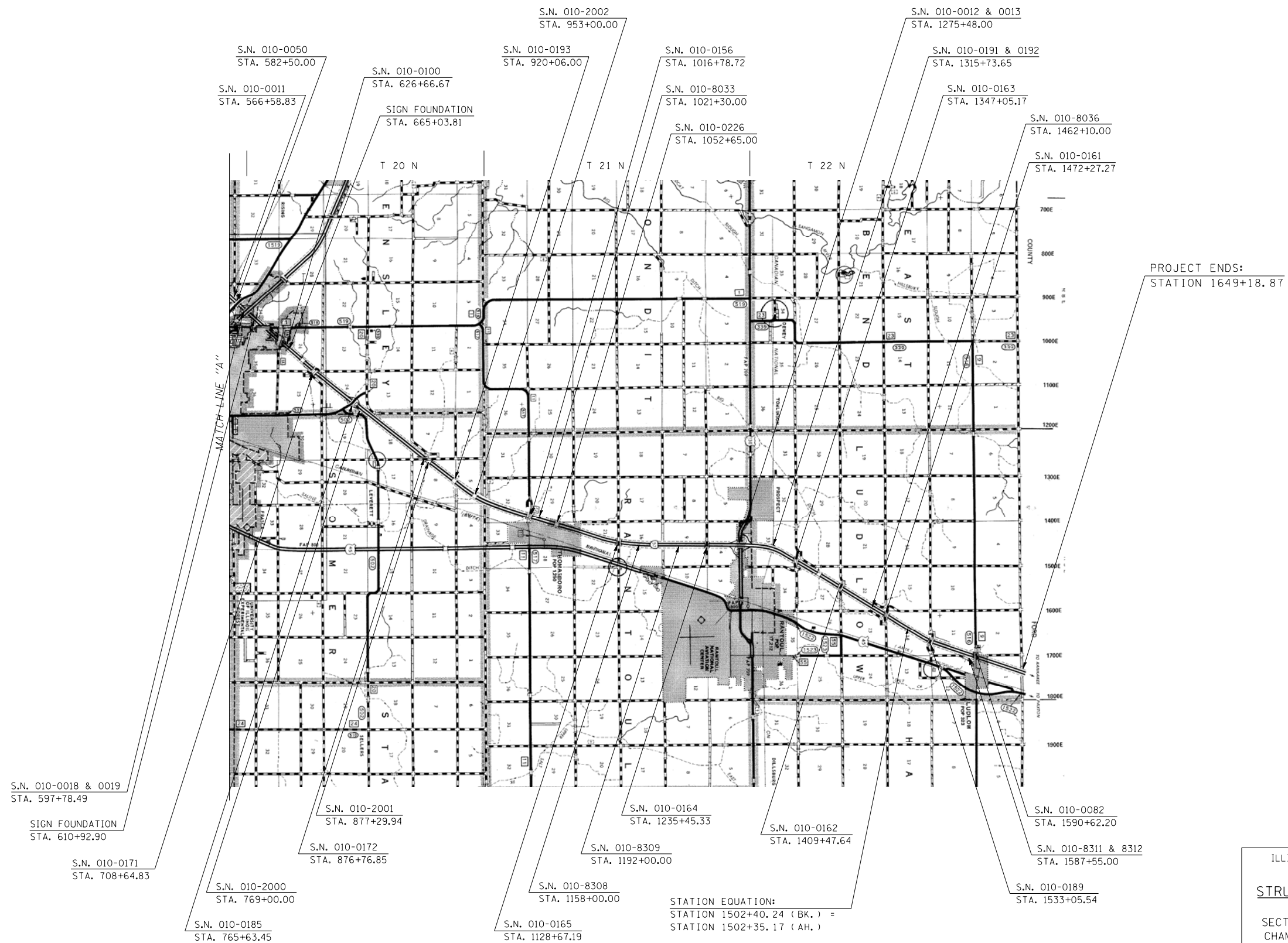
F.A.I. RTE.	SECTION	COUNTY	TOTAL SHEETS	SHEET NO.
57	•	••	153	8

LOCATION MAP OF STRUCTURES IN CHAMPAIGN COUNTY

PAGE 2 OF 2

STA.	TO STA.
FED. ROAD DIST. NO.	ILLINOIS FED. AID PROJECT

- D5 SAFETY IMPROVEMENT 2007-2
- CHAMPAIGN, COLES, & DOUGLAS



PLOT DATE = 3/30/2007
 FILE NAME = c:\p\projects\d5\1406 (v8)\70628\sheet8.dgn
 PLOT SCALE = 42.3523 / IN.
 USER NAME = pier-sonbr

ILLINOIS DEPARTMENT OF TRANSPORTATION
LOCATION MAP
STRUCTURES IN CHAMPAIGN COUNTY
 F.A.I. ROUTE 57 (I-57)
 SECTION D5 SAFETY IMPROVEMENT 2007-2
 CHAMPAIGN, COLES, & DOUGLAS COUNTIES

SCALE: NOT TO SCALE
 DATE: 02/23/07

DRAWN BY: B.B.P.
 CHECKED BY: M.L.B.