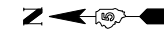
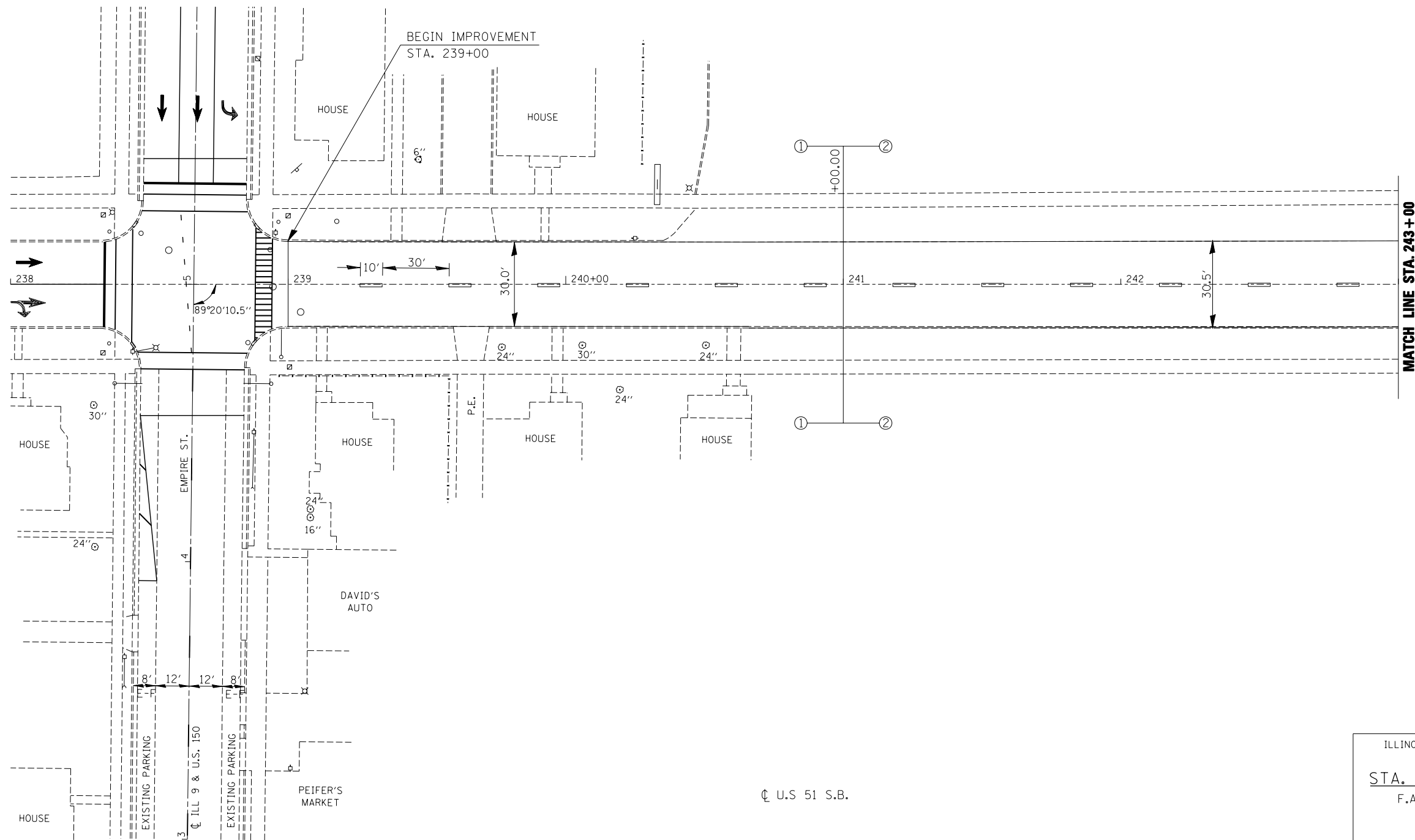
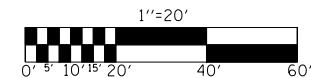


F.A.P. RTE.	SECTION	COUNTY	TOTAL SHEETS	SHEET NO.
730	62RS-2	McLEAN	17	10
STA. 239+00.00		TO STA. 243+00.00		
FED. ROAD DIST. NO.	ILLINOIS	FED. AID PROJECT		



SEC. 62, T 23 N, R 2 E , 3rd P.M.



PLOT DATE = 3/27/2007
 FILE NAME = G:\projects\view\d0607 (v8)\allsheets.dgn
 USER NAME = piersonbr

ILLINOIS DEPARTMENT OF TRANSPORTATION
PLAN VIEW
 STA. 238+00 TO STA. 243+00
 F.A.P. ROUTE 730 (U.S. 51 S.B.)
 SECTION 62RS-2
 McLEAN COUNTY

SCALE: NOT TO SCALE
 DATE: 03/26/07

DRAWN BY: B.B.P.
 CHECKED BY: B.C.S.