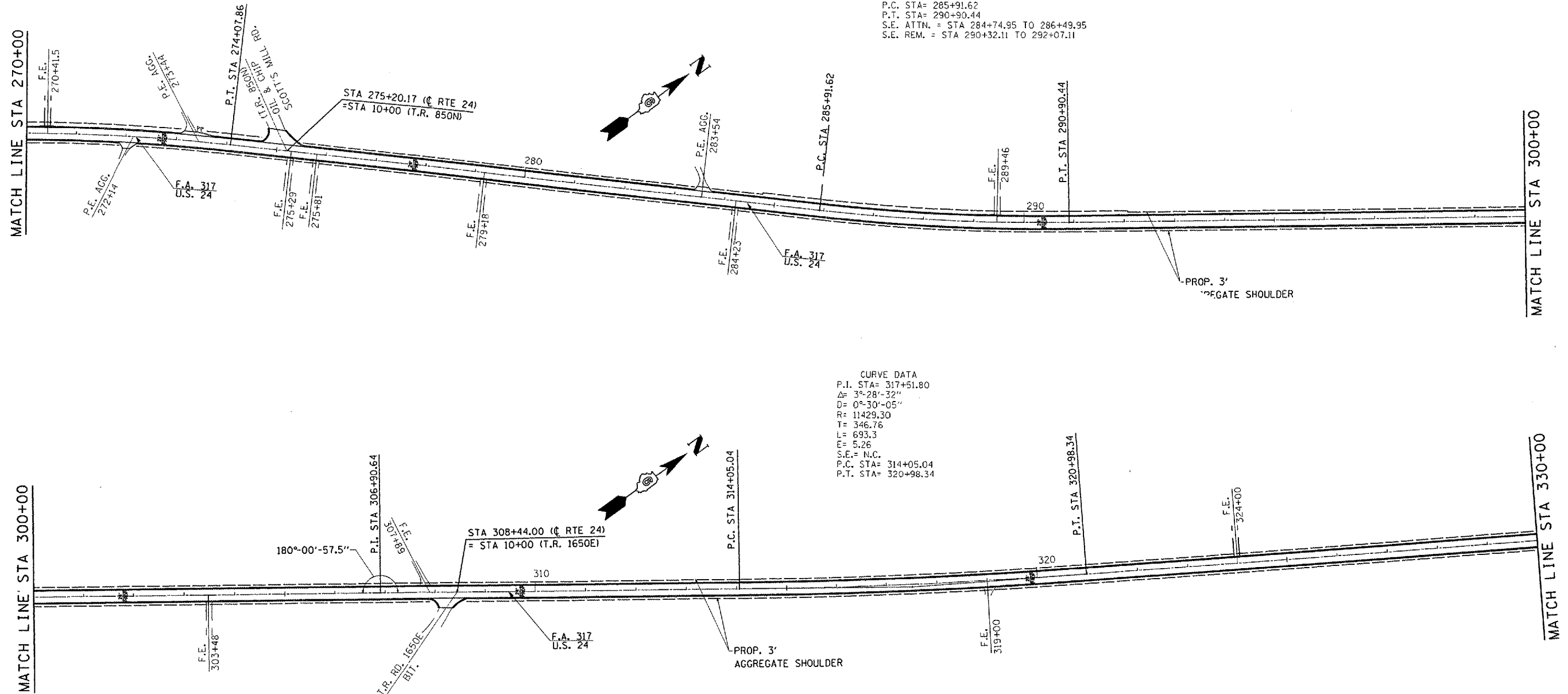


F.A.P. RTE.	SECTION	COUNTY	TOTAL SHEETS	SHEET NO.
317	(9,10,11) RS-3	SCHUYLER	23	18
STA. 270+00		TO STA. 330+00		
FED. ROAD DIST. NO.		ILLINOIS FED. AID PROJECT		
CONTRACT 72838				

CURVE DATA
P.I. STA= 288+41.34
 Δ = 7°-00'-26"
D= 1°-24'-17"
R= 4078.69
T= 249.72
L= 498.82
E= 7.64
S.E.= 0.03 //
P.C. STA= 285+91.62
P.T. STA= 290+90.44
S.E. ATTN. = STA 284+74.95 TO 286+49.95
S.E. REM. = STA 290+32.11 TO 292+07.11

CURVE DATA
P.I. STA= 317+51.80
 Δ = 3°-28'-32"
D= 0°-30'-05"
R= 11429.30
T= 346.76
L= 693.3
E= 5.26
S.E.= N.C.
P.C. STA= 314+05.04
P.T. STA= 320+98.34



NOTE:
END EDGELINE PAVEMENT MARKING THROUGH SIDE ROADS

REVISIONS	
NAME	DATE

ILLINOIS DEPARTMENT OF TRANSPORTATION
ALIGNMENT SCHEMATIC
F. A. P. ROUTE 317 (U. S. 24)
SECTION (9, 10, 11) RS-3
SCHUYLER COUNTY
SCALE: NOT TO SCALE
DATE: OCT, 2003
DRAWN BY: AGG
CHECKED BY: MJS