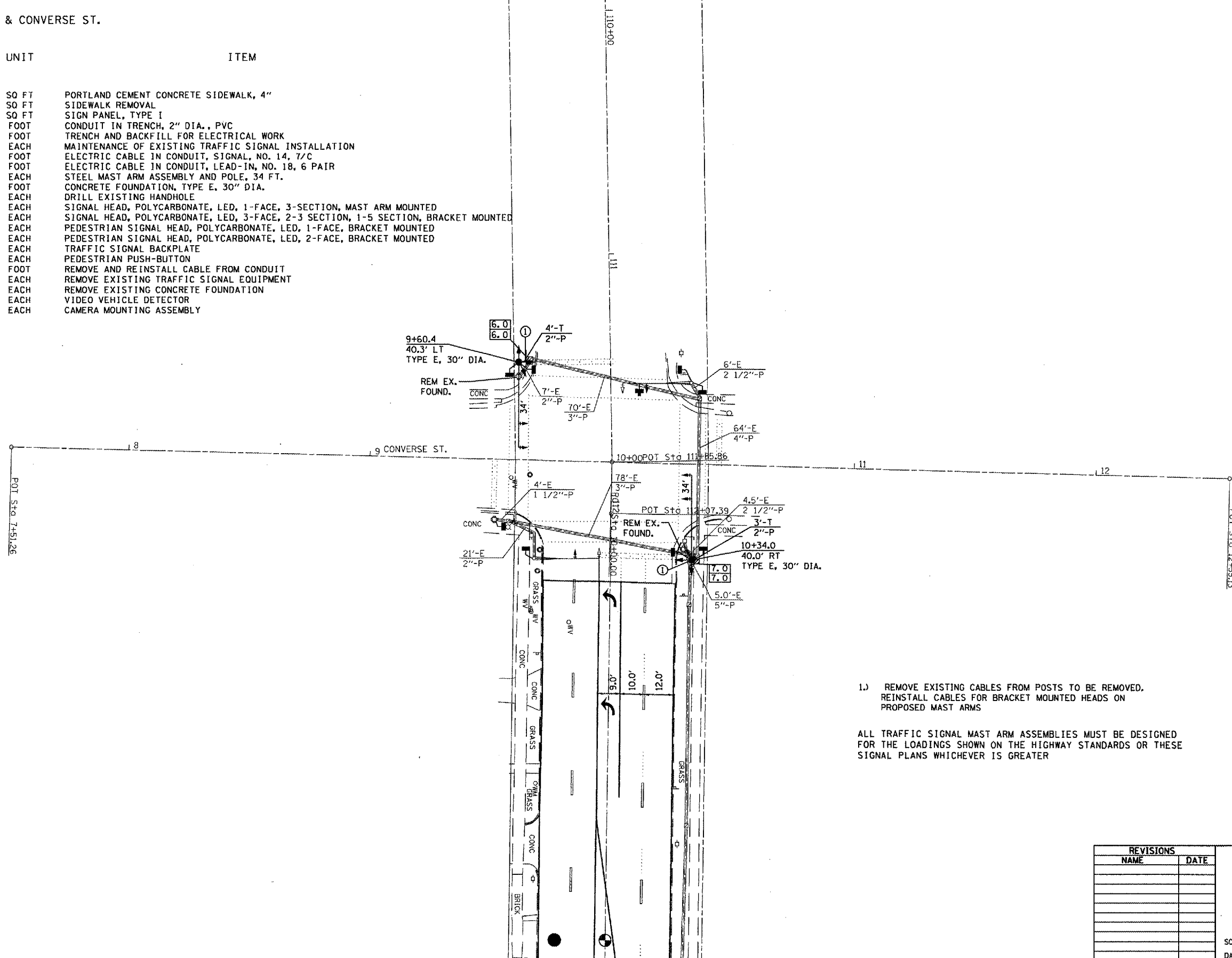


F.A.P. RTE.	SECTION	COUNTY	TOTAL SHEETS	SHEET NO.
666	SP-Z, RS-4	SANGAMON	80	60
STA.		TO STA.		
FED. ROAD DIST. NO.	ILLINOIS	FED. AID PROJECT		

TRAFFIC SIGNAL QUANTITIES

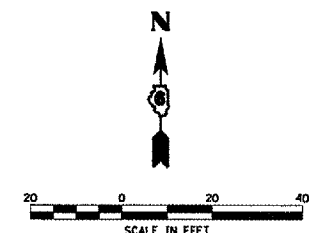
LOCATION: 9TH & CONVERSE ST.

QUANTITY	UNIT	ITEM
13.0	SO FT	PORTLAND CEMENT CONCRETE SIDEWALK, 4"
13.0	SO FT	SIDEWALK REMOVAL
18.0	SO FT	SIGN PANEL, TYPE I
7.0	FOOT	CONDUIT IN TRENCH, 2" DIA., PVC
7.0	FOOT	TRENCH AND BACKFILL FOR ELECTRICAL WORK
1	EACH	MAINTENANCE OF EXISTING TRAFFIC SIGNAL INSTALLATION
337.0	FOOT	ELECTRIC CABLE IN CONDUIT, SIGNAL, NO. 14, 7/C
134.0	FOOT	ELECTRIC CABLE IN CONDUIT, LEAD-IN, NO. 18, 6 PAIR
2	EACH	STEEL MAST ARM ASSEMBLY AND POLE, 34 FT.
27.0	FOOT	CONCRETE FOUNDATION, TYPE E, 30" DIA.
1	EACH	DRILL EXISTING HANDHOLE
6	EACH	SIGNAL HEAD, POLYCARBONATE, LED, 1-FACE, 3-SECTION, MAST ARM MOUNTED
2	EACH	SIGNAL HEAD, POLYCARBONATE, LED, 3-FACE, 2-3 SECTION, 1-5 SECTION, BRACKET MOUNTED
2	EACH	PEDESTRIAN SIGNAL HEAD, POLYCARBONATE, LED, 1-FACE, BRACKET MOUNTED
3	EACH	PEDESTRIAN SIGNAL HEAD, POLYCARBONATE, LED, 2-FACE, BRACKET MOUNTED
7	EACH	TRAFFIC SIGNAL BACKPLATE
8	EACH	PEDESTRIAN PUSH-BUTTON
34.5	FOOT	REMOVE AND REINSTALL CABLE FROM CONDUIT
1	EACH	REMOVE EXISTING TRAFFIC SIGNAL EQUIPMENT
2	EACH	REMOVE EXISTING CONCRETE FOUNDATION
1	EACH	VIDEO VEHICLE DETECTOR
1	EACH	CAMERA MOUNTING ASSEMBLY



1.) REMOVE EXISTING CABLES FROM POSTS TO BE REMOVED.
REINSTALL CABLES FOR BRACKET MOUNTED HEADS ON
PROPOSED MAST ARMS

ALL TRAFFIC SIGNAL MAST ARM ASSEMBLIES MUST BE DESIGNED
FOR THE LOADINGS SHOWN ON THE HIGHWAY STANDARDS OR THESE
SIGNAL PLANS WHICHEVER IS GREATER



REVISIONS	
NAME	DATE

ILLINOIS DEPARTMENT OF TRANSPORTATION

TRAFFIC SIGNAL PLAN
FAP ROUTE 666 (I-55 BUS/9TH STREET)
NINTH STREET AT CONVERSE STREET

SCALE: VERT. _____
HORIZ. _____

DATE _____ DRAWN BY _____
CHECKED BY _____

PLOT DATE * * * * *
FILE NAME * * * * *
PLOT SCALE * * * * *
USER NAME * * * * *