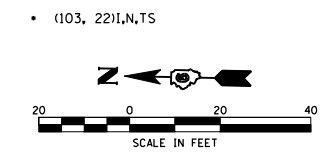


F.A.U. RTE.	SECTION	COUNTY	TOTAL SHEETS	SHEET NO.
7706		LOGAN	111	53
STA.		TO STA.		
FED. ROAD DIST. NO.	ILLINOIS	FED. AID PROJECT		

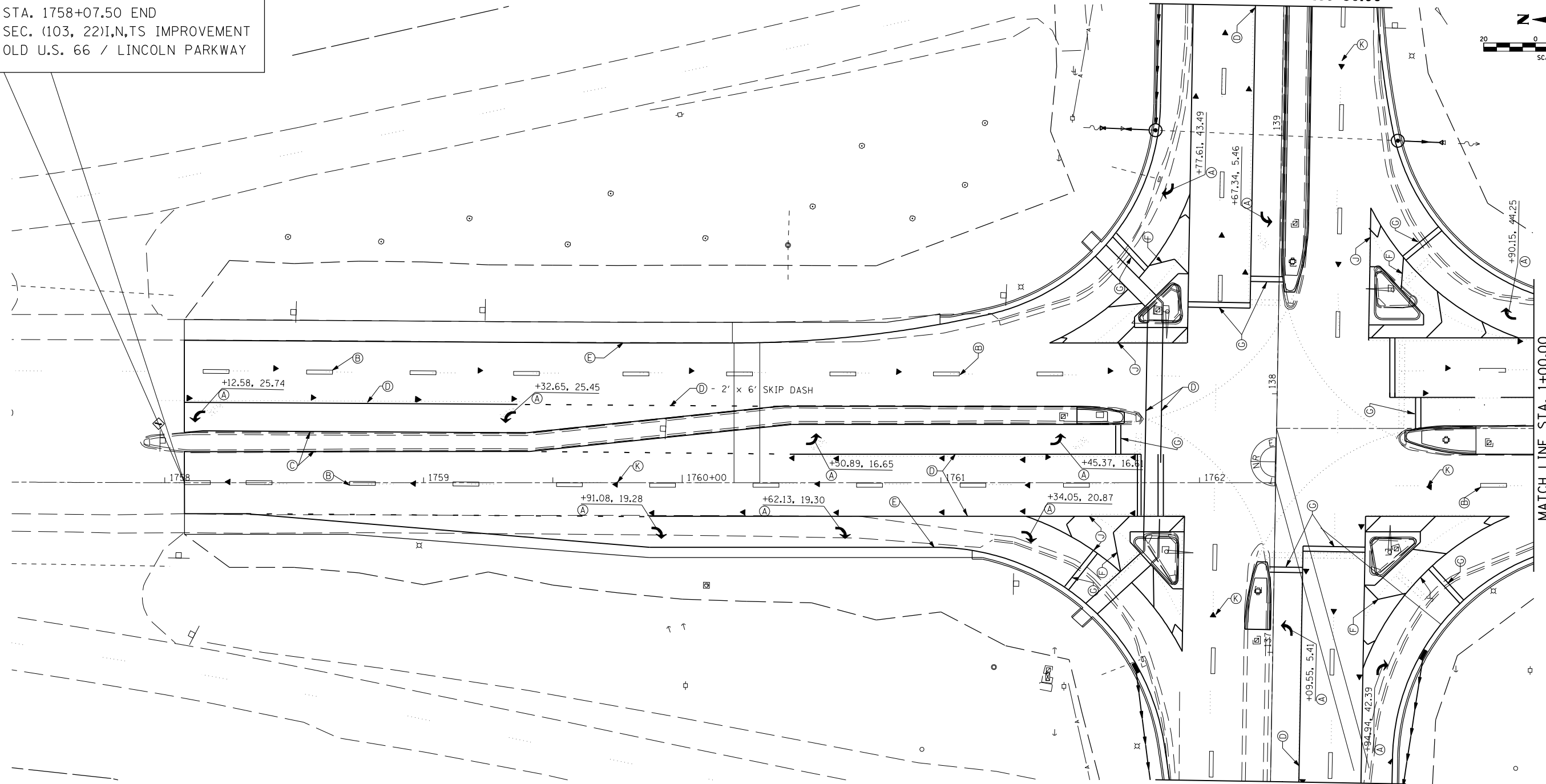


STA. 1758+07.50 END
SEC. (103, 22) I, N, T, S IMPROVEMENT
OLD U.S. 66 / LINCOLN PARKWAY

MATCH LINE STA. 139+50.00

MATCH LINE STA. 1+00.00

MATCH LINE STA. 136+50.00



STRIPING LEGEND

- (A) PREFORMED PLASTIC PAVEMENT MARKING, TY. B, LETTERS & SYMBOLS - (WHITE)
- (B) PREFORMED PLASTIC PAVEMENT MARKING, TY. B, 5" LINE SKIP DASH - (WHITE)
- (C) THERMOPLASTIC PAVEMENT MARKING, 5" LINE - (YELLOW)
- (D) PREFORMED PLASTIC PAVEMENT MARKING, TY. B, 6" LINE - (WHITE)
- (E) THERMOPLASTIC PAVEMENT MARKING, 5" LINE SOLID - (WHITE)
- (F) THERMOPLASTIC PAVEMENT MARKING, 12" LINE @ 20' CENTER TO CENTER - (WHITE)
- (G) PREFORMED PLASTIC PAVEMENT MARKING, TY. B, 24" LINE - (WHITE)
- (H) THERMOPLASTIC PAVEMENT MARKING, 5" DOUBLE LINE SOLID - (YELLOW)
- (I) THERMOPLASTIC PAVEMENT MARKING, 12" LINE @ 20" CENTER TO CENTER - (YELLOW)
- (J) THERMOPLASTIC PAVEMENT MARKING, 8" LINE - (WHITE)
- (K) RAISED REFLECTIVE PAVEMENT MARKER

STA. 137+86.63 (IL 10/121/WOODLAWN AVENUE) =
STA. 0+00.56 (OLD US 66/LINCOLN PARKWAY)

STA. 137+65.64 (IL 10/121/WOODLAWN AVE. =
STA. 1762+29.39 (OLD U.S. 66/LINCOLN PKWY)

REVISIONS	
NAME	DATE
TMJ	03-20-06

ILLINOIS DEPARTMENT OF TRANSPORTATION
PAVEMENT MARKING DETAILS

F.A.U. 7706 (LINCOLN PKWY)
SECTION (103, 22) I, N, T, S
LOGAN COUNTY
LINCOLN, IL.

SCALE: VERT. DRAWN BY TMJ
 HORIZ. CHECKED BY VTY
DATE: 03-16-05

PLOT DATE = 3/20/2007
FILE NAME = c:\projects\65338A\shiplan\plan1466.dgn
PLOT SCALE = 42,352% / IN.
USER NAME = laughlin-1