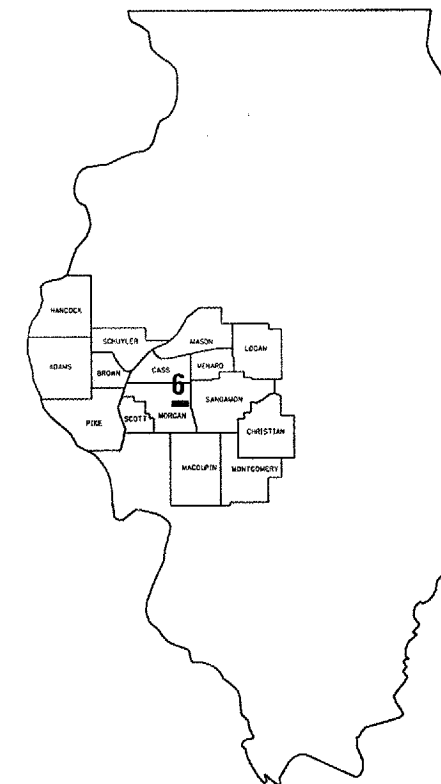


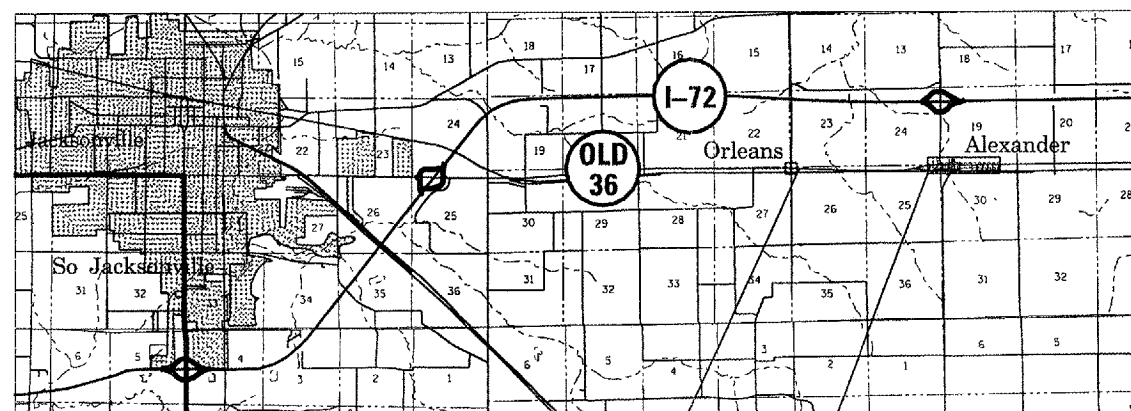
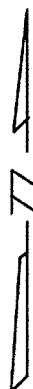
FOR INDEX OF SHEETS AND HIGHWAY
STANDARDS, SEE SHEET 2.

STATE OF ILLINOIS
DEPARTMENT OF TRANSPORTATION
DIVISION OF HIGHWAYS

**PROPOSED
HIGHWAY PLANS
FAS ROUTE 1613 (OLD US 36)
SECTION (24,25)RS-8
MORGAN COUNTY
C96-563-07 / D96-544-07**



LOCATION OF SECTION INDICATED THUS: ■



END PROJECT
STA 1206+90

BEGIN PROJECT
STA 1111+50

J. U. L. I. E.
JOINT UTILITY LOCATION INFORMATION FOR EXCAVATION
1-800-892-0123

PLANS & CONTRACT TECHNICIAN: TIMOTHY SHARP
PHONE: (217) 782-7743

NET LENGTH OF SEC 9540 FT=1.81 MILE

STATE OF ILLINOIS
DEPARTMENT OF TRANSPORTATION
DIVISION OF HIGHWAYS

SUBMITTED Mar 16 2007

Cliff M. Reedman
DEPUTY DIRECTOR OF HIGHWAYS, REGION FOUR ENGINEER

May 11, 2007
Eric E. Hamm
ENGINEER OF DESIGN AND ENVIRONMENT

May 11, 2007
Milton R. Sees, P.E.
DIRECTOR, DIVISION OF HIGHWAYS

CONTRACT NO. 72B15

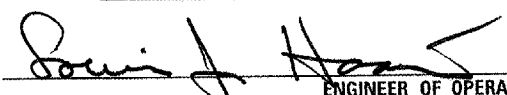

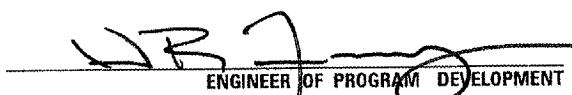
INDEX OF SHEETS

- 1 COVER SHEET
- 2 INDEX, STANDARDS, & GENERAL NOTES
- 3 SUMMARY OF QUANTITIES
- 4 QUANTITY SCHEDULES
- 5 TYPICAL CROSS SECTIONS
- 6 PAVING DETAILS

STANDARDS

- 701001-01
- 701006-01
- 701201-02
- 701306-01
- 702001-06
- 780001-01
- 781001-02

GENERAL NOTES

STATE OF ILLINOIS DEPARTMENT OF TRANSPORTATION DIVISION OF HIGHWAYS DISTRICT 6	
EXAMINED	March 6 20 07
 ENGINEER OF OPERATIONS	
EXAMINED	Mar 8 20 07
 ENGINEER OF PROGRAM IMPLEMENTATION	
EXAMINED	Mar 15 20 07
 ENGINEER OF PROGRAM DEVELOPMENT	

MIX DESIGNS

MIX	HMA SURF. CSE. MIX "C" N50	HMA SHOULDERS
AC/PG	PG 64-22	PG 58-22
DESIGN AIR VOIDS	4.0% @ N DESIGN = 50	2.0% @ N DESIGN = 30
MIXTURE COMPOSITION (GRADATION MIXTURE)	IL 9.5 OR 12.5	BAM
FRICTION AGGREGATE	MIX "C"	N/A

INDEX & GENERAL NOTES
FAS 1613 (OLD US 36)
SECTION (24,25)RS-8
MORGAN COUNTY

S U M M A R Y O F Q U A N T I T I E S

CODE NO.	ITEM	UNIT	100% STATE
			1000
			TOTAL QTY
40600200	BITUMINOUS MATERIALS (PRIME COAT)	TON	9
40600300	AGGREGATE (PRIME COAT)	TON	48
40600990	TEMPORARY RAMP	SQ YD	8
40603310	HOT-MIX ASPHALT SURFACE COURSE, MIX "C", N50	TON	1960
44000157	HOT-MIX ASPHALT SURFACE REMOVAL, 2"	SQ YD	333
44000198	HOT-MIX ASPHALT SURFACE REMOVAL, VARIABLE DEPTH	SQ YD	23322
48101200	AGGREGATE SHOULDERS, TYPE B	TON	610
48203100	HOT-MIX ASPHALT SHOULDERS	TON	38
67100100	MOBILIZATION	L SUM	1
70100450	TRAFFIC CONTROL AND PROTECTION, STANDARD 701201	L SUM	1
70100460	TRAFFIC CONTROL AND PROTECTION, STANDARD 701306	L SUM	1
70300100	SHORT-TERM PAVEMENT MARKING	FOOT	1735
70301000	WORK ZONE PAVEMENT MARKING REMOVAL	SQ FT	723
* 78001120	PAINT PAVEMENT MARKING - LINE 5"	FOOT	23672
* 78100100	RAISED REFLECTIVE PAVEMENT MARKER	EACH	120
78300200	RAISED REFLECTIVE PAVEMENT MARKER REMOVAL	EACH	120

* SPECIALTY ITEMS

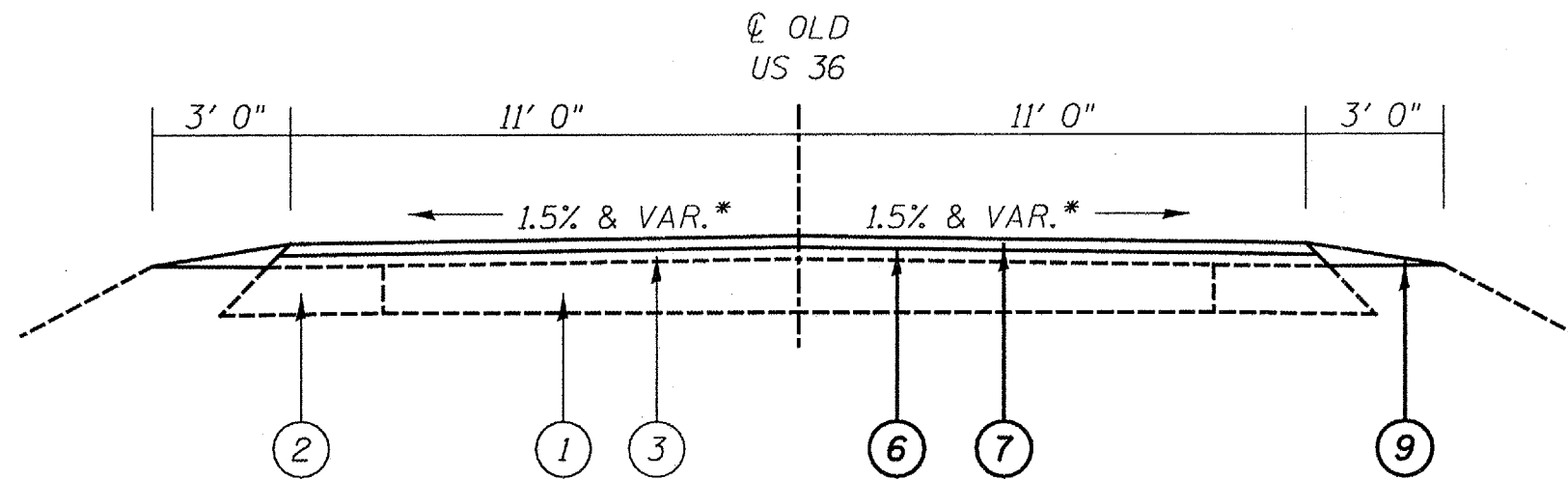
QUANTITIES
FAS 1613 (OLD US 36)
SECTION (24,25)RS-8
MORGAN COUNTY

AGGREGATE SHOULDRS	
STA TO STA	TONS
1111+50 RT TO 1176+60 RT	216.6
1180+24 RT TO 1206+90 RT	88.7
1111+50 LT TO 1177+47 LT	219.5
1181+32 LT TO 1206+90 LT	85.2
TOTAL	610.0

HMA SHOULDERS	
STA TO STA	TONS
1176+60 RT TO 1180+24 RT	18.5
1177+47 LT TO 1181+32 LT	19.5
TOTAL	38.0

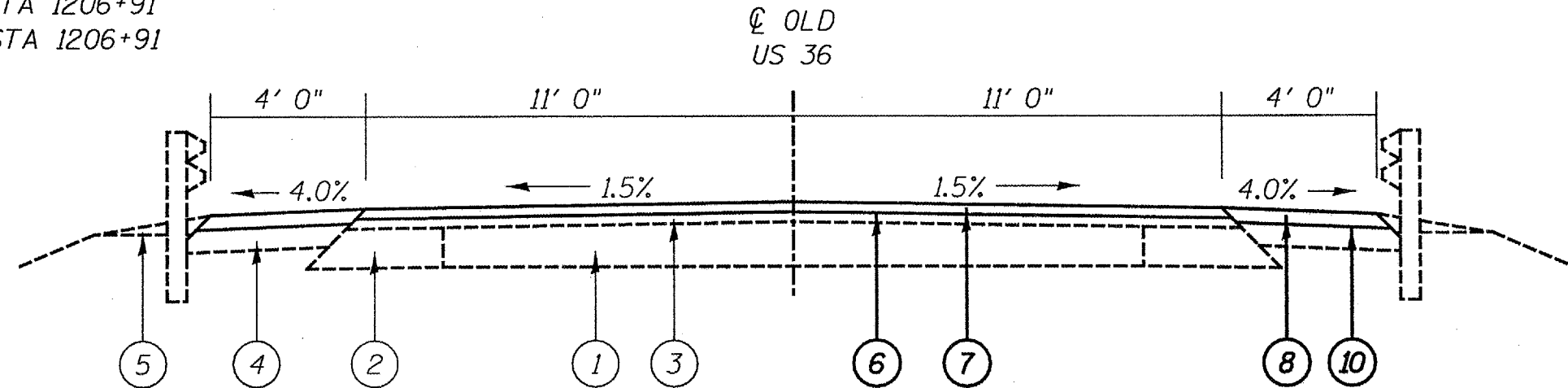
PAINT PAVEMENT MARKING, LINE 5"				
STA TO STA	LENGTH	☒ TYPE	☒ QTY.	EDGE QTY.
1111+50 TO 1180+22	6872'	SKIP DASH	1718'	13744'
1180+22 TO 1185+66	544'	NO PASS, RT	680'	1088'
1185+66 TO 1192+06	640'	DOUBLE YELLOW	1280'	1280'
1192+06 TO 1194+20	214'	NO PASS, RT	268'	428'
1194+20 TO 1203+65	945'	SKIP DASH	236'	1890'
1203+65 TO 1206+91	326'	NO PASS, RT	408'	652'
TOTALS			4590'	19082'
GRAND TOTAL			23672'	

QUANTITY SCHEDULES
FAS 1613 (OLD US 36)
SECTION (24,25)RS-8
MORGAN COUNTY



* THE SLOPE SHALL BE MILLED AT 1.5% EXCEPT IN SUPERELEVATED AREAS WHERE THE MILLIED SLOPE SHALL MATCH THE EXISTING SLOPE

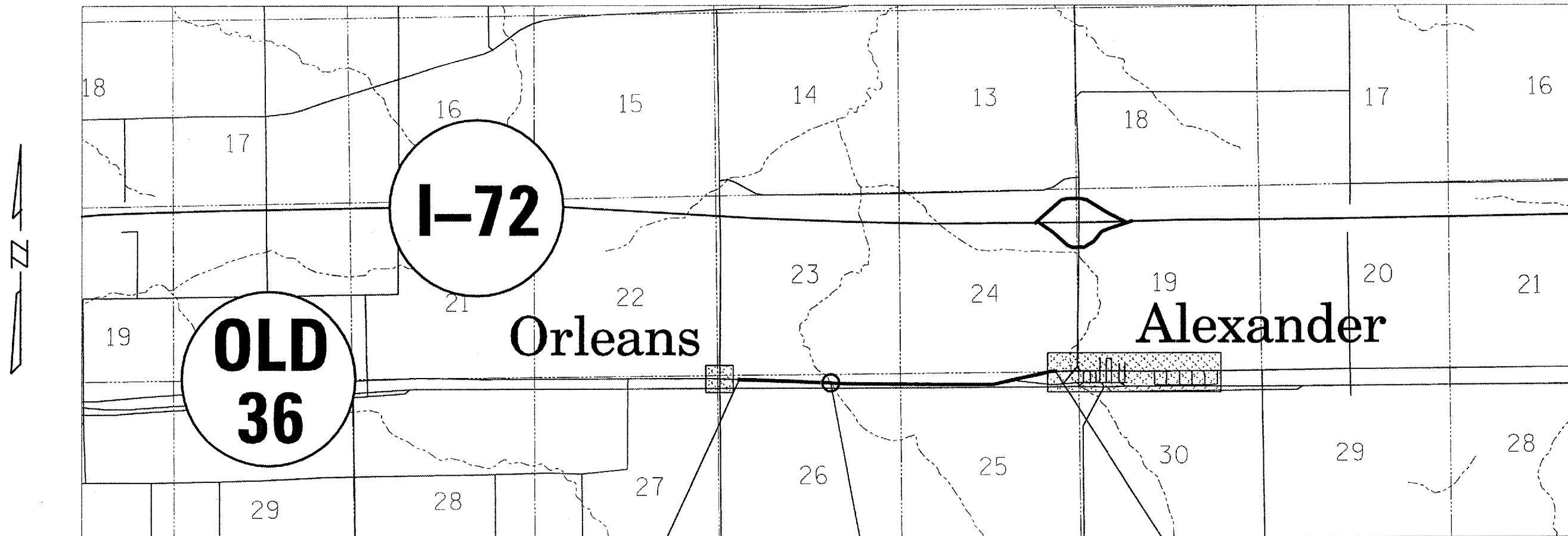
STA 1111+50 TO LT STA 1177+47
STA 1111+50 TO RT STA 1176+60
LT STA 1181+32 TO STA 1206+91
RT STA 1180+24 TO STA 1206+91



LT STA 1177+47 TO LT STA 1181+32
RT STA 1176+60 TO RT STA 1180+24

- ① EXISTING PCC PAVEMENT
- ② EXISTING BITUMINOUS WIDENING
- ③ EXISTING BITUMINOUS OVERLAY(S) (VAR.)
- ④ EXISTING BITUMINOUS SHOULDER (8")
- ⑤ EXISTING AGGREGATE SHOULDER
- ⑥ PROPOSED HMA SURFACE REMOVAL (VARIABLE DEPTH)
- ⑦ PROPOSED HMA SURFACE (1-1/2")
- ⑧ PROPOSED HMA SHOULDERS
- ⑨ PROPOSED AGGREGATE SHOULDER
- ⑩ PROPOSED HMA SURFACE REMOVAL (2")

TYPICAL SECTIONS
FAS 1613 (OLD US 36)
SECTION (24,25)RS-8
MORGAN COUNTY



END PROJECT AT EXISTING
BUTT JOINT JUST EAST OF
ORLEANS +/- STA 1206+90

SETTLED BOX CULVERT
+/- STA 1178+91

BEGIN PROJECT AT EXISTING
BUTT JOINT JUST WEST OF
OLD 36 / IL 123 INTERSECTION
+/- STA 1111+50

NOTES:

THE BUTT JOINTS SHALL BE LOCATED AND MARKED BY THE ENGINEER PRIOR TO THE START OF WORK BY THE CONTRACTOR.

THE EXISTING ROAD SURFACE SHALL BE MILLED 1-1/2" AT CENTELINE AND BE CARRIED OUT TO THE EDGE OF PAVEMENT AT THE CORRECT SLOPE AS DETAILED IN THE TYPICAL SECTIONS. SPECIAL CARE SHALL BE TAKEN WHEN MILLING OVER THE BOX CULVERT AT STA 1178+91 IN ORDER TO CORRECT THE EXISTING DIP IN THE PAVEMENT THERE. THE METHOD USED FOR GRADE CONTROL SHALL BE AT THE DISCRETION OF THE ENGINEER.

PAVING DETAIL
FAS 1613 (OLD US 36)
SECTION (24,25)RS-8
MORGAN COUNTY