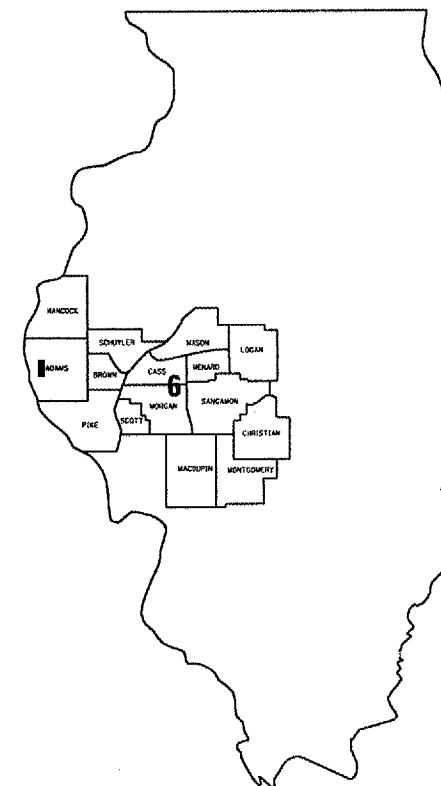
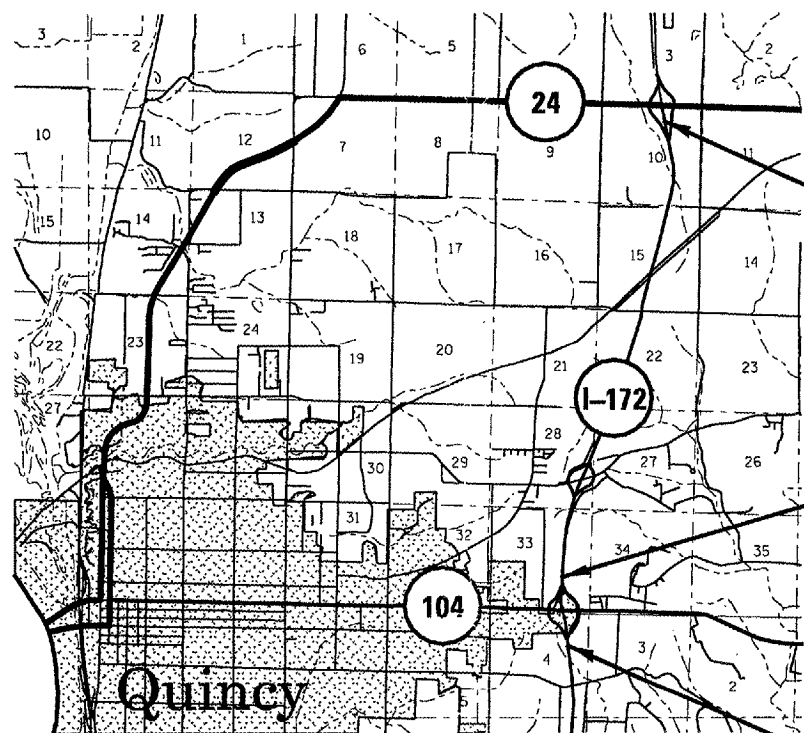


FOR INDEX OF SHEETS AND HIGHWAY
STANDARDS, SEE SHEET 2.

STATE OF ILLINOIS
DEPARTMENT OF TRANSPORTATION
DIVISION OF HIGHWAYS
**PLANS FOR PROPOSED
CONTRACT MAINTENANCE**
FAI ROUTE 172 (I-172)
SECTION 1-5(I); 1-6(I-2)
ADAMS COUNTY
C96-009-08 / D96-021-07



LOCATION OF SECTION INDICATED THUS: ■



END PROJECT
STA 241+90

STA EQ
STA 288+81.55 BK
= STA 0+00 AH

BEGIN PROJECT
STA 224+78

NET LENGTH OF SEC 30,594 FT = 5.8 MILE

J. U. L. I. E.
JOINT UTILITY LOCATION INFORMATION FOR EXCAVATION
1-800-892-0123

PLANS & CONTRACT TECHNICIAN: TIMOTHY SHARP
PHONE: (217) 782-7743

CONTRACT NO. 72B22

STATE OF ILLINOIS
DEPARTMENT OF TRANSPORTATION
DIVISION OF HIGHWAYS

SUBMITTED MARCH 29 20 07

Christ N. Reed
DEPUTY DIRECTOR OF HIGHWAYS, REGION FOUR ENGINEER

May 11 20 07

Eric E. Harm
ENGINEER OF DESIGN AND ENVIRONMENT

May 11 20 07

Milton R. Seas, P.E.
DIRECTOR, DIVISION OF HIGHWAYS


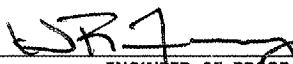
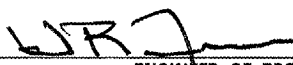
INDEX OF SHEETS

- 1 COVER SHEET
- 2 INDEX, STANDARDS, GENERAL NOTES
- 3 SUMMARY OF QUANTITIES
- 4 TYPICAL SECTIONS
- 5 PATCHING SCHEDULES
- 6 LONGITUDINAL JOINT REPAIR DETAIL

STANDARDS

- 442001-03
- 701101-01
- 701106-01
- 701400-02
- 701401-03
- 701406-04
- 701411-03
- 702001-06
- 781001-02

GENERAL NOTES:

STATE OF ILLINOIS DEPARTMENT OF TRANSPORTATION DIVISION OF HIGHWAYS DISTRICT 6	
EXAMINED	March 28 20 07
	 ENGINEER OF OPERATIONS
EXAMINED	Mar 26 2007
	 ENGINEER OF PROGRAM IMPLEMENTATION
EXAMINED	Mar 28 2007
	 ENGINEER OF PROGRAM DEVELOPMENT

MIX DESIGN:

MIX	PG	DESIGN AIR VOIDS	MIX COMPOSITION (GRADATION MIXTURE)	FRICTION AGGREGATE
HMA BINDER CSE, IL 19.0, N90	PG 64-22	4.0% @ N DESIGN = 90	IL 19.0	N/A

INDEX, STDS, & GEN. NOTES
FAI 172 (I-172)
SECTION 1-5(I); 1-6(I-2)
ADAMS COUNTY

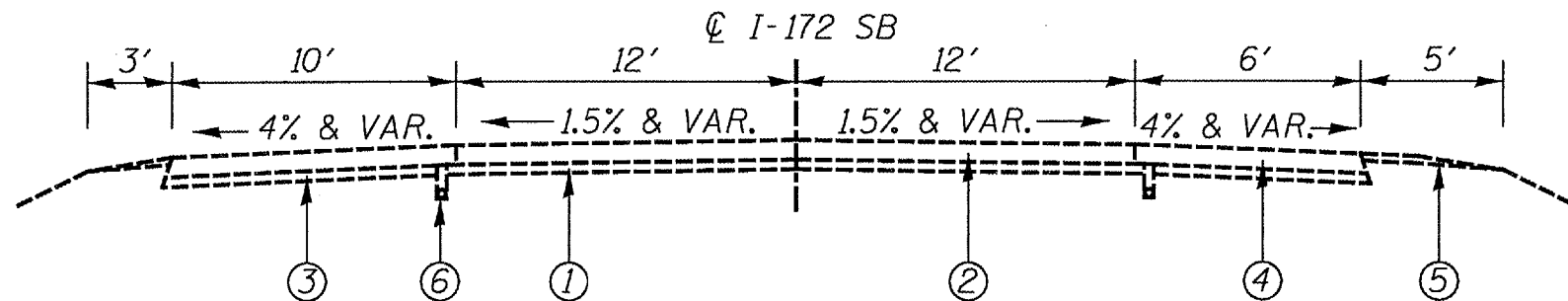
S U M M A R Y O F Q U A N T I T I E S

CODE NO.	ITEM	UNIT	100% STATE
			J000
			TOTAL QTY
44200529	CLASS A PATCHES, TYPE II, 8 INCH	SQ YD	133
44200533	CLASS A PATCHES, TYPE III, 8 INCH	SQ YD	191
44200535	CLASS A PATCHES, TYPE IV, 8 INCH	SQ YD	365
44213000	PATCHING REINFORCEMENT	SQ YD	689
44213200	SAW CUTS	FOOT	2330
67100100	MOBILIZATION	L SUM	1
70100700	TRAFFIC CONTROL AND PROTECTION, STANDARD 701406	L SUM	1
70100800	TRAFFIC CONTROL AND PROTECTION, STANDARD 701401	L SUM	1
70103815	TRAFFIC CONTROL SURVEILLANCE	CAL DA	10
70300100	SHORT-TERM PAVEMENT MARKING	FOOT	531
70301000	WORK ZONE PAVEMENT MARKING REMOVAL	SQ FT	221
* 78008220	POLYUREA PAVEMENT MARKING TYPE I, LINE 5"	FOOT	1460
* 78100100	RAISED REFLECTIVE PAVEMENT MARKER	EACH	75
78300200	RAISED REFLECTIVE PAVEMENT MARKER REMOVAL	EACH	75
X7011420	TRAFFIC CONTROL AND PROTECTION, STANDARD 701411	L SUM	1
Z0033600	LONGITUDINAL JOINT REPAIR	FOOT	9625
Z0075300	TIE BARS	EACH	120

*SPECIALTY ITEMS

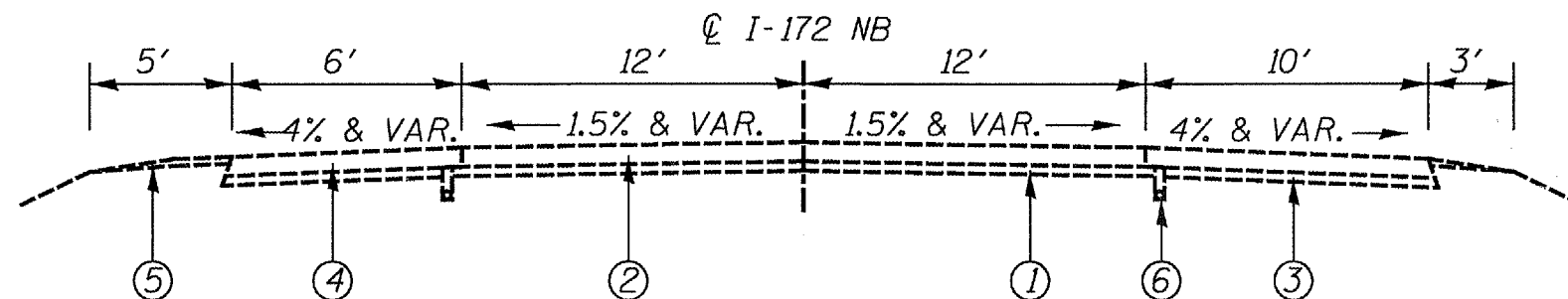
Rev,

QUANTITIES
FAI 172 (I-172)
SECTION 1-5(I); 1-6(I-2)
ADAMS COUNTY



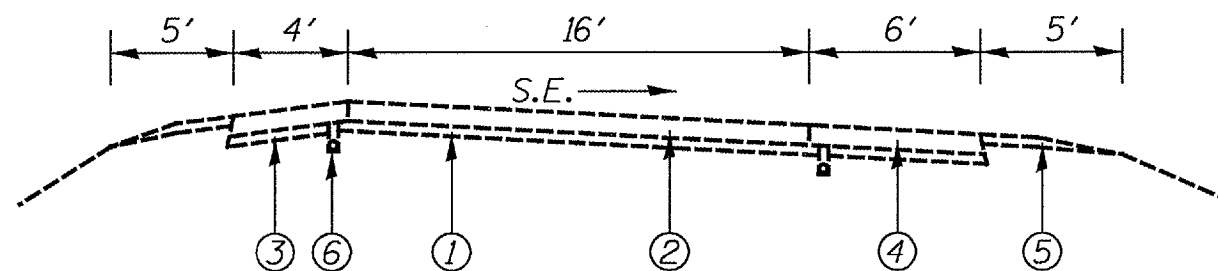
SB TYPICAL SECTION (TANGENT)

224+78 TO 288+81.55
STA EQ 288+81.55 BK = 0+00 AH
0+00 TO 241+90



NB TYPICAL SECTION (TANGENT)

224+78 TO 288+81.55
STA EQ 288+81.55 BK = 0+00 AH
0+00 TO 241+90



TYPICAL RAMP SECTION

ALL LOCATIONS

- ① EXISTING STABILIZED SUB-BASE, 4"
- ② EXISTING CONTINUOUSLY REINFORCED CONCRETE PAVEMENT, 8"
- ③ EXISTING SUB-BASE GRANULAR MATERIAL, TYPE C, 4"
- ④ EXISTING HOT-MIX ASPHALT SHOULDER, 8"
- ⑤ EXISTING AGGREGATE SHOULDER
- ⑥ EXISTING PIPE UNDERDRAINS

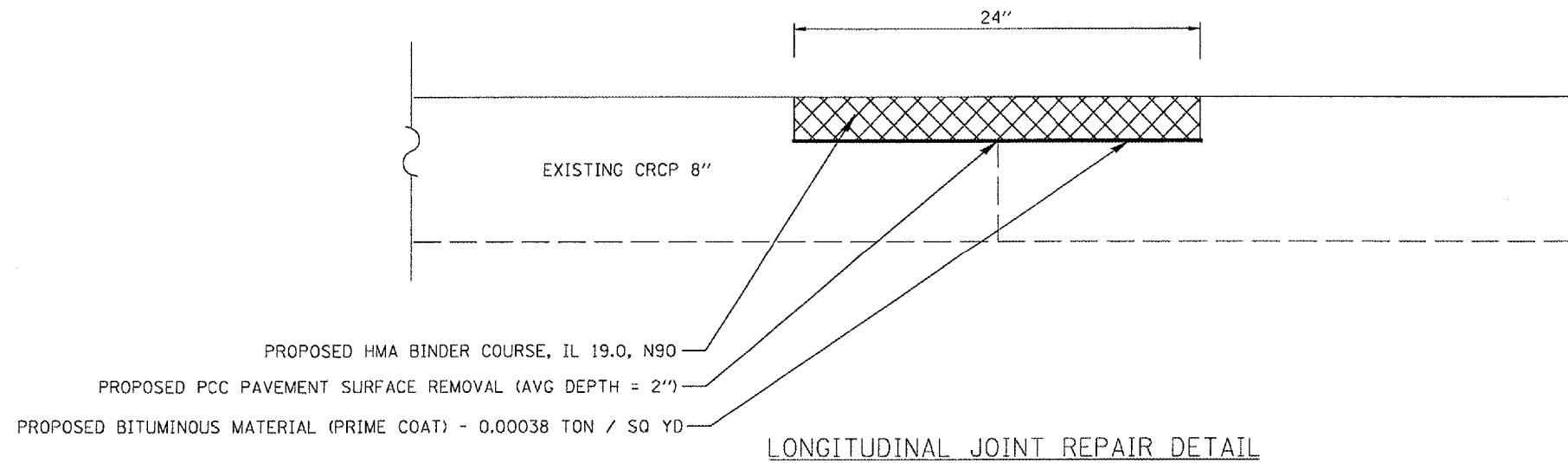
NOT TO SCALE

TYPICAL SECTIONS
FAI 172 (I-172)
SECTION 1-5(I); 1-6(I-2)
ADAMS COUNTY

LONGITUDINAL JOINT REPAIR SCHEDULE			
LOCATION	BEGIN STA	END STA	LOGITUDINAL JOINT REPAIR (FT)
SB RAMP ONTO COLUMBUS RD.	1+80	3+05	125
SB RAMP ONTO COLUMBUS RD.	22+27	22+81	54
I-172 NB CL	225+46	227+00	154
I-172 NB CL	227+90	230+80	290
I-172 NB CL	242+35	242+90	55
I-172 NB CL/DL	259+63	265+47	584
I-172 NB PL	261+28	261+61	33
I-172 NB CL	29+42	35+23	581
I-172 NB PL	52+07	52+40	33
I-172 NB DL	86+10	86+44	34
I-172 NB PL	105+25	106+00	75
I-172 NB DL	107+01	107+77	76
I-172 NB DL	108+62	108+84	22
I-172 NB CL	111+50	113+26	176
I-172 NB PL	113+77	114+55	78
I-172 NB CL	122+00	123+75	175
I-172 NB CL/DL	146+87	149+90	303
I-172 NB PL	221+27	221+65	38
I-172 SB PL	240+57	241+90	133
I-172 SB CL	213+20	213+42	22
I-172 SB CL	207+64	207+95	31
I-172 SB CL	205+13	207+09	196
I-172 SB DL	194+08	194+81	73
I-172 SB DL	169+14	169+71	57
I-172 SB PL	163+50	167+05	355
I-172 SB DL	163+68	163+92	24
I-172 SB CL	143+59	144+44	85
I-172 SB CL	127+81	129+09	128
I-172 SB DL	118+60	120+10	150
I-172 SB DL	117+60	118+12	52
I-172 SB CL	100+30	111+03	1073
I-172 SB CL	97+05	97+81	76
I-172 SB CL	90+27	90+57	30
I-172 SB DL	77+47	88+57	1110
I-172 SB CL	67+53	68+34	81
I-172 SB PL	47+50	48+51	101
I-172 SB CL/DL	45+20	47+92	272
I-172 SB CL	34+60	35+76	116
I-172 SB CL/DL/PL	28+33	32+54	421
I-172 SB CL	14+28	26+28	1200
I-172 SB CL	8+88	11+00	212
I-172 SB CL	7+38	8+00	62
I-172 SB CL	5+00	5+40	40
I-172 SB CL/DL	2+40	288+78	244
I-172 SB DL	259+50	262+21	271
I-172 SB PL	235+92	237+16	124
TOTAL:			9625

PATCHING SCHEDULE									
LOCATION	APPROX. STA	LENGTH (FT)	WIDTH (FT)	PATCHING REINFORCEMENT (SQ YD)	CL. A PATCHES TYPE II, 8" (SQ YD)	CL. A PATCHES TYPE III, 8" (SQ YD)	CL. A PATCHES TYPE IV, 8" (SQ YD)	TIE BARS (EACH)	SAW CUTS (FT)
NBDL	224+78	6	12	8.00	8.00				60
NBDL	256+80	5	12	6.67	6.67				58
NBDL	265+25	15	12	20.00		20.00			78
NBPL	265+25	15	12	20.00		20.00			78
NBDL	284+22	13	12	17.33		17.33			74
NBDL	55+65	15	12	20.00		20.00			78
NBDL	67+20	15	12	20.00		20.00			78
NBDL	91+75	20	12	26.67			26.67	10	88
NBDL	116+25	17	12	22.67		22.67			82
NBPL	116+25	17	12	22.67		22.67			82
NBDL	125+15	8	12	10.67	10.67				64
NBPL	125+15	8	12	10.67	10.67				64
NBDL	139+30	10	12	13.33	13.33				68
NBPL	139+30	10	12	13.33	13.33				68
NBDL	166+70	5	12	6.67	6.67				58
NBPL	226+25	100	12	133.33			133.33	50	248
SBDL	238+15	18	12	24.00		24.00			84
SBPL	238+15	18	12	24.00		24.00			84
SBDL	240+20	8	14	12.44	12.44				72
SBDL	241+50	6	12	8.00	8.00				60
SBDL	139+00	20	12	26.67			26.67	10	88
SBDL	143+85	5	12	6.67	6.67				58
SBDL	166+10	5	12	6.67	6.67				58
SBPL	166+10	5	12	6.67	6.67				58
SBPL	170+30	5	12	6.67	6.67				58
SBDL	177+62	6	12	8.00	8.00				60
SBPL	177+62	6	12	8.00	8.00				60
NB RAMP ONTO US 24	3+00	100	16	177.78			177.78	50	264
TOTALS:				687.56	132.44	190.67	364.44	120	2330

PATCHING SCHEDULES
FAI 172 (I-172)
SECTION 1-5(I); 1-6(I-2)
ADAMS COUNTY

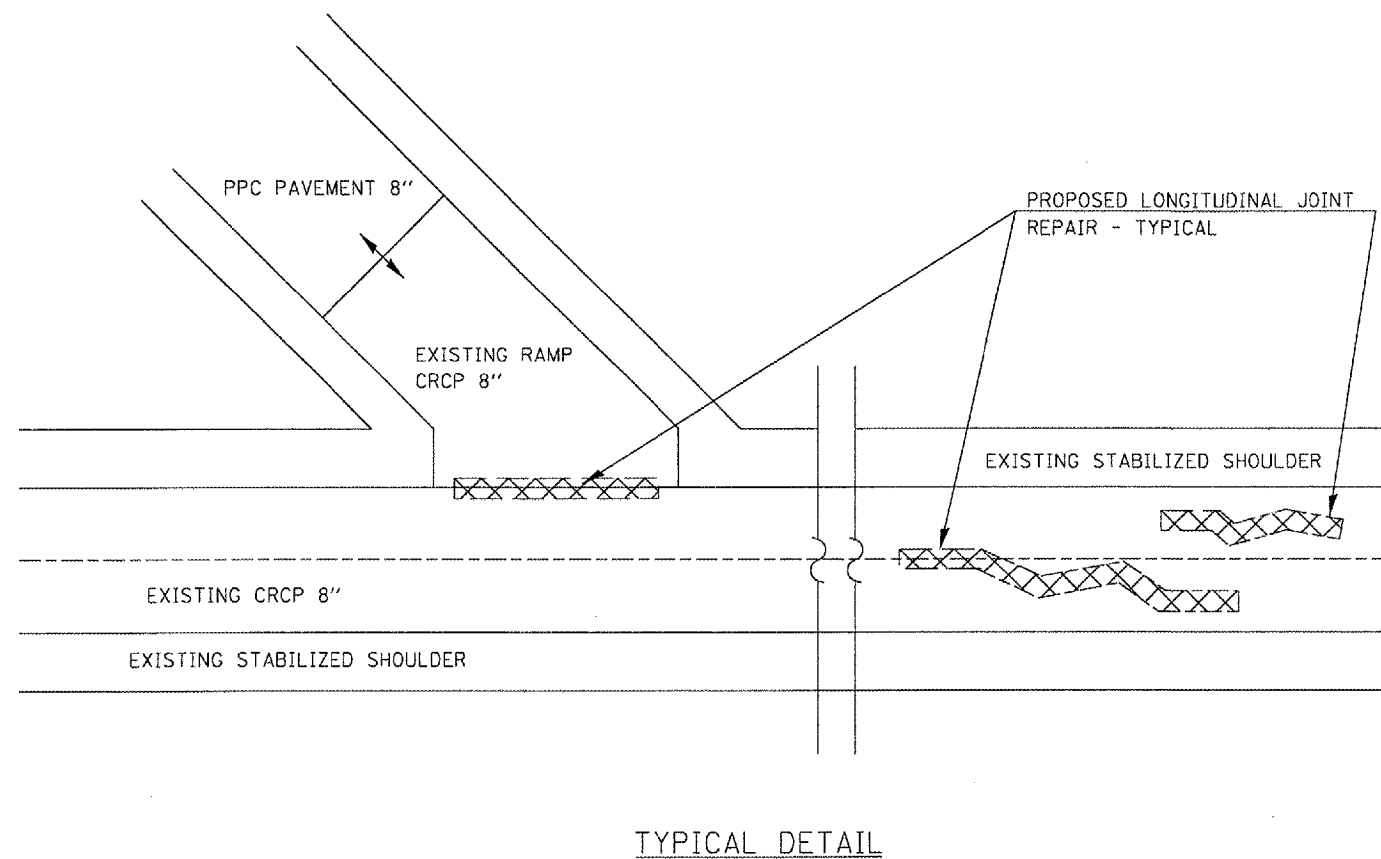


NOTES:

THE CONTRACTOR'S BID PRICE FOR LONGITUDINAL JOINT REPAIR SHALL INCLUDE ALL MATERIAL AND LABOR COSTS FOR THE MILLING, BITUMINOUS MATERIALS (PRIME COAT), AND HMA SURFACE INVOLVED IN THE LONGITUDINAL JOINT REPAIR.

THE ENGINEER IN THE FIELD SHALL DETERMINE AND LOCATE ALL AREAS FOR REPAIR.

ANY REINFORCEMENT BARS THAT ARE EXPOSED DURING MILLING SHALL BE CUT OFF AS SHORT AS POSSIBLE. THE COST OF CUTTING EXPOSED BARS SHALL BE INCLUDED IN THE BID PRICE FOR LONGITUDINAL JOINT REPAIR.



LONG. JT. REPAIR DETAIL
FAI 172 (I-172)
SECTION 1-5(I); 1-6(I-2)
ADAMS COUNTY