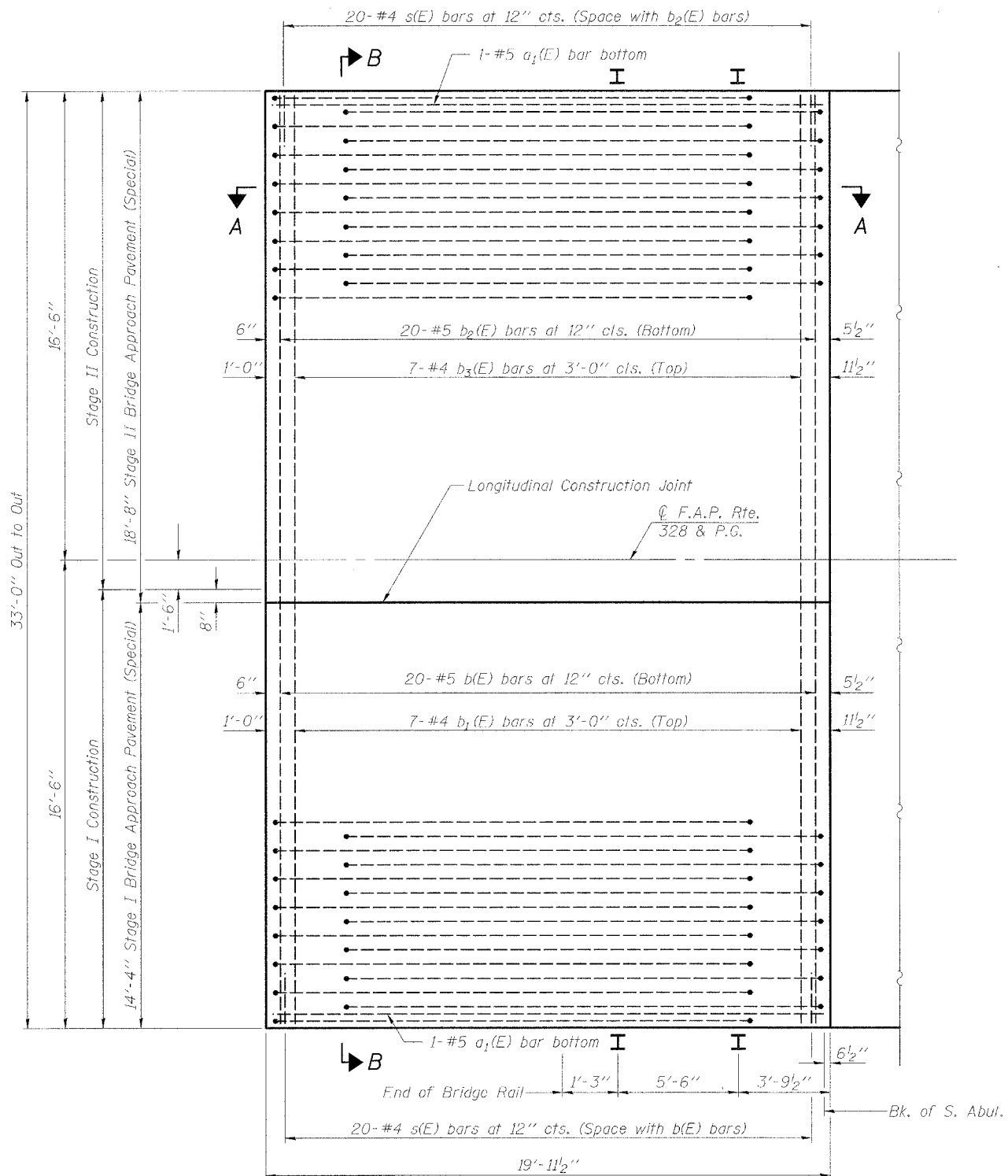


Contract #74003



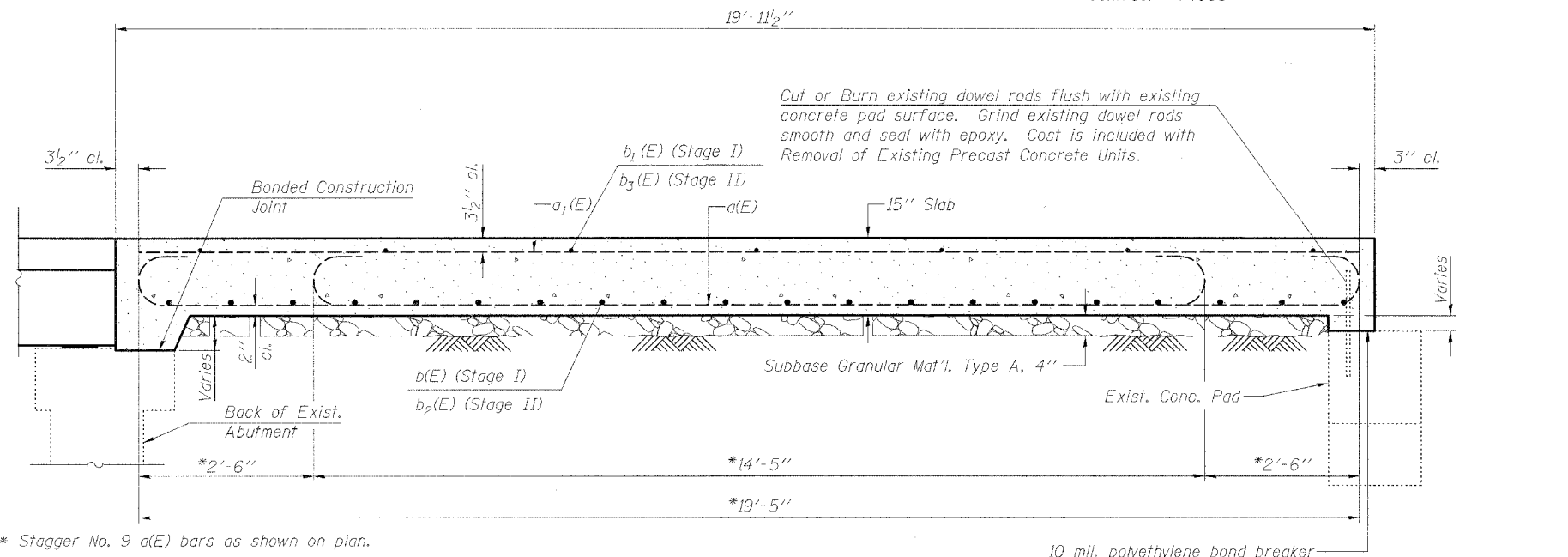
PLAN

(Approach Beam at N. Abut. is mirror image of S. Abut.)

DESIGNED	JJD
CHECKED	EML
DRAWN	JJD
CHECKED	EML

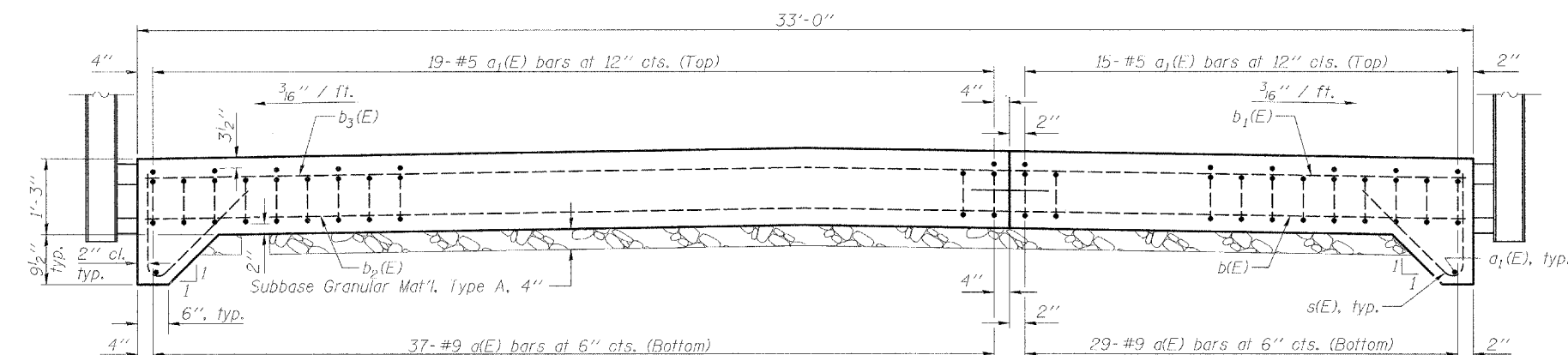
Notes:

- Removal of existing approach beams are included in Removal of Existing Precast Concrete Units.
- See roadway plans for Approach Slab Removal quantity.
- Removal of Existing Precast Concrete Units and Existing Bridge Approach Pavement shall occur during its respective stage construction and prior to placement of the new deck beams.
- See Special Provisions for Bridge Approach Pavement (Special).
- See sheet 4 of 13 for rail anchor device to be cast in approach pavement.



SECTION A-A

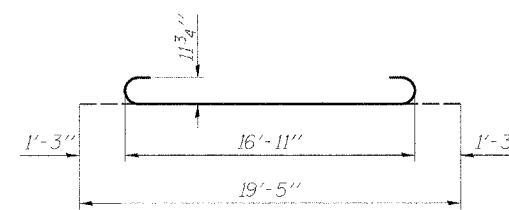
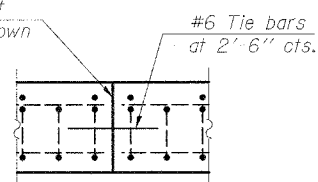
* Stagger No. 9 a(E) bars as shown on plan.



SECTION B-B

Longitudinal Construction Joint in accordance with details shown on Standard 420001

LONGITUDINAL CONSTRUCTION JOINT



BAR a(E)

BAR LIST

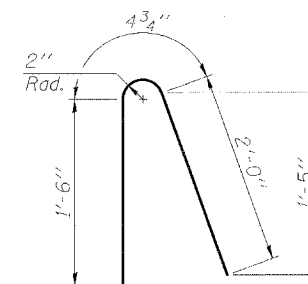
Bar	No.	Size	Length	Shape
a(E)	132	#9	19'-5"	U
a1(E)	72	#5	19'-5"	—
b(E)	40	#5	14'-0"	—
b1(E)	14	#4	14'-0"	—
b2(E)	40	#5	18'-4"	—
b3(E)	14	#4	18'-4"	—
s(E)	80	#4	3'-11"	N

BILL OF MATERIAL

Item	Unit	Total
Bridge Approach Pavement (Special)	Sq. Yd.	146
Removal of Existing Precast Concrete Units	Sq. Ft.	299

BRIDGE APPROACH PAVEMENT (SPECIAL)
F.A.P. ROUTE 328 - SECTION (8BR-D)B-1

WAYNE COUNTY
STATION 719+63.09
STRUCTURE NO. 096-0020



BAR s(E)

HORNER &
SHIFRIN, INC.
ENGINEERS