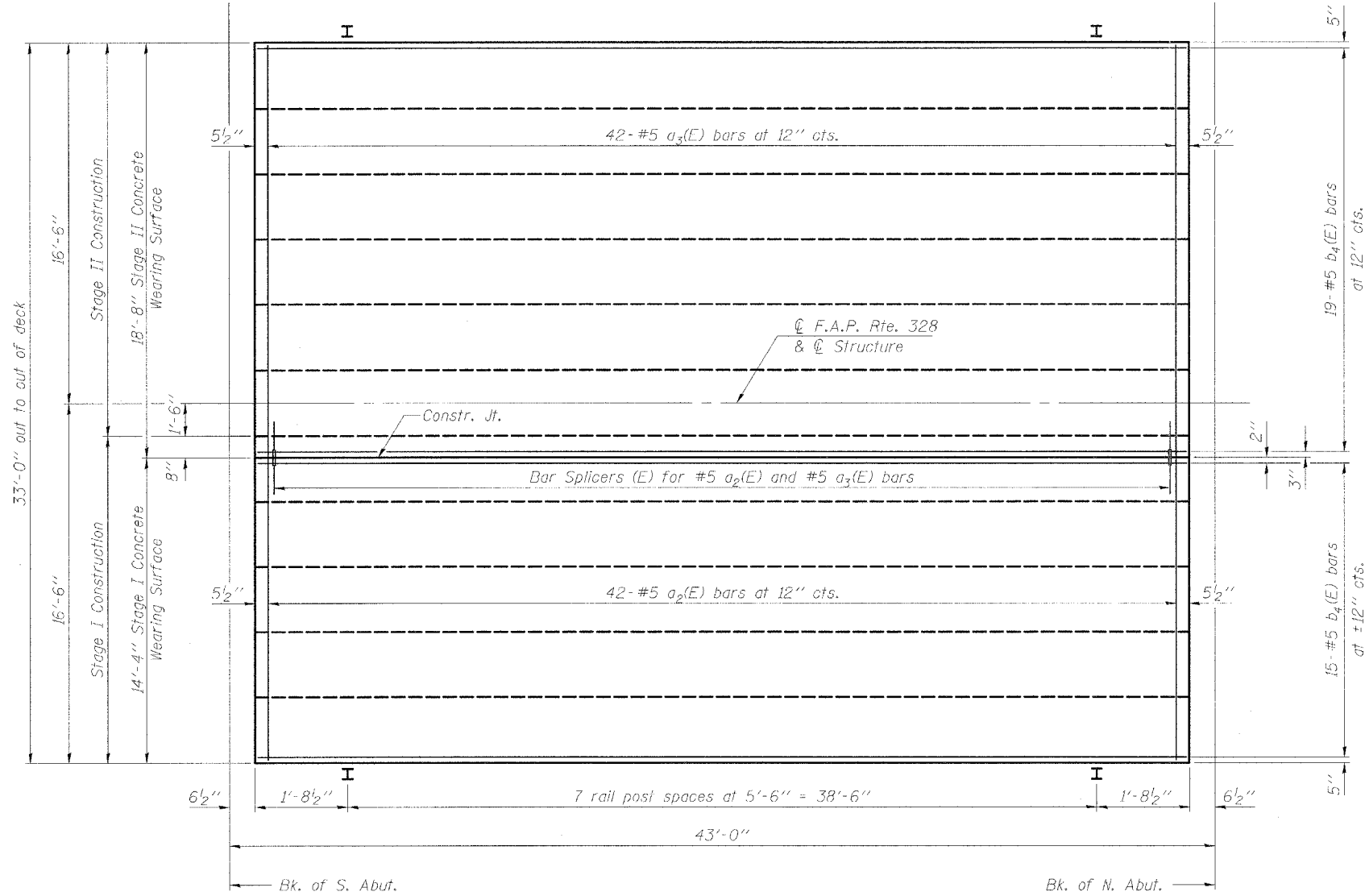
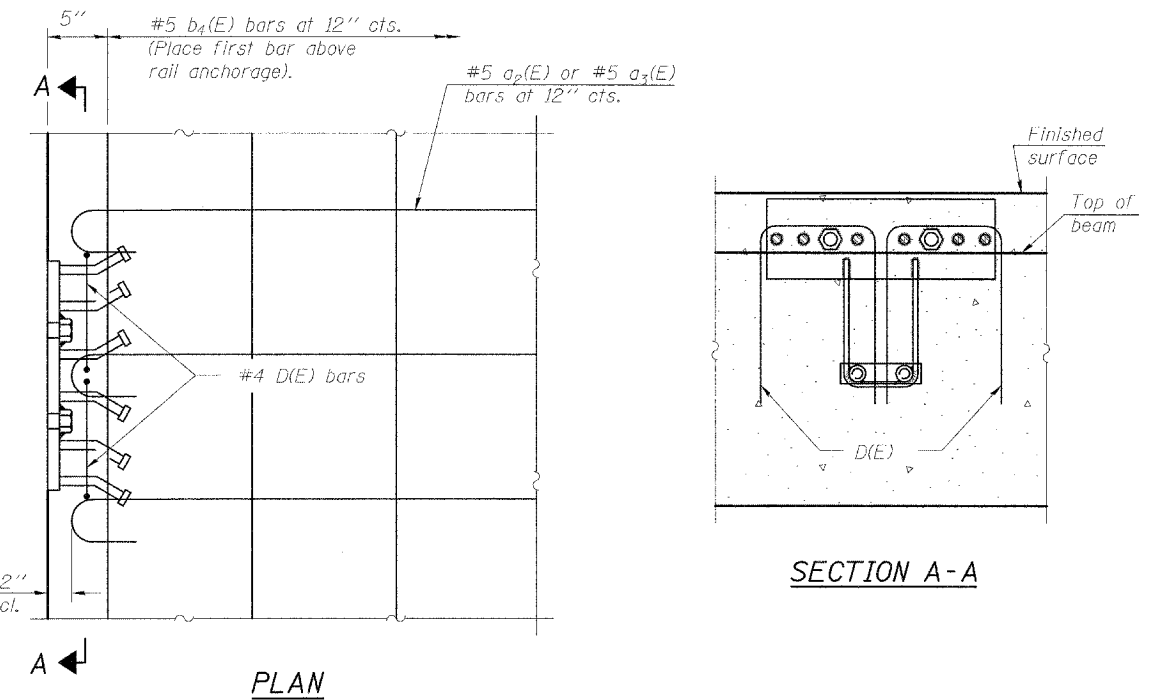


Contract #74003



Notes:
Rail spacing the same on both sides of the bridge.
See sheet 5 of 13 for end of bridge rail location.

PLAN

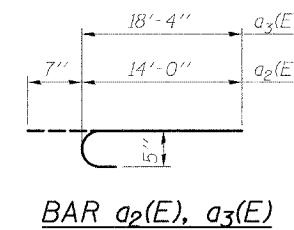


PLAN

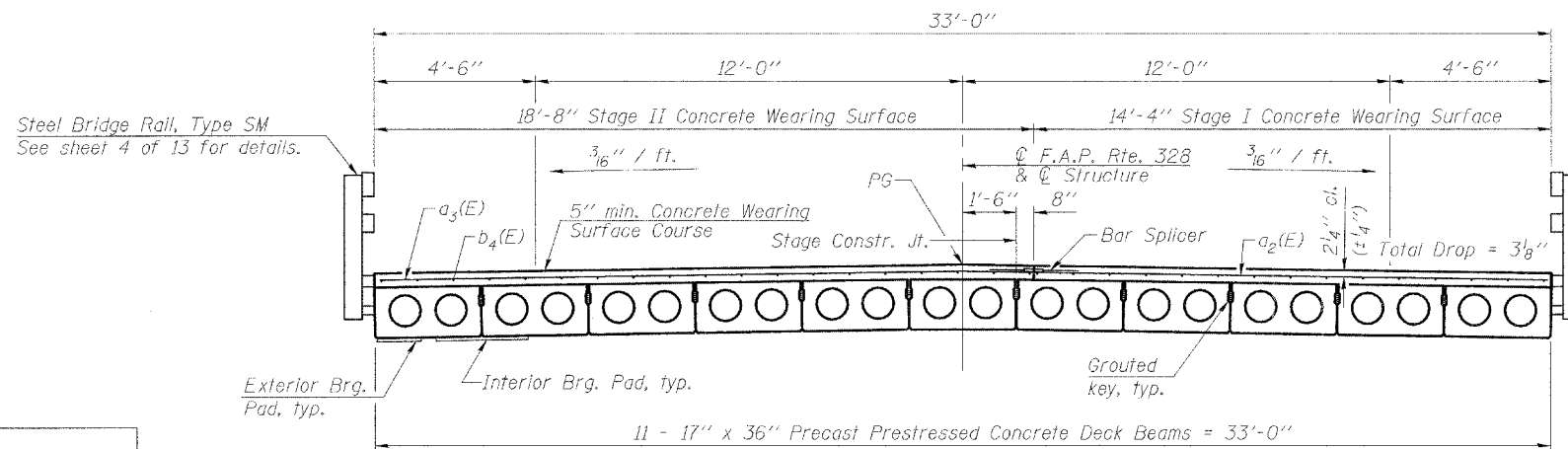
Notes:
The rail anchorage shall be cast with the beam and the wearing surface shall be cast in the field. Formwork necessary for the wearing surface may be secured utilizing the bottom rail anchorage inserts and/or additional inserts cast into the beam. Drilling into the beam will not be permitted.

SUPERSTRUCTURE
BILL OF MATERIALS

Bar	No.	Size	Length	Shape
a ₂ (E)	42	#5	14'-7"	U
a ₃ (E)	42	#5	18'-11"	U
b ₄ (E)	34	#5	41'-7"	—
Reinforcement Bars, Epoxy Coated			Pound	2,940
Concrete Wearing Surface			Sq. Yd.	154



BAR a₂(E), a₃(E)



CROSS SECTION

DESIGNED	JJD
CHECKED	EML
DRAWN	JJD
CHECKED	EML

HORNER & SHIFRIN, INC.
ENGINEERS

SUPERSTRUCTURE DETAILS
F.A.P. ROUTE 328 - SECTION (BBR-1)B-1
WAYNE COUNTY
STATION 719+63.09
STRUCTURE NO. 096-0020