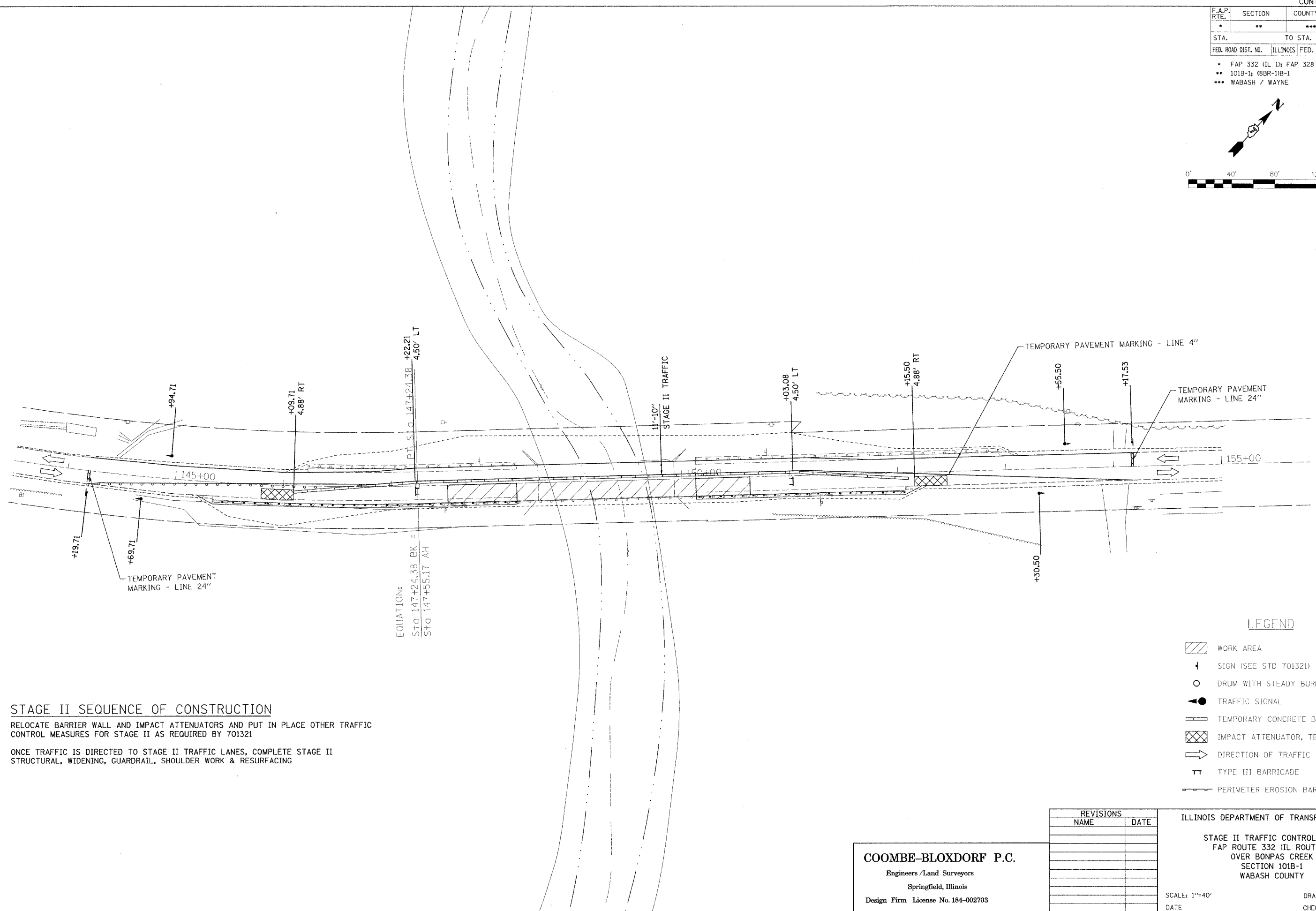
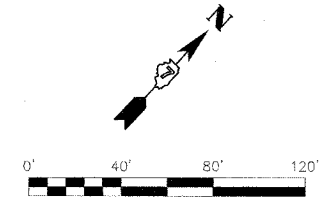


F.A.P. RTE.	SECTION	COUNTY	TOTAL SHEETS	SHEET NO.
*	**	***	68	47
STA.		TO STA.		
FED. ROAD DIST. NO.		ILLINOIS	FED. AID PROJECT	

- * FAP 332 (IL 1); FAP 328 (US 45)
- ** 101B-1; (8BR-1)B-1
- *** WABASH / WAYNE



STAGE II SEQUENCE OF CONSTRUCTION
 RELOCATE BARRIER WALL AND IMPACT ATTENUATORS AND PUT IN PLACE OTHER TRAFFIC CONTROL MEASURES FOR STAGE II AS REQUIRED BY 701321
 ONCE TRAFFIC IS DIRECTED TO STAGE II TRAFFIC LANES, COMPLETE STAGE II STRUCTURAL, WIDENING, GUARDRAIL, SHOULDER WORK & RESURFACING

LEGEND

- WORK AREA
- SIGN (SEE STD 701321)
- DRUM WITH STEADY BURNING LIGHT
- TRAFFIC SIGNAL
- TEMPORARY CONCRETE BARRIER
- IMPACT ATTENUATOR, TEMPORARY
- DIRECTION OF TRAFFIC
- TYPE III BARRICADE
- PERIMETER EROSION BARRIER

REVISIONS	
NAME	DATE

COOMBE-BLOXDORF P.C.
 Engineers / Land Surveyors
 Springfield, Illinois
 Design Firm License No. 184-002703

ILLINOIS DEPARTMENT OF TRANSPORTATION
 STAGE II TRAFFIC CONTROL PLAN
 FAP ROUTE 332 (IL ROUTE 1)
 OVER BONPAS CREEK
 SECTION 101B-1
 WABASH COUNTY
 SCALE: 1"=40'
 DATE
 DRAWN BY
 CHECKED BY

Plot Date: 5/17/2007
 Plot Time: 8:26:07 AM
 File Name: R:\Projects\2007\101B-1\Drawings\Construction\Plan\15_stage_ii_traffic.dgn
 Plot Scale: 1"=40'
 User: jrb
 Device: HPGL-2