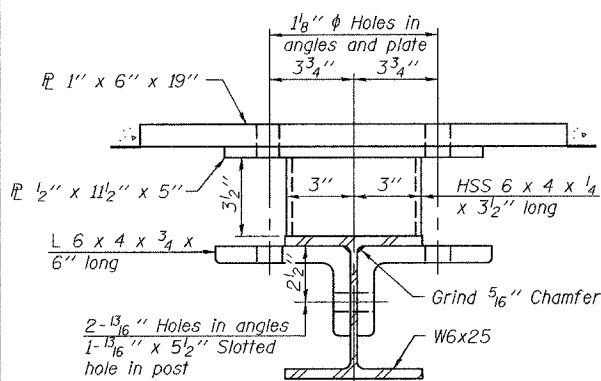
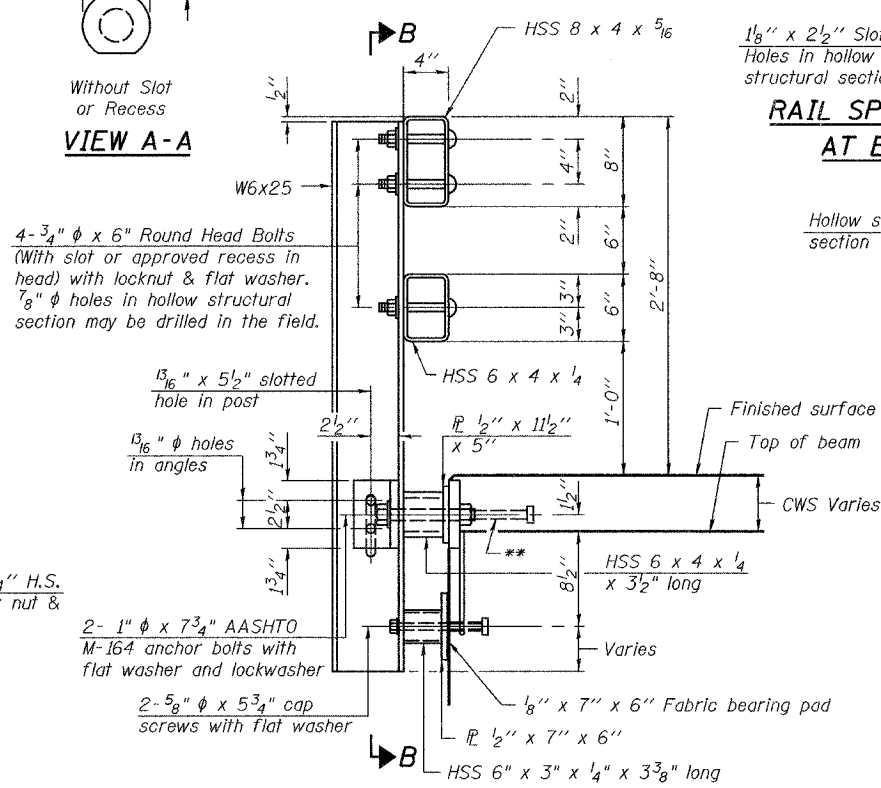


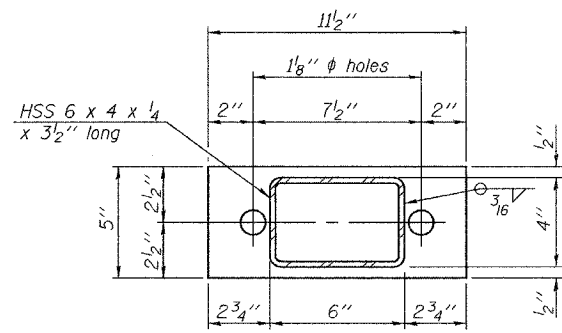
SECTION B-B



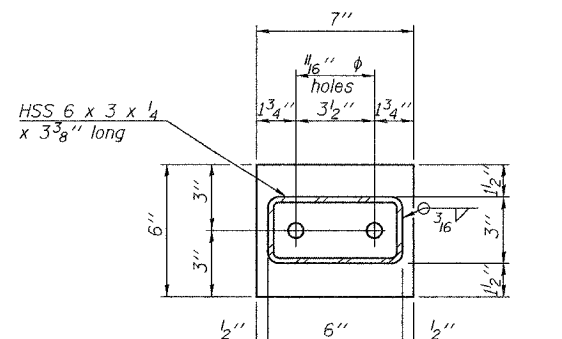
SECTION C-C



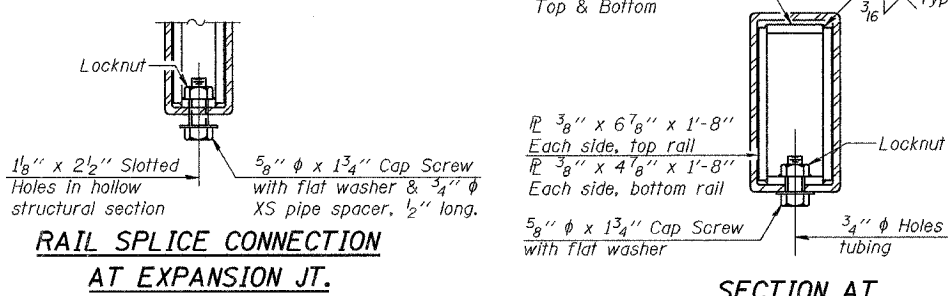
SECTION AT RAIL POST



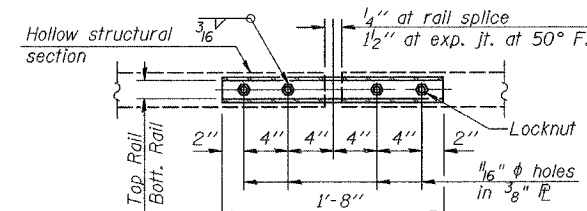
PLAN-BOTT. SPLICE AT RAIL POST



PLAN-BOTT. SPLICE AT RAIL POST

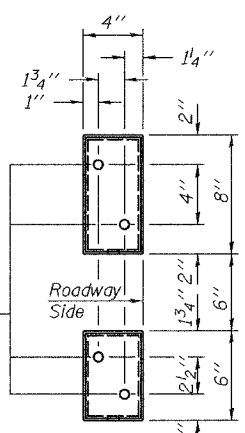


RAIL SPLICE CONNECTION AT EXPANSION JT.

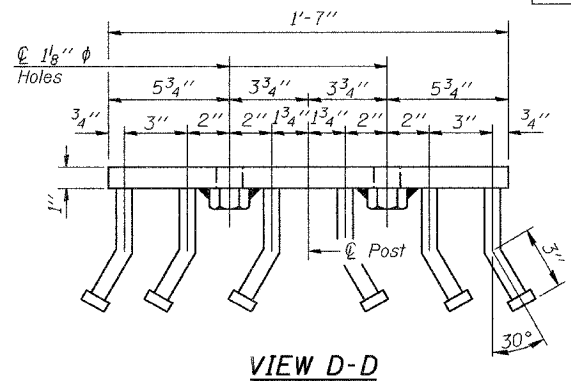


PLAN-BOTT. SPLICE AT RAIL SPLICE TYPICAL

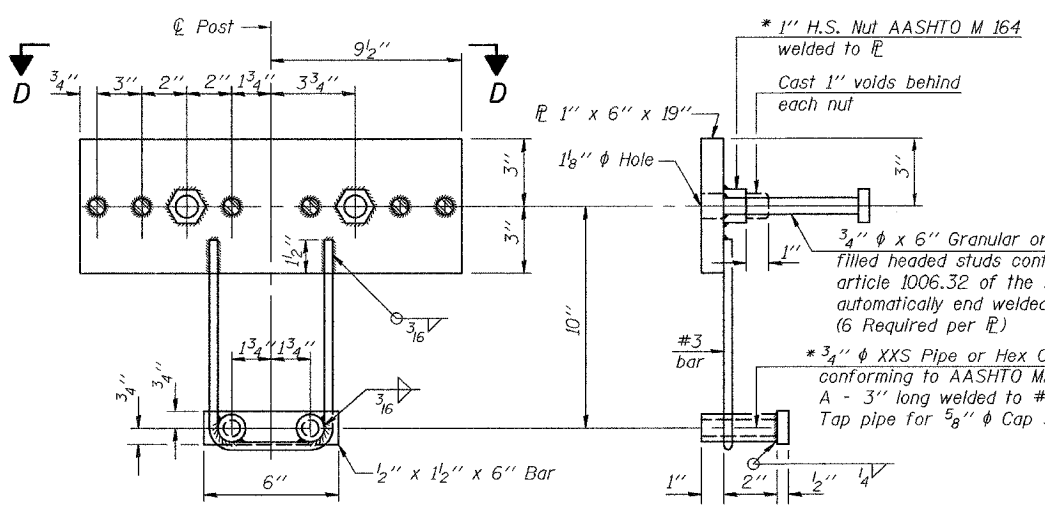
SECTION AT RAIL SPLICE



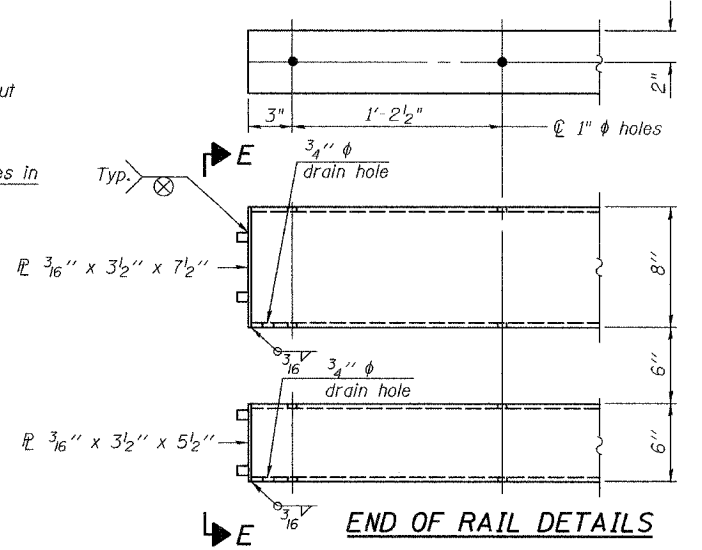
SECTION AT RAIL SPLICE



VIEW D-D



ANCHOR DEVICE



END OF RAIL DETAILS

NOTES

- All field drilled holes shall be coated with an approved zinc rich paint before erection.
- For multi-span bridges, sufficient 1/4" x 6" x 1'-2" galvanized steel shims shall be provided to align rail between adjacent spans. Cost included with Steel Railing, Type SM.
- Steel rail elements shall be galvanized according to Article 509.05 of the Standard Specifications.
- ** The studs of the anchor devices shall be placed below the top reinforcement bars and the outermost longitudinal reinforcement bar shall be placed directly above the studs of the rail post anchor device.

BILL OF MATERIAL

Item	Unit	Quantity
Steel Railing, Type SM	Foot	332

ILLINOIS DEPARTMENT OF TRANSPORTATION

SHEET TITLE: STEEL RAILING, TYPE SM WITH CONCRETE WEARING SURFACE

PROJECT: FAP 332 OVER BONPAS CREEK, FAP ROUTE 332 (IL 1) SECTION 101B-1, WABASH COUNTY, STATION 149+30, SN 093-0005

SCALE: 1/8" = 1'-0"

DATE: 03/15/07

DRAWN BY: TFG

CHECKED BY: BG/CME/MCB

DRAWING NO. 8

COOMBE-BLOXDORF P.C. Engineers / Land Surveyors Springfield, Illinois Design Firm License No. 184-002703

OF 11 SHTS

PLOT DATE = 03/15/2007
 FILE NAME = \\083-0005-sht-9-r-34-type-sm.dgn
 PLOT SCALE = 0.010000 1' / IN.
 USER NAME = TFG

* Threaded areas shall be plugged or blocked off during casting of beam. Galvanized after fabrication.