

F.A.P. RTE.	SECTION	COUNTY	TOTAL SHEETS	SHEET NO.
332	(F-1,1)RS-4	CLARK	46	1

D-95-010-04

STATE OF ILLINOIS
DEPARTMENT OF TRANSPORTATION

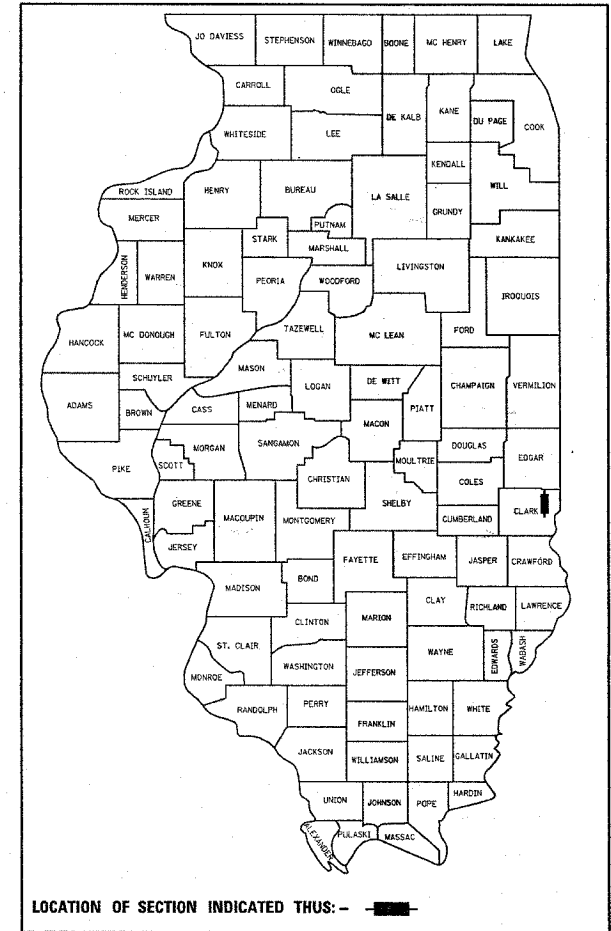
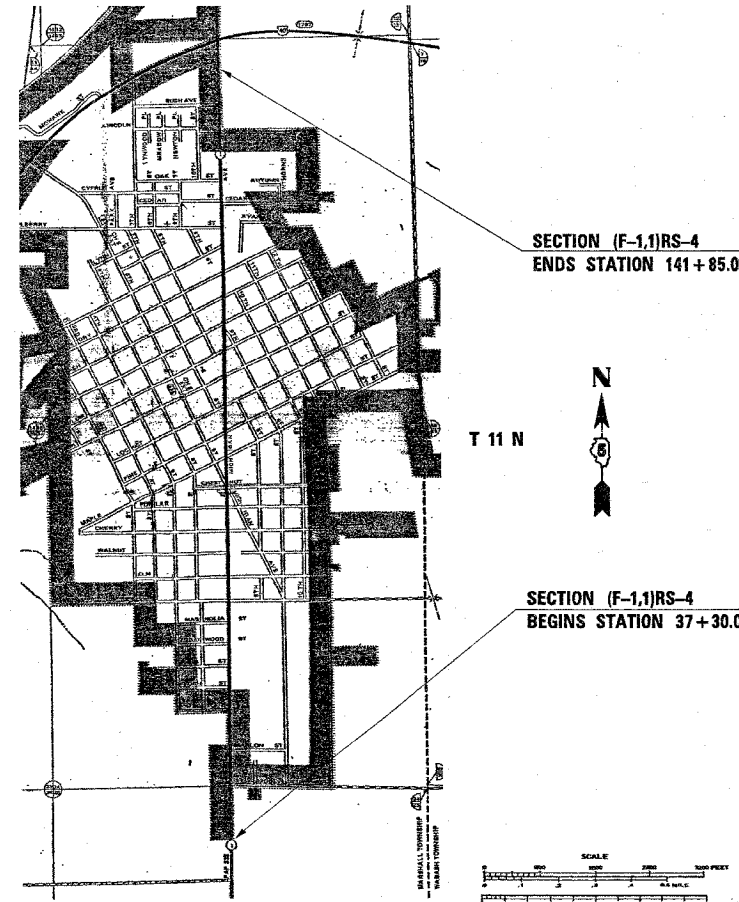
DIVISION OF HIGHWAYS

**PROPOSED
HIGHWAY PLANS**

FAP ROUTE 332 (IL 1)
SECTION (F-1,1)RS-4
PROJECT NHF -0332(088)
CLARK COUNTY

C-97-036-06

RESURFACING FROM SCL OF MARSHALL
TO 0.15 MILES SOUTH OF U.S. 40



LOCATION OF SECTION INDICATED THUS: - ■ -

STATE OF ILLINOIS
DEPARTMENT OF TRANSPORTATION
DIVISION OF HIGHWAYS

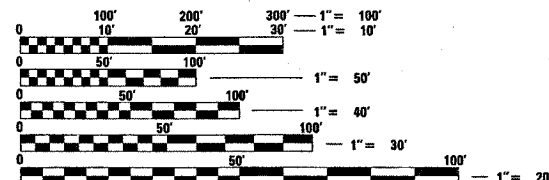
SUBMITTED MARCH 15, 20 07
Christ M. Reed
DEPUTY DIRECTOR OF HIGHWAYS, REGION ENGINEER
May 11, 20 07
Eric E. Sherrill
ENGINEER OF DESIGN AND ENVIRONMENT
May 11, 20 07
Milton R. Sees
DIRECTOR OF HIGHWAYS, CHIEF ENGINEER

**PRINTED BY THE AUTHORITY
OF THE STATE OF ILLINOIS**

FOR INDEX OF SHEETS, SEE SHEET NO. 2
FOR SUMMARY OF QUANTITIES, SEE SHEET NO. 6-7

CURRENT ADT
8,721 (2006)

DESIGN DESIGNATION
N/A



FULL SIZE PLANS HAVE BEEN PREPARED USING STANDARD ENGINEERING SCALES. REDUCED SIZED PLANS WILL NOT CONFORM TO STANDARD SCALES. IN MAKING MEASUREMENTS ON REDUCED PLANS, THE ABOVE SCALES MAY BE USED.

J.U.L.I.E.
JOINT UTILITY LOCATION INFORMATION FOR EXCAVATION
1-800-892-0123

R 12 W
TOTAL LENGTH OF SECTION & PROJECT = 10,455.00 FEET = 1.980 MILES
NET LENGTH OF SECTION & PROJECT = 10,455.00 FEET = 1.980 MILES

PROJECT ENGINEER: TIM BRANDENBURG (217)465-4181

SQUAD LEADER: MICHAEL LERDY

DESIGNER: DANA HENNESSY

PLOT DATE = 3/13/2007
FILE NAME = c:\p\proj\74143\74143.dwg
USER NAME = staffrank

CONTRACT NO. 74143