

SWB+tzf+W
3/29/2007
c:\projects\74160d\shcover.74160.dg

CONTRACT NO. 74160

F.A.P. RTE.	SECTION	COUNTY	TOTAL SHEETS	SHEET NO.
328	(2,3,4)RS-2	EFF./CLAY	17	1

STATE OF ILLINOIS
DEPARTMENT OF TRANSPORTATION
DIVISION OF HIGHWAYS

**PROPOSED
HIGHWAY PLANS**

FAP ROUTE 328 (U.S.45)
SECTION (2,3,4)RS-2
RESURFACING (SMART)
EFFINGHAM /CLAY COUNTY

FOR INDEX OF SHEETS, SEE SHEET NO. 2

STATION EQUATIONS

- 421+55.20 BK = 421+52.02 AH
- 435+06.06 BK = 435+22.85 AH
- 444+85.21 BK = 445+26.45 AH
- 521+00.00 BK = 521+50.74 AH
- 535+28.70 BK = 544+14.60 AH
- 650+73.27 BK = 656+42.83 AH
- 746+35.97 BK = 751+49.07 AH

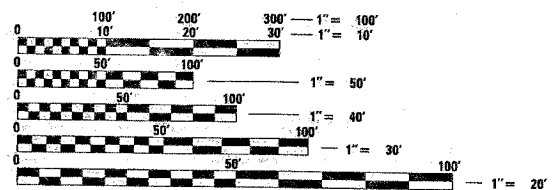
SAVE & PROTECT MONUMENTS

- STA 365+54.27 1.58' LT IP W/CAP
- STA 392+24.11 2.49' RT PK NAIL
- STA 418+93.27 10.45' LT PK NAIL

BRIDGE OMISSIONS

- STA 439+08 TO STA 440+27
- STA 503+99 TO STA 506+66
- STA 634+52 TO STA 636+39
- STA 639+01 TO STA 640+77
- STA 806+43 TO STA 806+91

ADT (2006) = 2900



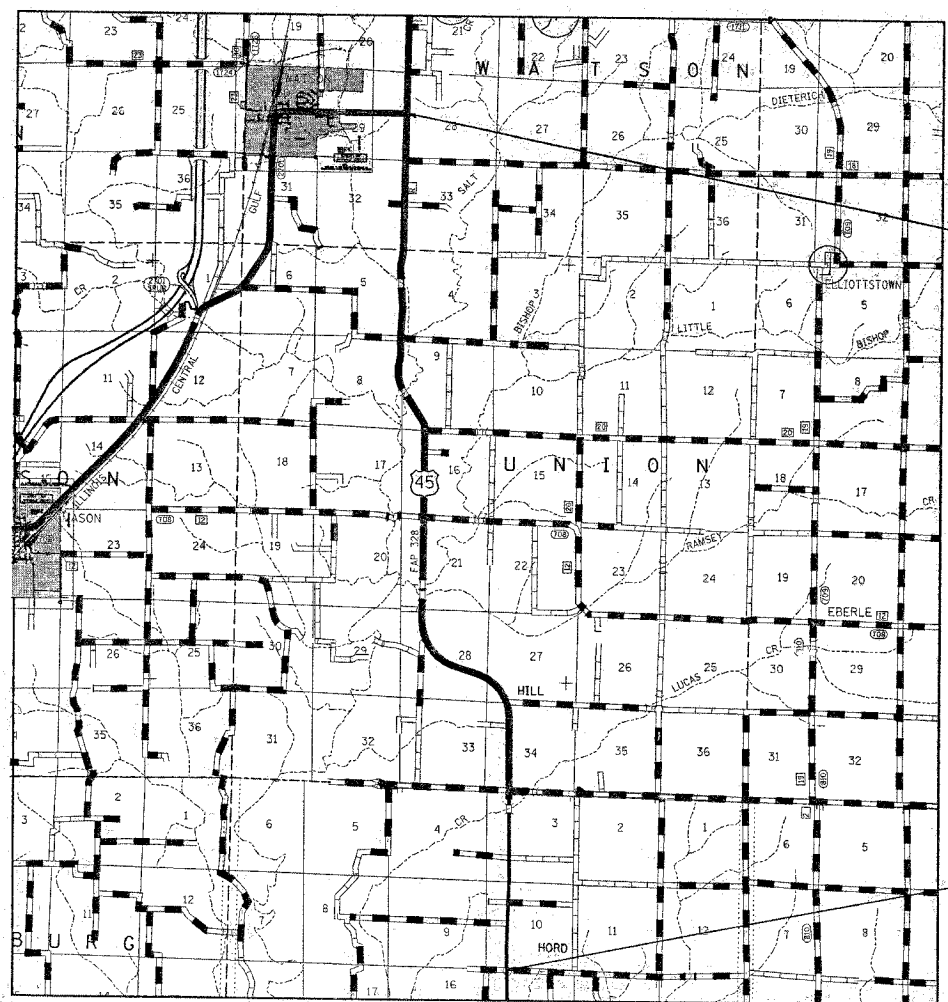
FULL SIZE PLANS HAVE BEEN PREPARED USING STANDARD ENGINEERING SCALES. REDUCED SIZED PLANS WILL NOT CONFORM TO STANDARD SCALES. IN MAKING MEASUREMENTS ON REDUCED PLANS, THE ABOVE SCALES MAY BE USED.

J.U.L.I.E.
JOINT UTILITY LOCATION INFORMATION FOR EXCAVATION
1-800-892-0123

CONTRACT NO. 74160

PROJECT ENGINEER: MARK DAUGHERY
SQUAD LEADER: BRIAN LEWIS
DESIGNER: SOLOMON DZAKUMA
TELEPHONE: 217/342-3951 EX 341

C-97-066-06

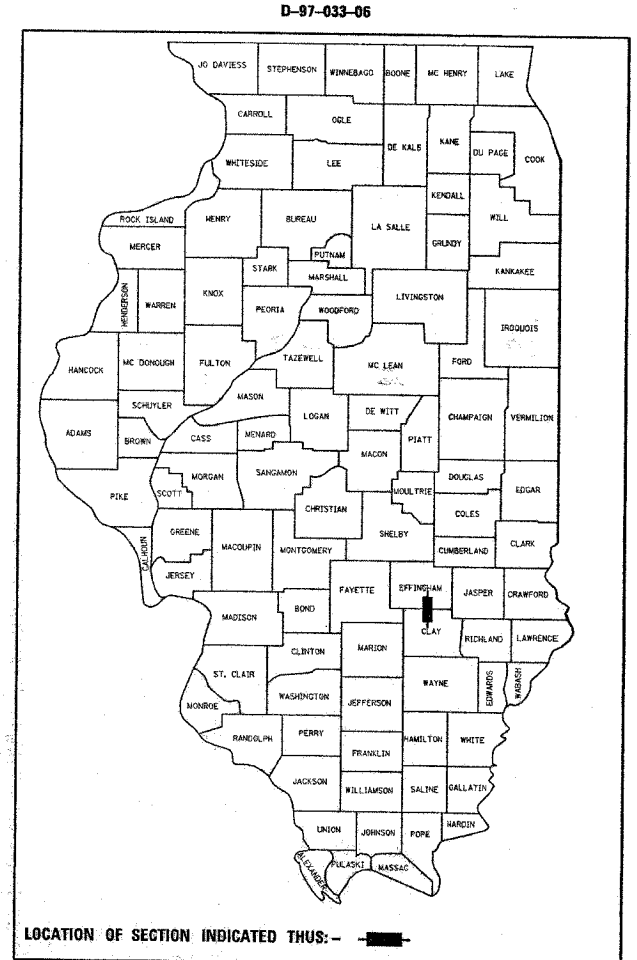


PROJECT BEGINS
STA 349+65



PROJECT ENDS
STA 967+50

GROSS LENGTH = 61785 FEET = 11.70 MILES
NET LENGTH = 58916 FEET = 11.16 MILES



LOCATION OF SECTION INDICATED THUS: - [Symbol] -

STATE OF ILLINOIS
DEPARTMENT OF TRANSPORTATION
DIVISION OF HIGHWAYS

SUBMITTED *March 29th* 2007

Christine M. Reedy
DEPUTY DIRECTOR OF HIGHWAYS, REGION ENGINEER

May 11, 2007
Eric E. Harsh
ENGINEER OF DESIGN AND ENVIRONMENT

May 11, 2007
Michael S. Sore
DIRECTOR OF HIGHWAYS, CHIEF ENGINEER

**PRINTED BY THE AUTHORITY
OF THE STATE OF ILLINOIS**

F.A.P. RTE.	SECTION	COUNTY	TOTAL SHEETS	SHEET NO.
328	(2,3,4)RS-2	EFF./CLAY	17	2
STA.		TO STA.		
FED. ROAD DIST. NO.	ILLINOIS	FED. AID PROJECT		

GENERAL NOTES

THIS PROJECT IS LOCATED ON US 45 AND LIES IN BOTH EFFINGHAM AND CLAY COUNTIES. THE PROJECT BEGINS AT ILLNOIS 37 AND EXTENDS TO BIBLE GROVE ROAD. THE WORK INCLUDED IN THIS SECTION, (2,3,4) RS-2, CONSISTS OF PAVEMENT PATCHING, MILLING, BITUMINOUS RESURFACING, AND OTHER WORK NECESSARY TO COMPLETE THE SECTION.

PAVEMENT MARKING SHALL BE APPLIED IN ACCORDANCE WITH SECTION 780 OF THE STANDARD SPECIFICATIONS. SHORT TERM PAVEMENT MARKING SHALL BE APPLIED TO THE MILLED SURFACE, BITUMINOUS MATERIALS (PRIME COAT), AND BITUMINOUS SURFACE COURSE AS SPECIFIED IN SECTION 703 OF THE STANDARD SPECIFICATIONS. TEMPORARY TAPE SHALL BE USED ON THE SURFACE COURSE AND PAINT SHALL BE USED ON MILLED SURFACE.

ANY SECTION CORNERS DISTURBED DURING CONSTRUCTION SHALL BE REESTABLISHED BY A REGISTERED LAND SURVEYOR AT THE CONTRACTOR'S EXPENSE. A LIST OF MONUMENTS TO PRESERVE AND PROTECT IS INCLUDED ON THE COVER SHEET.

THE CONTRACTOR WILL PROVIDE INTERNET ACCESS TO THE BITUMINOUS PLANT QUALITY CONTROL LAB SO THAT BITUMINOUS PLANT REPORTS CAN BE E-MAILED TO THE DISTRICT HEADQUARTERS. THIS WORK SHALL BE INCLUDED IN THE COST OF ALL BITUMINOUS ITEMS.

FOR THE PAY ITEM BITUMINOUS MATERIALS (PRIME COAT), THE CONTRACTOR SHALL USE EITHER RC-70 OR AN EMULSIFIED POLYMER PRIME SS-1HP.

THE TOTAL QUANTITY OF PAINT PAVEMENT MARKING-LINE 4 INCH CONSISTS OF 44,580 FEET OF YELLOW AND 117,830 FEET OF WHITE.

THE EXISTING PAVEMENT SHALL BE PATCHED IN ACCORDANCE WITH SECTION 442 OF THE STANDARD SPECIFICATIONS AND THE SPECIAL PROVISIONS. THE QUANTITY OF PATCHING SHOWN ON THE PLANS IS AN ESTIMATE ONLY AND THE FINAL LOCATIONS AND QUANTITY SHALL BE DETERMINED BY THE ENGINEER IN THE FIELD.

ALL OF THE MATERIAL GENERATED BY THE HOT-MIX ASPHALT SURFACE REMOVAL OPERATION BETWEEN THE NORTH END OF THE PROJECT AND STATION 392+50 SHALL BECOME THE PROPERTY OF THE STATE AND SHALL BE STOCKPILED ON THE ABANDONED PAVEMENT AT DUTCH LANE ALONG US 45 SOUTH OF EFFINGHAM.

THE FOLLOWING MIXTURE REQUIREMENTS ARE APPLICABLE FOR THIS PROJECT:

MIXTURE USE: SURFACE
 APPLICATION: HOT-MIX ASPHALT SURFACE COURSE
 PG GRADE: PG 64-22
 DESIGN AIR VOIDS: 4.0% @ NDESIGN = 70
 MIXTURE COMPOSITION: IL-9.5
 FRICTION AGGREGATE: MIXTURE C

MIXTURE USE: PATCHING
 APPLICATION: HOT-MIX ASPHALT BINDER COURSE
 PG GRADE: PG 64-22
 DESIGN AIR VOIDS: 4.0% @ NDESIGN = 70
 MIXTURE COMPOSITION: IL-19.0
 FRICTION AGGREGATE: N/A

THE FOLLOWING RATES OF APPLICATION HAVE BEEN USED IN CALCULATING PLAN QUANTITIES:

AGGREGATE (PRIME COAT)	4.0 LB/SQ YD
BIT MATLS (PRIME COAT)	0.1 GAL/SQ YD
BITUMINOUS CONCRETE	112 LBS/SQ YD/INCH

INDEX OF SHEETS

SHEET NO	TITLE
1	COVER SHEET
2	INDEX OF SHEETS AND GENERAL NOTES
3	SUMMARY OF QUANTITIES
4-5	TYPICAL SECTIONS
6	RESURFACING SCHEDULE
7-17	PLAN SHEETS

THE FOLLOWING STANDARDS ARE PART OF THESE PLANS AND ARE INCLUDED FOLLOWING SHEET NUMBER 17:

000001-04	STANDARD SYMBOLS, ABBREVIATIONS AND PATTERNS
442201-02	CLASS C AND D PATCHES
701006-02	OFF-ROAD OPERATIONS, 2L, 2W, 15' TO 24' FROM PAVEMENT EDGE
701011-01	OFF-ROAD MOVING OPERATIONS, 2L, 2W, DAY ONLY
701201-02	LANE CLOSURE, 2L, 2W, DAY ONLY, FOR SPEEDS >= 45 MPH
701301-02	LANE CLOSURE, 2L, 2W, SHORT TIME OPERATIONS
701306-01	LANE CLOSURE, 2L, 2W, SLOW MOVING OPERATIONS, DAY ONLY, FOR SPEEDS >= 45 MPH
701311-02	LANE CLOSURE, 2L, 2W, MOVING OPERATIONS - DAY ONLY
701336-04	LANE CLOSURE, 2L, 2W, WORK AREAS IN SERIES, FOR SPEEDS >= 45 MPH
702001-06	TRAFFIC CONTROL DEVICES
780001-01	TYPICAL PAVEMENT MARKING
781001-02	TYPICAL APPLICATIONS RAISED REFLECTIVE PAVEMENT MARKERS

PLOT DATE = 3/24/2007
 FILE NAME = c:\projects\74160\sheet\74160.dgn
 PLOT SCALE = 1/8"=1'-0" / IN.
 USER NAME = snczr

REVISIONS	
NAME	DATE

ILLINOIS DEPARTMENT OF TRANSPORTATION

**GENERAL NOTES
&
INDEX OF SHEETS**

SCALE: VERT. _____
 HORIZ. _____
 DATE _____

DRAWN BY _____
 CHECKED BY _____

F.A.P. RTE.	SECTION	COUNTY	TOTAL SHEETS	SHEET NO.
328	2,3,4RS-2	EFF./CLAY	17	3
STA.		TO STA.		
FED. ROAD DIST. NO.		ILLINOIS FED. AID PROJECT		

SUMMARY OF QUANTITIES			TOTAL QUANTITIES	CONSTRUCTION TYPE CODE	
CODE NO	ITEM	UNIT		1000	1000
				EFFINGHAM COUNTY	CLAY COUNTY
20201006	GRADING AND SHAPING SHOULDERS	UNIT	851	609	242
40600100	BITUMINOUS MATERIALS (PRIME COAT)	GALLON	16976	12168	4808
40600300	AGGREGATE (PRIME COAT)	TON	339	243	96
40600990	TEMPORARY RAMP	SQ YD	175	146	29
40603315	HOT-MIX ASPHALT SURFACE COURSE, MIX "C", N70	TON	14260	10221	4039
44000155	HOT-MIX ASPHALT SURFACE REMOVAL, 1 1/2"	SQ YD	169763	121679	48084
44201815	CLASS D PATCHES, TYPE II, 14 INCH	SQ YD	1579	1243	336
44201819	CLASS D PATCHES, TYPE III, 14 INCH	SQ YD	167	150	17
44201821	CLASS D PATCHES, TYPE IV, 14 INCH	SQ YD	104	76	28
48101200	AGGREGATE SHOULDERS, TYPE B	TON	1116	720	396
67000500	ENGINEER'S FIELD OFFICE, TYPE B	CAL MO	3	2.1	0.9
67100100	MOBILIZATION	L SUM	1	0.7	0.3
70100460	TRAFFIC CONTROL AND PROTECTION, STANDARD 701306	L SUM	1	0.7	0.3
70100600	TRAFFIC CONTROL AND PROTECTION, STANDARD 701336	L SUM	1	0.7	0.3
70300100	SHORT-TERM PAVEMENT MARKING	FOOT	17675	12567	5108
70301000	WORK ZONE PAVEMENT MARKING REMOVAL	SQ FT	1964	1396	568
* 78001110	PAINT PAVEMENT MARKING - LINE 4"	FOOT	162410	122510	39900
* 78100100	RAISED REFLECTIVE PAVEMENT MARKER	EACH	779	565	214

* SPECIALTY ITEMS

PLOT DATE = 5/29/2007
 FILE NAME = C:\pwworkspace\74160\74160.dwg
 PLOT SCALE = 100.0000 / 1.00
 USER NAME = user1234

REVISIONS		NAME	DATE

ILLINOIS DEPARTMENT OF TRANSPORTATION

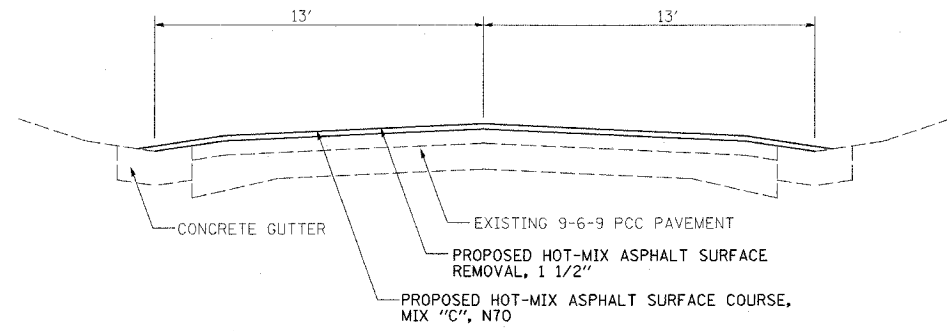
SUMMARY OF QUANTITIES

SCALE: VERT. DRAWN BY

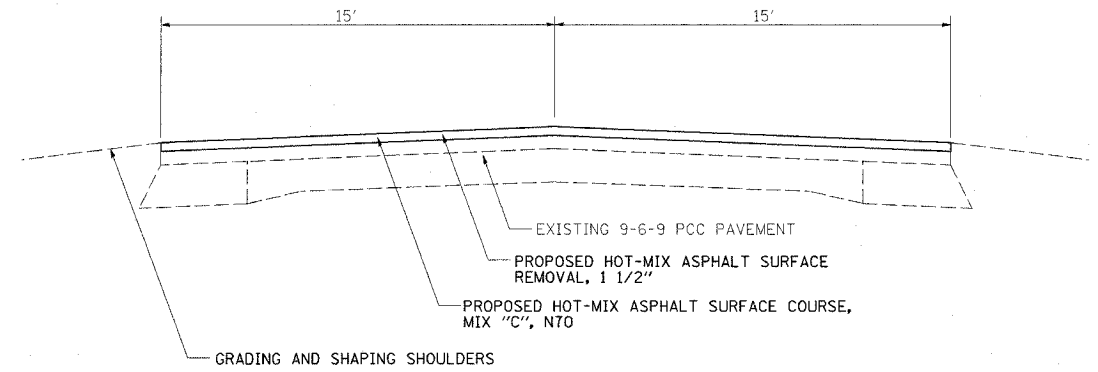
 HORIZ. CHECKED BY

DATE

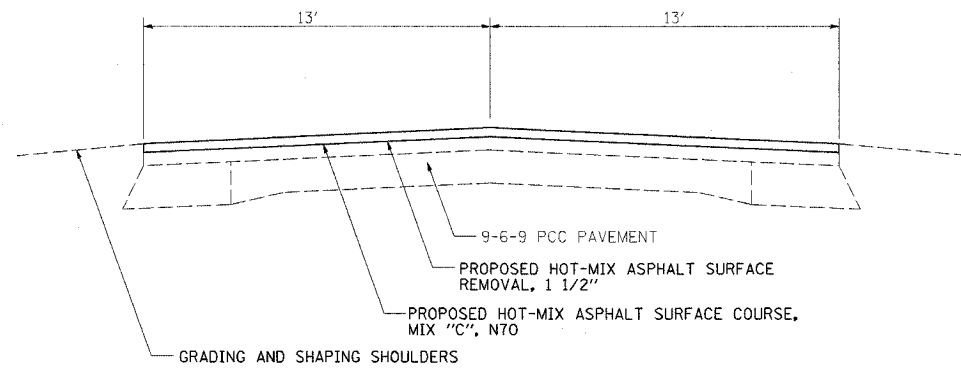
F.A.P. RTE.	SECTION	COUNTY	TOTAL SHEETS	SHEET NO.
328	(2,3,4)RS-2	EFF./CLAY	17	4
STA.		TO STA.		
FED. ROAD DIST. NO.		ILLINOIS	FED. AID PROJECT	



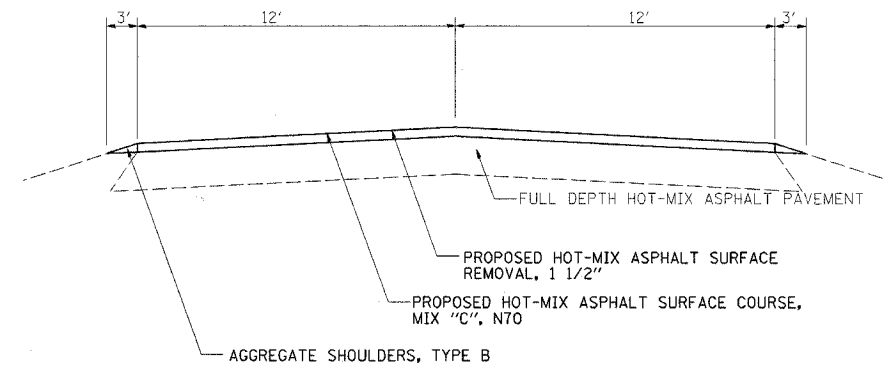
STA 419+00.00 TO STA 426+27.00
 STA 581+31.00 TO STA 585+93.00 EAST SIDE ONLY



STA 485+66 TO STA 521+51
 STA 649+50 TO STA 650+73.27



STA 349+65.00 TO STA 419+00.00
 STA 426+27.00 TO STA 485+66.00
 STA 521+51.00 TO STA 581+31.00
 STA 585+93.00 TO STA 619+50.00
 STA 751+49.07 TO STA 918+00



STA 656+42.83 TO STA 746+35.97
 STA 918+00 TO STA 967+50

PLOT DATE = 3/29/2007
 PLOT SCALE = 1/8\"/>

REVISIONS	
NAME	DATE

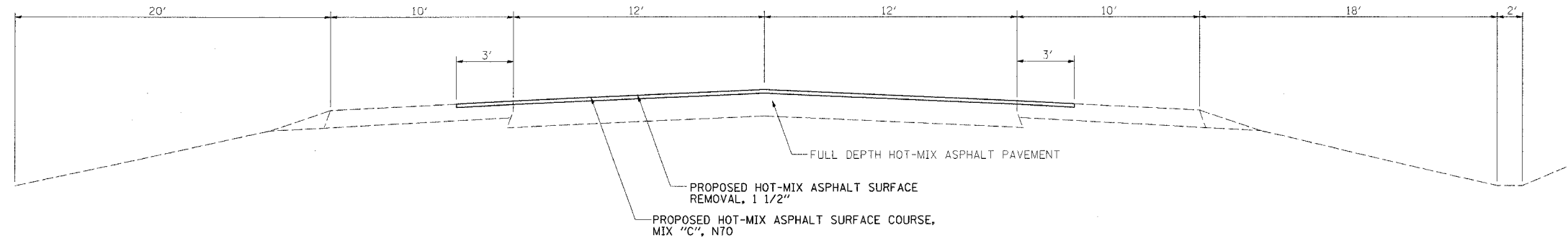
ILLINOIS DEPARTMENT OF TRANSPORTATION

TYPICAL SECTIONS

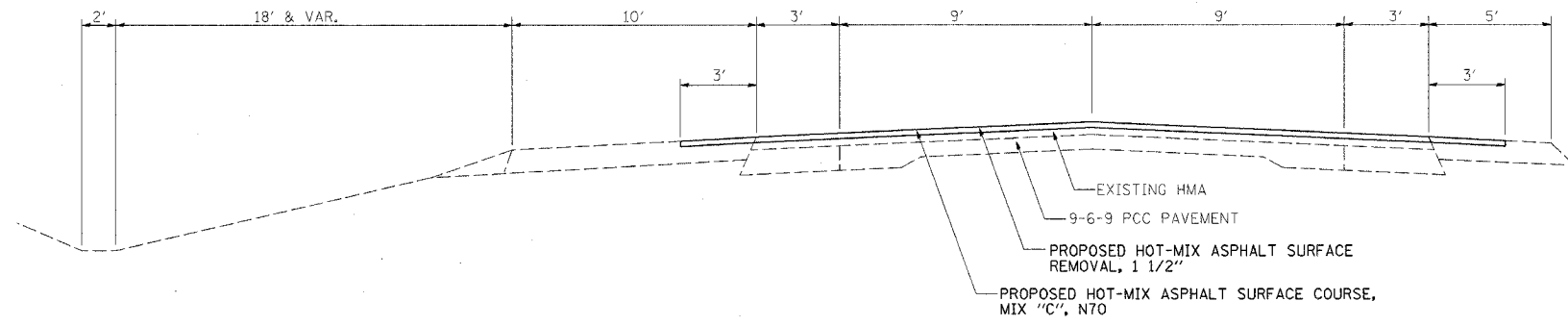
SCALE: VERT.
 HORIZ.
 DATE

DRAWN BY
 CHECKED BY

F.A.P. RTE.	SECTION	COUNTY	TOTAL SHEETS	SHEET NO.
328	12,3,41RS-2	EFF./CLAY	17	5
STA.	TO STA.			
FED. ROAD DIST. NO.	ILLINOIS	FED. AID PROJECT		



STA 623+00.00 TO STA 634+52
 STA 636+39.00 TO STA 639+01
 STA 640+77 TO STA 649+50



STA 620+00 TO STA 623+00

PLOT DATE = 3/28/2007
 PLOT SCALE = 1/8" = 1'-0"
 USER NAME =

REVISIONS	
NAME	DATE

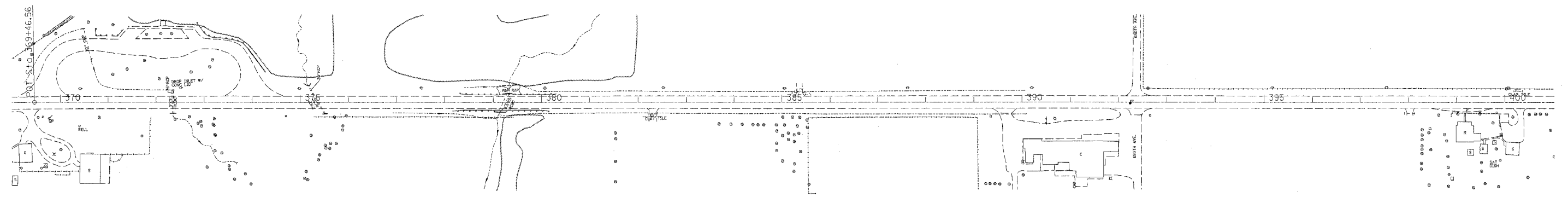
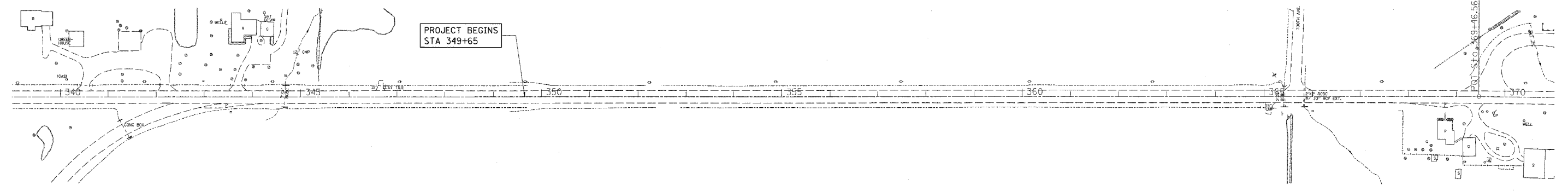
ILLINOIS DEPARTMENT OF TRANSPORTATION

TYPICAL SECTIONS

SCALE: VERT. HORIZ.
 DATE

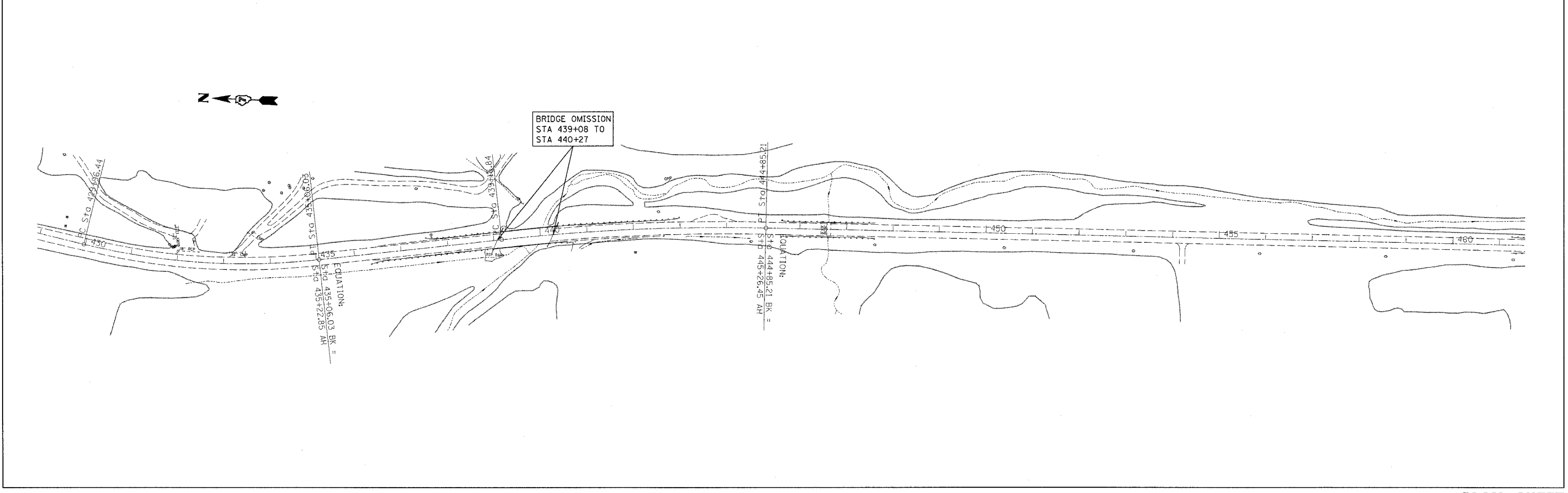
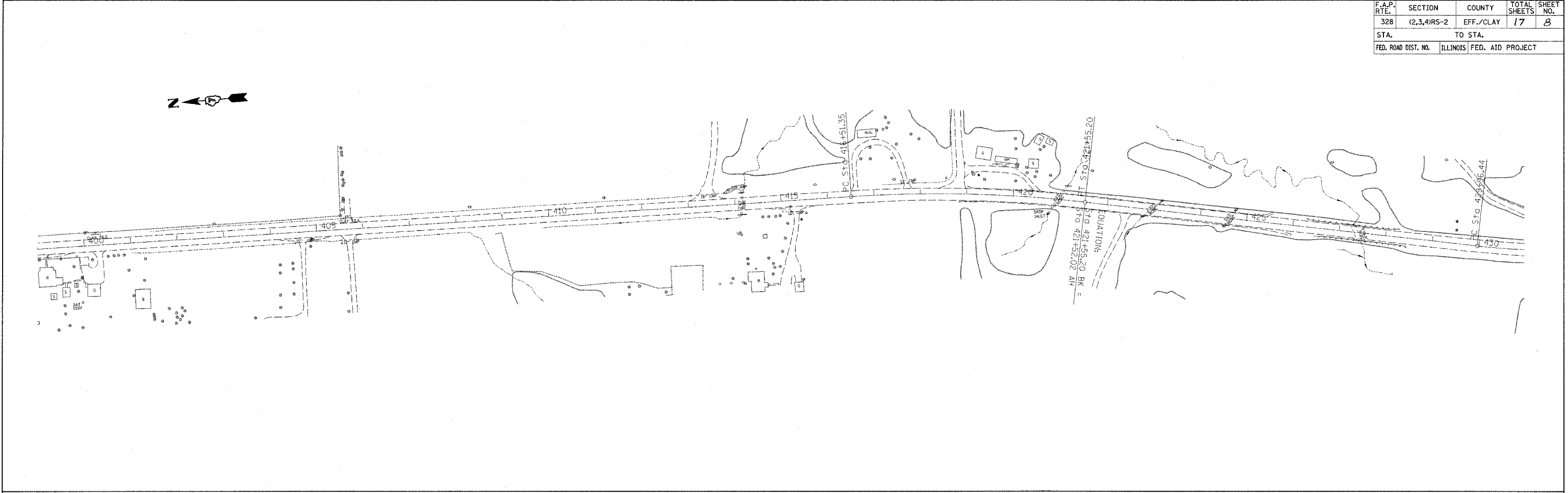
DRAWN BY
 CHECKED BY

F.A.P. RTE.	SECTION	COUNTY	TOTAL SHEETS	SHEET NO.
328	(2,3,4)RS-2	EFF./CLAY	17	7
STA.		TO STA.		
FED. ROAD DIST. NO.	ILLINOIS	FED. AID PROJECT		



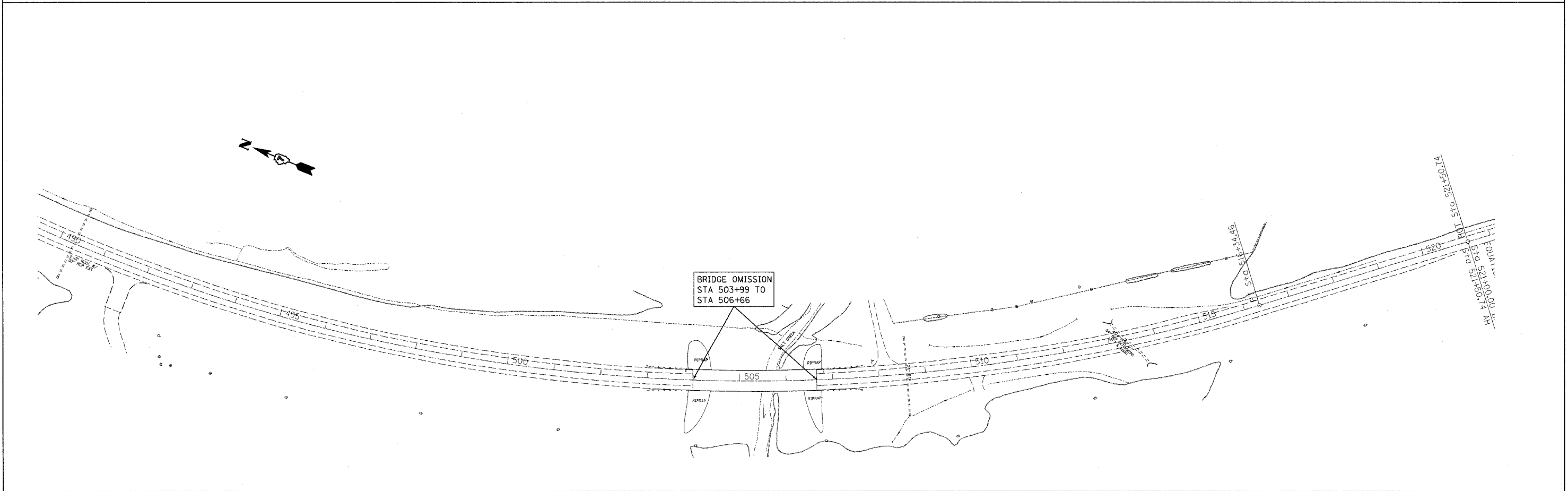
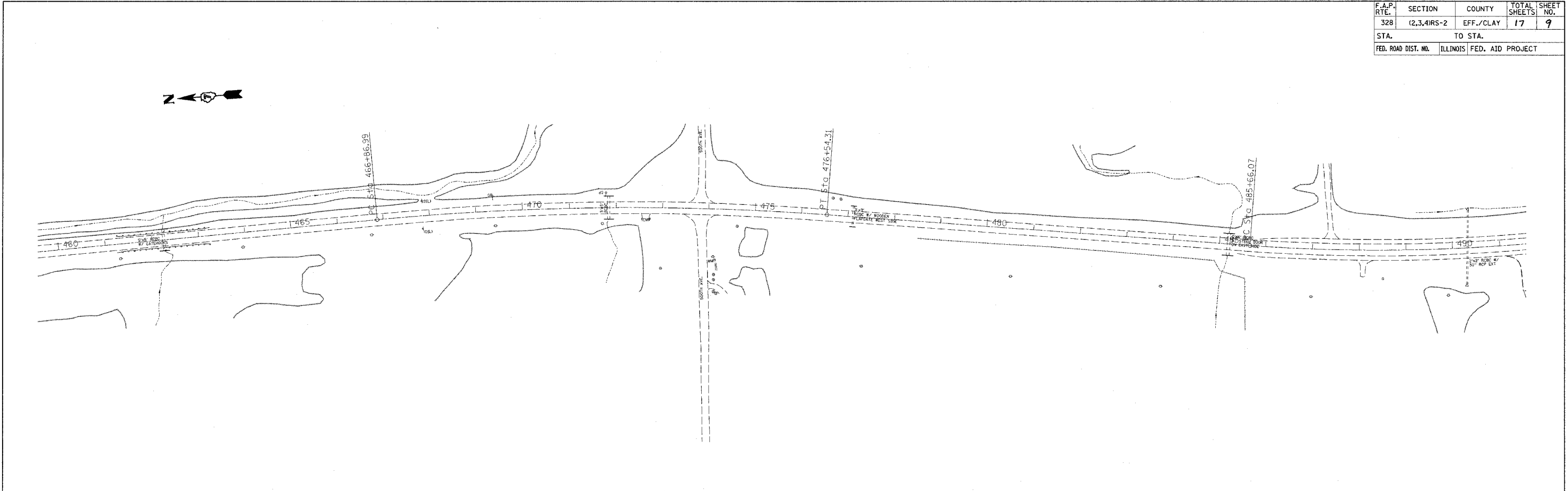
PLOT DATE = 3/25/2007
FILE NAME = c:\pco\mca\74160d\shp\plan_74160.dgn
PLOT SCALE = 1/8"=1'-0"
USER NAME = swartzm

F.A.P. RTE.	SECTION	COUNTY	TOTAL SHEETS	SHEET NO.
328	12,3,4RS-2	EFF./CLAY	17	8
STA.	TO STA.			
FED. ROAD DIST. NO.	ILLINOIS	FED. AID PROJECT		



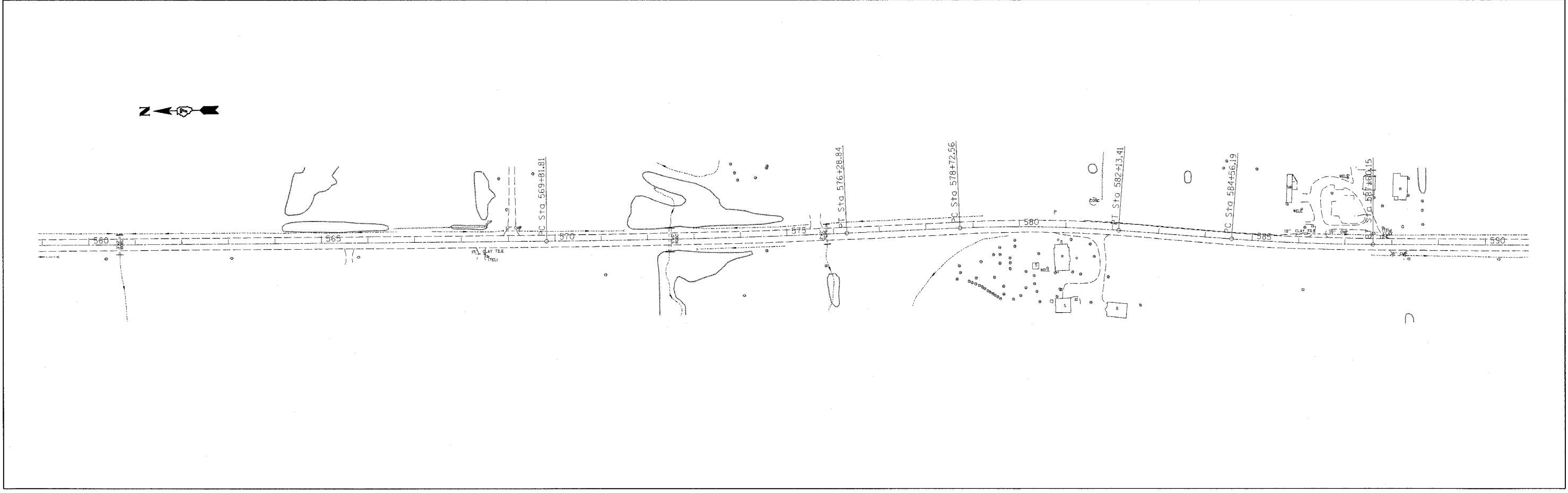
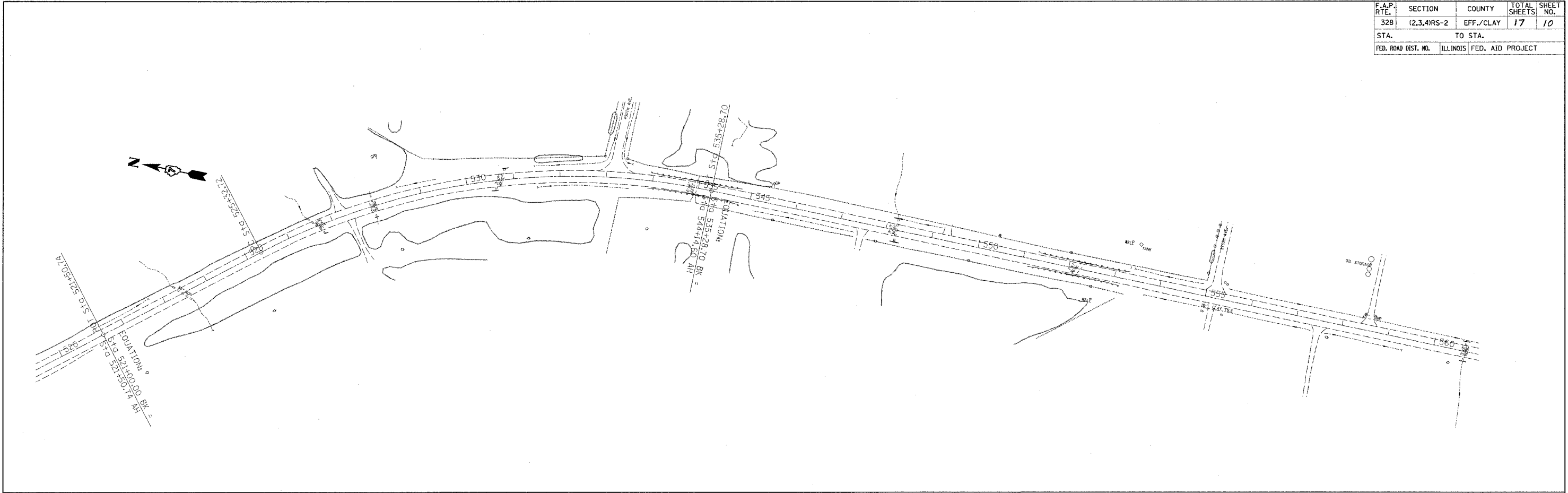
PLOT DATE = 3/29/2007
 FILE NAME = c:\projects\74160\shp\plan_74160.dgn
 USER NAME = mstanton

F.A.P. RTE.	SECTION	COUNTY	TOTAL SHEETS	SHEET NO.
328	(2,3,4)RS-2	EFF./CLAY	17	9
STA.	TO STA.			
FED. ROAD DIST. NO.	ILLINOIS	FED. AID PROJECT		



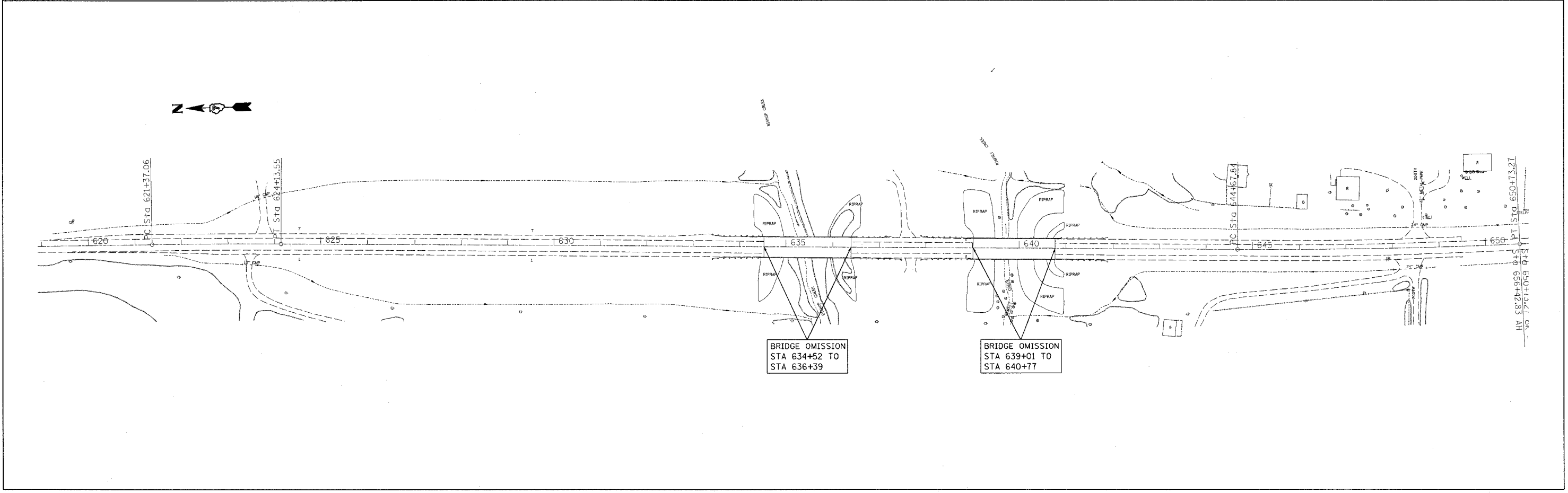
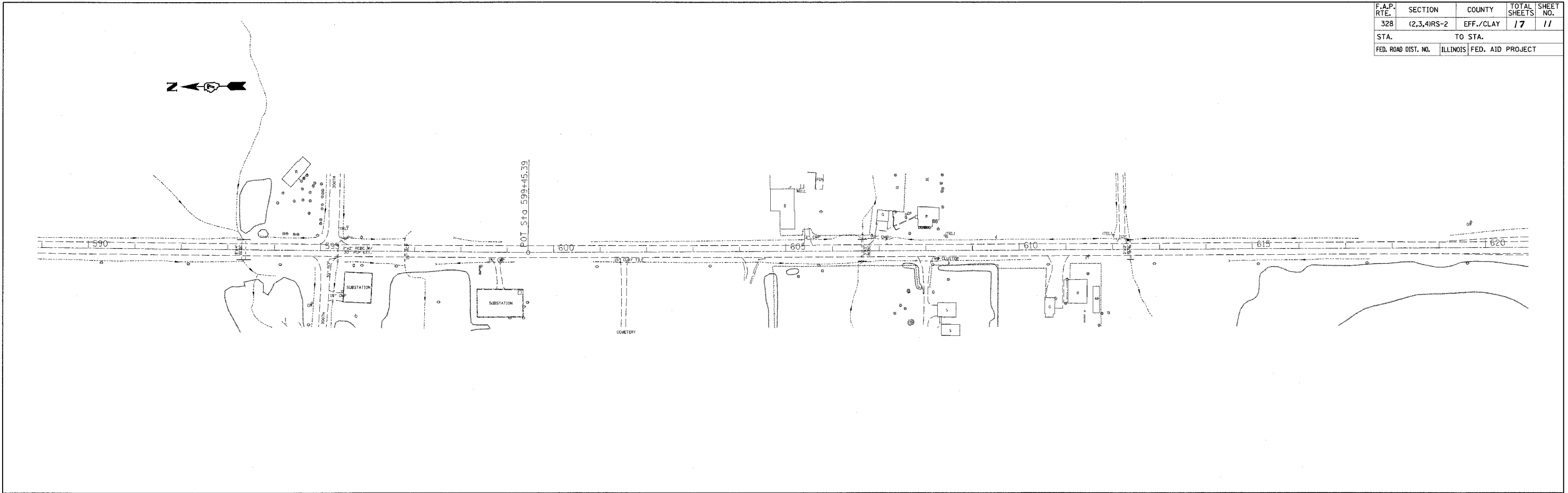
PLOT DATE = 3/29/2007
FILE NAME = c:\projects\74160\ahplan_74160.dgn
USER NAME = mwp
USER NAME = mwp

F.A.P. RTE.	SECTION	COUNTY	TOTAL SHEETS	SHEET NO.
328	(2,3,4)RS-2	EFF./CLAY	17	10
STA.		TO STA.		
FED. ROAD DIST. NO.	ILLINOIS	FED. AID PROJECT		



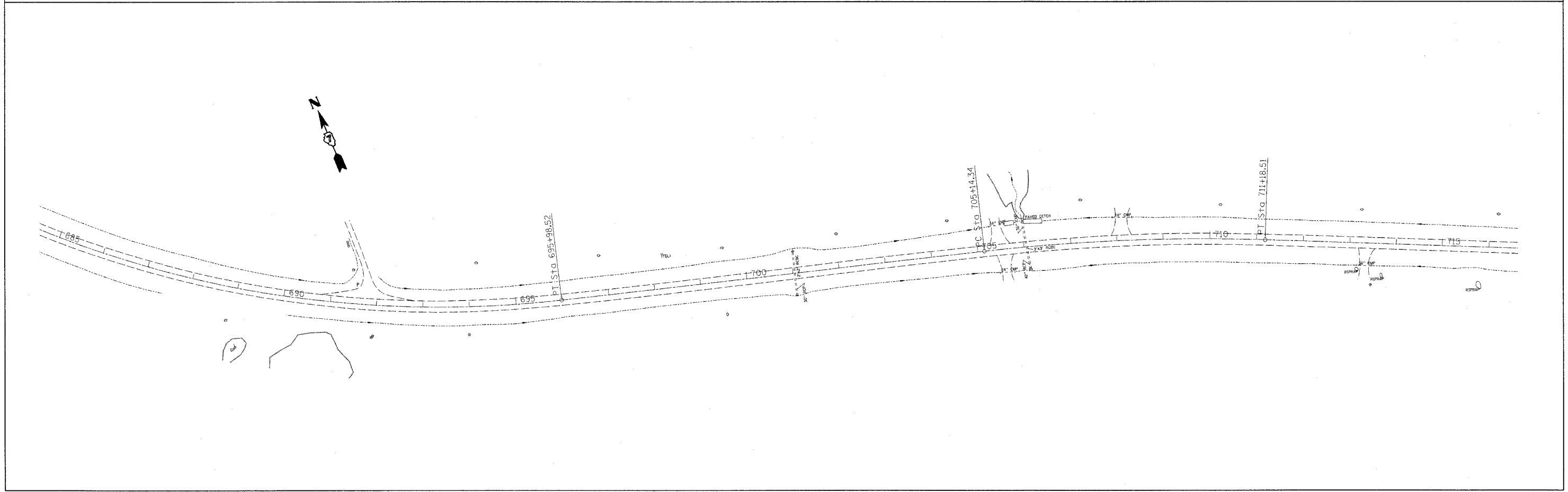
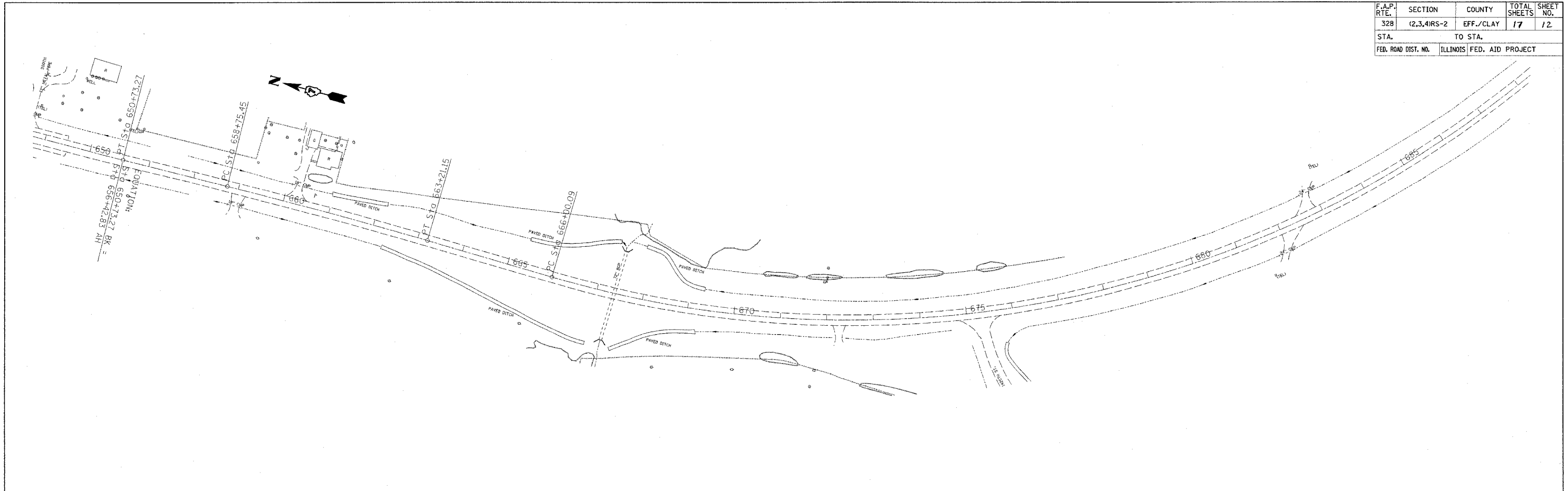
PLOT DATE = 3/25/2007
 FILE NAME = c:\projects\74160\ahplan_74160.dgn
 USER NAME = ahplan_74160

F.A.P. RTE.	SECTION	COUNTY	TOTAL SHEETS	SHEET NO.
328	(2,3,4)RS-2	EFF./CLAY	17	11
STA.		TO STA.		
FED. ROAD DIST. NO.	ILLINOIS	FED. AID PROJECT		



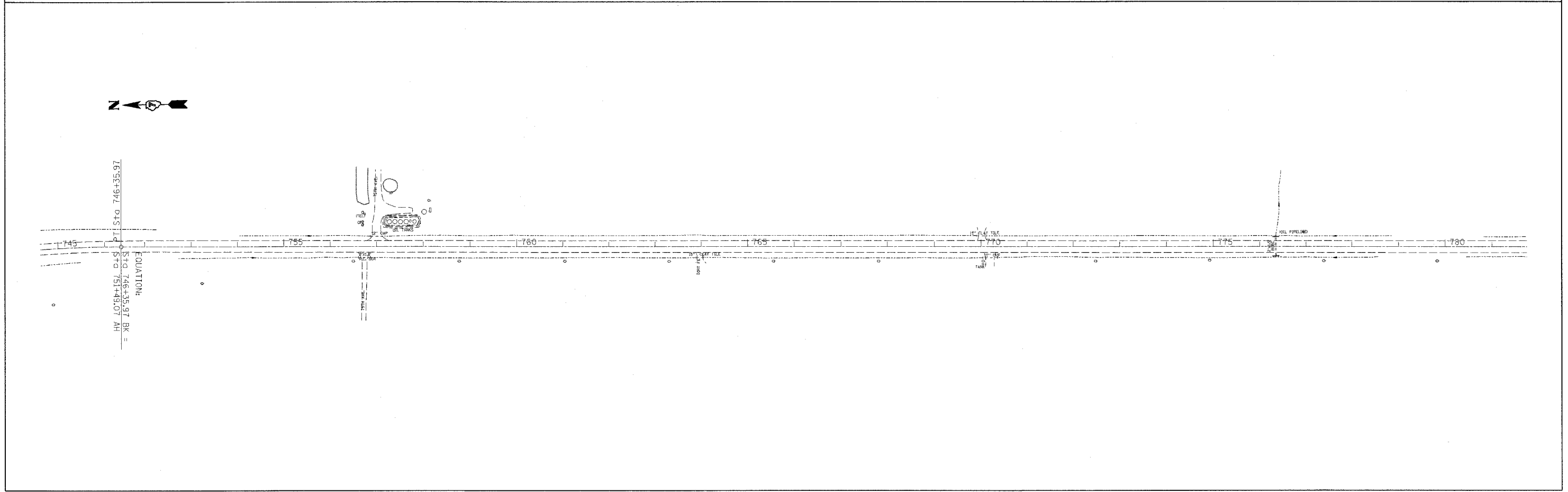
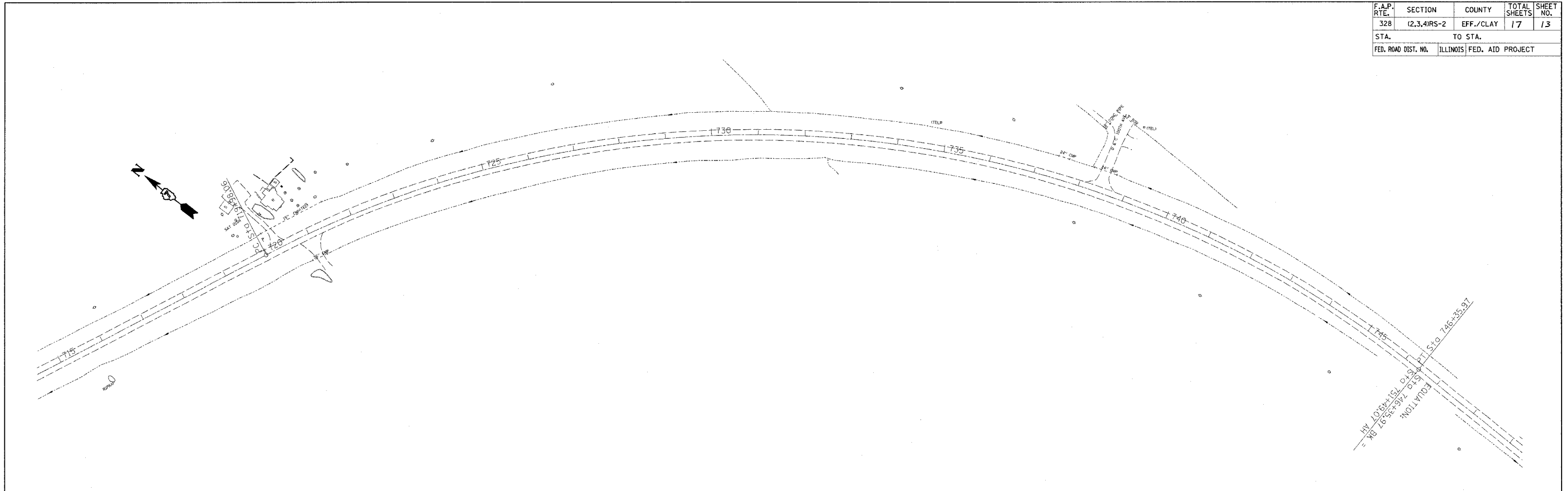
PLOT DATE = 3/23/2007
 FILE NAME = c:\projects\74160\ahplan_74160.dgn
 USER NAME = ahplan

F.A.P. RTE.	SECTION	COUNTY	TOTAL SHEETS	SHEET NO.
328	(2,3,4)RS-2	EFF./CLAY	17	12
STA.		TO STA.		
FED. ROAD DIST. NO.		ILLINOIS FED. AID PROJECT		



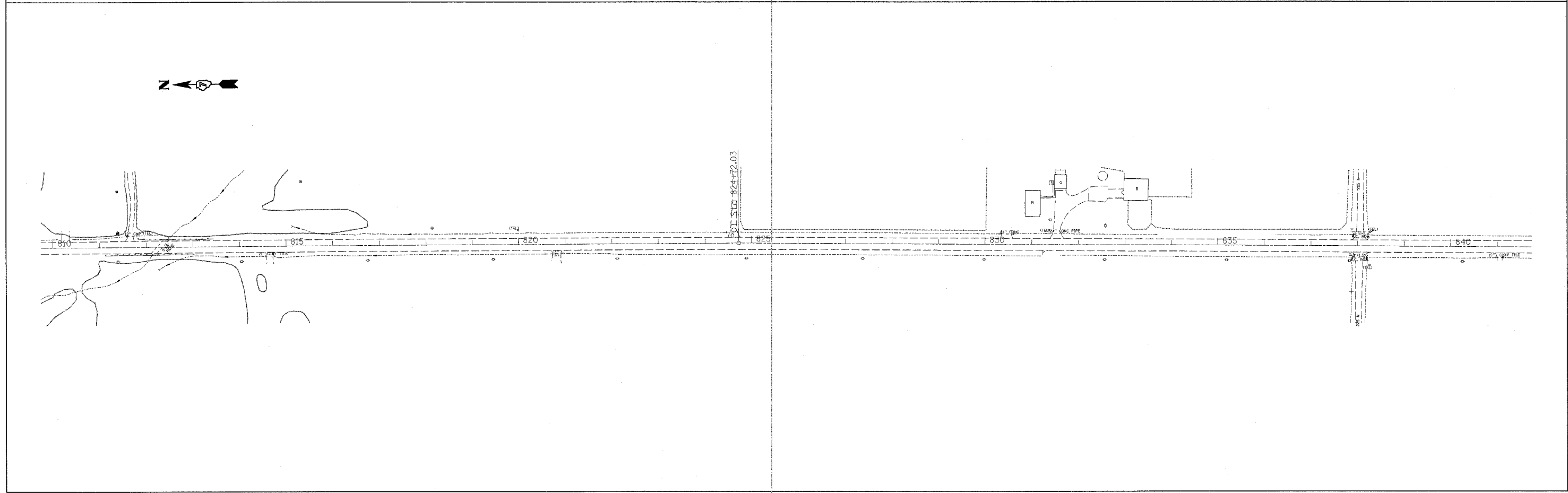
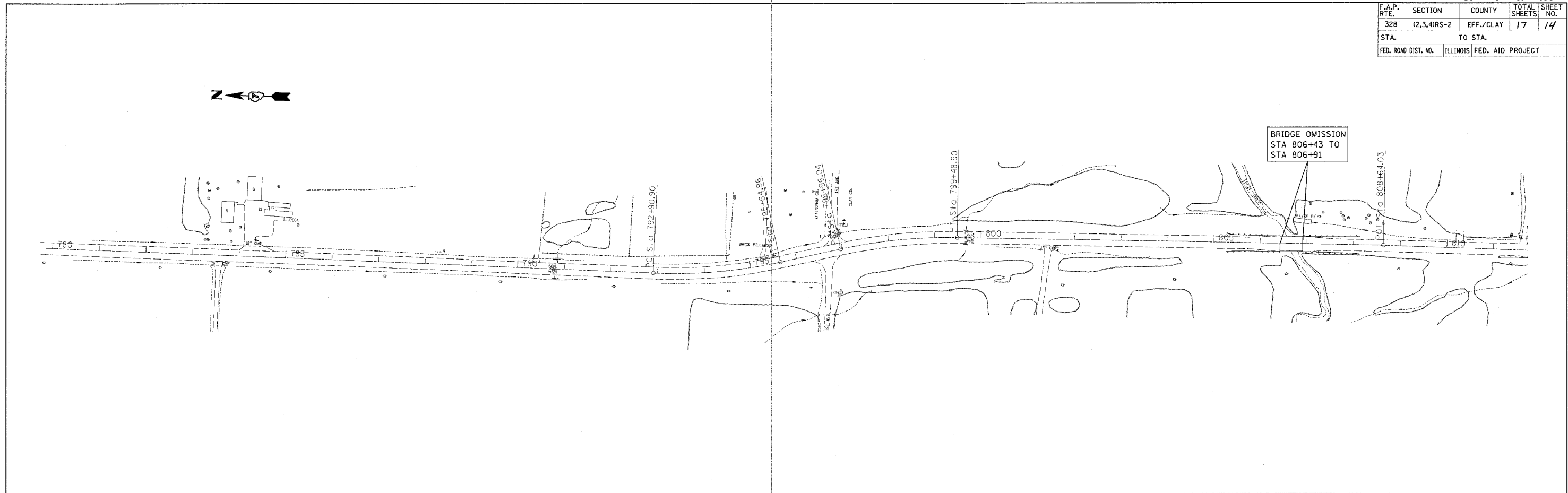
PLOT DATE = 3/29/2007
 FILE NAME = c:\prow\mets\74160\shplan_74160.dgn
 USER NAME = boertler

F.A.P. RTE.	SECTION	COUNTY	TOTAL SHEETS	SHEET NO.
328	(2,3,4)RS-2	EFF./CLAY	17	13
STA.	TO STA.			
FED. ROAD DIST. NO.	ILLINOIS	FED. AID PROJECT		



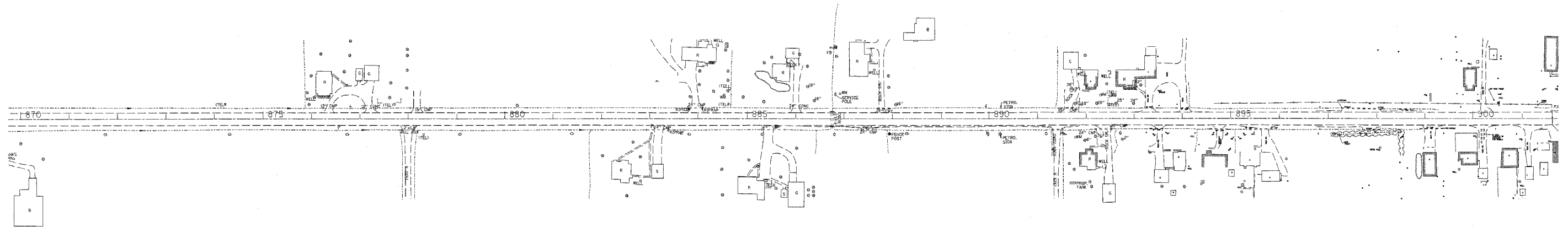
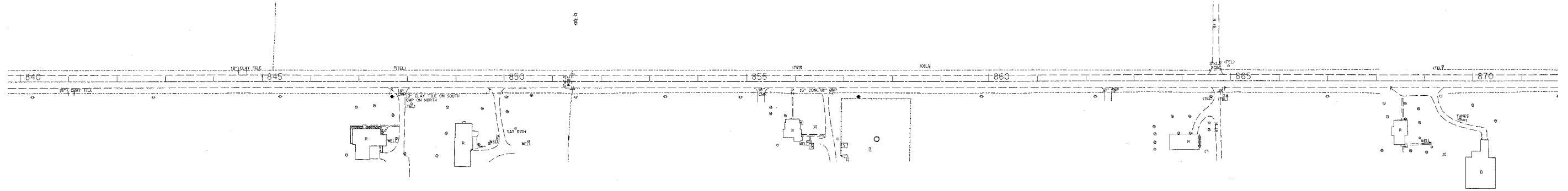
PLOT DATE = 3/29/2007
 PLOT SCALE = 1/4"=100'
 USER NAME =

F.A.P. RTE.	SECTION	COUNTY	TOTAL SHEETS	SHEET NO.
328	(2,3,4)RS-2	EFF./CLAY	17	14
STA.	TO STA.			
FED. ROAD DIST. NO.	ILLINOIS	FED. AID PROJECT		



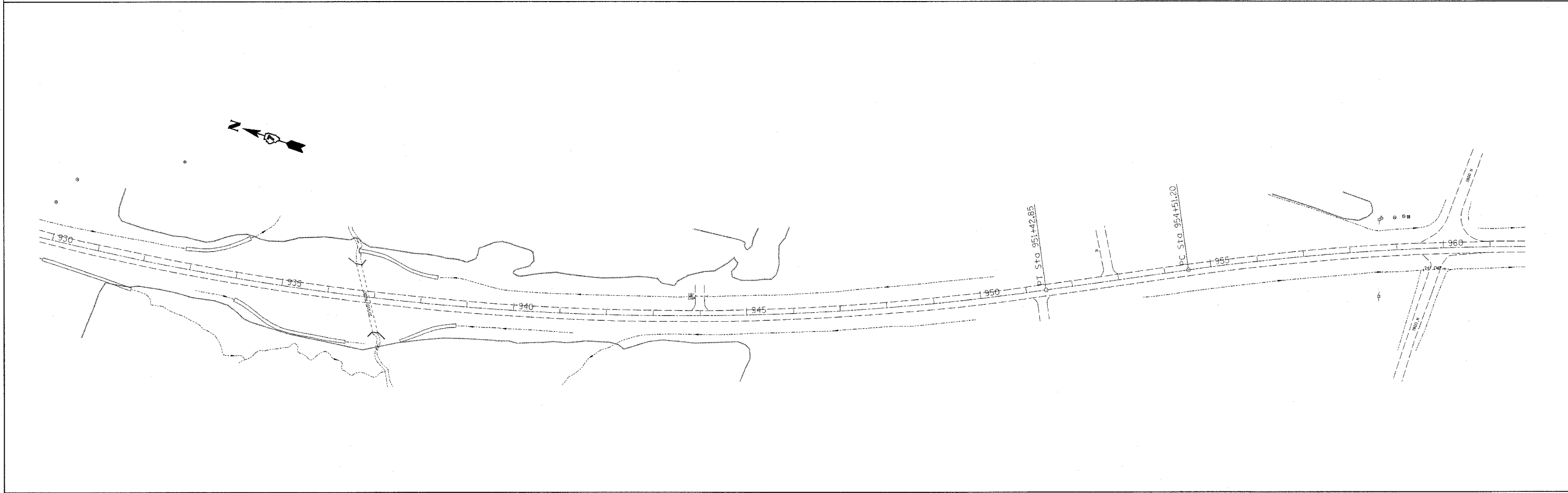
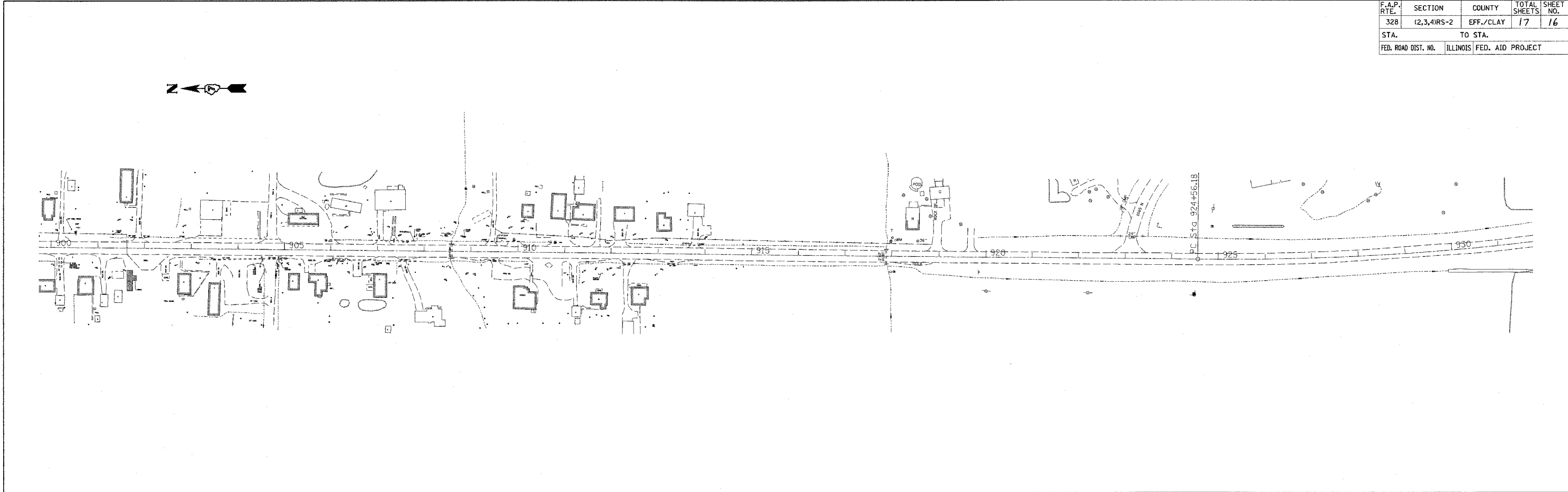
PLOT DATE = 3/29/2007
 FILE NAME = c:\projects\74160\shplan_74160.dgn
 USER NAME = hester

F.A.P. RTE.	SECTION	COUNTY	TOTAL SHEETS	SHEET NO.
328	(2,3,4)RS-2	EFF./CLAY	17	15
STA.	TO STA.			
FED. ROAD DIST. NO.	ILLINOIS	FED. AID PROJECT		



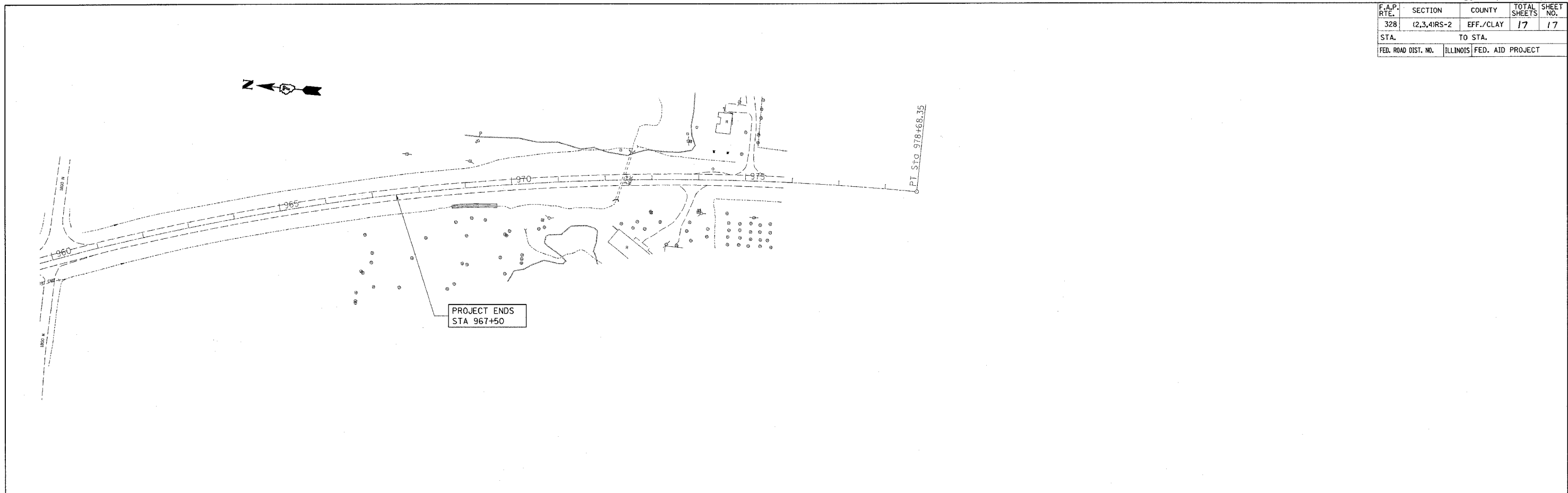
PLOT DATE = 3/29/2007
PLOT NAME = g:\projects\74160\whplan_74160.dgn
PLOT SCALE = 1/8" = 1'-0"
USER NAME = mhartley

F.A.P. RTE.	SECTION	COUNTY	TOTAL SHEETS	SHEET NO.
328	12,3,4RS-2	EFF./CLAY	17	16
STA. TO STA.		ILLINOIS FED. AID PROJECT		



PLOT DATE = 3/29/2007
 FILE NAME = c:\p\proj\74160\mpl\plan_74160.dgn
 PLOT SCALE = 100.0000 / IN.
 USER NAME = eac-trm

F.A.P. RTE.	SECTION	COUNTY	TOTAL SHEETS	SHEET NO.
328	(2,3,4)RS-2	EFF./CLAY	17	17
STA.	TO STA.			
FED. ROAD DIST. NO.	ILLINOIS	FED. AID PROJECT		



PLOT DATE = 3/29/2007
FILE NAME = c:\projects\74160\74160.dwg
USER NAME = mstrz