

F.A.S. RTE.	SECTION	COUNTY	TOTAL SHEETS	SHEET NO.
2701	(101)T	EFFINGHAM	7	1

STATE OF ILLINOIS  
DEPARTMENT OF TRANSPORTATION  
DIVISION OF HIGHWAYS

**PROPOSED  
HIGHWAY PLANS**

FAS ROUTE 2701 (ILL 37)  
SECTION (101)T

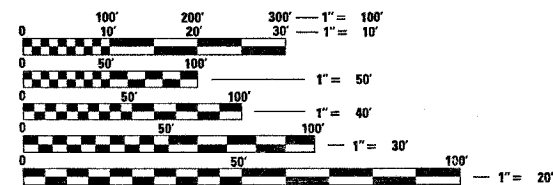
EFFINGHAM COUNTY

C-97-068-06

FOR INDEX OF SHEETS, SEE SHEET NO. 2

STA E0 = 1230+76.20BK = 1231+27.70AH

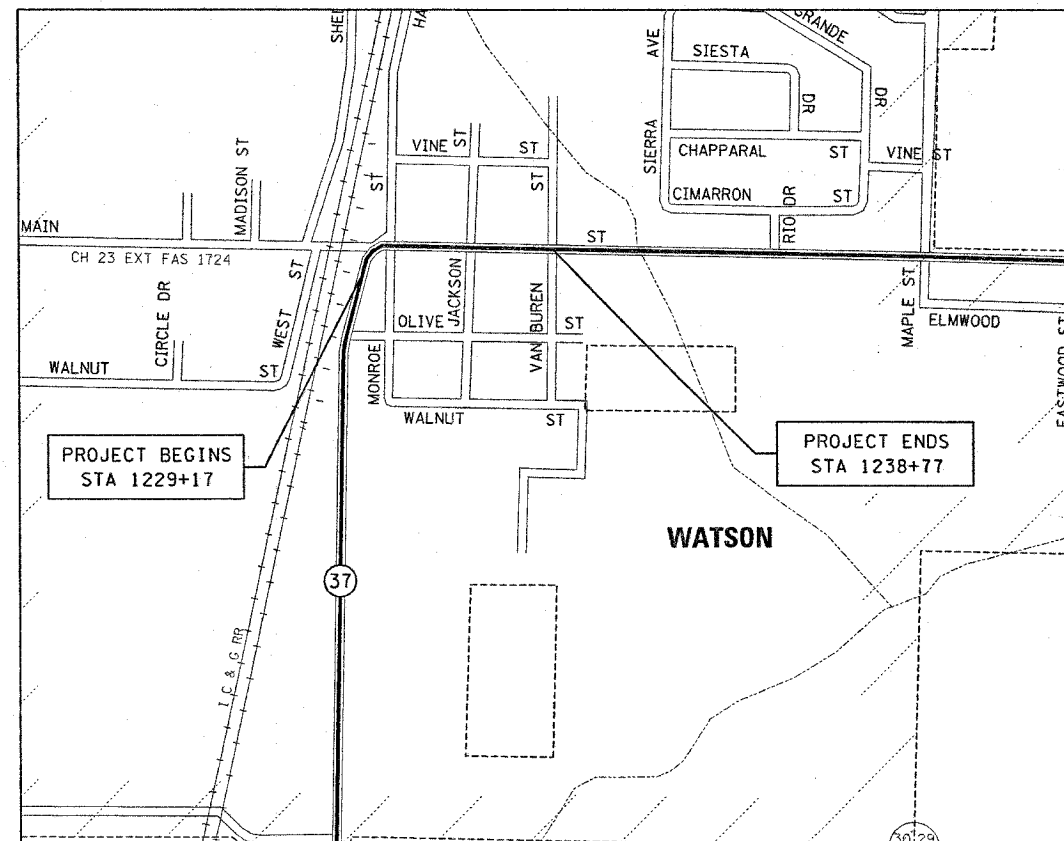
ADT = 2450 (2005) 5% TRUCKS



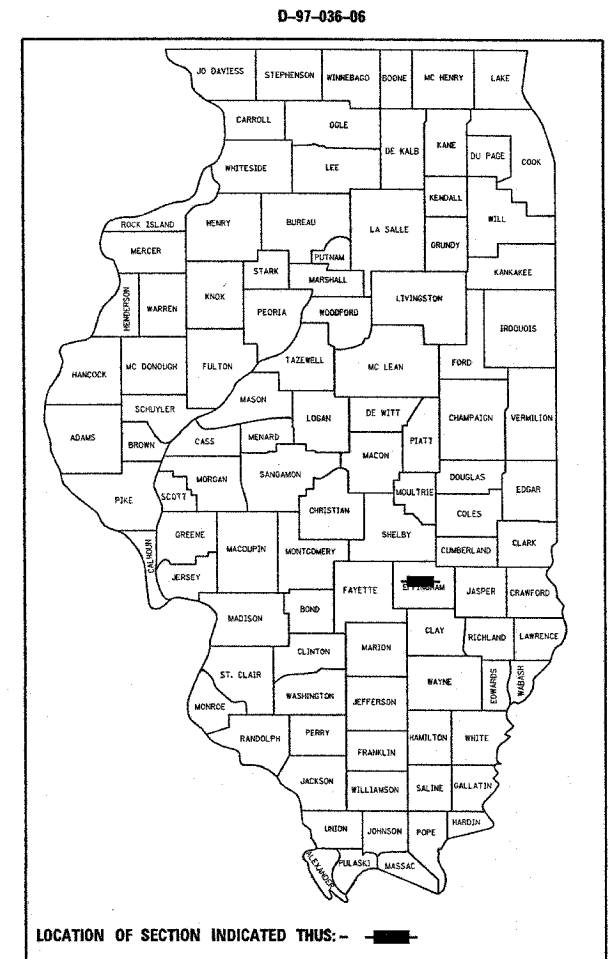
FULL SIZE PLANS HAVE BEEN PREPARED USING STANDARD ENGINEERING SCALES. REDUCED SIZED PLANS WILL NOT CONFORM TO STANDARD SCALES. IN MAKING MEASUREMENTS ON REDUCED PLANS, THE ABOVE SCALES MAY BE USED.

J.U.L.I.E.  
JOINT UTILITY LOCATION INFORMATION FOR EXCAVATION  
1-800-892-0123

CONTRACT NO. 74162



GROSS LENGTH = 908.5 FEET = 0.172 MILES  
NET LENGTH = 908.5 FEET = 0.172 MILES



STATE OF ILLINOIS  
DEPARTMENT OF TRANSPORTATION  
DIVISION OF HIGHWAYS

SUBMITTED April 5, 2007  
Christ H. Reed  
DEPUTY DIRECTOR OF HIGHWAYS, REGION ENGINEER

May 11, 2007  
Eric E. Harwood  
ENGINEER OF DESIGN AND ENVIRONMENT

May 11, 2007  
Milton R. Sees, P.E.  
DIRECTOR OF HIGHWAYS, CHIEF ENGINEER

**PRINTED BY THE AUTHORITY  
OF THE STATE OF ILLINOIS**