

| F.A.S. RTE. | SECTION | COUNTY | TOTAL SHEETS | SHEET NO. |
|-------------|---------|-----------|--------------|-----------|
| 2701 | (101)T | EFFINGHAM | 7 | 1 |

STATE OF ILLINOIS
DEPARTMENT OF TRANSPORTATION
DIVISION OF HIGHWAYS

**PROPOSED
HIGHWAY PLANS**

FAS ROUTE 2701 (ILL 37)
SECTION (101)T

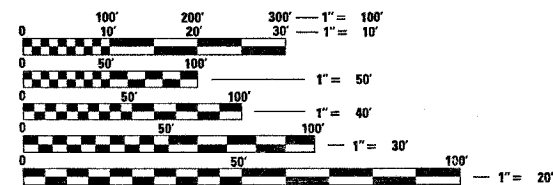
EFFINGHAM COUNTY

C-97-068-06

FOR INDEX OF SHEETS, SEE SHEET NO. 2

STA E0 = 1230+76.20BK = 1231+27.70AH

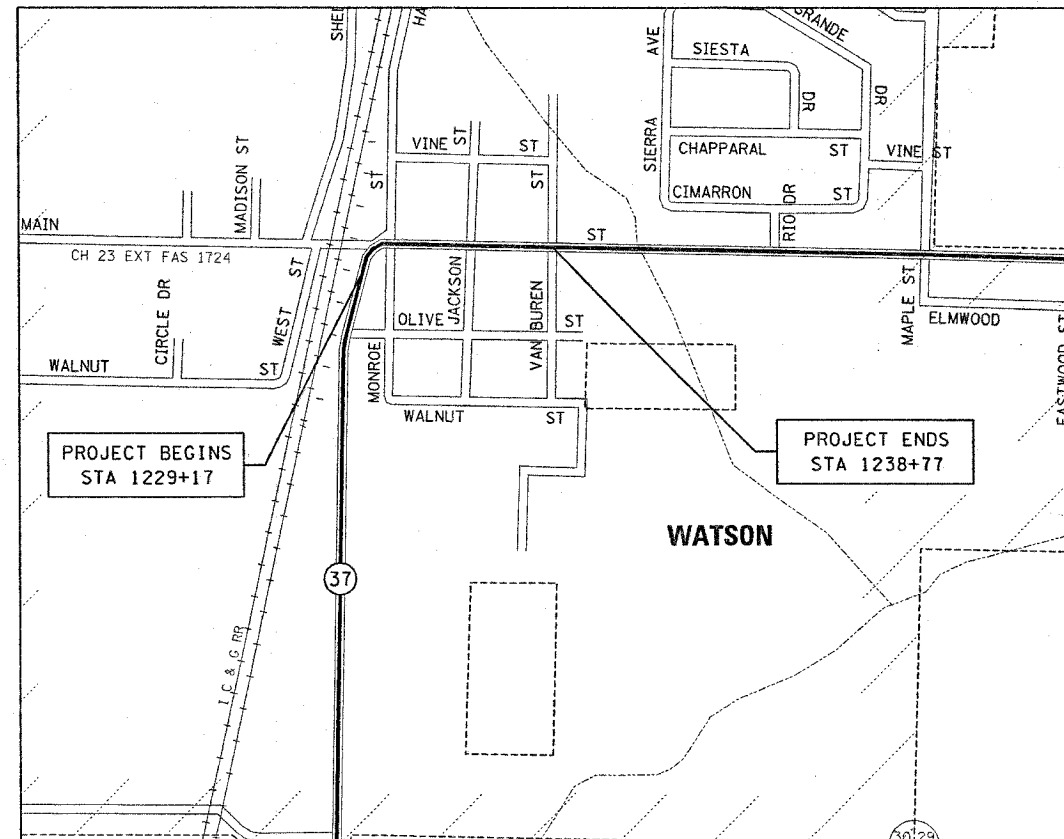
ADT = 2450 (2005) 5% TRUCKS



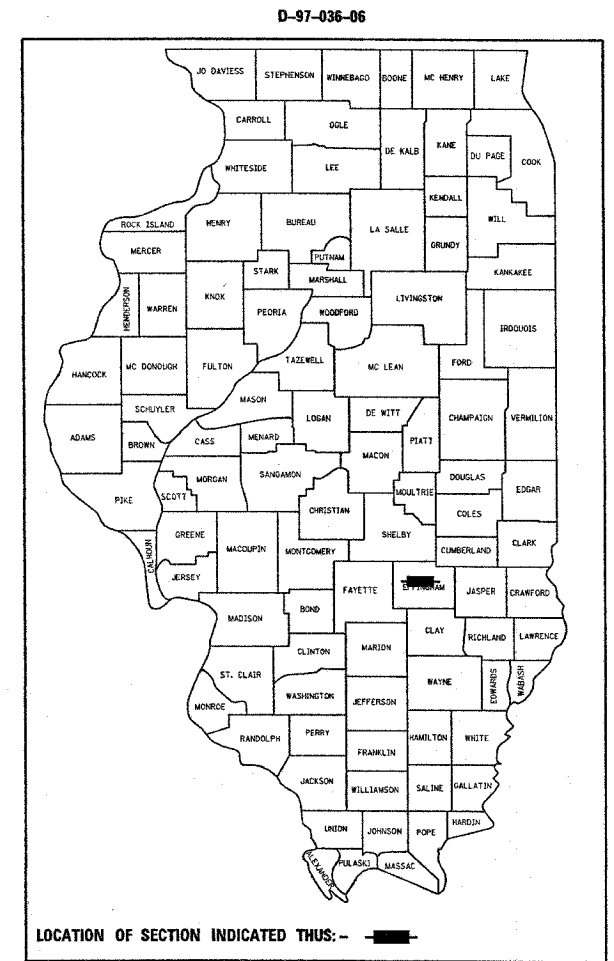
FULL SIZE PLANS HAVE BEEN PREPARED USING STANDARD ENGINEERING SCALES. REDUCED SIZED PLANS WILL NOT CONFORM TO STANDARD SCALES. IN MAKING MEASUREMENTS ON REDUCED PLANS, THE ABOVE SCALES MAY BE USED.

J.U.L.I.E.
JOINT UTILITY LOCATION INFORMATION FOR EXCAVATION
1-800-892-0123

CONTRACT NO. 74162



GROSS LENGTH = 908.5 FEET = 0.172 MILES
NET LENGTH = 908.5 FEET = 0.172 MILES



LOCATION OF SECTION INDICATED THUS: -

STATE OF ILLINOIS
DEPARTMENT OF TRANSPORTATION
DIVISION OF HIGHWAYS

SUBMITTED April 5, 2007
Christ H. Reed
DEPUTY DIRECTOR OF HIGHWAYS, REGION ENGINEER

May 11, 2007
Eric E. Harwood
ENGINEER OF DESIGN AND ENVIRONMENT

May 11, 2007
Milton R. Sees, P.E.
DIRECTOR OF HIGHWAYS, CHIEF ENGINEER

**PRINTED BY THE AUTHORITY
OF THE STATE OF ILLINOIS**

| F.A.S. RTE. | SECTION | COUNTY | TOTAL SHEETS | SHEET NO. |
|---------------------|---------|---------------------------|--------------|-----------|
| 2701 | 0101T | EFFINGHAM | 7 | 2 |
| STA. | | TO STA. | | |
| FED. ROAD DIST. NO. | | ILLINOIS FED. AID PROJECT | | |

GENERAL NOTES

THIS SECTION SHALL BE CONSTRUCTED IN ACCORDANCE WITH THE PLANS, THE "STANDARD SPECIFICATIONS FOR ROAD AND BRIDGE CONSTRUCTION", ADOPTED JANUARY 1, 2007; THE "SUPPLEMENTAL SPECIFICATIONS AND RECURRING SPECIAL PROVISIONS" INDICATED ON THE CHECK SHEET, AND "THE SPECIAL PROVISIONS" INCLUDED IN THE PROPOSAL.

THE WORK INCLUDED IN THIS SECTION CONSISTS OF REMOVAL OF APPROXIMATELY 840 LINEAL FEET OF STORM SEWER AND INSTALLATION OF 964 LINEAL FEET OF STORM SEWER AND ANY OTHER WORK NECESSARY TO COMPLETE THIS SECTION.

EXCAVATION THROUGH SIDEROADS SHALL BE INCLUDED IN THE COST OF THE STORM SEWER.

ANY CURB AND GUTTER, PAVEMENT OR SHOULDERS THAT ARE DAMAGED WHILE REMOVING AND INSTALLING STORM SEWER AND DRAINAGE STRUCTURES, SHALL BE RECONSTRUCTED AS DIRECTED BY THE ENGINEER. THIS WORK SHALL BE INCLUDED WITH THE COST OF THE STORM SEWER.

ANY FIELD TILES OR OTHER UNKNOWN SUB-SURFACE DRAINAGE STRUCTURES THAT ARE DAMAGED DURING THE INSTALLATION OF THE STORM SEWER SHALL BE REPAIRED AS DIRECTED BY THE ENGINEER. THIS WORK SHALL BE PAID FOR AS PER ARTICLE 109.04 OF THE STANDARD SPECIFICATIONS.

CONSTRUCTION AT ENTRANCES SHALL BE COORDINATED IN ORDER TO MAINTAIN ACCESS AT ALL TIMES.

THE MATERIAL USED FOR AGGREGATE SURFACE COURSE, TYPE B SHALL BE CRUSHED STONE OR CRUSHED CONCRETE.

ALL AREAS DISTURBED DURING CONSTRUCTION SHALL BE SEEDED WITH CLASS 2 SEEDING ACCORDING TO SECTION 250 OF THE STANDARD SPECIFICATIONS AND THE SPECIAL PROVISIONS. THE COST SHALL BE INCLUDED IN THE COST OF THE STORM SEWER.

THE CONTRACTOR SHALL PROVIDE INTERNET ACCESS TO THE BITUMINOUS PLANT QUALITY CONTROL LAB SO THAT BITUMINOUS PLANT REPORTS CAN BE E-MAILED TO THE DISTRICT HEADQUARTERS. THIS WORK SHALL BE INCLUDED IN THE COST OF THE BITUMINOUS ITEM.

THE LOCATIONS AND /OR DPETHS OF UNDERGROUND UTILITIES SHOWN HAVE BEEN TAKEN FROM INFORMATION FURNISHED BY THE UTILITY OWNERS AND MUST BE CONSIDERED APPROXIMATE. FIELD MARKINGS OF FACILITIES IN CRITICAL AREAS MAY BE OBTAINED BY PROVIDING A MINIMUM OF 96 HOURS ADVANCE NOTICE THROUGH THE J.U.L.I.E. SYSTEM BY CALLING 800-892-0123.

THE FOLLOWING MIXTURE REQUIREMENTS ARE APPLICABLE TO THIS PROJECT:

MIXTURE USE(S): INCIDENTAL BITUMINOUS SURFACE (DRIVEWAYS)
 AC/PG: PG 64-22
 RAP% (MAX): 15% MAX.
 DESIGN AIR VOIDS: 4.0% @ NDESIGN = 50
 MIXTURE COMPOSITION: 1L-9.5
 (GRADATION MIXTURE)
 FRICTION AGGREGATE: MIXTURE C

FACTOR: 112 LB/IN/50 YD

INDEX OF SHEETS

| SHEET NO. | TITLE |
|-----------|---|
| 1 | COVER SHEET |
| 2 | GENERAL NOTES, INDEX OF SHEETS & LISTS OF STANDARDS & BENCHMARK INFORMATION |
| 3 | SUMMARY OF QUANTITIES |
| 4 | SCHEDULE |
| 5-6 | PLAN AND PROFILE SHEETS |
| 7 | STORM SEWER OVERVIEW |

THE FOLLOWING STANDARDS ARE A PART OF THESE PLANS AND ARE INCLUDED AFTER SHEET NO. 7:

- 000001-04 STANDARD SYMBOLS, ABBREVIATIONS AND PATTERNS
- 001001-01 AREAS OR REINFORCEMENT BARS
- 001006 DECIMAL OF AN INCH AND OF A FOOT
- 280001-03 TEMPORARY EROSION CONTROL SYSTEMS
- 542301-01 PRECAST REINFORCED CONCRETE FLARED END SECTION
- 602301-01 INLET TYPE A
- 602306-01 INLET TYPE B
- 602401-01 MANHOLE, TYPE A
- 602601-01 PRECAST REINFORCED CONCRETE FLAT SLAB TOP
- 602701-01 MANHOLE STEPS
- 604006-02 FRAME AND GRATE, TYPE 3
- 604021-01 BASE, FRAME AND LIDS TYPE 5
- 604036-01 GRATE, TYPE 8
- 606001-03 CONCRETE CURB TYPE B AND COMBINATION CONCRETE CURB AND GUTTER
- 701006-02 OFF ROAD OPERATIONS, 2L, 2W, 15' TO 24" FROM PAVEMENT EDGE
- 701501-03 URBAN LANE CLOSURE, 2L, 2W UNDIVIDED
- 702001-06 TRAFFIC CONTROL DEVICES

BENCHMARK INFORMATION

BM1

CHISELED "X" ON TOP OF SW BOLT, BASE OF WEST LEG "FAST STOP" GAS STATION SIGN.
 ± STA 1229+20, 37.5' RT. ASSUMED ELEV. 100.432

PLOT DATE = #DATE#
 PLOT SCALE = #SCALE#
 USER NAME = #USER#

| REVISIONS | |
|-----------|------|
| NAME | DATE |
| | |
| | |
| | |
| | |
| | |
| | |
| | |
| | |
| | |
| | |

ILLINOIS DEPARTMENT OF TRANSPORTATION

**GENERAL NOTES
&
INDEX OF SHEETS**

SCALE: VERT. HORIZ.
DATE

DRAWN BY
CHECKED BY

| | | | | |
|---------------------|---------|---------------------------|--------------|-----------|
| F.A.S. RTE. | SECTION | COUNTY | TOTAL SHEETS | SHEET NO. |
| 2701 | 1101T | EFFINGHAM | 7 | 3 |
| STA. | | TO STA. | | |
| FED. ROAD DIST. NO. | | ILLINOIS FED. AID PROJECT | | |

SUMMARY OF QUANTITIES

| SUMMARY OF QUANTITIES | | | TOTAL QUANTITIES | CONSTRUCTION TYPE CODE | | |
|-----------------------|---|--------|------------------|------------------------|--|--|
| CODE NO | ITEM | UNIT | | Y007 100% STATE | | |
| 20800150 | TRENCH BACKFILL | CU YD | 516 | 516 | | |
| 40200800 | AGGREGATE SURFACE COURSE, TYPE B | TON | 50 | 50 | | |
| 40800050 | INCIDENTAL HOT-MIX ASPHALT SURFACING | TON | 30 | 30 | | |
| 42300200 | PORTLAND CEMENT CONCRETE DRIVEWAY PAVEMENT, 6 INCH | SQ YD | 10 | 10 | | |
| 44000200 | DRIVEWAY PAVEMENT REMOVAL | SQ YD | 10 | 10 | | |
| 50105220 | PIPE CULVERT REMOVAL | FOOT | 31 | 31 | | |
| 54213669 | PRECAST REINFORCED CONCRETE FLARED END SECTIONS 24" | EACH | 1 | 1 | | |
| 550A0070 | STORM SEWERS, CLASS A, TYPE 1 15" | FOOT | 169 | 169 | | |
| 550A0120 | STORM SEWERS, CLASS A, TYPE 1 24" | FOOT | 799 | 799 | | |
| 55100700 | STORM SEWER REMOVAL 15" | FOOT | 840 | 840 | | |
| 60218500 | MANHOLES, TYPE A, 4'-DIAMETER, TYPE 3 FRAME AND GRATE | EACH | 1 | 1 | | |
| 60219000 | MANHOLES, TYPE A, 4'-DIAMETER, TYPE 8 GRATE | EACH | 5 | 5 | | |
| 60221700 | MANHOLES, TYPE A, 5'-DIAMETER, TYPE 8 GRATE | EACH | 1 | 1 | | |
| 60235900 | INLETS, TYPE A, TYPE 5 FRAME, OPEN LID | EACH | 1 | 1 | | |
| 60500060 | REMOVING INLETS | EACH | 2 | 2 | | |
| 60500080 | REMOVING CATCH BASINS TO MAINTAIN FLOW | EACH | 2 | 2 | | |
| 67000500 | ENGINEER'S FIELD OFFICE, TYPE B | CAL MO | 2 | 2 | | |
| 67100100 | MOBILIZATION | L SUM | 1 | 1 | | |
| 70102620 | TRAFFIC CONTROL AND PROTECTION, STANDARD 701501 | L SUM | 1 | 1 | | |

PLOT DATE = #DATE#
 FILE NAME = #FILE#
 PLOT SCALE = #SCALE#
 USER NAME = #USER#

| REVISIONS | |
|-----------|------|
| NAME | DATE |
| | |
| | |
| | |
| | |
| | |
| | |
| | |
| | |
| | |
| | |

ILLINOIS DEPARTMENT OF TRANSPORTATION

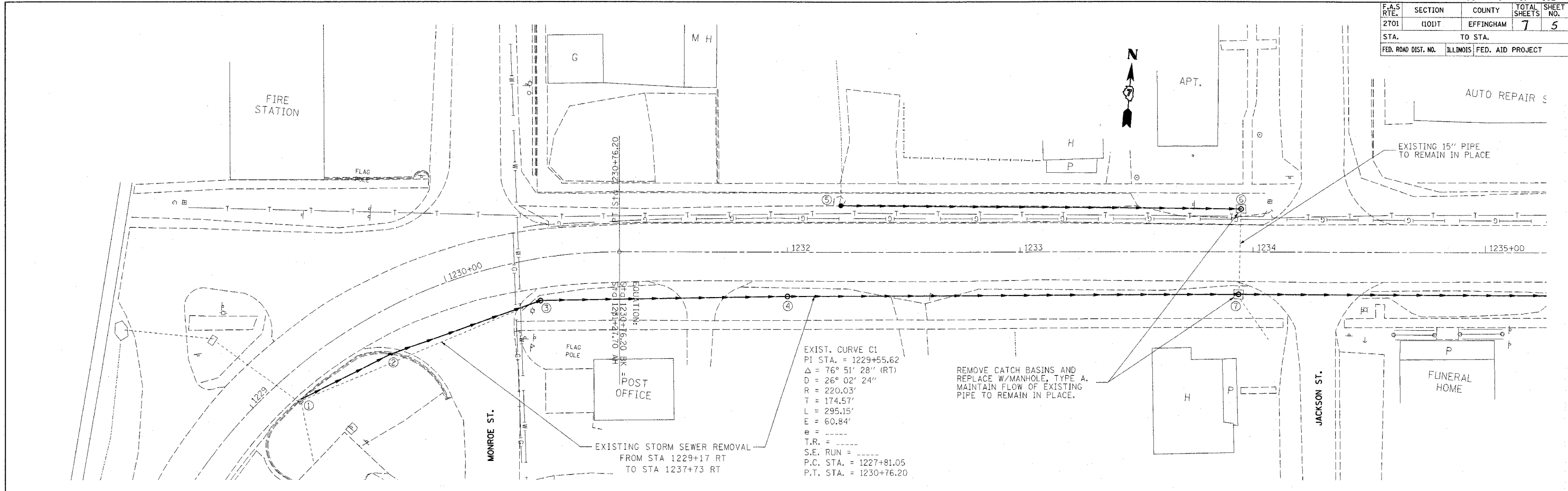
SUMMARY OF QUANTITIES

SCALE: VERT.
 HORIZ.
 DATE

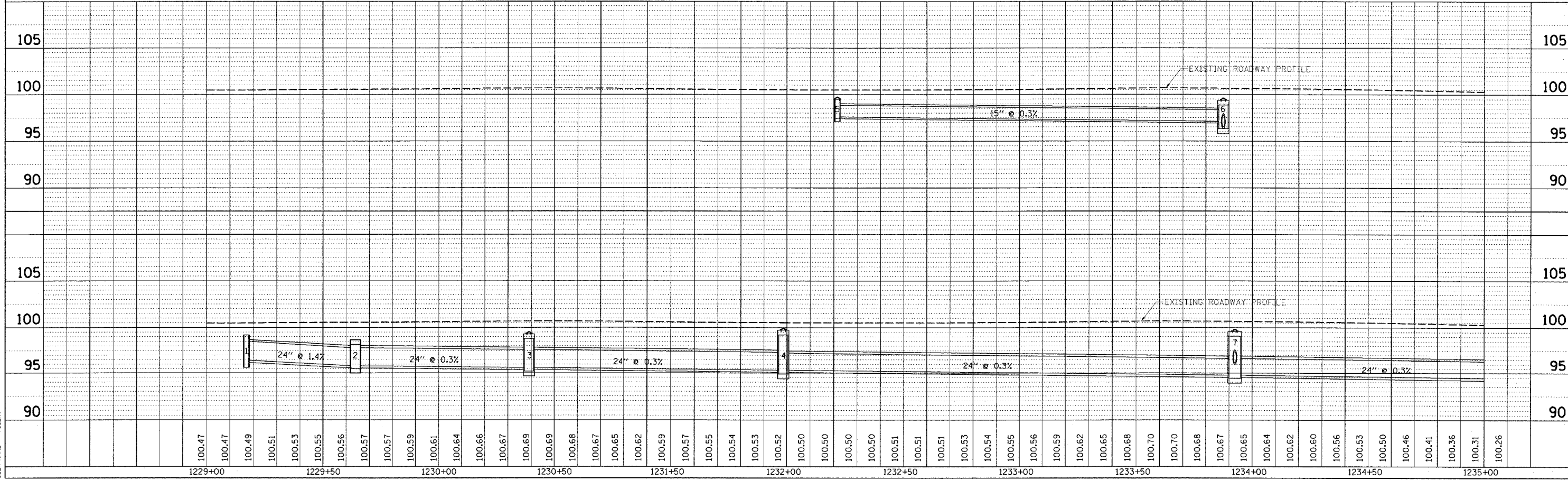
DRAWN BY
 CHECKED BY

| F.A.S. RTE. | SECTION | COUNTY | TOTAL SHEETS | SHEET NO. |
|---------------------|---------|---------------------------|--------------|-----------|
| 2701 | 10117 | EFFINGHAM | 7 | 5 |
| STA. TO STA. | | TO STA. | | |
| FED. ROAD DIST. NO. | | ILLINOIS FED. AID PROJECT | | |

| | | | |
|------|--------------------|----|------|
| PLAN | SURVEYED | BY | DATE |
| | PLOTTED | | |
| | CHECKED | | |
| | FILED | | |
| | NO. OF WAY CHECKED | | |
| | CAD FILE NAME | | |



| | | | |
|---------|----------------------------|----|------|
| PROFILE | SURVEYED | BY | DATE |
| | PLOTTED | | |
| | CHECKED | | |
| | FILED | | |
| | NO. OF WAY CHECKED | | |
| | STRUCTURE NOTATIONS - DMSD | | |

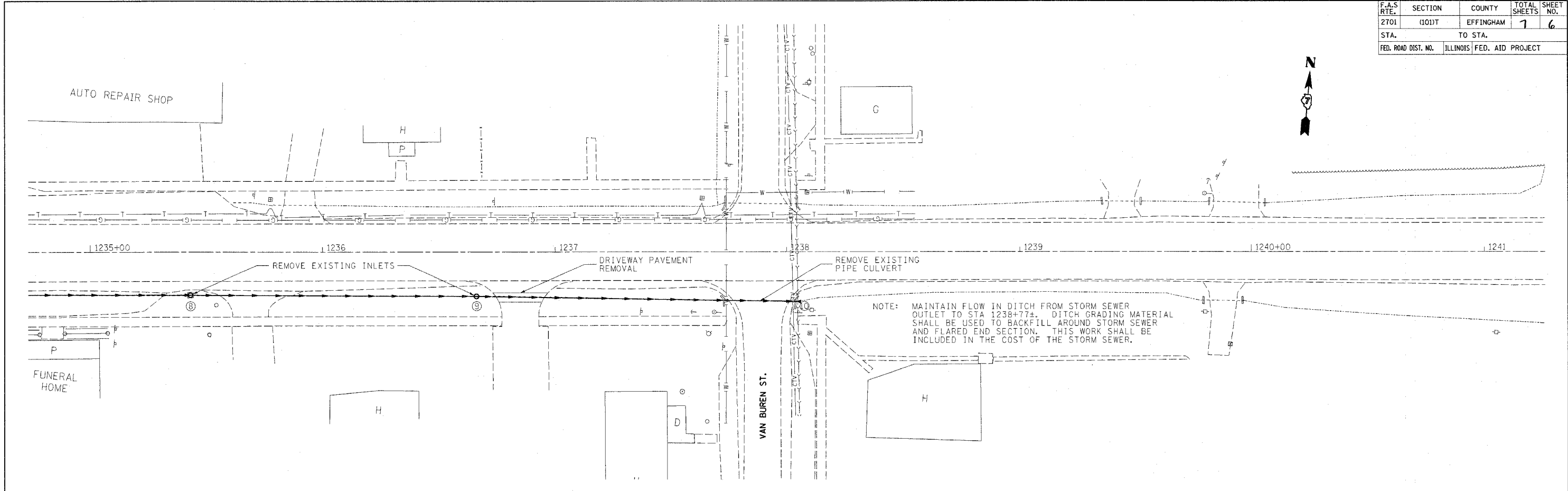


PLOT DATE = 00/00/00
 FILE NAME = 00/00/00
 PLOT SCALE = 0.5"=1'-0"
 USER NAME = 00/00/00

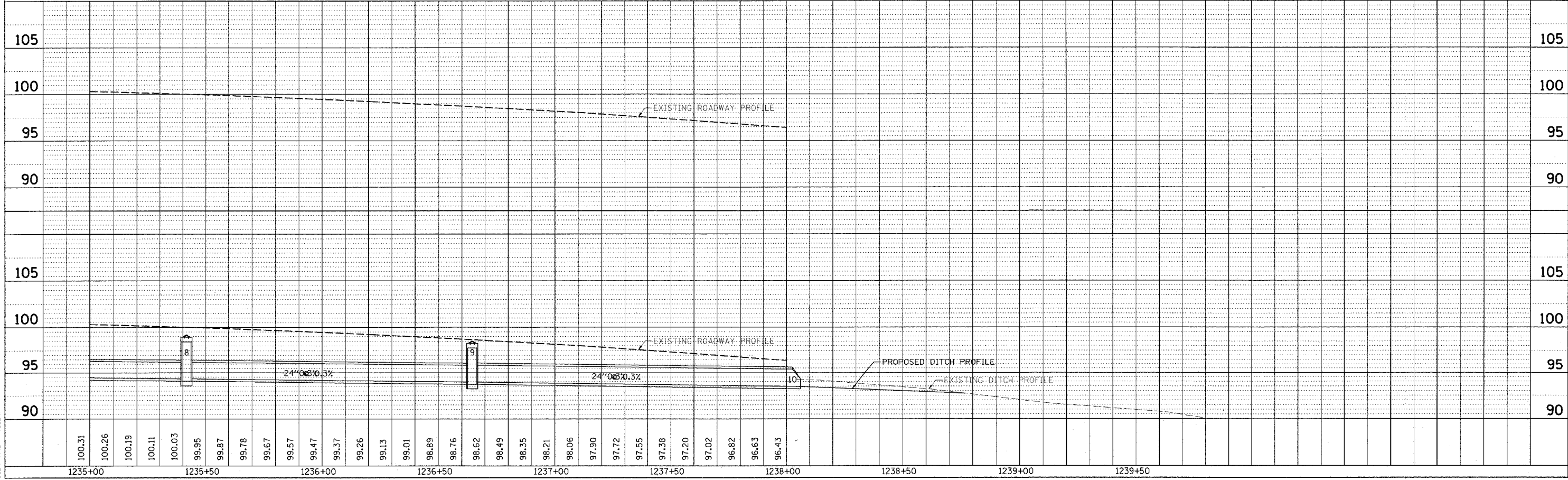
| F.A.S. RTE. | SECTION | COUNTY | TOTAL SHEETS | SHEET NO. |
|--------------|---------|---|--------------|-----------|
| 2701 | (101)T | EFFINGHAM | 7 | 6 |
| STA. TO STA. | | FED. ROAD DIST. NO. ILLINOIS FED. AID PROJECT | | |



| | |
|------|------|
| PLAN | DATE |
| BY | |
| NO. | |
| NO. | |
| NO. | |
| NO. | |

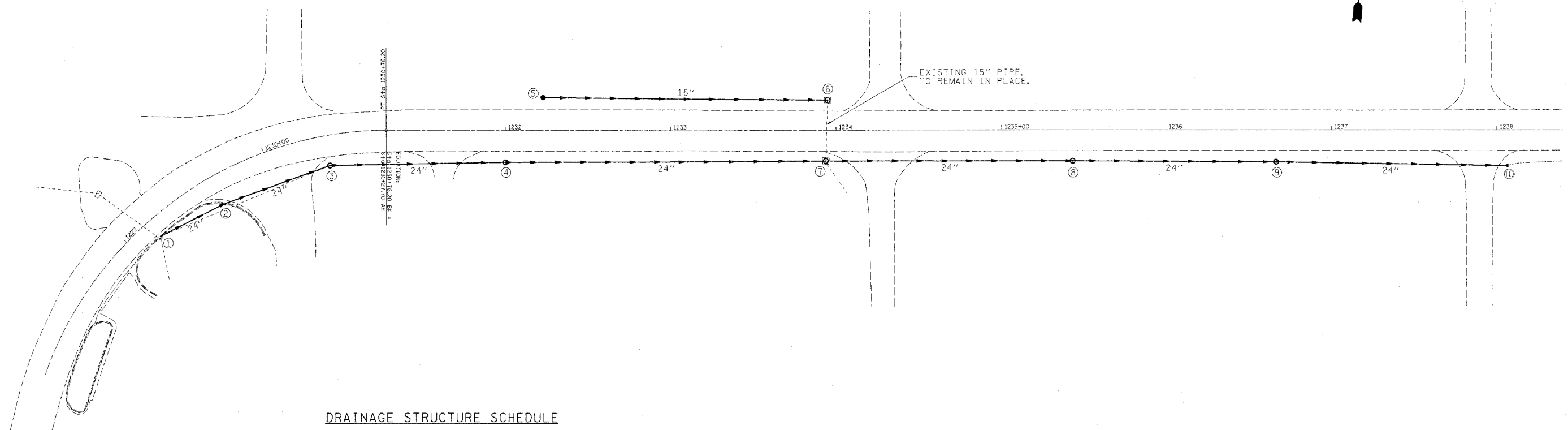


| | |
|---------|------|
| PROFILE | DATE |
| BY | |
| NO. | |
| NO. | |
| NO. | |



PLOT DATE = #DAYS
 FILE NAME = #FILE#
 PLOT SCALE = #SCALE#
 USER NAME = #USER#

| | | | | |
|---------------------|----------|------------------|--------------|-----------|
| F.A.S. RTE. | SECTION | COUNTY | TOTAL SHEETS | SHEET NO. |
| 2701 | (101)T | EFFINGHAM | 7 | 7 |
| STA. | TO STA. | | | |
| FED. ROAD DIST. NO. | ILLINOIS | FED. AID PROJECT | | |



DRAINAGE STRUCTURE SCHEDULE

| POINT | LOCATION STATION | OFFSET | DESCRIPTION | LID/GRATE ELEVATION | INLET INVERT | INLET INVERT | OUTLET INVERT |
|-------|------------------|----------|--|---------------------|--------------|--------------|---------------|
| 1 | 1229+17 | 12.6' RT | EXISTING CATCH BASIN TO REMAIN IN PLACE | 99.881 | ----- | ----- | *96.400 E |
| 2 | 1229+64 | 18.0' RT | MH TY A 4' TY 3 FRAME & GRATE | 99.500 | ----- | 95.818 W | 95.818 E |
| 3 | 1230+39 | 18.0' RT | MH TY A 4' W/ FLAT SLAB TOP & TY 8 GRATE | 99.430 | ----- | 95.624 W | 95.624 E |
| 4 | 1232+00 | 19.0' RT | MH TY A 4' W/ FLAT SLAB TOP & TY 8 GRATE | 99.740 | ----- | 95.317 W | 95.317 E |
| 5 | 1232+23 | 20.0' LT | INLET TY A TY 5 FRAME, OPEN LID | 99.600 | ----- | ----- | 96.951 E |
| 6 | 1233+95 | 18.5' LT | MH TY A 4' W/ FLAT SLAB TOP & TY 8 GRATE | 99.361 | ----- | 96.444 E | *96.390 S |
| 7 | 1233+94 | 18.0' RT | MH TY A 5' W/ FLAT SLAB TOP & TY 8 GRATE | 99.710 | *96.063 N | 94.747 W | 94.747 E |
| 8 | 1235+43 | 18.5' RT | MH TY A 4' W/ FLAT SLAB TOP & TY 8 GRATE | 98.378 | ----- | 94.311 W | 94.311 E |
| 9 | 1236+66 | 19.0' RT | MH TY A 4' W/ FLAT SLAB TOP & TY 8 GRATE | 97.821 | ----- | 93.954 W | 93.954 E |
| 10 | 1238+04 | 12.5' RT | PRECAST REINFORCED CONCRETE END SECTION | ----- | ----- | ----- | 93.544 E |

* THESE ELEVATIONS ARE EXISTING AND WILL REMAIN AT THIS ELEVATION.

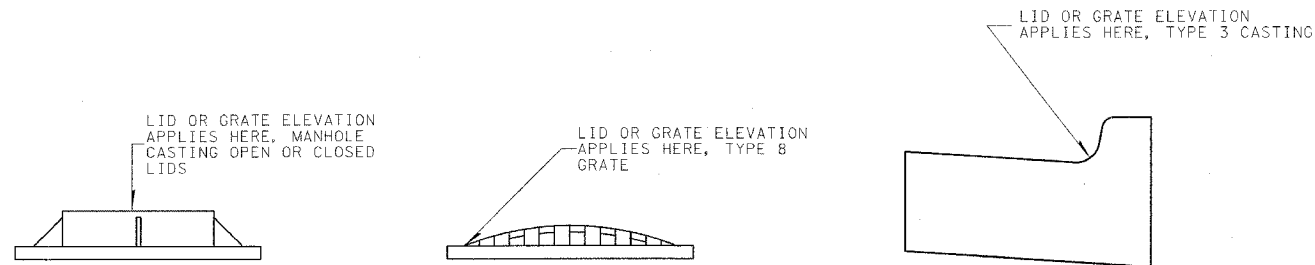
THE STATION AND OFFSET FOR FRAME AND GRATE TYPE 3 IS GIVEN FOR THE CENTER OF THE GRATE (NOT THE CENTER OF THE MANHOLE). THE ELEVATION FOR THE FRAME AND GRATE TYPE 3 IS THE EDGE OF GRATE ELEVATION

THE ELEVATION FOR THE TYPE 5 FRAME AND LID IS ON THE LID.

THE STATION AND OFFSET FOR TYPE 8 GRATES IS THE CENTER OF THE MANHOLE (NOT THE CENTER OF THE GRATE OR LID). THE ELEVATION FOR TYPE 8 GRATES IS THE HORIZONTAL RIM OF THE CASTING.

STORM SEWER SCHEDULE

| STRUCTURE TO STRUCTURE | STORM SEWER CLASS A TYPE 1 15" | STORM SEWER CLASS A TYPE 1 24" | TRENCH BACKFILL |
|------------------------|--------------------------------|--------------------------------|-----------------|
| | FOOT | FOOT | CU YD |
| 1 - 2 | | 41.6 | 14.2 |
| 2 - 3 | | 64.6 | 24.9 |
| 3 - 4 | | 102.5 | 65.3 |
| 4 - 7 | | 189.7 | 44.7 |
| 5 - 6 | 168.9 | | 142.2 |
| 7 - 8 | | 145.3 | 98.2 |
| 8 - 9 | | 119.1 | 88.2 |
| 9 - 10 | | 136.5 | 37.7 |
| TOTAL | 169 | 799 | 516 |



PLOT DATE = 04/20/10
 FILE NAME = 04/20/10
 USER NAME = 04/20/10

| REVISIONS | |
|-----------|------|
| NAME | DATE |
| | |
| | |
| | |
| | |
| | |
| | |
| | |
| | |
| | |

ILLINOIS DEPARTMENT OF TRANSPORTATION

STORM SEWER OVERVIEW

SCALE: VERT. HORIZ.
 DATE

DRAWN BY
 CHECKED BY