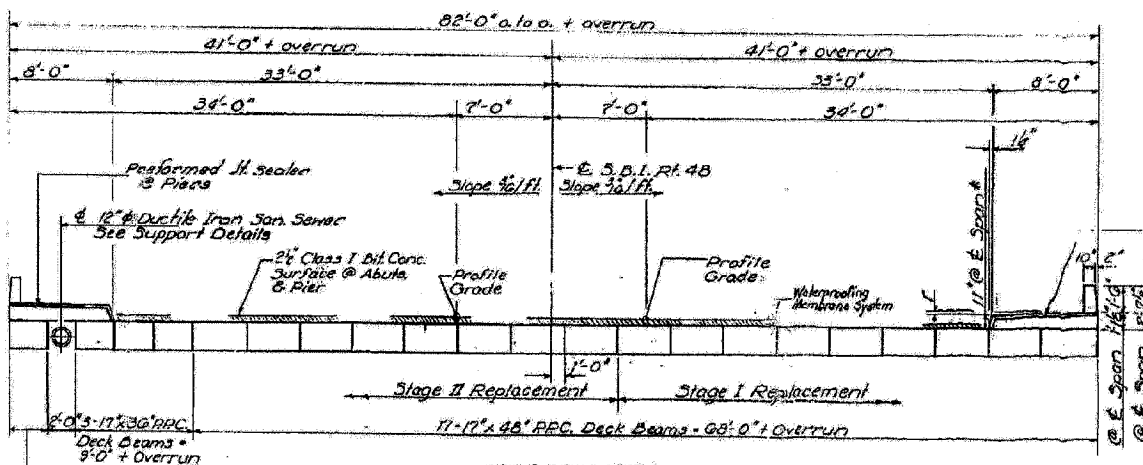
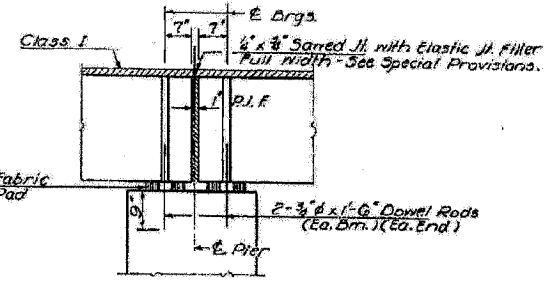
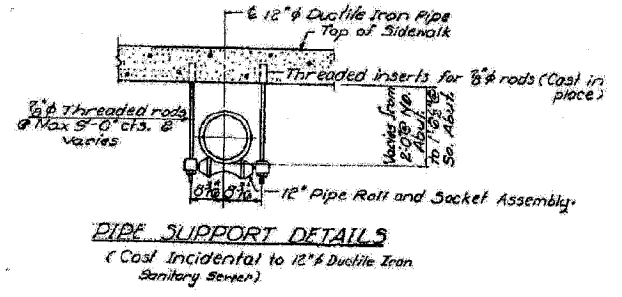
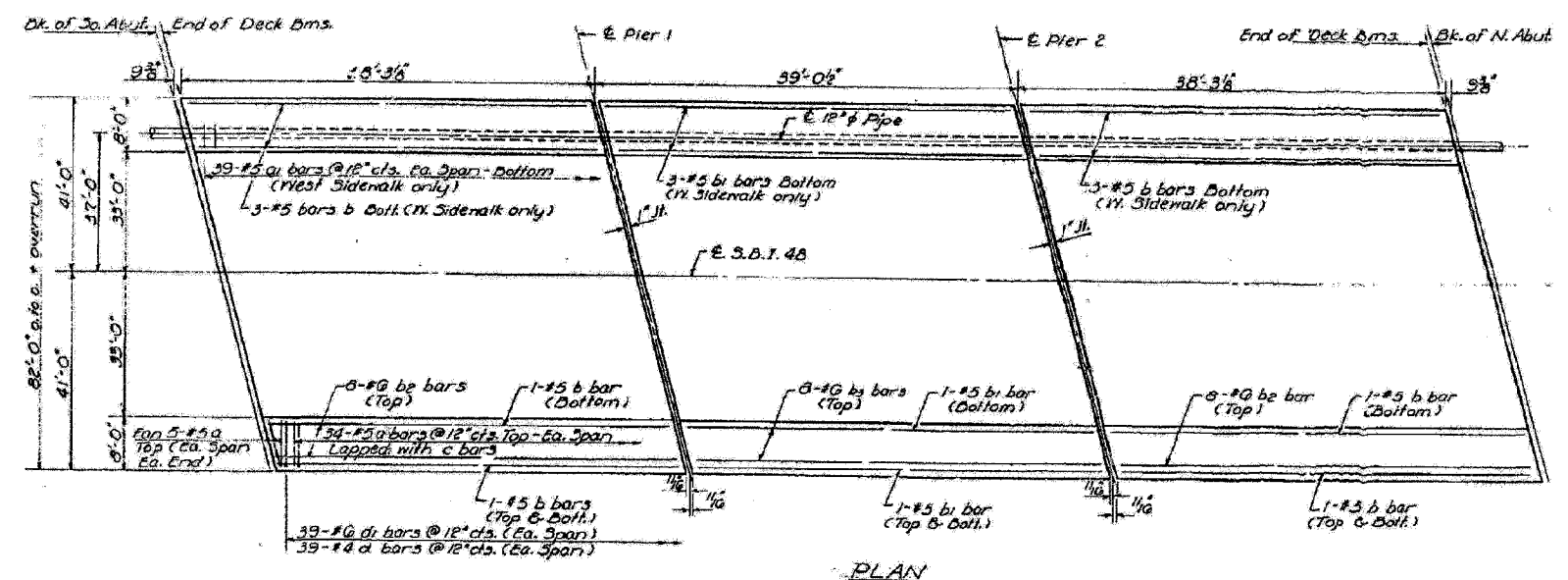




STATE OF ILLINOIS
DEPARTMENT OF TRANSPORTATION

ROUTE NO.	SECTION	COUNTY	TOTAL SHEETS	SHEET NO.
65	130BR-1JBR	MACON	22	11

FAP RTE	SECTION	COUNTY	TOTAL SHEETS	SHEET NO.
716	(130BR-1JBR)	MACON	22	13
STA.	TO STA.			
FED. ROAD DIST. NO.	ILLINOIS	FED. AID PROJECT AID		



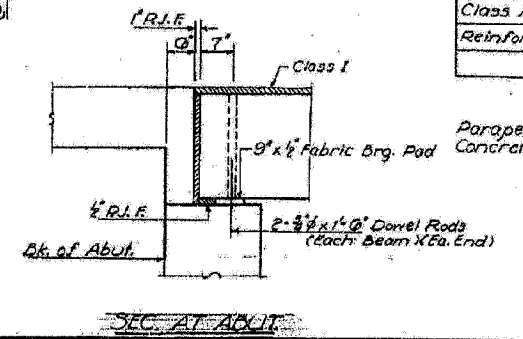
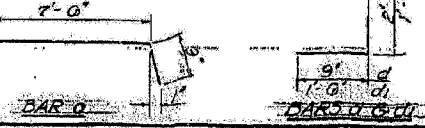
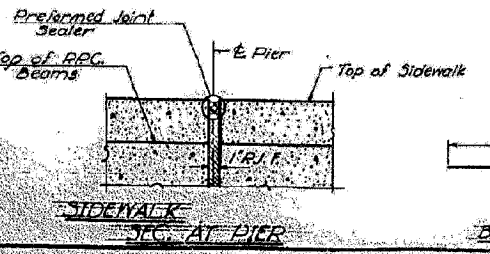
* Construct Top of Sidewalk parallel to grade.
For Cross Sections thru Sidewalk See Sheets d & 3.

BILL OF MATERIAL

Bar	No.	Size	Length	Shape	
a	204	#5	8'-3"	—	
a1	117	#5	7'-9"	—	
b	10	#5	38'-0"	—	
b1	9	#5	38'-9"	—	
b2	32	#6	38'-0"	—	
b3	16	#6	38'-9"	—	
d	234	#4	8'-9"	L	
d1	234	#6	5'-3"	L	
Class X Concrete				Cu. Yds.	62.0
Reinforcement Bars				Lbs.	8630

PREFORMED JOINT SEALER

DESIGNED: SUZETTE T. DEAN
CHECKED: JACOB JACOBS
DRAWN: JACOBS
CHECKED: JPC



Parapet Reinforcement and Class X Concrete are billed on Sheet No. 6

BRIDGE STRUCTURE
S.D.I. RT. 48 - SEC. 130BR
MACON COUNTY
STA. 1351+71.00

Revised 9-24-78

ESCA
CONSULTANTS, INC.

DESIGNED BY:	ELH	02/07
DRAWN BY:	JPC	02/07
CHECKED BY:	ELH	02/07
APPROVED BY:	RDP	02/07

EXISTING BRIDGE PLANS
FAP ROUTE 716 (IL 48)
OAKLAND AVENUE
SECTION (130BR-1JBR)
MACON COUNTY
SN 058-0056