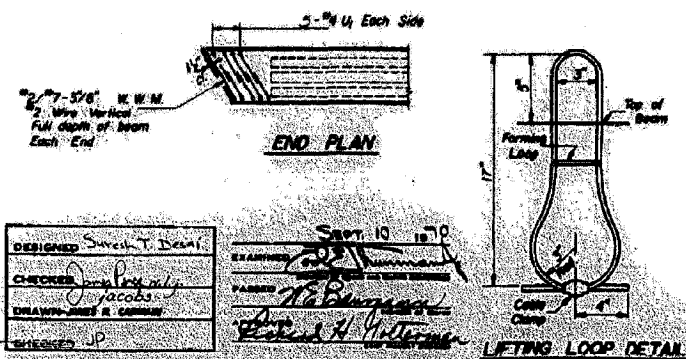
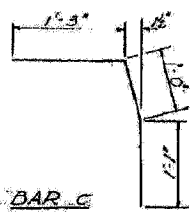
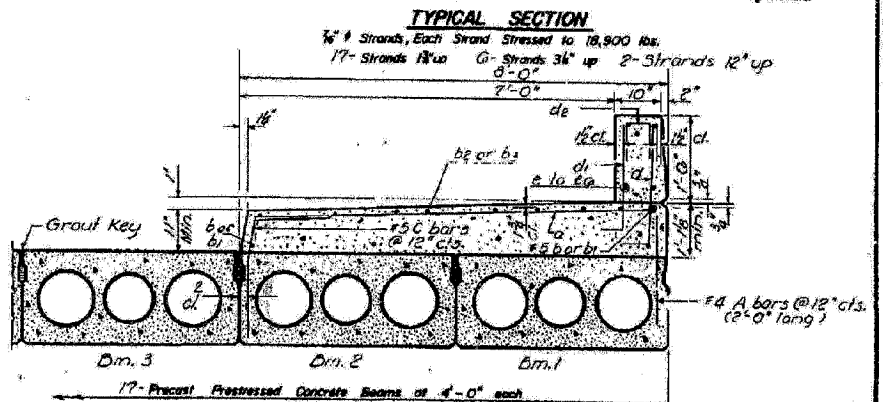
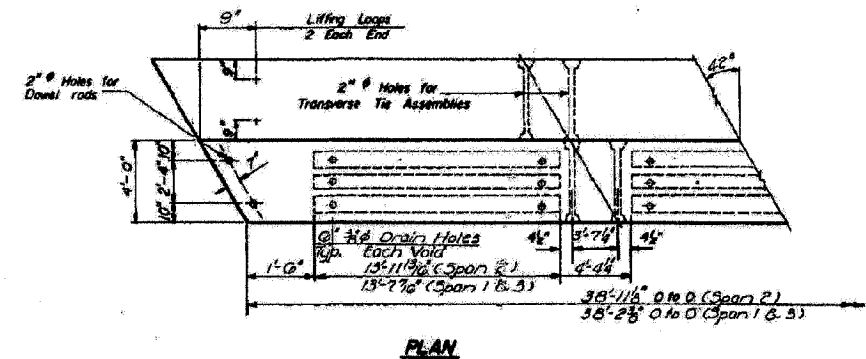
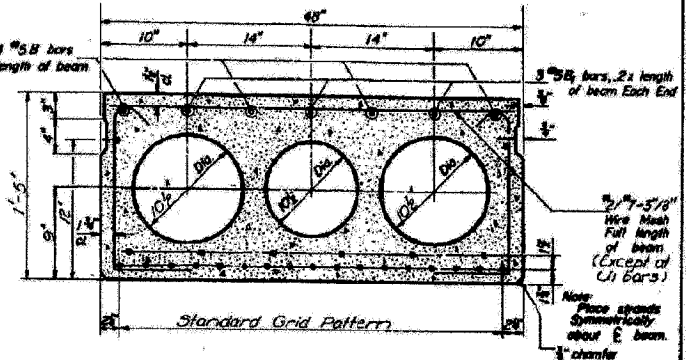
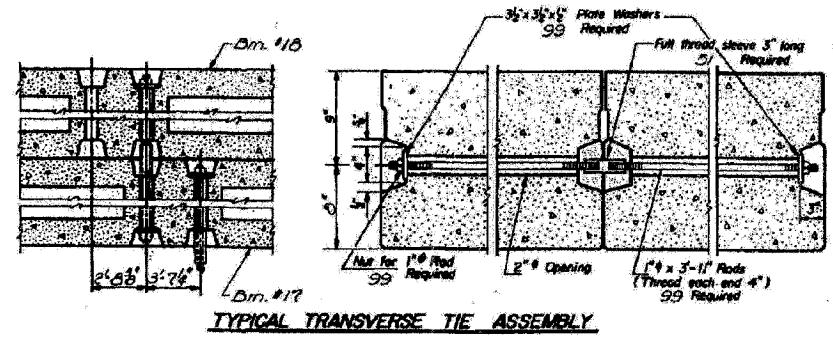
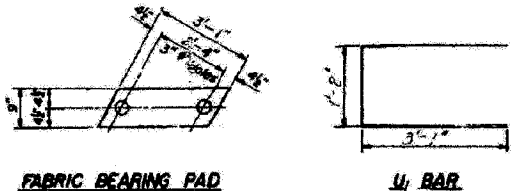


CONTRACT NO. 74239			
FAP RTE	SECTION	COUNTY	TOTAL SHEET NO.
716	(130BR-1)BR	MACON	22
STA.	TO STA.		16
FED. ROAD DIST. NO.	ILLINOIS	FED. AID PROJECT AID	

STATE OF ILLINOIS
DEPARTMENT OF TRANSPORTATION

PROJECT NO.	SECTION	SHEET NO.	TOTAL SHEETS
66 130BR	MACON	37	26
SHEET NO. 5			
11 SHEETS			



GENERAL NOTES

Prestressing steel shall be non-polymerized, high strength, stress-relieved 7-wire strand. The nominal diameter shall be 7/8" and the nominal cross-sectional area shall be 0.109 sq. in. Lifting loops shall be 5/8" diameter, 6 x 19 class wire rope with fiber core and shall have a minimum ultimate tensile strength of 29,000 lbs. The 1" rods in the transverse tie assembly shall be tightened to a snug fit and the threads set. Packers that receive transverse tie bars on outside beam shall be filled with grout after transverse tie assembly is in place. Longitudinal steel ties shall be packed with a very dry mix of 2-1 sand and P.C. mortar. After beams have been erected, holes for the dowel anchors shall be drilled into the sub-structure and the anchor dowels shall be grouted in place. After fabrication, the transverse tie assemblies (tie rods, nuts, washers and sleeves) shall be hot-dipped, galvanized in accordance with A.S.T.M. Designation A153. Cost of reinforcement and accessories cost into the beam, of bearing pads, of armor angles, and of grouting longitudinal steel ties is included in unit price bid for Precast Prestressed Concrete Deck Beams. Steel for dowel rods shall be ASTM A-309 or ASTM A-315. Steel for transverse tie rods shall be ASTM A-309, Grade 70-80.

BILL OF MATERIAL

Precast Prestressed Concrete Deck Beams	Sq. Ft.	7542

SUPERSTRUCTURE DETAILS
S.B.T. RT. 48 SEC. 130BR
MACON COUNTY
STA. 135 + 77.00

DESIGNED	SWEN T. DEAN	DATE	NOV 10 1970
CHECKED	JACOBS		
DRAWN	JACOBS		
ENGINEER	J.P.		

FD-3, R. 11-2-69, Rev. 5-20-66

ESCA
CONSULTANTS, INC.

DESIGNED BY:	ELH	02/07
DRAWN BY:	JPC	02/07
CHECKED BY:	ELH	02/07
APPROVED BY:	RDP	02/07

EXISTING BRIDGE PLANS
FAP ROUTE 716 (IL 48)
OAKLAND AVENUE
SECTION (130BR-1)BR
MACON COUNTY
SN 058-0056