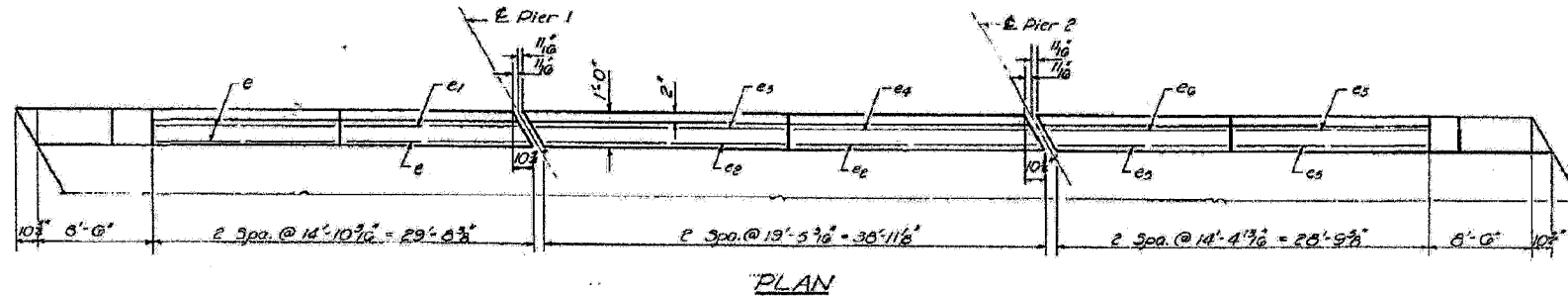
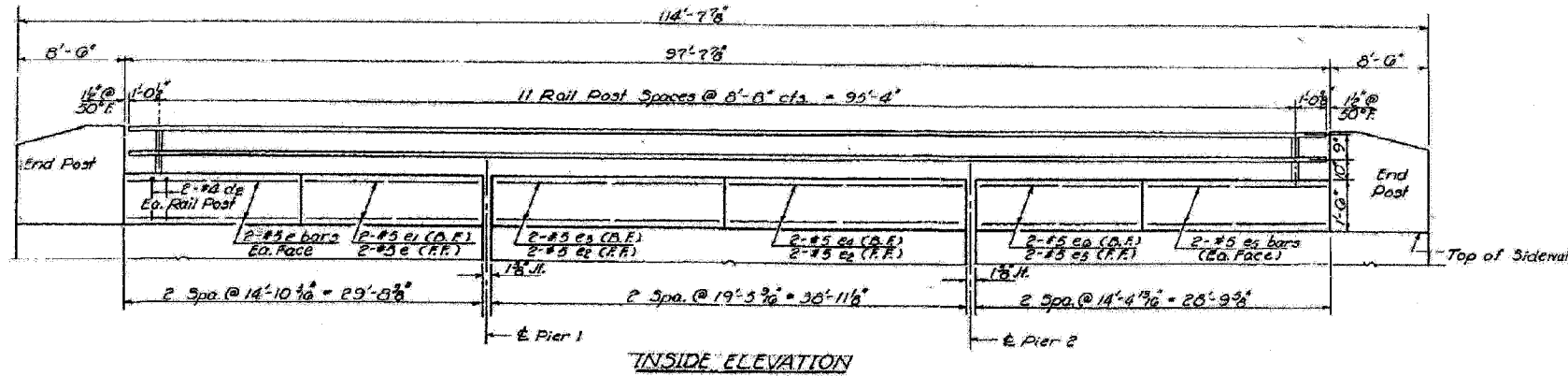




STATE OF ILLINOIS
DEPARTMENT OF TRANSPORTATION

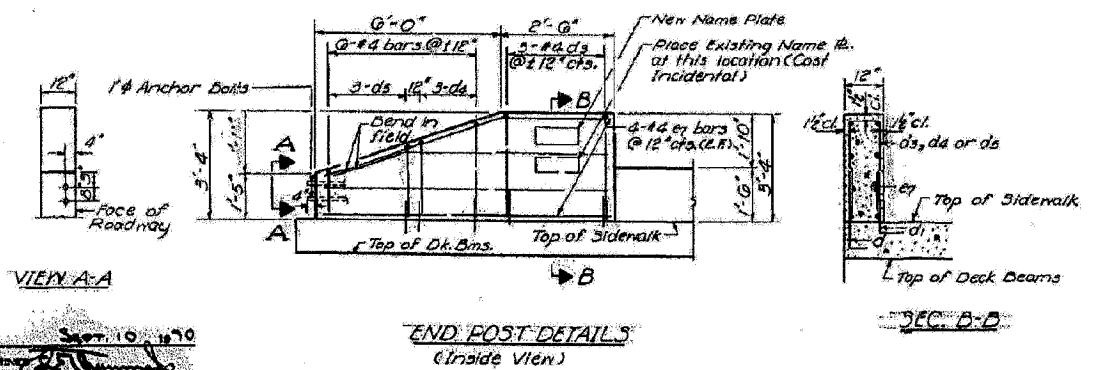
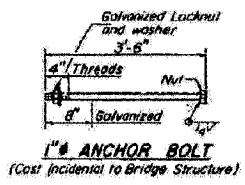
ROUTE NO.	SECTION	COUNTY	SHEET NO.	TOTAL SHEETS
65	130BR-1BR	MACON	37	22
STA.		TO STA.		
135+77.00		135+77.00		

CONTRACT NO. 74239				
FAP RTE	SECTION	COUNTY	TOTAL SHEETS	SHEET NO.
716	(130BR-1BR)	MACON	22	17
STA.		TO STA.		
135+77.00		135+77.00		
FED. ROAD DIST. NO. ILLINOIS FED. AID PROJECT AID				



BILL OF MATERIAL

Bar	No.	Size	Length	Shape
d2	48	#4	2'-1"	□
d3	12	#4	0'-9"	□
d4	12	#4	4'-9"	□
d5	12	#4	3'-9"	□
e	12	#5	14'-7"	—
e1	4	#5	13'-9"	—
e2	8	#5	19'-3"	—
e3	4	#5	20'-1"	—
e4	4	#5	15'-3"	—
e5	12	#5	14'-1"	—
e6	4	#5	15'-0"	—
e7	32	#4	8'-5"	—
Class X Concrete			Cu. Yds.	13.3
Reinforcement Bars			Lbs.	1100



A-B-D DIMENSIONS

Bar	A	B
d2	9"	7"
d3	5'-0"	9"
d4	2'-0"	9"
d5	1'-3"	9"

PARAPET DETAILS
S.B.T. RT. 48 SEC. 130BR
MACON COUNTY
STA. 135+77.00

Note: For Section Thru Parapet See Sheets Nos. 4 & 5

DESIGNED: *Sumner T. Dixon*
CHECKED: *Jacob*
DRAWN: *Jacob*
EXAMINED: *W. B. ...*
PASSED: *W. B. ...*
DATE: *10/10/70*

ESCA
CONSULTANTS, INC.
DESIGNED BY: ELH 02/07
DRAWN BY: JPC 02/07
CHECKED BY: ELH 02/07
APPROVED BY: RDP 02/07

EXISTING BRIDGE PLANS
FAP ROUTE 716 (IL 48)
OAKLAND AVENUE
SECTION (130BR-1BR)
MACON COUNTY
SN 058-0056