

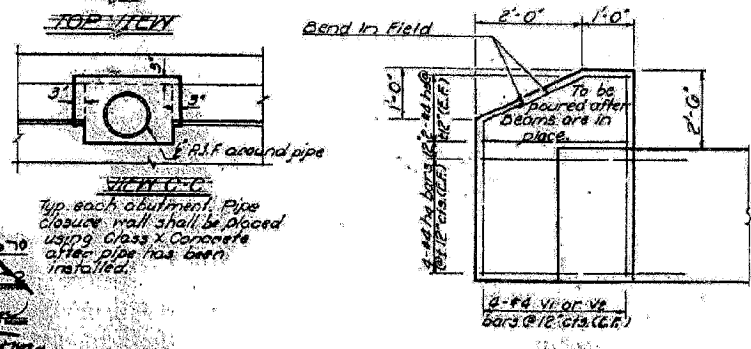
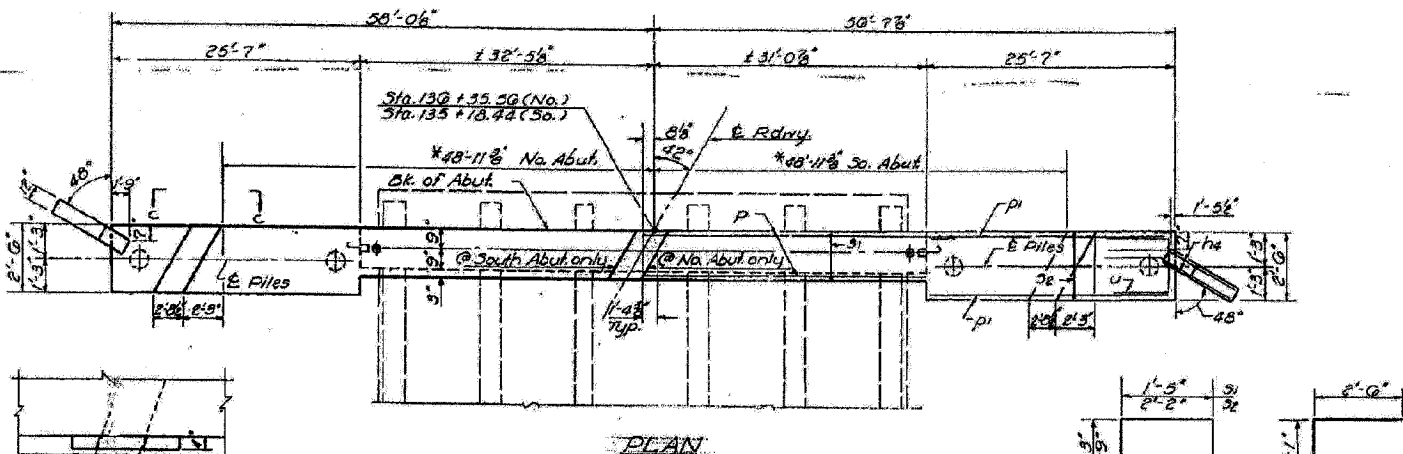
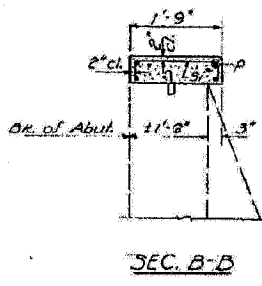
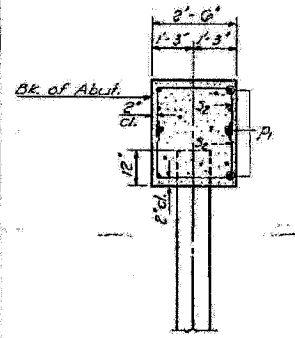
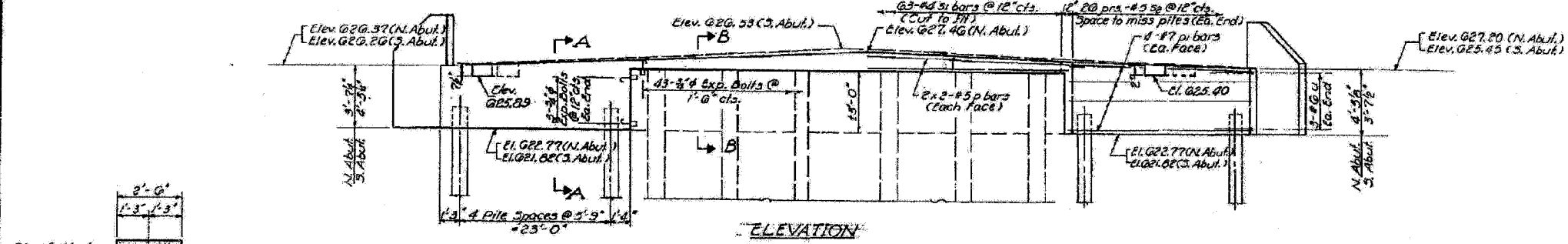


STATE OF ILLINOIS
DEPARTMENT OF TRANSPORTATION

PROJECT NO.	SECTION	COUNTY	SHEET NO.	TOTAL SHEETS
130BR	130BR-13R	MACON	30	18

FAP RTE	SECTION	COUNTY	TOTAL SHEETS	SHEET NO.
716	(130BR-13R)	MACON	22	18
STA.	TO STA.			
FED. ROAD DIST. NO.	ILLINOIS FED. AID PROJECT AID			

PILE DATA
Type Concrete
Capacity 25 Tons
Est'd Length 38 Ft.
No. Req'd 18 + 1 test pile



**2 ABUTMENTS
BILL OF MATERIAL**

Bar	No.	Size	Length	Shape
h4	32	#4	4'-0"	—
h5	10	#4	2'-9"	—
p	10	#5	33'-9"	—
pi	32	#7	25'-3"	—
s1	120	#4	3'-11"	□
s2	208	#5	7'-8"	□
u	12	#6	7'-1"	—
v1	10	#4	0'-8"	—
v2	10	#4	3'-10"	—
Class X Concrete		Cu. Yds.	51.8	
Reinforcement Bars		Lbs.	4550	
Expansion Bolts (#4)		Each	90	
Concrete Piles		Lin. Ft.	782	
Test Pile (Concrete)		Each	1	

DESIGNED: *Surell T. Deal*
CHECKED: *Jacob*
DRAWN: *Jacob*
CHECKED: *JF*

EXAMINED: *McB...*
APPROVED: *Richard H. Johnson*

*Dimensions include an allowance for the maximum overrun of the RRC beams. For a lesser overrun increase the neat sidewalk width so that the outside RRC beam is completely seated on the abutment.

Notes: All edges shall have 1/8" chamfer; cut reinforcement bars in the field to provide opening for 12" pipe.

ABUTMENTS
S.B.L. RT. 48 SEC. 130BR
MACON COUNTY
STA. 135+77.00

ESCA
CONSULTANTS, INC.

DESIGNED BY:	ELH	02/07
DRAWN BY:	JPC	02/07
CHECKED BY:	ELH	02/07
APPROVED BY:	RDJ	02/07

EXISTING BRIDGE PLANS
FAP ROUTE 716 (IL 48)
OAKLAND AVENUE
SECTION (130BR-13R)
MACON COUNTY
SN 058-0056