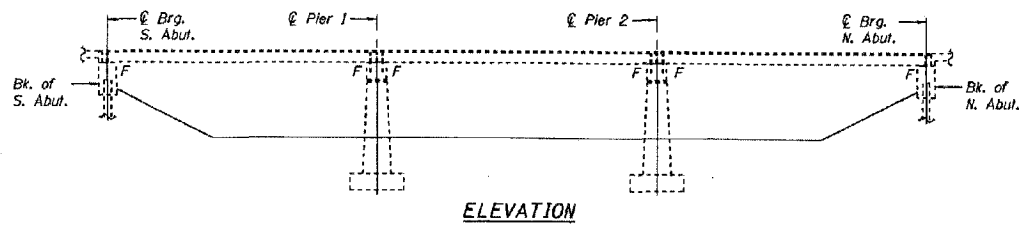




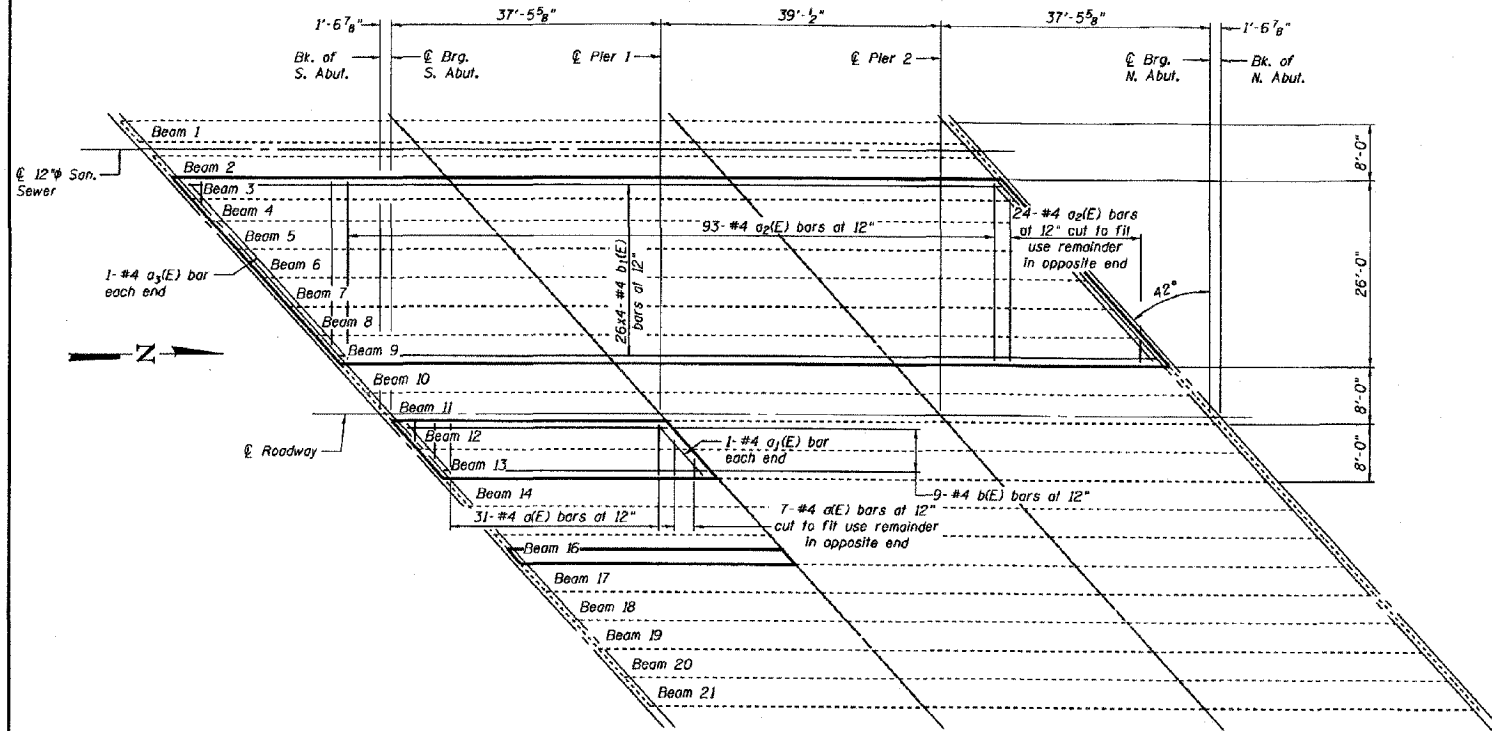
CONTRACT NO. 74239				
FAP RTE	SECTION	COUNTY	TOTAL SHEETS	SHEET NO.
716	(130BR-1)BR	MACON	22	20
STA.	TO STA.			
FED. ROAD DIST. NO.	ILLINOIS	FED. AID PROJECT AID		

STATE OF ILLINOIS  
DEPARTMENT OF TRANSPORTATION

ROUTE NO.	SECTION	COUNTY	DATE	SHEET NO.
		MACON		2 SHEETS
Contract Number: ---				



ELEVATION



PLAN

GENERAL NOTES

Plan dimensions and details relative to existing structure have been taken from existing plans and are subject to nominal construction variations. It shall be the Contractor's responsibility to verify such dimensions and details in the field and make necessary approved adjustments prior to construction or ordering of materials. Such variations shall not be cause for additional compensation for a change in the scope of the work, however, the Contractor will be paid for the quantity actually furnished at the unit price bid for the work.

If required to be anchored, temporary concrete barrier shall only be anchored into the overlay and not the PPC Deck Beams.

All construction joints shall be banded. Existing reinforcement extending into the removal area shall be cleaned, straightened and incorporated into the new construction. Any reinforcement bars that are damaged during concrete removal shall be replaced with an approved bar splitter or anchorage system. Cost shall be included with Concrete Removal.

Truck mixers, concrete pumps, vacuum trucks or other heavy equipment will not be allowed on any portion of the bridge. Scarification equipment, combined with other equipment shall not exceed 15 tons in one span.

TOTAL BILL OF MATERIAL

ITEM	UNIT	QUANTITY
Concrete Removal (Special)	Cu. Yd.	65.1
Concrete Superstructures	Cu. Yd.	89.5
Reinforcing Bars, Epoxy Coated	Pound	4,620
Bituminous Concrete Surface Removal	Sq. Yd.	367.9

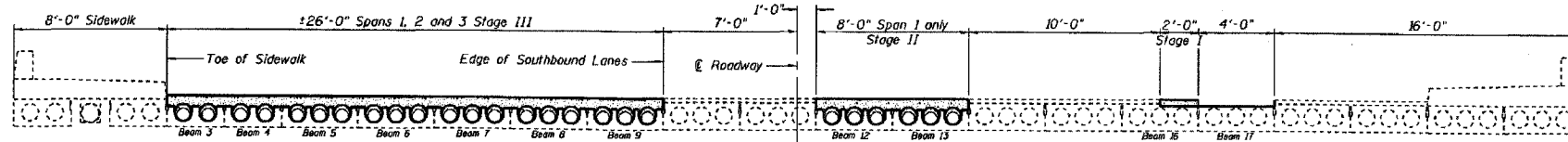
Bar List

Bar	No.	Size	Length	Shape
a(E)	38	#4	7'-9"	---
a(E)	2	#4	10'-6"	---
a(E)	117	#4	25'-9"	---
a(E)	2	#4	34'-6"	---
b(E)	9	#4	38'-0"	---
b(E)	104	#4	30'-7"	---

Reinforcement bars designated (E) shall be epoxy coated.  
Bars indicated thus 1 x 2-#5 etc. indicates 1 line of bars with 2 lengths per line.

Min. Bar Lqd

#4 Bar = 1'-8"



TYPICAL CROSS SECTION

Expires: November 30, 2006

DESIGNED	D.C.P.
CHECKED	M.A.C.
DRAWN	Drew Christopher
CHECKED	D.C.P. M.A.C.

EXAMINED	John A. Morris
PASSED	Ralph E. Anderson

**PRE-FINAL**

DATE: 07/27/2006

PLAN AND ELEVATION  
RT. 48 / SPRING CREEK  
MACON COUNTY  
SN 058-0056

**ESCA**  
CONSULTANTS, INC.

DESIGNED BY:	ELH	02/07
DRAWN BY:	JPC	02/07
CHECKED BY:	ELH	02/07
APPROVED BY:	RDP	02/07

EXISTING BRIDGE PLANS  
FAP ROUTE 716 (IL 48)  
OAKLAND AVENUE  
SECTION (130BR-1)BR  
MACON COUNTY  
SN 058-0056