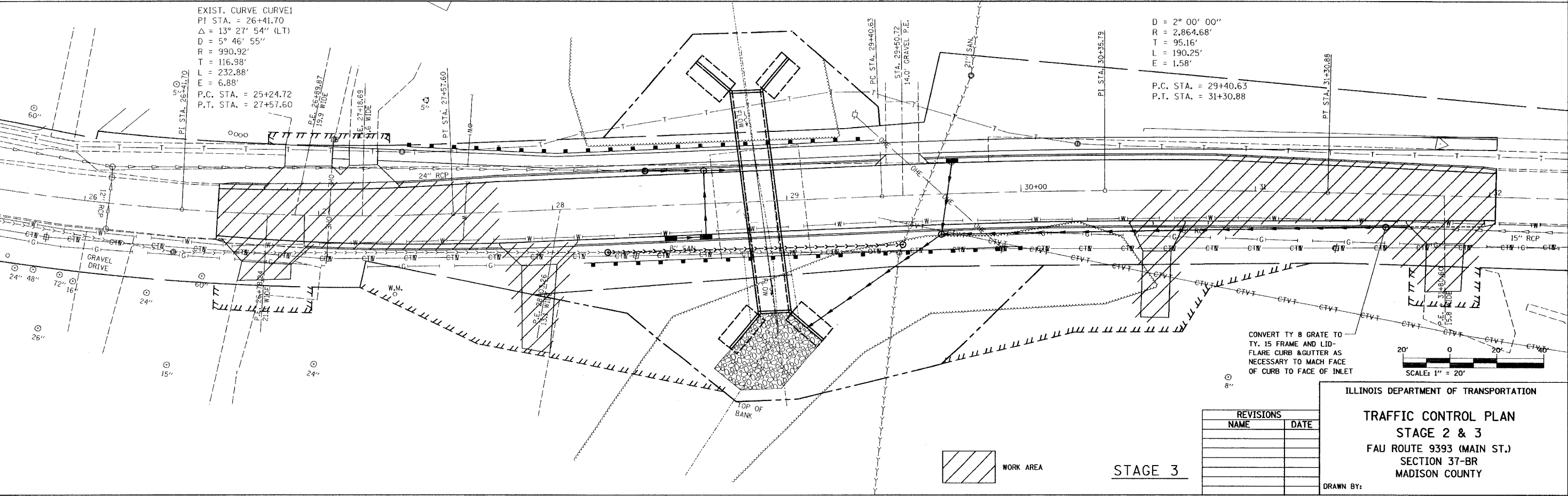
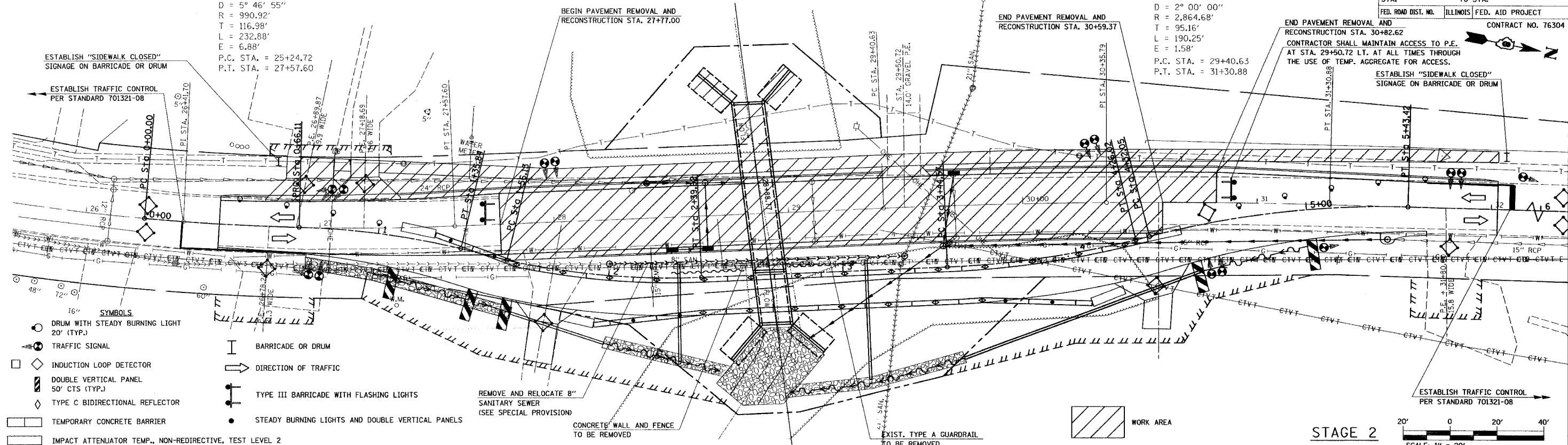


F.A.I.L. RTE.	SECTION	COUNTY	TOTAL SHEETS	SHEET NO.
9393	37-BR	MADISON	38	11
STA. 29+00.00		TO STA. 31+30.88		
FED. ROAD DIST. NO.		ILLINOIS		FED. AID PROJECT
				CONTRACT NO. 76304

EXIST. CURVE CURVE1
 PI STA. = 26+41.70
 $\Delta = 13^\circ 27' 54''$ (LT)
 $D = 5^\circ 46' 55''$
 $R = 990.92'$
 $T = 116.98'$
 $L = 232.88'$
 $E = 6.88'$
 P.C. STA. = 25+24.72
 P.T. STA. = 27+57.60

EXIST. CURVE CURVE2
 PI STA. = 30+35.79
 $\Delta = 3^\circ 48' 19''$ (RT)
 $D = 2^\circ 00' 00''$
 $R = 2,864.68'$
 $T = 95.16'$
 $L = 190.25'$
 $E = 1.58'$
 P.C. STA. = 29+40.63
 P.T. STA. = 31+30.88

END PAVEMENT REMOVAL AND RECONSTRUCTION STA. 30+82.62
 CONTRACTOR SHALL MAINTAIN ACCESS TO P.E. AT STA. 29+50.72 LT. AT ALL TIMES THROUGH THE USE OF TEMP. AGGREGATE FOR ACCESS.
 ESTABLISH "SIDEWALK CLOSED" SIGNAGE ON BARRICADE OR DRUM



REVISIONS	
NAME	DATE

ILLINOIS DEPARTMENT OF TRANSPORTATION

TRAFFIC CONTROL PLAN
 STAGE 2 & 3
 FAU ROUTE 9393 (MAIN ST.)
 SECTION 37-BR
 MADISON COUNTY

DRAWN BY:

PLT DATE = 12/16/2008
 FILE NAME = P:\PROJECTS\9393\9393-37-BR\TRAFFIC CONTROL PLAN.dwg
 USER NAME = jshannon