

Bench Mark: Chiseled square on Southwest retaining wall. Elevation 537.96

The existing structure was built prior to 1940 as a concrete arch culvert. 26'-0" face to face of curb with culvert length of 44'-0".

Traffic to be maintained utilizing stage construction.

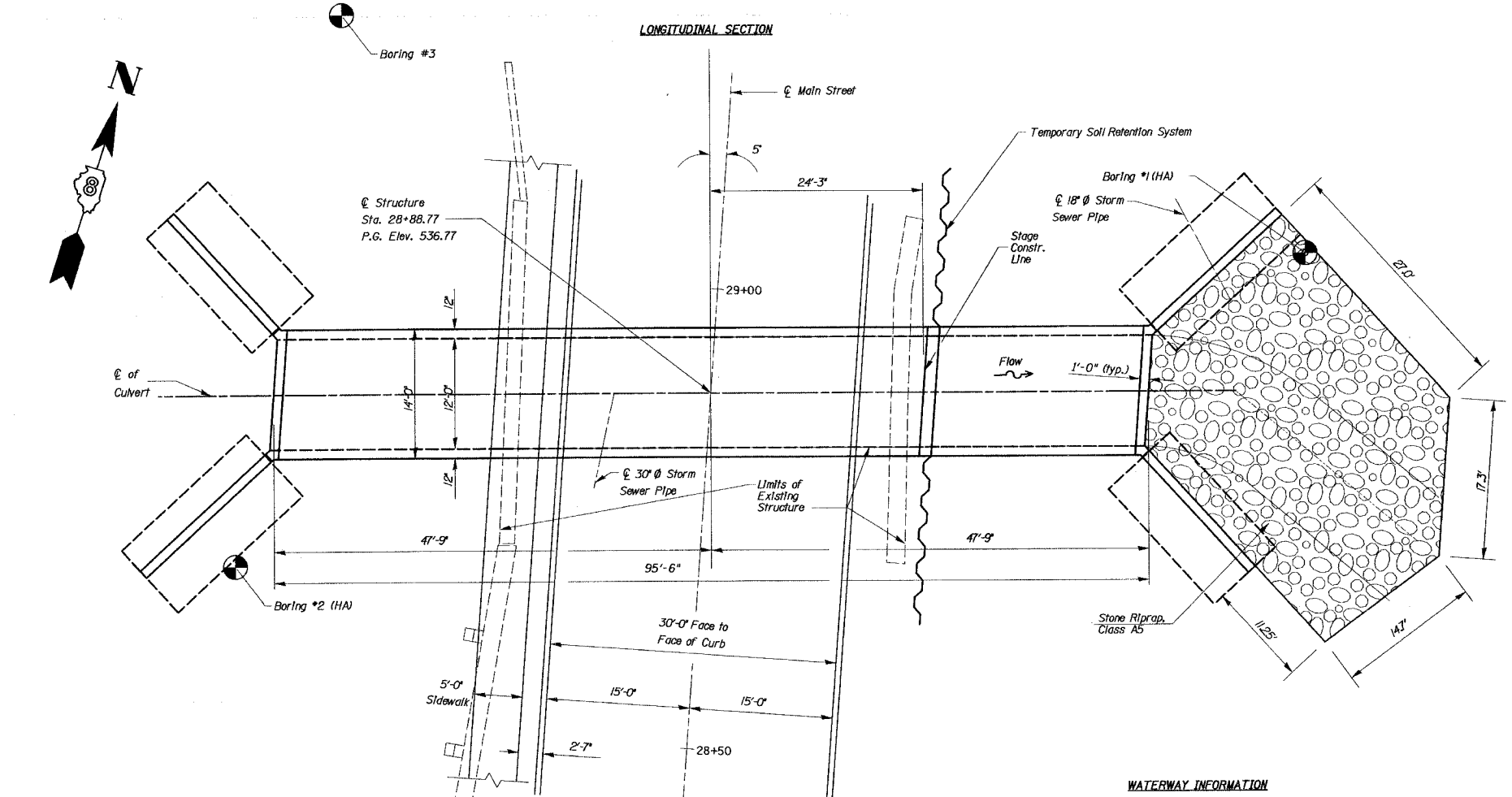
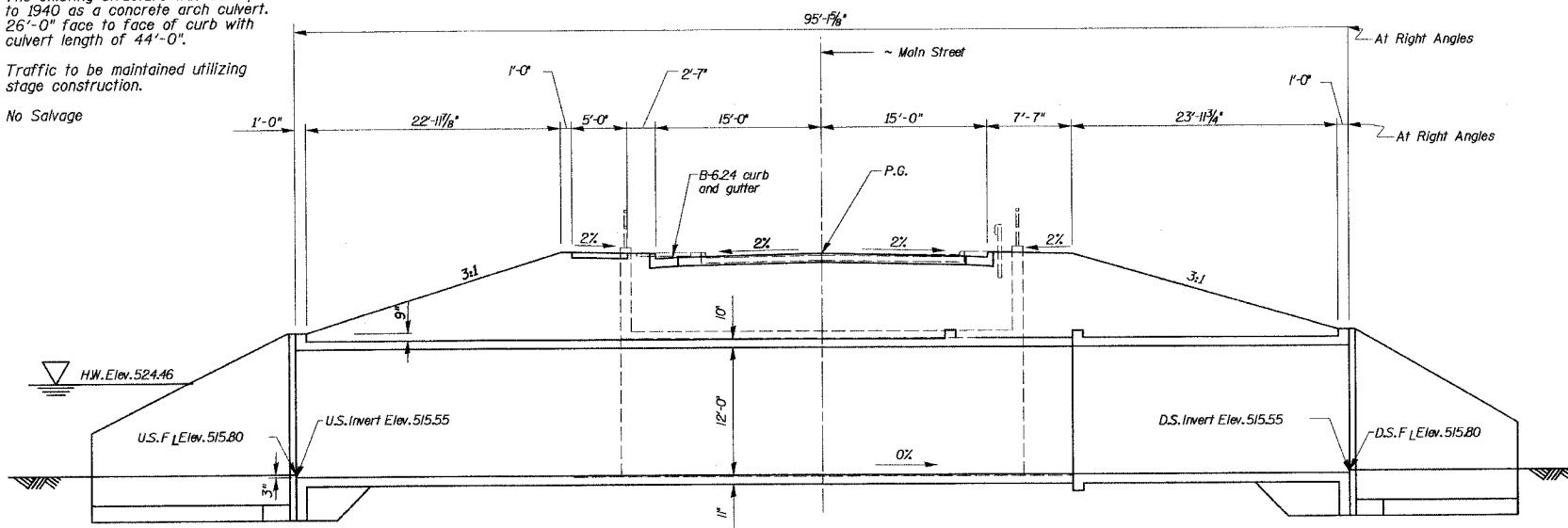
No Salvage

ROUTE NO.	SECTION	COUNTY	TOTAL SHEETS	SHEET NO.
F.A.U. 9393	37-BR	MADISON	38	19
FED. ROAD DIST. NO. 7	ILLINOIS	FED. AID PROJECT	CONTRACT NO. 76304	

SHEET NO. 1
5 SHEETS

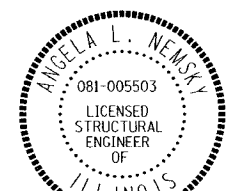
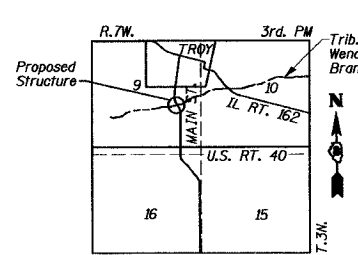
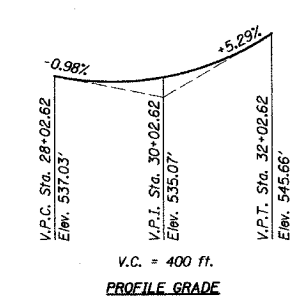
GENERAL NOTES

Layout of slope protection system may be varied in the field to suit ground conditions as directed by the Engineer.



TOTAL BILL OF MATERIAL

ITEM	UNIT	SUPER	SUB	TOTAL
Removal of Existing Structures	Each		1	1
Concrete Box Culverts	Cu. Yd.	254.1		254.1
Reinforcement Bars	Pound	46140		46140
Reinforcement Bars, Epoxy Coated	Pound	3380		3380
Bar Splicers	Each	88		88
Stone Riprap, Class A5	Sq. Yd.	106		106
Filter Fabric	Sq. Yd.	106		106
Temporary Soil Retention System	Sq. Ft.	599		599



Angela L. Nemsky
12/18/2006
expires 11/30/2008

WATERWAY INFORMATION

Drainage Area = 1.35 Sq. Mi. Low Grade Elev = 536.53 Ft. @ 29+44.47 Max. Rec. H.W.E. = unknown Ft.

	Freq. Yr.	Q C.F.S.	Opening - Sq. Ft.	Nat. H.W.E.	Exist. H.W.E.	Prop. H.W.E.	Headwater El. - Ft.	Prop. Headwater El. - Ft.
Flood Design	50	1024	101.88	103.92	524.46	2.35	2.12	526.81
Base	100	1189	106.20	108.24	524.82	2.91	2.68	527.73
Overtopping								
Max. Calc.	500	1589	114.96	117.00	555.55	4.38	4.14	529.93

LOADING HS20-44
Allow 50#/sq. ft. for future wearing surface.
DESIGN SPECIFICATIONS
2002 AASHTO
DESIGN STRESSES
FIELD UNITS
f'c = 3,500 psi
fy = 60,000 psi (reinforcement)

REVISIONS	
NAME	DATE

ILLINOIS DEPARTMENT OF TRANSPORTATION
GENERAL PLAN
MAIN ST. OVER UNNAMED
TRIBUTARY TO WENDELL BRANCH
F.A.U. ROUTE 9393 - SEC. 37BR
MADISON COUNTY
STATION 28+88.77
STRUCTURE NO. 060-2407

DESIGNED	ALN
CHECKED	
DRAWN	J1
CHECKED	ALN