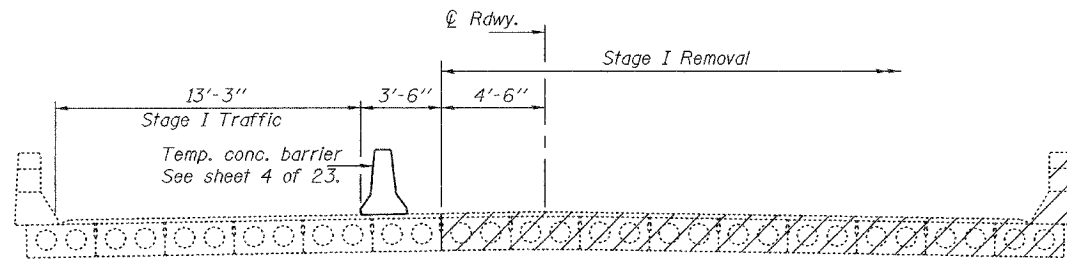


STATE OF ILLINOIS
DEPARTMENT OF TRANSPORTATION

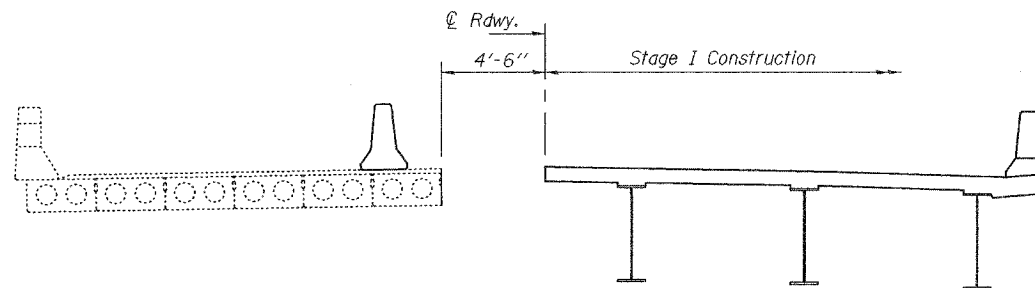
ROUTE NO.	SECTION	COUNTY	SHEET NO.	SHEET NO. 2
FAP 785	134-1BR-2	MADISON	23	56
FED. ROAD DIST. NO. 7		ILLINOIS		

23 SHEETS

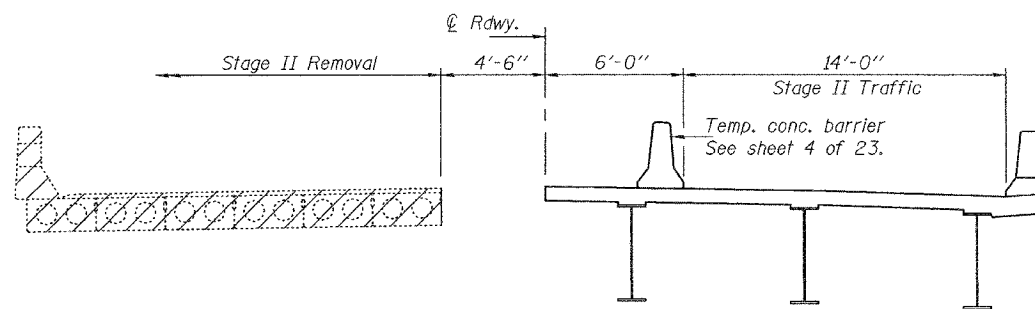
Contract #76902



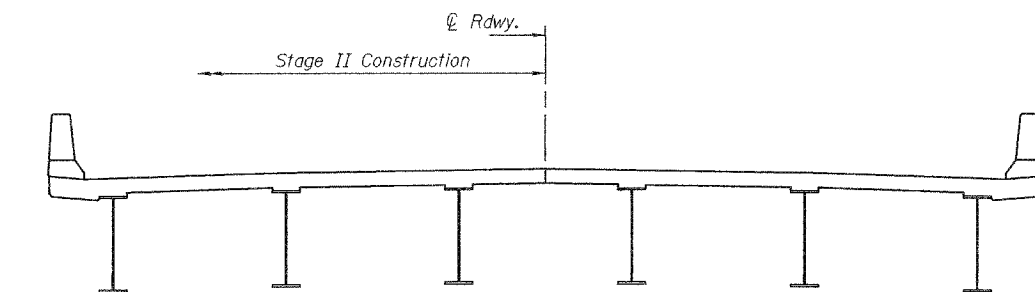
STAGE I REMOVAL



STAGE I CONSTRUCTION



STAGE II REMOVAL



STAGE II CONSTRUCTION

Notes: Hatched area indicates removal of existing structures.
All staging sections are looking east.
For quantity of temporary concrete barriers, see roadway plans.

DESIGNED	R.L. Tharp
CHECKED	N.R. Barnett
DRAWN	h.f. duong
CHECKED	RLT/NRB

April 9, 2007
EXAMINED *Thomas J. Donagallo*
CHIEF ENGINEER OF BRIDGE DESIGN
PASSED *Ralph E. Anderson*
ENGINEER OF BRIDGES AND STRUCTURES

GENERAL NOTES

Fasteners shall be AASHTO M164 Type 1, mechanically galvanized bolts.
Bolts 3/8" φ, holes 1/2" φ, unless otherwise noted.
Calculated weight of Structural Steel = 326520 lb (AASHTO M 270, Gr. 50)
36050 lb (AASHTO M 270, Gr. 36)

No field welding is permitted except as specified in the contract documents.
Reinforcement bars shall conform to the requirements of ASTM A 706 Gr 60 (IL Modified). See Special Provisions.

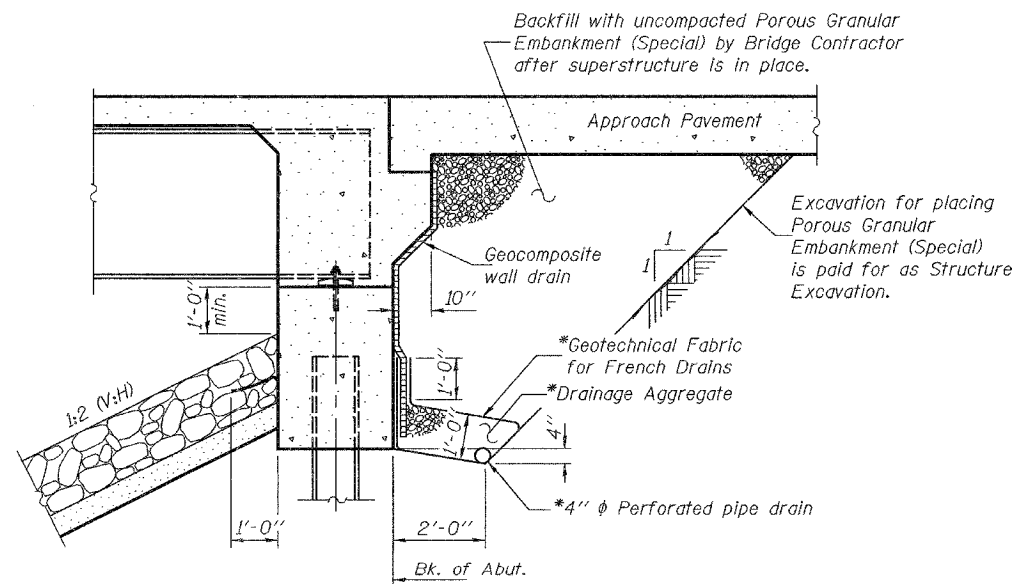
Reinforcement bars designated (E) shall be epoxy coated.
Bearing seat surfaces shall be constructed or adjusted to their designated elevations within a tolerance of 1/8 inch (0.01 ft.). Adjustment shall be made either by grinding the surface or by shimming the bearings.
The Inorganic Zinc Rich Primer / Acrylic / Acrylic Paint System shall be used for shop and field painting of new structural steel except where otherwise noted. The color of the final finish coat for all interior steel surfaces shall be gray, Munsell No. 5B 7/1. The color of the final finish coat for the exterior and bottom flange of the fascia beams shall be gray, Munsell No. 5B 7/1. See Special Provision for "Cleaning and Painting New Metal Structures".

Layout of slope protection system may be varied in the field to suit ground conditions as directed by the Engineer.
The Contractor shall drive test piles to 110% of the nominal required bearing specified in production locations at substructures specified or approved by the Engineer before ordering the remainder of piles.

Excavation behind existing abutment walls shall be performed to balance front and back soil pressure before removing the existing superstructure. The Contractor shall sawcut the upper portion of the existing abutment at the stage removal lines before Stage I removal to ensure the remaining portion will not be prematurely damaged.

TOTAL BILL OF MATERIAL

ITEM	UNIT	SUPER	SUB	TOTAL
Porous Granular Embankment (Special)	Cu. Yd.		203	203
Stone Riprap, Class A5	Sq. Yd.		3426	3426
Filter Fabric	Sq. Yd.		3426	3426
Removal of Existing Structures	Each		1	1
Structure Excavation	Cu. Yd.		208	208
Cofferdam Excavation	Cu. Yd.		796	796
Cofferdam (Location 1)	Each		1	1
Cofferdam (Location 2)	Each		1	1
Floor Drains	Each	24		24
Concrete Structures	Cu. Yd.		336.8	336.8
Concrete Superstructure	Cu. Yd.	423.0		423.0
Bridge Deck Grooving	Sq. Yd.	1224		1224
Concrete Encasement	Cu. Yd.		5.4	5.4
Protective Coat	Sq. Yd.	1532		1532
Furnishing and Erecting Structural Steel	L. Sum	1		1
Stud Shear Connectors	Each	4176		4176
Reinforcement Bars, Epoxy Coated	Pound	108960	42060	151020
Bar Splicers	Each	1117	182	1299
Driving Piles	Foot		4147	4147
Furnishing Steel Piles HP12x63	Foot		4147	4147
Test Pile Steel HP12x63	Each		4	4
Pile Shoes	Each		72	72
Temporary Soil Retention System	Sq. Ft.	1029		1029
Name Plates	Each	1		1
Geocomposite Wall Drain	Sq. Yd.		99	99
Pipe Underdrains for Structures, 4"	Foot		170	170
Anchor Bolts, 1" φ	Each	24		24
Anchor Bolts, 1/4" φ	Each	24		24
Temporary Shoring	Each		2	2
Asbestos Bearing Pad Removal	Each	180		180



SECTION THRU INTEGRAL ABUTMENT

*Included in the cost of Pipe Underdrains for Structures, 4".

Note: All drainage system components shall extend to 2'-0" from the end of each wingwall except an outlet pipe shall extend until intersecting with the side slopes. The pipes shall drain into concrete headwalls. (See Article 601.05 of the Standard Specifications and Highway Standard 601101).

GENERAL DATA &
STAGE CONSTRUCTION DETAILS
F.A.P. RTE. 785 - SEC. 134-1BR-2
MADISON COUNTY
STATION 623+90.00
STRUCTURE NO. 060-0240