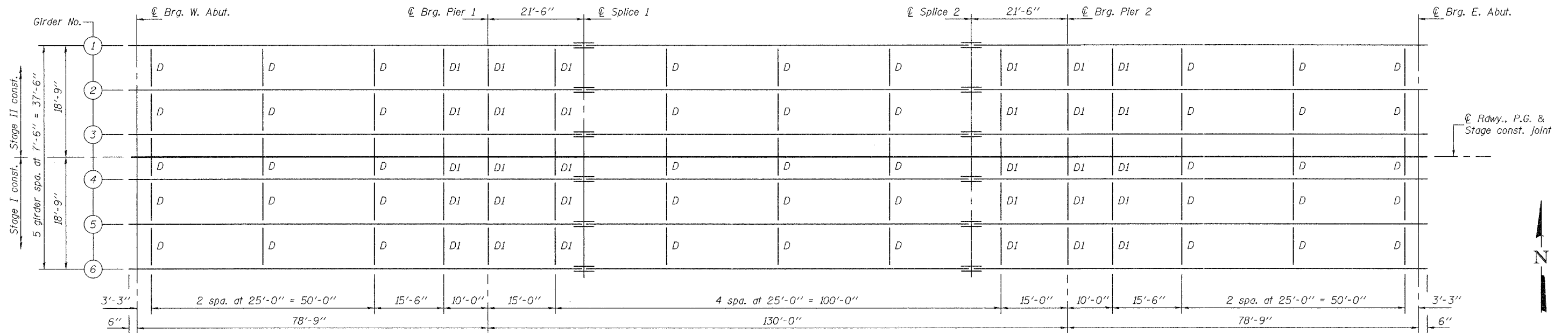


STATE OF ILLINOIS
DEPARTMENT OF TRANSPORTATION

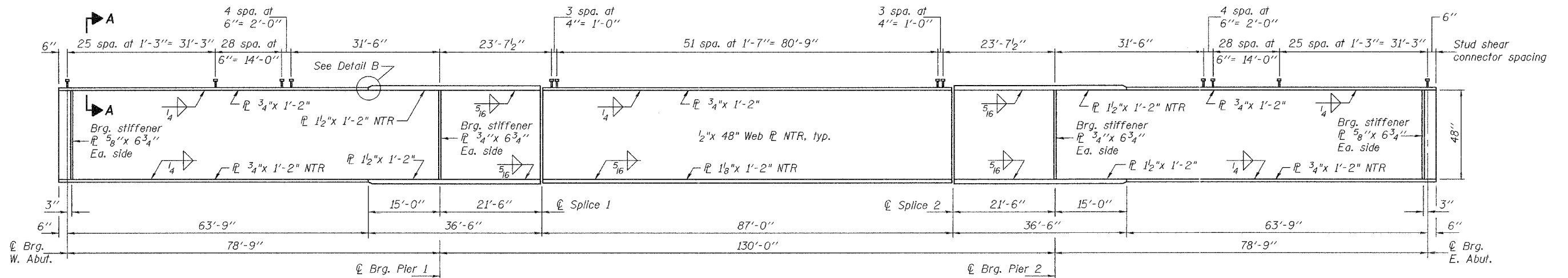
ROUTE NO.	SECTION	COUNTY	TOTAL SHEETS	SHEET NO.
FAP 785	134-1BR-2	MADISON	32	50
FED. ROAD DIST. NO. 7	ILLINOIS	FED. AID PROJECT-		

Contract #76902

SHEET NO. 11
23 SHEETS



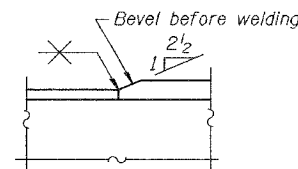
PLAN



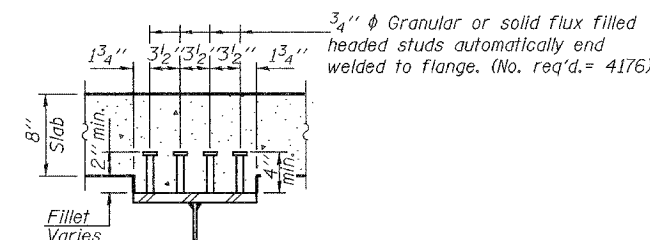
GIRDER ELEVATION

All plates and bearing stiffeners shall be AASHTO M 270 Grade 50.

Note: Load carrying components designated "NTR" shall conform to the Supplemental Requirements for Notch Toughness, Zone 2.



DETAIL B



SECTION A-A

DESIGNED	R.L. Thorp
CHECKED	N.R. Barnett
DRAWN	h.t. duong
CHECKED	RLT/NRB

April 9, 2007
EXAMINED *Thomas J. Donagale*
PASSED *Ralph E. Anderson*
ENGINEER OF BRIDGES AND STRUCTURES

STRUCTURAL STEEL
F.A.P. RTE. 785 - SEC. 134-1BR-2
MADISON COUNTY
STATION 623+90.00
STRUCTURE NO. 060-0240