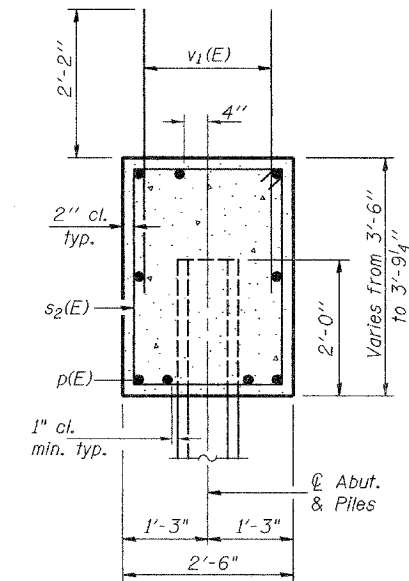
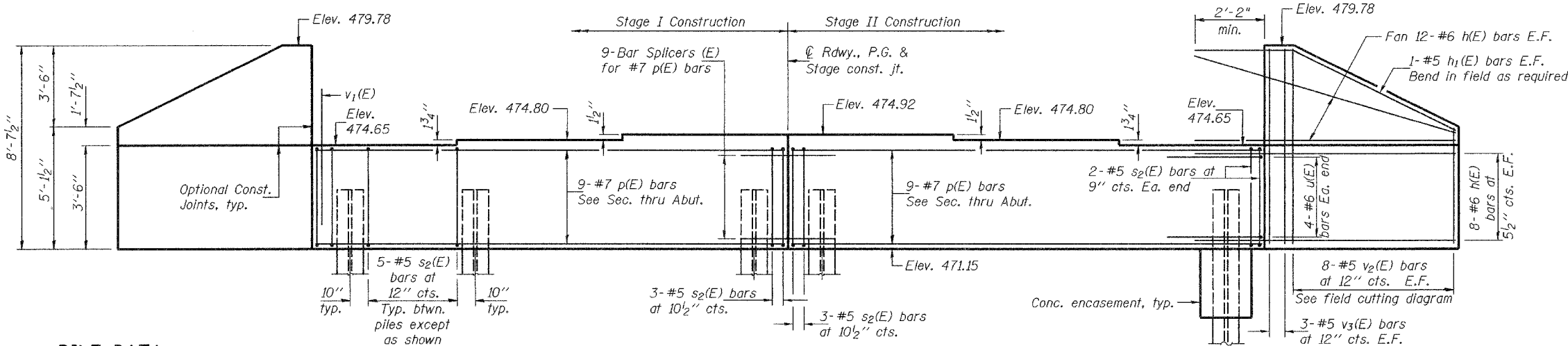


Notes: Pour steps monolithically with cap.
 For bar splicer assembly details, see sheet 18 of 23.
 For details of piles, see sheet 19 of 23.
 If h(E) bars interfere with HP plies, cut h(E) to fit.

STATE OF ILLINOIS
 DEPARTMENT OF TRANSPORTATION

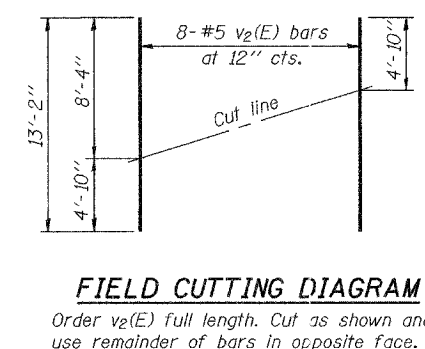
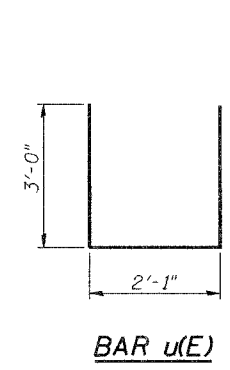
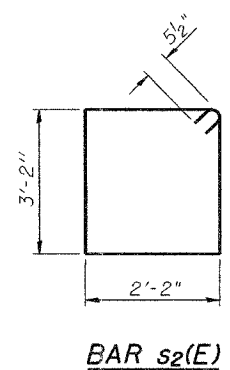
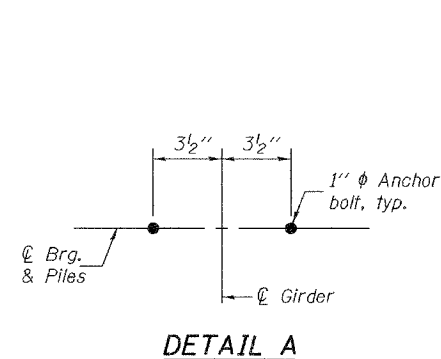
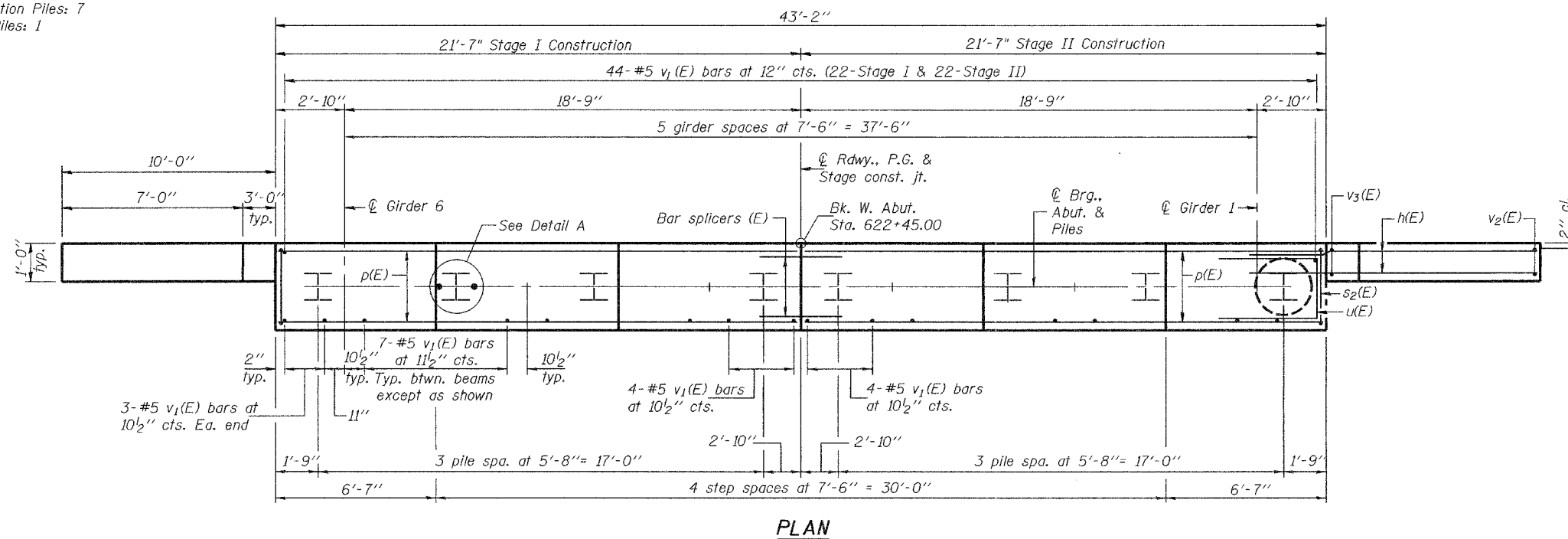
ROUTE NO.	SECTION	COUNTY	STATION	SHEET NO.	SHEET NO. 14 23 SHEETS
FAP 785	134-1BR-2	MADISON	35	56	
FED. ROAD DIST. NO. 7		ILLINOIS		FED. AID PROJECT	

Contract #76902



PILE DATA

Type: Steel HP12x63 with pile shoes
 Nominal Required Bearing: 280 Kips
 Factored Resistance Available: 140 Kips
 Estimated Pile Length: 55'
 No. Production Piles: 7
 No. Test Piles: 1



BILL OF MATERIAL

Bar	No.	Size	Length	Shape
h(E)	80	#6	12'-0"	—
h ₁ (E)	4	#5	13'-0"	—
p(E)	18	#7	21'-3"	—
s ₂ (E)	40	#5	11'-7"	□
u(E)	8	#6	8'-1"	—
v ₁ (E)	86	#5	4'-4"	—
v ₂ (E)	16	#5	13'-2"	—
v ₃ (E)	12	#5	8'-4"	—
Concrete Structures		Cu. Yd.	20.0	
Reinforcement Bars, Epoxy Coated		Pound	3570	
Structure Excavation		Cu. Yd.	104	
Furnishing Steel Piles HP12x63		Foot	385	
Driving Piles		Foot	385	
Test Pile Steel HP12x63		Each	1	
Pile Shoes		Each	8	
Concrete Encasement		Cu. Yd.	2.7	

DESIGNED	R.L. Tharp
CHECKED	N.R. Barnett
DRAWN	h.t. duong
CHECKED	RLT/NRB

April 9, 2007
 EXAMINED *Thomas J. Damagala*
 ENGINEER OF BRIDGE DESIGN
 PASSED *Ralph E. Anderson*
 ENGINEER OF BRIDGES AND STRUCTURES

WEST ABUTMENT
 F.A.P. RTE. 785 - SEC. 134-1BR-2
 MADISON COUNTY
 STATION 623+90.00
 STRUCTURE NO. 060-0240